

# Mission

To create a state-of-the-art building that makes Cleveland as renowned internationally for medical education as it is for clinical care.

# Goals

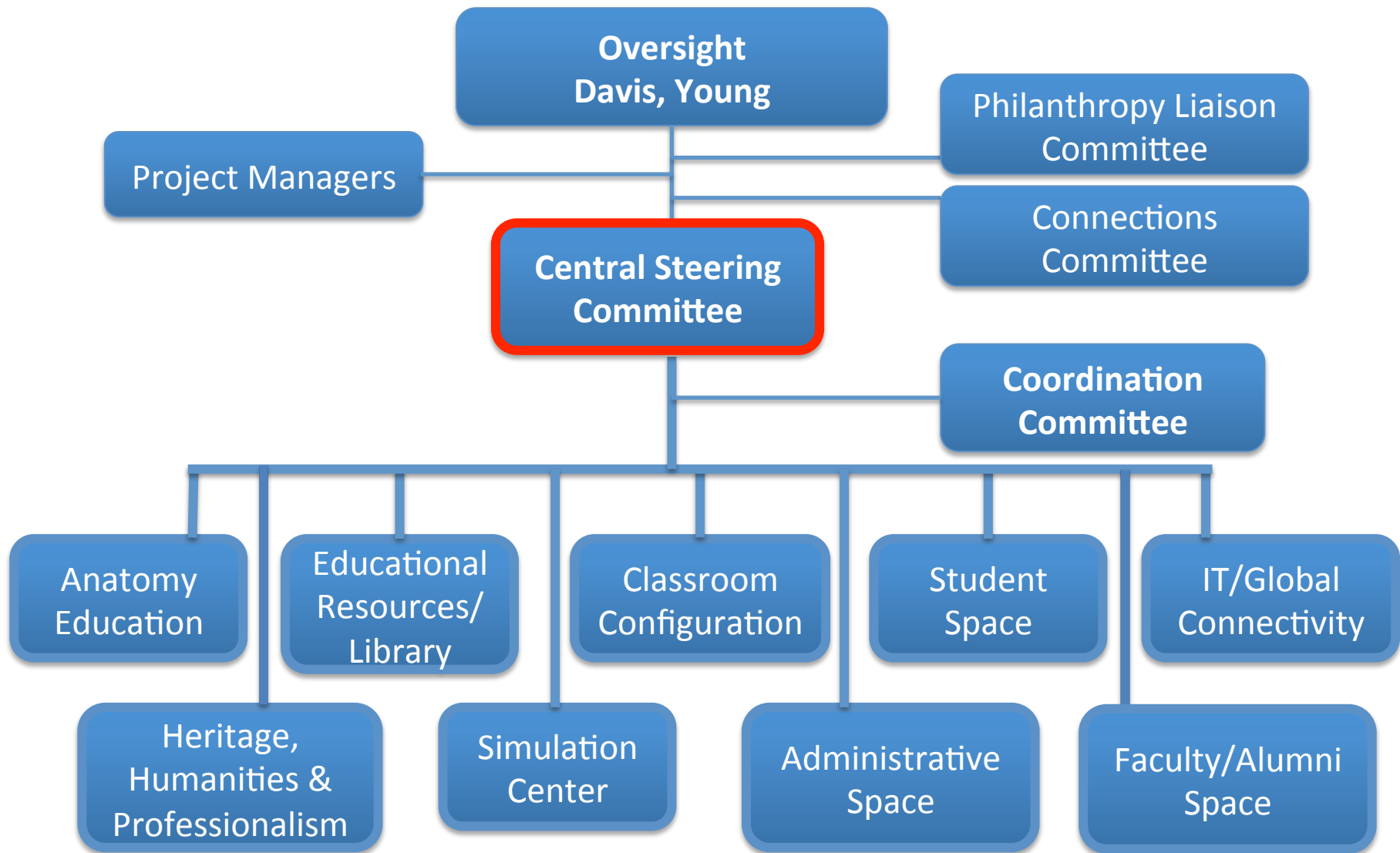
Pedagogy: To exchange ideas in such a way that our students receive the best possible curricula, equipment, technology and learning approaches for the school's respective tracks.

# Goals

Synergy 2: The concentration of such brilliant and dedicated students and faculty in a single space provides incomparable opportunities to share ideas and approaches in formal and informal ways. The greatest innovations are likely to be ones we haven't even imagined.

# Goals

Savings: By integrating both programs in one space, the institutions reduce inefficiencies and preserve resources for investments in high value initiatives rather than duplicative offerings.



# CSC Committee Members

CWRU	CCLCM
Clifford V. Harding, MD PhD	Kathleen Franco-Bronson, MD
Robert Haynie, MD PhD	James Stoller, MD
Clint Snyder, PhD	Gene Barnett, MD
Amy Wilson-Delfosse, PhD	John Tetzlaff, MD
Keith Armitage, MD	Guy Chisholm, PhD
Student -- Candida (Didi) Goodnough	Student – Mia Williams
Student -- Ashley Javanovski	Student -- Cheng-Cheng Zhu
Jill Stanley	Andrea "Andi" Jacobs
Steve Campbell	Bill Peacock, ad hoc
John Wheeler, ad hoc	Frank Aucremanne, ad hoc
VD Education -- TBD	

# Ellenzweig Architecture/Planning

Cambridge, MA

50 person firm specializing in health science education and research

Michael Lauber, FAIA – Principal

Shirine Boulos Anderson, AIA, LEED AP - Principal

# Planning Process: Programming & Test Fit

## Goals and Objectives

- Describe and define all programs
- Align the key space drivers
- Document functional relationships
- Create detailed space lists
- Study opportunities and constraints
- Validate space and functional program
- Resolve major issues
- Verify program, planning and budget alignment



# Committee Expectations

- Report to Central Steering Committee (CSC)
- Meet regularly during programming in preparation for meetings with program architect
- Meet and provide input to program architect
- Review and validate requirements generated throughout programming process
- Advise CSC on committee priorities as required
- Communicate project development to appropriate constituencies
- Consider Adjacencies, Efficiencies, Flexibility and **THE FUTURE**