

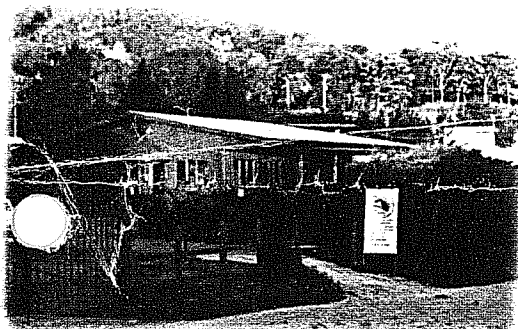
Costa Rica

Learn Spanish Through Total Immersion At One Of Our Two Locations
Heredia or the Monteverde Cloud Forest



2000-5,500

Programs of 2, 3, 4 weeks or more
include:



C.P.I. Monteverde

- 4 or 5.5 hours of class per day
- 9 levels of Spanish; text books included
- Maximum of 4 students per class
- Option to divide your time between 2 fully staffed and equipped locations
- Experienced professors specifically trained in C.P.I. methodology
 - Homestay
 - Bilingual Office Staff
 - Airport Pick-Up
 - U.S. College Credits
 - Access to E-mail
- Weekly bank and mail service
- Dance Classes
- Lectures



C.P.I. Heredia

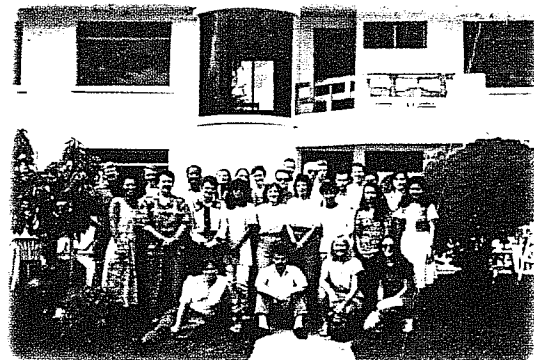
- Volunteer Opportunities-social/environmental

For more information contact:
Centro Panamericano de Idiomas (C.P.I.)

P.O. Box 151-3007
San Joaquín de Flores, Heredia
COSTA RICA
E-mail: anajarro@sol.racsa.co.cr
Homepage: <http://www.westnet.com/costarica/cpi.html>
Heredia - Telephone/Fax:
(506) 265-6213
Tel.: (506) 265-6866
Monteverde - Telephone/Fax:
(506) 645-5026



Students in class



Students and teachers at C.P.I.

C.P.I. provides the best combination of intensive language study, a warm family atmosphere and a safe location in both Heredia and Monteverde.

The programs are flexible and tailored to meet the learning goals of the student. Our method emphasizes practice in conversation combined with grammatical exercises. The text books used in class (a vocabulary book and grammar books for each level: beginner, intermediate, advanced) were developed by C.P.I.'s director, Romy Morales. Instructional materials include: videos, audio cassettes, reading materials and grammatical exercises. All instructors are university trained and are required to attend a four week training session in C.P.I. methodology prior to being accepted on staff.

Total immersion is possible by living with a Costa Rican family where you not only have the opportunity to practice Spanish but will gain invaluable insight into the culture. C.P.I. places one student per family; couples and families can be accommodated. The host families, all of which are carefully screened, provide a private room (the bath is shared), breakfast, dinner and laundry service.

C.P.I. HEREDIA

Local Character: C.P.I. Heredia, located in the town of San Joaquín de Flores, is situated in a middle to upper-middle class Costa Rican neighborhood. Here you will experience firsthand Costa Rican culture as you interact with your homestay family and the very friendly people of this small town. Although San Joaquín is small you will not feel isolated since it is only 10 minutes from the city of Heredia, a city which offers many modern conveniences.

Climate: Heredia has a comfortable climate of 80 F° year-round; night time temperatures are around 70 F°. During the rainy season (May-December) the mornings are sunny while it typically rains in the afternoons.

Local Activities: Within walking distance of the San Joaquín campus students may: visit the butterfly farm, take a tour of a local coffee plantation to learn about the process of coffee production, hike to the Barva Volcano, or take a trip to a house/museum decorated in the antigua style of Costa Rica. This is in addition to all of the activities you can undertake in nearby Heredia, Alajuela and San José. San Joaquín is an excellent base; because of its central location you can travel easily to San José and take a bus connection to any part of the country.

What to Bring: Sun screen, sun glasses, bug repellent, a light jacket or sweater for the evenings, comfortable walking shoes, cotton pants, shorts, collared shirts or tee-shirts (casual wear is typical; men will not need a tie), one nice outfit for a night out (in many discos men cannot enter with sneakers and tee-shirts). Don't forget an umbrella if you come in the rainy season. You can purchase most toiletries in the pharmacies; prescription drugs should be brought with you.

C.P.I. MONTEVERDE

Local Character: Monteverde is popularly known as an area founded by 12 North American Quaker families in 1952 but even before the Quakers journeyed to this mountain region the Ticos had already established a settlement there. The Quakers have adapted to the Tico culture and are bilingual in Spanish and English. However, the Quaker influence is still strongly felt, particularly in terms of the Quaker commitment to the sustainable development of the community and the conservation of the cloud forest reserves.

Climate: Monteverde has an average temperature of 60 F° to 70 F°. The climate is typically cool and at times wet. The exception is in March and April when it is warmer and the climate is dry. To be prepared for the months outside of March and April you should bring rain gear and boots.

Local Activities: In Monteverde there are various points of interest: you may visit the Monteverde Cloud Forest or the Santa Elena Forest Reserve (one can camp here as well), hike the trails of either the Bajo del Tigre, International Children's Rainforest or the Finca Ecologista, walk to the San Luis falls, ride horseback to El Mirador to see lava shooting from the cone of Arenal Volcano, bathe in natural thermal waters, or take a week-end trip to the beautiful beaches of Guanacaste. Furthermore, there are a variety of weekly events sponsored by local organizations which include: movie night, guest lecturers, sports, etc. Monteverde also hosts a yearly music festival in the month of January which features groups from Costa Rica and Latin America.

What to Bring: Rain gear (boots, rain slicker) for those months other than March and April, bug repellent, a flashlight and any items you will need to pursue your interests (camping gear, hiking boots, mountain bike). You should dress according to the activities you will likely undertake. As a general rule dressing in layers is best for Monteverde: tee-shirts under long-sleeved button downs, cotton pants, and one or two pairs of shorts. You should also bring some warmer clothes: any type of warm jacket with a hood, socks, and warm pajamas since the climate varies daily.