

# a Foundation of Support

## COLLABORATING FOR THE FUTURE

Foundation grants are critical to Case Western Reserve University's ability to foster pioneering research and sustain its academic excellence. The groundbreaking progress the university makes in collaboration with foundations, both in the community and across the country, is equally beneficial to the university, its partners, and society as a whole.

From family and neighborhood organizations to national advocacy groups, foundations play a key role in keeping Case Western Reserve on the cutting edge of research. When these groups combine in support of university programs, they help make history.

The Blanchette Hooker Rockefeller Fund's 10-year, \$2.3 million legacy of support for Alzheimer's disease research exemplifies the power of foundation-university partnerships. Recent estimates show that as many as 4.5 million Americans suffer from Alzheimer's, an irreversible and—thus far—incurable condition. Moreover, because the risk of developing Alzheimer's disease increases with age, the number of affected individuals is expected to increase significantly as the population grows older.

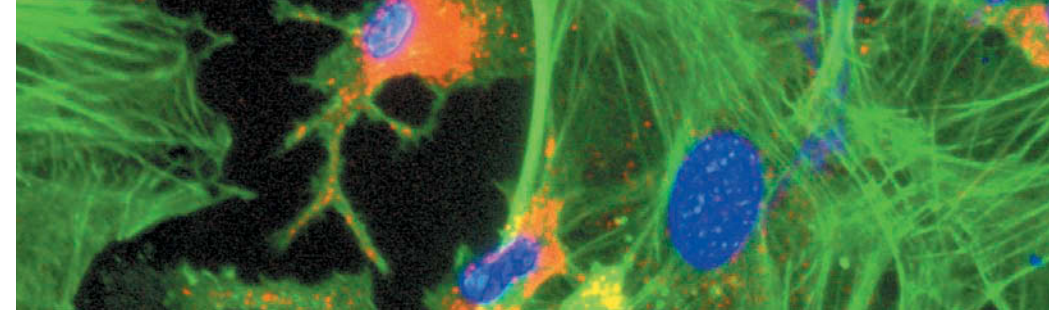
Through his work as director of the Alzheimer's Research Laboratory at Case Western Reserve, Gary Landreth, Ph.D., is investigating ways to keep this prediction from becoming a reality. Landreth and his team are conducting laboratory

tests on two new classes of Alzheimer's drugs, one of which is already being studied in several large, ongoing clinical trials by GlaxoSmithKline.

In addition to leadership support from the Blanchette Hooker Rockefeller Fund, Landreth's study has attracted funding from GlaxoSmithKline; the National Institutes of Health; the American Health Assistance Foundation and the Coins for Alzheimer's Research Trust (CART), an initiative of the Rotary Club.

“The generous support of the Blanchette Hooker Rockefeller Fund over the past 10 years has been absolutely essential to our success. It has particularly allowed us to take on high-risk projects that would have otherwise been impossible.”

~ Gary Landreth, Ph.D.



**Understanding Alzheimer's disease** has become increasingly important as the population ages. Gary Landreth, Ph.D., and a team of students are looking for a treatment for the disease in the School of Medicine's state-of-the-art research lab.

For more than 30 years, the Case Western Reserve University Center on Aging and Health (UCAH) has been an interdisciplinary point of excellence in gerontological and geriatric research, education, and practice. The center is supported by foundations in the Cleveland community and across the nation and is a strong example of how collaborative foundation support builds and maintains successful university programs.

The John A. Hartford Foundation, for instance, has helped fund geriatric medicine at the university for nearly 40 years. Most recently, it has supported the Frances Payne Bolton School of Nursing's efforts to promote careers in geriatric advanced practice nursing by granting scholarships to qualified Case Western Reserve students who are interested in the field.

The McGregor Foundation, a Cleveland organization dedicated to meeting the needs of the economically disadvantaged and elderly, is also a steadfast supporter of aging research at Case Western Reserve. The foundation recently provided a grant to the President's Strategic Initiatives Fund that President Barbara R. Snyder supplemented with other discretionary dollars. The full combined total, \$200,000, was given to the center to foster interdisciplinary geriatric research.

