

# RESILIENT CLEVELAND



**Climate Resilience & Urban Opportunity Initiative**



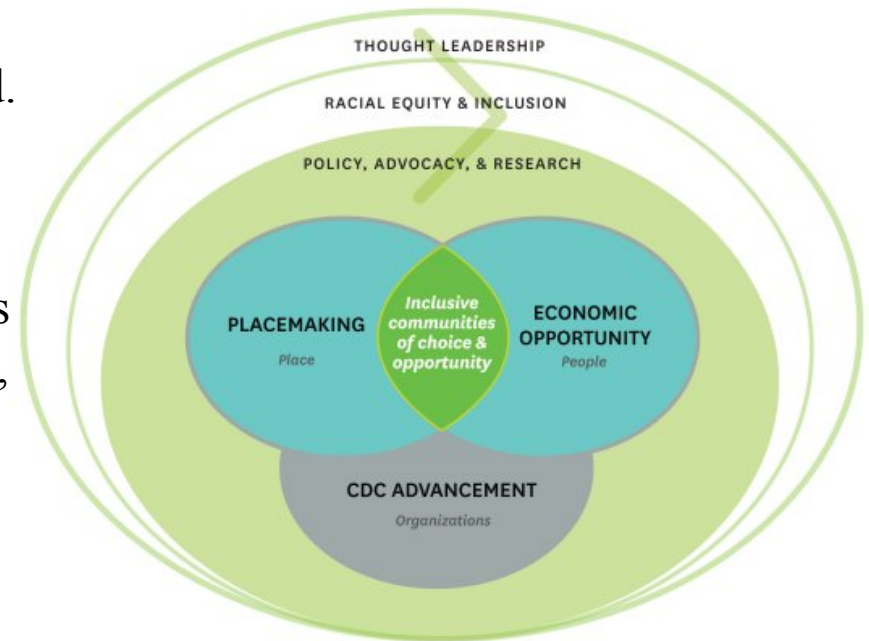
# Who are we?



**Mission:** to foster inclusive communities of choice and opportunity throughout Cleveland.

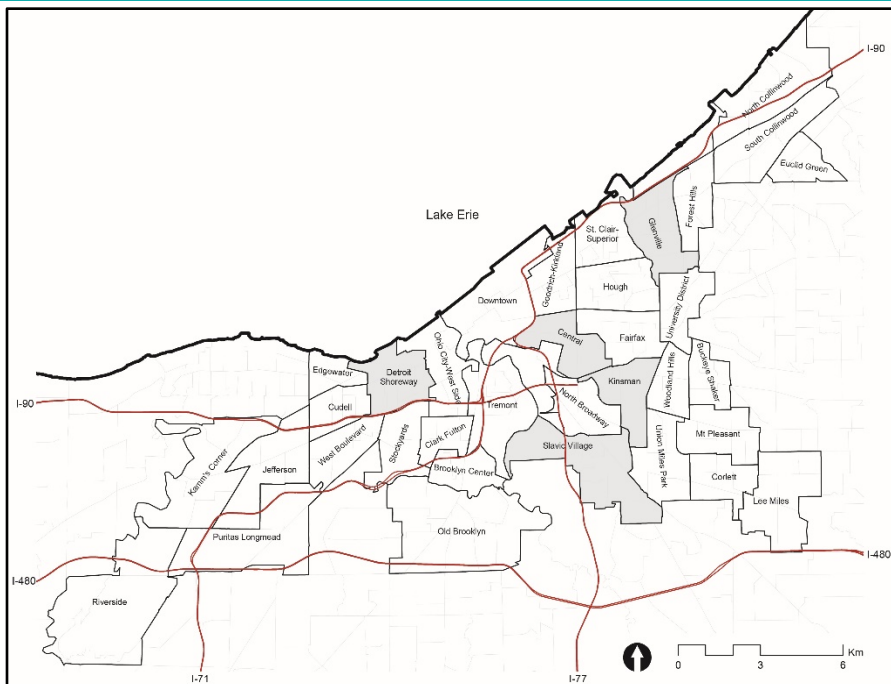
**Vision:** Cleveland's neighborhoods are attractive, vibrant, and inclusive communities where together, people from diverse incomes, races, and generations thrive, prosper, and choose to live, learn, work, invest, and play.

**Strategic Objective:** Improve climate resiliency in Cleveland's neighborhoods, with a particular focus on the 4 targeted neighborhoods in the Cleveland Climate Resilience and Urban Opportunity Initiative.

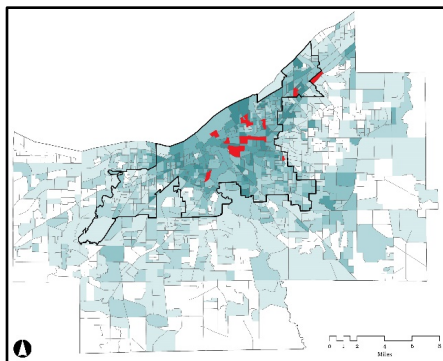


# Context and Climate Impacts

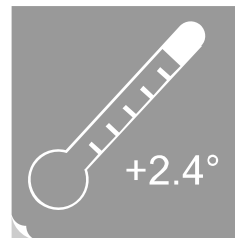
## Cleveland Neighborhood Progress



**Four Cleveland, Ohio Neighborhoods:** Glenville  
Slavic Village, Central-Kinsman, & Detroit-Shoreway



**Vulnerability Assessment:**  
Maps were used to determine which neighborhoods in Cleveland lacked social and/or environmental resilience to climate change.



### Increased Temperatures:

Higher temperatures will increase the number of heat-related deaths, exacerbate air pollution, and reduce water quality in Lake Erie.



### Changes in Precipitation Patterns:

This may cause flooding, sewer overflows, poor water quality, and increase maintenance costs.



### Extreme weather events:

Weather-related threats include severe storms, flooding, lake-effect snow, tornadoes, and temperature extremes. A warming climate, and decreasing ice cover on Lake Erie, may increase the frequency and intensity of these extreme weather events, threatening human life and causing property damage.

# Strategies & Partners

Cleveland  
Neighborhood  
Progress



**Disaster Response:** Shared awareness of emergency management best practices in all four neighborhoods; policies and operational approaches in place to protect vulnerable populations; increased social cohesion.



**Weatherization:** Healthier homes, reduction of energy use, lower utility bills, and reduced peak energy loads across all four neighborhoods; more resilient infrastructure citywide.



**Climate Action Plan Update:** Shape city priorities and policies utilizing equitable climate action planning, more widespread understanding of plan's purpose and objectives, and implementation that will ensure improved outcomes in health, access to green jobs, and greater climate-related resilience.



**Vacant Land/Infill Development:** A city that manages its land resources to foster strategic new development, while preserving key areas for stormwater management, public green space, and urban reforestation.



# Resident Partners: Climate Ambassadors

Cleveland  
Neighborhood  
Progress



## What is a Climate Ambassador?

Climate Ambassadors are neighborhood volunteers who are working to understand the impacts of climate change in Cleveland and help prepare residents for the challenges that lie ahead. The main areas of focus include Emergency Preparedness, Weatherization, the City of Cleveland's Climate Action Plan, and Vacant Land Policy.

Currently, there are 16 Climate Ambassadors in the neighborhoods of Central-Kinsman, Detroit Shoreway, Glenville, and Slavic Village.



## Why should you care?

Despite a relatively mild climate and abundant access to fresh water, Cleveland is facing challenges that put environmental and human health at risk. Cleveland also has social conditions and land use patterns that may increase the harmful effects of climate change.

## ResilientCLE... It Starts with You!

For more information on **Emergency Preparation** or **ResilientCLE** call 216-830-2770 or visit [www.clevelandnp.org](http://www.clevelandnp.org)



# Visioning Urban Spaces

Cleveland  
Neighborhood  
Progress

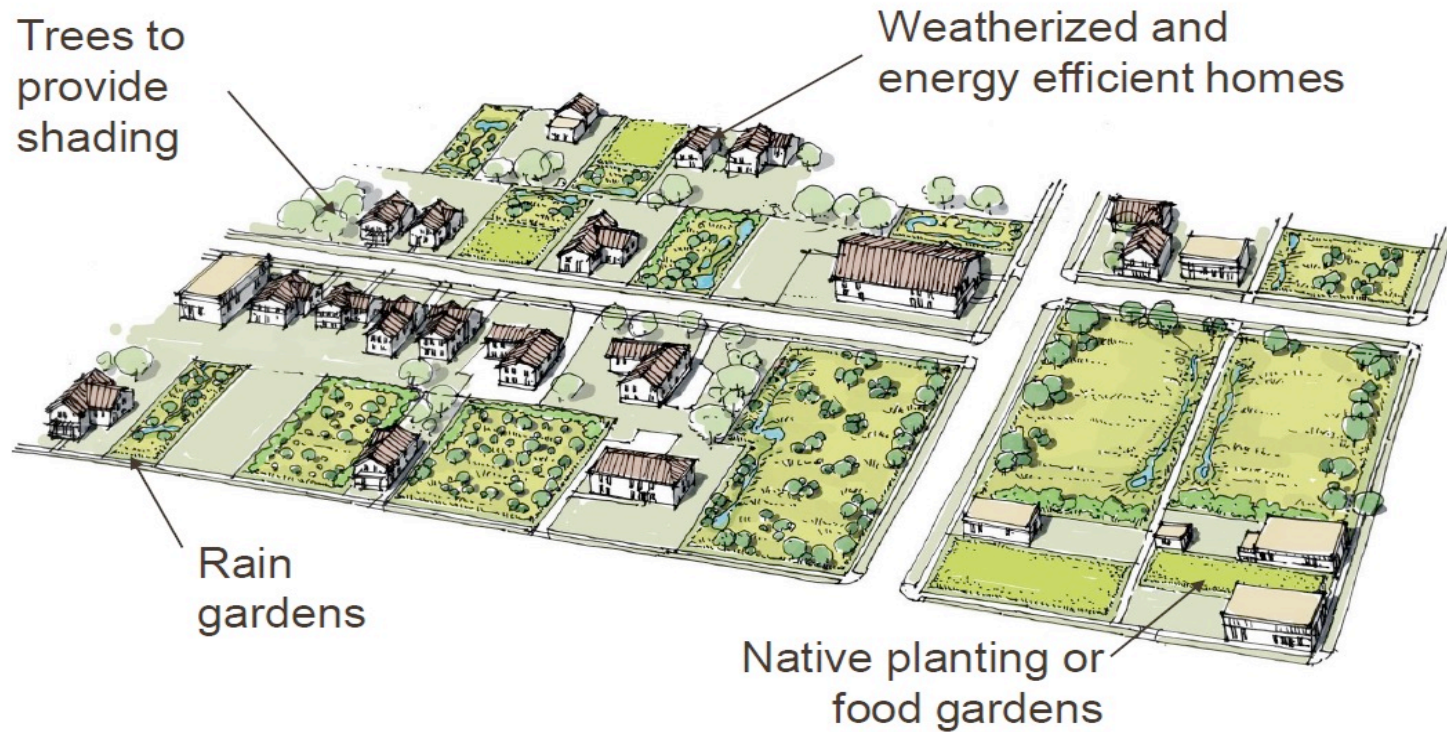
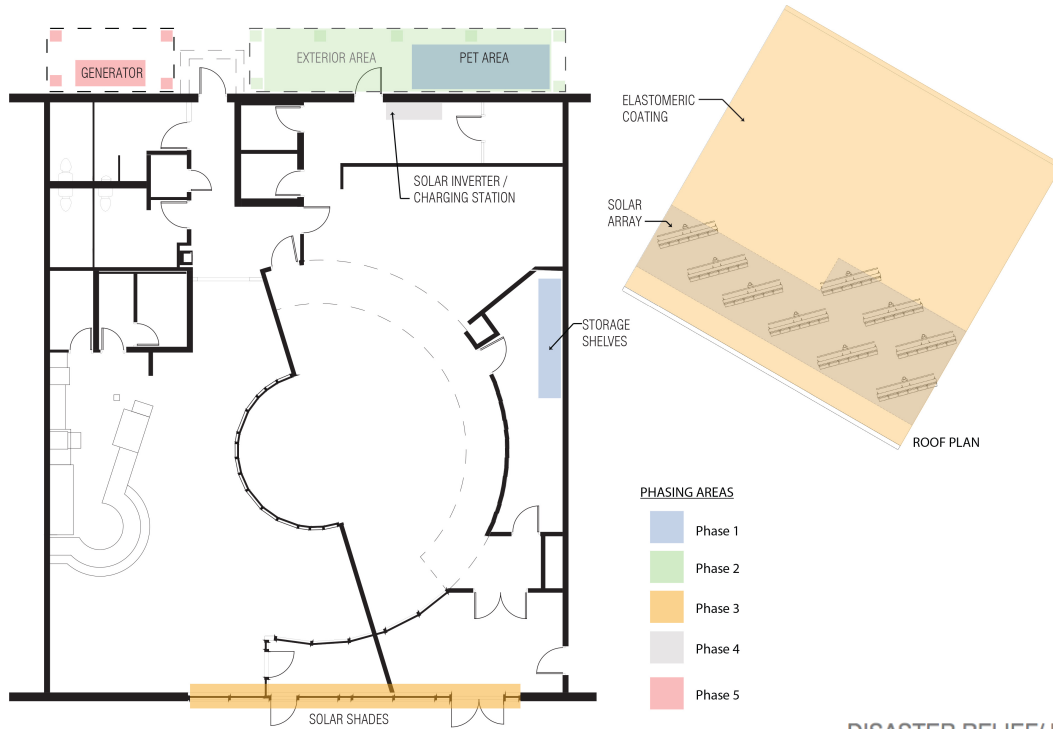


Image Source: Kent State University Cleveland Urban Design Collaborative

# Project Example: Cooling Center

Cleveland  
Neighborhood  
Progress



## Cornucopia Place Cooling Center

**Phase 1:** Supplies Storage and Pet Care **\$12,000**

**Phase 2:** Exterior Comfort Area **\$3,400**

**Phase 3:** Solar Protection (roof coating) **\$5,000**

**Phase 4:** Solar Array (6kw array+ charging station & solar inverter) **\$23,000**

**Phase 5:** Generator Set **\$27,000**

**Mobile Cooling Center**  
**\$30-40,000** grid tied system  
**\$65-75,000** off grid

DISASTER RELIEF/ EMERGENCY RESPONSE

MICROGRID INFRASTRUCTURE

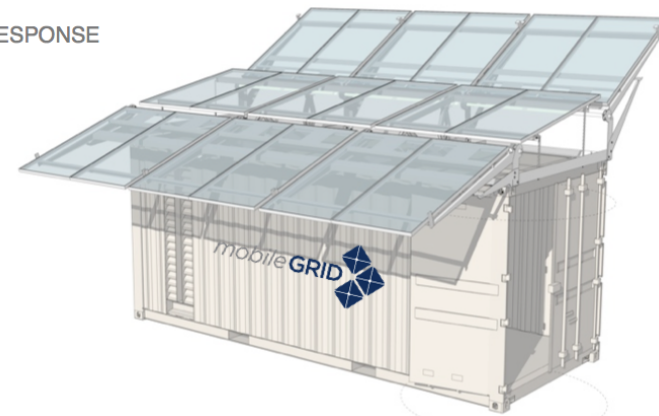
SECURITY/ FIELD OPERATIONS

COMMERCIAL

HUMANITARIAN

EDUCATION/ OUTREACH

RECREATIONAL







Someday our children, and our children's children, will look at us in the eye and they'll ask us did we do all that we could when we had the chance to deal with this problem and leave them a cleaner, safer, more stable world. I want to be able to say, 'Yes, we did.'

—President Barack Obama