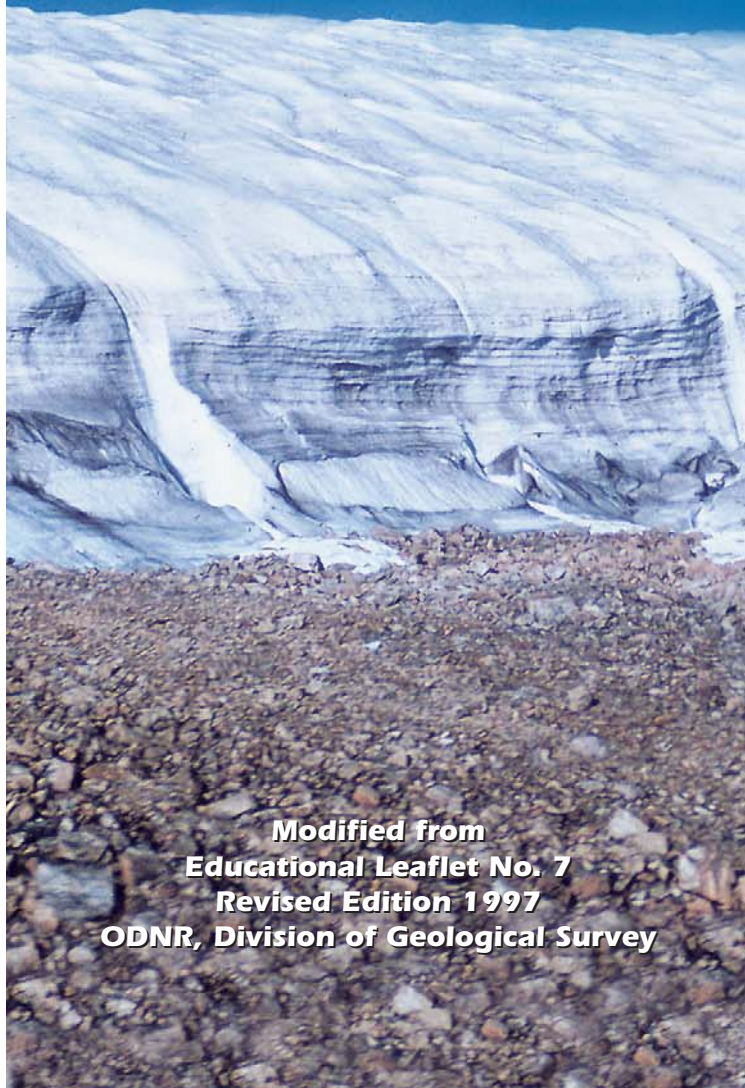


The **Ice Age** *in* **Ohio**

by **Michael C. Hansen**



**Modified from
Educational Leaflet No. 7
Revised Edition 1997
ODNR, Division of Geological Survey**

INTRODUCTION

The Pleistocene Epoch, commonly known as the Ice Age, is a small segment of geologic time spanning most of the last 2 million years of the Quaternary Period. The Pleistocene ended about 10,000 years ago, which was the beginning of the Holocene or Recent Epoch. The sediments deposited by or in association with the glaciers of the Pleistocene represent the first well-documented deposits in Ohio since the early Permian Period, about 280 million years ago. Erosion and nondeposition during the latter part of the Permian, all of the Mesozoic Era, and most of the Tertiary Period resulted in no preserved rock record in Ohio for this immense span of time. Despite the comparatively short length of the Pleistocene, it has been one of the most influential geologic episodes in the cultural and economic development of Ohio. Sediments deposited during the Pleistocene, especially in the latter portion of this epoch, cover all but the southeastern third of the state and have been only slightly modified by erosion since melting of the last glacier. These sediments constitute the rich agricultural soils of Ohio, furnish raw materials for construction such as clay and sand and gravel, and form extensive aquifers. Pleistocene deposits are environmentally important as sites for landfills, as source material for some landslides, and as a medium that enhances ground motion during earthquakes. The configuration of the glaciated landscape has directly influenced settlement and development patterns across the state.

The Pleistocene Epoch began when the climate cooled and ice and snow accumulated in northern Canada to a depth sufficient to form a great ice sheet that spread outward under its own weight. Eventually the ice pushed into the northern United States. It is estimated that the ice may have been a mile thick in the Erie basin and 1,000 feet thick in the central part of Ohio. The buildup, spread, and melting of an ice sheet occurred several times during the Pleistocene Epoch. Each glaciation was followed by an interval of warmer climate known as an interglaciation.

The cause of the climatic fluctuations of the Pleistocene that led to the development of huge continental glaciers is poorly understood, and many theories have been advanced to explain these perturbations. It is probable that glaciations result from natural, long-term variations in the amount of solar radiation that reaches the Earth's surface, especially in the northern hemisphere. Three factors—the tilt of the Earth's axis, its wobble, and the path of the Earth around the Sun—all vary slightly, yet periodically, through time in what are called Milankovitch cycles. When the cycles of these three factors coincide to give the northern hemisphere less than average solar radiation, the Earth's climate becomes cooler and glaciation eventually results.

The Ice Age in Ohio

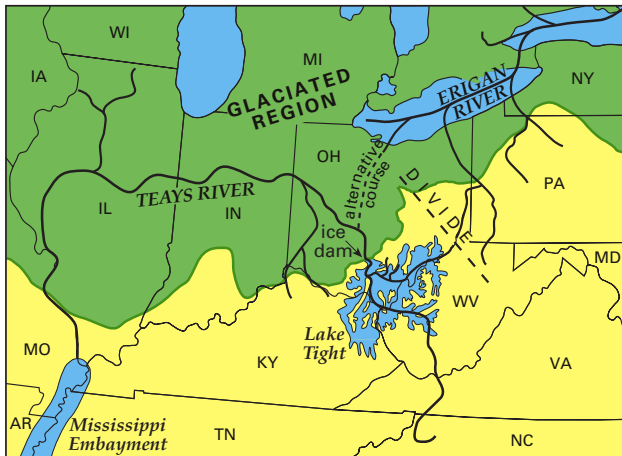
The earliest series of ice advances in North America were formerly referred to as the Nebraskan and Kansan Stages, but now are referred to as pre-Illinoian glaciations. These advances are named for the states where their deposits were first studied and described. Early glaciers greatly disrupted drainage patterns and modified the landscape; however, their deposits are poorly known in Ohio. Deeply weathered pre-Illinoian glacial deposits have been recognized in southwestern Ohio near Cincinnati and in a few isolated exposures in northeastern Ohio.

Following a relatively warm interglaciation, perhaps warmer than our present climate, ice of the Illinoian glaciation advanced far into Ohio, reaching into northern Kentucky. This event began about 300,000 years ago. The Illinoian ice caused further drainage modifications and left distinctive morainic deposits extending from southwestern Ohio to north-central Ohio and into northeastern Ohio. Outwash deposits presumed to be of Illinoian age are preserved as high terraces along the valley walls of major rivers such as the Hocking, Great and Little Miami, Muskingum, Ohio, and Scioto.

After a long interglaciation, during which extensive weathering of Illinoian glacial deposits occurred, the most recent ice sheet, the Wisconsinan, began to form in Canada about 70,000 years ago. However, radiocarbon dates suggest that Wisconsinan ice did not reach northern Ohio until about 24,000 years ago. The Wisconsinan glaciation (and probably also the earlier glaciations) was marked by several major fluctuations of the ice margin. Wisconsinan glacial deposits blanket the surface throughout the northern, central, and western portions of the state. The last of the ice was gone from Ohio by about 14,000 years ago. Wisconsinan deposits are well preserved because of the relatively short interval of erosion and weathering since their deposition. Events that occurred during the last 50,000 years, which includes much of the Wisconsinan, can be accurately dated by measuring the amount of radioactive carbon (C^{14}) in organic material such as wood, shell, and bone collected from glacial deposits. The glacial map shows the types and distribution of these deposits in Ohio.

The changes of the Ohio landscape that were wrought by the ice sheets greatly influence our modern culture and economy. Some of the major modifications are presented below.

DRAINAGE CHANGES



Preglacial Teays River in north-central U.S.

Prior to glaciation, the western and southern portion of Ohio was drained by a major river system known as the Teays, which had its headwaters in the Appalachian highlands of North Carolina and Virginia. The northeastern third of Ohio was drained by the Erigan River, which flowed northeasterly through the basins now occupied by Lake Erie and Lake Ontario. From its source, the Teays River flowed northwestward across West Virginia and entered Ohio near Portsmouth. The Teays River took a northward route across southern Ohio and, in a classic interpretation, swung westward across central Ohio into Indiana. Continuing its westward path across Indiana and Illinois, the Teays eventually joined the ancestral Mississippi River in western Illinois. Some geologists suggest that the deep, buried valley in western Ohio represents an ice-front stream formed in association with the earliest glacier and that the Teays River actually continued northward and joined the Erigan River. Multiple glaciations have greatly eroded and deeply buried these river valleys, making interpretations difficult.

Arrival of the earliest glacier blocked the northwestward-flowing Teays River and its numerous tributaries, creating a 7,000-square-mile lake in southern Ohio and adjacent parts of Kentucky and West Virginia. This lake, named Lake Tight, after William G. Tight, a geologist who first studied the Teays River, was partially filled with lake clays, called the Minford clay. The lake eventually spilled over low drainage divides and established new drainage systems. These new drainage channels cut below the elevation of the Teays, forming a drainage system known as Deep Stage. The modern Ohio River was formed as a result of these complex drainage changes.

Abundant evidence of drainage changes can be seen in Ohio. In the glaciated portion of the state the old Teays River system is represented by deep valleys cut into the bedrock. The valleys now are filled with glacial sediments. In unglaciated southern Ohio the Teays River valley and the valleys of its tributaries can be seen as broad flat valleys at an elevation higher than that of modern stream valleys.

GLACIAL DEPOSITS

The sediments left behind by ice sheets and meltwater are referred to as glacial drift and consist of boulders, cobbles, sand, silt, and clay that had been gouged and scraped from the landscapes across which the ice moved. Drift deposits can be classified according to their mode of origin, the materials of which they are composed, or the landforms which they created.

An unsorted glacial sediment composed of materials ranging in size from boulders to clay and deposited directly by ice is called till. Till is deposited directly at the bottom of the advancing ice or by the melting of stagnant ice. Till that forms a

The Ice Age in Ohio



These intricately gouged and polished grooves in the Devonian-age Columbus Limestone on Kelleys Island in Lake Erie are among the largest and best preserved glacial grooves in the world. It is thought that the grooves were cut by subglacial meltwater and rocks frozen in the base of the mile-thick Wisconsin ice as it advanced across the Erie basin about 20,000 years ago. These grooves, adjacent to Kelleys Island State Park, were exposed in 1972 by the Ohio Historical Society and are maintained as a State Memorial site.



Exposure of till, an unsorted glacial sediment that is a mixture of rock fragments ranging from clay size to boulders. Till represents material scraped up by the ice during its southward advance and deposited beneath advancing ice or as a sediment blanket when the ice melted. Multiple Wisconsin-age till beds, representing several ice advances and retreats, are visible in this exposure along Rocky Fork Creek, near Gahanna, Franklin County. Glacial erratics, many of Canadian origin, have been eroded from the till and litter the stream bed.

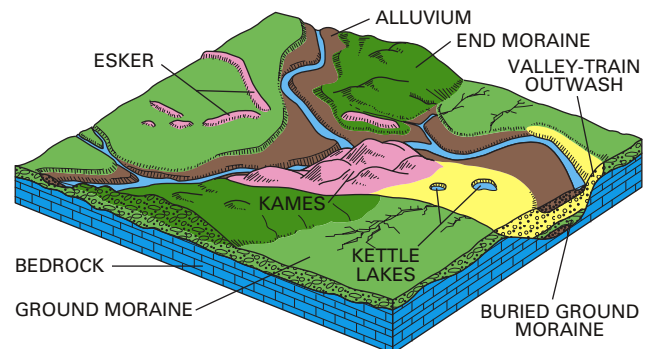
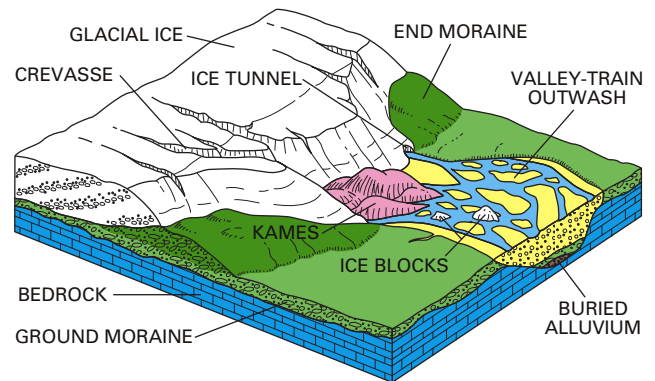
fairly flat blanket over bedrock or older sediments is called ground moraine. Where the ice-sheet margin halted for a period of time a thick, linear ridge of till was deposited along the ice edge. Such ridges are called end moraines. The wide distribution of end-moraine belts in Ohio is evident on the map of glacial deposits. Morainic deposits commonly contain boulders, some weighing many tons, that were carried by the ice from as far away as Canada. These boulders of crystalline igneous and metamorphic rocks, called erratics, are a familiar sight in the glaciated portion of Ohio.

Kames and eskers, another major group of glacial deposits, formed in contact with ice and running water. Kames are hummocky mounds of stratified (layered) sand and gravel deposited by meltwater flowing across the ice and pouring its sediment load into holes and crevasses along the ice margin or in stagnant ice. Kames are numerous in some portions of Ohio.

Eskers are ridges of stratified sand and gravel deposited on, within, or beneath the ice by meltwater rivers flowing on the ice surface or under hydrostatic pressure in pipeline tunnels. When the ice melted, the long linear or sinuous deposits were left behind, marking the courses of the former channels or tunnels. Eskers, which are commonly oriented parallel to the direction of last ice movement, may be found in several areas of Ohio.

As the huge ice sheets melted, great volumes of meltwater flowed in the river valleys, carrying with it, far beyond the glacial border, large amounts of sediment that had been scraped up by the glacier on its long journey from Canada. This sediment, termed outwash, consists mostly of sand and gravel and filled the valleys of such rivers as the Hocking, Great and Little Miami, Muskingum, Ohio, and Scioto. These sand and gravel deposits are an important economic resource for the construction industry and benefit areas of the state that are beyond the southern limit of glaciation. Outwash deposits also are a major source of ground water.

Deposits of layered silt and clay accumulated in lakes in basins or in valleys whose outlets were dammed by glacial ice or glacial deposits. Lake deposits commonly are preserved as terraces along valley walls where the modern stream has

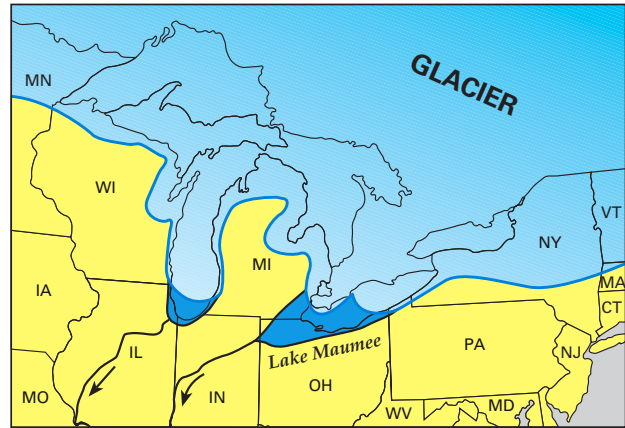


Landscape during maximum advance and after retreat of ice.

The Ice Age in Ohio



Stage's Pond, a kettle lake formed when a large block of ice from the retreating Wisconsinan glacier was buried by sediment. When the ice block melted, a water-filled depression remained. Stage's Pond, near Ashville in Pickaway County, is a State Nature Preserve.



Highest Lake Maumee (Maumee I) stage in the Erie basin. Drainage was westward across Indiana into the Wabash River system. Modified from Hough (1958).

eroded the lake deposits in the center of the valley. Other lake deposits are found in shallow basins between moraines, which acted as barriers to drainage. Small ponds and lakes, known as kettles, formed in association with moraines when blocks of ice became detached from the glacier and were buried by sediment. When the ice melted, a water-filled depression was formed. Commonly, kettles contain deposits of calcareous marl which are overlain by peat. Many of these kettles have become filled with sediment and peat and today are represented by swampy depressions.

Lake Erie is one of Ohio's most important resources that was formed as a direct result of the Pleistocene glaciers. The initiation of lakes in the Erie basin began after ice had retreated north of Ohio about 14,000 years ago. A complex series of lakes, some of which were up to 230 feet deeper than the present lake, occupied the Erie basin during the last phases of the Pleistocene. Some of these lakes drained into the Mississippi River via the Wabash River when the modern drainage outlet into the St. Lawrence River was blocked by ice. Northern Ohio, particularly northwestern Ohio, has abundant lake deposits that formed in these early, more extensive lake stages. Several sets of sandy ridges, each set of which is at a similar elevation, mark beaches formed along the shorelines of these lake stages. Modern Lake Erie reached its present form only about 4,000 years ago.

At many places in the state, bedrock surfaces show scratches and grooves cut by pebbles, cobbles, and boulders frozen in the base of moving ice. These scratches (striations) are useful to geologists because they indicate the direction of movement of the glacier. The exceptionally large world-famous glacial grooves on Kelleys Island in Lake Erie, however, may have been formed by a complex process involving gouging ice and running, sand-charged water under hydrostatic pressure beneath the ice.

PLEISTOCENE LIFE

Northern species of plants that today occur in Canada were common in Ohio during the Pleistocene. These plants include trees such as spruce, fir, tamarack, cedar, hemlock, and larch. Owing to unique environmental conditions, several places in Ohio retain this glacial vegetation as relict species. Cedar Bog in Champaign County is one example. This northern or glacial vegetation persisted in Ohio until about 10,000 years ago when the climate warmed and the coniferous forest was replaced in a comparatively short time by oak-dominated deciduous forests such as are now found growing in Ohio.

Many, although not all, animals that roamed Ohio during the Pleistocene were quite different from those found here today. Species which are either extinct or are no longer present in Ohio include mammoth, mastodon, muskox, caribou, peccary, short-faced bear, elk-moose, ground sloth, and giant beaver. Skeletal remains of these animals commonly are found in clay, marl, and peat that was deposited in former glacial lakes, in sand and gravel deposited by glacial meltwater, and in caves and sinkholes. Sabertooth cats and dire wolves have not been found in Ohio as yet, but it is probable that they lived here because their remains have been found in nearby states. The cause of extinction of many of these animals about 10,000 years ago is uncertain, but it may be related to the rapid climatic and vegetational changes that occurred at this time.

The first human migrants into North America, a culture known collectively as Paleoindian, lived in Ohio during the last phase of the Wisconsinan glaciation. They were nomadic hunters and gatherers who followed the great herds of Pleistocene animals across Bering Strait from Asia into North America. Although no skeletal remains of Paleoindians have been found in Ohio, several mastodon skeletons found in the state show evidence that the animal was butchered. Exquisitely crafted flint spear points, known as fluted points because of the groove or flute on each side, are unique to the Paleoindian culture and are widely distributed in the state.

The Ice Age in Ohio

LEGACY OF THE ICE AGE

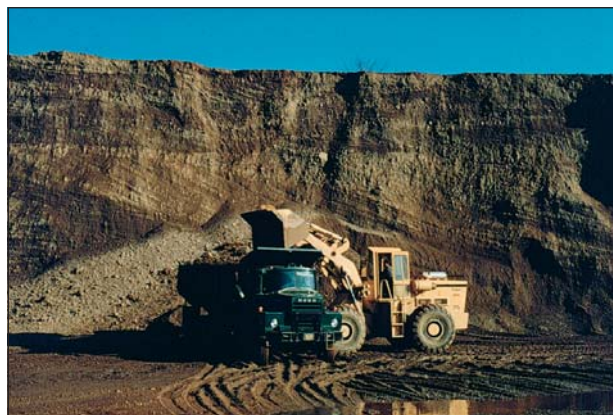
All Ohioans benefit on a daily basis from the legacy of the Pleistocene Ice Age. The rich agricultural soils formed on glacial deposits across two-thirds of the state produce a bounty of vegetable and animal products that are consumed by Ohioans and constitute a valuable export. Waterways formed in association with the ice sheets, such as Lake Erie and the Ohio River, are avenues for transport of these and other products. These bodies of surface water as well as abundant supplies of ground water stored in some glacial sediments provide a nearly limitless supply of this vital commodity for both domestic and industrial use.

Mineral commodities formed in association with the glaciers include sand and gravel, peat, and clay. Sand and gravel deposits, in addition to being aquifers, are an integral commodity for the construction industry. More than 50 million tons of sand and gravel are produced annually from about 300 mining operations in more than 60 Ohio counties for use in road construction, building, concrete, and asphalt. Traditionally, Ohio ranks in the top five states in the production of sand and gravel. This low-cost-per-unit resource is available inexpensively at construction sites because it is so widely distributed that transportation costs are low. Glacial clays are mined in several Ohio counties for manufacture of common clay products such as brick and for use as liners in landfills. Peat is mined in several Ohio counties for use as mulch and as a soil conditioner. Numerous streams in the glaciated portion of the state produce a few small flakes of gold of presumed Canadian origin. Panning for this placer gold is an enjoyable hobby for many people. In addition to gold, six diamonds have been reported from glacial deposits in Ohio.

Environmentally, glacial deposits are important. Thick, uniformly impermeable deposits of clay-rich till and lake clays may be good sites for landfills because the clays prevent landfill fluids from leaching into ground-water supplies. Glacial deposits of sand and gravel provide excellent, well-drained sites for homes, businesses, and other structures.

A few of the many types of glacial deposits in Ohio have the potential to create environmental problems. Some lake clays, particularly where they are associated with sloping ground, are prone to landsliding. Notable for landslide problems are clays in the Cuyahoga Valley of northern Ohio, valleys filled with Minford clay in southern Ohio, and some deposits of glacial clay in the Cincinnati region of southwestern Ohio. Some glacial silts and sands are of concern if a large earthquake would strike Ohio because they are prone to liquefaction, a phenomenon in which strong shaking causes a sediment to lose its bearing strength and collapse. These glacial sediments may also magnify ground motion during an earthquake, thus making some buildings built upon them more susceptible to damage.

An intangible, but nonetheless important benefit to Ohioans from the glaciers are the scenic vistas and pastoral views throughout the state. Flat till plains stretching to the horizon, hilly moraines, and broad valleys would not be here if the glaciers had not reached Ohio.



Esker north of Circleville, Pickaway County, exposed in a sand and gravel pit. These long, snakelike ridges of sand and gravel were formed by streams of meltwater beneath the glacier. These valuable deposits of sand and gravel are used in the construction industry.

FURTHER READING

- Feldmann, R. M., and Hackathorn, Merriane, eds., 1996, Fossils of Ohio: Ohio Division of Geological Survey Bulletin 70, 577 p.
- Goldthwait, R. P., 1959, Scenes in Ohio during the last Ice Age: Ohio Journal of Science, v. 59, p. 193-216.
- _____, 1979, Ice over Ohio, in Lafferty, M. B., ed., Ohio's natural heritage: Ohio Academy of Science, p. 32-47.
- Hansen, M. C., 1995, Gold in Ohio: Ohio Division of Geological Survey GeoFacts 9, 2 p.
- _____, 1995, The Teays River: Ohio Division of Geological Survey GeoFacts 10, 2 p.
- Hough, J. L., 1958, Geology of the Great Lakes: Urbana, University of Illinois Press, 313 p.
- White, G. W., 1982, Glacial geology of northeastern Ohio (including a chapter on Pleistocene beaches and strandlines by S. M. Totten): Ohio Division of Geological Survey Bulletin 68, 75 p.



STATE OF OHIO
Ted Strickland, Governor
DEPARTMENT OF NATURAL RESOURCES
Sean D. Logan, Director
DIVISION OF GEOLOGICAL SURVEY
Larry Wickstrom, Chief

World Wide Web site: <http://www.ohiodnr.com/geosurvey/>
e-mail: geo.survey@dnr.state.oh.us

