

When it comes to  
life-changing research  
and education, you need to  
**think more than big.**

the  
**Bigger Picture**  
Annual Report 2009-10

The efforts of our  
campus community to  
grow minds, face challenges  
and innovate solutions  
can make waves  
the world over.

That's why we  
don't just focus  
on the **big picture**.

We are intent on making breakthroughs  
that impact the

# Bigger

# Picture

Annual Report 2009-10



Photo: Daniel Milner

#### To the Case Western Reserve Community:

The momentum continues. As you will see, ours is an institution of aspirations. No matter what we have achieved in the past, new challenges always await. The people of Case Western Reserve possess the intellect, creativity and talent to offer answers. What's more, they are committed to making a positive difference.

Imagine the legions that would benefit from a dynamic new space for our performing arts programs—especially when that space is The Temple – Tifereth Israel in University Circle. Milton and Tamar Maltz's \$12 million lead gift is sparking an extraordinary campaign to make the idea a reality.

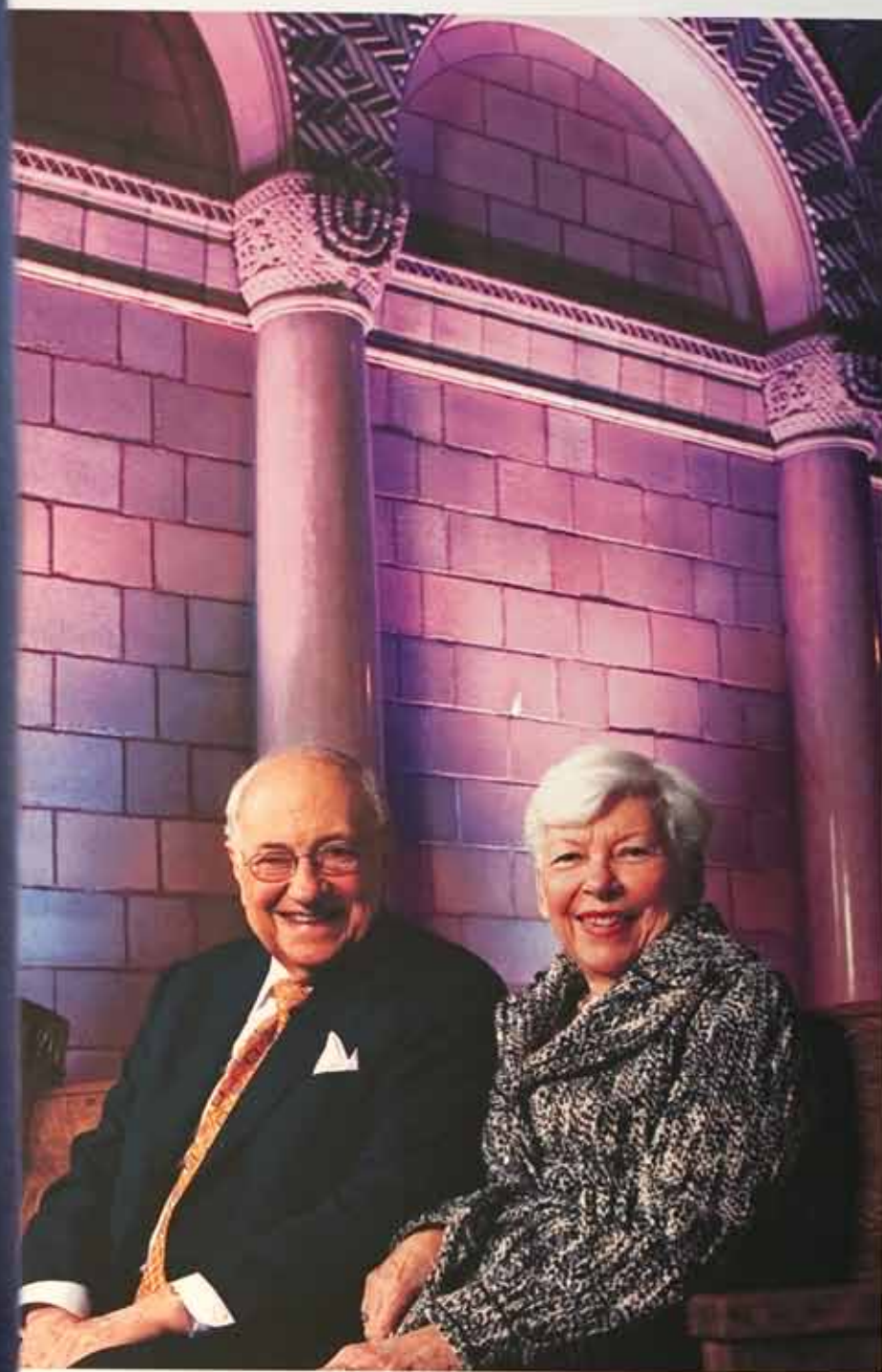
Meanwhile, faculty member Jessica Kelley-Moore is steering an effort to increase inner-city residents' access to healthy foods. Her project is one of several initiatives that not only enhances the community, but also offers lessons others can apply nationwide.

Our students demonstrate similar ingenuity and passion. The undergraduates who made a low-cost solar furnace highlight how even the simplest tools can improve the lives of people around the globe.

As impressive as these examples are, they are just a sampling. People across this campus look for the bigger picture every single day. We hope you enjoy learning about how they find it in this, our 2009-2010 annual report.

**Barbara R. Snyder**, PRESIDENT





## Preservation Takes Center Stage

The Temple – Tifereth Israel has sat as a majestic cornerstone of University Circle for more than 80 years, and has been noted on the National Register of Historic Places. Yet the maintenance needs of the 100,000-square-foot sanctuary were great for a congregation that used the space only occasionally.

Case Western Reserve University's active performing arts programs cater to more than 1,000 music, theater and dance students in any given semester, yet they lack a sizeable practice and performance space to suit their needs.

The solution? A unique partnership—catalyzed by a \$12 million gift from the Maltz Family Foundation of the Jewish Federation of Cleveland—has plans to create the **Milton and Tamar Maltz** Performing Arts Center at The Temple – Tifereth Israel. As soon as overall fundraising is complete, the university will renovate the historic space to function as a performing arts venue for Case Western Reserve students. At the same time the architecture of The Temple will be preserved to keep it useable and available to the congregation for worship on high holy days and other significant occasions. Watch this innovative story of collaboration—and see how the partnership could serve as a national model for historic preservation—at [case.edu/biggerpicture](https://case.edu/biggerpicture).



## Good Food for All

Fast-food burgers and fries. Chips and cola from the corner store. A candy bar from a vending machine. For the homes and schools of inner-city neighborhoods, these are typical food offerings.

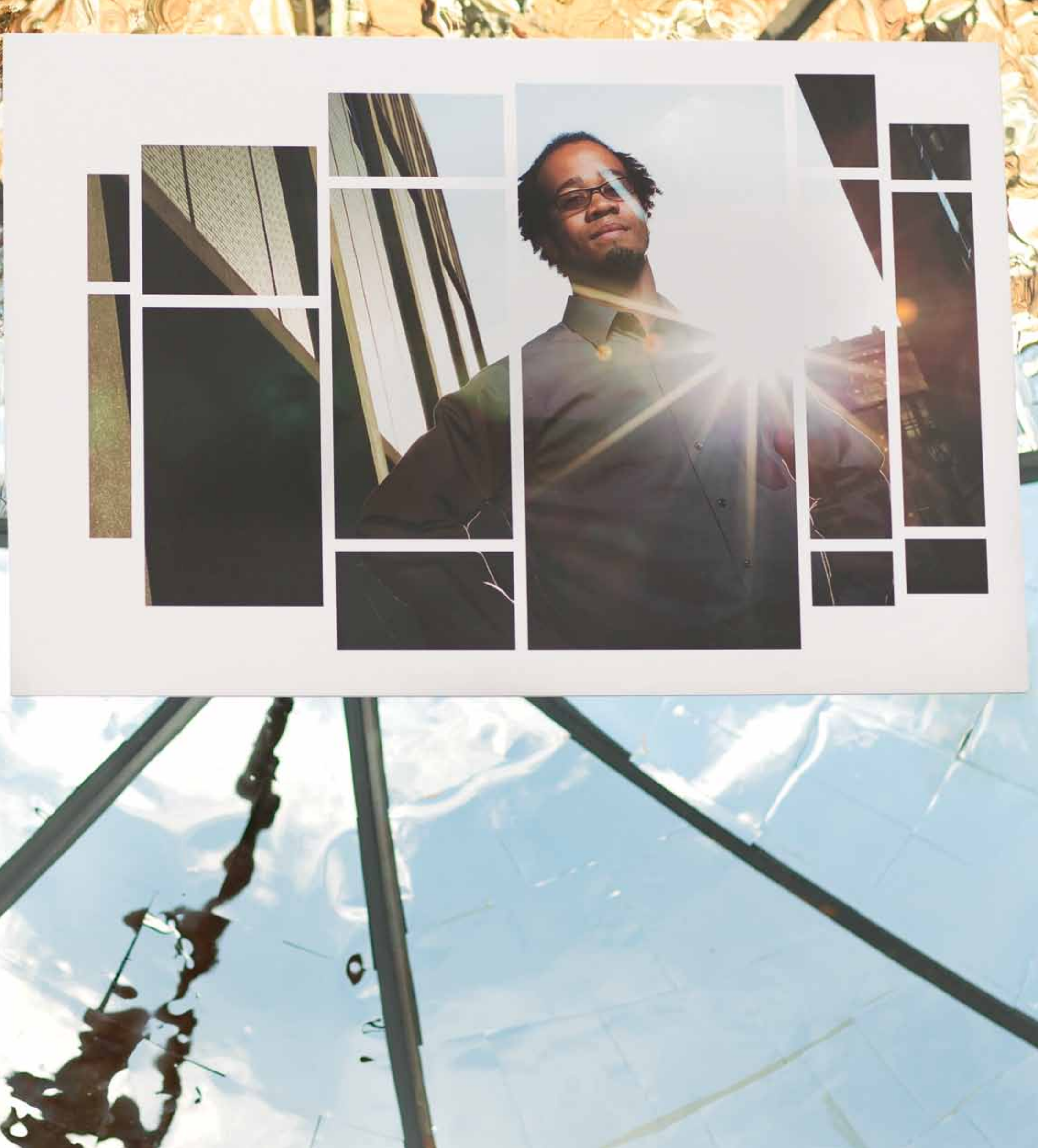
But what if the local corner store sold fresh fruits and vegetables? What if a neighborhood garden grew them? What if nutritional experts and researchers worked with local communities to address their food needs and developed personalized solutions for healthy food access and education? That's the goal of the core project of the new Prevention Research Center for Healthy Neighborhoods at Case Western Reserve. A team led by **sociology associate professor Jessica Kelley-Moore** is engaging community residents in an effort to address the healthy food shortages of inner-city neighborhoods. Watch how they are changing the entire food landscape in these areas at [case.edu/biggerpicture](https://case.edu/biggerpicture).



## Heat for Cheap

Old satellite dish purchased off Craigslist? Check. Seventy-five feet of aluminum-coated Mylar? Check. Four aerospace and mechanical engineering students determined to make the first inexpensive solar furnace? Check.

With the right supplies on hand, **engineering student Robert Abban** and fellow classmates Jesse Lee, Chris Lau and Jason Presutti were able to meet their goal for their senior capstone project. Their 10-foot-wide solar-furnace prototype was able to reach a high temperature of 626 degrees Celsius (1,158 F)—even in Cleveland springtime—inside the brick solar furnace suspended at the center of the parabolic dish, where sunlight is reflected and concentrated. Watch how their cost-efficient and environmentally friendly technology could serve as a stove, a water purifier or even an electrical generator in developing countries at [case.edu/biggerpicture](https://case.edu/biggerpicture).





## Finding Oral Cancer Fast

A minor, unassuming lesion on the inside of your mouth. Odds are, it's nothing. But in a small percentage of cases, it's the beginning stages of oral cancer—the time when treatment would lead to the most successful results. But to make the diagnosis, a biopsy is necessary—an invasive and costly procedure that isn't currently a practical response in these cases.

But a research team led by **biological sciences assistant professor Ge Jin** has discovered that a naturally occurring protein—human beta defensin-3—could serve as a red flag for this early stage of oral cancer. Watch how the presence of the protein—detected from the simple swipe of a cotton swab during a routine visit to your dentist's office—could lead to life-saving treatment at [case.edu/biggerpicture](https://case.edu/biggerpicture).





## Save a Little, Help a Lot

Many American kids get a piggy bank before their first birthdays. The notion of saving money—and having a secure place like a bank in which to do so—can easily be taken for granted in our society.

Yet for villagers in the South Asian country of Nepal, the idea of a bank holding onto their money was one almost entirely foreign. So when **economics assistant professor**

**Silvia Prina** was approached to help introduce financial assistance programs for Nepali villagers, she first assessed their needs and then started simply: with a unique savings program that efficiently brought the bank to the villages. Watch her story to see how the savings program took off—and how it could be a model for programs in other developing countries—at [case.edu/biggerpicture](https://case.edu/biggerpicture).





## An Essential Addition to Police Officers' Tool Belts

The patrol officers of the Cuyahoga Metropolitan Housing Authority (CMHA) Police Department are prepared to respond immediately to any potential criminal activity within the housing estates. What they frequently find on calls that bring them into homes, however, is not criminal activity, but families in potential need of social-service help.

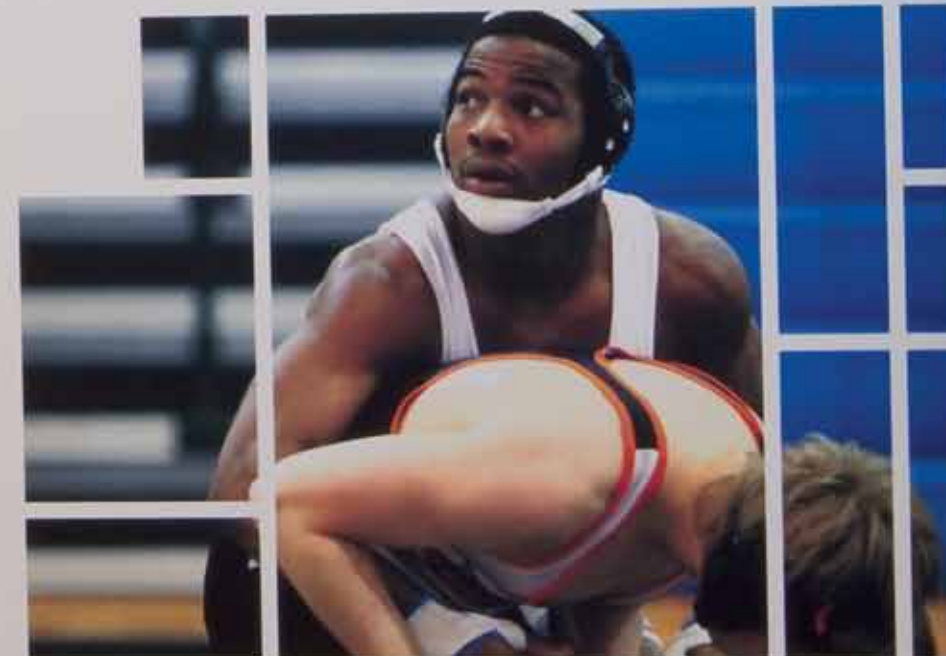
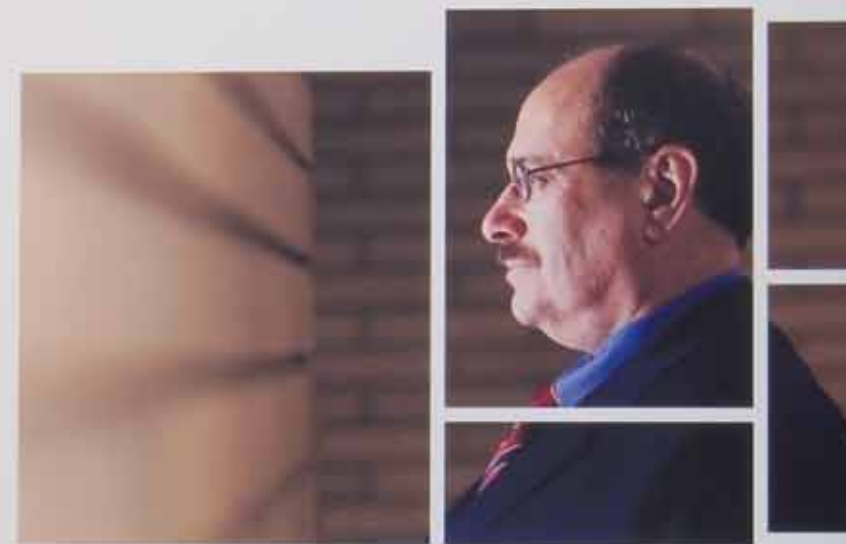
Partnering with **social-work professor Mark Singer** and Mental Health Services, the CMHA police developed a needed tool to use in these instances. Their Police Assisted Referral Program provides officers with the ability to refer children and families to Mental Health Services for education, screening and treatment. Watch how the program provides officers with a much-needed option other than arrest or walk away—and learn how the program could assist police departments nationwide—at [case.edu/biggerpicture](https://case.edu/biggerpicture).





## More of the Bigger Picture

A new center, led by **Shirley Moore** (top left), promotes inclusion of people with all abilities in research. The country's oldest health-law program, directed by **Maxwell Mehlman** (top right), addresses the tricky intersections of medicine and the law in the 21st century. A national wrestling champion, **Isaac Dukes** (bottom right), won his title while on the mend from a serious injury. A start-up company, founded by Case Western Reserve graduates **Eric Neuman, Marc Plotkin and John Knific** (bottom left), takes the music-school audition process to cyberspace. See these stories—and even more of the bigger picture—at [case.edu/biggerpicture](http://case.edu/biggerpicture).





# Financial and Statistical Highlights

## Operations\*

Total operating surplus	\$2.2 million
Total operating revenue	\$903.8 million
Total operating expense	\$903.4 million
Endowment funds (market value, June 30, 2010)	\$1,519 million
Gifts and pledges from private sources	\$115.5 million

## Research

Sponsored research and training revenue	\$385.7 million
---	-----------------

## Technology Transfer

Total licenses (to date)	250
Total licensing revenues	\$14.3 million

## Degrees Awarded

Undergraduate	978
Masters	989
PhDs	211
Other Doctorates (JD, MD, DMD, DNP, DMgt)	570

## Degrees by School (Undergraduate and Graduate)

Case School of Engineering	476
College of Arts and Sciences	678
Frances Payne Bolton School of Nursing	228
Mandel School of Applied Social Sciences	139
School of Dental Medicine	86
School of Law	275
School of Medicine	390
Weatherhead School of Management	476

## Enrollment (Fall 2010)

Undergraduate	4,227
Graduate and Professional	5,610
States represented	50
Countries represented	92

## Campus

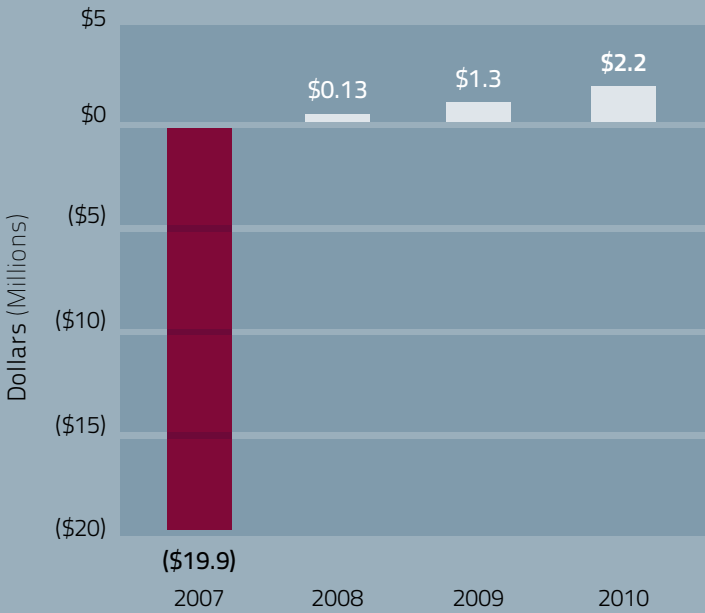
Faculty (full-time)	2,745
Staff (full-time and part-time)	3,217
Campus Size	155 acres

## Alumni

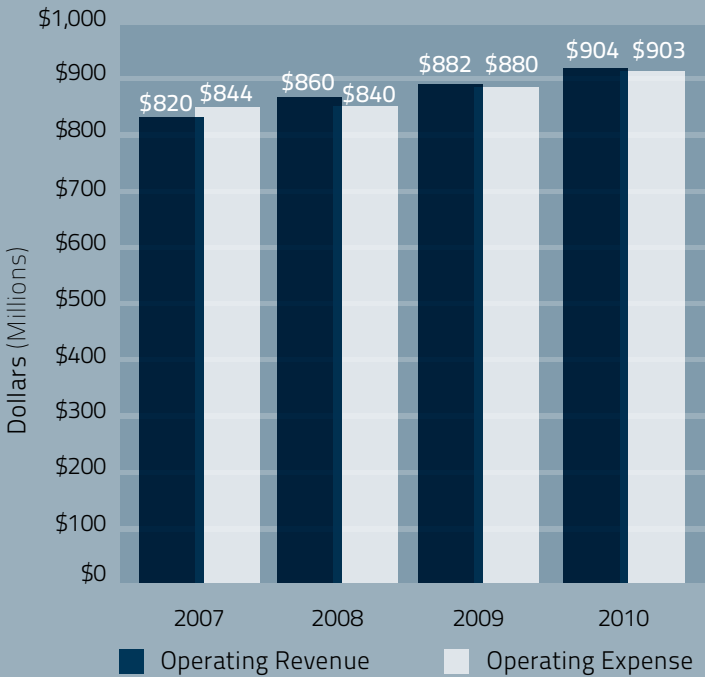
Total Alumni	107,150
Nobel Laureates	15

\* Revenue, expense and operating surplus (deficit) figures per *Statement of Operations* (unaudited)  
Endowment funds figure per university financial statements  
Gifts and pledges figure per internal accounting (unaudited)  
All figures rounded

Total operating surplus (deficit)  
Fiscal years 2007-2010



Total operating revenues and expenses  
Fiscal years 2007-2010



Gifts and Pledges from Private Sources  
Fiscal years 2007-2010



All figures rounded



# University Administration

as of Jan. 1, 2011

Barbara R. Snyder  
President

William A. Baeslack III  
Provost and Executive  
Vice President

Christine Ash  
Vice President, University Planning

David Bell  
Vice President, Government Relations

Richard W. Bischoff  
Vice President,  
Enrollment Management

Robert Clarke Brown  
Treasurer

Stephen M. Campbell  
Vice President, Campus Planning  
and Facilities Management

Mark E. Coticchia  
Vice President, Economic  
Development, Industrial Research  
and Technology Management

Pamela B. Davis  
Dean, School of Medicine, and Vice  
President, Medical Affairs

Donald L. Feke  
Vice Provost,  
Undergraduate Education

David Fleshler  
Associate Provost,  
International Affairs

Grover C. Gilmore  
Dean, Mandel School of Applied  
Social Sciences

Jerold S. Goldberg  
Dean, School of Dental Medicine

Lev S. Gonick  
Vice President, Information  
Technology Services, and Chief  
Information Officer

Carolyn Gregory  
Vice President, Human Resources

Richard J. Jamieson  
Vice President, Campus Services

Lara A. Kalafatis  
Vice President, University Relations

Bruce A. Loessin  
Senior Vice President, University  
Relations and Development

Marilyn Sanders Mobley  
Vice President, Inclusion,  
Diversity and Equal Opportunity

Glenn Nicholls  
Vice President, Student Affairs

Robert H. Rawson Jr.  
Interim Dean, School of Law

Mohan Reddy  
Dean, Weatherhead School  
of Management

Charles Rozek  
Dean, School of Graduate Studies

Chris Sheridan  
Chief of Staff to the President

John F. Sideras  
Senior Vice President, Finance,  
and Chief Financial Officer

Lynn T. Singer  
Deputy Provost and Vice President,  
Academic Programs

Sally J. Staley  
Chief Investment Officer

Cyrus C. Taylor  
Dean, College of Arts and Sciences

Norman Tien  
Dean, Case School of Engineering

Colleen Trembl  
Interim General Counsel

John D. Wheeler  
Senior Vice President,  
Administration

Jeffrey Wolcowitz  
Dean, Undergraduate Studies

May L. Wykle  
Dean, Frances Payne Bolton  
School of Nursing

# University Trustees

as of Jan. 1, 2011

Charles "Bud" J. Koch  
Chair of the Board

Virginia N. Barbato

James L. Bildner

Linda Burnes Bolton

William E. Bruner II

Timothy J. Callahan

John P. Campi

Antony E. Champ

Kenneth B. Chance

Michael G. Cherkasky

Archie G. Co

David A. Daberko

James C. Diggs

Thalia Dorwick

Ronald I. Dozoretz

Gregory L. Eastwood

Charles D. Fowler

Susie Gharib

Joie A. Gregor

Sally Gries

Charles E. Hallberg

Daniel P. Harrington

Peter S. Hellman

W. Nicholas Howley

David P. Hunt

Jennie S. Hwang

Samir N. Jadallah

Mary Ann Jorgenson

Hemant Kanakia

Joseph P. Keithley

Caroline Kovac

Frank Linsalata

George L. Majoros Jr.

Joseph M. Mandato

Thomas F. McKee

Brian J. Ratner

Joseph B. Richey

Joseph A. Sabatini

Theodore L. Schroeder

Alan L. Schwartz

Lawrence M. Sears

Barbara R. Snyder, *ex officio*

Andrew Wasynczuk

Scott A. Wolstein

James C. Wyant

For a listing of the most current trustees, including emeriti, please visit [case.edu/bot](http://case.edu/bot).



the  
**Bigger**

# Picture

comes to life online.

Watch now at

[case.edu/biggerpicture](http://case.edu/biggerpicture)

## Case Western Reserve University Annual Report 2009-10

Editor

**Christine Coolick**

Print Designer

**Lori Scheid**

Web Developer

**Eric Vazquez**

Video Producer

**Mary Gerity**

Cinematography and Video Editing

**MediaVision and Commercial  
Recording Studios**

Principal Portrait Photographer

**Russell Lee**  
Portrait, pg. 2: **Tony Gray**

Environment  
Photographer

**Laura Webb**

© 2011 Case Western Reserve University

Case Western Reserve University admits students of any race, religion, age, sex, color, disability, sexual orientation and national or ethnic origin to all the rights and privileges, programs and activities generally accorded or made available to students at the university. It does not discriminate on the basis of race, religion, age, sex, color, disability, sexual orientation or national or ethnic origin in administering its educational policies, admission policies, employment, promotion or compensation policies, scholarship and loan programs, and athletic or other university-administered programs.

UMC308\_2010



10900 Euclid Avenue  
Cleveland, Ohio 44106-7017

