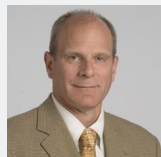
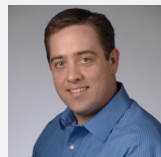


# New Members- Molecular Oncology



## **Thomas McIntyre, PhD**

Professor, Cellular and Molecular Medicine, CC  
*inflammation, oxidative stress, lipid signaling*



## **Jason Mears, PhD**

Assistant Professor, Pharmacology, CWRU  
*apoptosis, mitochondrial redistribution and function, cryo EM*

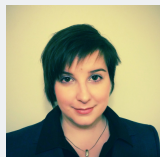


## **Quintin Pan, PhD \***

Professor, Otolaryngology, UH  
*head & neck malignancies; drug development*

**[\* New to institution]**

# New Members- GU Malignancies



## **Magdalena Grabowska, PhD**

Assistant Professor, Urology, CWRU

*prostate cancer, transcription regulation, androgen-independent pathways*



## **Ann Harris, PhD\***

Professor, Genetics & Genome Sciences, CWRU

*transcription regulation, GWAS studies, genetics*



## **Byron Lee, MD, PhD**

Assistant Professor, Urology, CC

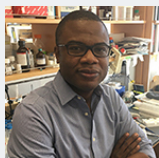
*bladder cancer, chromatin modifier mutations*



## **Prateek Mendiratta, MD\***

Assistant Professor, Hematology/Oncology, UH

*GU malignancies; clinical trials enrollment*



## **Stanley Adoro, PhD\***

Assistant Professor, Pathology, CWRU

*blood cell development, proteostasis, HSC differentiation and myeloid leukemogenesis*



## **Jignesh Dalal, MD**

Professor, Pediatrics, UH

*BMT, AYA*



## **Brian Hobbs, PhD\***

Associate Professor, Biostatistics, CC

*statistical modeling, breast cancer, personalized medicine*



## **Stanley Huang, PhD\***

Assistant Professor, Pathology, CWRU

*tumor associated macrophages, immunometabolism, inflammation*



## **Rafik-Pierre Sekaly, PhD**

Professor, Pathology, CWRU

*immunotherapy, AYA, vaccine development*



## **Lewis Shi, MD, PhD\***

Assistant Professor, Experimental Pathology, CWRU

*immunotherapy, immune signaling, metabolism, autoimmunity*



## **Lilyana Angelov, MD**

Professor, Neurological Surgery, CC

*brain tumor, surgical treatments, stereotactic radiosurgery*



## **Brian Grimberg, PhD**

Director, Cytometry & Imaging Microscopy SR, Case CCC

Assistant Professor, Pathology, CWRU

*drug development, confocal microscopy, flow cytometry, global studies (malaria, zika)*



## **Deepa Jagadeesh, MD**

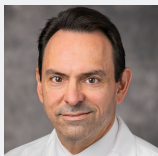
Assistant Professor, Hematology and Medical Oncology, CC

*lymphoma, leukemia, BMT*



## **Ahmad Tarhini, MD, PhD**

Professor, Hematology and Medical Oncology, CC  
*immunotherapy, immunology, drug development, melanoma*



## **Theodoros N. Teknos, MD\***

Deputy Director for University Hospitals, Case CCC  
Professor, Otolaryngology, UH  
*head and neck cancer, recurrent and metastatic disease*

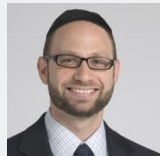
# New Members- Cancer Imaging



## **Chaitra Badve, MD**

Assistant Professor, Radiology, UH

*brain tumor, diagnostic imaging, biomarkers*



## **Shlomo Koyfman, MD**

Associate Professor, Radiation Oncology, CC

*radiation oncology, lymphoma, head and neck cancer*

# New Members- Cancer Prevention, Control & Population Research



## **Chao-Pin Hsiao, PhD, RN**

Assistant Professor, Nursing, CWRU

*molecular-genetics mechanism of cancer-related fatigue, stress responses, mitochondrial bioenergetics*



## **Karen Hurley, PhD**

Assistant Professor, Medicine, CC

*clinical psychology, hereditary cancer risk, cancer prevention*



## **Seth J. Rotz, MD\***

Associate Staff, Pediatric Hematology Oncology, CC

*AYA, BMT, surgical treatments*



# NEW Shared Resource Equipment

## Genomics

- NovaSeq 6000 Sequencing System

## Cytometry

- Microparticle Sorting for the Study of New Immunotherapies

## Proteomics

- Orbitrap Fusion Lumos Tribrid Mass Spectrometer
- High-End Instrumentation (HEI) Grant Program

## Imaging

- Upgrade to 9.4T Bruker Biospec MRI Scanner
- ACUSON S2000 Ultrasound System
- 9.4T preclinical MRI upgrade

## Drug Development

- 50,000 Molecule Drug Compound Library
- Biotek EL406 Plate Washer/Dispenser

## Hematopoietic and Cellular Therapy

- HEMAVET 950FS Multi Species Hematology System



CASE  
COMPREHENSIVE  
CANCER CENTER

# Recognition



CASE  
COMPREHENSIVE  
CANCER CENTER

**30** Years of Collaboration

# EXCEPTIONAL!