



HEALTH SCIENCES LITERATURE

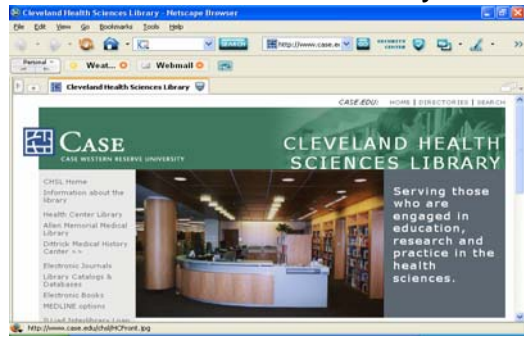
Developmental and Evolutionary Biology

CASE WESTERN RESERVE UNIVERSITY

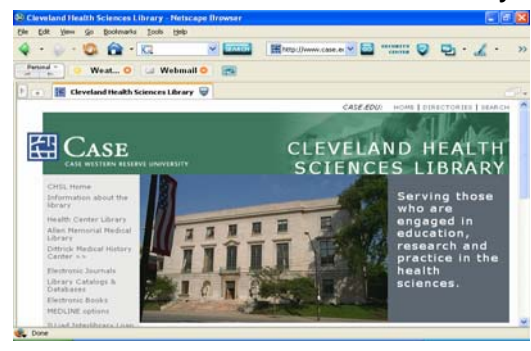
Cleveland Health Sciences Library

- Two Locations:
 - [Health Center Library](#)
 - [Allen Memorial Medical Library](#)

Health Center Library



Allen Memorial Medical Library



Journal Information

- Journals or Serials or Periodicals or Magazines publish current information on a regular basis.
- Sometimes these publications are print.
- Sometimes these publications are electronic.
- Sometimes these publications are both electronic and print.

Journals

- Not every journal is available electronically.
- CWRU does not have access to every journal that is available electronically.
- CHSL has links to [Electronic Journals](#).
 - (<http://www.case.edu/chsl/ejournal.htm>)

Electronic Journals



Case's A to Z List



How do you find current articles?

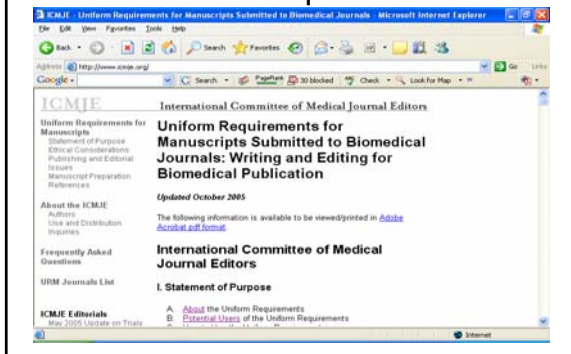
- Most peer-reviewed journals are indexed by databases.

What is a peer-reviewed journal?

- "A peer-reviewed journal is one that submits most of its published research articles for outside review."
- This quote is from the

[ICMJE - Uniform Requirements for Manuscripts Submitted to Biomedical Journals](http://www.icmje.org/) (<http://www.icmje.org/>)

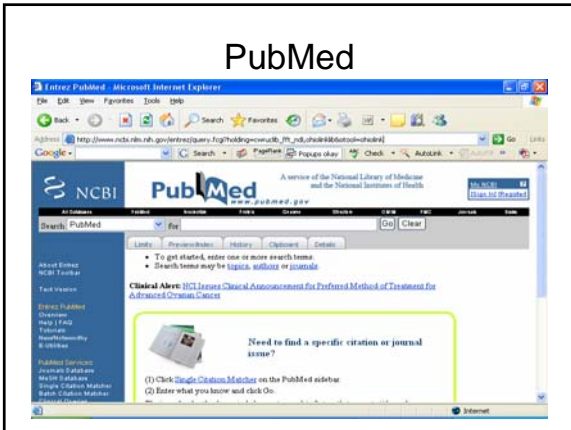
Uniform Requirements



What is a database?

- Databases are collections of data organized for rapid search and retrieval by a computer. In libraries they are primarily bibliographic in nature, indexing journals, meetings and sometimes books. An example of a database is [PubMed](http://www.ncbi.nlm.nih.gov/entrez/query.fcgi?holding=cwruclib_fft_ndi,ohiolinklib&otool=ohiolink). (http://www.ncbi.nlm.nih.gov/entrez/query.fcgi?holding=cwruclib_fft_ndi,ohiolinklib&otool=ohiolink)

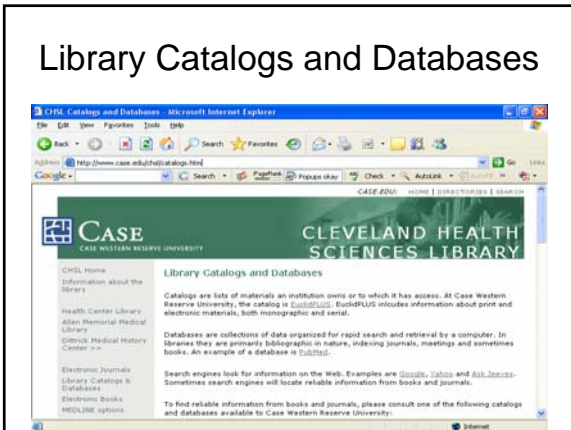
PubMed



Searching the literature

- CHSL provides some links to [Library Catalogs and Databases](#).
- (<http://www.case.edu/chsl/catalogs.htm>)

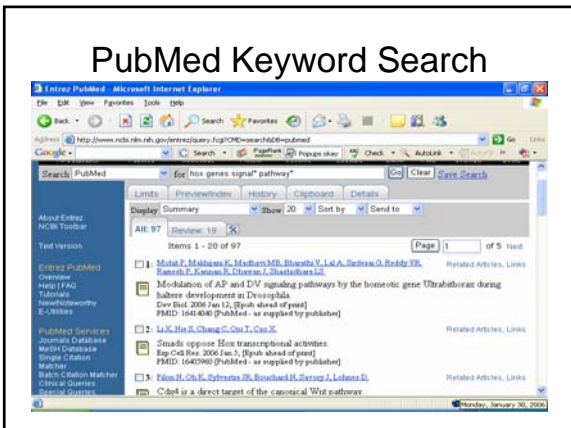
Library Catalogs and Databases



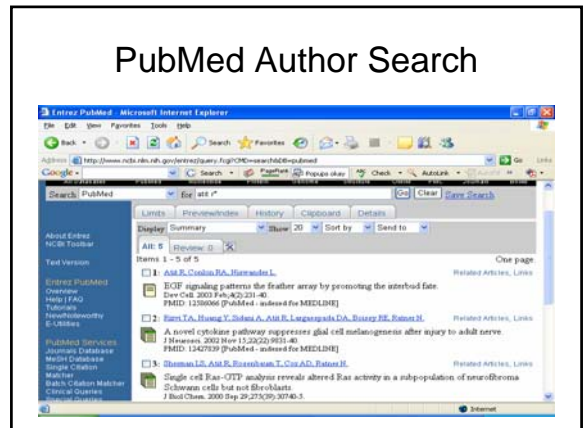
PubMed

- is the NLM's premier bibliographic database covering the fields of medicine, nursing, dentistry, veterinary medicine, the health care system, and the preclinical sciences. MEDLINE contains bibliographic citations and author abstracts from more than 4,800 biomedical journals published in the United States and 70 other countries. The database contains over 16 million citations dating back to the 1950's. Coverage is worldwide, but most records are from English-language sources or have English abstracts.

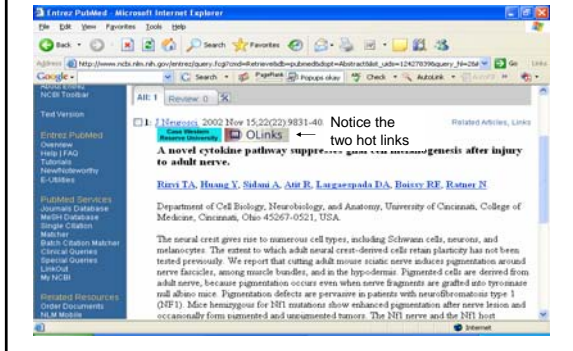
PubMed Keyword Search



PubMed Author Search



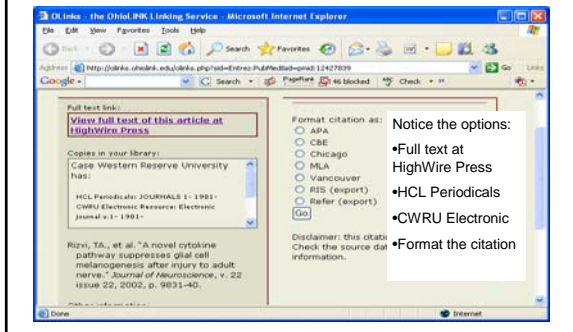
PubMed Abstract Display



CWRU Hotlink



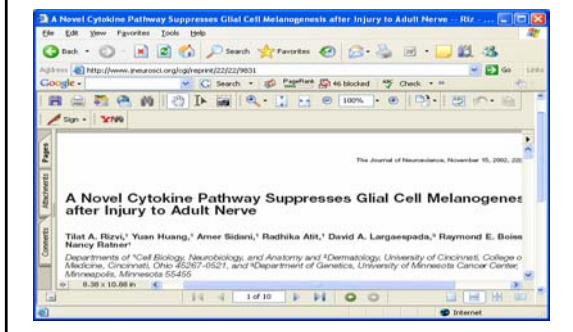
OLINKS



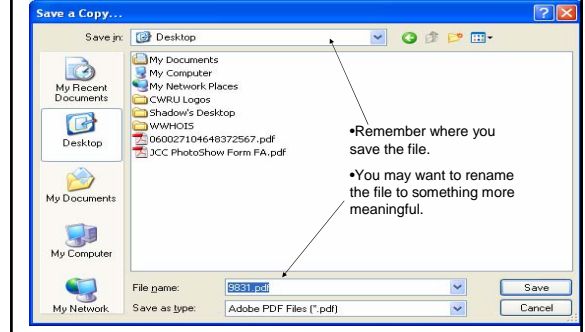
Article Citation from OLINKS



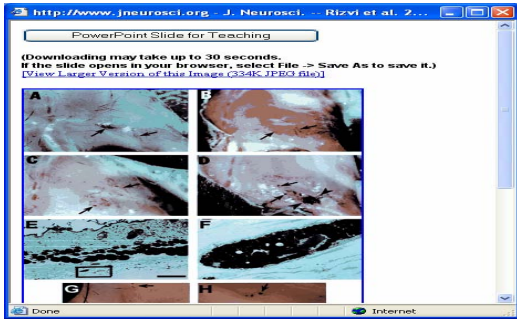
The Electronic Article



Saving the .pdf



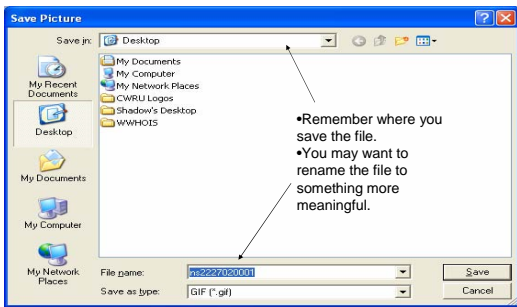
Using images from html



More on images

- Some html article allow you to immediately make a PowerPoint slide.
- You can always right click an image to save it.

Saved images



Other Databases – [Health Sciences at Case](#)



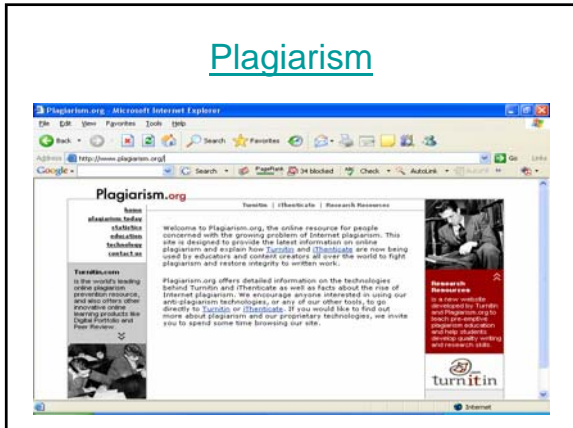
Copyright and Plagiarism

- [Copyright Links](#) from KSL
 - (http://library.case.edu/ksl/services/reserves/copy_links.html)
- [Plagiarism.org](#)
 - (<http://www.plagiarism.org/>)

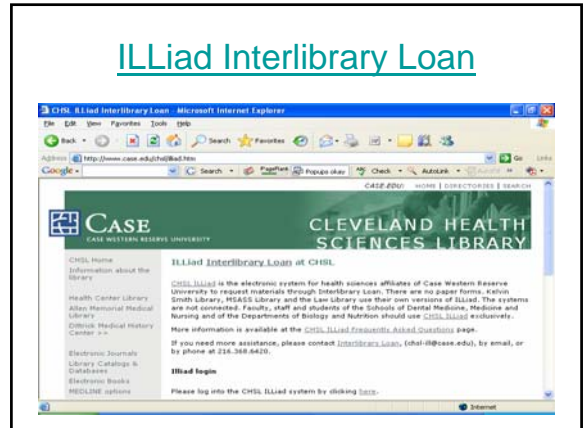
[KSL's Copyright Information](#)



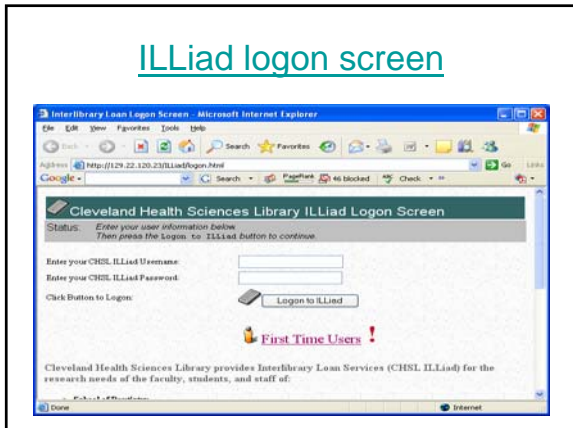
Plagiarism



ILLiad Interlibrary Loan



ILLiad logon screen



Cleveland Health Sciences Library

- [Reference Department](http://www.case.edu/chsl/ref.htm)
- [Library Hours](http://www.case.edu/chsl/hours.htm)
- [Library Staff](http://www.case.edu/chsl/staff.htm)

CASE WESTERN RESERVE UNIVERSITY