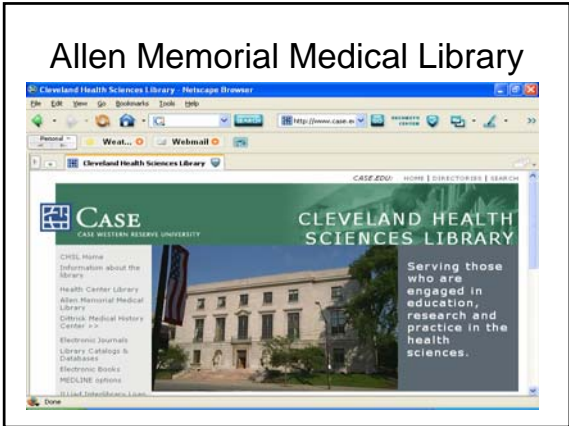
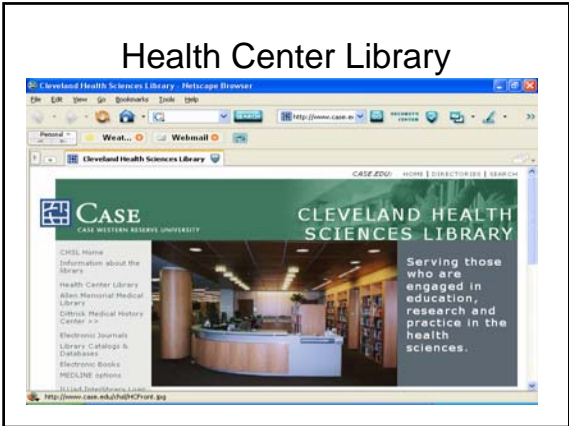


- ## Cleveland Health Sciences Library
- Two Locations:
 - [Health Center Library](#)
 - [Allen Memorial Medical Library](#)



- ## What do you need to begin?
- Topic
 - Access to information

- ## Access to Information
- Computer
 - Internet connection
 - Hardwired
 - Wireless
 - VPN
 - Web Browser

Web Browser

- An interactive program (client) that requests, retrieves, and displays pages from the World Wide Web.
 - Access Science, McGraw-Hill Encyclopedia of Science and Technology Online [database on the internet]. The McGraw-Hill Companies [cited 9 January 2006]. Available from <http://www.accessscience.com/server-java/Arknoide/science/AS>

Browsing the web

- Search engines
- Catalogs
- Databases

Search Engine

- Any software that locates and retrieves information in a database.
 - Access Science, McGraw-Hill Encyclopedia of Science and Technology Online [database on the internet]. The McGraw-Hill Companies [cited 9 January 2006]. Available from <http://www.accessscience.com/server-java/Arknoide/science/AS>

Catalog

- A list of items in a data storage device, usually arranged so that a particular kind of information can be located easily.
 - Access Science, McGraw-Hill Encyclopedia of Science and Technology Online [database on the internet]. The McGraw-Hill Companies [cited 9 January 2006]. Available from <http://www.accessscience.com/server-java/Arknoide/science/AS>

Database

- A nonredundant collection of interrelated data items that can be shared and used by several different subsystems.
 - Access Science, McGraw-Hill Encyclopedia of Science and Technology Online [database on the internet]. The McGraw-Hill Companies [cited 9 January 2006]. Available from <http://www.accessscience.com/server-java/Arknoide/science/AS>
- More on this later!

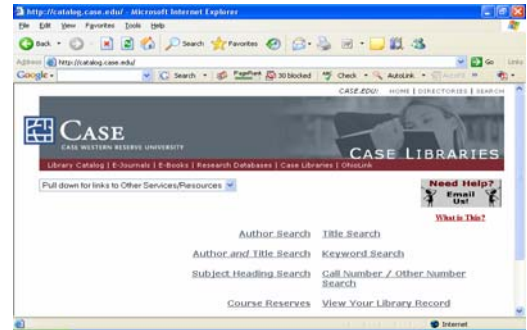
Where do you begin?

- Define your topic
 - Use a dictionary or a textbook
- Find in-depth information from books
- Find current information from journal articles
- Look for other information

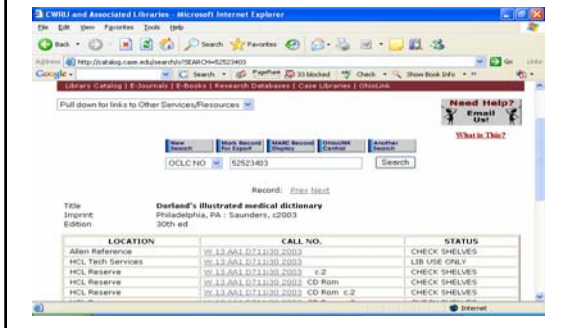
How do you find a dictionary?

- Look in a catalog
 - At CWRU, the catalog is [EuclidPLUS](http://catalog.case.edu/)
 - (<http://catalog.case.edu/>)
- Look in an online resource
 - CHSL has links to [Electronic Books](http://www.case.edu/chsl/ebook.htm)
 - (<http://www.case.edu/chsl/ebook.htm>)
- Buy a dictionary

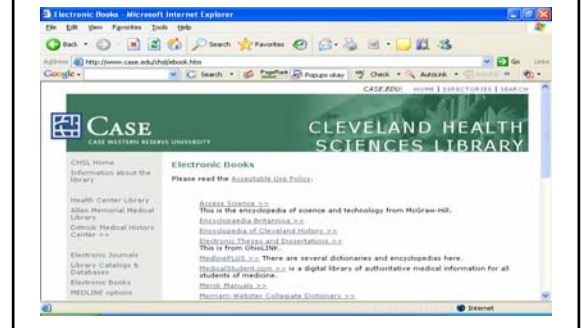
EuclidPLUS



Medical Dictionary



Electronic Books



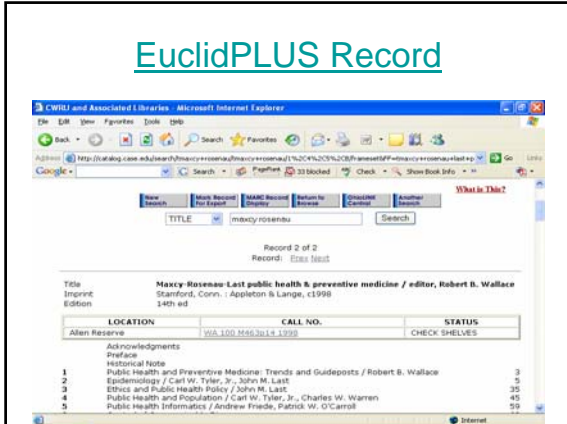
Medical Dictionary at MedlinePlus



How do you find a textbook?

- Look in a catalog
 - At CWRU, the catalog is [EuclidPLUS](http://catalog.case.edu/)
 - (<http://catalog.case.edu/>)
- Look in an online resource
 - CHSL has links to [Electronic Books](http://www.case.edu/chsl/ebook.htm)
 - (<http://www.case.edu/chsl/ebook.htm>)
- Buy a textbook

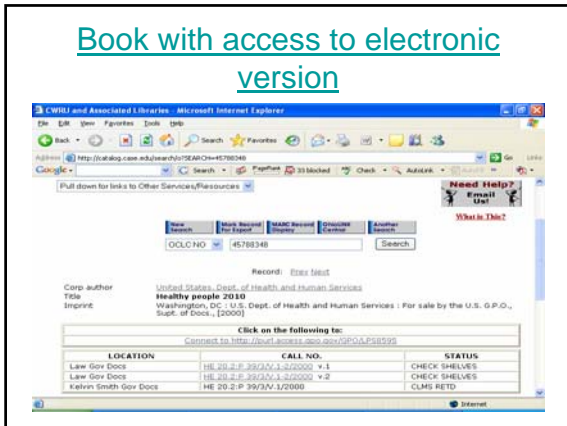
EuclidPLUS Record



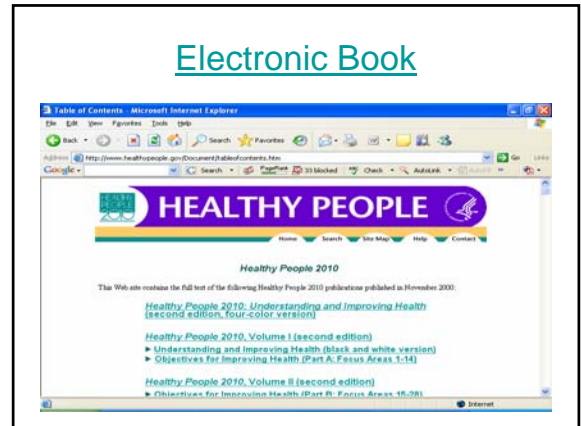
How do you find other books?

- Look in a catalog
 - At CWRU, the catalog is [EuclidPLUS](http://catalog.case.edu) ([-http://catalog.case.edu](http://catalog.case.edu))
- Look in an online resource
 - CHSL has links to [Electronic Books](http://www.case.edu/chsl/ebook.htm) ([-\(http://www.case.edu/chsl/ebook.htm\)](http://www.case.edu/chsl/ebook.htm))
- Buy some books

Book with access to electronic version



Electronic Book



Books!

- Not every book is electronically available!
- There will be times when you will actually be compelled to read a book – not necessarily cover-to-cover, but enough to find the information you need.

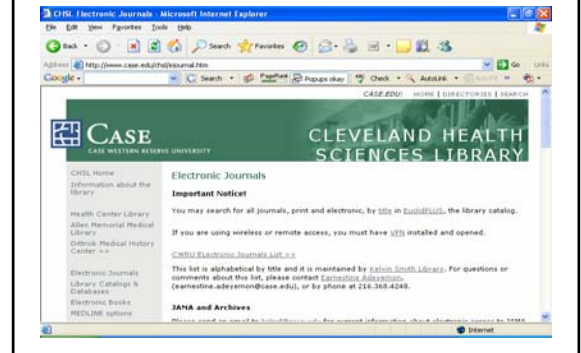
Journal Information

- Journals or Serials or Periodicals or Magazines publish current information on a regular basis.
- Sometimes these publications are print.
- Sometimes these publications are electronic.
- Sometimes these publications are both electronic and print.

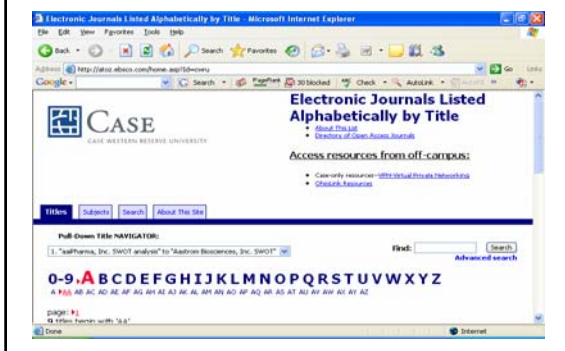
Journals

- Not every journal is available electronically.
- CWRU does not have access to every journal that is available electronically.
- CHSL has links to [Electronic Journals](#).
– (<http://www.case.edu/chsl/ejournal.htm>)

Electronic Journals



Case's A to Z List



How do you find current articles?

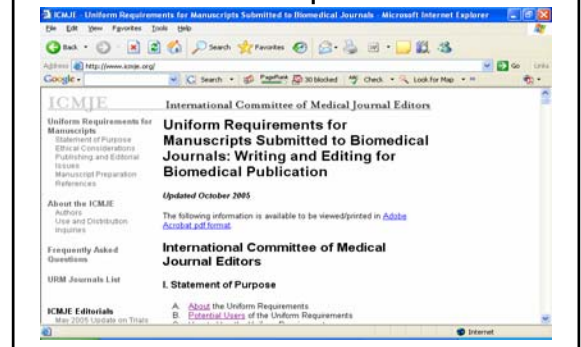
- Most peer-reviewed journals are indexed by databases.

What is a peer-reviewed journal?

- “A peer-reviewed journal is one that submits most of its published research articles for outside review.”
- This quote is from the

[ICMJE - Uniform Requirements for Manuscripts Submitted to Biomedical Journals](http://www.icmje.org/) (<http://www.icmje.org/>)

Uniform Requirements



What is a database?

- Databases are collections of data organized for rapid search and retrieval by a computer. In libraries they are primarily bibliographic in nature, indexing journals, meetings and sometimes books. An example of a database is [PubMed](http://www.ncbi.nlm.nih.gov/entrez/query.fcgi?holding=cwrucliib_ff_t_ndi,ohiolinklib&otool=ohiolink). (http://www.ncbi.nlm.nih.gov/entrez/query.fcgi?holding=cwrucliib_ff_t_ndi,ohiolinklib&otool=ohiolink)

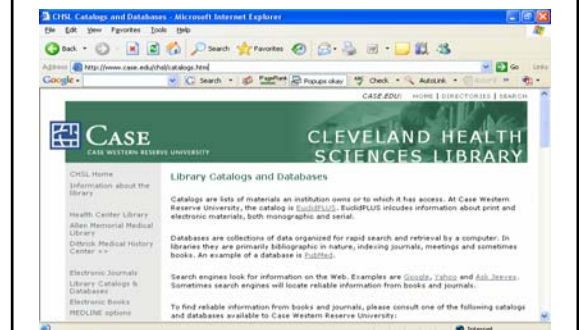
PubMed



Searching the literature

- CHSL provides some links to [Library Catalogs and Databases](http://www.case.edu/chsl/catalogs.htm). – (<http://www.case.edu/chsl/catalogs.htm>)

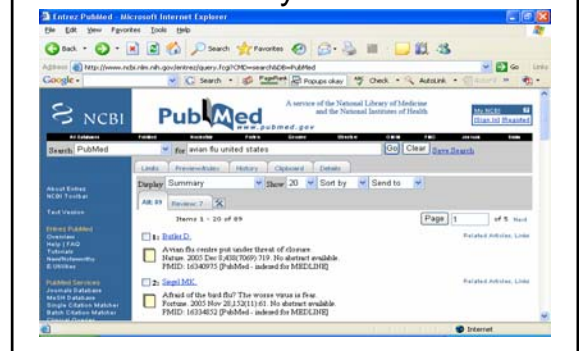
Library Catalogs and Databases



PubMed

- is the NLM's premier bibliographic database covering the fields of medicine, nursing, dentistry, veterinary medicine, the health care system, and the preclinical sciences. MEDLINE contains bibliographic citations and author abstracts from more than 4,800 biomedical journals published in the United States and 70 other countries. The database contains over 16 million citations dating back to the 1950's. Coverage is worldwide, but most records are from English-language sources or have English abstracts.

PubMed Keyword Search



PubMed Author Search

A screenshot of a Microsoft Internet Explorer browser displaying the PubMed website. The search results for the author 'Li, M.' are shown, listing several publications. The first result is 'Dual regulation of AP-2alpha transcriptional activation by poly(ADP-ribose) polymerase-1' published in *Biochem J* in 2004. The interface includes navigation tabs like 'Links', 'Abstracts', and 'Full Text', and a search bar at the top.

PubMed Abstract Display

A screenshot of the PubMed Abstract Display page for the article 'Dual regulation of AP-2alpha transcriptional activation by poly(ADP-ribose) polymerase-1'. The abstract text is visible, and a red box highlights the 'OLINKS' link. An arrow points to this link with the text 'Notice the two hotlinks.' The page also shows the authors' names and affiliations.

CWRU Hotlink

A screenshot of the Biochemical Journal website. The article 'Dual regulation of AP-2alpha transcriptional activation by poly(ADP-ribose) polymerase-1' is featured. A prominent text overlay states 'This is FREE full text.' The website header includes the journal's name and navigation links like 'Home', 'Current Issue', and 'Editorial board'.

OLINKS

A screenshot of the OLINKS service interface. It displays the article title and provides options for viewing the full text and formatting citations. A red box highlights the 'View full text of this article at Portland Press' link. A list of citation styles is shown, including APA, CBE, Chicago, MLA, Vancouver, RIS, and Refer. A note says 'Notice all the options: Full text at Portland Press, HCL Periodicals, CWRU Electronic Resources, Format Citation'.

Another example -Olinks

A screenshot of the OLINKS service interface for a different article. It shows the 'View full text of this article at Cleveland Clinic Educational Foundation (.PDF)' link. The citation format options are the same as in the previous screenshot, including APA, CBE, Chicago, MLA, Vancouver, RIS, and Refer.

Article Citation from OLINKS

A screenshot of the OLINKS Citation Formatter. It displays the final formatted citation in APA style: 'Mossad, S (2005) Influenza 2005-2006: vaccine supplies adequate, but hard to locate. *Cleveland Clinic journal of medicine*, 72(11), 1941-7.' The interface includes instructions on how to use the citation and a disclaimer.

Link to Full-Text



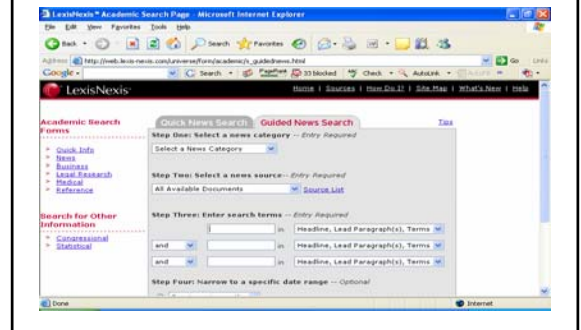
The Electronic Article



Other Databases – Health Sciences at Case

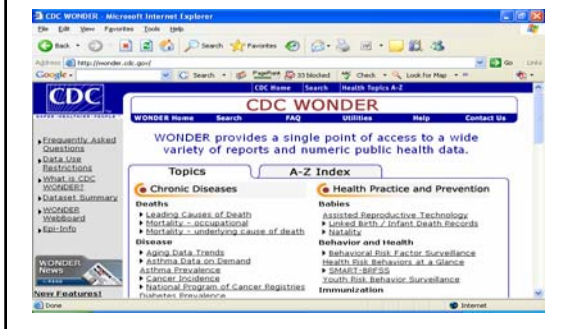


LexisNexis Academic



CDC Wonder

<http://wonder.cdc.gov/>



Find Other Information

- [MedlinePlus Health Information from the National Library of Medicine](http://www.nlm.nih.gov/medlineplus/) – (<http://www.nlm.nih.gov/medlineplus/>)
- [Centers for Disease Control and Prevention](http://www.cdc.gov/) (<http://www.cdc.gov/>)
- [Cleveland Department of Public Health](http://www.clevelandhealth.org/) – (<http://www.clevelandhealth.org/>)

MedlinePlus



Centers for Disease Control



City of Cleveland - Department of Public Health



More Information...

- [Ohio Department of Health](http://www.odh.ohio.gov/)
- [World Health Organization](http://www.who.int/en/)
- [Faststats A to Z](http://www.cdc.gov/nchs/fastats/Default.htm)
- [American Public Health Association – APHA](http://www.apha.org/)

Ohio Department of Health



American Public Health Association - APHA



Faststats A to Z



World Health Organization



Using a Search Engine

- [Google \(http://www.google.com/\)](http://www.google.com/)
- [Google Scholar \(http://scholar.google.com/\)](http://scholar.google.com/)
- [Dogpile \(http://www.dogpile.com/\)](http://www.dogpile.com/)

Google



Google Scholar



Dogpile



Dogpile Search



Pulling Everything together

- It is best to read what you have found
- Try to summarize
- Try to paraphrase
- Provide appropriate bibliographic citations
- Evaluate web pages carefully before including them in your research

Evaluating information found on the internet



Evaluating information found on the internet

- Kirk, E. E. Evaluating information found on the Internet [tutorial on the internet]. Baltimore: the Sheridan Libraries, Johns Hopkins University; 1996 [cited January 13, 2006] . Available from: <http://www.library.jhu.edu/elp/uset/evaluating/>

Pulling everything together

- Word Processor
- Perhaps a program for bibliographic management software
 - Reference Manager (<http://www.refman.com/>)
 - EndNote (<http://www.endnote.com/>)
 - ProCite (<http://www.procite.com/>)
 - RefWorks (available on campus - <http://library.case.edu/ksl/info/news/20050221refwork.s.html>)
 - OhioLINK (<http://www.ohiolink.edu/help/cite-sources.html>)
- Style Manual

Style Manual

- [Publication manual of the American Psychological Association](http://catalog.case.edu/search/o?SEARCH=46642003) (<http://catalog.case.edu/search/o?SEARCH=46642003>)
- [Uniform Requirements for Manuscripts Submitted to Biomedical Journals: Writing and Editing for Biomedical Publication](http://www.icmje.org/) (<http://www.icmje.org/>)

APA

Search results for 'APA' on the University of Illinois at Urbana-Champaign website. The search results show a link to the 'Publication manual of the American Psychological Association'.

LOCATION	CALL NO.	STATUS
MSASS Reserve	BF76 .T.P93 2001	CHECK SHELVES
MSASS Reserve	BF76 .T.P93 2001 c.2	CHECK SHELVES
MSASS Stacks	BF76 .T.P93 2001 c.3	DATE 01-27-06
Allen Reference	W2-345.A31265 2001	LIB USE ONLY
UCL Reserve	W2-345.A31265 2001	CHECK SHELVES
MUSIC Reference	BF76 .T.P93 2001	LIB USE ONLY
Kelvin Smith Quick Ref	BF76 .T.P93 2001	LIB USE ONLY
Kelvin Smith Perm Reserve	BF76 .T.P93 2001	CHECK SHELVES

Uniform Requirements (Vancouver)

International Committee of Medical Journal Editors
Uniform Requirements for Manuscripts Submitted to Biomedical Journals: Writing and Editing for Biomedical Publication

Updated October 2005

The following information is available to be viewed/printed in Adobe Acrobat pdf format:

International Committee of Medical Journal Editors

I. Statement of Purpose

ICMJE Editorial Board

OhioLINK Information

How to Cite Sources in a Paper

Documenting sources used in a paper can be challenging, especially with the variety of new electronic resources now available. Many different style manuals exist. Always ask your class instructor for the style appropriate for the course.

For assistance in compiling your References or List of Works Cited page, consult one of the following Internet sites. Keep in mind, however, that these Internet sites do not give instructions for all types of sources. Please refer to the print copy of the style manual if there is not an appropriate example online.

- Assembling a List of Works Cited in Your Paper is a part of Duke University's Guide to Library Research. Web site. Arranged by type of citation, the information presented includes how to cite articles from journals, magazines, books, book reviews, government documents, newspapers, primary sources, Web pages and online postings. Each section presents an example of a citation in the following formats: APA, Chicago Style, MLA and Turabian. Important elements for the various citation formats are noted.
- Bethford-Martin's ONLINE Citation Styles provides examples of citations for online sources in APA, MLA, Chicago, and CBE style. Online sources included are World Wide Web sites, e-mail messages, Web discussion forum postings, listerv messages, newsgroup messages, real time communication, instant, FTP, and other.

Copyright and Plagiarism

- Copyright Links from KSL
 - (http://library.case.edu/ksl/services/reserves/copy_links.html)
- Plagiarism.org
 - (<http://www.plagiarism.org/>)

KSL's Copyright Information

Copyright Information Links

The following information should not be considered a substitute for legal advice or for official university policy. It is a compilation of information to assist members of the university community as they apply copyright law in an increasingly digital world.

Copyright classes are held every semester for those who would like to know how copyright affects teaching and research. For more information on classes, check our COURSE RESERVES SCHEDULE or contact CASE Library, Head of Customer Services, (606-5300) for more information about the class. If you have a specific question about an item you are placing on Course Reserves, our COURSE RESERVES staff will be happy to answer your question.

Plagiarism

Plagiarism.org

Welcome to Plagiarism.org, the online resource for people concerned with the growing problem of Internet plagiarism. This site is designed to provide the latest information on online plagiarism and protect from Turnitin and iThenticate are now being used by educators and content creators all over the world to fight plagiarism and restore integrity to written work.

Plagiarism.org offers detailed information on the technologies behind Turnitin and iThenticate as well as facts about the rise of Internet plagiarism; the encourage anyone interested in using our anti-plagiarism technologies, or any of our other tools, to get directly to Turnitin or iThenticate. If you would like to find out more about plagiarism and our proprietary technologies, we invite you to spend some time browsing our site.

Cleveland Health Sciences Library

- Reference Department
(<http://www.case.edu/chsl/ref.htm>)
- Library Hours
(<http://www.case.edu/chsl/hours.htm>)
- Library Staff
(<http://www.case.edu/chsl/staff.htm>)

CASE WESTERN RESERVE UNIVERSITY