

"Prevention is better than Treatment", a universal law for every Micro-Endodontic Surgeon

Edmond Onwukwe, DDS; André K. Mickel, DDS, MSD

Case Western Reserve University, School of Dental Medicine, Graduate Endodontics, Cleveland, OH

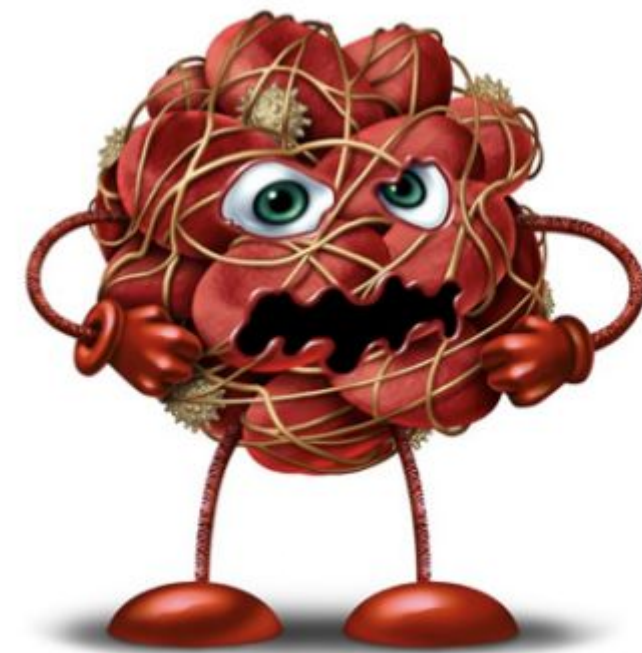
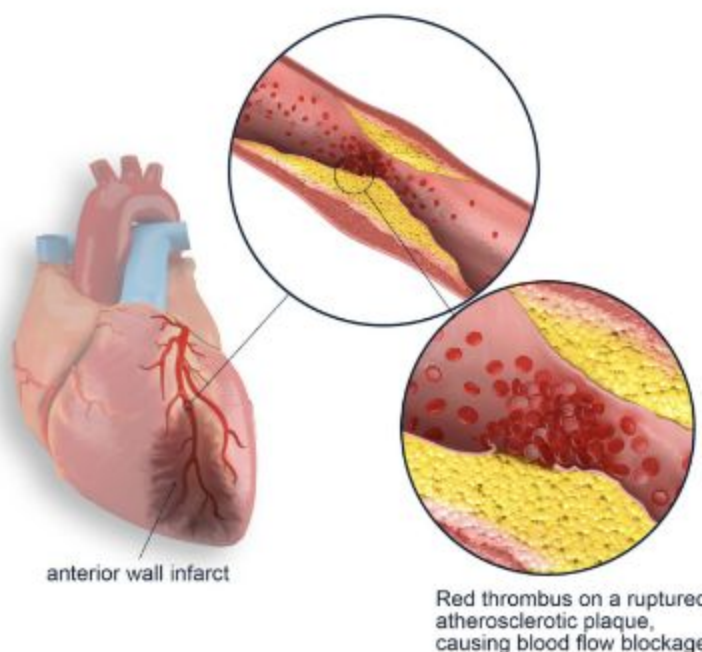
Major Risk Conditions
MRONJ
 Cardiovascular Disease
 Uncontrolled Diabetes

Theme: To recognize, compensate for, or avoid prohibitive medical conditions

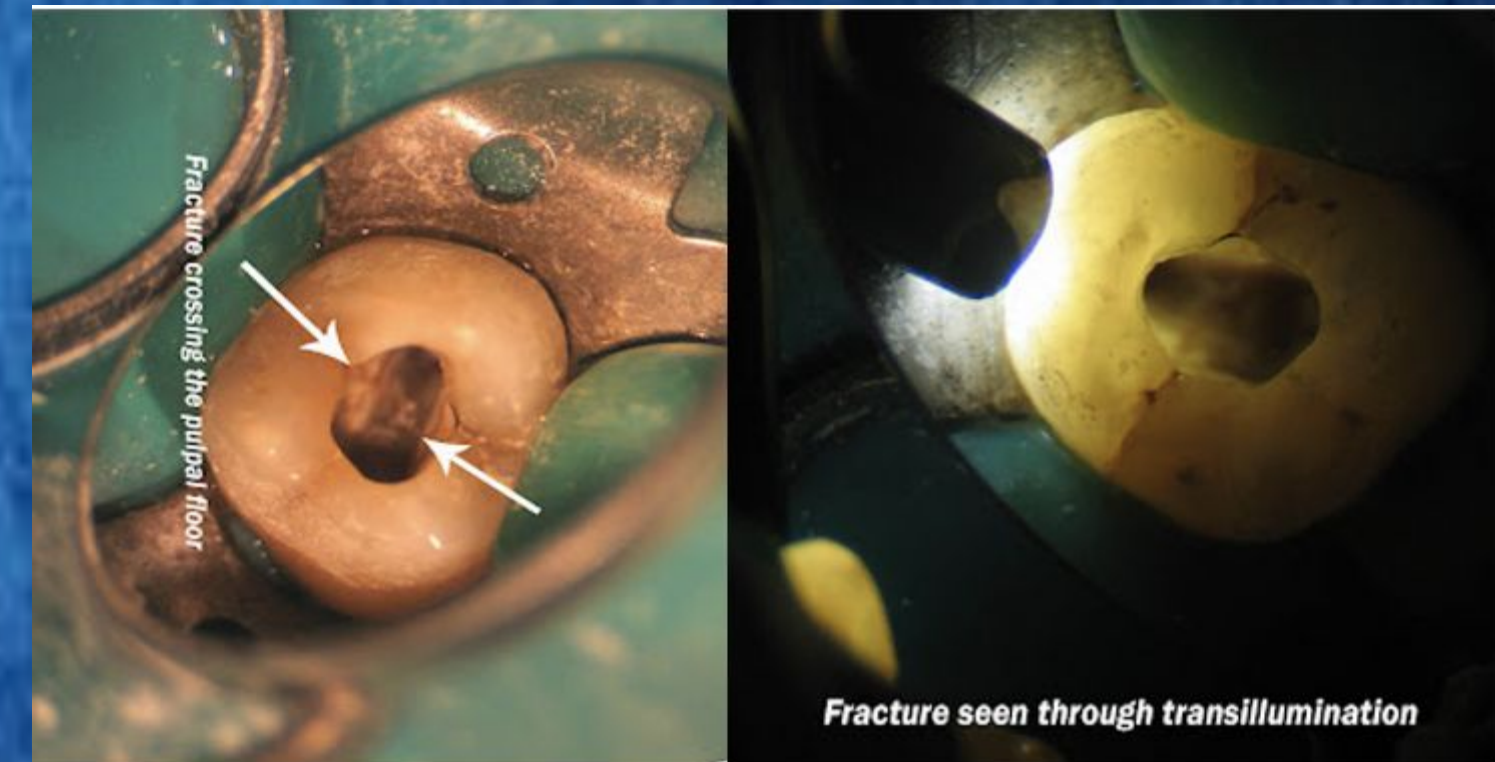
Minor Risk Conditions
 Periodontal Conditions
 Non-Restorable Teeth
 History of I.E or Cardiovascular disease



Myocardial Infarction



Share the responsibility



BLINDNESS

HEART ATTACK

KIDNEY FAILURE

FOOT PROBLEMS

Key Points

- Medical History and clinical judgement is very important before proceeding with any endodontic procedure.
- Consultation from Physician is needed before any invasive treatment

Table 3. Antibiotics and dosages in endodontics

DRUG	LOADING DOSE	ADULT MAINTENANCE DOSE
Amoxicillin	NA	500 mg q8 h 3-7 days
Amoxicillin w/ clavulanic acid	NA	500/125 mg q8h 7 days
Penicillin VK	NA	500 mg q4-6 h 3-7 days
*Azithromycin	500 mg	250 mg q24h (5 days)
*Clindamycin	NA	300 mg q6h 3-7 days
Cephalosporins (Cephalexin)	NA	500 mg q6h 3-7 days
Metronidazole	NA	500 mg q8h 5-7 days

*Penicillin allergy w/hx of hives, anloedema, or anaphylaxis
 **Provides great gram-negative anaerobic activity with Penicillin