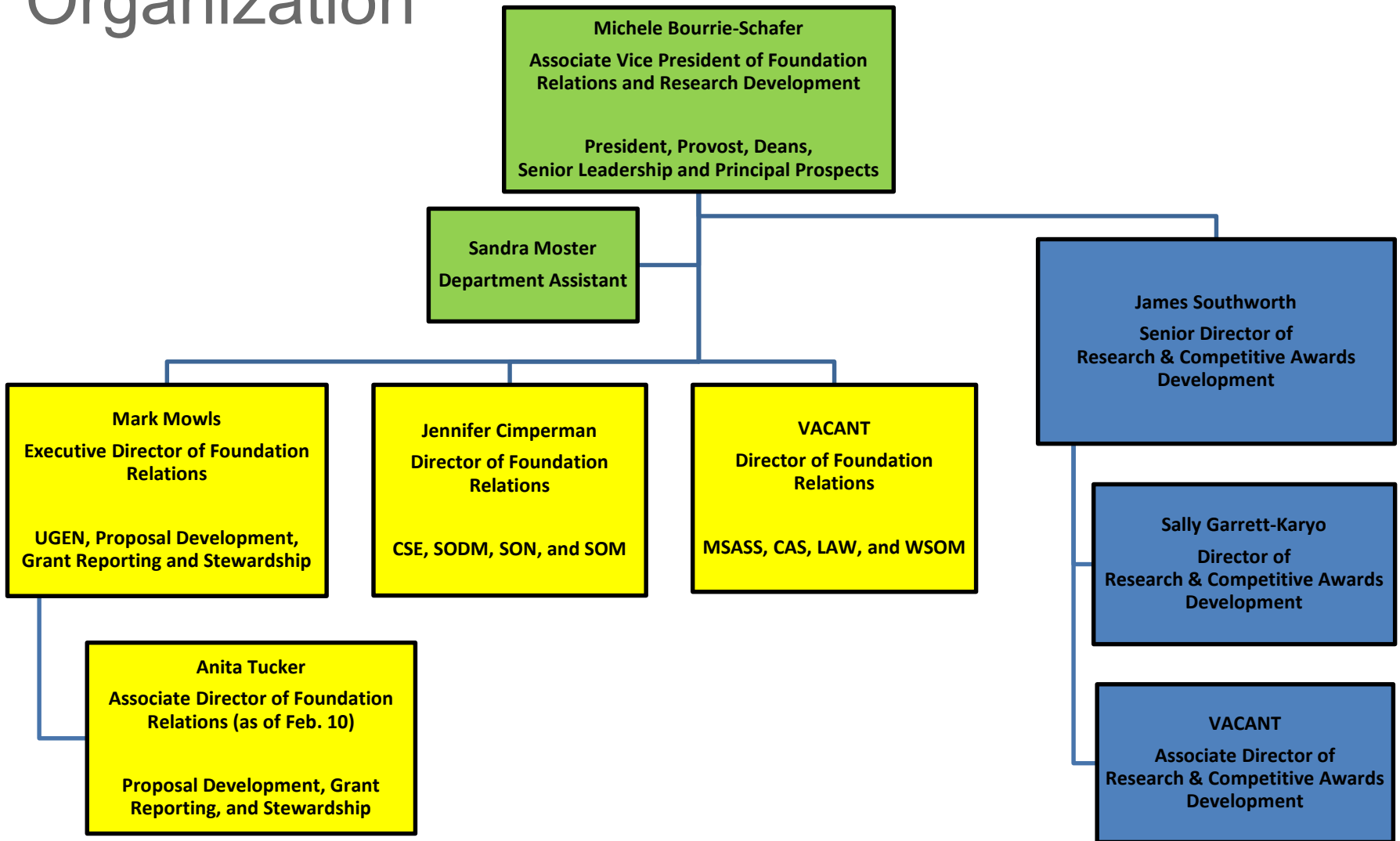


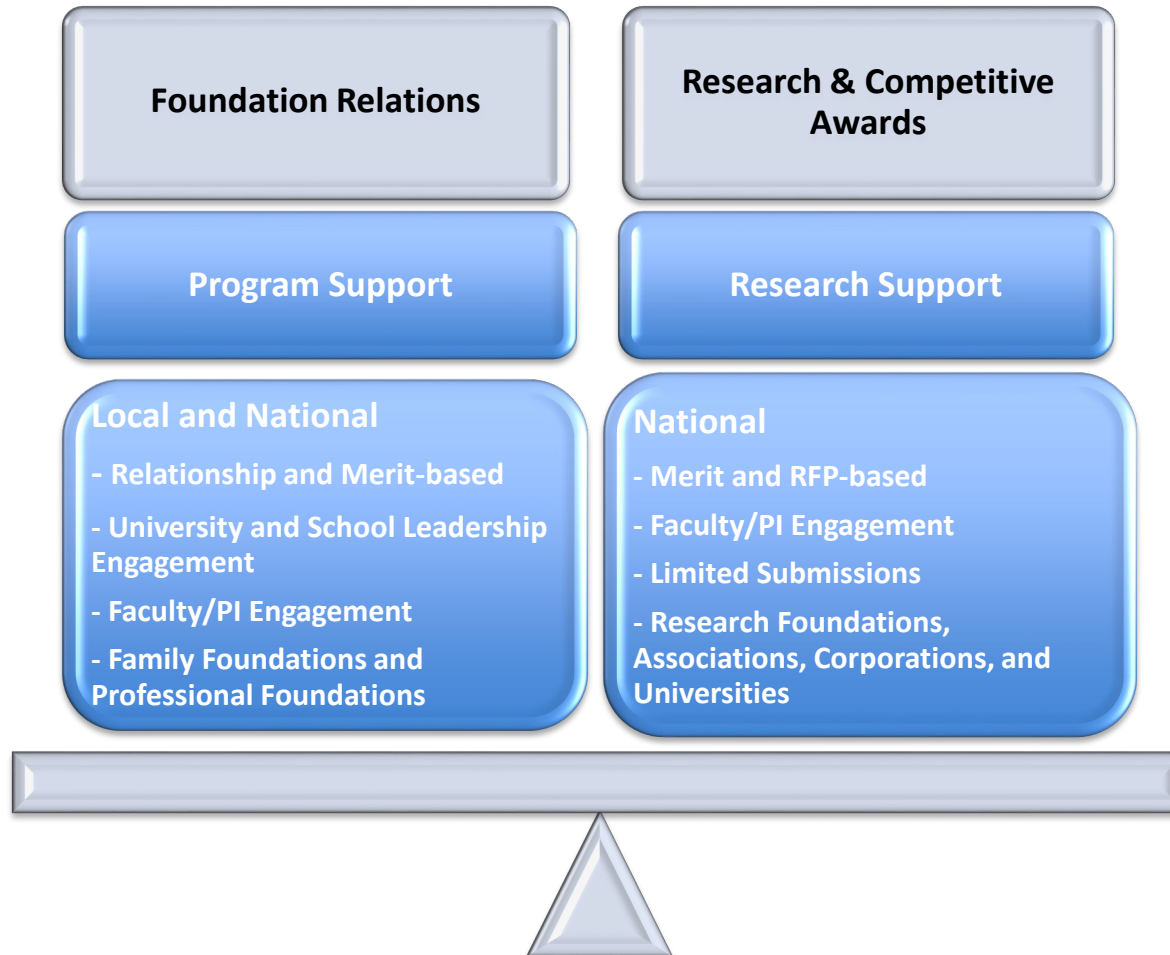
Research & Competitive Awards Development

Sally Garrett-Karyo
Jim Southworth

Organization



Balancing of Responsibilities



Research and Competitive Awards Development

\$7.74 million in research funding is on the table

Institution	2016			2017		
	R&D Expenditures	Nonprofit Support	Percent Nonprofit	R&D Expenditures	Nonprofit Support	Percent Nonprofit
Chicago	\$421.0 M	\$53.7 M	12.8%	\$433.3 M	\$44.1 M	10.1%
Emory	\$614.5 M	\$43.1 M	7.0%			
NYU	\$809.7 M	\$73.6 M	9.1%	\$917.7 M	\$78.0 M	8.5%
Vanderbilt	\$640.8 M	\$27.4 M	4.3%	\$712.0 M	\$28.3 M	4.0%
WUSL	\$741.1 M	\$63.3 M	8.5%	\$754.5 M	\$75.6 M	10.0%
AVERAGE	\$645.4 M	\$52.2 M	8.1%	\$704.4 M	\$56.5 M	8.0%
CWRU	\$405.7 M	\$20.7 M	5.1%	\$408.6 M	\$23.1 M	5.6%

Research and Competitive Awards Development Services

Search grants databases

- Pivot
- Foundation Center
- Private foundation contacts
- Proprietary databases

Work with PI to create compelling proposals

- Understand funder priorities
- Understand submission requirements
- Provide editorial review

Prepare supporting docs, such as bios

- Biosketch/CV formatting
- Drafting letters of support
- Provide non-technical content (e.g., university profile)

Manage deadlines until submission

- Assist research administrators in making SPARTA submissions to funder

Contact Information

Sally Garrett-Karyo

Nord 614

sag101@case.edu

P: 368-4464

Jim Southworth

Nord 617

jxs1546@case.edu

P: 368-2473

