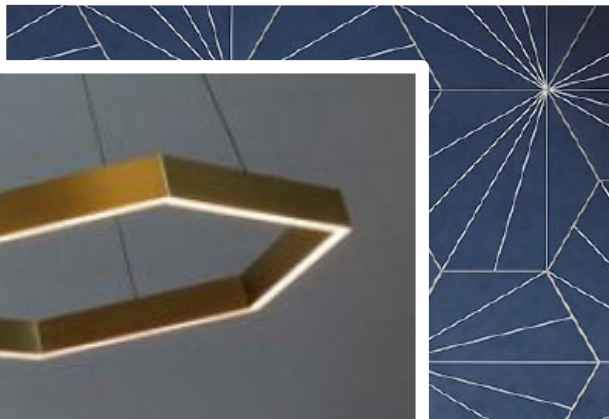




FRIBLEY COMMONS

Coming Fall 2021



BON APPÉTIT
MANAGEMENT COMPANY

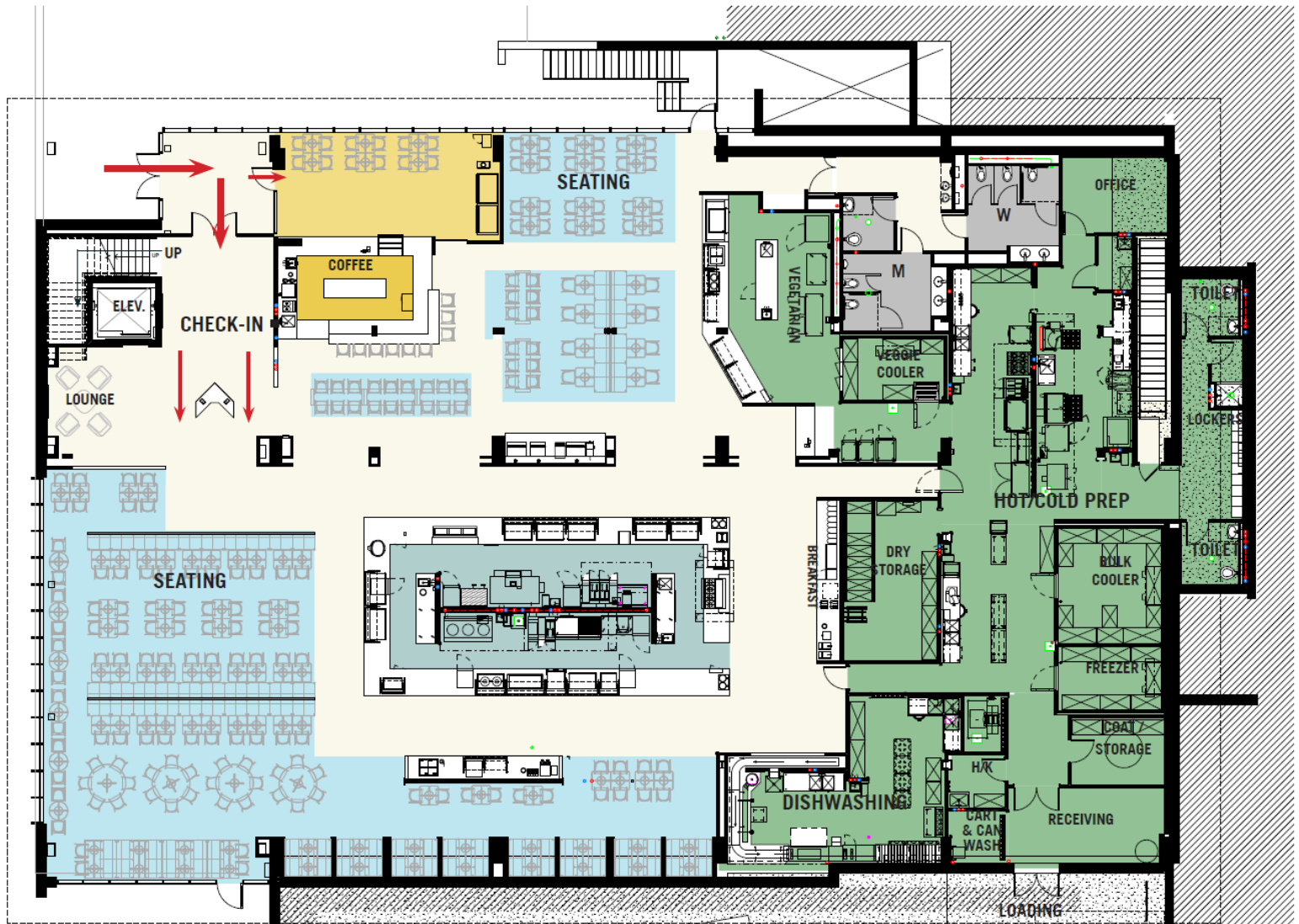
food service for a sustainable future®

GROUND LEVEL



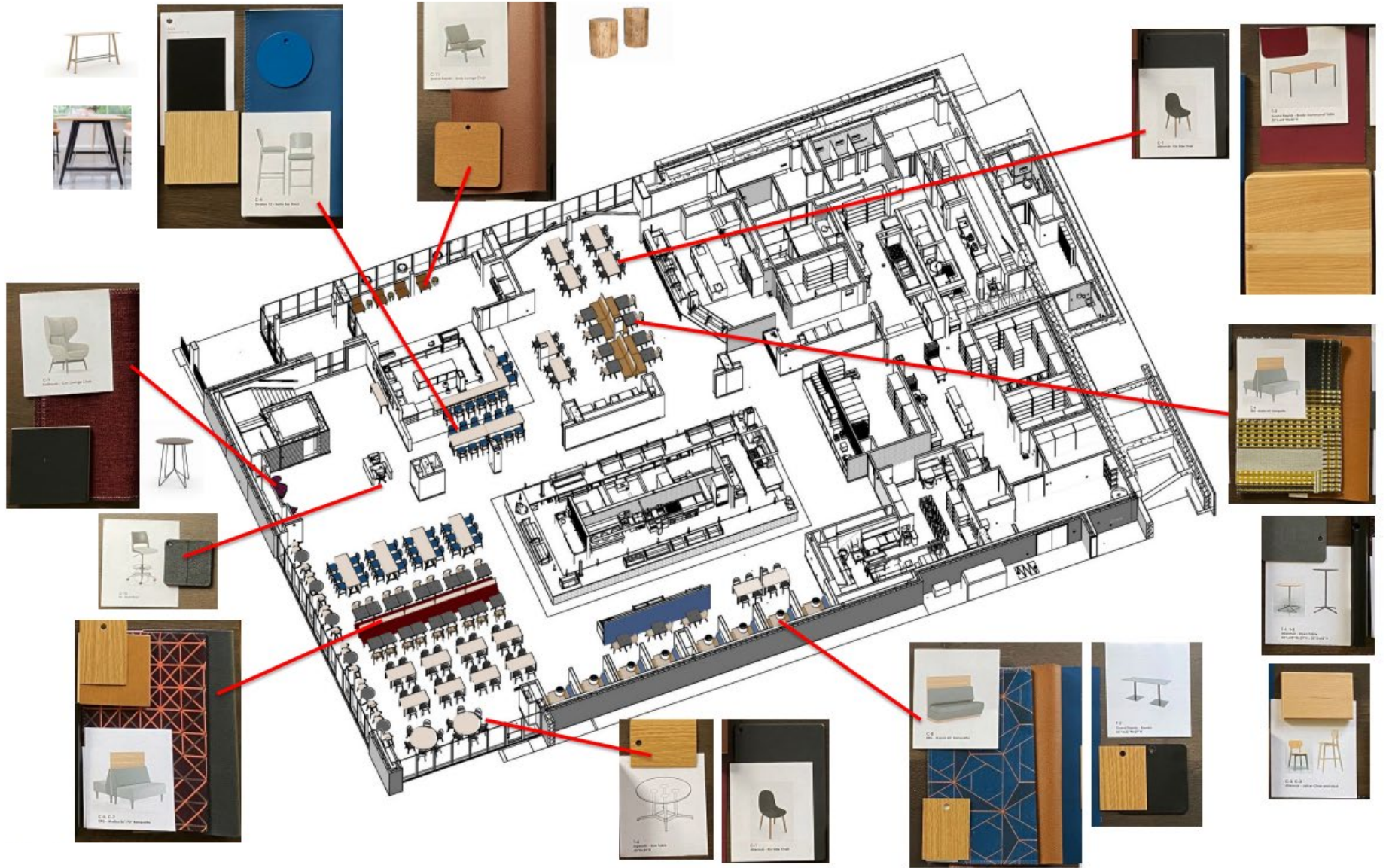
- Main entrance off Adelbert/Murray Hill
 - Entrance to all-you-care-to-eat concept and retail coffee bar
- Serving breakfast, lunch, and dinner
- 15,500 square ft. total for entire Fribley food service
- 5,200 square ft. for dining room only
- Seating for 230 people





● ● ● ● ● ● ● ●



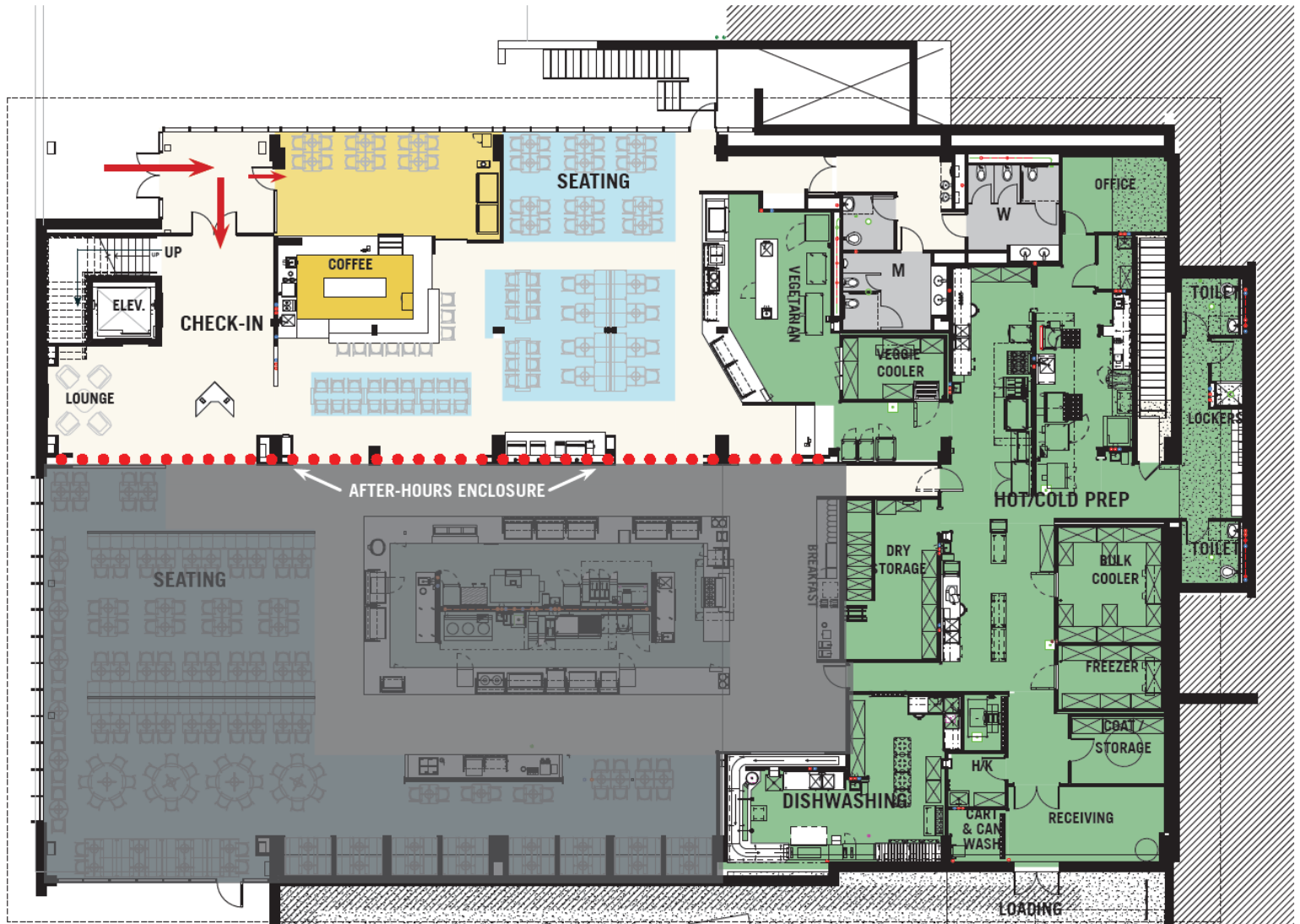


RETAIL COFFEE BAR CONCEPT



- Coffee drinks, espresso, xPress sandwich options and bakery case (similar to Cool Beanz)
- Craft and domestic beer selection (consumed on premise)
- Café with seating area
- Grab n' go cooler
- Closure system that closes café off from the rest of the dining hall
- Café open later than the rest of the dining hall





STATION CONCEPTS



- Plant-forward station
- Breakfast station
 - Eggs, bacon, sausage, congee, oatmeal, omelet station
 - Beverage line
 - Milk, cereals, juices, spreads, breads, bagels, toasters, toppings
 - Vegetarian station (cold)
 - Fruit, yogurt, cottage cheese, overnight oats

continued on next slide



STATION CONCEPTS CONT.



- Vegetarian station
 - Full salad bar, vegetarian soups, alternating vegetarian hot option (similar to present Oasis station)
- Center island
 - Comfort foods – plated entrée of the day, sides, grill and special sandwich area, pizza/pasta/calzone station, daily hot special
 - Alternating Taqueria/Asian concept
 - Panini/deli program (self-serve)
 - Soups and chili



LATE NIGHT OPTIONS



- Grubhub and order-on-site program – made to order menu from the main kitchen, pick up at retail service window.
 - Similar to present Denny's/Melt/L3/Rough Rider Room menuing formats (can be to-go or on premise) or order at Coffee Bar
- Vegetarian station; could feature vegetarian sandwich options, one pass salad bar
- Cold beverage counter open



DINING ROOM LAYOUT



- Eastern outermost wall to become kitchen and office area
 - Restrooms, shower, changing area, lockers, and offices on outermost wall
- Existing courtyard removed and replaced with loading dock
 - Can fit one Sysco truck, one Bon Appétit truck, and trash compactor

