



# 2016 Annual Fire Safety Report



# 2016 ANNUAL FIRE SAFETY REPORT

## Overview:

The information contained in this report was compiled and completed in-compliance with the 2008 Higher Education Opportunity Act (HEOA). The Higher Education Opportunity Act was created by the Department of Education to address several issues on college campuses, including fire safety in on-campus housing. This report does not include Case Western Reserve University's Annual Security Report. To view the Annual Security Report you may go to: <http://www.case.edu/finadmin/security/secrpt15.pdf>

The HEOA requires Universities to maintain a fire log listing all fires that have occurred in their on-campus housing. Case Western Reserve University's fire log is available online at [www.case.edu/finadmin/ehs/FireSafety/2015log.pdf](http://www.case.edu/finadmin/ehs/FireSafety/2015log.pdf). The HEOA also requires the publishing of an annual fire safety report that provides information on the following items: statistics for fires that occurred in on-campus housing facilities; a description of the fire safety systems found in the residence hall facilities; number of regular supervised fire drills; policies or rules on portable electrical appliances, smoking, and open flames in student housing facilities; procedures for student housing evacuation in the case of a fire; policies on fire safety education and training programs provided to students and employees; a list of the titles of each person or organization to which students and employees should report that a fire has occurred; and plans for future improvements in fire safety. The Environmental Health and Safety Department creates and maintains the fire log and the annual fire safety report.

CWRU Police  
216-368-3333

CWRU Police Non-Emergency  
216-368-3300

Enviromental Health and Safety  
216-368-2907

Facilities Services  
216-368-2580

# 2016 ANNUAL FIRE SAFETY REPORT

## Definitions:

**Audible Fire Alarm Notification Appliance** – A fire alarm system component that alerts by the sense of hearing (i.e. bell, horn, message, tones, etc.).

**Cause of Fire** – The factor or factors that give rise to a fire. The causal factor may be, but is not limited to, the result of an intention or unintentional action, mechanical failure, or act of nature (Higher Education Opportunity Act).

**Fire** – Any instance of open flame or other burning in a place not intended to contain the burning or in an uncontrolled manner (Higher Education Opportunity Act).

**Fire alarm system monitored by CWRU PD** – The building’s fire alarm system transmits a signal to the CWRU Police Department’s Dispatch Center, which is constantly attended 24 hours a day 7 days a week. Some fire alarm systems will provide the exact location to the dispatcher of the activated device in the building. This allows the Police and Fire Department to know the exact location of the area of concern in the building before they arrive.

**Fire drill** – A supervised practice of a mandatory evacuation of a building for a fire.

**Fire Extinguishers** – A portable device containing a specialized agent that can be used to extinguish a fire. Fire extinguishers are installed throughout the buildings in accordance with the Ohio Fire Code.

**Fire Rated Doors, Walls, & Partitions (Passive Fire Protection Systems)** – Passive fire protection systems are components of a building designed to have a certain degree of fire resistance. These components are designed to contain the spread of smoke and fire gases, and prevent the spread of them to a certain area for a reasonable period of time. Fire rated doors, walls, and partitions are installed in areas to protect the evacuation of the occupants (i.e. stairwells), separate a specific area from another (i.e. mechanical room, student rooms, etc.), or separate adjoining buildings.

# 2016 ANNUAL FIRE SAFETY REPORT

## Definitions:

**Fire related injury** – Any instance in which a person is injured as a result of a fire, including an injury sustained from a natural or accidental cause, while involved in fire control, attempting rescue, or escaping from the dangers of the fire. The term “person” may include students, employees, visitors, firefighters, or any other individuals (Higher Education Opportunity Act).

**Fire related death** – Any instance in which a person (1) Is killed as a result of a fire, including death resulting from a natural or accidental cause while involved in fire control, attempting rescue, or escaping from the dangers of a fire; or (2) Dies within one year of injuries sustained as a result of the fire (Higher Education Opportunity Act).

**Heat Detectors** – Devices that are only activated by heat. They are used in areas where smoke or steam is likely to be present (i.e. kitchens, bathrooms, and mechanical rooms).

**Intentional Fire (Arson)** – A fire that is ignited under circumstances in which the person knows that the fire should not be ignited (NFPA 921). Example: Knowingly igniting papers on fire on a bulletin board.

**Kitchen Hood Suppression System** – A specially designed fire protection system to extinguish fires that occur on a kitchen’s stove. Upon activation of the system it will release the suppression agent and activate the building’s fire alarm system. Kitchen hood suppression systems can be found in the common cooking areas (if available) in the Residence Halls.

**Smoke Detectors** – Devices that detect visible or invisible particles of combustion (NFPA 72)

**Smoke Detectors (fire alarm initiating)** – Smoke detectors automatically trigger the buildings fire alarm system.

**Smoke Detectors (single station, battery operated)** – Smoke detectors are not connected to the buildings fire alarm system and only sound locally.

# 2016 ANNUAL FIRE SAFETY REPORT

## Definitions:

**Sprinkler System** – A system of piping that is designed to deliver water on a fire to control or extinguish it. The sprinkler heads in the residential facilities are only activated by heat, not smoke or a pull station.

**Undetermined** – A cause classification for fires whenever the cause cannot be proven to an acceptable level of certainty (NFPA 921).

**Unintentional Fire (Accidental)** – A fire that does not involve an intentional human act to ignite or spread fire into an area where the fire should not be (NFPA 921).

Examples: Cooking related fire, smoking materials, open flames, electrical, heating equipment, etc.

**Value of property damage** – The estimated value of the loss of the structure and contents, in terms of the cost of replacement in like kind and quantity. This estimate should include contents damaged by fire, and related damages caused by smoke, water, and overhaul; however, it does not include indirect loss, such as business interruption (Higher Education Opportunity Act).

**Visual Fire Alarm Notification Appliance** – A fire alarm system component that alerts by the sense of sight (i.e. strobe lights).

# 2016 ANNUAL FIRE SAFETY REPORT

## FIRE POLICIES

The following policies apply for all University buildings, including on-campus student housing facilities.

### Smoking

- Smoking is prohibited within all University buildings and student housing facilities.

### Open Flames

- Open flames, candles, candle warmers, or incense are prohibited in residence halls, academic, and administrative buildings.

### Electrical Safety

- Ensure electrical circuits are not overloaded.
- Ensure all electrical appliances are UL rated, and do not overload circuits.
- Ensure extension cords are UL rated and do not extend into other rooms through doors, windows, or stairwells.
- Ensure festive lighting is UL rated.

### Fire Safety Systems

- Do not tamper with fire protection systems. Ensure they are not obstructed from view or access. All alarm systems must be kept free of storage materials and remain readily accessible.
- Fire and smoke barrier doors must be closed at all times.
- Storage of items may not be within 24 inches of ceilings, block exits, stairwells, extinguishers, or fire alarm pull stations in any building on campus.

### Holiday Decorations

- Holiday decorations must not impede fire safety devices such as exit signs, sprinkler systems, smoke alarms, strobe lights or any other device.
- Live Christmas trees and wreaths are prohibited.

# 2016 ANNUAL FIRE SAFETY REPORT

## FIRE POLICIES

### ON CAMPUS HOUSING PROHIBITED ITEMS

The following policies apply for all University on-campus student housing facilities.

- Hot Plates or similar items with an open heating element.
- Upholstered furniture (unless certified flame retardant).
- Curtains, draperies, hangings, and other materials suspended from walls or ceiling
  - o Unless certified flame retardant.
  - o Resident must be able to provide proof of fire retardancy.
- Space heaters.
- Refrigerators more than 4 c.u. ft.
- Any equipment that places an extraordinary load on the electrical system (i.e. electrical heaters, air conditioners).
- Halogen lighting sources.
- Extension cords or similar electrical equipment.
- Un-fused surge protectors.
- Storage of motor vehicles within a residential facility.
- Flammable/combustible liquids & gases.
- Explosives/ Fireworks.
- Air rifles and guns.
- Gunpowder.
- Knives.
- Dogs, cats, and ferrets  
(All others must complete a Pet Registration through Housing)

# 2016 ANNUAL FIRE SAFETY REPORT

## FIRE POLICIES

### CAMPUS BUILDING EVACUATIONS

In addition to adhering to fire policies, students, faculty, and staff must also understand and practice policies regarding activities during a fire alarm at Case Western Reserve University.

If a student, faculty, or staff member discovers smoke or an actual fire, they should immediately pull the nearest fire alarm and evacuate the building. Upon exit of the building they should dial 216-368-3333 to report the fire.

All building occupants should become familiar with posted evacuation routes and procedures for their buildings. These are typically located near elevators, stairwells, and exits. Any student residing in or present in any university residence hall must evacuate the building when a fire alarm sounds using stairwells and exits.

All building occupants should know and memorize two exits from the building, and understand that an evacuation may require you to evacuate a smoke filled area. In the case of smoke, stay low and check all doors before proceeding to an exit.

Windows may also be an exit option in some buildings. Should you need to exit from a window, verbally summon the assistance of a first responder before attempting to exit a building from a window.

Upon exiting the building occupants must move to a location away from the building and fire equipment until notified that the building is clear to be re-occupied by first responders.

After evacuating, if you know of an occupant that may still be in the impacted building, provide that information to first responders by giving the name and location of the individual so they may assist them.

CWRU Police  
216-368-3333

CWRU Police Non-Emergency  
216-368-3300

Environmental Health and Safety  
216-368-2907

Facilities Services  
216-368-2580



# 2016 ANNUAL FIRE SAFETY REPORT

## **FIRE STATISTICS AND FIRE LOG**

Case Western Reserve's Department of Environmental Health and Safety maintains a written Fire Log that records required incident information concerning fires that occur in on-campus student housing facilities.

In addition to the Fire Log, the university is required to provide an annual report to the campus community on the fires recorded in the Fire Log. The Fire Statistics section is intended to satisfy this requirement and contains information about all fire recorded in the Fire Log.

The Fire Log provides the date reported, nature, date the fire occurred, time, and general location of each fire. The university is required to update the Fire Log within two business days of receiving the information about a fire in an on-campus housing facility.

The Fire Log will be open to public inspection for the most recent 60-day period during normal business hours. Any portion of the Fire Log older than 60 days will be made available within two business days of a request for public inspection.

The Fire Log may be viewed online by visiting the EHS website at:  
<https://www.case.edu/ehs/>

To report that a fire has occurred on campus (non-emergency) so that it may be included in the Fire Log, please contact Joseph Nikstenas, the Fire and Life Safety Specialist for Case Western Reserve University (formerly Roy Evans), at 216-368-0021 or [joenik@case.edu](mailto:joenik@case.edu).

# 2016 ANNUAL FIRE SAFETY REPORT

## FIRE STATISTICS AND FIRE LOG

### 2015-On-Campus Housing

Residential Facilities Building Common Name: Address	Number of Fires	Cause of Fire	Number of Fire Related Injuries	Number of Fire Related Deaths	Value of Property Damaged
(New) 1576 E. 115th Street	0	N/A	N/A	N/A	N/A
1680 Building: 1680 E. 117th St.	0	N/A	N/A	N/A	N/A
1727 E. 116th St.	0	N/A	N/A	N/A	N/A
1719 E. 116th St.	0	N/A	N/A	N/A	N/A
Alumni House: 2345 Murray Hill Dr.	0	N/A	N/A	N/A	N/A
Clarke Tower: 1596 E. 115th St.	0	N/A	N/A	N/A	N/A
Cutler House: 1616 E. 115th St.	0	N/A	N/A	N/A	N/A
Cutter House: 11301 Juniper Rd.	0	N/A	N/A	N/A	N/A
Glaser House: 11900 Carlton Rd.	0	N/A	N/A	N/A	N/A
Hitchcock House: 1626 E. 115th St.	0	N/A	N/A	N/A	N/A
Howe House: 2335 Murray Hill Rd.	0	N/A	N/A	N/A	N/A
Kusch House: 11904 Carlton Rd.	0	N/A	N/A	N/A	N/A
Michelson House: 11896 Carlton Rd.	0	N/A	N/A	N/A	N/A
NRV House 1: 1672 E. 117th St.	0	N/A	N/A	N/A	N/A
NRV House 2: 1697 E. 116th St.	0	N/A	N/A	N/A	N/A
NRV House 3: 1681 E. 116th St.	0	N/A	N/A	N/A	N/A
NRV House 3A: 1677 E. 115th St.	0	N/A	N/A	N/A	N/A
NRV House 4: 1665 E. 115th St.	1	Unattended cooking in oven.	0	0	\$99.00-\$1,000
NRV House 5: 1641 E. 115th St.	0	N/A	N/A	N/A	N/A
NRV House 6: 1623 E. 115th St.	0	N/A	N/A	N/A	N/A
NRV House 7: 1611 E. 115th St.	0	N/A	N/A	N/A	N/A
Norton House: 11443 Juniper Rd.	0	N/A	N/A	N/A	N/A
Pierce House: 1636 E. 115th St.	0	N/A	N/A	N/A	N/A
Raymond House: 11447 Juniper Rd.	0	N/A	N/A	N/A	N/A
Recovery House: 2272 Murray Hill Rd.	0	N/A	N/A	N/A	N/A
Sherman House: 11439 Juniper Rd.	0	N/A	N/A	N/A	N/A
Smith House: 11311 Juniper Rd.	0	N/A	N/A	N/A	N/A
Staley House: 2365 Murray Hill Rd.	0	N/A	N/A	N/A	N/A

CWRU Police  
216-368-3333

CWRU Police Non-Emergency  
216-368-3300

Enviromental Health and Safety  
216-368-2907

Facilities Services  
216-368-2580

# 2016 ANNUAL FIRE SAFETY REPORT

## FIRE STATISTICS AND FIRE LOG

2015-On-Campus Housing					
Residential Facilities Building Common Name: Address	Number of Fires	Cause of Fire	Number of Fire Related Injuries	Number of Fire Related Deaths	Value of Property Damaged
Storrs House: 1615 Mistletoe Dr.	0	N/A	N/A	N/A	N/A
Taft House: 11341 Juniper Rd.	0	N/A	N/A	N/A	N/A
Taplin House: 11331 Juniper Rd.	0	N/A	N/A	N/A	N/A
The Noble Building: 1720-1728 E. 116th	0	N/A	N/A	N/A	N/A
Tippit House: 2355 Murray Hill Rd.	1	Oven mitt placed on stove top Accidental	0	0	\$0.00-\$99.00
Triangle Tower 1: 11457 Mayfield	0	N/A	N/A	N/A	N/A
Triangle Tower 2: 11477 Mayfield	0	N/A	N/A	N/A	N/A
Twin Gables: 1715 E. 115th St.	0	N/A	N/A	N/A	N/A
Tyler House: 11435 Juniper Rd.	0	N/A	N/A	N/A	N/A
Alpha Chi Omega: 11421 Bellflower Rd.	0	N/A	N/A	N/A	N/A
Alpha Phi: 11116 Magnolia Rd.	0	N/A	N/A	N/A	N/A
Sigma Phi Epsilon: 2255 Murray Hill Rd.	0	N/A	N/A	N/A	N/A
Beta Theta Pi: 2253 Murray Hill Rd.	0	N/A	N/A	N/A	N/A
Delta Gamma: 2265 Murray Hill Rd.	0	N/A	N/A	N/A	N/A
Phi Kappa Tau: 11909 Carlton Rd.	0	N/A	N/A	N/A	N/A
Sigma Chi: 11911 Carlton Rd.	0	N/A	N/A	N/A	N/A
Phi Delta Theta: 2225 Murray Hill Rd.	0	N/A	N/A	N/A	N/A
Phi Kappa Psi: 11915 Carlton Rd.	0	N/A	N/A	N/A	N/A
Delta Kappa Upsilon: 11913 Carlton Rd.	0	N/A	N/A	N/A	N/A
Phi Mu: 11418 Bellflower Rd.	0	N/A	N/A	N/A	N/A
Phi Sigma Rho: 11901 Carlton Rd.	0	N/A	N/A	N/A	N/A
Sigma Nu: 2235 Murray Hill Rd.	0	N/A	N/A	N/A	N/A
Sigma Psi: 11921 Carlton Rd.	0	N/A	N/A	N/A	N/A
Kappa Alpha Theta: 11923 Carlton Rd.	0	N/A	N/A	N/A	N/A
Theta Chi: 11136 Magnolia Dr.	0	N/A	N/A	N/A	N/A
Zeta Psi: 11925 Carlton Rd.	0	N/A	N/A	N/A	N/A

CWRU Police  
216-368-3333

CWRU Police Non-Emergency  
216-368-3300

Enviromental Health and Safety  
216-368-2907

Facilities Services  
216-368-2580

# 2016 ANNUAL FIRE SAFETY REPORT

## FIRE STATISTICS AND FIRE LOG

### 2014-On-Campus Housing

Residential Facilities Building Common Name: Address	Number of Fires	Cause of Fire	Number of Fire Related Injuries	Number of Fire Related Deaths	Value of Property Damaged
<b>1680 Building:</b> 1680 E. 117th St.	0	N/A	N/A	N/A	N/A
<b>1727 E. 116th St.</b>	0	N/A	N/A	N/A	N/A
<b>1719 E. 116th St.</b>	0	N/A	N/A	N/A	N/A
<b>Alumni House:</b> 2345 Murray Hill Dr.	0	N/A	N/A	N/A	N/A
<b>Clarke Tower:</b> 1596 E. 115th St.	0	N/A	N/A	N/A	N/A
<b>Cutler House:</b> 1616 E. 115th St.	0	N/A	N/A	N/A	N/A
<b>Cutter House:</b> 11301 Juniper Rd.	0	N/A	N/A	N/A	N/A
<b>Glaser House:</b> 11900 Carlton Rd.	1	Intentional (Burnt Paper)	0	0	\$0.00-\$99.00
<b>Hitchcock House:</b> 1626 E. 115th St.	0	N/A	N/A	N/A	N/A
<b>Howe House:</b> 2335 Murray Hill Rd.	0	N/A	N/A	N/A	N/A
<b>Kusch House:</b> 11904 Carlton Rd.	0	N/A	N/A	N/A	N/A
<b>Michelson House:</b> 11896 Carlton Rd.	0	N/A	N/A	N/A	N/A
<b>NRV House 1:</b> 1672 E. 117th St.	0	N/A	N/A	N/A	N/A
<b>NRV House 2:</b> 1697 E. 116th St.	0	N/A	N/A	N/A	N/A
<b>NRV House 3:</b> 1681 E. 116th St.	0	N/A	N/A	N/A	N/A
<b>NRV House 3A:</b> 1677 E. 115th St.	0	N/A	N/A	N/A	N/A
<b>NRV House 4:</b> 1665 E. 115th St.	0	N/A	N/A	N/A	N/A
<b>NRV House 5:</b> 1641 E. 115th St.	0	N/A	N/A	N/A	N/A
<b>NRV House 6:</b> 1623 E. 115th St.	0	N/A	N/A	N/A	N/A
<b>NRV House 7:</b> 1611 E. 115th St.	1	Accidental (Stove Top Grease Fire)	0	0	\$0.00-\$99.00
<b>Norton House:</b> 11443 Juniper Rd.	0	N/A	N/A	N/A	N/A
<b>Pierce House:</b> 1636 E. 115th St.	0	N/A	N/A	N/A	N/A
<b>Raymond House:</b> 11447 Juniper Rd.	0	N/A	N/A	N/A	N/A
<b>Recovery House:</b> 2272 Murray Hill Rd.	0	N/A	N/A	N/A	N/A
<b>Sherman House:</b> 11439 Juniper Rd.	0	N/A	N/A	N/A	N/A
<b>Smith House:</b> 11311 Juniper Rd.	0	N/A	N/A	N/A	N/A
<b>Staley House:</b> 2365 Murray Hill Rd.	1	Intentional (Burnt Paper)	0	0	\$0.00-\$99.00

CWRU Police  
216-368-3333

CWRU Police Non-Emergency  
216-368-3300

Environmental Health and Safety  
216-368-2907

Facilities Services  
216-368-2580



# 2016 ANNUAL FIRE SAFETY REPORT

## FIRE STATISTICS AND FIRE LOG

### 2014-On-Campus Housing

Residential Facilities Building Common Name: Address	Number of Fires	Cause of Fire	Number of Fire Related Injuries	Number of Fire Related Deaths	Value of Property Damaged
<b>Storrs House:</b> 1615 Mistletoe Dr.	0	N/A	N/A	N/A	N/A
<b>Taft House:</b> 11341 Juniper Rd.	0	N/A	N/A	N/A	N/A
<b>Taplin House:</b> 11331 Juniper Rd.	0	N/A	N/A	N/A	N/A
<b>The Noble Building:</b> 1720-1728 E. 116th	0	N/A	N/A	N/A	N/A
<b>Tippit House:</b> 2355 Murray Hill Rd.	0	N/A	N/A	N/A	N/A
<b>(New) Triangle Tower 1:</b> 11457 Mayfield	0	N/A	N/A	N/A	N/A
<b>(New) Triangle Tower 2:</b> 11477 Mayfield	0	N/A	N/A	N/A	N/A
<b>Twin Gables:</b> 1715 E. 115th St.	0	N/A	N/A	N/A	N/A
<b>Tyler House:</b> 11435 Juniper Rd.	1	Accidental (Fire in Microwave)	0	0	\$100.00 - \$999.00
<b>Alpha Chi Omega:</b> 11421 Bellflower Rd.	0	N/A	N/A	N/A	N/A
<b>Alpha Phi:</b> 11116 Magnolia Rd.	0	N/A	N/A	N/A	N/A
<b>Sigma Phi Epsilon:</b> 2255 Murray Hill Rd.	0	N/A	N/A	N/A	N/A
<b>Beta Theta Pi:</b> 2253 Murray Hill Rd.	0	N/A	N/A	N/A	N/A
<b>Delta Gamma:</b> 2265 Murray Hill Rd.	0	N/A	N/A	N/A	N/A
<b>Phi Kappa Tau:</b> 11909 Carlton Rd.	0	N/A	N/A	N/A	N/A
<b>Sigma Chi:</b> 11911 Carlton Rd.	0	N/A	N/A	N/A	N/A
<b>Phi Delta Theta:</b> 2225 Murray Hill Rd.	0	N/A	N/A	N/A	N/A
<b>Phi Kappa Psi:</b> 11915 Carlton Rd.	0	N/A	N/A	N/A	N/A
<b>Delta Kappa Upsilon:</b> 11913 Carlton Rd.	0	N/A	N/A	N/A	N/A
<b>Phi Mu:</b> 11418 Bellflower Rd.	0	N/A	N/A	N/A	N/A
<b>Phi Sigma Rho:</b> 11901 Carlton Rd.	0	N/A	N/A	N/A	N/A
<b>Sigma Nu:</b> 2235 Murray Hill Rd.	0	N/A	N/A	N/A	N/A
<b>Sigma Psi:</b> 11921 Carlton Rd.	0	N/A	N/A	N/A	N/A
<b>Kappa Alpha Theta:</b> 11923 Carlton Rd.	0	N/A	N/A	N/A	N/A
<b>Theta Chi:</b> 11136 Magnolia Dr.	0	N/A	N/A	N/A	N/A
<b>Zeta Psi:</b> 11925 Carlton Rd.	0	N/A	N/A	N/A	N/A

CWRU Police  
216-368-3333

CWRU Police Non-Emergency  
216-368-3300

Enviromental Health and Safety  
216-368-2907

Facilities Services  
216-368-2580

# 2016 ANNUAL FIRE SAFETY REPORT

## FIRE STATISTICS AND FIRE LOG

### 2013-On-Campus Housing

Residential Facilities Building Common Name: Address	Number of Fires	Cause of Fire	Number of Fire Related Injuries	Number of Fire Related Deaths	Value of Property Damaged
<b>1680 Building:</b> 1680 E. 117th St.	0	N/A	N/A	N/A	N/A
<b>1727 E. 116th St.</b>	0	N/A	N/A	N/A	N/A
<b>1719 E. 116th St.</b>	0	N/A	N/A	N/A	N/A
<b>Alumni House:</b> 2345 Murray Hill Dr.	0	N/A	N/A	N/A	N/A
<b>Clarke Tower:</b> 1596 E. 115th St.	1 of 2	Intentional (Burnt Paper)	0	0	\$0.00 - \$99.00
	2 of 2	Intentional (Burnt Paper)	0	0	\$0.00 - \$99.00
<b>Cutler House:</b> 1616 E. 115th St.	0	N/A	N/A	N/A	N/A
<b>Cutter House:</b> 11301 Juniper Rd.	0	N/A	N/A	N/A	N/A
<b>Glaser House:</b> 11900 Carlton Rd.	0	N/A	N/A	N/A	N/A
<b>Hitchcock House:</b> 1626 E. 115th St.	0	N/A	N/A	N/A	N/A
<b>Howe House:</b> 2335 Murray Hill Rd.	0	N/A	N/A	N/A	N/A
<b>Kusch House:</b> 11904 Carlton Rd.	0	N/A	N/A	N/A	N/A
<b>Michelson House:</b> 11896 Carlton Rd.	0	N/A	N/A	N/A	N/A
<b>NRV House 1:</b> 1672 E. 117th St.	1	Accidental (Unattended Cooking)	0	0	\$1,000 - \$9,999
<b>NRV House 2:</b> 1697 E. 116th St.	0	N/A	N/A	N/A	N/A
<b>NRV House 3:</b> 1681 E. 116th St.	0	N/A	N/A	N/A	N/A
<b>NRV House 3A:</b> 1677 E. 115th St.	1	Accidental (Hat placed on lamp)	0	0	\$0.00 - \$99.00
<b>NRV House 4:</b> 1665 E. 115th St.	0	N/A	N/A	N/A	N/A
<b>NRV House 5:</b> 1641 E. 115th St.	0	N/A	N/A	N/A	N/A
<b>NRV House 6:</b> 1623 E. 115th St.	0	N/A	N/A	N/A	N/A
<b>NRV House 7:</b> 1611 E. 115th St.	0	N/A	N/A	N/A	N/A
<b>Norton House:</b> 11443 Juniper Rd.	0	N/A	N/A	N/A	N/A
<b>Pierce House:</b> 1636 E. 115th St.	0	N/A	N/A	N/A	N/A
<b>Raymond House:</b> 11447 Juniper Rd.	0	N/A	N/A	N/A	N/A

CWRU Police  
216-368-3333

CWRU Police Non-Emergency  
216-368-3300

Environmental Health and Safety  
216-368-2907

Facilities Services  
216-368-2580

# 2016 ANNUAL FIRE SAFETY REPORT

## FIRE STATISTICS AND FIRE LOG

### 2013-On-Campus Housing

Residential Facilities <b>Building Common Name:</b> Address	Number of Fires	Cause of Fire	Number of Fire Related Injuries	Number of Fire Related Deaths	Value of Property Damaged
<b>Recovery House:</b> 2272 Murray Hill Rd.	0	N/A	N/A	N/A	N/A
<b>Sherman House:</b> 11439 Juniper Rd.	0	N/A	N/A	N/A	N/A
<b>Smith House:</b> 11311 Juniper Rd.	0	N/A	N/A	N/A	N/A
<b>Staley House:</b> 2365 Murray Hill Rd.	1	Accidental (Unattended Cooking)	0	0	\$0.00 - \$99.00
<b>Storrs House:</b> 1615 Mistletoe Dr.	0	N/A	N/A	N/A	N/A
<b>Taft House:</b> 11341 Juniper Rd.	0	N/A	N/A	N/A	N/A
<b>Taplin House:</b> 11331 Juniper Rd.	0	N/A	N/A	N/A	N/A
<b>The Noble Building:</b> 1720-1728 E. 116th	0	N/A	N/A	N/A	N/A
<b>Tippit House:</b> 2355 Murray Hill Rd.	0	N/A	N/A	N/A	N/A
<b>Twin Gables:</b> 1715 E. 115th St.	0	N/A	N/A	N/A	N/A
<b>Tyler House:</b> 11435 Juniper Rd.	0	N/A	N/A	N/A	N/A
<b>Alpha Chi Omega:</b> 11421 Bellflower Rd.	0	N/A	N/A	N/A	N/A
<b>Alpha Phi:</b> 11116 Magnolia Rd.	0	N/A	N/A	N/A	N/A
<b>Sigma Phi Epsilon:</b> 2255 Murray Hill Rd.	0	N/A	N/A	N/A	N/A
<b>Beta Theta Pi:</b> 2253 Murray Hill Rd.	0	N/A	N/A	N/A	N/A
<b>Delta Gamma:</b> 2265 Murray Hill Rd.	0	N/A	N/A	N/A	N/A
<b>Phi Kappa Tau:</b> 11909 Carlton Rd.	0	N/A	N/A	N/A	N/A
<b>Sigma Chi:</b> 11911 Carlton Rd.	0	N/A	N/A	N/A	N/A
<b>Phi Delta Theta:</b> 2225 Murray Hill Rd.	0	N/A	N/A	N/A	N/A
<b>Phi Kappa Psi:</b> 11915 Carlton Rd.	0	N/A	N/A	N/A	N/A
<b>Delta Kappa Upsilon:</b> 11913 Carlton Rd.	0	N/A	N/A	N/A	N/A
<b>Phi Mu:</b> 11418 Bellflower Rd.	0	N/A	N/A	N/A	N/A
<b>Phi Sigma Rho:</b> 11901 Carlton Rd.	0	N/A	N/A	N/A	N/A
<b>Sigma Nu:</b> 2235 Murray Hill Rd.	0	N/A	N/A	N/A	N/A
<b>Sigma Psi:</b> 11921 Carlton Rd.	0	N/A	N/A	N/A	N/A
<b>Kappa Alpha Theta:</b> 11923 Carlton Rd.	0	N/A	N/A	N/A	N/A
<b>Theta Chi:</b> 11136 Magnolia Dr.	0	N/A	N/A	N/A	N/A
<b>Zeta Psi:</b> 11925 Carlton Rd.	0	N/A	N/A	N/A	N/A

**CWRU Police**  
216-368-3333

**CWRU Police Non-Emergency**  
216-368-3300

**Enviromental Health and Safety**  
216-368-2907

**Facilities Services**  
216-368-2580

# 2016 ANNUAL FIRE SAFETY REPORT

On-Campus Housing Facilities	Fire Alarm System Monitored by CWRU PD	Smoke Detectors (Fire Alarm Initiating)	Smoke Detectors (Single Station, Non-Fire Alarm Initiating)	Heat Detectors	Audible Fire Alarm Notification System (Bell, Horn, Message, Tones, etc.)	Visual Fire Alarm Notification System (Strobes)	Sprinkler System(Fully Sprinklered unless noted)	Kitchen Hood Suppression System	Fire Extinguishers	Fire Rated Doors, Walls, & Partitions	Number of Fire Drills
1576 E. 115th Street	X	X	X	X	X	X	X		X	X	4
1680 Building	X	X Hall-ways Only	X	X	X	X			X		4
1727 E. 116th Street	X	X Hall-ways Only	X	X	X	X			X		4
1719 E. 116th Street	X	X Hall-ways Only	X	X	X	X			X		4
Alumni House	X	X		X	X	X		X	X	X	4
Clarke Tower	X	X			X	X	X	X	X	X	4
Cutler	X	X		X	X	X		X	X	X	4
Cutter	X	X		X	X	X		X	X	X	4
Glaser	X	X		X	X	X	X Basement Only	X	X	X	4
Hitchcock	X	X		X	X	X		X	X	X	4
House 1	X	X	X	X	X	X	X		X	X	4
House 2	X	X	X	X	X	X	X		X	X	4
House 3	X	X	X		X	X	X		X	X	4
House 3A	X	X	X		X	X	X		X	X	4
House 4	X	X	X	X	X	X	X		X	X	4
House 5	X	X	X	X	X	X	X		X	X	4
House 6	X	X	X	X	X	X	X		X	X	4
House 7	X	X	X	X	X	X	X		X	X	4
Howe	X	X		X	X	X		X	X	X	4

CWRU Police  
216-368-3333

CWRU Police Non-Emergency  
216-368-3300

Enviromental Health and Safety  
216-368-2907

Facilities Services  
216-368-2580



# 2016 ANNUAL FIRE SAFETY REPORT

On-Campus Housing Facilities	Fire Alarm System Monitored by CWRU PD	Smoke Detectors (Fire Alarm Initiating)	Smoke Detectors (Single Station, Non-Fire Alarm Initiating)	Heat Detectors	Audible Fire Alarm Notification System (Bell, Horn, Message, Tones, etc.)	Visual Fire Alarm Notification System (Strobes)	Sprinkler System(Fully Sprinklered unless noted)	Kitchen Hood Suppression System	Fire Extinguishers	Fire Rated Doors, Walls, & Partitions	Number of Fire Drills
Kusch	X	X		X	X	X	X Basement Only	X	X	X	4
Michelson	X	X		X	X	X	X Basement Only	X	X	X	4
Norton	X	X		X	X	X		X	X	X	4
Pierce	X	X		X	X	X		X	X	X	4
Raymond	X	X		X	X	X		X	X	X	4
Recovery House	X	X	X	X	X	X			X		4
Sherman	X	X		X	X	X		X	X	X	4
Smith	X	X		X	X	X		X	X	X	4
Staley	X	X		X	X	X	X Kitchens Only	X	X	X	4
Storrs	X	X		X	X	X		X	X	X	4
Taft	X	X		X	X	X		X	X	X	4
Taplin	X	X		X	X	X		X	X	X	4
The Noble Building	X	X Hall-ways Only	X	X	X	X			X		4
Tippit	X	X		X	X	X	X Kitchens Only	X	X	X	4
Triangle Tower 1	X	X	X	X	X	X	X		X	X	4
Triangle Tower 2	X	X	X	X	X	X	X	X	X	X	4
Twin Gables	X	X Hall-ways Only	X	X	X	X			X		4
Tyler	X	X		X	X	X		X	X	X	4

CWRU Police  
216-368-3333

CWRU Police Non-Emergency  
216-368-3300

Enviromental Health and Safety  
216-368-2907

Facilities Services  
216-368-2580

# 2016 ANNUAL FIRE SAFETY REPORT

On-Campus Housing Facilites	Fire Alarm System Monitored by CWRU PD	Smoke Detectors (Fire Alarm Initiating)	Smoke Detectors (Single Station, Non-Fire Alarm Initiating)	Heat Detectors	Audible Fire Alarm Notification System (Bell, Horn, Message, Tones, etc.)	Visual Fire Alarm Notification System (Strobes)	Sprinkler System(Fully Sprinklered unless noted)	Kitchen Hood Suppression System	Fire Extinguishers	Fire Rated Doors, Walls, & Partitions	Number of Fire Drills
Alpha Chi Omega	X	X		X	X	X	X Boiler Room Only	X	X		4
Alpha Phi	X	X		X	X	X	X Basement Only	X	X	X	4
Delta Gamma	X	X		X	X	X		X	X	X	4
Phi Kappa Tau/Sigma Chi	X	X		X	X	X		X	X	X	4
Phi Delta Theta	X	X		X	X	X		X	X	X	4
Phi Kappa Psi/Delta Upsilon	X	X		X	X	X		X	X	X	4
Phi Mu	X	X		X	X	X	X Basement Only	X	X		4
Phi Sigma Rho	X	X		X	X	X			X	X	4
Sigma Nu	X	X		X	X	X		X	X	X	4
Sigma Phi Epsilon/ Beta Theta Pi	X	X		X	X	X		X	X	X	4
Sigma Psi/Kappa Alpha Theta	X	X		X	X	X		X	X	X	4
Theta Chi	X	X	X	X	X	X		X	X		4
Zeta Psi	X	X		X	X	X		X	X	X	4

CWRU Police  
216-368-3333

CWRU Police Non-Emergency  
216-368-3300

Enviromental Health and Safety  
216-368-2907

Facilities Services  
216-368-2580

# 2016 ANNUAL FIRE SAFETY REPORT

## FIRE DRILLS

The Fire and Life Safety Specialist for Case Western Reserve University conducts mandatory fire drills in compliance with the State of Ohio Fire Code for all University on-campus housing.

Fire drills are conducted 4 times a year (2 per semester) for all on-campus housing facilities. During summer sessions and camps; Housing, Residence Life, and Greek Life staff are responsible for educating the occupants on fire evacuation procedures and the location of assembly points due to the constant changing of occupants (i.e. camps, conferences, etc.).

## FIRE SAFETY POLICIES IN ON-CAMPUS HOUSING

All residents should assume responsibility for ensuring fire safety in all residence facilities. Violation of fire safety includes, but is not limited to:

1. Setting a fire
2. Sounding a false alarm, including,
  - a. Falsely reporting fire, bomb threats, serious injury, or any other emergency.
  - b. Intentionally or negligently activating a fire alarm when no fire is present.
  - c. Tampering with a fire alarm pull station or fire suppression system.
3. Using a fire extinguisher in a non-emergency situation.
4. Not evacuating the building during a fire alarm.
5. Tampering with a smoke/particle detector; sprinkler heads, or other fire safety equipment.
6. Using or possessing cooking appliances (except in designated cooking area), hot plates, electrical heaters, halogen lighting sources, extension cords or similar electrical equipment.
7. Leaving cooking items unattended while in use.
8. Using candles, incense, or any open-flamed device.
9. Storage of a motor vehicle of any type within a residence facility.
10. The blocking of any inside or outside exit.
11. Storage of explosive or flammable/combustible materials.
12. Obstructing or blocking fire doors, corridors, hallways or tampering with self-closing mechanisms.

CWRU Police  
216-368-3333

CWRU Police Non-Emergency  
216-368-3300

Environmental Health and Safety  
216-368-2907

Facilities Services  
216-368-2580

# 2016 ANNUAL FIRE SAFETY REPORT

## EVACUATION PROCEDURES

### WHAT YOU SHOULD DO:

1. If you smell or see smoke or fire, activate the fire alarm by pulling an alarm station.  
**WHEN A FIRE ALARM IS ACTIVATED EVACUATION IS MANDATORY!**
2. Do not attempt to fight the fire yourself unless you have been trained in the use of firefighting equipment and it is safe to do so.
3. Notify occupants and help those needing assistance in the immediate area.
4. If fire is present in the immediate area leave all belongings and exit immediately. Otherwise, when an alarm sounds quickly gather essential personal belongings only if it can be done safely (I.D., keys, purse, wallets, etc.) and proceed out of the building. Close doors behind you to help contain the fire.
5. Follow the building's evacuation map and exit quickly via stairwells only; DO NOT attempt to use elevators. Persons with disabilities who are unable to use the stairs should wait in the stairwell for rescue assistance.
6. If you get caught in heavy smoke, take short breaths, crouch down or crawl.
7. If the fire or smoke prevents you from exiting the building, go to a room far away from the fire (preferably a room with a window), shut the door and phone for help (cell phone or room phone). If you cannot reach outside help using technology, open or break a window and signal for help. Placing an object (coat, blanket, towel, etc.) under the door may prevent smoke from intruding while you are awaiting rescue.
8. Once outside proceed to the evacuation assembly area. If emergency responders are not already on the scene call CWRU Police/Security Dispatch with the following information:
  - a. Your name; and
  - b. The exact location of the fire and any other information you may have about the fire.
9. Return to the building only when instructed to do so by emergency personnel.

### WHAT WILL HAPPEN:

1. The dispatcher will notify the appropriate Fire Department and CWRU Police/Security.
2. CWRU Police/Security will respond and coordinate with the responding fire personnel.
3. Once the actual fire or fire alarm situation is resolved, and the building is assessed for safety concerns, CWRU Police/Security or fire department officials may grant permission to re-occupy the building or to enter and retrieve personal belongings.

CWRU Police  
216-368-3333

CWRU Police Non-Emergency  
216-368-3300

Environmental Health and Safety  
216-368-2907

Facilities Services  
216-368-2580



# 2016 ANNUAL FIRE SAFETY REPORT

## FIRE SAFETY EDUCATION/TRAINING

The Environmental Health and Safety Office offers a variety of fire safety education and training programs for the Case Western Reserve University community.

Students receive fire safety and evacuation information during mandatory meetings with their Resident Assistants and during the required fire drills. The students can also receive voluntary fire safety education in a variety of different ways.

During the school year fire safety programs are held at request of the Resident Assistants or Coordinators in the various buildings. These additional fire safety programs include but are not limited to cover:

- Emergency procedures,
- Fire safety issues,
- Prohibited items,
- General prevention tips,
- Cooking fire safety,
- Fire extinguisher usage,
- Additional fire safety programs can also be held at request of a student sponsoring group or organization.

Mandatory fire safety training are provided to Housing, Residence Life, and Greek Life Resident Assistants and Coordinators annually. These trainings cover:

- Emergency procedures,
- Fire safety issues,
- Prohibited items,
- Fire extinguisher usage.

CWRU Police and Security Officers receive mandatory fire safety training.

This training includes:

- fire and alarm response,
- fire protection systems,
- fire extinguisher usage.

Fire safety education and training programs are available for employees for their specific departments at request.

CWRU Police  
216-368-3333

CWRU Police Non-Emergency  
216-368-3300

Enviromental Health and Safety  
216-368-2907

Facilities Services  
216-368-2580

# 2016 ANNUAL FIRE SAFETY REPORT

## FIRE RESPONSE PROCEDURES

In case of a fire or a fire alarm, the following procedure is to be followed. Generally, the **RACE** procedure is used in all university facilities with some variations. Always consult and follow your building-specific Building Emergency Action Plan or posted evacuation procedures.

If you discover a fire or smoke condition: **RACE**

- **R**escue any person in immediate danger.
- **A**larm — pull the fire alarm to alert everyone. Report the incident by Calling CWRU Police & Security at 216-368-3333
- **C**onfine the fire by closing all doors, where possible. Turn off electric and gas equipment in your area as you evacuate, if possible.
  - Extinguish a small fire using a fire extinguisher, if trained and if it safe to do so.
- **E**vacuate using the nearest stair exit. Follow the exit signs.
  - Report any discharged fire extinguishers and any first-hand information that you might have to CWRU Police & Security.

If you hear or see a fire alarm signal or announcement:

- Follow the emergency procedure for your building and area.
- Follow the announcements on the public address system or instructions of your area floor captains.
- Evacuate or stand by and stay alert as instructed on the public address system.
- Follow the EXIT signs. Use Stairs. Do Not Use Elevators. Walk at a normal pace.
- Wait outside in the designated assembly areas at least 50-feet or more away from the building as instructed.
- Re-enter the building only after the “All Clear” is announced.

### REMEMBER THE FIRE EXTINGUISHER KEY WORDS

#### P.A.S.S. AND A.B.C.

#### P.A.S.S.

- **P**ull the pin
- **A**im at the base of the fire
- **S**queeze the handle
- **S**weep side to side

#### A.B.C.

- Class A:** Wood, Paper, Plastic
- Class B:** Oil, Grease, Flammables
- Class C:** Electrical



CWRU Police  
216-368-3333

CWRU Police Non-Emergency  
216-368-3300

Environmental Health and Safety  
216-368-2907

Facilities Services  
216-368-2580

# 2016 ANNUAL FIRE SAFETY REPORT

## FIRE RESPONSE PROCEDURES

### FIRE EXTINGUISHERS:

Portable fire extinguishers of appropriate type and size are provided as required in all areas. Extinguishers are inspected, tested, maintained and documented as required by the Ohio Fire Code.

Fire extinguishers are provided throughout all university buildings for the use by trained students, faculty, and staff. Please contact the EHS office, Roy Evans, at 216-368-0021 for upcoming training opportunities.

Fire doubles in size every 30 seconds so knowing how to properly and safely extinguish a fire is a huge advantage. An average extinguisher discharges completely in less than 1 minute. Therefore, it is important that you know at least two locations for extinguishers! Under the Ohio Fire Code there is a 75 foot travel distance between extinguishers.

### SAFETY PRECAUTIONS:

- Before using a fire extinguisher, ALWAYS pull the building fire alarm first.
- Do not attempt to use a fire extinguisher if the fire is large and spreading. Use it only for small fire-defense (e.g., a waste paper basket).
- Do not use the fire extinguisher if the lock pin is tampered, the cylinder is damaged, or if the pressure gauge pointer is in the 'RECHARGE' zone.
- Do not use the fire extinguisher if you are not trained and confident about using it.
- Read the extinguisher label to check if it is of right type for the kind of fire at hand. The label indicates one or more of the following fire classes and symbols, and specific applications for which it can be used.
- Protect yourself at all times:
  - Never block your escape route.
  - Stay low. Avoid breathing the heated smoke and fumes.
  - If the fire cannot be controlled, get out immediately to safety.



CWRU Police  
216-368-3333

CWRU Police Non-Emergency  
216-368-3300

Environmental Health and Safety  
216-368-2907

Facilities Services  
216-368-2580

# 2016 ANNUAL FIRE SAFETY REPORT

## FIRE RESPONSE PROCEDURES

### HOW TO USE A FIRE EXTINGUISHER:

- Make sure you are using the proper extinguisher for the type of fire.
- Position yourself at a safe distance from the fire (e.g., 7-10 feet)

Remember the 'PASS' Procedure:

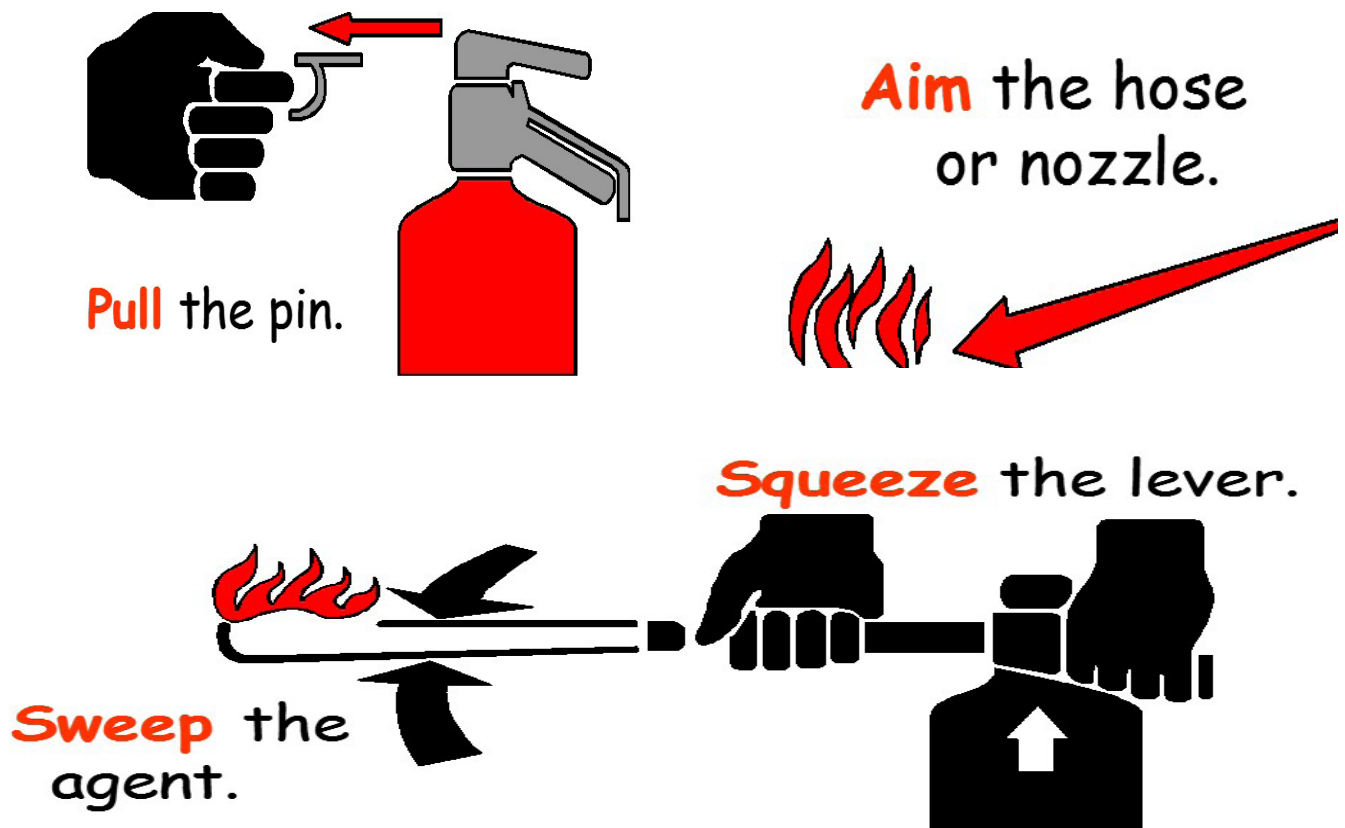
- Pull the pin: This unlocks the operating lever and allows you to discharge the extinguisher.
- Aim low: Point the extinguisher nozzle/horn/hose at the base of the fire.
- Squeeze and hold: the handle to discharge the extinguishing agent without any interruption.
- Sweep slowly from side to side as you hold the handle squeezed.
  - o Move closer carefully as the fire gets smaller and as you continue spraying.

Watch the fire area until it has completely cooled down.

Report the discharged extinguisher to the EHS office, Roy Evans, at 216-368-0021.

Always make sure the fire alarm is currently activated before attempting to extinguish.

Also make sure you have a clear escape path before attempting to extinguish.



CWRU Police  
216-368-3333

CWRU Police Non-Emergency  
216-368-3300

Environmental Health and Safety  
216-368-2907

Facilities Services  
216-368-2580

# 2016 ANNUAL FIRE SAFETY REPORT

## FIRE PROTECTION SYSTEMS

### FIRE ALARM SYSTEMS:

Fire alarm systems are located in each of CWRU's buildings. Many of these systems go unnoticed day in and day out. However, in times of emergency they are critical.

Smoke/heat detectors detect smoke or fire and automatically activate the buildings fire alarm system.

Pull stations are located throughout the buildings in main corridors and near the stairwells. In the case of fire or smoke, always pull the closest pull station, regardless of the size of the fire!

### SPRINKLER SYSTEMS:

Sprinklers are installed in many building areas to protect both life and property. In the case of a fire, each head detects temperature in the room and begins spraying water as soon as the room temperature exceeds a pre-determined value. Not all buildings or areas are equipped with sprinkler systems. Hazardous locations, storage areas and basement levels are generally protected with sprinklers as required by the Ohio Fire Code.

As you store materials and boxes in your area, always maintain a minimum of 18 inches of clearance between the ceiling and the storage. This clearance allows the sprinkler head to spray water uniformly and extinguish the fire effectively. If you notice any unsafe conditions such as a sprinkler head that is painted over or heavily laden with dust, blocked in any other manner or broken, promptly report this to the EHS Office, Roy Evans, at 216-368-0021.

### FIRE AND SMOKE DOORS:

University buildings are equipped with fire rated doors and smoke-barrier doors. These doors prevent smoke and heat from traveling up stairwells and along corridors. Please do not prop any fire/smoke doors unless they have approved hardware, such as a magnetic fire door release.



CWRU Police  
216-368-3333

CWRU Police Non-Emergency  
216-368-3300

Environmental Health and Safety  
216-368-2907

Facilities Services  
216-368-2580



# 2016 ANNUAL FIRE SAFETY REPORT

## FIRE CODE VIOLATIONS

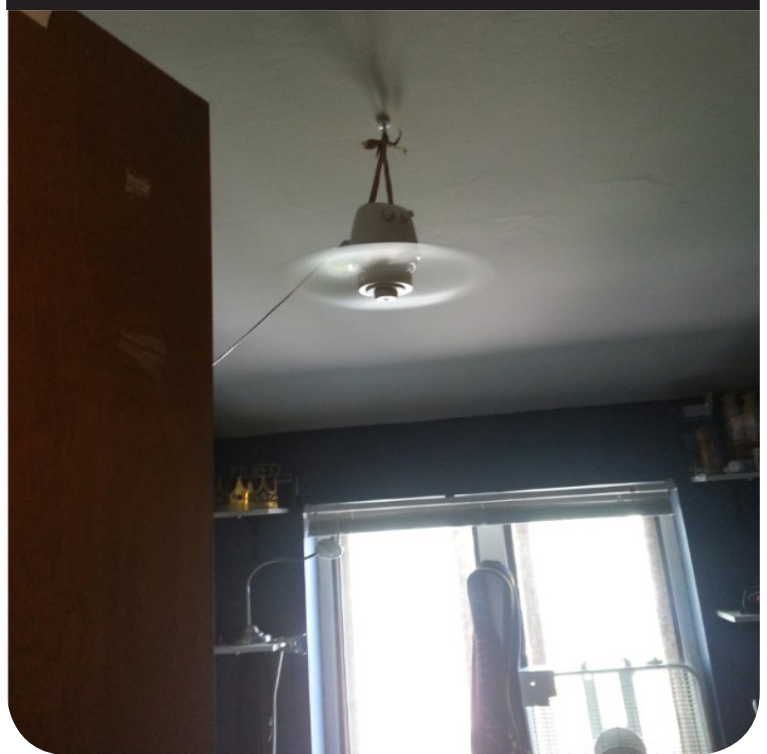
**Dirty Sprinkler Head**



**Covered Smoke Detector**



**Items Hanging from Ceiling**



**Missing Extinguisher**



CWRU Police  
216-368-3333

CWRU Police Non-Emergency  
216-368-3300

Environmental Health and Safety  
216-368-2907

Facilities Services  
216-368-2580

# 2016 ANNUAL FIRE SAFETY REPORT

## FIRE CODE VIOLATIONS

**Stairwell Storage**



**Hallway Storage**



**Covered Smoke Detector**



**Propped Fire Door**



CWRU Police  
216-368-3333

CWRU Police Non-Emergency  
216-368-3300

Environmental Health and Safety  
216-368-2907

Facilities Services  
216-368-2580



# 2016 ANNUAL FIRE SAFETY REPORT

## FIRE CODE VIOLATIONS

Woodshop found in Residence



Covering of Lights



Blocked Exit Door



CWRU Police  
216-368-3333

CWRU Police Non-Emergency  
216-368-3300

Environmental Health and Safety  
216-368-2907

Facilities Services  
216-368-2580