



CASE WESTERN RESERVE  
UNIVERSITY EST. 1826

# 2018 Annual Fire Safety Report



# 2018 ANNUAL FIRE SAFETY REPORT

## Overview:

The information contained in this report was compiled and completed in-compliance with the 2008 Higher Education Opportunity Act (HEOA). The Higher Education Opportunity Act was created by the Department of Education to address several issues on college campuses, including fire safety in on-campus housing. This report does not include Case Western Reserve University's Annual Security Report. To view the Annual Security Report you may go to: <http://www.cde.edu/findadmin.edu/finandmin/security/secrpt18.pdf>.

The HEOA requires Universities to maintain a fire log listing all fires that have occurred in their on-campus housing. Case Western Reserve University's fire log is available online at [www.case.edu/ehs/safety/campus-fire-log/](http://www.case.edu/ehs/safety/campus-fire-log/). The HEOA also requires the publishing of an annual fire safety report that provides information on the following items: statistics for fires that occurred in on-campus housing facilities; a description of the fire safety systems found in the residence hall facilities; number of regular supervised fire drills; policies or rules on potable electrical appliances, smoking, and open flames in student housing facilities; procedures for student housing evacuation in the case of a fire; policies on fire safety education and training programs provided to students and employees should report that a fire has occurred; and plans for future improvements in fire safety. The Environment Health and Safety Department creates and maintains the fire log and the annual fire safety report.

CWRU Police (216) 368-3333	CWRU Non-Emergency (216) 368-3300	EHS Department (216) 368-2907	Facility Services (216) 369-2580
-------------------------------	--------------------------------------	----------------------------------	-------------------------------------

# 2018 ANNUAL FIRE SAFETY REPORT

## Definitions:

**Audible Fire Alarm Notification Application** - A fire alarm system is a component that alerts by the sense of hearing (i.e. bell, horn, message, tones, etc.).

**Cause of Fire** - The factor(s) that can cause escalation of a fire. The causal factor may be, but is not limited to, the result of an intention or unintentional action, mechanical failure, or act of nature (Higher Education Opportunity Act).

**Fire** - Any instance of open flame or other burning in a place not intended to contain the burning or in an uncontrolled manner (Higher Education Opportunity Act).

**Fire Alarm System** - The building's fire alarm system transmits a signal to the CWRU Police Department's Dispatch Center, which is constantly attended 24 hours a day 7 days a week. Some fire alarm systems will provide the exact location to the dispatcher of the activated device in the building. The Fire Alarm System helps the Police and Fire Department determine the exact location before they arrive.

**Fire Drill** - This is a supervised practice for a mandatory evacuation from a building that is on fire.

**Fire Extinguisher** - A fire extinguisher is a portable device containing a specialized agent that can be used to extinguish a fire. Fire Extinguishers are installed throughout the campus buildings in accordance with the Ohio Fire Code.

### **Fire Related Doors, Walls, & Partitions (Passive Fire Protection Systems) -**

Passive Fire Protection Systems are components of a building designed to have a certain degree of fire resistance. These components are designed to contain the spread of smoke and fire gases, and prevent the spread of them to a certain area for a reasonable period of time. Fire rated doors, walls, and partitions are installed in areas to protect the evacuation of the occupants (i.e. stairwells), separate a specific area from another (i.e. mechanical room, student rooms, etc.), or separate adjoining buildings.

**Fire Related Injury** - Any instance in which a person is injured as a result of a fire, including an injury sustained from a natural or accidental cause, while involved in fire control, attempting rescue, or escaping from the dangers of the fire. The term "person" may include students, employees, visitors, firefighters, or any other individuals (Higher Education Opportunity Act).

**Fire Related Death** - Any instance in which a person (1) is killed as a result of a fire, including death resulting from a natural or accidental cause while involve in fire control, attempting rescue, or escaping from the dangers of a fire; or (2) Dies within one year of injuries sustained as a result of the fire (Higher Education Opportunity Act).

**Heat Detectors** - Heat Detectors are devices that are only activated by heat. They are used in areas where smoke or steam is likely to be present (i.e. kitchens, bathrooms, and mechanical rooms).

CWRU Police (216) 368-3333	CWRU Non-Emergency (216) 368-3300	EHS Department (216) 368-2907	Facility Services (216) 369-2580
-------------------------------	--------------------------------------	----------------------------------	-------------------------------------

# 2018 ANNUAL FIRE SAFETY REPORT

## Definitions:

**Intentional Fire (Arson)** - An intentional fire that is ignited under circumstances in which the person knows that the fire should not be ignited (NFPA 921). (i.e., knowingly starting a fire to burn a bulletin board).

**Kitchen Hood Suppression System** - A specially designed Fire Protection System to extinguish fires that occur on a kitchen stove. Upon activation of the system it will release the suppression agent and activate the building's fire alarm system. Kitchen hood suppression systems can be found in the common cooking areas (if available) in the Residence Halls.

**Smoke Detectors** - A device that detects visible or invisible particles of combustion (NFPA 72).

**Smoke Detectors (Fire Alarm Initiating)** - Smoke detectors automatically trigger the buildings fire alarm system.

**Smoke Detectors (Single station, battery operated)** - Smoke detectors are not connected to the buildings fire alarm system and only sound locally.

**Sprinkler System** - A System of piping that is designed to deliver water on a fire to control or extinguish it. The sprinkler heads in the residential facilities are only activated by heat, not smoke or a pull station

**Undetermined** - A cause classification for fires whenever the cause cannot be proven to an acceptable level of certainty (NFPA921).

**Unintentional Fire (Accidental)** - A fire that does not involve an intentional human act to ignite or spread fire into an area where the fire should not be (example: cooking related fire).

**Value of Property Damage** - The estimated loss and value of the structure and contents in terms of the cost of replacement in like kind and quantity. This estimate should include contents damaged by fire, and related damages caused by smoke, water, and overhaul; however, it's not include and indirect loss, such as business interruption (Higher Education Opportunity Act).

**Visual Fire Alarm Notification Appliance** - A Visual Fire Alarm Notification Appliance is a component system that alerts fires by the detection of sight (i.e. strobe lights).

CWRU Police (216) 368-3333	CWRU Non-Emergency (216) 368-3300	EHS Department (216) 368-2907	Facility Services (216) 369-2580
-------------------------------	--------------------------------------	----------------------------------	-------------------------------------



# 2018 ANNUAL FIRE SAFETY REPORT

## Fire Policies:

The following policies apply to all University buildings, including on-campus student housing facilities.

### Smoking

- Smoking is prohibited within all University buildings and student housing facilities and school property.
- CWRU is now tobacco free, see the [policy](#).

### Open Flames

- Open flames, candles, candle warmers, or incense are prohibited in residence halls, academic, and administrative buildings.

### Electrical Safety

- Ensure electrical circuits are not overloaded.
- Ensure all electrical appliances are UL rated, and do not overload circuits.
- Ensure extension cords are UL rated, do not extend into other rooms through doors, windows or stairwells, and are not used as permanent sources of power.
- Ensure Festive lighting is UL rated.

### Fire Safety Systems

- Do not tamper with fire protection systems. Ensure they are not obstructed from view or assess.
- All alarm systems must be kept free of storage materials and remain readily accessible.
- Fire and smoke barrier doors must be closed at all times.
- Storage of items may not be within 24 inches of ceilings, block exits, stairwells, extinguishers, or fire alarm pull stations in any building on campus.

### Holiday Decorations

- Holiday decorations must not impede fire safety devices such as exit signs, sprinkler systems, smoke alarms, strobe lights or any other device.
- Live Christmas trees and wreaths are prohibited.

CWRU Police (216) 368-3333	CWRU Non-Emergency (216) 368-3300	EHS Department (216) 368-2907	Facility Services (216) 369-2580
-------------------------------	--------------------------------------	----------------------------------	-------------------------------------

# 2018 ANNUAL FIRE SAFETY REPORT

## Fire Policies:

### ON CAMPUS HOUSING PROHIBITED ITEMS

The following policies apply for all University on-campus student housing facilities.

- Hot plates or similar items with an open heating element.
  - Upholstered furniture (unless certified flame retardant).
  - Curtains, draperies, hanging, and other materials suspended from walls or ceiling unless
    - a). Certified flame retardant.
    - b). Resident must be able to provide proof of fire retardant.
  - Space heaters
  - Refrigerators more than 4 c.u. ft.
  - Any equipment that places an extraordinary load on the electrical system (i.e. electrical heaters, air conditioners).
  - Halogen lighting sources.
  - Extension cords or similar electrical equipment.
  - Un-fused surge protectors.
  - Storage of motor vehicles within a residential facility.
  - Flammable/combustible liquids & gases.
  - Explosives/Fireworks
  - Air rifles and guns.
  - Gunpowder.
  - Knives.
  - In general, dogs, cats, and ferrets unless approved as service or support animals with Disability Services
- Note:** (All others must complete a Pet Registration through Housing).

CWRU Police (216) 368-3333	CWRU Non-Emergency (216) 368-3300	EHS Department (216) 368-2907	Facility Services (216) 369-2580
-------------------------------	--------------------------------------	----------------------------------	-------------------------------------

# 2018 ANNUAL FIRE SAFETY REPORT

## Fire Policies:

### CAMPUS BUILDING EVACUATIONS

In addition to adhering to fire policies students, faculty, and staff must also understand and practice policies regarding activities during a fire alarm at Case Western Reserve University.

If a student, faculty, or staff member discovers smoke or an actual fire, they should immediately pull the nearest fire alarm and evacuate the building. Upon exit of the building they should dial (216) 368-3333 to report the fire.

All building occupants should become familiar with posted evacuation routes and procedures for the buildings. These are typically located near elevators, stairwells, and exits. Any student residing in or present in any university residence hall must evacuate the building when a fire alarm sounds using stairwells and exits.

All building occupants should know and memorize two exits from the building, and understand that an evacuation may require you to evacuate a smoke filled area. In the case of smoke stay low and check all doors before proceeding to an exit.

Windows may also be an exit option in some buildings. Should you need to exit from a window, verbally summon the assistance of a first responder before attempting to exit a building from a window.

Upon exiting the building occupants must move to a location away from the building and fire equipment until notified that the building is clear to be re-occupied by first responders.

After evacuating, if you know of an occupant that may still be in the impacted building, provide that information to first responders by giving the name and location of the individual so they may assist them.

CWRU Police (216) 368-3333	CWRU Non-Emergency (216) 368-3300	EHS Department (216) 368-2907	Facility Services (216) 369-2580
-------------------------------	--------------------------------------	----------------------------------	-------------------------------------

# 2018 ANNUAL FIRE SAFETY REPORT

## Fire Statistics and Fire Log

Case Western Reserve's Department of Environmental Health and Safety maintains a written Fire Log that records required incident information concerning fires that occur in on-campus student housing facilities.

In addition to the Fire Log, the university is required to provide an annual report to the campus community on the fires recorded in the Fire Log. The Fire Statistics section is intended to satisfy this requirement and contains information about all fire recorded in the Fire Log.

The Fire Log provides the date reported, nature, date the fire occurred and time and general location of each fire. The University is required to update the Fire Log within two business days of receiving the information about a fire in an on-campus housing facility.

The Fire Log will be open to public inspection for the most recent 60-day period during normal business hours. Any portion of the Fire Log older than 60 days will be made available within two business days of a request for public inspection.

The Fire Log may be viewed online by visiting the EHS website at:  
<https://case.edu/ehs/safety-subject/fire-safety/annual-fire-safety-report>

To report that a fire has occurred on campus (non-emergency) so that it may be included in the Campus Fire Log, please contact the Fire and Life Safety Specialist for Case Western Reserve University, at (216) 368-0021 or [joenik@case.edu](mailto:joenik@case.edu).

CWRU Police (216) 368-3333	CWRU Non-Emergency (216) 368-3300	EHS Department (216) 368-2907	Facility Services (216) 369-2580
-------------------------------	--------------------------------------	----------------------------------	-------------------------------------



# 2018 ANNUAL FIRE SAFETY REPORT

## Fire Statistics and Fire Log

2017 ON-CAMPUS HOUSING					
Residential Facilities Building Name: Address	Number of Fires	Cause of Fire	Number of Fire Related Injuries	Number of Fire Related Deaths	Value of Property Damaged
<b>1680 Building:</b> 1680 E. 117 <sup>th</sup> St.	0	N/A	N/A	N/A	N/A
1727 E. 116 <sup>th</sup> St.	0	N/A	N/A	N/A	N/A
1719 E. 116 <sup>th</sup> St.	0	N/A	N/A	N/A	N/A
<b>Alumni House:</b> 2345 Murray Hill Dr.	0	N/A	N/A	N/A	N/A
<b>Clarke Tower:</b> 1596 E. 115 <sup>th</sup> St.	0	N/A	N/A	N/A	N/A
<b>Cutler House:</b> 1616 E. 115 <sup>th</sup> St.	0	N/A	N/A	N/A	N/A
<b>Cutter House:</b> 11301 Juniper Rd.	0	N/A	N/A	N/A	N/A
<b>Glaser House:</b> 11900 Carlton Rd.	0	N/A	N/A	N/A	N/A
<b>Hitchcock House:</b> 1626 E. 115 <sup>th</sup> St.	0	N/A	N/A	N/A	N/A
<b>Howe House:</b> 2335 Murray Hill Rd.	0	N/A	N/A	N/A	N/A
<b>Kusch House:</b> 11904 Carlton Rd.	0	N/A	N/A	N/A	N/A
<b>Michelson House:</b> 11896 Carlton Rd.	0	N/A	N/A	N/A	N/A
<b>NRV House 1:</b> 1672 E. 117 <sup>th</sup> St.	0	N/A	N/A	N/A	N/A
<b>NRV House 2:</b> 1697 E. 116 <sup>th</sup> St.	0	N/A	N/A	N/A	N/A
<b>NRV House 3:</b> 1681 E. 116 <sup>th</sup> St.	0	N/A	N/A	N/A	N/A
<b>NRV House 3A:</b> 1677 E. 115 <sup>th</sup> St.	0	N/A	N/A	N/A	N/A
<b>NRV House 4:</b> 1665 E. 115 <sup>th</sup> St.	0	N/A	N/A	N/A	N/A
<b>NRV House 5:</b> 1641 E. 115 <sup>th</sup> St.	0	N/A	N/A	N/A	N/A
<b>NRV House 6:</b> 1623 E. 115 <sup>th</sup> St.	0	N/A	N/A	N/A	N/A
<b>NRV House 7:</b> 1611 E. 115 <sup>th</sup> St.	0	N/A	N/A	N/A	N/A
<b>NRV House 8:</b> 1576 E. 115 <sup>th</sup> (Tubbs Jones)	0	N/A	N/A	N/A	N/A
<b>Norton House:</b> 11443 Juniper Rd.	0	N/A	N/A	N/A	N/A
<b>Pierce House:</b> 1636 E. 115 <sup>th</sup> St.	0	N/A	N/A	N/A	N/A
<b>Raymond House:</b> 11447 Juniper Rd.	0	N/A	N/A	N/A	N/A
<b>Recovery House:</b> 2272 Murray Hill Rd.	0	N/A	N/A	N/A	N/A
<b>Sherman House:</b> 11439 Juniper Rd.	0	N/A	N/A	N/A	N/A
<b>Smith House:</b> 11311 Juniper Rd.	0	N/A	N/A	N/A	N/A
<b>Staley House:</b> 2365 Murray Hill Rd.	0	N/A	N/A	N/A	N/A
<b>Storrs House:</b> 1615 Mistletoe Dr.	0	N/A	N/A	N/A	N/A
<b>Taft House:</b> 11341 Juniper Rd.	0	N/A	N/A	N/A	N/A
<b>Taplin House:</b> 11331 Juniper Rd.	0	N/A	N/A	N/A	N/A
<b>The Noble Building:</b> 1720-1728 E. 116 <sup>th</sup> St.	0	N/A	N/A	N/A	N/A
<b>Tippit House:</b> 2355 Murray Hill Rd.	0	N/A	N/A	N/A	N/A
<b>Triangle Tower 2:</b> 11477 Mayfield	0	N/A	N/A	N/A	N/A
<b>Twin Gables:</b> 1715 E. 115 <sup>th</sup> St.	0	N/A	N/A	N/A	N/A

CWRU Police (216) 368-3333	CWRU Non-Emergency (216) 368-3300	EHS Department (216) 368-2907	Facility Services (216) 369-2580
-------------------------------	--------------------------------------	----------------------------------	-------------------------------------

# 2018 ANNUAL FIRE SAFETY REPORT

## 2017 ON-CAMPUS HOUSING

Residential Facilities Building Name: Address	Number of Fires	Cause of Fire	Number of Fire Related Injuries	Number of Fire Related Deaths	Value of Property Damaged
<b>Tyler House:</b> 11435 Juniper Rd.	0	N/A	N/A	N/A	N/A
<b>Alpha Chi Omega:</b> 11421 Bellflower Rd.	0	N/A	N/A	N/A	N/A
<b>Alpha Phi:</b> 11116 Magnolia Rd.	0	N/A	N/A	N/A	N/A
<b>Sigma Phi Epsilon:</b> 2255 Murray Hill Rd.	0	N/A	N/A	N/A	N/A
<b>Beta Theta Pi:</b> 2253 Murray Hill Rd.	0	N/A	N/A	N/A	N/A
<b>Delta Gamma:</b> 2265 Murray Hill Rd.	0	N/A	N/A	N/A	N/A
<b>Phi Kappa Tau:</b> 11909 Carlton Rd.	0	N/A	N/A	N/A	N/A
<b>Sigma Chi:</b> 11911 Carlton Rd.	0	N/A	N/A	N/A	N/A
<b>Phi Delta Theta:</b> 2225 Murray Hill Rd.	0	N/A	N/A	N/A	N/A
<b>Phi Kappa Psi:</b> 11915 Carlton Rd.	0	N/A	N/A	N/A	N/A
<b>Delta Kappa Upsilon:</b> 11913 Carlton Rd.	0	N/A	N/A	N/A	N/A
<b>Phi Mu:</b> 11418 Bellflower Rd.	0	N/A	N/A	N/A	N/A
<b>Phi Sigma Rho:</b> 11901 Carlton Rd.	0	N/A	N/A	N/A	N/A
<b>Sigma Nu:</b> 2235 Murray Hill Rd.	0	N/A	N/A	N/A	N/A
<b>Sigma Psi:</b> 11921 Carlton Rd.	0	N/A	N/A	N/A	N/A
<b>Kappa Alpha Theta:</b> 11923 Carlton Rd.	0	N/A	N/A	N/A	N/A
<b>Theta Chi:</b> 11136 Magnolia Dr.	0	N/A	N/A	N/A	N/A
<b>Zeta Psi:</b> 11925 Carlton Rd.	0	N/A	N/A	N/A	N/A

CWRU Police (216) 368-3333	CWRU Non-Emergency (216) 368-3300	EHS Department (216) 368-2907	Facility Services (216) 369-2580
-------------------------------	--------------------------------------	----------------------------------	-------------------------------------

# 2018 ANNUAL FIRE SAFETY REPORT

## Fire Statistics and Fire Log

2016 ON-CAMPUS HOUSING					
Residential Facilities Building Name: Address	Number of Fires	Cause of Fire	Number of Fire Related Injuries	Number of Fire Related Deaths	Value of Property Damaged
<b>1680 Building:</b> 1680 E. 117 <sup>th</sup> St.	0	N/A	N/A	N/A	N/A
1727 E. 116 <sup>th</sup> St.	0	N/A	N/A	N/A	N/A
1719 E. 116 <sup>th</sup> St.	0	N/A	N/A	N/A	N/A
<b>Alumni House:</b> 2345 Murray Hill Dr.	1	Computer power supply melted	0	0	\$99.00 - \$1,000.00
<b>Clarke Tower:</b> 1596 E. 115 <sup>th</sup> St.	0	N/A	N/A	N/A	N/A
<b>Cutler House:</b> 1616 E. 115 <sup>th</sup> St.	0	N/A	N/A	N/A	N/A
<b>Cutter House:</b> 11301 Juniper Rd.	0	N/A	N/A	N/A	N/A
<b>Glaser House:</b> 11900 Carlton Rd.	0	N/A	N/A	N/A	N/A
<b>Hitchcock House:</b> 1626 E. 115 <sup>th</sup> St.	0	N/A	N/A	N/A	N/A
<b>Howe House:</b> 2335 Murray Hill Rd.	0	N/A	N/A	N/A	N/A
<b>Kusch House:</b> 11904 Carlton Rd.	0	N/A	N/A	N/A	N/A
<b>Michelson House:</b> 11896 Carlton Rd.	0	N/A	N/A	N/A	N/A
<b>NRV House 1:</b> 1672 E. 117 <sup>th</sup> St.	0	N/A	N/A	N/A	N/A
<b>NRV House 2:</b> 1697 E. 116 <sup>th</sup> St.	0	N/A	N/A	N/A	N/A
<b>NRV House 3:</b> 1681 E. 116 <sup>th</sup> St.	0	N/A	N/A	N/A	N/A
<b>NRV House 3A:</b> 1677 E. 115 <sup>th</sup> St.	0	N/A	N/A	N/A	N/A
<b>NRV House 4:</b> 1665 E. 115 <sup>th</sup> St.	0	N/A	N/A	N/A	N/A
<b>NRV House 5:</b> 1641 E. 115 <sup>th</sup> St.	0	N/A	N/A	N/A	N/A
<b>NRV House 6:</b> 1623 E. 115 <sup>th</sup> St.	0	N/A	N/A	N/A	N/A
<b>NRV House 7:</b> 1611 E. 115 <sup>th</sup> St.	0	N/A	N/A	N/A	N/A
<b>NEW NRV House 8:</b> 1576 E. 115 <sup>th</sup> St. (Tubbs Jones)	0	N/A	N/A	N/A	N/A
<b>Norton House:</b> 11443 Juniper Rd.	0	N/A	N/A	N/A	N/A
<b>Pierce House:</b> 1636 E. 115 <sup>th</sup> St.	0	N/A	N/A	N/A	N/A
<b>Raymond House:</b> 11447 Juniper Rd.	0	N/A	N/A	N/A	N/A
<b>Recovery House:</b> 2272 Murray Hill Rd.	0	N/A	N/A	N/A	N/A

CWRU Police (216) 368-3333	CWRU Non-Emergency (216) 368-3300	EHS Department (216) 368-2907	Facility Services (216) 369-2580
-------------------------------	--------------------------------------	----------------------------------	-------------------------------------

# 2018 ANNUAL FIRE SAFETY REPORT

## 2016 ON-CAMPUS HOUSING

Residential Facilities Building Name: Address	Number of Fires	Cause of Fire	Number of Fire Related Injuries	Number of Fire Related Deaths	Value of Property Damaged
<b>Sherman House:</b> 11439 Juniper Rd.	0	N/A	N/A	N/A	N/A
<b>Smith House:</b> 11311 Juniper Rd.	0	N/A	N/A	N/A	N/A
<b>Staley House:</b> 2365 Murray Hill Rd.	0	N/A	N/A	N/A	N/A
<b>Storrs House:</b> 1615 Mistletoe Dr.	0	N/A	N/A	N/A	N/A
<b>Taft House:</b> 11341 Juniper Rd.	1	Cigarette in trashcan	0	0	\$0 - \$99.00
<b>Taplin House:</b> 11331 Juniper Rd.	0	N/A	N/A	N/A	N/A
<b>The Noble Building:</b> 1720-1728 E. 116 <sup>th</sup> St.	0	N/A	N/A	N/A	N/A
<b>Tippit House:</b> 2355 Murray Hill Rd.	0	N/A	N/A	N/A	N/A
<b>Triangle Tower 2:</b> 11477 Mayfield	0	N/A	N/A	N/A	N/A
<b>Twin Gables:</b> 1715 E. 115 <sup>th</sup> St.	0	N/A	N/A	N/A	N/A
<b>Tyler House:</b> 11435 Juniper Rd.	0	N/A	N/A	N/A	N/A
<b>Alpha Chi Omega:</b> 11421 Bellflower Rd.	0	N/A	N/A	N/A	N/A
<b>Alpha Phi:</b> 11116 Magnolia Rd.	0	N/A	N/A	N/A	N/A
<b>Sigma Phi Epsilon:</b> 2255 Murray Hill Rd.	0	N/A	N/A	N/A	N/A
<b>Beta Theta Pi:</b> 2253 Murray Hill Rd.	0	N/A	N/A	N/A	N/A
<b>Delta Gamma:</b> 2265 Murray Hill Rd.	0	N/A	N/A	N/A	N/A
<b>Phi Kappa Tau:</b> 11909 Carlton Rd.	0	N/A	N/A	N/A	N/A
<b>Sigma Chi:</b> 11911 Carlton Rd.	0	N/A	N/A	N/A	N/A
<b>Phi Delta Theta:</b> 2225 Murray Hill Rd.	0	N/A	N/A	N/A	N/A
<b>Phi Kappa Psi:</b> 11915 Carlton Rd.	0	N/A	N/A	N/A	N/A
<b>Delta Kappa Upsilon:</b> 11913 Carlton Rd.	0	N/A	N/A	N/A	N/A
<b>Phi Mu:</b> 11418 Bellflower Rd.	0	N/A	N/A	N/A	N/A
<b>Phi Sigma Rho:</b> 11901 Carlton Rd.	0	N/A	N/A	N/A	N/A
<b>Sigma Nu:</b> 2235 Murray Hill Rd.	0	N/A	N/A	N/A	N/A
<b>Sigma Psi:</b> 11921 Carlton Rd.	0	N/A	N/A	N/A	N/A
<b>Kappa Alpha Theta:</b> 11923 Carlton Rd.	0	N/A	N/A	N/A	N/A
<b>Theta Chi:</b> 11136 Magnolia Dr.	0	N/A	N/A	N/A	N/A
<b>Zeta Psi:</b> 11925 Carlton Rd.	1	Ritual performed	0	0	\$99.00 - \$1,000.00

CWRU Police (216) 368-3333	CWRU Non-Emergency (216) 368-3300	EHS Department (216) 368-2907	Facility Services (216) 369-2580
-------------------------------	--------------------------------------	----------------------------------	-------------------------------------

# 2018 ANNUAL FIRE SAFETY REPORT

## Fire Statistics and Fire Log

2015 ON-CAMPUS HOUSING					
Residential Facilities Building Name: Address	Number of Fires	Cause of Fire	Number of Fire Related Injuries	Number of Fire Related Deaths	Value of Property Damaged
<b>1680 Building:</b> 1680 E. 117 <sup>th</sup> St.	0	N/A	N/A	N/A	N/A
1727 E. 116 <sup>th</sup> St.	0	N/A	N/A	N/A	N/A
1719 E. 116 <sup>th</sup> St.	0	N/A	N/A	N/A	N/A
<b>Alumni House:</b> 2345 Murray Hill Dr.	0	N/A	N/A	N/A	N/A
<b>Clarke Tower:</b> 1596 E. 115 <sup>th</sup> St.	0	N/A	N/A	N/A	N/A
<b>Cutler House:</b> 1616 E. 115 <sup>th</sup> St.	0	N/A	N/A	N/A	N/A
<b>Cutter House:</b> 11301 Juniper Rd.	0	N/A	N/A	N/A	N/A
<b>Glaser House:</b> 11900 Carlton Rd.	0	N/A	N/A	N/A	N/A
<b>Hitchcock House:</b> 1626 E. 115 <sup>th</sup> St.	0	N/A	N/A	N/A	N/A
<b>Howe House:</b> 2335 Murray Hill Rd.	0	N/A	N/A	N/A	N/A
<b>Kusch House:</b> 11904 Carlton Rd.	0	N/A	N/A	N/A	N/A
<b>Michelson House:</b> 11896 Carlton Rd.	0	N/A	N/A	N/A	N/A
<b>NRV House 1:</b> 1672 E. 117 <sup>th</sup> St.	0	N/A	N/A	N/A	N/A
<b>NRV House 2:</b> 1697 E. 116 <sup>th</sup> St.	0	N/A	N/A	N/A	N/A
<b>NRV House 3:</b> 1681 E. 116 <sup>th</sup> St.	0	N/A	N/A	N/A	N/A
<b>NRV House 3A:</b> 1677 E. 115 <sup>th</sup> St.	0	N/A	N/A	N/A	N/A
<b>NRV House 4:</b> 1665 E. 115 <sup>th</sup> St.	1	Unattended cooking	0	0	\$99.00 - \$1,000.00
<b>NRV House 5:</b> 1641 E. 115 <sup>th</sup> St.	0	N/A	N/A	N/A	N/A
<b>NRV House 6:</b> 1623 E. 115 <sup>th</sup> St.	0	N/A	N/A	N/A	N/A
<b>NRV House 7:</b> 1611 E. 115 <sup>th</sup> St.	0	N/A	N/A	N/A	N/A
<b>Norton House:</b> 11443 Juniper Rd.	0	N/A	N/A	N/A	N/A
<b>Pierce House:</b> 1636 E. 115 <sup>th</sup> St.	0	N/A	N/A	N/A	N/A
<b>Raymond House:</b> 11447 Juniper Rd.	0	N/A	N/A	N/A	N/A
<b>Recovery House:</b> 2272 Murray Hill Rd.	0	N/A	N/A	N/A	N/A
<b>Sherman House:</b> 11439 Juniper Rd.	0	N/A	N/A	N/A	N/A

CWRU Police (216) 368-3333	CWRU Non-Emergency (216) 368-3300	EHS Department (216) 368-2907	Facility Services (216) 369-2580
-------------------------------	--------------------------------------	----------------------------------	-------------------------------------



# 2018 ANNUAL FIRE SAFETY REPORT

## 2015 ON-CAMPUS HOUSING

Residential Facilities Building Name: Address	Number of Fires	Cause of Fire	Number of Fire Related Injuries	Number of Fire Related Deaths	Value of Property Damaged
<b>Smith House:</b> 11311 Juniper Rd.	0	N/A	N/A	N/A	N/A
<b>Staley House:</b> 2365 Murray Hill Rd.	0	N/A	N/A	N/A	N/A
<b>Storrs House:</b> 1615 Mistletoe Dr.	0	N/A	N/A	N/A	N/A
<b>Taft House:</b> 11341 Juniper Rd.	0	N/A	N/A	N/A	N/A
<b>Taplin House:</b> 11331 Juniper Rd.	0	N/A	N/A	N/A	N/A
<b>The Noble Building:</b> 1720-1728 E. 116 <sup>th</sup> St.	0	N/A	N/A	N/A	N/A
<b>Tippit House:</b> 2355 Murray Hill Rd.	0	N/A	N/A	N/A	N/A
<b>(New) Triangle Tower 2:</b> 11477 Mayfield	0	N/A	N/A	N/A	N/A
<b>Twin Gables:</b> 1715 E. 115 <sup>th</sup> St.	0	N/A	N/A	N/A	N/A
<b>Tyler House:</b> 11435 Juniper Rd.	0	N/A	N/A	N/A	N/A
<b>Alpha Chi Omega:</b> 11421 Bellflower Rd.	0	N/A	N/A	N/A	N/A
<b>Alpha Phi:</b> 11116 Magnolia Rd.	0	N/A	N/A	N/A	N/A
<b>Sigma Phi Epsilon:</b> 2255 Murray Hill Rd.	0	N/A	N/A	N/A	N/A
<b>Beta Theta Pi:</b> 2253 Murray Hill Rd.	0	N/A	N/A	N/A	N/A
<b>Delta Gamma:</b> 2265 Murray Hill Rd.	0	N/A	N/A	N/A	N/A
<b>Phi Kappa Tau:</b> 11909 Carlton Rd.	0	N/A	N/A	N/A	N/A
<b>Sigma Chi:</b> 11911 Carlton Rd.	0	N/A	N/A	N/A	N/A
<b>Phi Delta Theta:</b> 2225 Murray Hill Rd.	0	N/A	N/A	N/A	N/A
<b>Phi Kappa Psi:</b> 11915 Carlton Rd.	0	N/A	N/A	N/A	N/A
<b>Delta Kappa Upsilon:</b> 11913 Carlton Rd.	0	N/A	N/A	N/A	N/A
<b>Phi Mu:</b> 11418 Bellflower Rd.	0	N/A	N/A	N/A	N/A
<b>Phi Sigma Rho:</b> 11901 Carlton Rd.	0	N/A	N/A	N/A	N/A
<b>Sigma Nu:</b> 2235 Murray Hill Rd.	0	N/A	N/A	N/A	N/A
<b>Sigma Psi:</b> 11921 Carlton Rd.	0	N/A	N/A	N/A	N/A
<b>Kappa Alpha Theta:</b> 11923 Carlton Rd.	0	N/A	N/A	N/A	N/A
<b>Theta Chi:</b> 11136 Magnolia Dr.	0	N/A	N/A	N/A	N/A
<b>Zeta Psi:</b> 11925 Carlton Rd.	0	N/A	N/A	N/A	N/A

CWRU Police (216) 368-3333	CWRU Non-Emergency (216) 368-3300	EHS Department (216) 368-2907	Facility Services (216) 369-2580
-------------------------------	--------------------------------------	----------------------------------	-------------------------------------

# 2018 ANNUAL FIRE SAFETY REPORT

## Fire Statistics and Fire Log

On-Campus Housing Facilities	Fire Alarm System Monitored by CWRU Police Department	Smoke Detector (Fire Alarm Initiating)	Smoke Detectors (Single Station, Non-Fire Alarm Initiating)	Heat Detectors	Audible Fire Alarm Notification system (Bell, Horn, Message, tones, etc.).	Visual Fire Alarm Notification System (Strobes)	Sprinkler System (Full Sprinkler unless noted)	Kitchen Hood Suppression system	Fire Extinguishers	Fire Rated Doors Walls & Partitions	Number of Fire Drills
1576 E. 115 <sup>th</sup> St. NRV 8	X	X	X	X	X	X	X		X	X	4
1680 Building	X	Hallways Only	X	X	X	X			X		4
1727 E. 116 <sup>th</sup> St.	X	Hallways Only	X	X	X	X			X		4
1719 E. 117 <sup>th</sup>	X	Hallways Only	X	X	X	X			X		4
Alumni House	X	X		X	X	X		X	X	X	4
Clarke Tower	X	X			X	X	X	X	X	X	4
Cutler	X	X		X	X	X		X	X	X	4
Cutter	X	X		X	X	X		X	X	X	4
Glaser	X	X		X	X	X	Basement Only	X	X	X	4
Hitchcock	X	X		X	X	X		X	X	X	4
House 1	X	X	X	X	X	X	X		X	X	4
House 2	X	X	X	X	X	X	X		X	X	4
Home 3	X	X	X		X	X	X		X	X	4
Home 3A	X	X	X		X	X	X		X	X	4
House 4	X	X	X	X	X	X	X		X	X	4
House 5	X	X	X	X	X	X	X		X	X	4
House 6	X	X	X	X	X	X	X		X	X	4

CWRU Police (216) 368-3333	CWRU Non-Emergency (216) 368-3300	EHS Department (216) 368-2907	Facility Services (216) 369-2580
-------------------------------	--------------------------------------	----------------------------------	-------------------------------------

# 2018 ANNUAL FIRE SAFETY REPORT

On-Campus Housing Facilities	Fire Alarm System Monitored by CWRU Police Department	Smoke Detector (Fire Alarm Initiating)	Smoke Detectors (Single Station, Non-Fire Alarm Initiating)	Heat Detectors	Audible Fire Alarm Notification system (Bell, Horn, Message, tones, etc.).	Visual Fire Alarm Notification System (Strobes)	Sprinkler System (Full Sprinkler unless noted)	Kitchen Hood Suppression system	Fire Extinguishers	Fire Rated Doors Walls & Partitions	Number of Fire Drills
House 7	X	X	X	X	X	X	X		X	X	4
Howe	X	X		X	X	X		X	X	X	4
Kusch											
Michelson	X	X		X	X	X	Basement Only	X	X	X	4
Norton	X	X		X	X	X		X	X	X	4
Pierce	X	X		X	X	X		X	X	X	4
Raymond	X	X		X	X	X		X	X	X	4
Recovery House	X	X	X	X	X	X			X		4
Sherman	X	X		X	X	X		X	X	X	4
Smith	X	X		X	X	X		X	X	X	4
Staley	X	X		X	X	X	Kitchens Only	X	X	X	4
Storrs	X	X		X	X	X		X	X	X	4
Taft	X	X		X	X	X		X	X	X	4
Taplin	X	X		X	X	X		X	X	X	4
The Noble Building	X	Hallways	X	X	X	X			X		4
Tippit	X	X		X	X	X	Kitchens Only	X	X	X	4
Triangle Tower 2											0
Twin Gables	X	Hallways Only	X	X	X	X			X		4
Tyler	X	X		X	X	X		X	X	X	4
Alpha Chi Omega	X	X		X	X	X	Boiler Room	X	X		4

CWRU Police (216) 368-3333	CWRU Non-Emergency (216) 368-3300	EHS Department (216) 368-2907	Facility Services (216) 369-2580
-------------------------------	--------------------------------------	----------------------------------	-------------------------------------

# 2018 ANNUAL FIRE SAFETY REPORT

On-Campus Housing Facilities	Fire Alarm System Monitored by CWRU Police Department	Smoke Detector (Fire Alarm Initiating)	Smoke Detectors (Single Station, Non-Fire Alarm Initiating)	Heat Detectors	Audible Fire Alarm Notification system (Bell, Horn, Message, tones, etc.).	Visual Fire Alarm Notification System (Strobes)	Sprinkler System (Full Sprinkler unless noted)	Kitchen Hood Suppression system	Fire Extinguishers	Fire Rated Doors Walls & Partitions	Number of Fire Drills
<b>Alpha Phi</b>	X	X		X	X	X	<b>Basement Only</b>	X	X	X	4
<b>Delta Gamma</b>	X	X		X	X	X		X	X	X	4
<b>Phi Kappa Tau/Sigma Chi</b>	X	X		X	X	X		X	X	X	4
<b>Phi Delta Theta</b>	X	X		X	X	X		X	X	X	4
<b>Phi Kappa Psi/Delta Upsilon</b>	X	X		X	X	X		X	X	X	4
<b>Phi Mu</b>	X	X		X	X	X	<b>Basement Only</b>	X	X		4
<b>Phi Sigma Rho</b>	X	X		X	X	X			X	X	4
<b>Sigma Nu</b>	X	X		X	X	X		X	X	X	4
<b>Sigma Phi Epsilon</b>	X	X		X	X	X		X	X	X	4
<b>Sigma Psi/Kappa Alpha Theta</b>	X	X		X	X	X		X	X	X	4
<b>Theta Chi</b>	X	X		X	X	X		X	X	X	4
<b>Zeta Psi</b>	X	X		X	X	X		X	X	X	4

CWRU Police (216) 368-3333	CWRU Non-Emergency (216) 368-3300	EHS Department (216) 368-2907	Facility Services (216) 369-2580
-------------------------------	--------------------------------------	----------------------------------	-------------------------------------

# 2018 ANNUAL FIRE SAFETY REPORT

## FIRE DRILLS

The Fire and Life Safety Specialist for Case Western Reserve University conducts mandatory fire drills in compliance with the State of Ohio Fire Code for all University on-campus housing.

Fire drills are conducted 4 times a year (2 per semester) for all on-campus housing facilities. During summer sessions and camps; Housing, Residence Life, and Greek Life staff are responsible for educating the occupants on fire evacuation procedures and the location of assembly points due to the constant changing of occupants (i.e. camps, conferences, etc.).

## FIRE SAFETY POLICIES IN ON-CAMPUS HOUSING

All residents should assume responsibility for ensuring fire safety in all residence facilities. Violation of fire safety includes, but is not limited to:

- Setting A Fire
- Sounding a false alarm, including:
  - 1). Falsely reporting fire, bomb threats, serious injury, or any other emergency.
  - 2). Intentionally or negligently activating a fire alarm when no fire is present
  - 3). Tampering with a fire alarm pull station or fire suppression system.
- Not evacuating the building during a fire alarm.
- Tampering with a smoke/particle detector; sprinkler heads, or other fire safety equipment.
- Using a fire extinguisher in a non-emergency situation.
- Not evacuating the building during a fire alarm.
- Tampering with a smoke/particle detector; sprinkler heads, or other fire safety equipment.
- Using or possessing cooking appliances (except in designated cooking area), hot plates, electrical heaters, halogen lighting sources, extension cords or similar electrical equipment.
- Leaving cooking items unattended while in use.
- Using candles, incense, or any open-flamed device.
- Storage of a motor vehicle of any type within a residence facility.
- The blocking of any inside or outside exit.
- Storage of explosive or flammable/combustible materials.
- Obstructing or blocking fire doors, corridors, hallways or tampering with self-closing mechanisms.

CWRU Police (216) 368-3333	CWRU Non-Emergency (216) 368-3300	EHS Department (216) 368-2907	Facility Services (216) 369-2580
-------------------------------	--------------------------------------	----------------------------------	-------------------------------------



# 2018 ANNUAL FIRE SAFETY REPORT

## Evacuation Procedures:

### What you should do:

1. If you smell or see smoke or fire, activate the fire alarm by pulling an alarm station.  
**Note: Mandatory Evacuation When a Fire Alarm Is Activated.**
2. Do not attempt to fight the fire yourself unless you have been trained in the use of firefighting equipment and if it is safe to do so.
3. Notify occupants and help those needing assistance in the immediate area.
4. If fire is present in the immediate area leave all belongings and exit immediately. Otherwise, when an alarm sounds quickly gather essential personal belongings only if it can be done safely (I.D., keys, purse, wallets, etc.) and proceed out of the building. Close doors behind you to help contain the fire.
5. Follow the building's evacuation map and exit quickly via stairwells only: **"DO NOT"** attempt to use elevators. Persons with disabilities who are unable to use the stairs should wait in the stairwell for rescue assistance.
6. If you get caught in heavy smoke, take short breaths, couch down or crawl.
7. If the fire or smoke prevents you from exiting the building, go to a room far away from the fire (preferably a room with a window), shut the door and phone for help (cell phone or room phone. If you cannot reach outside help using technology, open or break a window and signal for help. Placing an object (coat blanket, towel, etc.,) under the door may prevent smoke from intruding while you are awaiting rescue.
8. Once outside proceed to the evacuation assembly area. If emergency responders are not already on the scene call CWRU Police/Security Dispatch with the following information:
  - a). Your name
  - b). Exact location of the fire and any other information you may have about the fire.
9. Return to the building only when instructed to do so by emergency personnel.

### What will happen:

1. The dispatcher will notify the appropriate Fire Department and CWRU Police/Security.
2. CWRU Police/Security will respond and coordinate with the responding fire personnel.
3. Once the actual fire or fire alarm situation is resolved, and the building is assessed for safety concerns, CWRU Police/Security or fire department officials may grant permission to re-occupy the building or to enter and retrieve personal belongings.

CWRU Police (216) 368-3333	CWRU Non-Emergency (216) 368-3300	EHS Department (216) 368-2907	Facility Services (216) 369-2580
-------------------------------	--------------------------------------	----------------------------------	-------------------------------------

# 2018 ANNUAL FIRE SAFETY REPORT

## Fire Safety Education/Training:

The Environmental Health and Safety Office offer a variety of fire safety education and training programs for the community of Case Western Reserve University.

Students receive fire safety and evacuation information during mandatory meetings with their Resident Assistant and during the required fire drills. The student can also receive voluntary fire safety education in a variety of different ways.

During the school year fire safety programs are held at request of the Resident Assistants or Coordinators in the various buildings. These additional fire safety programs include but are not limited to cover:

- Emergency procedures
- Fire safety issues
- Prohibited items
- General prevention tips
- Cooking fire safety
- Fire Extinguisher usage
- Additional fire safety programs can also be held at request of a student sponsoring group or organization.

Mandatory fire safety training is provided to Housing, Residence Life, and Greek Life Resident Assistants and Coordinators annually. These training cover:

- Emergency Procedures
- Fire safety issues
- Prohibited items
- Fire extinguisher usage

CWRU Police and Security Officers receive mandatory fire safety training. This training includes:

- Fire and Alarm Response
- Fire Protection Systems
- Fire Extinguisher Usage

Fire Safety Education and Training Programs are available for employees for their specific departments at request.

CWRU Police (216) 368-3333	CWRU Non-Emergency (216) 368-3300	EHS Department (216) 368-2907	Facility Services (216) 369-2580
-------------------------------	--------------------------------------	----------------------------------	-------------------------------------

# 2018 ANNUAL FIRE SAFETY REPORT

## Fire Response Procedures:

In case of a fire alarm, the following procedure is to be followed. Generally, the **RACE** procedure is used in all university facilities with some variations Always consult and follow your building-specific Building Emergency Act Plan or posted evacuation procedures.

If you discover a fire or smoke condition: **RACE**

- **R**escue any person in immediate danger
- **A**larm – pull the fire alarm to alert everyone. Report the incident by calling CWRU Police and Security at (216) 368-3333
- **C**onfine the fire by closing all doors, where possible. Turn off electric and gas equipment in your area as you evacuate, if possible.
  - Extinguish a small fire using a fire extinguisher, if trained and if it is safe to do so.
- **E**vacuate using the nearest stair exit. Follow the exit signs
  - Report any discharged fire extinguishers and any first-hand information that you might have to CWRU Police and Security.

If you hear or see a fire alarm signal or announcement:

- Follow the emergency procedure for your building and area.
- Follow the announcements on the public address system or instructions of your area floor captains.
- Follow the **EXIT** signs. Use stairs. **Do Not Use Elevators**. Walk at a normal pace.
- Wait outside in the designated assembly areas at least 50 feet or more away from the building as instructed.
- Re-enter the building only after the “All Clear” has been announced.

<b>REMEMBER THE FIRE EXTINGUISHER KEY WORDS</b>	
<b>P.A.S.S.</b>	<b>A.B.C.</b>
<b>P</b> ull the pin	<b>Class A:</b> Wood, Paper, Plastic
<b>A</b> im at the base of the fire	<b>Class B:</b> Oil, Grease
<b>S</b> queeze the handle	<b>Class C:</b> Electrical
<b>S</b> weep side to side (Slowly)	<b>Class ABC:</b> Cover all of the above ^

CWRU Police (216) 368-3333	CWRU Non-Emergency (216) 368-3300	EHS Department (216) 368-2907	Facility Services (216) 369-2580
-------------------------------	--------------------------------------	----------------------------------	-------------------------------------

# 2018 ANNUAL FIRE SAFETY REPORT

## Fire Response Procedures:

### Fire Extinguishers

Portable fire extinguishers of appropriate type and size are provided as required in all areas. Extinguishers are inspected, tested, maintained and documented as required by the Ohio Fire Code. Fire extinguishers are provided throughout all of the university buildings for the use of trained students, faculty, and staff. Please contact the EHS office, **Justin Fry** at (216) 368-0021 for upcoming training opportunities.

Fire doubles in size every 30 seconds so knowing how to properly and safely extinguish a fire is a huge advantage. An average extinguisher discharges completely in less than 1 minute. Therefore, it is important that you know at least two locations for extinguishers. Under the Ohio Fire Code there is a 75-foot travel distance between extinguishers.

### Safety Precautions

- Before using a fire extinguisher, ALWAYS pull the building fire alarm first.
- Do not attempt to use a fire extinguisher if the fire is large and spreading Use it only for small fire-defense (e.g., a waste paper basket).
- Do not use the fire extinguisher if the lock pin is tampered, the cylinder is damaged or if the pressure gauge pointer is in the “RECHARGE” zone.
- Do not use the fire extinguisher if you are not trained and confident about using it.
- Read the extinguisher label to check if it is of right type for the kind of fire at hand. The label indicates one or more of the following fire classes and symbols and specific applications for which it can be used.
- Protect yourself at all time
- Never block your escape route
- Stay low. Avoid breathing the heated smoke and fumes
- If the fire cannot be controlled, get out immediately to safety.

CWRU Police (216) 368-3333	CWRU Non-Emergency (216) 368-3300	EHS Department (216) 368-2907	Facility Services (216) 369-2580
-------------------------------	--------------------------------------	----------------------------------	-------------------------------------

# 2018 ANNUAL FIRE SAFETY REPORT

## Fire Response Procedures:

### HOW TO USE A FIRE EXTINGUISHER:

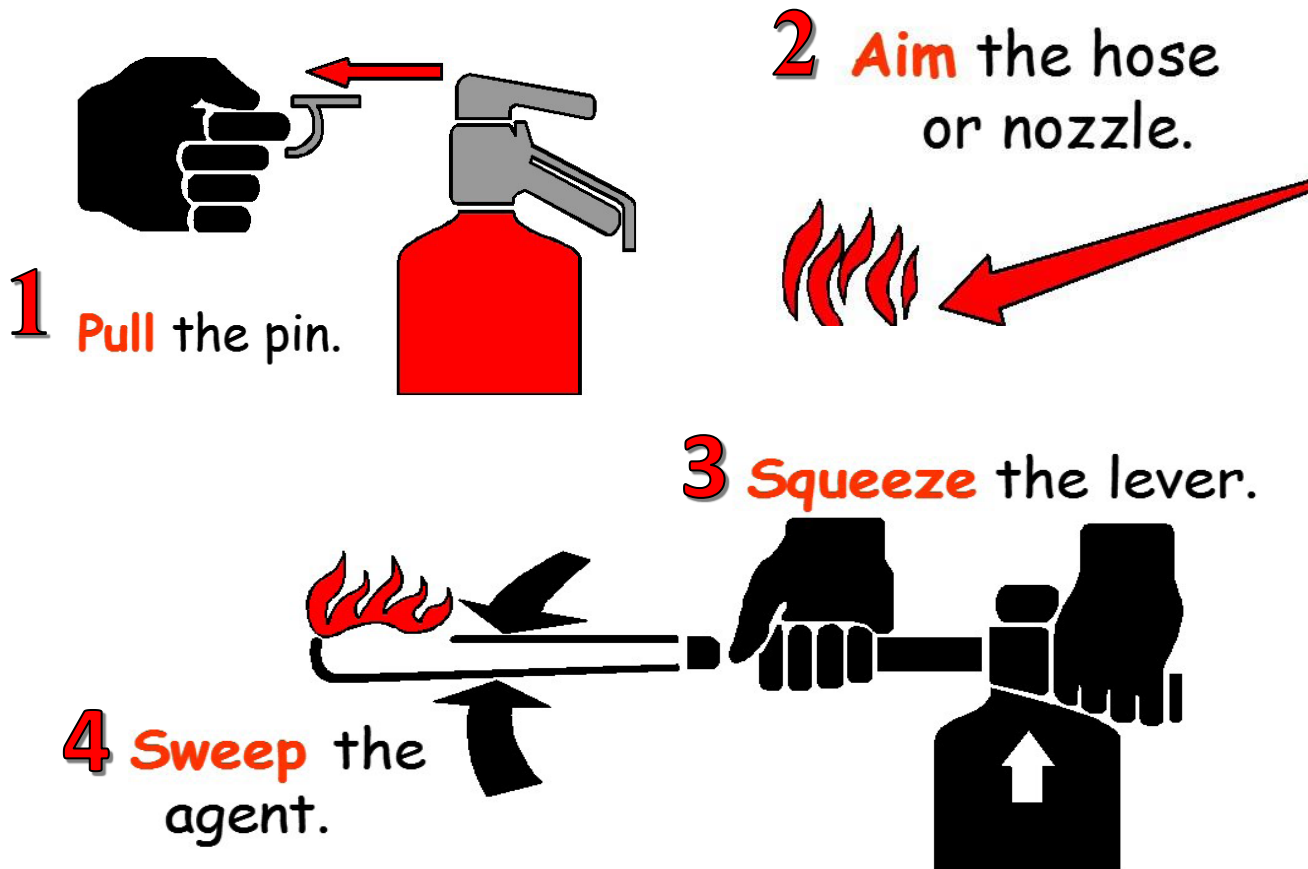
- Make sure you are using the proper extinguisher for the type of fire
- Position yourself at a safe distance from the fire (e.g., 7-10 feet).

### REMEMBER THE “PASS” PROCEDURE

- Pull the pin: this will unlock the operating lever and allow you to discharge the extinguisher.
- Aim low: and point the extinguisher nozzle/horn/hose towards the base of the fire.
- Squeeze and hold: the handle to discharge the extinguishing agent without any interruption.
- Sweep slowly: from side to side while holding the handle.

\*Watch the fire area until it has completely cooled down.

\*Report the discharged extinguisher to the EHS Office, Justin Fry at (216) 368-0021. Always make sure the fire alarm is currently activated before attempting to extinguish. Also, make sure you have a clear escape path before attempting to extinguish.



CWRU Police  
(216) 368-3333

CWRU Non-Emergency  
(216) 368-3300

EHS Department  
(216) 368-2907

Facility Services  
(216) 369-2580



# 2018 ANNUAL FIRE SAFETY REPORT

## Fire Protection Systems

### FIRE ALARM SYSTEMS

Fire Alarm Systems are located in each of CWRU's buildings. Many of these systems go unnoticed day in and day out. However, in times of emergence they are critical.

Smoke/heat detectors detect smoke or fire and automatically activate the buildings fire alarm system

Pull stations are located throughout the buildings in main corridors and near the stairwells. In the case of fire or smoke; Always pull the closest pull station, regardless of the size of the fire!

### SPRINKLER SYSTEMS

Sprinklers are installed in many building areas to protect both life and property. In the case of a fire, each head detects temperature in the room and begins spraying water as soon as the room temperature exceeds a pre-determined value. Not all buildings or areas are equipped with sprinkler systems. Hazardous locations, storage areas and basement levels are generally protected with sprinklers as required by the Ohio Fire Code.

As you store materials and boxes in your area, always maintain a *minimum of 18 inches* of clearance between the ceiling and the storage. This clearance allows the sprinkler head to spray water uniformly and extinguish the fire effectively. If you notice any unsafe conditions such as a sprinkler head that is painted over or heavily laden with dust, blocked in any other manner of broken, promptly this to the EHS Office **Justin Fry** at (216) 368-0021.

### FIRE AND SMOKE DOORS

University buildings are equipped with fire rated doors and smoke-barrier doors. These doors prevent smoke and heat from traveling up stairwells and along corridors. Please do not prop any fire/smoke doors unless they have approved hardware such as, a magnetic fire door release.

CWRU Police (216) 368-3333	CWRU Non-Emergency (216) 368-3300	EHS Department (216) 368-2907	Facility Services (216) 369-2580
-------------------------------	--------------------------------------	----------------------------------	-------------------------------------