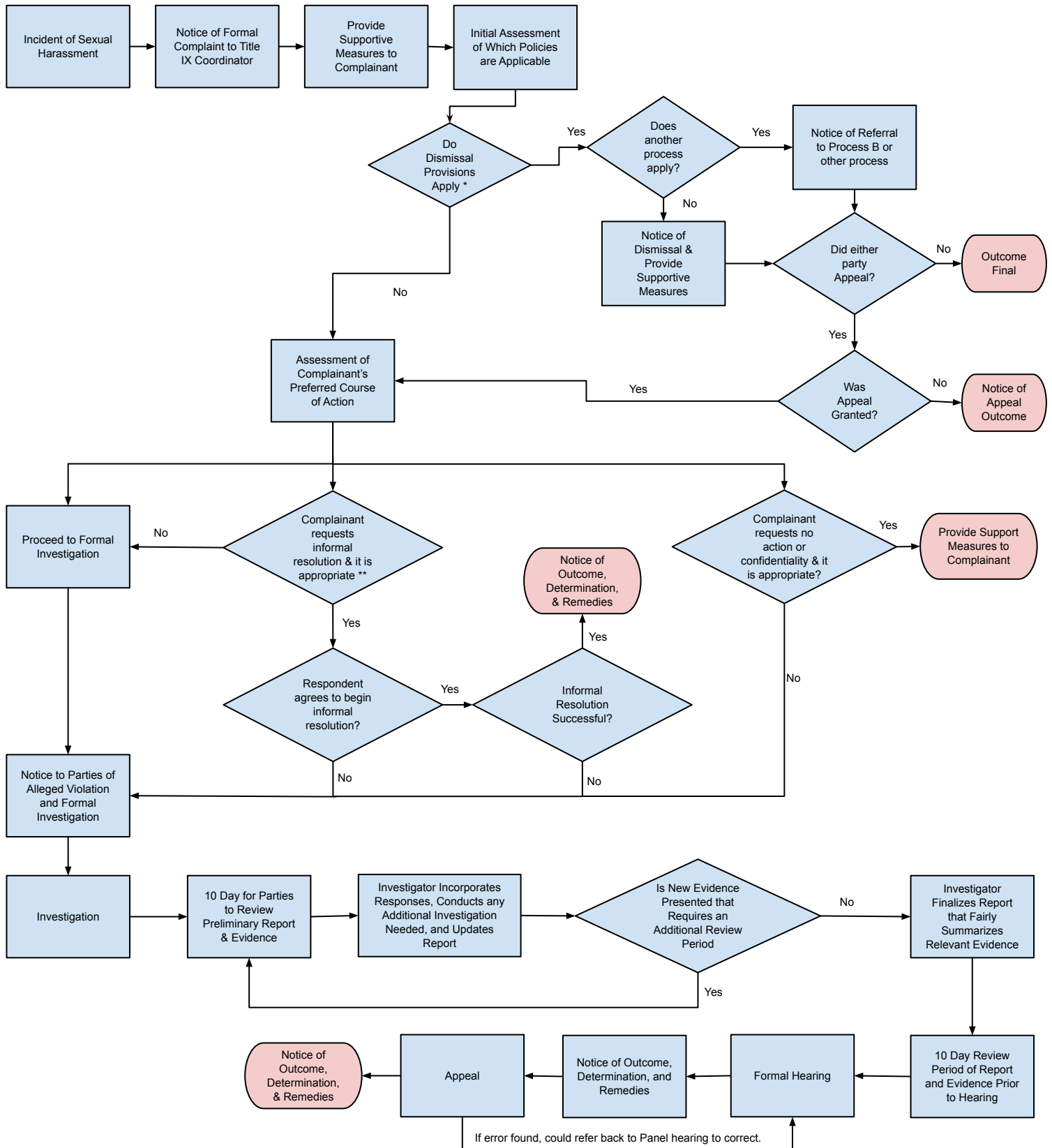


CWRU INTERIM SEXUAL HARASSMENT POLICY FLOW CHART (Process A)



* An initial review of Dismissal Requirements is completed at the beginning of the process, however, if at any time the investigator becomes aware that a dismissal requirement is met, the report will be re-reviewed.
 ** A party can request an informal resolution at any time during the process including the investigation and hearing phase, but is drawn here as part of the initial assessment.