

Spring Semester – Dining Services Update

“Safety is our highest priority!”

Welcome to the start of a new year of dining at CWRU!

In response to the safety issues raised in the current environment, we have enacted a number of changes within the Dining Services environment with student safety in mind.



- Meal plans, locations, occupancy & hours have all been adjusted to meet with current safety guidelines.
- New meal plan locations have been added, such as BRB Café near the Quad for breakfast and lunch!
- New employee and student safety policies have been put in place at all university campus locations.
- Menu options have been streamlined and a new reservation app has been added to minimize student wait times.
- Grab & Go and Take-out options have been expanded and new locations added, including at the Dining commons.
- Dining apps have been incorporated into our retail operations to allow customized orders for pick-up.



MEET YOUR DIETITIAN

MEGAN BRZUSKI, RESIDENTIAL DIETITIAN



For students with dietary restrictions, contact Residential Dietitian, Megan Brzuski to better understand your dining options on campus.



Megan Brzuski

Megan.Brzuski@cafebonappetit.com

216.368.1055

Apartment & Greek Meal Plan

Plan Location	<u>Sun</u>	<u>Mon</u>	<u>Tue</u>	<u>Wed</u>	<u>Thu</u>	<u>Fri</u>	<u>Sat</u>	Weekly Limit
	Meal swipe limit per day by location							
Leutner Commons* (7:30AM - 8PM) Carlton Commons* (7:30AM - 8PM)	Daily Limit							Plan Limit
Local Taco (8AM - 2PM) Performance Bowl (8AM - 2PM) Subway (8AM - 2PM) HEC Kitchen(7AM - 4PM)*	Daily Limit							Plan Limit
The Den (Grubhub App)(4PM-12AM)	2	2	2	2	2	2	2	14 Per week/Plan Limit
Portable Swipe locations	Portable Swipes are only usable via the Grubhub App							Plan Limit usable through the Grubhub App Only (or in person at Dunkin')
Pinza's/8Twenty6 (11AM - 8PM) Plum Market Kitchen BRB Café (7:30AM - 2PM)	Daily Limit							
<i>Dunkin Donuts</i>	<i>Dunkin must use swipe at location</i>							
Jolly Scholar OR Road Scholar OR Southside Scholar (Grubhub App)	5	5	5	5	5	5	5	5 Per week
Daily Limit	4							

* Guest swipes can be used at these locations

Auxiliary Services | Yost Hall, Room 35 | tel: 216-368-5844

Classic Meal Plan

Plan Location	<u>Sun</u>	<u>Mon</u>	<u>Tue</u>	<u>Wed</u>	<u>Thu</u>	<u>Fri</u>	<u>Sat</u>	Weekly Limit
	Meal swipe limit per day by location							
Leutner Commons* (7:30AM - 8PM) Carlton Commons* (7:30AM - 8PM)	Daily Limit							Plan Limit
Local Taco (8AM - 2PM) Performance Bowl (8AM - 2PM) Subway (8AM - 2PM) HEC Kitchen(7AM - 4PM)*	Daily Limit							Plan Limit
The Den (Grubhub App)(4PM-12AM)	2	2	2	2	2	2	2	14 Per week/Plan Limit
Portable Swipe locations	Portable Swipes are only usable via the Grubhub App							Plan Limit usable through the Grubhub App Only (or in person at Dunkin')
Pinza's/8Twenty6 (11AM - 8PM) Plum Market Kitchen BRB Café (7:30AM - 2PM)	Daily Limit							
<i>Dunkin Donuts</i>	<i>Dunkin must use swipe at location</i>							
Jolly Scholar OR Road Scholar OR Southside Scholar (Grubhub App)	5	5	5	5	5	5	5	
Daily Limit	4							

* Guest swipes can be used at these locations

Auxiliary Services | Yost Hall, Room 35 | tel: 216-368-5844

Kosher/Halal Meal Plan

Plan Location	<u>Sun</u>	<u>Mon</u>	<u>Tue</u>	<u>Wed</u>	<u>Thu</u>	<u>Fri</u>	<u>Sat</u>	Weekly Limit
	Meal swipe limit per day by location							
Leutner Commons* (7:30AM - 8PM) Carlton Commons* (7:30AM - 8PM)	Daily Limit							Plan Limit
Local Taco (8AM - 2PM) Performance Bowl (8AM - 2PM) Subway (8AM - 2PM) HEC Kitchen(7AM - 4PM)*		Daily Limit						Plan Limit
The Den (Grubhub App)(4PM-12AM)								
Portable Swipe locations	Portable Swipes are only usable via the Grubhub App							Plan Limit usable through the Grubhub App Only
Pinza's/8Twenty6 (11AM - 8PM)								
Plum Market Kitchen	Daily Limit							
BRB Café (7:30AM - 2PM) <i>Dunkin Donuts</i>								
Jolly Scholar OR Road Scholar OR Southside Scholar (Grubhub App)								
Daily Limit	4							

* Guest swipes can be used at these locations

Auxiliary Services | Yost Hall, Room 35 | tel: 216-368-5844

Unlimited Meal Plan

Plan Location	<u>Sun</u>	<u>Mon</u>	<u>Tue</u>	<u>Wed</u>	<u>Thu</u>	<u>Fri</u>	<u>Sat</u>	Weekly Limit
	Meal swipe limit per day by location							
Leutner Commons* (7:30AM - 8PM) Carlton Commons* (7:30AM - 8PM)	Daily Limit							Plan Limit
Local Taco (8AM - 2PM) Performance Bowl (8AM - 2PM) Subway (8AM - 2PM) HEC Kitchen(7AM - 4PM)*	Daily Limit							Plan Limit
The Den (Grubhub App)(4PM-12AM)	2	2	2	2	2	2	2	14 Per week/Plan Limit
Portable Swipe locations	Portable Swipes are only usable via the Grubhub App							Plan Limit usable through the Grubhub App Only (or in person at Dunkin')
Pinza's/8Twenty6 (11AM - 8PM) Plum Market Kitchen BRB Café (7:30AM - 2PM)	Daily Limit							
<i>Dunkin Donuts</i>	<i>Dunkin must use swipe at location</i>							
Jolly Scholar OR Road Scholar OR Southside Scholar (Grubhub App)	5	5	5	5	5	5	5	
Daily Limit	Unlimited							

* Guest swipes can be used at these locations

Auxiliary Services | Yost Hall, Room 35 | tel: 216-368-5844

Grubhub Mobile App for Retail


Grubhub
Campus Dining
allows students
to seamlessly use
their meal plan
swipes and
CaseCash at on
campus retailers
to get made to
order meals on
the go.

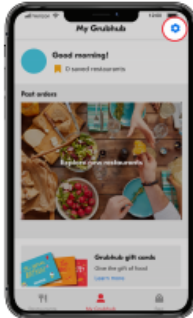
GRUBHUB

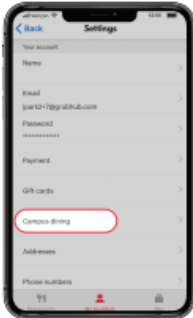
Welcome to Campus Dining on Grubhub!


You can access Campus dining in many different ways. The following instructions are for onboarding onto Campus dining on Grubhub through **User Settings**.

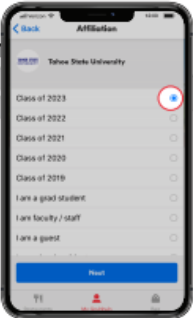
Instructions:

- 

Download Grubhub and create a new account. Or Sign in if you already have Grubhub downloaded.
- 

On your Account page, select the Settings (gear icon) at the top right
- 

In your Settings, click on Campus Dining
- 

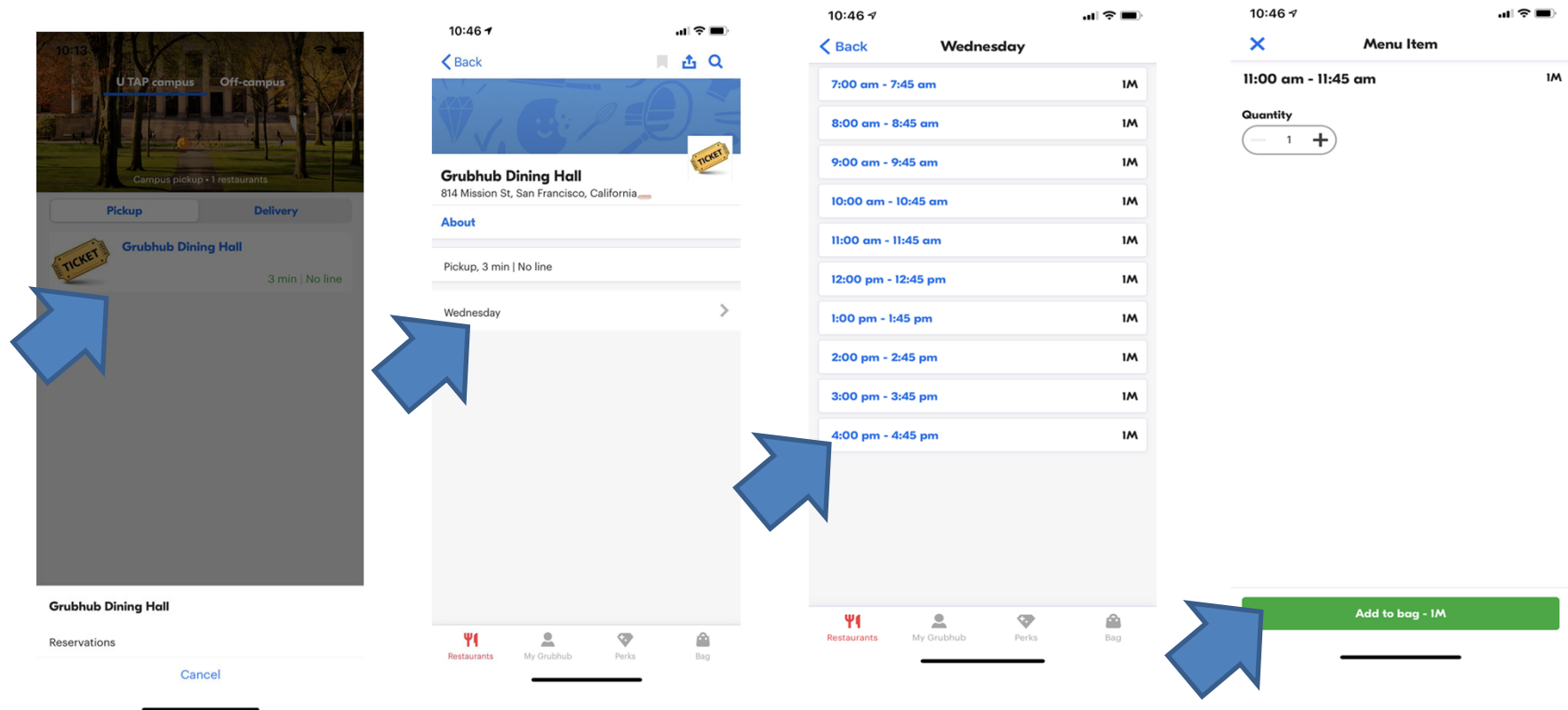
Select your campus and your school affiliation
- 

Add campus card or go directly to the list of on campus restaurants.

Grubhub RSVP at Residential Dining Commons

Students will need to reserve a spot for dining. The swipes are only taken upon location check in.

Students will have the option to get meals to go or reserve seating within one of our residential dining halls which allows them access to multiple options without re-entry.



SAMPLE MENUS

orders can be customized via GrubHub



MONDAY	
Lunch	Dinner
Chorizo Soft Tacos	Herb Roasted Beef
Tofu Chorizo Tacos	Herb Roasted Tofu
Black Beans	Mashed Potatoes
Cilantro Rice	Glazed Carrots
Cheese Burger	Cheese Burger
Hot Dog	Hot Dog
Cheese Pizza	Cheese Pizza
Pepperoni Pizza	Pepperoni Pizza
French Fries	French Fries
Salad Feature	Salad Feature
Garden Salad	Garden Salad
Soup of the Day	Soup of the Day

TUESDAY	
Lunch	Dinner
Szechuan Chicken	Burrito Bowl with Barbacoa
Szechuan Tofu	Burrito Bowl with Green Chile Tofu
Steamed Broccoli	Stewed Hominy
Steamed Rice	Steamed Rice
Cheese Burger	Cheese Burger
Hot Dog	Hot Dog
Cheese Pizza	Cheese Pizza
Pepperoni Pizza	Pepperoni Pizza
French Fries	French Fries
Salad Feature	Salad Feature
Garden Salad	Garden Salad
Soup of the Day	Soup of the Day

WEDNESDAY	
Lunch	Dinner
Jerk Chicken with Pineapple Salsa	Beef Madras Curry
Jerk Tofu with Pineapple Salsa	Saag Tofu
Roasted Vegetables	Basmati Rice
Beans and Rice	Roasted Cauliflower
Cheese Burger	Cheese Burger
Hot Dog	Hot Dog
Cheese Pizza	Cheese Pizza
Pepperoni Pizza	Pepperoni Pizza
French Fries	French Fries
Salad Feature	Salad Feature
Garden Salad	Garden Salad
Soup of the Day	Soup of the Day

THURSDAY	
Lunch	Dinner
BBQ Beef Brisket	Corned Beef
BBQ Tofu	Roasted Tofu
Macaroni and Cheese	Sautéed Cabbage
Corn Sauté	Butter and Parley Potatoes
Cheese Burger	Cheese Burger
Hot Dog	Hot Dog
Cheese Pizza	Cheese Pizza
Pepperoni Pizza	Pepperoni Pizza
French Fries	French Fries
Salad Feature	Salad Feature
Garden Salad	Garden Salad
Soup of the Day	Soup of the Day

FRIDAY	
Lunch	Dinner
Beef Bolognese Pasta Bake Eggplant Parmesan with Pesto Pasta Roasted Broccoli with Lemon, Garlic, Chili Flake Cheese Burger Hot Dog Cheese Pizza Pepperoni Pizza French Fries Salad Feature Garden Salad Soup of the Day	Lemon Butter Pollack Herb Lemon and Fennel Tofu Roasted Vegetables Roasted Potatoes Cheese Burger Hot Dog Cheese Pizza Pepperoni Pizza French Fries Salad Feature Garden Salad Soup of the Day

SATURDAY	
Lunch	Dinner
Chicken Fajitas Mushroom Fajitas Rice and Beans Cumin Roasted Cauliflower Cheese Burger Hot Dog Cheese Pizza Pepperoni Pizza French Fries Salad Feature Garden Salad Soup of the Day	Lebanese Beef Bowl Lebanese Tofu Bowl Spiced Marinated Carrots Turmeric Rice Cheese Burger Hot Dog Cheese Pizza Pepperoni Pizza French Fries Salad Feature Garden Salad Soup of the Day

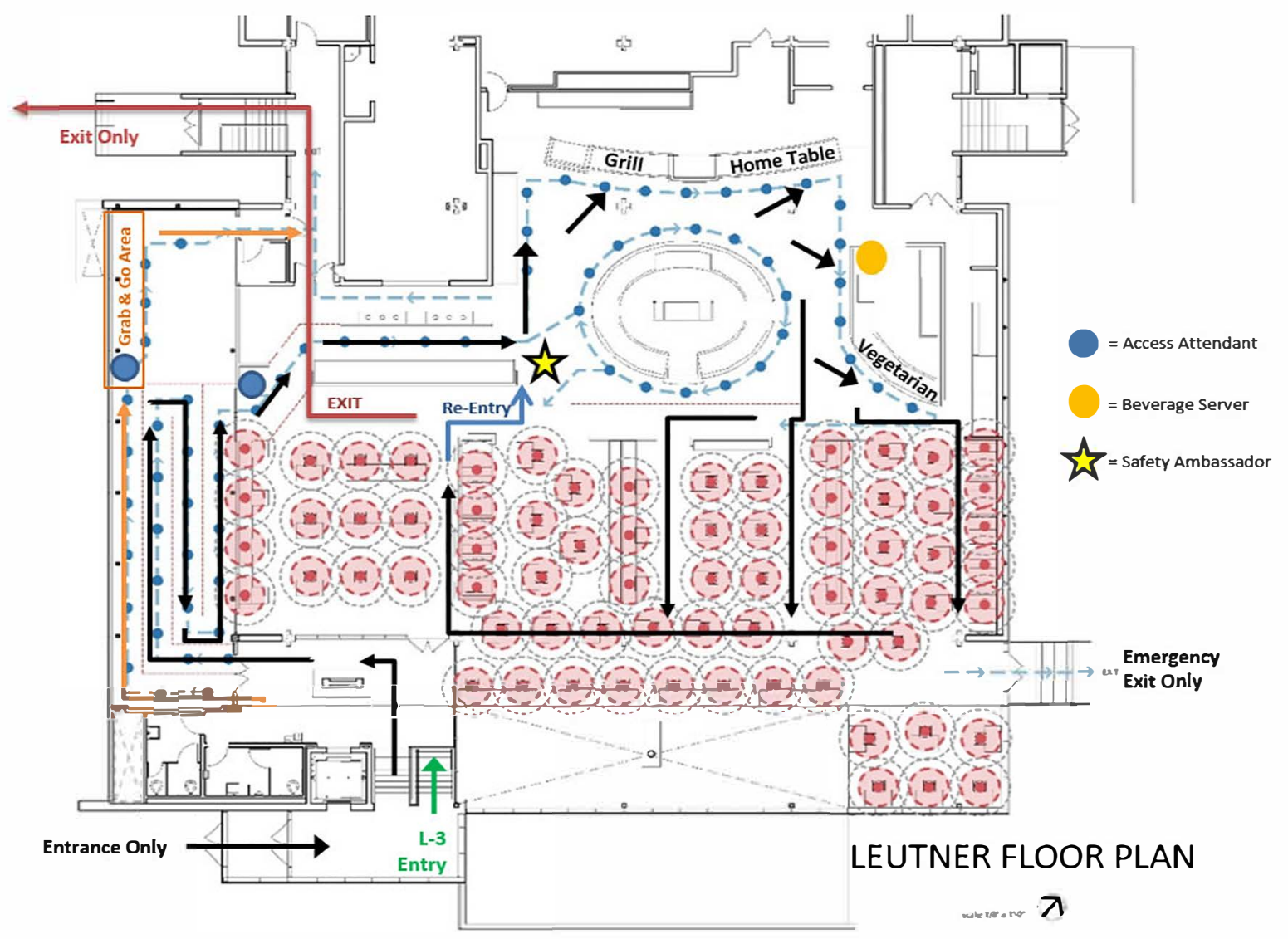
SUNDAY

Lunch

- Buttermilk Fried Chicken
- Buttermilk Fried Tofu
- Braised Collard Greens
- Sweet Potato Hash
- Cheese Burger
- Hot Dog
- Cheese Pizza
- Pepperoni Pizza
- French Fries
- Salad Feature
- Garden Salad
- Soup of the Day

Dinner

- Meatballs Marinara
- Tofu Marinara
- Parmesan Polenta
- Roasted Brussel Sprouts
- Cheese Burger
- Hot Dog
- Cheese Pizza
- Pepperoni Pizza
- French Fries
- Salad Feature
- Garden Salad
- Soup of the Day



Case Western Reserve University On-Campus Vendors

CWRU Main Quad	Dine -in	Take Out	Mobile ordering
Einstein Bros. Bagels - Nord		Closed	
<u>Grab-It - Sears Library</u>		Closed	
<u>Tomlinson - Cle Table</u>	Yes	Yes	Yes
<u>Tomlinson - Performance Bowl</u>	Yes	Yes	Yes
<u>Tomlinson - Local Taco</u>	Yes	Yes	Yes
<u>Tomlinson - Subway</u>	Yes	Yes	Yes
<u>Sages Cafe - Crawford Hall</u>		Closed	
Central Campus	Dine -in	Take Out	Mobile ordering
<u>Jolly Scholar</u>		Yes	Yes
<u>Michelson & Morley @ TVUC</u>		Closed	
<u>TVUC - Melt University</u>		Closed	
<u>TVUC - Miso</u>		Closed	
<u>TVUC - Pinza's</u>		Yes	Yes
<u>TVUC - 8twenty6</u>		Yes	Yes
<u>TVUC - Cool Beanz</u>		Yes	Yes
<u>Cramelot Cafe - KSL Library</u>		Closed	
<u>Bag-It - Thwing Center</u>		Closed	
Health Sciences Complex	Dine -in	Take Out	Mobile ordering
<u>BRBistro</u>		Yes	Yes
<u>BRB Cafe</u>		Yes	Yes
West Campus	Dine -in	Take Out	Mobile ordering
<u>HEC Kitchen</u>		Yes	Yes
<u>HEC Press & Bakery</u>		Closed	
North Campus	Dine -in	Take Out	Mobile ordering
<u>Leutner Commons</u>	RSVP	Yes	Yes
<u>L3 Grill</u>		Closed	
The Den		Yes	Yes
Starbuck's at NRV		Yes	Yes
Dunkin Donuts @ Uptown		Yes	Yes
Res Judicafe		Closed	
Plum Market Kitchen		Yes	Yes
South Campus	Dine -in	Take Out	Mobile ordering
<u>Carlton Commons</u>	RSVP	Yes	Yes
Road Scholar		Yes	Yes

Introducing Bookstore Bucks

WHAT?

The “Bookstore Bucks” program allows students to charge textbooks and academic supplies directly to the student’s financial account.

HOW?

- Head to the University Bookstore at Uptown, purchase textbooks and academic supplies, hand your CaseOneCard to the cashier and ask that purchases be charged to “Bookstore Bucks”.
- Or order online at the Barnes and Noble Campus Bookstore website.
- Each undergraduate student is eligible to charge up to \$800 in Bookstore Bucks per semester.
- Charges made using Bookstore Bucks will appear on the student account bill within 3 business days, available in SIS (<https://www.case.edu/sis>) at the Campus Community page. Payment of Bookstore Bucks charges remains the student’s responsibility.

WHEN?

Bookstore Bucks purchases can be made during a five-week period, starting two weeks prior to the beginning of each semester, and ending after the third week of classes. Spring 2021 program ends on February 16th and all expenditures will appear on February 23rd tuition bill. Payment for Bookstore Bucks charges are due in full on the following billing cycle.

ANYTHING ELSE?

Bookstore Bucks can only be used to obtain academic materials. Other University Bookstore purchases, such as that great dorm rug, or the new CWRU sweatshirt, must be purchased in the usual manner, using cash, a check, debit/credit cards, or CaseCash.

Questions : auxiliary@case.edu

GETTING YOUR COURSE MATERIALS IS EASY

RENT OR BUY course materials from your CWRU Bookstore and get...

THE RIGHT COURSE MATERIALS: We worked directly with your professors to ensure the right course materials are available for all of your classes.

LARGEST SELECTION: Your course required course materials are available through the CWRU Bookstore; instore or online (<http://www.cwru.bncollege.com>)

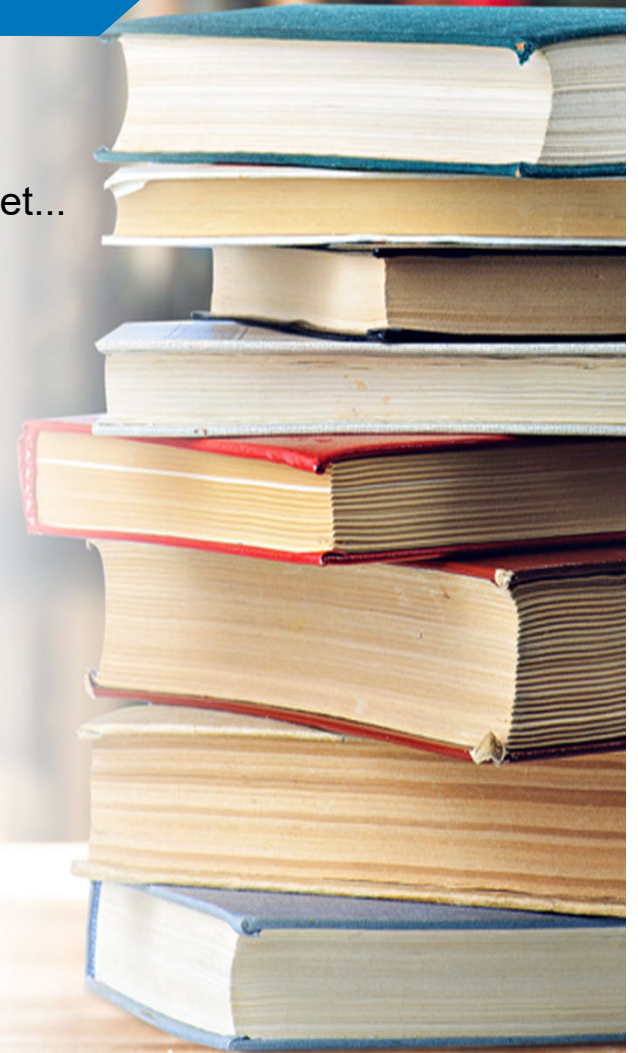
SAVINGS: Save up to 90% when buying or renting course materials from your campus store

PRICE MATCH: Rent or buy we price match Amazon, bn.com and local competitors. See our website for complete details.

CONVENIENCE: Your Campus Store is right on campus. And Free and Fast in-store pickup is an available option with every online order.

HASSLE-FREE RETURNS: Dropped a class? Get a full refund if you need to return your book by 02/16/21.

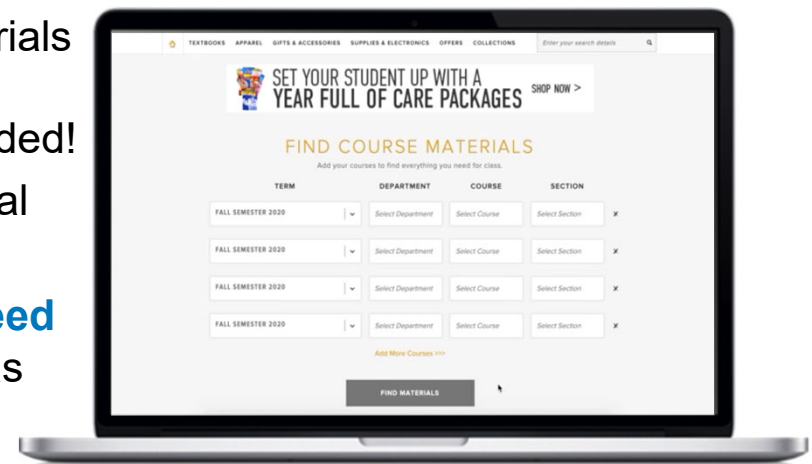
GET CASH BACK: Your books may be eligible to sell back to us for cash.



BUYING OR RENTING COURSE MATERIALS AT <http://www.cwru.bncollege.com?>

No problem, we made it quick and easy for you....

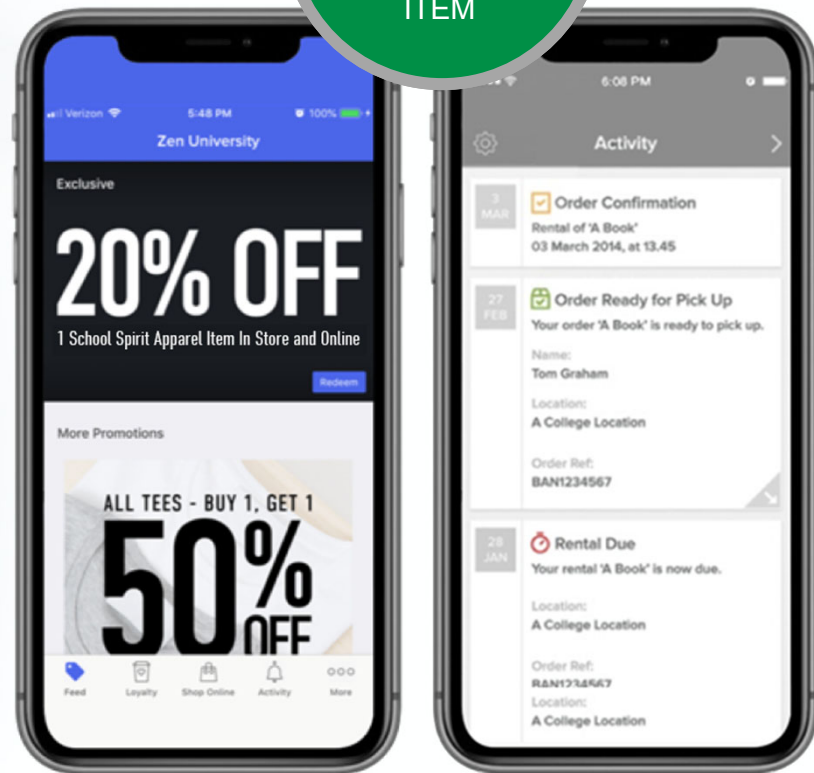
1. Visit <http://cwru.bncollege.com/> to start ordering online.
2. **Simply add your courses** into our course materials tool.
Your required course materials have been preloaded!
3. **Choose to Rent or Buy** your New, Used or Digital course materials.
4. **Select your preferred shipping option & proceed to checkout.** We'll email you when your order has shipped or is ready for **FREE** in-store pickup.
5. **Orders over \$49** are shipped by UPS free when ground shipping is requested within the US.
6. **We can now ship UPS internationally**



MY COLLEGE BOOKSTORE APP

- How to Download
 - Search for 'My College Bookstore' in the App Store or Google Play, or visit appbnc.com
 - Click on the [Get Started](#) button and enter your information
 - Enable Push Notifications to ensure you get the most up-to-date announcements!
- Features of the App
 - [Coupons](#) & exclusive discounts
 - Rental due date [reminders](#)
 - Order & shipment [updates](#)
 - [Tips & advice](#) for students
 - Promotion & event [notifications](#)

DOWNLOAD
NOW AND GET
20% OFF ONE
[SCHOOL NAME]
ITEM



Useful Websites

case.edu/dining

case.edu/dining/how-pay/caseonecard

case.cafebonappetit.com/

grubhub.com/about/campus

case.bncollege.com/

case.edu/access-services/

case.edu/travel/

case.edu/printing/

facebook.com/DiningCWRU/

case.edu/access-services/transportation/shuttles/shuttle-tracking