



MetroHealth



Did you know we now offer a walk-in clinic at Discount Drug Mart?

Services include treatment for:

- Allergies
- Cold and flu symptoms
- Earaches
- Eye conditions (pink eye, sty)
- Headaches
- Rashes/skin conditions
- Sinus infections
- Sore throats (strep throat testing)
- Sports physicals (\$39, cash or credit card only please)

### Open Seven Days a Week

Monday, Wednesday, Thursday Noon - 8 p.m.  
 Tuesday, Friday 8:30 a.m. - 4 p.m.  
 Saturday, Sunday Noon - 4 p.m.

### Payment Methods

Cash, credit card and most insurance plans accepted.

You do not need to be a MetroHealth patient to visit the walk-in clinic.

### MetroHealth at Discount Drug Mart

**Discount Drug Mart: Independence**  
 6160 Brecksville Rd., Independence, OH 44131  
 216-524-1835

**Discount Drug Mart: North Royalton Coming Soon**  
 5500 Wallings Rd., North Royalton, OH 44133  
 440-230-9100

**Discount Drug Mart: Olmsted Falls**  
 8191 Columbia Rd., Olmsted Falls, OH 44138  
 440-235-8787

**Discount Drug Mart: Parma Heights**  
 6476 York Rd., Parma Heights, OH 44130  
 440-845-6800

For your convenience, schedule online, or walk in! Discount-DrugMart.com

### MetroHealth Pharmacy Locations

Manage and refill your existing prescriptions online at [metrohealth.org/pharmacy](http://metrohealth.org/pharmacy)

One phone number for all of your pharmacy needs **216-957-MEDS (6337)**

**MetroHealth Bedford Medical Offices**  
 19999 Rockside Road, Bedford, OH 44146  
 Monday - Friday: 9 a.m. - 5 p.m.

**MetroHealth Brecksville Health & Surgery Center**  
 9200 Treeworth Blvd., Brecksville, OH 44147  
 Opening Fall 2016

**MetroHealth Broadway Health Center**  
 6835 Broadway Ave., Cleveland, OH 44105  
 Monday - Friday: 8 a.m. - 7 p.m.  
 Saturday: 10 a.m. - 2 p.m.

**MetroHealth Buckeye Health Center**  
 2816 East 116<sup>th</sup> St., Cleveland, OH 44120  
 Monday - Friday: 8 a.m. - 7 p.m.

**MetroHealth Cleveland Heights Medical Offices**  
 10 Severance Circle, Cleveland Hts., OH 44118  
 Monday - Friday: 8 a.m. - 7 p.m.  
 Saturday: 10 a.m. - 2 p.m.

**MetroHealth Medical Center**  
 Outpatient Plaza, 2500 MetroHealth Dr. Cleveland, OH 44109  
 Monday - Friday: 8 a.m. - 7 p.m.  
 Saturday: 10 a.m. - 2 p.m.

MetroHealth Employee Pharmacy  
 Monday - Friday: 7 a.m. - 7 p.m.

**MetroHealth Middleburg Heights November Family Health Center**  
 7800 Pearl Road, Middleburg Hts., OH 44130  
 Monday - Friday: 8 a.m. - 7 p.m.  
 Saturday: 10 a.m. - 2 p.m.

**MetroHealth Old Brooklyn Health Center**  
 Room SM 2 - 80, 4229 Pearl Road Cleveland, OH 44109  
 Monday - Friday: 8:30 a.m. - 5 p.m.

**MetroHealth Parma Medical Offices and Ambulatory Surgery Center**  
 12301 Snow Road, Parma, OH 44130  
 Monday - Friday: 9 a.m. - 5 p.m.

Spend less money on your medications and enjoy the convenience of having your medications delivered to your home! Talk to your provider about our Home Delivery Pharmacy Service.

### MetroExpressCare

MetroExpressCare providers are available to treat adults and children for:

- Cold and Flu Symptoms
- Ear, throat and sinus infections
- Sprains and strains
- Minor cuts and bumps
- Skin rashes

Check current wait times at [metrohealth.org/expresscare](http://metrohealth.org/expresscare)

Walk-ins welcome. Call **216-957-1680** for more information.

**Beachwood**  
 3609 Park East Dr., Suite 100 North Building  
 Beachwood, OH 44122  
 Monday - Friday 7:30 a.m. - 7:30 p.m.  
 Sunday 10 a.m. - 2 p.m.

**Broadway**  
 6835 Broadway Ave.  
 Cleveland, OH 44105  
 Monday - Friday 7:30 a.m. - 7:30 p.m.  
 Saturday 8 a.m. - 4 p.m.  
 Sunday 10 a.m. - 2 p.m.

**Brunswick**  
 1299 Industrial Parkway, Suite 250  
 Brunswick, OH 44212  
 Monday - Friday 2 p.m. - 6 p.m.

**Middleburg Heights**  
 7800 Pearl Road  
 Middleburg Heights, OH 44130  
 Monday - Friday 7:30 a.m. - 7:30 p.m.  
 Saturday 8 a.m. - 4 p.m.

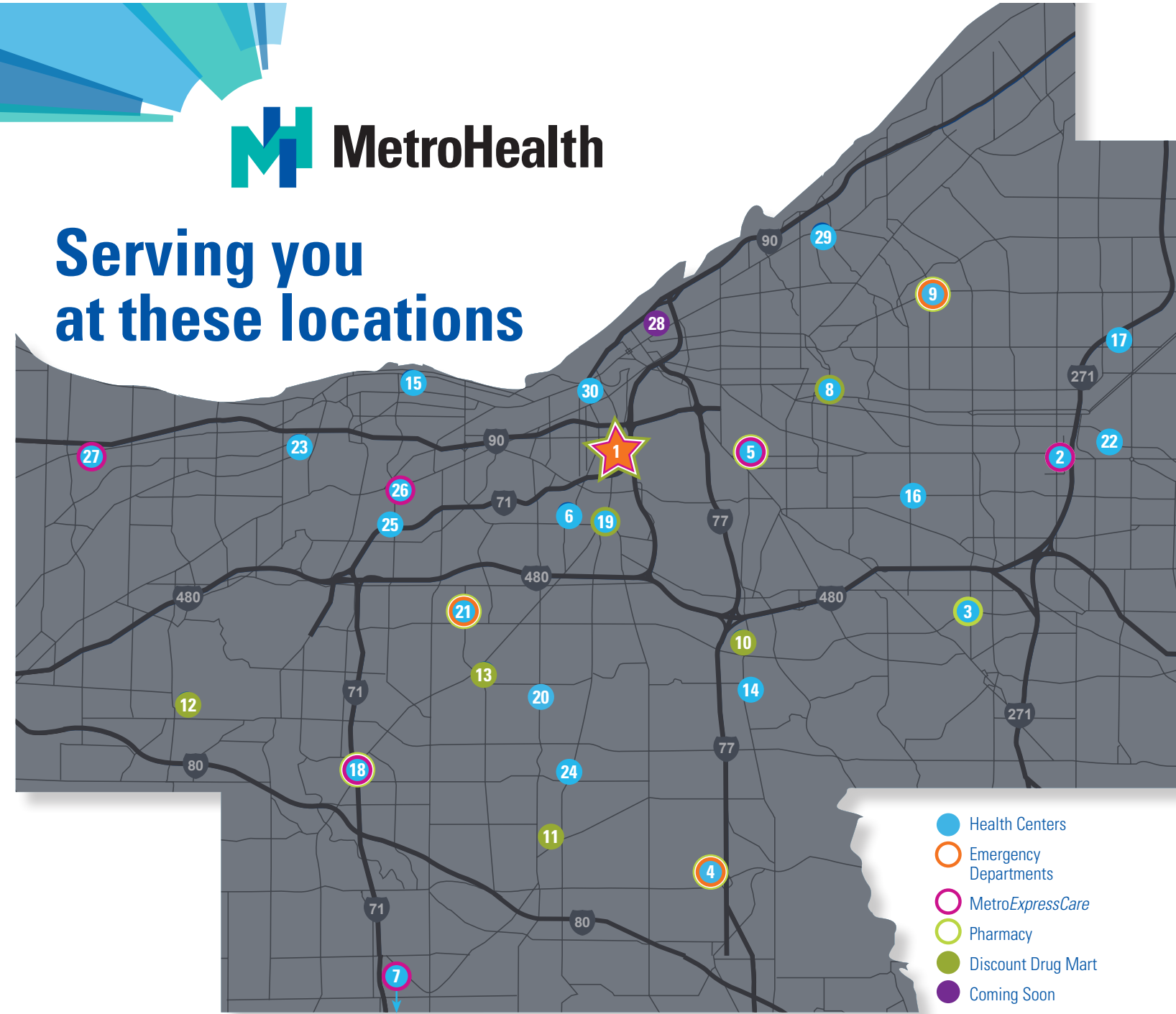
**West Park**  
 3838 West 150<sup>th</sup> St.  
 Cleveland, OH 44111  
 Monday - Friday 7:30 a.m. - 7:30 p.m.  
 Saturday 8 a.m. - 4 p.m.  
 Sunday 10 a.m. - 2 p.m.

**Westlake**  
 38 Main St., Suite 300  
 Westlake, OH 44145  
 Monday - Friday Noon - 7:30 p.m.

**Main Campus**  
 Pediatric MetroExpressCare services are available at our main campus location:  
 Monday - Friday 8 a.m. - 4 p.m.



## Serving you at these locations



- Health Centers
- Emergency Departments
- MetroExpressCare
- Pharmacy
- Discount Drug Mart
- Coming Soon

- 1 MetroHealth Medical Center Main Campus
- 2 MetroHealth Beachwood Health Center
- 3 MetroHealth Bedford Medical Offices
- 4 MetroHealth Brecksville Health & Surgery Center
- 5 MetroHealth Broadway Health Center
- 6 MetroHealth Brooklyn Health Center
- 7 MetroHealth Brunswick Health Center
- 8 MetroHealth Buckeye Health Center
- 9 MetroHealth Cleveland Heights Medical Offices
- 10 Independence
- 11 North Royalton – Coming Soon
- 12 Olmsted Falls
- 13 Parma Heights
- 14 MetroHealth Independence Health Center
- 15 MetroHealth Lakewood Health Center
- 16 MetroHealth Lee-Harvard Health Center
- 17 MetroHealth Lyndhurst Health Center
- 18 MetroHealth Middleburg Heights November Family Health Center
- 19 MetroHealth Old Brooklyn Health Center
- 20 MetroHealth Parma Health Center
- 21 MetroHealth Parma Medical Offices and Ambulatory Surgery Center
- 22 MetroHealth Pepper Pike Health Center
- 23 MetroHealth Rocky River Medical Offices
- 24 MetroHealth State Road Family Practice
- 25 MetroHealth West 150<sup>th</sup> Health and Surgery Center
- 26 MetroHealth West Park Health Center
- 27 MetroHealth Westlake Health Center at Crocker Park
- 28 Parker Hannifin Downtown YMCA (Coming Soon)
- 29 J. Glen Smith Health Center
- 30 Thomas F. McCafferty Health Center

Operating in conjunction with the Cleveland Department of Public Health (in partnership with the city of Cleveland).

For a listing of health centers and physicians nearest you, please visit our website: [metrohealth.org/locations](http://metrohealth.org/locations)



# You're Close to Great Care

## 1. MetroHealth Medical Center Main Campus

2500 MetroHealth Dr.  
Cleveland, OH 44109

216-778-7800

### Pediatric MetroExpressCare

216-957-1680 for minor illnesses and injuries

Dental: 216-957-1850

Pharmacy: 216-957-MEDS (6337)

## 2. MetroHealth Beachwood Health Center

3609 Park East Dr., 3rd Floor  
North Building  
Beachwood, OH 44122

216-957-9959

### MetroExpressCare 216-957-1680

for minor illnesses and injuries

**Services include:** adolescent medicine; advanced gynecology; audiology; bone density scan; cardiology; child psychiatry; digital mammography with Tomosynthesis (3D); ENT (ear, nose and throat); family medicine; gynecologic oncology; internal medicine; internal medicine-pediatrics; neurology; nutrition, OB/GYN; orthopaedics (hand); pain management; pediatrics; physical medicine and rehabilitation; physical therapy; plastic surgery; podiatry; psychiatry; pulmonary; radiology; rheumatology; spine center; urology and ultrasound

## 3. MetroHealth Bedford Medical Offices

19999 Rockside Road  
Bedford, OH 44146

216-524-7377

Pharmacy: 216-957-MEDS (6337)

**Services include:** internal medicine; pediatrics; psychiatry; nutrition and lab services

## 4. MetroHealth Brecksville Health & Surgery Center

9200 Treeworth Blvd.  
Brecksville, OH 44147

216-957-9000

### Coming Soon!

Pharmacy: Opening  
September 12, 2016

**Services include:** allergy; behavioral health; cardiology, including cardiac stress testing and echocardiograms; dermatology; ear, nose and throat

services; emergency services; general surgery; geriatrics; gastroenterology; laboratory services; neurology; OB/GYN; ophthalmology; orthopedics; pain management; pediatrics; plastic surgery; pharmacy; physical medicine and rehabilitation; podiatry; primary care; pulmonary; radiology; rheumatology; urology; and vascular services

## 5. MetroHealth Broadway Health Center

6835 Broadway Ave.  
Cleveland, OH 44105

216-957-1500

### MetroExpressCare 216-957-1680

for minor illnesses and injuries

Dental: 216-957-1850

Pharmacy: 216-957-MEDS (6337)

**Services include:** cardiology; CT Scan; dentistry; dermatology; endocrinology; family medicine; family planning; gastroenterology (adult and pediatric); lab; neurology; nutrition services; OB/GYN; ophthalmology; optometry; podiatry; psychiatry; pulmonary; pulmonary testing; radiology; rheumatology; ultrasound; weight management and WIC

## 6. MetroHealth Brooklyn Health Center

5208 Memphis Ave.  
Cleveland, OH 44144

216-398-0100

**Services include:** cardiology; family medicine; family planning; internal medicine; internal medicine-pediatrics; neurology; nutrition services; OB/GYN; pediatrics; pulmonary; sleep medicine; social work and WIC

## 7. MetroHealth Brunswick Health Center

1299 Industrial Parkway North  
Suite 250  
Brunswick, OH 44212

216-957-1450

### MetroExpressCare 216-957-1680

for minor illnesses and injuries

**Services include:** colorectal surgery consults/follow-up; dermatology; general surgery consults/follow-up; internal medicine; MetroExpressCare; pediatrics and rheumatology

MetroHealth is home to Cuyahoga County's first verified Level I Adult Trauma Center and Level II Pediatric Trauma Center, and is one of two verified adult and pediatric burn centers in the state of Ohio.

Every year, The MetroHealth System sees more than one million patients at its main campus hospital and network of more than 20 health centers throughout the county. MetroHealth also provides care at four Discount Drug Marts and at more than 40 additional sites in Cuyahoga County through community partnerships such as the School Health program with the Cleveland Metropolitan School District.

MetroHealth's mission is, "Leading the way to a healthier you and a healthier community through service, teaching, discovery and teamwork."

## 8. MetroHealth Buckeye Health Center

2816 East 116<sup>th</sup> St.  
Cleveland, OH 44120

216-957-4000

Pharmacy: 216-957-MEDS (6337)

**Services include:** allergy and immunology; cardiology; chronic disease management for asthma; diabetes; family planning; internal medicine; lab; nephrology; neurology; nutrition services; OB/GYN; obesity and weight management; ophthalmology; pediatric rapid access; pediatrics; pharmacy; podiatry; pulmonary; radiology (including mammography); senior health and smoking cessation; social work and WIC

## 9. MetroHealth Cleveland Heights Medical Offices

10 Severance Circle  
Cleveland Heights, OH 44118

216-524-7377

Pharmacy: 216-957-MEDS (6337)

Emergency Department  
216-957-0900

**Services include:** 24/7 emergency services; allergy; cancer infusion services/chemotherapy; cardiology; dermatology; endocrinology; eye/ophthalmology; gastroenterology; general surgery; lab; nephrology; neurology; OB/GYN; oncology; orthopaedics; otolaryngology/ENT; pain management; physical therapy; podiatry; primary care for adults and children; psychiatry; pulmonology; radiology; rheumatology and urology

## MetroHealth at Discount Drug Mart

### 10. Independence, OH 44131

6160 Brecksville Road  
216-524-1835

### 11. North Royalton, OH 44133 Coming Soon

5500 Wallings Road  
216-230-9100

### 12. Olmsted Falls, OH 44138

8191 Columbia Road  
440-235-8787

### 13. Parma Heights, OH 44130

6476 York Road  
440-845-6800

metrohealth.org/discount-drugmart

**Services include:** walk-in clinic for allergies; cold and flu symptoms; earaches; eye conditions (pink eye, sty); headaches; rashes/skin conditions; sinus infections; sore throats and sports physicals

## 14. MetroHealth Independence Health Center

6595 Brecksville Road  
Independence, OH 44131

216-520-2045

**Services include:** cataract and glaucoma specialty; children's eye exams; complete eye exams; glasses and contact lenses; industrial eye emergencies; medical and surgical treatment of eye disease

## 15. MetroHealth Lakewood Health Center

14701 Detroit Ave., Suite 400  
Lakewood, OH 44107

216-227-1330 (pediatrics)

## 16. MetroHealth Lee-Harvard Health Center

4071 Lee Road, Suite 260  
Cleveland, OH 44128

216-957-1200

**Services include:** cardiology; dentistry; family medicine; family planning; internal medicine; lab; nutrition services; OB/GYN; pediatrics and social work

## 17. MetroHealth Lyndhurst Health Center

Brainard Place Medical Center  
29001 Cedar Road, Suite 518  
Lyndhurst, Ohio 44124

216-778-5791

**Services include:** audiology; ear, nose & throat (ENT); general surgery; hand and upper extremity care; neurosurgery; occupational therapy; orthopaedics; plastic surgery; podiatry; radiology; spine care; urology

## 18. MetroHealth Middleburg Heights November Family Health Center

7800 Pearl Road  
Middleburg Heights, OH 44130

216-957-9700

### MetroExpressCare 216-957-1680,

for minor illnesses and injuries

Pharmacy: 216-957-MEDS (6337)

**Services include:** allergy and immunology; dermatology; ENT (ear, nose and throat); free valet parking; gastroenterology; geriatrics; gynecologic oncology; gynecology; heart and vascular – with onsite heart testing; lab; mammography with Tomosynthesis (3D); MetroExpressCare; neurological surgery; neurology; OB/GYN; open MRI; ophthalmology; optometry; orthopaedics; pediatric allergy & immunology; pediatric cardiology; pediatric gastroenterology; pediatric neurology; pediatric ophthalmology; pediatric rheumatology; pediatrics; physical and occupational therapy; physical medicine and rehabilitation; plastic surgery; podiatry; primary care; psychiatry; pulmonary; radiology - CT scanner; rheumatology; sleep medicine; spine center; urology and weight management

## 19. MetroHealth Old Brooklyn Health Center

4229 Pearl Road  
Cleveland, OH 44109

216-957-2000

## Senior Health Outpatient Program 216-957-2100

## MetroHealth Rehabilitation Institute of Ohio 216-957-3500

Pharmacy: 216-957-MEDS (6337)

Prime 55+ Program: 216-957-2800

**Services include:** advanced gynecology; audiology/ENT (ear, nose and throat); bone density scan; cardiology (including arrhythmia, heart failure and echocardiography); dentistry; dermatology; gastroenterology; geriatrics; gynecology; nephrology; neurological and pediatric physicals; neurology; nutrition; occupational and speech therapy; ophthalmology; pharmacy; physical medicine & rehabilitation; podiatry; primary care; pulmonology; radiology; rheumatology; vascular surgery and wheelchair assessment clinic

## 20. MetroHealth Parma Health Center

6820 Ridge Road, Suite 201  
Parma, OH 44129

440-888-3200

**Services include:** primary care, internal medicine

## 21. MetroHealth Parma Medical Offices and Ambulatory Surgery Center

12301 Snow Road  
Parma, OH 44130

216-524-7377

Pharmacy: 216-957-MEDS (6337)

Emergency Department  
216-957-0900

**Services include:** allergy; ambulatory surgery; cancer infusion services/chemotherapy; cardiology; dermatology; endocrinology; gastroenterology; general surgery; geriatric medicine; lab; nephrology; neurology; physical therapy; OB/GYN; oncology; ophthalmology; orthopaedics; otolaryngology/ENT; pain management; podiatry; primary care for adults and children; psychiatry; pulmonology; radiology; rheumatology and urology

## 22. MetroHealth Pepper Pike Health Center

29125 Chagrin Blvd., Suite 110  
Pepper Pike, OH 44122

216-591-0523

**Services include:** aesthetic services; cosmetic dermatology; dermatology (including Mohs micrographic surgery); plastic and reconstructive surgery; surgical oncology and treatment of advanced skin conditions including melanoma

## 23. MetroHealth Rocky River Medical Offices

20575 Center Ridge Road  
Rocky River, OH 44116

216-957-3200

**Services include:** internal medicine

## 24. MetroHealth State Road Family Practice

12744 State Road  
North Royalton, OH 44133

440-582-1484

**Services include:** family medicine

## 25. MetroHealth West 150<sup>th</sup> Health and Surgery Center

4330 West 150<sup>th</sup> St.  
Cleveland, OH 44135

216-251-6990

**Outpatient surgery:** advanced gynecology; dentistry; endoscopy; ENT (ear, nose and throat); general surgery; gynecology; ophthalmology; oral surgery; orthopaedics; pain management; pediatric ophthalmology; physical medicine and rehabilitation; plastic and reconstructive surgery; podiatry and urology

**Services include:** advanced imaging wide-bore high field MRI; audiology; CAT Scan; Comprehensive Breast Center featuring digital mammography with Tomosynthesis (3D) and dedicated patient navigator with on-site access to breast surgeons; ENT (ear, nose and throat); family planning; OB/GYN; occupational therapy; oncologists and plastic surgeons; ophthalmology; optometry; orthopaedics (hand); pain management; physical medicine and rehabilitation; physical therapy; plastic and reconstructive surgery; pre-surgical evaluation; spine care; ultrasound and radiology and urology/gynecology

## 26. MetroHealth West Park Health Center

3838 West 150<sup>th</sup> St.  
Cleveland, OH 44111

216-957-5000

**MetroExpressCare 216-957-1680**  
for minor illnesses and injuries

**Services include:** cardiology; family medicine; internal medicine; internal medicine pediatrics; lab; neurology; nutrition services; pediatrics; pulmonary/sleep medicine; radiology; rheumatology; social work and urology

## 27. MetroHealth Westlake Health Center at Crocker Park

38 Main St., Suite 300  
Westlake, OH 44145

216-957-3200

**MetroExpressCare 216-957-1680**  
for minor illnesses and injuries

**Services include:** allergy; behavioral health; cardiology; concussion clinic; cosmetics and laser treatments; dermatology; ENT (ear, nose and throat); nutrition counseling; OB/GYN; pain management; pediatrics; plastic surgery; primary care; pulmonary/sleep medicine; radiology; spine center and sports medicine/musculoskeletal

## 28. Parker Hannifin Downtown YMCA

1301 East 9<sup>th</sup> St.  
Cleveland, OH 44114

**Services Coming Soon**

**Operating in conjunction with the Cleveland Department of Public Health (in partnership with the city of Cleveland):**

## 29. J. Glen Smith Health Center

11100 St. Clair Ave.  
Cleveland, OH 44108

216-957-5600

**Services include:** family planning; internal medicine-pediatrics; nutrition services; OB/GYN; psychiatry; social work and WIC

## 30. Thomas F. McCafferty Health Center

4242 Lorain Ave.  
Cleveland, OH 44113

216-957-4848

Physicians and staff speak English and Spanish.

**Services include:** cardiology; family medicine; nutrition services; OB/GYN; pediatrics; Pride Clinic (providing care that respects the unique health care needs of the lesbian, gay, bisexual and transgender community); psychiatry; social work and WIC