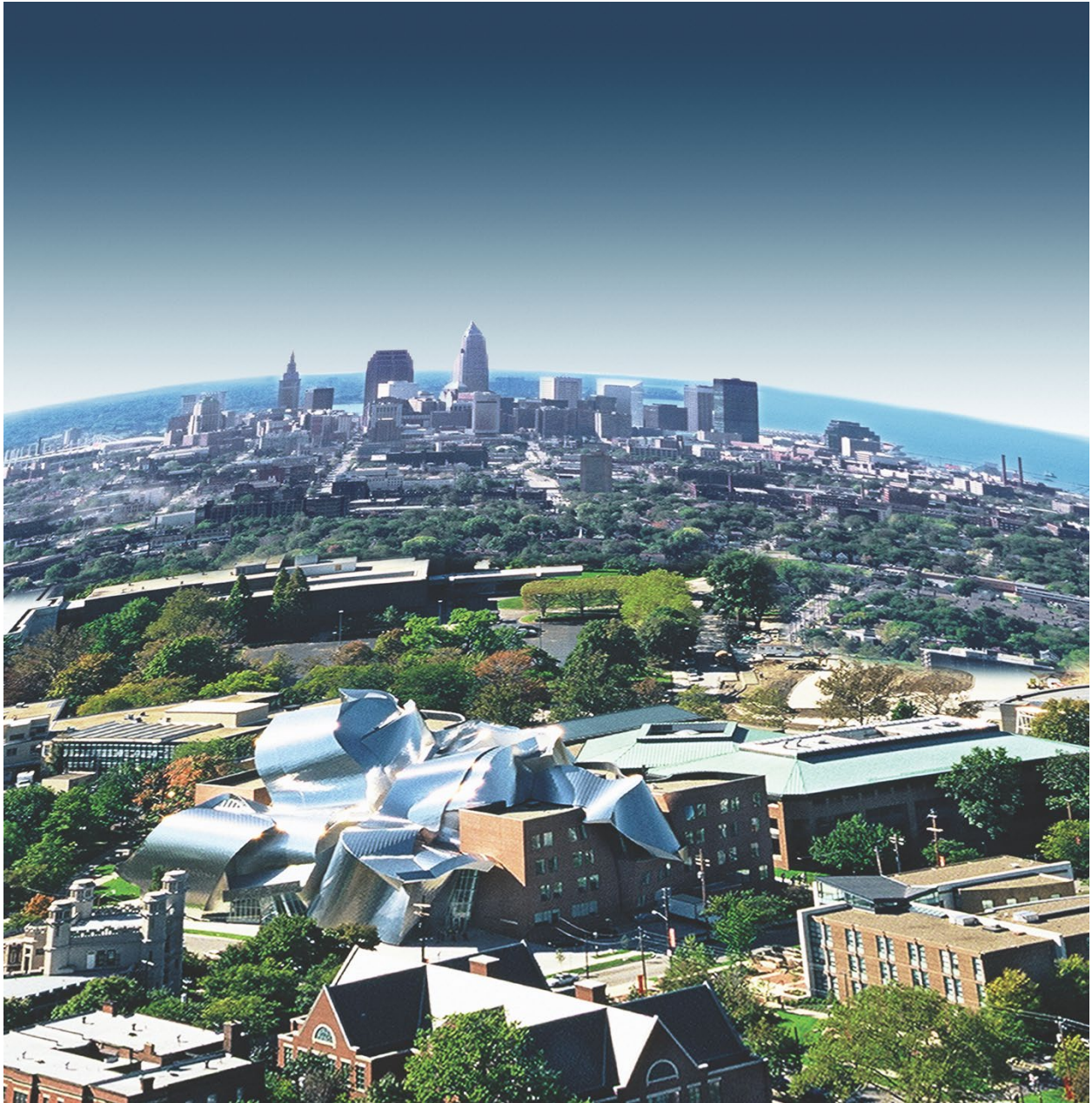




CASE WESTERN RESERVE
UNIVERSITY EST. 1826

think beyond the possibleSM



EXCHANGE STUDENT GUIDE BOOK

Fall 2019 & Academic Year 2019-20



CASE WESTERN RESERVE UNIVERSITY

EST. 1826

About Us

Case Western Reserve University (CWRU) is an urban private university located in Cleveland, Ohio. CWRU is known for its world-class research and emphasis on innovation and experiential learning.

Case School of Engineering

- 15th in Biomedical Engineering
- Home to think[box], one of the largest university-based innovation centers in the world

School of Law

- 5th in Health Law
- 14th in International Law

School of Medicine

- Ranks among nation's best funded medical schools
- 11 Nobel laureates in medicine with ties to the school

School of Dental Medicine

- 25th of U.S. dental schools in NIDCR grant funding received (2017)

Weatherhead School of Management

- 10th in breadth of alumni network
- First to develop Doctor in Management program and first to implement PhD programs in organizational behavior and operations management

Frances Payne Bolton School of Nursing

- 6th among more than 400 accredited master's programs

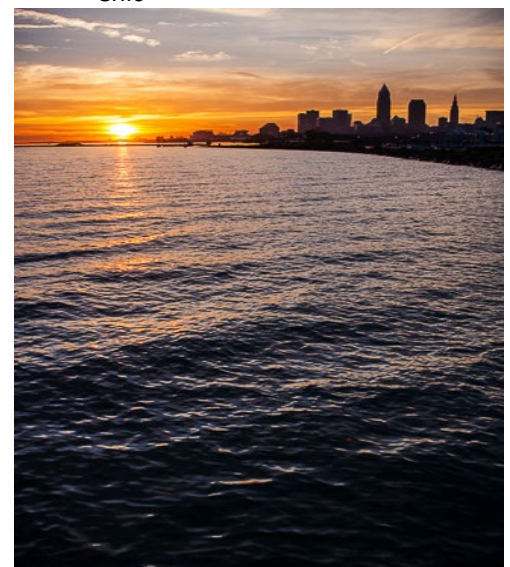
Jack, Joseph, and Morton Mandel School of Applied Social Sciences

- Among top 10 social work schools in the country
- 9th ranked MSSA program in the U.S.

College of Arts and Sciences

- 16 Nobel laureates in the sciences

- 28th among all U.S. universities
- 146th in the world
- 13th in federal funding for private university science and research
- \$337M in external research funding to CWRU (FY 2017)
- \$337.4M spent on research in 2014
- 30 intramural and club sports and over 200 academic and recreational student clubs
- Top 25 LGBT-Friendly Colleges and Universities
- Top 25 Smartest Colleges in America
- Top 25 Colleges where Geek is Chic



Lake Erie Waterfront

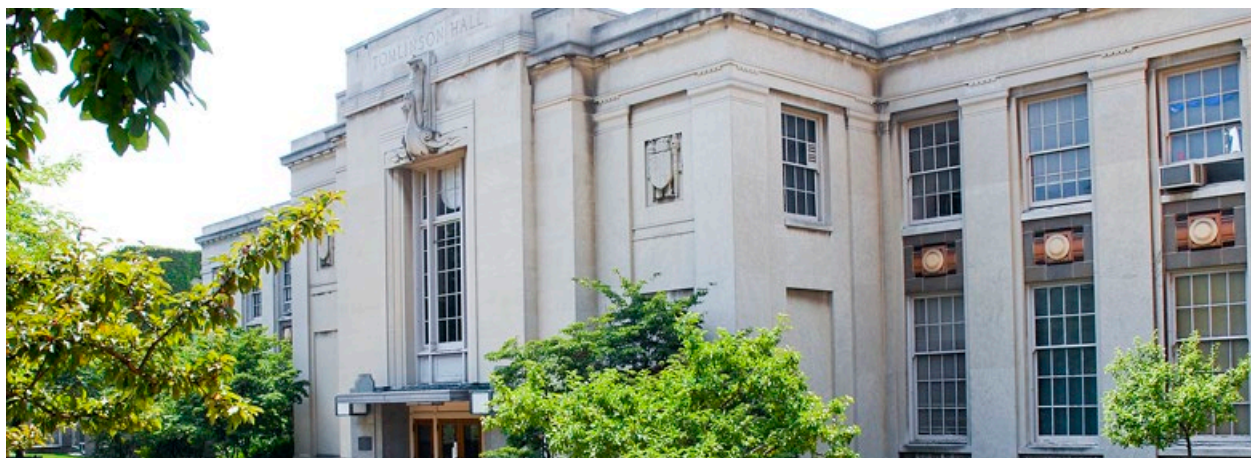
Lake Erie Waterfront



DISCOVER WEEK

Discover Week is meant to smooth your transition to Case Western Reserve University by introducing you to campus, Cleveland, and new friends before the start of the semester. Classes will begin on August 26, 2019, with Discover Week starting on August 18. If you intend to live on campus, you can start arriving on August 15th but will need to arrive no later than August 18. A matriculation fee or approximately \$575 for orientation will be added to your billing statement.

Visit the new student Roadmap (<https://case.edu/firstyear/orientation/transfer-exchange-student-roadmap>) for the latest details on Discover Week and Orientation.



Top Left: Students on DiSanto Field Top Right: CWRU Orientation Leaders
Bottom: Center for International Affairs, Tomlinson Hall



COURSE SCHEDULE

You must enroll in a minimum of 12 credit hours (per semester) to maintain full-time student status. You can search the Schedule of Classes (SOC) on the Registrar's webpage to begin planning your schedule.

In general, 400 level courses and above are graduate level courses and are not available to students participating in exchange programs.

The university's schedule of courses can be found here: <https://case.edu/registrar/registration/schedule-of-classes/>

COURSE REGISTRATION

You will register for classes through the Student Information System (SIS), www.sis.case.edu, using your CWRU Network ID and password. Prior to registering for classes, Dean Claudia Anderson must release your Advising Hold. Dean Anderson will be your contact for all academic and scheduling concerns. She can be contacted by email (claudia.anderson@case.edu) or by phone (+001 216-368-2928). Registration for the spring will open on November 28, 2017. To avoid being closed out of your desired courses, contact Dean Anderson as soon as possible. If you wish to take classes which have prerequisites and/or are closed (i.e. at full capacity), you will need to contact the instructors of those courses directly to request permission. If prerequisites are required to take a particular course, the professor teaching the course will need to know your academic background. Granting access to courses is at the discretion of the instructor and cannot be guaranteed.

Special consideration: If the closed/pre-requisite course you wish to take is in the Weatherhead School of Management (WSOM), you must request permission from Tiffany Welch, the Assistant Dean (tiffany.welch@case.edu), not the individual faculty member.



THE NEW STUDENT ROADMAP



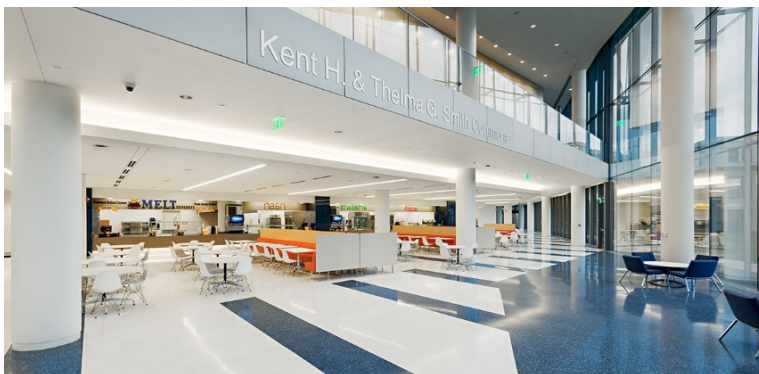
Above: Students walk across Case Western Reserve University campus.

The new student Roadmap (<https://case.edu/firstyear/orientation/transfer-exchange-student-roadmap>) is designed to help you prepare for your arrival on campus. The Roadmap will guide you through all the various tasks required of new students, including selecting housing, meal plan preferences, and registering for classes. In order to begin using the Roadmap, you will need to activate your CWRU network ID (instructions are in a separate letter). The Roadmap is available now with certain items set to open throughout the summer. Use this guidebook to familiarize yourself with your options, then make your selections later via the Roadmap.

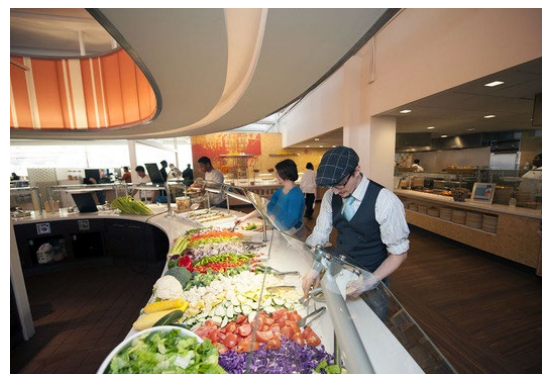
MEAL PLAN

Students who live on campus can have meals in campus dining halls. If desired, you will sign up for a meal plan as part of your housing application. The cost of the meal plan will vary depending on the plan you choose. Students on the Case Western Reserve meal plan are permitted to dine at a variety of locations on campus including Leutner and Fribley dining halls, Grab-It and Bag-It, Tomlinson Café, and Tinkham Veale University Center restaurants. Information and pricing:

<https://www.case.edu/dining/meal-plans/meal-plan-options/>



Tinkham Veale University Center dining featuring Melt, Cool Bean, Naan, Pinzas, 8Twenty6, and Michelson & Morley



Leutner Dining Hall, North Residential Village



Students move into CWRU North Residential Village

ACCOMMODATIONS

There are a variety of housing options available for students studying at Case Western Reserve University. You may choose to live in university-owned housing or in off-campus, privately-owned housing. Whichever you choose, you must secure housing before you arrive in the United States.

UNIVERSITY-OWNED HOUSING

University-owned housing options for upper-class students include North and South Campus Residence Halls, the Village at 115th, North Property Management Apartments, the Apartments at 1576, and the Triangle Apartments. Details of these options are available at housing.case.edu. Students who wish to live in university housing can request placement through the New Student Checklist - when it becomes available. Please contact both the University Housing Office (housing@case.edu or +001 216-368-3780) and the Orientation Office (firstyearexperience@case.edu) for more information.



Top (Left to Right): The Village at 116th; Pierce Dorm in North Residential Village; The Apartments at 1576
Bottom (Left to Right): Single room in South Residential Village; Common room in the Village at 116; Suite kitchen in the Village at 116th

OFF CAMPUS HOUSING

Students also have the option to live off-campus in the University Circle area. Numerous off-campus options are available for you to explore. The Uptown Apartments, located minutes away from campus with convenient access to Uptown's many shops and restaurants, are particularly popular. If you are interested in living off-campus you can search ALOHA, the Off-Campus Housing Listing Service available online: <http://students.case.edu/services/aloha/>. Students living off-campus move into their housing at the discretion of their housing agency.



UNIVERSITY CIRCLE

Located conveniently in the center of CWRU's campus, University Circle- Cleveland's cultural district--offers residents a variety of restaurants, shops, and easy access to RTA and HealthLine public transportation stops.



LITTLE ITALY

Within walking distance of CWRU, Historic Little Italy is known for its art galleries and fine Italian cuisine. There is always something going on in Little Italy, such as live entertainment, art walks, parades, and the Feast of the Assumption.



SHAKER SQUARE

Located where the city of Cleveland intersects Shaker Heights, one of the many historic suburbs, Shaker Square is the oldest shopping district in Ohio. Rapid transit lines run directly from the square to downtown, the waterfront, and the airport. In this area, you will have over 4,000 high quality rental units to choose from.



COVENTRY VILLAGE

Coventry Village is a diverse neighborhood home to eclectic shops and eateries including record stores, book vendors, consignment shops, bars, and music venues, all just minutes from campus!

EXPLORE CLEVELAND, OHIO

The Greater Cleveland metropolitan area is home to:

- The 29th largest population in the country
- The 27th highest GDP in the country
- The world-renowned Cleveland Clinic Health System
- Numerous museums, including the Rock and Roll Hall of Fame and the Cleveland Museum of Art
- University Circle, the most cultured square mile in the United States
- Playhouse Square, the nation's 2nd largest theater district after New York City
- Four professional sports teams, including the Cavaliers and Indians
- The Cleveland Orchestra, the 7th ranked symphony orchestra in the world
- The Lake Erie waterfront and nightlife of the flats
- The Bronze Medal for a Bicycle Friendly City from the League of American Bicyclists
- The Cleveland Metroparks which spans over 21,000 acres



Top Left: Progressive Field, home of the Cleveland Indians
Bottom Left: Cleveland Skyline

Top Right: East 4th Street Downtown Cleveland
Bottom Right: The West Side Market



Wade Lagoon

UNIVERSITY CIRCLE ATTRACTIONS:

Cleveland Natural History
Museum

Cleveland Museum of Art

MOCA Cleveland

The Western Reserve
Historical Society

The Dietrich Museum

Cleveland Botanic Gardens

Maltz Performing Arts
Center

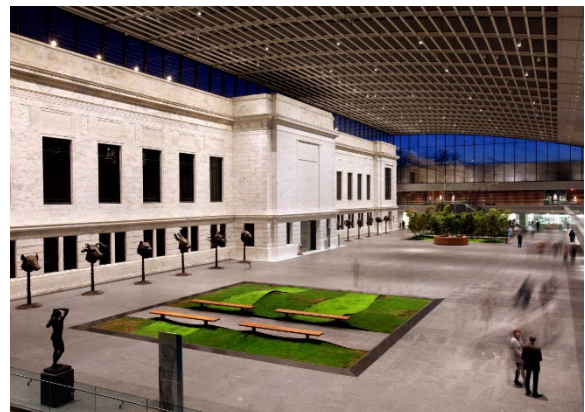
Severance Hall

Wade Lagoon

...as well as a variety of
shops and restaurants!

LIVING IN UNIVERSITY CIRCLE

University Circle is a dynamic modern arts and cultural district. Home to a variety of museums, excellent restaurants, coffee shops, and festivals, there is always something to do in University Circle. Wade Oval hosts year-round outdoor programming including live concerts, movie nights, art walks, parades, and ice skating.



Left: Severance Hall (Top) ; Wade Oval Wednesdays (Bottom)

Right: Cleveland Museum of Art (Top) ; Wade Oval Ice Rink (Bottom)

STUDENT CLUBS AND ORGANIZATIONS

CULTURAL

African American Society
African Students Association
Asian American Alliance
Asian Pacific American Medical Association
Black Law Students Association
Café Francais
Case Iranian Society
Chabad Student Group
Chinese Culture Club
Chinese Students and Scholars Association
CWRU Taiwanese Student Association
Der Deutsche Verein (German Club)
Eastern European Culture Club
Ethnic Eats
Filipino Student Union
Hindu YUVA
Indian Graduate Student Association (Satrang)
Intercultural Dialogue Group
International Club
International Student Fellowship
Israel's CWRU
JapanCASE
Korean Student Association, Undergraduate
Korean Graduate Students Association
La Alianza (LaNA)
La Dolce Vita: The Italian Club of CWRU
Middle Eastern Cultural Association (MECA)
Muslim Student Association
Pakistani Student Association
Roleplaying Games Club
Saudi Students at CWRU
Student Community at Covenant
South Asian Law Student Association
Taiwanese American Students Association
Thai Student Association
The International Multicultural Exchange
Undergraduate Indian Students Association
Union of Turkish Students at CWRU
Vietnamese Student Association
Weatherhead Multicultural Club

RELIGIOUS

Chinese Christian Student Fellowship
Chinese Speaking Christian Ministry
Christians on Campus
Covenant Student Ministries
Cru
CWRU Unitarian Universalists
Hillel
Newman Catholic Student Association
United Protestant Campus Ministries
Voices of Glory
Young Life

ACADEMIC

Alpha Eta Mu Beta
Alpha Kappa Psi
American Institute of Aeronautics and Astronautics
American Institute of Chemical Engineers
American Medical Student Association
American Society of Civil Engineers
American Society of Mechanical Engineers
Anthropology Student Association
Association for Computing Machinery
Atlantis
Baja SAE
Biomedical Engineering Society
Case Consulting Group
Case Engineers Council
Case IEEE
Case Western Reserve University Geological Society
CWRU Undergraduate Consulting Club
Center for Inquiry
Cognitive Science Student Organization
CWRU Undergraduate Marketing Club
Daniel Hale-Williams Pre Med Society
Global Health Design Collaborative
Horizons at Case Western Reserve University
International Studies Society
Math Club
Medical Instrumentation for Nations under Development
National Student Speech Language Hearing Association
Ohio Collegiate Music Education Association
Phi Alpha Delta
Phi Delta Epsilon
Physics and Astronomy Club
Pre Dental Society
Pre-Physician Assistant Club
Pre-Veterinary Medical Association
Robotics Club
Rocket Team
Shadowing Case By Case
Society for Biomaterials
Society for Hispanic Professional Engineers
Society of Women Engineers
Student Dietetic Association
Ted^x at Case Western Reserve University
Theta Tau
The Weatherhead Fund
Undergraduate Bioethics Society
Undergraduate Macromolecular Student Organization
Undergraduate Materials Society
Undergraduate Military Science Club
Undergraduate Student Nurse's Association
Weatherhead Economics Society
Women in Science and Engineering Roundtable

STUDENT CLUBS AND ORGANIZATIONS

ATHLETIC

Badminton Club
Ballroom Dance Society
Bowling Club
Case Riding Team
Case Western Reserve University Judo Club
Croquet Club
Curling Club
CWRU Racquetball Club
Field Hockey
Figure Skating Club
Gym Buddies
Longboarders Club
Mixed Martial Arts Club
Rugby Football Club
Ski and Snowboard Club
Soccer Club
Spartan Running Club
Spikeball Club
Student Golfer's Association
Tennis Club
Wakeboard and Waterski Team
Water Polo Club

COMPETITIVE

Cheza Nzuri Dance Team
CobRAAS
CWRU College Trivia Club
Dhamakapella
Kismet Fusion Dance Team
Model United Nations
Nritya Dance Team
Poker Club
Quizbowl
Smash Club
Undergraduate Mock Trial

PERFORMANCE

Case Footlighters
Case In Point
Case Men's Glee Club
improvement
Mather Dance Collective
Music Undergraduate Student Involvement
Committee
Pep Band
Players' Theatre Group
Salsa Dance Club
Solstice
Spartan Dance Team
Spartan Tappers
Speakeasy A Cappella
Urban Elementz

CLUB SPORTS

Archery Club
Crew Club
CWRU Cricket Club
Cycling Club
Esports Club
Fencing Club
Ice Hockey
Kendo Club
Kung Fu Club
Lacrosse Club
Spartan Cheer
Table Tennis Club
Taekwondo Club
Ultimate Frisbee Club
Volleyball Club

SOCIAL SERVICE

Advocates for Cleveland Health
Alpha Phi Omega
Amnesty International CWRU
Art Forward
Autism Speaks U CWRU
Big Brothers Big Sisters at CWRU
Camp Kesem
Campus Canines for a Cure
Case EMS
Case for Sight
CWRU Boys and Girls Club
CWRU Music Therapy Club
CWRU Red Cross Club
Circle K International (USG)
Cleveland Public Schools Connection
Distressed Children & Infants International
Food Recovery Network
Girls Who Code at CWRU
Global Engineering Brigades
Global Medical Brigades
Habitat for Humanity
Humanitarian Design Corps
Kids Against Hunger Cleveland
MEDLIFE CWRU
National Alliance on Mental Illness CWRU
NAACP
Nightly Alliance for Protection of Sleep
Operation Smile University Club
Project Sunshine
She's the First*
Spartans for Special Olympics
SpartanTHON
Student Sustainability Council
The Outdoors Club
Theta Pi Sigma
Winterfest

SPECIAL INTEREST

A Book Club
Acts of Random Kindness
American Mock World Health Organization
Association for Computing Machinery Women's
student Chapter
Association of Women Surgeons
Big Games Club
Blue CWRU
Body Positivity Club
Case Amateur Radio Club
Case College Republicans
Case Democrats
Case Origami Circle
Case Peripatetic Group
Case Western Reserve Circus Club
Case Western Reserve University Ceramic Art Club
Chess Club
Climbing Club
Cracking the Case Mystery Book Club
CWRU Aviation Club
CWRU Photography Club
CWRU Science and Human Rights Coalition
CWRU Undergraduate Fetish Foundation
Design for America
Electronic Music Club
Fancy, Always Fancy
Firearms Club
HackCWRU
Hearthstone Cooperative
IMPULSE
International Law Society
Juggling Club
Mandel Allies
Medieval Combat Club
Military Science Club
CWRUCIO Quidditch
Radical Student Union
SCUBA Club
Sexual Assault and Violence Educators
Slow Food
Student Health Law Association
Students for a National Health Program
Swing Dance Club
Tau Sigma Military Dentistry Club
Tabletop Empire
Tea Club
The Feminist Collective
The Toastmasters Club
Writers Writing Words
Young Americans for Liberty

UNDERGRADUATE PROGRAMS OF STUDY

Through its three undergraduate schools and one college, Case Western Reserve University offers the following academic programs:

Accounting
Aerospace Engineering
Anthropology
Applied Mathematics
Applied Data Science
Art Education
Art History
Art Studio
Artificial Intelligence
Asian Studies
Astronomy
Banking and Finance
Biochemistry
Bioethics and Medical Humanities
Biology
Biomedical Engineering
Business (Management)
Chemical Biology
Chemical Engineering
Chemistry
Childhood Studies
Chinese
Civil Engineering
Classics
Cognitive Science
Communication Sciences
Computer Engineering
Computer Gaming
Computer Science
Creative Writing
Dance
Data Science and Analytics
Economics
Electrical Engineering
Electronics
Engineering Physics
Engineering (undesignated)
English
Entrepreneurial Studies
Environmental Geology
Environmental Studies
Ethics
Ethnic Studies
Evolutionary Biology
Film
Finance
French
Gerontological Studies
Health Communication
History
History and Philosophy of Science
International Studies
Italian
Japanese
Japanese Studies
Judaic Studies
Leadership
Marketing
Materials Science and Engineering
Mathematics
Mathematics and Physics
Mechanical Design and Manufacturing
Mechanical Engineering
Music (requires audition)
Music Education
Natural Sciences
Nursing
Nutrition
Nutritional Biochemistry and Metabolism
Origins Sciences
Philosophy
Physics
Political Science
Polymer Science and Engineering
Pre-Architecture
Psychology
Public Policy
Religious Studies
Russian
Social Work
Sociology
Spanish
Sports Medicine
Sports Nutrition
Statistics
Systems and Control Engineering
Systems Biology
Teacher Education
Theater
Women's and Gender Studies
World Literature

CWRU in Brief

Case Western Reserve University is a research-intensive university, one of only 26 private institutions in the prestigious AAU. We prepare ambitious, curious students for career, grad school, and life. We offer an experience-based undergraduate education, in the arts and sciences, engineering, management, and nursing. Graduate programs are also offered in law, medicine, dental medicine, and applied social sciences.

11:1 Student:Faculty

Ensures small classes (59% of classes have fewer than 20 students) and plentiful research opportunities.

Student Body

5,152 undergrads
6,674 graduate and professional students

CWRU students are from all 50 states and 81 countries

Who We Look For

CWRU looks for students who are intellectually curious, who have demonstrated success in challenging coursework, and who are involved in their communities and in extracurriculars of all kinds.