

Religiosity/Spirituality

2013 Your First College Year Survey

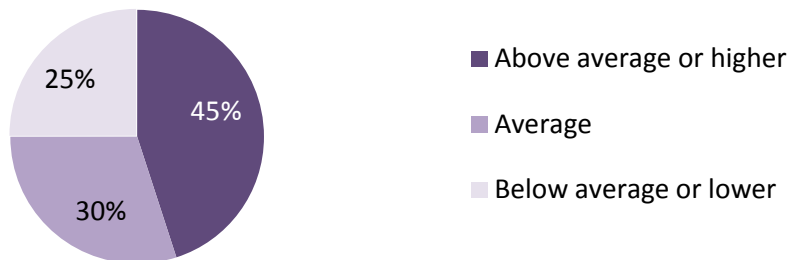
In spring 2013, we asked first-year students at Case Western Reserve University (CWRU) to participate in the *Your First College Year* survey. The survey was administered by the Higher Education Research Institute (HERI) at UCLA in conjunction with the Office of Planning and Institutional Research. Due to low response rates, the results should be interpreted with caution.¹ This report relates to students' religious and spiritual practices and beliefs.



Most 2012-13 first-year students said it was at least somewhat important to develop a meaningful philosophy of life (86%), and 59% said it was very important or essential. Almost half of students had attended a religious service during their first year of college (44%) and a little less than half rated their spirituality above average or higher compared to the average person their age (45%). Eighty-four percent (84%) of students discussed religion during their first year at CWRU, at least occasionally, and 31% said their religious beliefs/convictions had strengthened since entering college. Compared to first-year students in the private university comparison group, CWRU students:²

- Were no different in terms of the value they placed on developing a meaningful philosophy of life (at least somewhat important: 86% vs. 86%)
- Were no different in rating their level of spirituality (above average: 45% vs. 45%)
- Discussed religion less often (frequently: 24% vs. 34%)
- Were less likely to feel discriminated against because of their race, ethnicity, gender, sexual orientation, or religious affiliation (11% vs. 13%)

Figure 1. How would you rate your spirituality compared to the average person your age?



Additional Information

For additional information about this report, please contact Amanda Thomas at (216) 368-6119 or ast27@case.edu.

¹ Of the 1,336 students who received the survey, 27% (n=361) answered at least 50% of the questions. Compared to their peers, women, Asian/White, U.S. citizens, and students in non-management majors responded to the survey at significantly higher rates.

² The private university comparison group included Azusa Pacific University, Fordham University, Pepperdine University, University of the Pacific, Wake Forest University, and Worcester Polytechnic Institute.