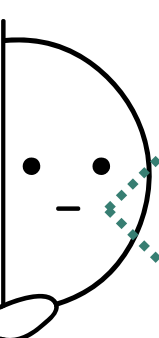


# DIGITAL SCHOLARSHIP NEWSLETTER

## BIG CHANGES ARE COMING IN THE FREEDMAN CENTER

The Freedman Center for Digital Scholarship is undergoing a redesign to better meet the needs of the campus community. We anticipate major changes to start in summer 2025 and to continue for several years. Here is how we're gathering information from the CWRU community:

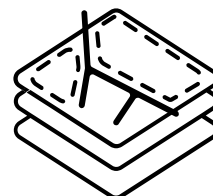
1. Small-group discussions with faculty, graduate students, and undergraduate students
2. Feedback from Freedman Fellows
3. User experience and satisfaction surveys



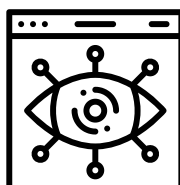
Want to shape the future of the Freedman Center? **Fill out our survey!** Respondents will be entered into a drawing for a \$25 gift card to Target AND will contribute to our redesign.

## DIGITAL SCHOLARSHIP BY THE NUMBERS

Last year, the Digital Scholarship team logged 940 interactions with the CWRU community. Here are the three most popular topics.



**GIS: 250**



**DATA VIZ:  
116**



**PROJECT  
DESIGN: 130**

# INTRODUCING THE 2024-2025 FREEDMAN FELLOWS

The Freedman Fellows program has been generously funded by the Freedman Fellows Endowment, established by Samuel B. and Marian K. Freedman, and managed by the Kelvin Smith Library.



**Erika I. Barcelos** is a Research Assistant Professor in the Department of Materials Science and Engineering in the Case School of Engineering. Her project leverages open-source datasets to investigate the relationship between population mortality and ambient temperature rates in the United States. The findings will be related and mapped to underrepresented communities locations such as red-lined areas.

**Ayesha Bell Hardaway** is a Professor of Law, and she serves as Director of the Law School's Social Justice Law Center and its Criminal Defense Clinic. Her project examines the legacy of Winston E. Willis to shed light upon the economic and geographical changes on Cleveland's East side that have affected minority business owners. The project will include oral histories on Willis's businesses and map Black-owned businesses on Euclid between 1960-1985.



**Clara Pelfrey** is a Professor in the School of Medicine, serving as Director of Program Evaluation for the Clinical and Translational Science Collaborative of Northern Ohio. Her project evaluates the leadership outcomes of the FLEX Leadership Development Program for Women Faculty in the School of Medicine by web-scraping social media websites like LinkedIn and analyzing them with LLM-powered tools.

# WELCOME CWRU JOURNAL OF ECONOMICS

The Spring Issue of the *CWRU Journal of Economics* is now available! The *Journal* is a student-led undergraduate economics publication in the Weatherhead School of Management that offers experiential learning and career development opportunities for economics students. The Spring Issue is the *Journal's* second ever publication and includes articles exploring a variety of topics in economics research, including inequality, education, and labor markets.



**ACCESS THE JOURNAL HERE**



Interested in hosting a journal on  
Scholarly Commons? Email  
**[scholarlycomm@case.edu](mailto:scholarlycomm@case.edu)**.



## SCHOLARLY COMMONS TOP DOWNLOADS, Q3

1

Jonna B. Blount, "Betting on Talent: Examining the Relationship between Employee Retention and Onboarding Programs"

2

Lars Mathiassen, "Designing Engaged Scholarship: From Real-World Problems to Research Publications"

3

Angela Clark-Taylor and Hannah Regan, "'We Make Do and We Are Creative:' A Report on the Status on Women and Gender Equity Centers"

4

Daniel Robey and Wallace T. F. Taylor, "Engaged Participant Observation: An Integrative Approach to Qualitative Field Research for Practitioner-Scholars"

5

Jeff Gold, "Nonprofit Fundraising and Social Identity"

# TECH LENDING TABLE REFRESH



The Freedman Center Loanable Equipment program provides continued technology support for academic and Digital Scholarship research communities. This summer, we redesigned the display table to better showcase the equipment. Additionally, the KSL website has a new look that allows you to browse offerings by category and look up availability in the catalog.



## QUICK TIPS FOR THE FC LAB



Have an iPhone? Use our software to convert HEIC images to JPGs and PNGs.



You can see what is on our computers at the [FC Software LibGuide](#).



We recently installed machine and deep learning libraries for ArcGIS! Come give them a try.



Want to see curated images from digital collections? Follow **@cwruDIGILab** on Instagram.



CASE WESTERN RESERVE  
UNIVERSITY  
Kelvin Smith Library

Freedman Center for  
Digital Scholarship

David Beales  
Jared Bendis  
Karen Caputo  
R. Benjamin Gorham  
Kate Ozment