



THE LAURA & ALVIN SIEGAL
LIFELONG LEARNING
PROGRAM



FOR THE LOVE OF LEARNING

FALL 2017
CATALOG

ABOUT THE SIEGAL LIFELONG LEARNING PROGRAM

The Siegal Lifelong Learning Program connects the academic world and Northeast Ohio's wider community. Through innovative and engaging programming, adults of all ages can pursue their love of learning. Classes, workshops, and lectures provide opportunities for participants to interact with internationally renowned scholars who share their cutting-edge research, and to engage in lively conversation about current topics of interest. For those who have never taken a class or attended a lecture—please join us. For those who have studied with Siegal Lifelong Learning before—welcome back!

REGISTRATION

Register Online

Register online through our secure site at case.edu/lifelonglearning

Register by Mail

Return the registration form on page 44 by mail to:

The Laura and Alvin Siegal Lifelong Learning Program
Case Western Reserve University
10900 Euclid Ave.
Cleveland, OH 44106-7116

Register by Phone

Call 216.368.2090 or
216.368.2091 (Beachwood office)
to register and pay with credit card by phone.

For the most up-to-date programming or weather alerts visit our website.

Financial assistance is available.

HOW TO REACH US

CWRU Campus

p 216.368.2090
f 216.368.1861

Beachwood Campus

p 216.368.2091
f 216.368.1003

email:

lifelonglearning@case.edu

website:

case.edu/lifelonglearning

Mailing Address

The Laura and Alvin Siegal
Lifelong Learning Program
Case Western Reserve University
10900 Euclid Ave.
Cleveland, OH 44106-7116

Landmark Centre Building
25700 Science Park Drive
Suite 100
Beachwood, OH 44122

Visitors and Deliveries

Thwing Center, Room 153
11111 Euclid Ave.
Cleveland, OH 44106-7116

CONTENTS

Message from the Director	2
Courses	
■ Art and Music	5
■ History and Culture	7
■ Holocaust Studies	12
■ Horticulture and Nature	13
■ Jewish Studies	14
■ Language: Hebrew	16
■ Literature	18
■ Politics and Contemporary Issues	24
■ Religion, Philosophy and Science	26
■ Writing	27
Lecture Series	
Eastside Conversations	28
Origins Science Scholars Program	30
Substance Abuse Series	32
Tribe Talk: New Jewish Conversations	33
Single Events and Lectures	34
Sponsors and Team	39
Programs	
Conversations at Judson Park	40
Eastside Conversations	40
Jewish Studies	40
Northeast Ohio Public Policy Series	40
Off-Campus Studies	40
Origins Science Scholars	40
Senior Scholars	41
University Farm Program	41
Registration Policies	42
Registration Form	43
Locations	45

Among its many offerings, the Siegal Lifelong Learning Program at CWRU includes Senior Scholars, Off-Campus Studies and Association for Continuing Education programs, and Jewish studies courses and lectures.



MESSAGE FROM THE DIRECTOR

Hard as it is to believe, this summer marks Siegal Lifelong Learning's fifth anniversary, and we are pleased to note our accomplishments during that period and excited to continue growing our programming to serve our community. Starting with under 2,000 participants in our program, we have now connected with over 4,000 individuals who have participated in hundreds of courses, lectures, and other educational programs. We are so grateful for your continued enthusiasm for lifelong learning, and we remain committed to providing you great programs with great faculty.

Reflecting on these past five years demands some words of thanks to the many individuals and organizations that enable our program to succeed. A great debt is owed to Laura and Alvin Siegal who had the vision to support Case Western Reserve University's foray into a broad-based lifelong learning program. The university, under President Barbara Snyder's leadership, boldly shared that outlook and encouraged our continued growth. We have also been supported from the outset by philanthropic contributions large and small, all critical for maintaining our progress.

The Association for Continuing Education also supports our operation, but more importantly, ACE shares our values to serve our lifelong learning constituents in Northeast Ohio. We look forward to continued collaboration.

Most importantly, I want to thank all of our instructors. They are the lifeblood of our program, and as I often say, no one gets rich teaching adult education. Our faculty participate because they are passionate about their teaching and they are committed to their students. It is their generosity of time and talent more than anything else that makes our program so successful.

We are excited to have you join us for the next five years and more!

A handwritten signature in black ink, appearing to read 'B. Amkraut', written in a cursive style.

BRIAN AMKRAUT
Executive Director



THE LAURA & ALVIN SIEGAL
LIFELONG LEARNING
PROGRAM

Current and interesting topics
Innovative and engaging programming
Internationally renowned teachers and scholars

BECOME A MEMBER OF SIEGAL LIFELONG LEARNING

Enjoy the benefits of learning.

Annual Membership Benefits Include:

- Discounted pricing on classes and events
- Priority registration
- Advance notice of programs
- Invitations to members-only special events
- Special behind-the-scenes tours
- Private meetings with high-profile, in-demand speakers
- Discounts at select community bookstores
- Discounted tickets to select Apollo's Fire concerts
- Free tote and magnet
- See our website for more member benefits

Individual Membership annual cost: \$36
Member Plus One annual cost: \$62

BECOME A MEMBER TODAY!

case.edu/lifelonglearning/membership/
or call **216.368.2090** or **216.368.2091**

SIEGAL SHOWCASE: EXPLORE THE POSSIBILITIES

Wednesday, August 30 | 5:30–7:30 p.m.

Meet the instructors who will be teaching courses at Siegal Lifelong Learning this fall. Explore your possibilities by attending this fun series of 10-minute session-samplings.

Refreshments will be served.

Member and Nonmember cost: free



SAMUEL FREEDMAN

Author, Columnist and Professor
at Columbia University

JEW VS. JEW REVISITED

Thursday, September 7 | 10–11:30 a.m.

In *Jew vs. Jew* (2000), award-winning author and journalist Samuel Freedman addressed American Jews' battles with each other around questions of identity, authenticity, politics and ideology. Now, American Jews remain divided more than ever, with Israel as a particular flashpoint of contention. Join Freedman as he reflects on where we have come and where we are headed.

Member of Lifelong Learning cost: free

Nonmember cost: \$5

Space is limited—Advanced registration required.

HAVE A LITTLE FAITH: WHY THE NEWS MEDIA GETS RELIGION WRONG

Thursday, September 7 | 7 p.m.

Never before has religion been a more significant and controversial part of public life in America—the most religious nation in the Western world. So why have journalists so often struggled to knowledgeably and incisively report on the role of faith in politics, education, foreign policy, and other areas? Are America's newsrooms anti-religious, innocently ignorant of religion, or something else?

Member of Lifelong Learning cost: free

Nonmember cost: \$5

Space is limited—Advanced registration required

With the generous support of the Enid and Irving Kushner Endowment Fund to Support Adult Jewish Education of the Jewish Federation of Cleveland

All events are held at
LANDMARK CENTRE—BEACHWOOD



FALL 2017
OPENING EVENTS

LEARN MORE or REGISTER at
case.edu/lifelonglearning or call 216.368.2090 or 216.368.2091

COURSES

Art and Music

CONTRIBUTIONS OF JEWISH IMMIGRANTS TO AMERICAN CLASSICAL MUSIC

Eric Kisch, Host, Musical Passions Program, 104.9 WCLV

Mondays, September 11–October 23
1–3 p.m.

Classical music in the United States is mostly an imported art form, and immigrants have had an immense influence in the growth and flourishing of this musical culture. From the beginning of the 20th century, Jewish immigrant artists—instrumentalists, singers, conductors and composers have made extraordinary contributions. In this course we will look at the life and work of Jewish immigrants in each of these four areas, using video and audio examples. A musical treat for all and an eye-opener to many.

Landmark Centre—Beachwood

Member of Lifelong Learning cost: \$90
Nonmember cost: \$110



SMALL JAZZ COMBOS

George Havens, Leader-Teacher, Off-Campus Studies

Thursdays, September 21–November 9
10:30 a.m.–noon

Historically, jazz started with small jazz groups and they had a major innovative role in the evolution of jazz over the past 100 years. Major contributors ranged from Jelly Roll Morton to Miles Davis. Material: Recorded examples and reference booklets

Hamlet Village Clubhouse

Member of Lifelong Learning cost: \$82
Nonmember cost: \$97

◆ Off-Campus Studies



THE ART OF SEEING

Jennie Jones, Professional Photographer

Tuesdays, September 12–October 3
6:30–8 p.m.

Thanks to a small chip, everyone today is a “photographer.” Through the study of western art from the early Renaissance until today, we will explore the visual development of “seeing” and “capturing” the world before us. We will learn the “tricks of the trade” from some of the world’s greatest masters. Today, digital photography has redefined the speed with which even your personal events can be globally viewed instantaneously. Whether you actively participate in photography or not, these sessions will enrich your own experience of truly seeing the world around you. The last session will explore Cleveland, featuring Jennie Jones’ own work.

Landmark Centre—Beachwood

Member of Lifelong Learning cost: \$60
Nonmember cost: \$75

COURSES

CLEVELAND MUSEUM OF ART GALLERY SERIES

Professional Staff

Session I: Tuesdays, October 3–November 7

Session II: Thursdays, October 5–November 9
1–2 p.m.

Please join us for this gallery talk series hosted by the distinguished Cleveland Museum of Art, one of Northeastern Ohio's principal civic and cultural institutions. This series will feature the special exhibitions on view this fall, including *The Jazz Age: American Style in the 1920s*. Presented by the museum's Department of Education and Academic Affairs.

Tours meet in the Atrium of the Art Museum lobby. Enrollment is limited to 28 per session.

Cleveland Museum of Art

Member of Lifelong Learning cost per session: \$75
Nonmember cost per session: \$90



JAZZ—FROM ITS ORIGINS TO THE PRESENT

Paul Ferguson, Senior Instructor,
Department of Music, CWRU

Wednesdays, October 11–November 15
1:30–3:30 p.m.

Jazz history is American history. Join us as we dig into the roots of jazz, its explosion in the 1920s and the swing era and its eventual transition into art music. Special emphasis on Jelly Roll Morton, Louis Armstrong, Duke Ellington, Miles Davis and even some music from the instructor.

Landmark Centre—Beachwood

Member of Lifelong Learning cost: \$115
Nonmember cost: \$135

✂ Senior Scholars Wednesdays



CONTEMPORARY JEWISH PHOTOGRAPHERS

Herb Ascherman, Photographer and Founder
of the Cleveland Photographic Workshop

Tuesdays, November 7–28
6:30–8 p.m.

Beginning with Alfred Stieglitz, who lived in the late 19th century, Jews have dominated the creative world of American photography. Join Herb Ascherman, founder of the Cleveland Photographic Workshop, for a survey of the most well-known (as well as some of the lesser-known) practitioners of the art and craft. Explore how the Jewish identity of these photographers may have influenced their work, as well as their larger influence.

Landmark Centre—Beachwood

Member of Lifelong Learning cost: \$60
Nonmember cost: \$75

HAMILTON

Cheryl Wires, Lecturer in Lifelong Learning, CWRU
Wednesdays, November 29–December 20
7–8:30 p.m.

In anticipation of the Broadway phenomenon, *Hamilton*, coming to Cleveland, we'll discuss selections from the libretto and the fascinating biography that inspired the musical, Ron Chernow's *Alexander Hamilton*. You don't need tickets to join this spirited four-week series.

Lakewood Public Library, Main

Member and Nonmember cost: free

Co-sponsored by the Lakewood Public Library

History and Culture

A DECADE OF TURMOIL AND TRANSITION: THE 1960s

Jim Lane, Leader-Teacher, Off-Campus Studies

Sundays, September 17–November 12

No class: September 24

5–6:30 p.m.

Put on your bell-bottoms and grab your granny glasses, tie-dyes and beads! Let's do a little back-to-the-future time travel to the seminal decade of the 1960s. Using a compilation of articles originally published in *The New Yorker*, we will re-examine the confrontations over civil rights, economics, Vietnam, and lifestyles. We will review the tragedies of the all too common assassinations and the problems and promises of psychedelics and protests. We will re-experience the highs of Telstar and Apollo 11 and the lows of poverty in *The Other America* and of the damage echoed in *The Silent Spring*. And we will review our fascination with the entertainment and cultural icons of the era. Book: *The 60s: The Story of A Decade*, *The New Yorker* (Henry Finder, editor)

Private Residence

Member of Lifelong Learning cost: \$82

Nonmember cost: \$97

◆ Off-Campus Studies

MAKING SENSE OF THE SIXTIES

Mike Olszewski, Cleveland radio and television personality, Curator and Archivist for the Ohio Broadcast Archive and Museum

Tuesdays, September 5–26

10 a.m.–noon

No one is exactly sure when the "era of the Sixties" began. The Cold War? The Space Race? The Civil Rights Movement? The emergence of the youth culture? This course looks at how all of these events played a role in shaping America and the world during the most pivotal decade in recent history.

Landmark Centre—Beachwood

Lifelong Learning member cost: \$60

Nonmember cost: \$75

AMERICAN CREEDS

David Huston, History Teacher

Saturdays, September 16–October 21

No class: September 30

10:30 a.m.–noon

America has been called "the first new nation." It did not grow organically from time immemorial, it was deliberately created by groups of people who harbored deep and often conflicting ideas about what sort of nation they were actually founding. "American Creeds" will be a start toward examining some of the central foundational statements of value and aspiration that have helped shape this remarkable country. Starting with Puritan John Winthrop's "Model of Christian Charity" (The "City on a Hill" speech) and traversing the ideas of Roger Williams, Ben Franklin, Thomas Jefferson, James Madison, George Washington, J.Q. Adams, Alexis de Tocqueville, Andrew Jackson, Frederick Douglass, Elizabeth Cady Stanton, and Abraham Lincoln, we will search out the sometimes explicit and sometimes hidden agendas of these pivotal figures and the impact they have had on American life. There will be a sequel course later in the year that will examine the credos of 20th and 21st century America.

Laurel School—Lyman Campus

Member of Lifelong Learning cost: \$90

Nonmember cost: \$110

JEWS AND SPORTS: FROM THE NAZI OLYMPICS IN BERLIN TO THE HALL OF FAME

Dennis Hirsh, Lecturer in Lifelong Learning, CWRU

Tuesdays, September 12–October 3

6:30–8 p.m.

Jewish athletes and sports fans in the United States have long faced the question of where and how these aspects of their identity can meet (and where they might need to diverge). This course begins with a discussion about efforts of Jewish American organizations to boycott the Nazi Olympics in 1936. Then we move into the stories of famous Jewish athletes, sportscasters and sports owners—and the impact they have had on American popular culture and Jewish pride.

Landmark Centre—Beachwood

Member of Lifelong Learning cost: \$60

Nonmember cost: \$75



FLORA STONE MATHER CENTER FOR WOMEN

Providing resources and educational programming to enrich the academic, professional and personal lives of all women, promoting their success and well-being



SIGNATURE PROGRAMS

- ACT III Roundtable: A Drop-in Discussion Group
- Mather Spotlight Series and Women of Achievement Luncheon
- Mather Salon Series
- MOMS (Moms Offering Moms Support)
- Women's History Month
- Women of Color Series
- Women's Health and Well-being



To REGISTER or LEARN MORE, visit our website at: case.edu/centerforwomen/programs/

ELIZABETH I: PIRATE QUEEN AND SPYMASTER

Betty Zak, Leader-Teacher, Off-Campus Studies

Mondays, September 18–November 6
10–11:30 a.m.

The Vatican and others called her a Pirate Queen and a master of spies as she transformed England into an imposing empire. Discover her power and intrigue, her swashbuckling mariners who terrorized the seas and the brilliance of a spymaster who exploited double agents, deciphered codes and laid a foundation for international espionage. Books: Susan Ronald, *The Pirate Queen: Queen Elizabeth I, Her Pirate Adventurers, and the Dawn of Empire*; Stephen Budiansky, *Her Majesty's Spymaster*

Bay United Methodist Church

Member of Lifelong Learning cost: \$82
Nonmember cost: \$97

◆ Off-Campus Studies

ALEXANDER HAMILTON: FOUNDING FATHER

Jim Van Horn, Leader-Teacher, Off-Campus Studies

Tuesdays, September 19–November 7
1–2:30 p.m.

In Ron Chernow's book, Hamilton is described as an "Illegitimate, largely self-taught orphan from the Caribbean, aide-de-camp to Washington, battlefield hero, member of the Constitutional Convention, leading author of The Federalist Papers, head of the Federalist Party, first treasury secretary who created our tax and budget systems, Customs Service, Coast Guard, and central bank... (who) figures prominently in almost every major political episode of the late eighteenth century America." Chernow offers us the opportunity to explore and discuss the impact of this amazing individual on his times and the formation of this new nation. Book: R. Chernow, *Alexander Hamilton*

Starr House

Member of Lifelong Learning cost: \$82
Nonmember cost: \$97

◆ Off-Campus Studies



LITTLE KNOWN STORIES OF THE GREAT WAR

Stanford Sarlson, Leader-Teacher, Off-Campus Studies

Thursdays, September 21–November 9
10–11:30 a.m.

The First World War was the forerunner of all modern wars. Many inventions saw their first use in this war and, all but poison gas, became common usage forever more in all future wars. They all have interesting stories, which this course will explore. Additionally, the failed Gallipoli campaign, the forerunner of grand global strategies, will also be discussed. This war arguably never ended, but just slumbered, only to start up again in 1939. Books: Erik Larson, *Dead Wake*; Diana Preston, *A Higher Form of Killing*; excerpts from David Butler's *Lusitania* and Barbara Tuchman's *The Zimmerman Telegram*

Cleveland Skating Club

Member of Lifelong Learning cost: \$82
Nonmember cost: \$97

◆ Off-Campus Studies

WINSTON AND CLEMENTINE CHURCHILL

Pamela Belknap, Leader-Teacher, Off-Campus Studies

Thursdays, September 21–November 9
10–11:30 a.m.

Two new biographies present fresh, contemporary perspectives on hero Winston Churchill and his wife, Clementine, who was indispensable to his life and important to Great Britain. Discuss their unique personalities, fascinating marriage, and critical contributions to their nation. Compare and contrast with the lives of the Roosevelts. Books: Boris Johnson, *The Churchill Factor: How One Man Made History*; Sonia Purnell, *Clementine: The Life of Mrs. Winston Churchill*

Landmark Centre—Beachwood

Member of Lifelong Learning cost: \$82
Nonmember cost: \$97

◆ Off-Campus Studies

WINSTON AND CLEMENTINE CHURCHILL

Pamela Belknap, Leader-Teacher, Off-Campus Studies

Thursdays, September 21–November 9
1:30–3 p.m.

Two new biographies present fresh, contemporary perspectives on hero Winston Churchill and his wife, Clementine, who was indispensable to his life and important to Great Britain. Discuss their unique personalities, fascinating marriage, and critical contributions to their nation. Compare and contrast with the lives of the Roosevelts. Books: Boris Johnson, *The Churchill Factor: How One Man Made History*; Sonia Purnell, *Clementine: The Life of Mrs. Winston Churchill*

Laurel Lake Community Room

Member of Lifelong Learning cost: \$82
Nonmember cost: \$97

◆ Off-Campus Studies



CREATING THE PANAMA CANAL

Stanford Sarlson, Leader-Teacher, Off-Campus Studies

Fridays, September 22–November 10
10–11:30 a.m.

The building of the Panama Canal was one of the 20th century's biggest engineering projects and great triumphs. A dream of centuries, the failed attempt rocked France to its very foundations, created a new country, the Republic of Panama, and put the United States on a role of global involvement. The story of its building is more dramatic and far-reaching than most people can imagine. David McCullough's book is more absorbing than a novel and tells the whole story brilliantly. Book: D. McCullough, *The Path Between the Seas: The Creation of the Panama Canal, 1870-1914*

Judson Park

Member of Lifelong Learning cost: \$82
Nonmember cost: \$97

◆ Off-Campus Studies

COURSES

PRESIDENTIAL PAST TENSE

Jim Lane, Leader-Teacher, Off-Campus Studies

Fridays, September 22–November 10
10:30 a.m.–noon

What can we learn from the lives of former chief executives? What challenges did they face? How did they react to those challenges? What goals and programs did they attempt to establish? How did they succeed or fail? What were their personalities like and what shortcomings plagued them? What qualities of leadership did they possess or lack? Two authors explore how several former Chief Executives faced the tensions of a new Cold War world, numerous assassinations, Civil Rights strife and success, a new war in Asia, dissent at home, and the meltdown of their hopes and dreams. Books: Clint Hill, *Five Presidents: My Extraordinary Journey with Eisenhower, Kennedy, Johnson, Nixon, and Ford*; Chris Whipple, *The Gatekeepers: How the White House Chiefs of Staff Define Every Presidency*

St. Paul's Episcopal Church

Member of Lifelong Learning cost: \$82
Nonmember cost: \$97

◆ Off-Campus Studies



THE CRUSADES AND THEIR IMPACT ON JEWISH LIFE

Ezra Blaustein, Lecturer in Lifelong Learning, CWRU

Tuesdays, October 31–November 21
6:30–8:30 p.m.

To this day, the series of military expeditions begun in the late 11th century, known as the Crusades, are often celebrated in the Christian West and bitterly spoken of in Islamic culture. The Crusades represent a critical juncture in Jewish history as well. This course offers a Jewish perspective on this history, and its effects, focusing on the Crusades' impact on Jewish life in Christian Europe and in the Islamic Middle East.

Landmark Centre—Beachwood

Member of Lifelong Learning cost: \$60
Nonmember cost: \$75

JEWIS AND REVOLUTIONS

Brian Amkraut, Director, Siegal Lifelong Learning, CWRU

Tuesdays, October 24–November 14
7–9 p.m.

This course examines four revolutions with a focus on the roles played by Jews both individually and collectively in these historical episodes and the impact of these events on Jewish life. In addition to the better known American, French, and Russian Revolutions, we will also spend a session examining the less successful European revolutions of 1848.

Landmark Centre—Beachwood

Member of Lifelong Learning cost: \$60
Nonmember cost: \$75

Books of Aurora, Inc.



Personal attention to all your book needs

Selling books since 1978

rita@booksofaurora.com

www.booksofaurora.com

330.995.3228



HELP US BRING DIVERSE, QUALITY EDUCATION TO NORTHEAST OHIO

Support the Lifelong Learning Program's Annual Fund

Through your generous support, we can realize our mission of bringing diverse, quality educational opportunities to the Greater Cleveland area, providing community engagement and cultivating learning and personal growth.

With your annual gift, we can offer free or low-cost educational opportunities for the entire community, create innovative programming and attract world-class scholars and lecturers.

Give your gift today and take pride in supporting a cherished community resource.



THE LAURA & ALVIN SIEGAL
LIFELONG LEARNING
PROGRAM

For more information or to make a gift, call Brian Amkraut at 216.368.0423.

HOLOCAUST STUDIES

HIDDEN CHILDREN OF THE HOLOCAUST

Leatrice Rabinsky, Lecturer in Lifelong Learning, CWRU

Tuesdays, September 5–October 10
1–3 p.m.

Testaments, burdens and gifts of memory of the Holocaust bring pain and solace to those who have survived the traumatic years. Learn why Dasha Rittenberg explains, "I would rather have the pain of memory than to forget." Study the anguish and comforts told by many aging survivors.

Landmark Centre—Beachwood

Member of Lifelong Learning cost \$90
Nonmember cost: \$110

AMERICA AND THE HOLOCAUST: LOST OPPORTUNITIES

Sol Factor, Leader-Teacher, Off-Campus Studies

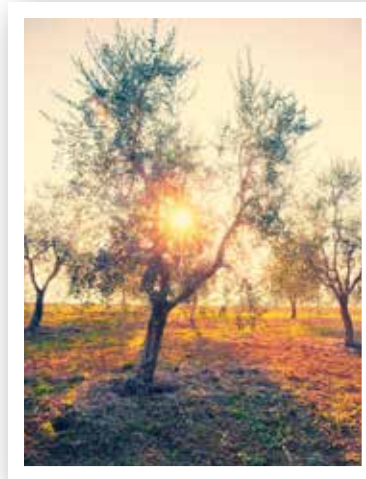
Wednesdays, September 20–November 8
10–11:30 a.m.

In the years 1933–1945, America failed to become the haven for those attempting to escape from Nazi persecution. The State Department, under Breckinridge Long, used numerous tactics to avoid granting visas to those most desperate. Antisemitism was prevalent both in the government and among the American people. The American press, in many cases, either hid news stories emanating from Germany on back pages or featured them only when it was impossible to hide the news. In 1944, the government finally established the War Refugee Board. Using Deborah Lipstadt's book, we will examine the actions and inactions of the government under FDR toward the plight of the Jews of Europe. Book: D. Lipstadt, *Beyond Belief: The American Press and the Coming of the Holocaust, 1933–1945*

Rosemont Country Club

Member of Lifelong Learning cost: \$82
Nonmember cost: \$97

◆ Off-Campus Studies



RIGHTEOUS AMONG THE NATIONS DURING THE HOLOCAUST

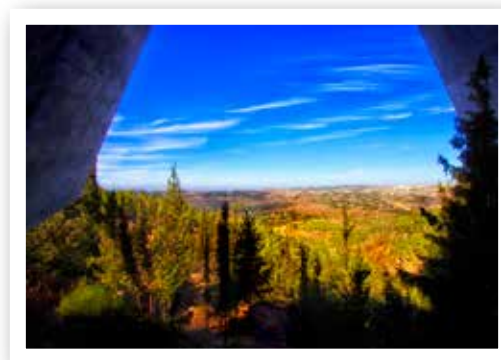
Leatrice Rabinsky, Lecturer in Lifelong Learning, CWRU

Tuesdays, October 17–November 21
1–3 p.m.

Noteworthy are nations, communities and personalities of non-Jews whose courage helped Jewish victims in their struggle for survival. Denmark's citizens refused to behave as innocent bystanders. Chambon-sur-Lignon in France, under Pastor Trocmé's family, hid hundreds of Jews in the face of deportation. Sweden's Raoul Wallenberg, Japan's Chiune Sugihara, Poland's Jan Karski, America's Varian Fry and Portugal's Aristides de Sousa Mendes are among those honored as the Righteous Among the Nations.

Landmark Centre—Beachwood

Member of Lifelong Learning cost: \$90
Nonmember cost: \$110



HORTICULTURE AND NATURE

THE EXTRAORDINARY GIFTS OF THE WADE FAMILY

Holly Witchey, Professor of Art History, CWRU

Wednesdays, September 6–October 4
10–11:30 a.m.

Learn how three generations of one family, the Wade family, helped to transform Cleveland's cultural infrastructures. Lectures will include the development of museums in America with a focus on the Cleveland Museum of Art, University Circle, the role of the Grand Tour in the creation of Cleveland's cultural infrastructure; and Jephtha Homer Wade II, Cleveland's "Ideal Philanthropist."

Squire Valleevue and Valley Ridge Farms

Member of Lifelong Learning cost: \$45
Nonmember cost: \$60

PAINTING IN THE OUTDOORS

Patricia Sigmier, Local Artist

Fridays, September 8–October 13
10 a.m.–2 p.m.

In this course we will explore painting with watercolor on location at Case Western Reserve University's Squire Valleevue Farm. This is an ideal venue for painting outdoors using direct observation of the natural light, shadows and ever-changing atmosphere. The changing season brings new colors of autumn to our palettes. The course includes demonstrations and group critiques as well as individual instruction. Each student will work at her/his own pace. Bring a bag lunch. Limited Enrollment

Squire Valleevue and Valley Ridge Farms

Member of Lifelong Learning cost: \$250
Nonmember cost: \$280



WALKING THROUGH NATURE

Jay Abercrombie, Field Biologist,
formerly with the Geauga Park District

Wednesdays, September 13–27
10 a.m.–noon

This field seminar provides a close look at the plants, wildlife, and geology of Squire Valleevue Farm. On field trips into the forest and meadows observe and discuss habitats and their inhabitants as they transition to fall and prepare for winter. No strenuous hiking will be involved, but participants should be able to maintain an active pace over generally moderate but occasionally hilly or wet terrain.

Squire Valleevue and Valley Ridge Farms

Member of Lifelong Learning cost: \$45
Nonmember cost: \$55



FORAGING AT THE FARM

Ryan Bennett, Farm Food Program Coordinator, CWRU

Saturdays, September 9–23
10 a.m.–1 p.m.

Learn how to safely identify, sustainably harvest and prepare wild flora and fungi found in the forests of the University Farms. The class involves hiking through the woods. Boots or hiking shoes, long pants, water bottles, bug spray and sunscreen highly recommended.

Squire Valleevue and Valley Ridge Farms

Member of Lifelong Learning cost: \$50
Nonmember cost: \$65

COURSES

Jewish Studies

REMEMBERING AND FORGETTING: JEWISH PERSPECTIVES ON MEMORY

Allanna Cooper, Director of Jewish Lifelong Learning, CWRU

Wednesdays, September 6–27
10–11:30 a.m.

This course explores the avenues through which Jews remember the past. In the first session, we unpack the difference between “personal memory” and “collective memory,” and the ways these intersect. The next three sessions focus on various channels that are used to trigger and access memory. These include: place, objects, and ritual. We draw on essays written by those haunted by memory-loss, those seeking to recover their past, as well as those who are considered “memory champions.”

Landmark Centre—Beachwood

Member of Lifelong Learning cost: \$60
Nonmember cost: \$75

THE JEWISH CALENDAR: MARKING THE HOLIDAYS AND MEASURING TIME



Allanna Cooper, Director of Jewish Lifelong Learning, CWRU

Session I: Tuesdays, September 12–October 3
Session II: Tuesdays, October 10–31
6–7:30 p.m.

Each session covers new material. Register for one or both.

This course provides a concise but comprehensive look at the structure of the Jewish calendar, and the traditions used to mark time. It offers an overview of all the major Jewish holidays, their meanings, how they developed and the variety of ways they are celebrated today.

Landmark Centre—Beachwood

Member of Lifelong Learning cost per session: \$60
Nonmember cost per session: \$75



TORAH STUDY: ENDURING LESSONS OF GENESIS

Dahna Baskin, Lecturer in Lifelong Learning, CWRU

Thursdays, October 19–November 30
No class: November 23
10 a.m.–noon

Drawing on teachings that have been transmitted over generations, students will study the meanings and lessons of the text. For beginners, this course gives access to the first book of the Torah, offering insight into how it has been traditionally studied and understood. For those with experience, the course offers close readings with new insights.

Landmark Centre—Beachwood

Member of Lifelong Learning cost: \$90
Nonmember cost: \$110

JEWISH MYSTICISM: AN INTRODUCTION

Matt Goldish, Samuel M. and Esther Melton
Chair of History, The Ohio State University

Mondays, October 23–November 13
6:30–8:30 p.m.

This course will present a rapid overview of some of the main currents of Jewish mysticism and Kabbalah. It will begin with material from the Talmud, move to the Zohar, and end in modern times. We will encounter stories and other lively literary sources to gain a sense of the major trends and personalities involved. No background necessary.

Landmark Centre—Beachwood

Member of Lifelong Learning cost: \$60
Nonmember cost: \$75



IT'S NEVER TOO LATE TO LEARN!

COURSE AUDIT PROGRAM FOR SENIOR CITIZENS

*Did you ever wish you had
taken that philosophy class
in college?*

*What about your desire
to study literature and
creative writing?*

The Course Audit Program for Senior Citizens (CAPSC) offers students, ages 65 and older, the opportunity to take courses on the Case Western Reserve campus at a reduced tuition rate (\$40 per credit hour). Subject areas include: English, literature, foreign languages, music, art, performing arts, history, political science, religion, philosophy, astronomy and many more!



LEARN MORE about the CAPSC program or to REGISTER contact Felicia Westbrook at felicia.westbrooks@case.edu or call **216.368.2090**.

COURSES

Language: Hebrew

CLASSICAL HEBREW

Allows learners of all levels to read the Bible in its original language. Students acquire basic knowledge of Hebrew, learn decoding, vocabulary and grammar necessary for understanding biblical narrative and Bible-based liturgy.

ADVANCED BEGINNER CLASSICAL

Dahna Baskin, Hebrew Language Instructor

Mondays, September 11–November 27
6:30–8:30 p.m.

Landmark Centre—Beachwood

Member of Lifelong Learning cost: \$180
Nonmember cost: \$200

CONVERSATIONAL HEBREW

Courses allow students to reach the goal of communicating in Israel's native language, as well as enjoy Hebrew literature, songs, drama, films, newspapers and Israeli television.

BEGINNER CONVERSATIONAL

Leah Cooper, Hebrew Language Instructor

Wednesdays, September 6–December 20
No classes: September 20; October 4, 11; November 22
6:30–8:30 p.m.

Landmark Centre—Beachwood

Member of Lifelong Learning cost: \$180
Nonmember cost: \$200

INTERMEDIATE CONVERSATIONAL

Leah Cooper, Hebrew Language Instructor

Tuesdays, September 5–November 21
6:30–8:30 p.m.

Landmark Centre—Beachwood

Member of Lifelong Learning cost: \$180
Nonmember cost: \$200

INTERMEDIATE CONVERSATIONAL

Instructor: TBD, Hebrew Language Instructor

Wednesdays, September 6–December 20
No classes: September 20; October 4, 11; November 22
1–3 p.m.

Landmark Centre—Beachwood

Member of Lifelong Learning cost: \$180
Nonmember cost: \$200

INTERMEDIATE CONVERSATIONAL

Judith Shamir, Hebrew Language Instructor

Wednesdays, September 6–December 20
No classes: September 20; October 4, 11; November 22
6:30–8:30 p.m.

Landmark Centre—Beachwood

Member of Lifelong Learning cost: \$180
Nonmember cost: \$200

INTERMEDIATE CONVERSATIONAL

Leah Cooper, Hebrew Language Instructor

Mondays, September 11–November 27
6:30–8:30 p.m.

Landmark Centre—Beachwood

Member of Lifelong Learning cost: \$180
Nonmember cost: \$200

INTERMEDIATE CONVERSATIONAL

Rivka Taub, Hebrew Language Instructor

Mondays, September 11–November 27
6:30–8:30 p.m.

Landmark Centre—Beachwood

Member of Lifelong Learning cost: \$180
Nonmember cost: \$200



ADVANCED CONVERSATIONAL

Rivka Taub, Hebrew Language Instructor

Tuesdays, September 5–November 21
10 a.m.–noon

Landmark Centre—Beachwood

Member of Lifelong Learning cost: \$180
Nonmember cost: \$200

ADVANCED CONVERSATIONAL

Judith Shamir, Hebrew Language Instructor

Thursdays, September 7–December 21
No classes: September 21; October 5, 12; November 23
10 a.m.–noon

Landmark Centre—Beachwood

Member of Lifelong Learning cost: \$180
Nonmember cost: \$200

HEBREW LITERATURE

Hebrew literature engages advanced students in fictional novels and plays by leading Israeli authors and playwrights.

ADVANCED LITERATURE

Judith Shamir, Hebrew Language Instructor

Tuesdays, September 5–November 21
10 a.m.–noon

Landmark Centre—Beachwood

Member of Lifelong Learning cost: \$180
Nonmember cost: \$200



When you came to an evening lecture,
we knew you were **INTRIGUED**.

When you attended an event at the museum,
we knew you were **INTERESTED**.

When you signed up for a six-week course,
we knew you were **COMMITTED**.

Now, it's time to
SHOW your support
for lifelong learning.



THE LAURA & ALVIN SIEGAL
LIFELONG LEARNING
PROGRAM

Whether it's supporting a lifelong learning program, class, lecture or specific naming opportunities, your gift enables us to continue to offer high quality accessible adult education.

For more information, call Brian Amkraut at 216.368.0423.

COURSES

Literature

Literature

1984, THE FACTS IN THE FICTION

Barbara Parr, Lecturer in Lifelong Learning, CWRU

Wednesdays, September 6–27
7–8:30 p.m.

"If the Party could thrust its hand into the past and say of this or that event, IT NEVER HAPPENED—that, surely, was more terrifying than mere torture and death?" George Orwell, *1984*. This quote shows how relevant a book written in 1949, about a futuristic and autocratic society in 1984, can be to us in 2017. Orwell's prophetic voice rings true today. This is what led *1984* to rocket onto best-seller lists this year, more than 65 years after its publication date. Let's see if you can tell the similarities and differences between the novel and our society.

Lakewood Public Library, Main

Member and Nonmember cost: free

Co-sponsored by the Lakewood Public Library

HOMER'S ILIAD

Janice Vitullo, Classics Teacher

Saturdays, September 9–October 28
No Class: September 30
10:30 a.m.–noon

This course offers a guided reading of Homer's great epic poem *The Iliad*. Participants will have the opportunity to engage in analysis and discussion of various aspects of the poem, including style, historical context, and the poem's significance within the literary canon.

Required Text: Homer: *The Iliad*, translated by Robert Fagles. ISBN# 0140275363. NB: Fagles' book will be heavily referenced in class. Students will benefit from having this particular translation and are urged not to purchase a different one.

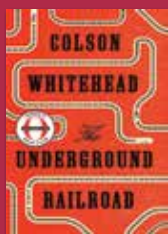
Laurel School–Lyman Campus

Member of Lifelong Learning cost: \$90
Nonmember cost: \$110

FOURTEENTH
2017



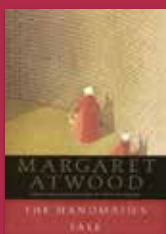
SEASON
2018



COLSON WHITEHEAD
SEPTEMBER 6, 2017



PATTI SMITH
IN CONVERSATION WITH MAUREEN CORRIGAN
OCTOBER 17, 2017



MARGARET ATWOOD
NOVEMBER 16, 2017



MARIA SEMPLE
MARCH 20, 2018



DAVID GRANN
APRIL 17, 2018



JOHN IRVING
MAY 8, 2018

Purchase your ticket online at writerscenterstage.org or by calling 216.368.6062.



Cuyahoga County
Public Library
Foundation



CASE WESTERN RESERVE
UNIVERSITY EST. 1826
think beyond the possible™

ALFRED HITCHCOCK: THE STORIES BEHIND THE SUSPENSE

Terry Meehan, Leader-Teacher, Off-Campus Studies

Mondays, September 18–November 6
1–2:30 p.m.

We will examine three of Alfred Hitchcock's films and their literary sources. The written work will be discussed first, followed by a screening and discussion of the film adaptation. Books: J. Buchan, *The Thirty-Nine Steps*; P. Highsmith, *Strangers on a Train*; and C. Woolrich, *Rear Window*

Gates Mills Community House

Member of Lifelong Learning cost: \$82
Nonmember cost: \$97

◆ Off-Campus Studies

CONTEMPORARY FEMININE VOICES

Joseph Jacoby, Leader-Teacher, Off-Campus Studies

Mondays, September 18–November 6
1–2:30 p.m.

This course samples several outstanding books written by women in recent years. We begin with Elizabeth Strout's Pulitzer Prize-winning *Olive Kitteridge*, a study of a formidable but flawed New England woman. We continue with the remarkably original voice of Penelope Fitzgerald's masterpiece, *The Gates of Angels*, set in 1913 Cambridge, England. We conclude with Ann Patchett's *Commonwealth*, a fascinating work based on her own family. Books: Elizabeth Strout, *Olive Kitteridge*; Penelope Fitzgerald, *The Gates of Angels*; Ann Patchett, *Commonwealth*

Rocky River Public Library

Member of Lifelong Learning cost: \$82
Nonmember cost: \$97

◆ Off-Campus Studies

READING THE WESTERN CLASSICS TO FIND MEANING IN A SECULAR AGE

Charlene Mileti, Leader-Teacher, Off-Campus Studies

Tuesdays, September 19–November 7
7:30–9 p.m.

In an earlier age, *Dante's Divine Comedy* provided mankind with a transcendent sense of the universe. In modern times, Melville's *Moby Dick* wrested that profound sense of the universe. Because life has become about the persistent acquisition of wealth, power and entertainment, the authors argue we have clearly lost our way to our own humanity. Book: Hubert Dreyfus and Sean Dorrance Kelly, *All Things Shining: Reading the Western Classics to Find Meaning in a Secular Age*

First Unitarian Church

Member of Lifelong Learning cost: \$82
Nonmember cost: \$97

◆ Off-Campus Studies

**ANNE TYLER: TELLER OF TALES**

Phyllis Asnien, Leader-Teacher, Off-Campus Studies

Thursdays, September 21–November 9
10–11:30 a.m.

Pulitzer Prize winner Anne Tyler has written "I am addicted to the sensation of living lives I would not experience in reality." The author's *Dinner at the Homesick Restaurant* is a funny, wise tale of a family who keeps trying to get it "right." Tyler's 20th novel, *A Spool of Blue Thread*, is an example of her quirky, crackling wit. Books: Anne Tyler, *Breathing Lessons*, *Dinner at the Homesick Restaurant*, and *A Spool of Blue Thread*

Westlake United Methodist Church

Member of Lifelong Learning cost: \$82
Nonmember cost: \$97

◆ Off-Campus Studies

CONTEMPORARY FEMININE VOICES

Joseph Jacoby, Leader-Teacher, Off-Campus Studies

Thursdays, September 21–November 9
10:30 a.m.–noon

This course samples several of the outstanding books written by women in recent years. We begin with Elizabeth Strout's Pulitzer Prize-winning *Olive Kitteridge*, a study of a formidable but flawed New England woman. We continue with the remarkably original voice of Penelope Fitzgerald's masterpiece, *The Gates of Angels*, set in 1913 Cambridge, England. We conclude with Ann Patchett's *Commonwealth*, a fascinating work based on her own family. Books: Elizabeth Strout, *Olive Kitteridge*; Penelope Fitzgerald, *The Gates of Angels*; Ann Patchett, *Commonwealth*

Breckenridge Village

Member of Lifelong Learning cost: \$82
Nonmember cost: \$97

◆ Off-Campus Studies

COURSES

THE MOONSTONE: A MASTERPIECE MYSTERY

Cheryl Wires, Leader-Teacher, Off-Campus Studies

Thursdays, September 21–November 9
10–11:30 a.m.

T.S. Eliot praised *The Moonstone* by Wilkie Collins as “the first and the best of modern English detective novels.” Literary critics concur, crediting Collins, along with Edgar Allan Poe, with creating the detective genre. The moonstone, a sacred diamond stolen from an Indian shrine and bequeathed to a beautiful young woman, mysteriously disappears from her English country house. Collins, writing in 1868, developed a number of elements, which have become popular conventions in contemporary detective fiction. Books: Wilkie Collins, *The Moonstone*; Andre Lycett, *Wilkie Collins: A Life of Sensation*, selected chapters

Middleburg Heights Church

Member of Lifelong Learning cost: \$82
Nonmember cost: \$97

◆ Off-Campus Studies

NEWS OF THE WORLD

Sylvia Abrams, Lecturer in Lifelong Learning, CWRU

Mondays, October 2–23
1:30–3 p.m.

Join us for a four-week series on Paulette Jile’s novel *News of the World*. Set in the 1870s, *News of the World* centers on the long journey of two unlikely characters, retired Captain Kidd and former Indian child captive Johanna. Nominated for a National Book Award, the book has everything a western novel ought to: strong plot, evocative setting, difficult moral choices, and unforgettable characters.

Cuyahoga County Public Library, Orange Branch

Member and Nonmember cost: free

Co-sponsored by the Cuyahoga County Public Library



WORKS OF MARGARET ATWOOD

Jackie Czarnota, Lecturer in Lifelong Learning, CWRU

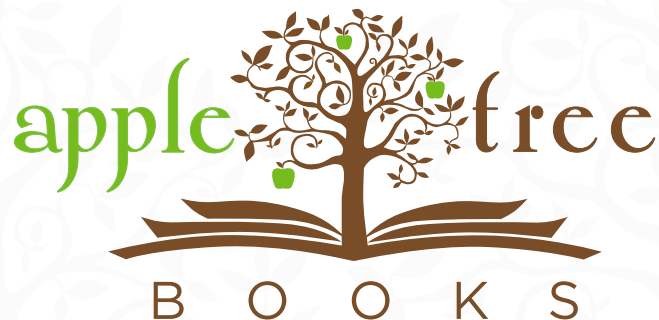
Thursdays, October 19–November 9
7–8:30 p.m.

Join us for an in-depth look into the works of Margaret Atwood, poet, novelist, literary critic, essayist, and environmental activist. Several of her books will be discussed, including *The Handmaid’s Tale*, a poignant look at a world that exists under a strict monopoly of the ruling class, where women are assigned to roles in order to regulate the society’s population. Participants are asked to read Parts I-III (pages 1-40) for the first class. The instructor will provide additional readings.

Cuyahoga County Public Library, Independence Branch

Member and Nonmember cost: free

Co-sponsored by the Cuyahoga County Public Library



12419 CEDAR AT FAIRMOUNT • CLEVELAND HTS., OH 44106

INFO@APPLETREE-BOOKS.COM • PHONE: 216.791.2665 • WEB: WWW.APPLETREE-BOOKS.COM

STORE HOURS: Tuesday - Thursday: 10 - 6 • Friday: 10 - 8 • Saturday: 10 - 6 • Closed Sunday - Monday

ASSOCIATION FOR CONTINUING EDUCATION (ACE)

is a volunteer organization dedicated to providing and supporting continuing education programs in cooperation with the Siegal Lifelong Learning Program at Case Western Reserve University.

ACE GOODTIME III ADVENTURE

Friday, September 22 | 10:45 a.m.–2 p.m.

Meet at the Goodtime III ticket office
825 E. 9th St., Cleveland, OH 44114

See page 35 for more details.

ACE LECTURE DAY: THE TANGLED TALE OF TURKEY

Monday, October 9 | 9:15 a.m.–2 p.m.

Mayfield Sand Ridge Club
1545 Sheridan Rd., South Euclid, OH 44121

See page 36 for more details.



ASSOCIATION
for CONTINUING
EDUCATION

AT CASE WESTERN RESERVE UNIVERSITY



THE LAURA & ALVIN SIEGAL
LIFELONG LEARNING
PROGRAM

ACE membership is open to anyone with an inquisitive mind!
Current ACE membership fees can be found at acesite.org. **JOIN TODAY!**

Educational Travel Program

CWRU World Travelers: Join Us

TANZANIA: SAFARI DURING THE GREAT MIGRATION

March 5–16, 2018

Behold the timeless phenomenon of the extraordinary Great Migration by land and air—the best and most comprehensive way to experience one of the Earth’s most incredible natural spectacles. Here, cycles of rain and renewal dictate the foraging patterns of over one million wildebeest, 500,000 zebra, and vast herds of Thomson’s gazelle and Cape buffalo that gather and migrate in pursuit of food and water while preyed upon by magnificent carnivores—lion, cheetah, and leopard.

Tour Leader: Patricia Princehouse, Director, Program in Evolutionary Biology; Outreach Director, Institute for the Science of Origins at Case Western Reserve University



GREECE: BEACHES AND RUINS

May 23–June 5, 2018

Discover the ancient civilization of Greece’s past with experts in history and philosophy. Visit iconic monuments, sites, cities, and bask in the endless beauty of the architecture, art, and culture while discussing philosophical beginnings of modern thought and ethics.

Tour Leaders: Rachel Sternberg, Associate Professor and Director of Graduate Certificate Program at Case Western Reserve University and Kevin Houser, Beamer-Schneider SAGES Teaching Fellow in Ethics at Case Western Reserve University



THE WORLD IS YOUR CLASSROOM

- Visit international destinations with faculty experts sharing their in-depth knowledge and love of learning
- Gain access to behind-the-scenes sites, cultural treasures and educational activities
- Travel with small groups of Case Western Reserve alumni and friends
- Start your journey from any place in the world



JEWISH POLAND: LOSS, REMEMBRANCE, AND REVIVAL

June 25–July 4, 2018

Explore Jewish Poland's 1,000 year history, its tragic loss and surprising cultural revival. A fully custom tour designed to immerse travelers in complex history and to celebrate the resurgence of Jewish life today. Through expert guides, travelers will experience Poland in new ways.

Tour Leader: Alanna Cooper, Director, Jewish Lifelong Learning at The Laura and Alvin Siegal Lifelong Learning Program of Case Western Reserve University



For a COMPLETE LISTING or to REGISTER visit case.edu/lifelonglearning/travel or call Michelle Miller at 216.368.8745.

Politics and Contemporary Issues

THE ROBERTS COURT

Faculty, School of Law, CWRU

Wednesdays, September 6–October 4
1:30–3:30 p.m.

The Supreme Court had only eight justices for much of its 2016–17 term, but it nonetheless decided a number of important cases. Law school faculty will present lectures on cases recently brought before the U.S. Supreme Court on a wide range of issues, including predatory lending and subprime loans, the Individuals with Disabilities Education Act (IDEA), racial bias on juries and state funding for religious schools.

Landmark Centre—Beachwood

Member of Lifelong Learning cost: \$115
Nonmember cost: \$135

✕ Senior Scholars Wednesdays

U.S. AND LATIN AMERICAN RELATIONS: FROM THE COLD WAR TO THE TRUMP ADMINISTRATION

Jose Sola, Associate Professor of History,
Cleveland State University

Thursdays, September 7–October 12
1:30–3:30 p.m.

This course will examine the major events and policies that shaped the relationships between the United States and the Latin American nations. In the process, we will examine how the Cold War shaped U.S. views toward the region, how economic policies and political conflicts had an impact on migration and immigration patterns, and how U.S. history tends to ignore Latin American perspectives toward the U.S.

Landmark Centre—Beachwood

Member of Lifelong Learning cost: \$115
Nonmember cost: \$135

✕ Senior Scholars Thursdays



LIVING THE LAW

Barbara Greenberg, Attorney and Magistrate

Mondays, September 18–November 6
10:30 a.m.–noon

Using the *United States Constitution* and the *Bill of Rights* as our text, each class focuses on these treasured words and related landmark United States Supreme Court cases to illustrate how the decisions affect our daily lives. As our laws are fluid, current events and cases bring additional connection to these historic documents and their words.

Material: *United States Constitution, Bill of Rights*

South Franklin Circle

Member cost: \$82
Nonmember cost: \$97

◆ Off-Campus Studies

SHINING A LIGHT ON THE POOR WHITE UNDERCLASS

Barbara Parr, Leader-Teacher, Off-Campus Studies

Tuesdays, September 19–November 7
10–11:30 a.m.

A spotlight on the white underclass recently has produced several new books on the topic. We will read and discuss the memoir of young JD Vance, which has hit the *New York Times* best-seller list. Moving back in time, we will discuss the mid-20th century experiences of Jeannette Walls. Both Vance and Walls were born and raised in the depths of profound poverty and family dysfunction. Both explore the causes and consequences of being part of the American underclass. Finally, we will revisit the iconic novel, *Huckleberry Finn*, a troubling and important book, which is written in the vocabulary and syntax of the uneducated son of the town drunk. Each of these books will allow us to examine a part of our American society that has, until recently, been largely ignored. Books: JD Vance, *Hillbilly Elegy*; Jeannette Walls, *Glass Castles*; Mark Twain, *Huckleberry Finn*

Brecksville United Church of Christ

Member of Lifelong Learning cost: \$82
Nonmember cost: \$97

◆ Off-Campus Studies

THE FIFTH AMENDMENT: WHO GETS IT AND WHEN?

Barbara Greenberg, Attorney and Magistrate

Tuesdays, September 19–October 10
7–8:30 p.m.

The words of the Fifth Amendment are very familiar from television crime shows and public trials and hearings. “I plead the Fifth” is the constitutional protection from being compelled to be a witness against him/herself in a criminal case. But this amendment is so much more; the need for the grand jury review of evidence, the double jeopardy clause, a due process clause, implied equal protection, plus it requires “just compensation” when private property is taken for public use. Together we will review and discuss this amendment and the landmark U.S. Supreme Court cases using this amendment over four weeks.

Lakewood Public Library, Main

Member and Nonmember cost: free

Co-sponsored by the Lakewood Public Library

THE RIGHT TO PRIVACY

Barbara Greenberg, Attorney and Magistrate

Tuesdays, September 19–November 7
2–3:30 p.m.

There is a continuing conflict between individual rights and those of the community for public safety, security and health and welfare. As well, issues of personal choice are in conflict with the First Amendment issues of free speech and religion. The United States Supreme Court has spoken on some issues and others are to be decided. We will look at the areas of most recent concern: technology, public health, and personal and family issues. Our discussions will include a review of decisions from the United States Supreme Court involving these areas and the *Bill of Rights* which gives us the basis for our right to privacy. Material: U.S. *Bill of Rights*

Judson Manor

Member of Lifelong Learning cost: \$82

Nonmember cost: \$97

◆ Off-Campus Studies



TURKEY: UNDERSTANDING THE PRESENT BY SEEING THE PAST

John Grabowski, Associate Professor of Applied History, CWRU

Thursdays, October 19–November 16
1:30–3:30 p.m.

For many years, news about Turkey was rarely found on the front pages of the daily news—whether in hard copy or on the web. Recently, and particularly after the failed coup of July 15, 2016, events in Turkey have achieved a new prominence. Still, for many, Turkey remains a mystery. This course will look at the history of Turkey, beginning with prehistoric settlement and moving on to the rise and fall of the Ottoman Empire. It will conclude with a close look at the history of the current Turkish Republic, created in 1923, with a special focus on economics, education, and religion and a detailed examination of the events that brought that nation back to the front page.

Landmark Centre—Beachwood

Member of Lifelong Learning cost: \$115

Nonmember cost: \$135

✕ Senior Scholars Thursdays



Religion, Philosophy and Science

ORIGINS SCIENCE SERIES

Glenn Starkman, Professor of Physics, CWRU

Patricia Princehouse, Director, Evolutionary Biology Program, Case Western Reserve University

Tuesdays, September 5–October 10
1:30–3:30 p.m.

This course will introduce senior scholars to six of the biggest questions in the origins sciences. Topics range from the first moments of the universe to the only very recently evolved human mind. Each session will focus on one of these issues and will include both lecture and discussion. Optional readings will be suggested.

Landmark Centre—Beachwood

Member of Lifelong Learning cost: \$115
Nonmember cost: \$135

✕ Senior Scholars Tuesdays

RHYTHMS OF TIME: JEWISH PERSPECTIVES ON TEMPORAL CYCLES

Alanna Cooper, Director of Jewish Lifelong Learning, CWRU

Session I: Tuesdays, September 12–October 3

Session II: Tuesdays, October 10–31

6–7:30 p.m.

Each session covers new material. Register for one or both.

We structure our social lives around rhythms of time that are so taken for granted that they often go unnoticed. Drawing on Eviatar Zerubavel's work, *Hidden Rhythms: Schedules and Calendars in Social Life*, this course examines Jewish perspectives on time. How is time measured and marked? How do demarcations in time organize our spiritual and social lives? The Jewish calendar and its relationship to lunar and solar cycles, and to history are explored.

Landmark Centre—Beachwood

Member of Lifelong Learning cost per session: \$60
Nonmember cost per session: \$75



IN SEARCH OF THE SACRED IN INDIA

Joe Konen, Leader-Teacher, Off-Campus Studies

Tuesdays, September 19–November 7
10–11:30 a.m.

This course provides an opportunity for participants to sample the rich and varied religious traditions and expressions across the geography and history of India by reading William Dalrymple. Dalrymple's essays take us to hidden corners of the vast Indian landscape to meet "modest souls seldom mentioned in the headlines" but whose lives embody some of the many threads that make up the tapestry of India's religions. Book: William Dalrymple, *Nine Lives: In Search of the Sacred in Modern India*

Lakewood United Methodist Church

Member of Lifelong Learning cost: \$82
Nonmember cost: \$97

◆ Off-Campus Studies

THE REFORMATION

Peter Haas, Emeritus Professor of Jewish Studies, CWRU

Tuesdays, October 17–November 14
1:30–3:30 p.m.

It was 500 years ago that Martin Luther posted his 95 theses on the door of the Wittenberg Cathedral. Today, people are saying there needs to be a "Muslim Reformation." This is, then, a good time to look back at the series of events we call the Protestant Reformation to see how, why, and in which ways the religious landscape of the West was radically changed. The course will look at the background of the Reformation and at four of its most influential streams: Lutheranism, Calvinism, the English Reformation and the radical reformations. We will also look at the Roman Catholic Counter-Reformation.

Landmark Centre—Beachwood

Member of Lifelong Learning cost: \$115
Nonmember cost: \$135

✕ Senior Scholars Tuesdays

WRITING

WRITING CREATIVE NONFICTION

Linda Tuthill, Instructor in Lifelong Learning, CWRU

Session I: Tuesdays, October 3–November 14

Session II: Wednesdays, October 4–November 15
1–3 p.m.

Creative nonfiction opens its arms to an amazing variety of topics and techniques, from essays related to ideas to memoir birthed by the play of imagination on memory. Writers share work in class, giving and receiving helpful feedback.

Landmark Centre—Beachwood

Member of Lifelong Learning cost per session: \$90
Nonmember cost per session: \$110

POETRY WORKSHOP

Linda Tuthill, Instructor in Lifelong Learning, CWRU

Thursdays, October 5–November 16
1–3 p.m.

Galway Kinnell believes writing a poem is like making an artifact. It is making something physical out of words. In this class, poets share their creations with others and receive constructive feedback. Bring 20 copies of a poem you have written to the first class.

St. Paul's Episcopal Church

Member of Lifelong Learning cost: \$90
Nonmember cost: \$110



Writing

Wish you were here!

Homecoming Weekend is October 5-8, 2017

Visit
case.edu/homecoming
for schedule and
registration details.



LECTURE SERIES

EASTSIDE CONVERSATIONS

Loosely fashioned after the popular City Club Forum, these sessions provide the community with a unique luncheon program once a month in which contemporary issues are discussed. Led by local university faculty and laypeople, this forum provides participants the opportunity to engage in meaningful questions and conversations. For more information on Eastside Conversations, contact Helga Miller, program coordinator, at 216.368.1284.

Fridays, September 15, October 20,
November 17, December 15
noon–1:30 p.m.

Landmark Centre—Beachwood

SERIES OF FOUR COST

Member of Lifelong Learning cost: \$74

Nonmember cost: \$94

PER SESSION COST

Member of Lifelong Learning cost: \$20

Nonmember cost: \$25

fees include lunch

OUR THREE-BRANCH GOVERNMENT: DOES IT STILL WORK?

Barbara Greenberg, Attorney and Magistrate

Friday, September 15

Is compromise a dirty word for our two-branch legislative leg? Are our political parties more concerned with party over our country's best interest? Is the judicial branch still independent? We will look to the words of the Constitution to explain the three branches and determine if they are still working.



THE EUROPEAN UNION: PAST, PROBLEMS, PROSPECTS

Kenneth Ledford, Chair of the Department of History, CWRU

Friday, October 20

After 65 successful years, the European Union faces multiple challenges, the common currency (the euro) continues to be threatened, and newer members increasingly deviate from the fundamental membership requirements of adhering to principles of democracy and the rule of law. At the same time, member states continue to stress the Union's benefits, and most young Europeans prove resistant to the siren call of nationalist populism. How can Americans grasp this unique political structure, even as our own key democratic traditions seem under attack?

THE CHANGING JEWISH LANDSCAPE: REFLECTIONS ON A CAREER IN THE RABBINATE

Richard A. Block, Rabbi, The Temple-Tifereth Israel

Friday, November 17

Join Rabbi Block as he reflects on how the Jewish landscape has changed throughout his tenure as Head Rabbi of The Temple-Tifereth Israel.



LEARNING ACROSS THE AGES: WISING UP ABOUT BRAIN HEALTH

Peter J. Whitehouse, Professor of Neurology, CWRU

Friday, December 15

Involving learners of all ages can enhance lifelong education. Through topics like positive aging, brain health and intergenerational learning, we will identify how we create purposeful programs to support experiential learning and collective wisdom.



BAROQUE ORCHESTRA
jeannette sorrell

THE 2017-2018 SEASON
*Catch Apollo's Fire in Cleveland
and Around the Country!*

*"Superlative music-making... combining European stylishness
and American can-do entrepreneurialism."*

THE DAILY TELEGRAPH, London

LECTURE SERIES

ORIGINS SCIENCE SCHOLARS FALL 2017 (FULL SERIES)

The Origins Science Scholars Program is presented by the Siegal Lifelong Learning Program and the Institute for the Science of Origins (ISO), a partnership of Case Western Reserve University, the Cleveland Museum of Natural History and ideastream.

During this unique program, community members engage with one another and with leading scholars of the origins sciences to investigate rapidly developing areas of origins science. Each evening begins with a presentation by a world-class researcher, followed by complimentary dinner and open discussion among all the participants.

Tuesdays, October 24–December 5
5:30–8 p.m.

Program Schedule

5:30–6 p.m. –Coffee and Sign-In
6–7 p.m. –Lectures
7–7:30 p.m. –Dinner with faculty and fellows
7:30–8 p.m. –Q&A and dessert

Member of Lifelong Learning cost: \$40 single/\$175 full series
Nonmember: \$48 single/\$195 full series
parking is included

WHAT'S LEFT TO LEARN FROM PARTICLE ACCELERATORS?

Glenn Starkman, Professor of Physics, CWRU

Tuesday, October 24

For almost 100 years, we have built ever larger particle accelerators to probe shorter and shorter distances, with ever higher energy probes. With the discovery of the Higgs boson at the Large Hadron Collider, we have completed the Standard Model of particle physics. What's left to learn, and can we learn it from even bigger accelerators?

Cleveland Museum of Natural History

PARTICLES DETECTORS: MODERN CATHEDRALS

Cyrus Taylor, Dean and Professor in Physics, CWRU

Tuesday, October 31

The detectors at modern particle accelerators are awe-inspiring masterpieces of engineering weighing thousands of tons and requiring the coordinated effort of thousands of scientists and engineers at hundreds of universities and laboratories around the world. How do they work and how are they designed, built and operated?

Tinkham Veale University Center, CWRU

PARTICLE ACCELERATORS: THE WORLD'S LARGEST MACHINES

Mike Martens, Professor of Physics, CWRU

Tuesday, November 7

Particle accelerators began almost a century ago as table-top apparatus, and are now the world's largest machines, tens of miles long, crossing international borders, requiring whole power plants to operate.

Cleveland Museum of Natural History



CLIMATE CHANGE: PAST AND PRESENT

Darin Croft, Associate Professor, Department of Anatomy, CWRU School of Medicine

Tuesday, November 14

Are humans causing global climate change? Or is nature cycling the planet toward a heat wave, just as it has had periods of heat and ice ages in the recent and distant past? The geologic record and earth dynamics explain the difference between the glacially slow climate change of the past vs today's radically accelerated changes. In fact, the mechanics of it are pretty simple. Geologists understand very well what makes the earth hot and cold—today, and throughout the 4.5 billion-year history of the planet. And they know the effects climate change has had on the planet's inhabitants; the most common response of species to major environmental change is extinction. Participants will come away with a better understanding of the science involved, quite apart from the thorny questions of policy. However, the good news is that newly-emerging markets are making huge gains in clean energy, which not only curbs pollution but simultaneously helps counter climate change. Solar panels and wind turbines are already providing thousands of new jobs in Ohio.

Tinkham Veale University Center, CWRU

THE MIND-BODY CONNECTION: IS THE EVOLUTION OF PERCEPTION COMPUTATIONAL?

Michael Lewicki, Associate Professor of Electrical Engineering, CWRU; and Ken Loparo, Professor of Engineering and Chairman, CWRU

Tuesday, November 21

The brain's interpretation of sensory information results in representation and understanding of the environment. Perception isn't passive, it's shaped by learning, memory, expectation, and attention. Its evolution is the subject of considerable controversy. Can theories of optimality explain the codes biological systems use? Dr. Lewicki will argue that computational principles explain how neural codes are optimally adapted to their sensory environment. Further, it is possible to extend these theories to provide functional theories for higher-level aspects of perception.

Tinkham Veale University Center, CWRU

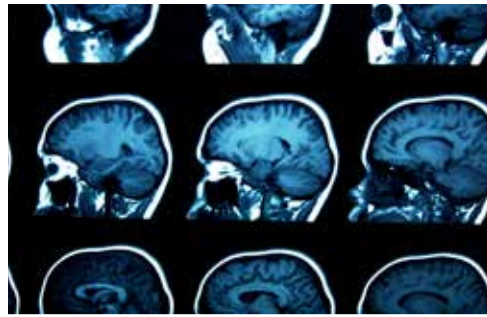
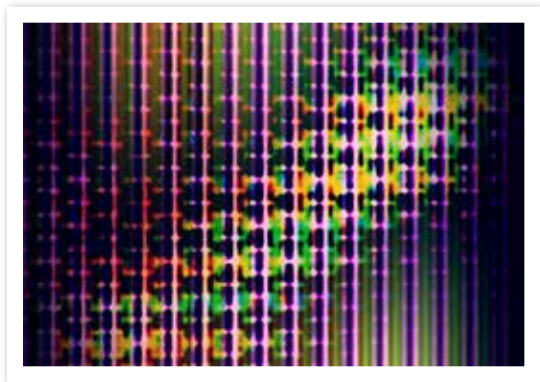
THE MIND-BODY CONNECTION: PART II-MAKING SENSE OUT OF NOISE IN NEURAL CIRCUITS

Roberto F. Galán and Ken Loparo, Professor of Engineering and Chairman, CWRU

Tuesday, November 28

Neural circuits are subject to sources of variability akin to static noise in electrical circuits. Several examples will be presented, showing that unlike man-made devices, neural circuits have adapted not only to cope with different levels of noise but also to take advantage of that intrinsic variability and uncertainty to encode information, modulate neuronal activity, and transform behavior.

Tinkham Veale University Center, CWRU



THE MIND-BODY CONNECTION: PART III-MEMORY: HOW THE BRAIN MAPS MEMORIES IN SPACE

Howard Eichenbaum, Professor, Boston University

Tuesday, December 5

Memory for specific life experiences is characterized by recollection of the flow of events in time and space that compose specific episodes, and this ability depends on a brain area called the hippocampus. Eichenbaum will describe recent complementary evidence of "time cells" in the hippocampus that encode sequential moments in temporally structured experiences. Furthermore, networks of time cells represent the temporal organization of specific memories and predict memory success. In addition, we have traced the origin of timing signals to a cortical area that also carries signals about space to the hippocampus. Taken together, these findings support an emerging view that the hippocampus serves memory by mapping the organization of events within their temporal and spatial context, and connects related memories in the building of knowledge. This capacity to map memories supports our ability to use memory for planning and insight in everyday life challenges.

Cleveland Museum of Natural History

LECTURE SERIES

SUBSTANCE ABUSE: AN AMERICAN EPIDEMIC—A COMMUNITY'S PERSPECTIVE

Moderator: Vince Carrafi, Chair of the Cuyahoga County Opiate Task Force, Cuyahoga County Board of Health

Thursdays, (once per month) September 14; October 19; November 16; December 7
7 p.m.

This series is for you if:

- You are a parent of middle school, high school, or college-age students
- You are a student in middle school, high school or college
- You are a concerned community-minded individual
- You are a social worker, working with addicted patients

What you will get from this series:

- Information on the growing epidemic
- Resources to help those suffering with addiction
- Things you can do locally to help

Landmark Centre—Beachwood

Member and Nonmember cost: free

A COUNTY'S PERSPECTIVE—HOW DID WE GET HERE AND WHAT'S BEING DONE?

Panelists: Kevin Berg, Tenure Track Counseling Faculty at Cuyahoga County Community College; Tom Gilson, Cuyahoga County Medical Examiner and Director of the Regional Forensic Science Laboratory; Emily Metz, Program Coordinator for MetroHealth's Cuyahoga County Project DAWN

Thursday, September 14

Join Kevin Berg, Tom Gilson and Emily Metz to get a brief history of the disease, the growing death toll in Cuyahoga County and the help being provided by the Project DAWN program and the use of Narcan/Naloxone.

WHAT GOES INTO TRAINING FIRST RESPONDERS? WHY SHOULD WE CARE?

Panelists: Mark Singer, Leonard W. Mayo Professor of Family and Child Welfare at the Mandel School of Applied Social Sciences, Deputy Director of the Semi J. and Ruth W. Begun Center for Violence Prevention Research and Education and Co-Director of the Center on Substance Abuse and Mental Illness at CWRU; Tony Weiss, Detective at Cuyahoga Metropolitan Housing Authority Police Department and Sergeant for the Village of Grand River Police Department

Thursday, October 19

There is so much controversy in the news today as to what a first responder needs to do at a crime scene. Join Mark Singer and Detective Tony Weiss as they explain how police officers from the Cuyahoga County Metropolitan Housing Authority Police Department are trained as "first social responders."

SUBURBAN CHALLENGES: MAYORS' CALL TO ACTION

Mayor Merle Gorden of Beachwood; Mayor Kathy Mulcahey of Orange Village; Mayor Patrick Ward of Lyndhurst

Thursday, November 16

Join the mayors of some of our Eastside communities to learn what is happening locally and how you can help.

SOBER-LIVING-HOMES MAKE A DIFFERENCE!

Panelists: Russell Goodwin, LPC, LICDC, founding board member of Sober Living Cleveland; Erin Helm, Executive Director of Woodrow House in Lakewood and Chemical Dependency Counselor; Kelly Meyers, House Manager at Meadowdale Sober Living House

Thursday, December 7

Meet the three incredible people who started and oversee the Meadowdale Sober Living House in Cleveland Heights, and one of the residents benefitting from the work they do.

This series is generously supported by the Melissa Rae Fund In Support of Substance Abuse Education, Advocacy and Change.



MELISSA RAE FUND IN SUPPORT OF SUBSTANCE ABUSE EDUCATION, ADVOCACY AND CHANGE

Has substance abuse touched your life or the life of someone you know?

Support the Siegal Lifelong Learning Program's educational efforts to increase awareness and understanding of the epidemic that is impacting the community.

DONATE at case.edu/lifelonglearning/about/giving
For more information, call 216.368.4623.



THE LAURA & ALVIN SIEGAL
LIFELONG LEARNING
PROGRAM

TRIBE TALK: NEW JEWISH CONVERSATIONS

Moderators: Brian Amkraut, Executive Director of Siegal Lifelong Learning, CWRU; Alanna Cooper, Director of Jewish Lifelong Learning, CWRU

Mondays, September 18; October 16; November 20; December 11
7–8:30 p.m.

Tribe Talk is an edgy, informative, and engaging monthly conversation on trending Jewish news led by Brian Amkraut and Alanna Cooper, our resident Jewish news-junkies.

Landmark Centre—Beachwood

Member of Lifelong Learning and nonmember cost: free

Co-sponsored by the Cleveland Jewish News and the Cleveland Jewish News Foundation



Photo credit: Cleveland Jewish News



THE FRIENDS OF JEWISH LIFELONG LEARNING, formerly Friends of the Aaron Garber Library, are pleased to announce our new identity as a part of the Siegal College Foundation. In this capacity, we continue our historic mission to support the Siegal Lifelong Learning Program at Case Western Reserve University.

To LEARN MORE about the Siegal College Foundation, call **216.368.2091**.

SINGLE EVENTS & LECTURES

THE ELECTION FOR MAYOR: A DISCUSSION ABOUT THE FUTURE OF CLEVELAND

Moderated by Leila Atassi, Cleveland.com;
Panelists Tom Beres, WKYC-TV Reporter Emeritus;
Michael Nelson, President, Cleveland NAACP;
Chris Quinn, Editor and President, Advance Ohio

Tuesday, August 29
7–8:30 p.m.

The city of Cleveland finds itself at a critical juncture in 2017. The upcoming mayoral and council elections in September (primary) and November (general) offer the public a virtually unprecedented choice of candidates in almost every ward of the city. This forum will discuss the critical issues and positions that have been staked out by the major candidates.

Tinkham Veale University Center, CWRU

Member and Nonmember cost: free

★ **Northeast Ohio Public Policy Series**

JEW VS. JEW REVISITED

Samuel Freedman, Author, Columnist and Professor at Columbia University

Thursday, September 7
10–11:30 a.m.

In *Jew vs. Jew* (2000), award-winning author and journalist Samuel Freedman addressed American Jews' battles with each other around questions of identity, authenticity, politics and ideology. Now, American Jews remain divided more than ever, with Israel as a particular flashpoint of contention. Join Freedman as he reflects on where we have come and where we are headed.

Landmark Centre—Beachwood

Member of Lifelong Learning cost: free

Nonmember cost: \$5

Space is limited—Advanced registration required

With the generous support of the Enid and Irving Kushner Endowment Fund to Support Adult Jewish Education of the Jewish Federation of Cleveland



HAVE A LITTLE FAITH: WHY THE NEWS MEDIA GETS RELIGION WRONG

Samuel Freedman, Author, Columnist and Professor at Columbia University

Thursday, September 7
7 p.m.

Never before has religion been a more significant and controversial part of public life in America—the most religious nation in the Western world. So why have journalists so often struggled to knowledgeably and incisively report on the role of faith in politics, education, foreign policy, and other areas? Are America's newsrooms anti-religious, innocently ignorant of religion, or something else?



Landmark Centre—Beachwood

Member of Lifelong Learning cost: free

Nonmember cost: \$5

Space is limited—Advanced registration required

With the generous support of the Enid and Irving Kushner Endowment Fund to Support Adult Jewish Education of the Jewish Federation of Cleveland

THE JEWISH MYSTICS OF SAFED

Matt Goldish, Samuel M. and Esther Melton Chair of History, The Ohio State University

Monday, September 11
7 p.m.

Five hundred years ago, the Galilean town of Safed was home to a circle of mystics, who studied the Kabbalah's esoteric texts and engaged in new religious practices designed to bring them closer to the Divine. This lecture focuses on the leading figures of this group, how they ended up in Safed, and some of the ideas they studied and taught. We will be aided by the tales that appear in *Shivhei ha-Ari*, a collection of stories about Rabbi Isaac Luria and his colleagues.

Landmark Centre—Beachwood

Member and Nonmember cost: free

OHIO DRUG PRICE RELIEF ACT—BALLOT ISSUE: A LOOK AT BOTH SIDES

Moderated by Jeremy Pelzer, Cleveland.com
Panelists: Scott Knoer, Chief Pharmacy Officer, Cleveland Clinic; J.B. Silvers, PhD, CWRU Weatherhead School of Management and School of Medicine; Representative from Ohio Taxpayers for Lower Drug Prices; Representative from Ohioans Against the Deceptive Rx Ballot Issue

Tuesday, September 19
7–8:30 p.m.

The Ohio Drug Price Relief Act is a citizen-initiated statute slated for the November ballot. It would require the state of Ohio to pay no more for prescription drugs than the U.S. Department of Veterans Affairs, which has negotiated a discount of up to 40 percent. Is this a good idea? Panelists will include people on both sides of the issue.

Cuyahoga County Public Library, Bay Village Branch

Member and Nonmember cost: free

Co-sponsored by Cleveland.com/Plain Dealer, CWRU Siegal Lifelong Learning, LWV - Greater Cleveland, Cuyahoga County Library System

★Northeast Ohio Public Policy Series



ACE GOODTIME III ADVENTURE

Friday, September 22
10:45 a.m.–2 p.m.

For courtesy, comfort, and just plain fun, you cannot match the experience of a cruise on the Cuyahoga River and Lake Erie aboard Cleveland's largest sightseeing vessel. Enjoy the fast-changing panorama of Cleveland's skyline and the Flats area as you listen to Larry Morrow point out the many sights and little-known historical facts about our All-American City.

Meet at the Goodtime III ticket office

Member of ACE cost: \$35
Nonmember cost: \$39



OHIO'S INFANT MORTALITY RATE: WHY IS IT SO BAD?

Moderated by Brie Zeltner, *The Plain Dealer*

Wednesday, September 27
7–8:30 p.m.

Ohio has one of the worst levels of infant mortality in the entire country. How is this possible and what is being done to improve survival rates? This discussion promises to be thoughtful and reflective of current policy and new thinking for future initiatives.

Cleveland Heights-University Heights Public Library

Member and Nonmember cost: free

★Northeast Ohio Public Policy Series

GOD AND THE GOALPOSTS: A BRIEF HISTORY OF RELIGION, SPORTS, POLITICS, WAR, AND ART

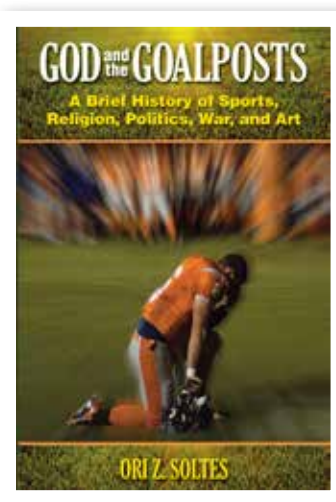
Ori Soltes, Professor, Georgetown University

Sunday, October 8
10 a.m.

The interpenetration of sports and religion is as old as history and as wide as geography. The angles of interpenetration have been diverse—from the Bible to the *Iliad* and the *Aeneid*, from gladiatorial contests to the Crusades to chess, from the Mayan game of pok-a-pok to lacrosse to contemporary NBA championship games. Moreover, the sports/religion matrix has always been interwoven with politics (from which religion has rarely strayed), war (for which sports has always offered a surrogate) and art (which captures so much of this in words and images, from Greek vase paintings to contemporary films). Give this subject an hour and you will never watch a game the same way again.

Landmark Centre—Beachwood

Member of Lifelong Learning cost: \$5
Nonmember cost: \$10
Light breakfast included



SINGLE EVENTS & LECTURES



ACE LECTURE DAY: THE TANGLED TALE OF TURKEY

Moderator: John Grabowski, Associate Professor of Applied History, CWRU, and Historian and Senior Vice President for Research and Publications, Western Reserve Historical Society

Panelists: Sinan Ciddi, Executive Director, Institute of Turkish Studies, Georgetown University
Ori Z. Soltes, Professor of History, Georgetown University

Monday, October 9
9:15 a.m.–2 p.m.

This timely event focuses on the background and internal and external ongoing events in Turkey today.

Mayfield Sand Ridge Club

Member of ACE cost: \$35

Nonmember cost: \$45



HOME RULE FOR NORTHEAST OHIO COMMUNITIES: SHOULD IT BE STRONGER OR WEAKER?

Moderated by Tom Beres, WKYC TV Reporter Emeritus

Tuesday, October 17
6:30–8 p.m.

Municipal home rule was a critical objective for Cleveland Mayor Tom L. Johnson and his followers, which they successfully included in the Ohio Constitution of 1912. However, ever since, the Ohio state legislature and Supreme Court have taken local power away in many key policy areas. We will discuss both sides of this issue and how it relates to Northeast Ohio cities today.

Lakewood Public Library, Main

Member and Nonmember cost: free

Co-sponsored by the Lakewood Public Library

★ **Northeast Ohio Public Policy Series**

WHAT ARE THE DEAD SEA SCROLLS AND WHY ARE THEY IMPORTANT?

Alex Jassen, Associate Professor of Hebrew and Judaic Studies and Director of Graduate Studies in the Skirball Department of Hebrew and Judaic Studies at New York University

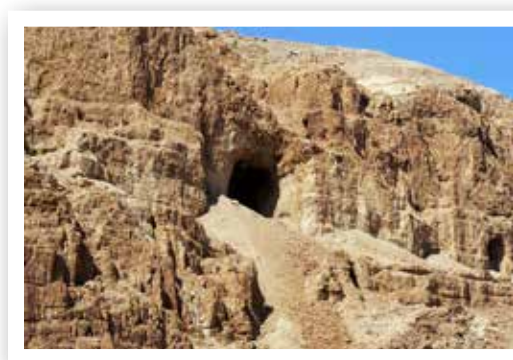
Wednesday, October 18
7 p.m.

Have you ever wondered what the Dead Sea Scrolls are and why there is so much controversy surrounding them? In this lecture, Professor Alex Jassen reveals what they are, where they come from, when they were composed, and why they have become scandalous.

Landmark Centre—Beachwood

Member of Lifelong Learning cost: free

Nonmember cost: \$5



CURRENT ISSUES IN DEAD SEA SCROLLS SCHOLARSHIP

Alex Jassen, Associate Professor of Hebrew and Judaic Studies and Director of Graduate Studies in the Skirball Department of Hebrew and Judaic Studies at New York University

Thursday, October 19
10–11:30 a.m.

In this lecture, Professor Alex Jassen examines the exciting insights that the Dead Sea Scrolls continue to offer 70 years after their discovery. This lecture explores how the Dead Sea Scrolls contribute to our understanding of the Bible's origins, the growth of Judaism, and emergence of Christianity.

Landmark Centre—Beachwood

Member of Lifelong Learning cost: free

Nonmember cost: \$5

SEARCHING FOR INDIVIDUALS IN THE INTERNATIONAL TRACING SERVICE AT THE USHMM

Diane F. Afoumado, Chief of the Research and Reference Branch at the Holocaust Survivors and Victims Resource Center, United States Holocaust Memorial Museum

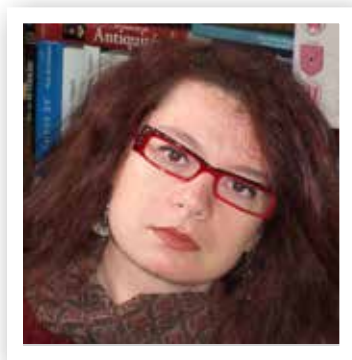
Sunday, October 22
2–3:30 p.m.

Learn about one of the largest Holocaust archives in the world, the International Tracing Service (ITS), located in Bad Arolsen, Germany. Dr. Diane Afoumado will share how to use the ITS collection, housed in the United States at the United States Holocaust Memorial Museum in Washington, D.C. Opened in 2007, the ITS digital collection contains about 200 million digital images of documentation such as: camp arrival lists, grave locations, transport lists, prisoner cards, forced labor lists, death lists, displaced person applications for assistance, deportation lists, emigration applications/questionnaires, registration and work cards, sometimes with photographs. The archive was established by the Allied powers after World War II to help reunite separated families and to trace missing family members. Dr. Afoumado will be available for a limited number of individual appointments to search ITS.

Laurel School—Lyman Campus

Member and Nonmember cost: free

Diane Afoumado's appearance is co-sponsored by the Jewish Genealogy Society of Cleveland, Kol Israel Foundation, Laurel School, Siegal Lifelong Learning Program of Case Western Reserve University and the United States Holocaust Memorial Museum.



THE MAKING OF THE BALFOUR DECLARATION

Jonathan Schneer, Professor of History and Sociology, Georgia Tech-Ivan Allen College of Liberal Arts

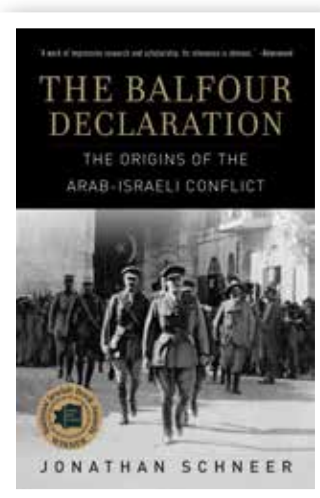
Monday, October 23
7 p.m.

Exactly 100 years ago, Great Britain issued the Balfour Declaration, which promised to support the establishment of a national home for the Jewish people in Palestine. Professor Jonathan Schneer will explain why the British government made this vow and the historical impact of this commitment. British motives were not so straightforward as one might think.

Landmark Centre—Beachwood

Member of Lifelong Learning cost: free

Nonmember cost: \$5



DEAD SEA CAVES: NEW ARCHAEOLOGICAL DISCOVERIES

Oren Gutfeld, Archaeologist and Researcher at the Hebrew University's Institute of Archaeology

Monday, November 13
7 p.m.

The Dead Sea scrolls, found in the 1940s, offered groundbreaking new information about the history of the Hebrew Bible and the origins of Christianity. This past winter, archaeologist Oren Gutfeld discovered a new scroll cave. Although the contents were looted, jug-shards, textiles, and parchments that were left behind shed new light on an old and intriguing history.

Landmark Centre—Beachwood

Member of Lifelong Learning cost: free

Nonmember cost: \$5

With the generous support of the Rina and Samuel M. Frankel Fund of the Laura and Alvin Siegal College of Judaic Studies Educational Foundation at the Jewish Community Federation of Cleveland.

SINGLE EVENTS & LECTURES

EXCAVATING AND REBUILDING RUINS IN JERUSALEM'S JEWISH QUARTER

Oren Gutfeld, Archaeologist and Researcher at
the Hebrew University's Institute of Archaeology

Tuesday, November 14
10 a.m.

When Jordan occupied Jerusalem's Old City in 1948, the Hurvah Synagogue and Tiferet Israel Synagogue were bombed, leaving behind only rubble. In recent years, both sites have been excavated and rebuilt. Archaeologist Oren Gutfeld, who directed the dig at Tiferet Israel, presents the rich finds discovered on location, dating back to the Second Temple era.

Landmark Centre—Beachwood

Member of Lifelong Learning cost: free
Nonmember cost: \$5

A LOOK AT THE POLITICAL CRYSTAL BALL FOR 2018

Moderated by Andrew Tobias, Cleveland.com

Thursday, November 16
7–8:30 p.m.

2018 promises to be an interesting year for politics in Ohio. This panel will explore the major political races including campaigns for U.S. Senate, Ohio governor, secretary of state, attorney general, auditor, treasurer and the state legislature.

Cuyahoga County Public Library, Parma-Snow Branch

Member and Nonmember cost: free

Co-sponsored by the Cuyahoga County Public Library



★ Northeast Ohio Public Policy Series

THE MURDER AND THE SILENCE: UNCOVERING LITHUANIA'S HOLOCAUST COLLABORATION

Ruta Vanagaite, Author and Journalist

Sunday, December 3
4 p.m.

When best-selling author and journalist Ruta Vanagaite discovered that her own relatives were complicit in the murder of Lithuanian Jews, she became determined to awaken the consciousness of her fellow countrymen. Joining up with Efraim Zuroff, director of the Simon Wiesenthal Center, the two co-authored *Musiskiai (Our People: Journey with an Enemy)* which uncovers Lithuanians' wartime atrocities. Vanagaite discusses the controversy her work has stirred and the search for truth that it has inspired among many young Lithuanians.

Landmark Centre—Beachwood

Member of Lifelong Learning cost: free
Nonmember cost: \$5



WIRED COMMUNICATION: HOW OUR SOCIAL WORLD IS SHAPED BY TECHNOLOGY

Jeffrey Schein, Senior Education Consultant for the
Kaplan Center for Jewish Peoplehood and director
of the Text Me: Ancient Jewish Wisdom Meets
Contemporary Technology project

Thursday, February 1
7 p.m.

As early as 1967, Marshall McLuhan coined the term "global village" and—as though peeking into a crystal ball—he predicted the kind of communication we now experience as the World Wide Web. Thirty years later, Sherry Turkle, professor at MIT and poster child of *Wired* magazine, also prophesized new forms of communication. More recently, though, her take on how we are being shaped by digital communication has turned dark and critical. Through video, discussion, and the wisdom of Jewish texts, this session addresses what we can learn from these two visionaries about the nature of wired communication today.

Landmark Centre—Beachwood

Member of Lifelong Learning cost: free
Nonmember cost: \$5

SPONSORS AND TEAM

Lifelong Learning Team

BRIAN AMKRAUT

Executive Director

ALANNA COOPER

Director of Jewish Lifelong Learning

SHERYL HIRSH

Assistant Director of Jewish Lifelong Learning

MICHELLE MILLER

Manager of Educational Travel

LORRAINE NELSON

Program Administrator

FELICIA WESTBROOKS

Program Administrator/Department Assistant III

ELANA GOODWIN

Web and Communications Associate

Sponsors

Advance Ohio

Apollo's Fire

Appletree Books

Association for Continuing Education (ACE)

Association for Jewish Studies

Cleveland Jewish Arts and Culture Lab, Mandel

Jewish Community Center of Cleveland

Cleveland.com

Cleveland Jewish News

Cleveland Jewish News Foundation

Cleveland Museum of Art

Cleveland Museum of Natural History

Cuyahoga County Public Library

First Interstate Properties Ltd.

Flora Stone Mather Center for Women

Rina and Samuel M. Frankel Fund of the

Laura and Alvin Siegal College of Judaic Studies

Educational Foundation at the Jewish Community Federation of Cleveland

Institute for the Science of Origins

Jewish Federation of Cleveland

Jewish Genealogy Society

Kelvin Smith Library

Kol Israel Foundation

Enid and Irving Kushner Endowment Fund to

Support Adult Jewish Education of the Jewish Federation of Cleveland

Lakewood Public Library

Laurel School

Maltz Museum of Jewish Heritage

Oheb Zedek-Cedar Sinai Synagogue

Salo W. and Jeannette M. Baron Foundation

Siegal College Educational Foundation

Squire Valleevue and Valley Ridge Farms

The Friends of Jewish Lifelong Learning

The League of Women Voters—Greater Cleveland

THANK
YOU

...for your continued support.

PROGRAMS

CONVERSATIONS AT JUDSON PARK

This lecture series, offered in collaboration with Judson Park, is a unique monthly luncheon program open to the public. A variety of academic and contemporary issues are discussed. Led by local university faculty and laypeople, these forums provide participants with the opportunity to engage in meaningful conversations and ask questions of topic experts.

EASTSIDE CONVERSATIONS

Loosely fashioned after the popular City Club Forum, these sessions provide the community with a unique luncheon program once a month in which contemporary issues are discussed. Led by local university faculty and laypeople, this forum provides participants the opportunity to engage in meaningful questions and conversations. For more information on Eastside Conversations, contact Helga Miller, program coordinator, at 216.368.1284.

JEWISH STUDIES

Case Western Reserve University's Laura and Alvin Siegal Lifelong Learning Program continues the legacy of Jewish adult education courses offered for nearly nine decades through the Laura and Alvin Siegal College of Judaic Studies and its predecessor institutions. Offerings include courses in basic to advanced Hebrew language instruction, Bible study, Jewish thought, history, culture and literature. The Distinguished Lecture Series brings world-renowned experts in Jewish studies to engage our community. Film screenings and cultural programs explore contemporary Jewish life in America and abroad.

NORTHEAST OHIO PUBLIC POLICY SERIES

These engaging forums bring together a panel of local leaders and experts who exchange ideas and share views on a particular issue affecting Northeast Ohio. Held approximately once a month throughout the community, each discussion begins at 7 p.m. and is free and open to the public. This series is co-sponsored by the Siegal Lifelong Learning Program, the League of Women Voters of Greater Cleveland, Advance Ohio, Cuyahoga County Public Library, Lakewood Public Library, Cleveland Heights-University Heights Public Library, Solon Community Center, and corporate sponsor First Interstate Properties Ltd.

★ [Northeast Ohio Public Policy Series](#)

OFF-CAMPUS STUDIES

Off-Campus Studies is a program offered in collaboration with the Association for Continuing Education (ACE). It began in 1947 as Living Room Learning, developed by Grazella Shepherd at Cleveland College, who encouraged the Women's Association, predecessor of ACE, to help design and promote classes. Courses are eight weeks long and meet for 1.5 hours per class (unless otherwise noted) in locations across Greater Cleveland. There are no written assignments or exams, but rather the classes provide an open environment for lively discussion based on meaningful examination of shared texts. Leader-Teachers facilitate the discussion and provide academic background and context. Off-Campus Studies is unique among continuing education programs because it is organized in collaboration with its participants. Designated class coordinators volunteer to serve as the liaison between the office and the study groups. The discussion groups select the courses with the help of the class coordinator and the office. Participation is open to everyone, and groups welcome new members with enthusiasm. New groups are welcome. Please call 216.368.2090 to establish a study group in your neighborhood. Sessions require a minimum of 10 participants. All Off-Campus Studies courses are listed by subject matter under the Courses section.

◆ [Off-Campus Studies](#)

ORIGINS SCIENCE SCHOLARS PROGRAM

The Institute for the Science of Origins (ISO) is a partnership of Case Western Reserve University, the Cleveland Museum of Natural History and ideastream. During this unique program, members of the community engage with one another and with leading scholars of the origins sciences to investigate rapidly developing areas of origins science. Each evening begins with a presentation by a world-class researcher, followed by complimentary dinner and open discussion among all participants.



SENIOR SCHOLARS

Senior Scholars is an 11-week program that meets three afternoons per week 1:30–3:30 p.m., and features academic lectures by university faculty and local experts on a variety of topics. While the format is lecture style, the afternoons are informal and interactive with opportunity to ask questions and discuss the topics of the day. See full listings and details throughout the catalog.

✂ Senior Scholars

Senior Scholars is generously supported by the Jane and Jon Outcalt Foundation.

Senior Scholars course cost for the full fall semester:

Member of Lifelong Learning cost: \$235

Nonmember cost: \$260

Senior Scholars course for one day per week:

Member of Lifelong Learning cost: \$115

Nonmember cost: \$135

Location: Landmark Centre—Beachwood

Tuesdays

▪ ORIGINS SCIENCE SERIES

Glenn Starkman, Professor of Physics, CWRU

Patricia Princehouse, Director,
Evolutionary Biology Program, CWRU

Tuesdays, September 5–October 10

(see full listing on page 26)

▪ THE REFORMATION

Peter Haas, Emeritus Professor
of Jewish Studies, CWRU

Tuesdays, October 17–November 14

(see full listing on page 26)

Wednesdays

▪ THE ROBERTS COURT

Faculty, School of Law, CWRU

Wednesdays, September 6–October 4

(see full listing on page 24)

▪ JAZZ-FROM ITS ORIGINS TO THE PRESENT

Paul Ferguson, Senior Instructor,
Department of Music, CWRU

Wednesdays, October 11–November 15

(see full listing on page 6)

Thursdays

▪ U.S. AND LATIN AMERICAN RELATIONS: FROM THE COLD WAR TO THE TRUMP ADMINISTRATION

Jose Sola, Associate Professor of History,
Cleveland State University

Thursdays, September 7–October 12

(see full listing on page 24)

▪ TURKEY: UNDERSTANDING THE PRESENT BY SEEING THE PAST

John Grabowski, Associate Professor
of Applied History, CWRU

Thursdays, October 19–November 16

(see full listing on page 25)

UNIVERSITY FARM PROGRAM

Owned by Case Western Reserve, the University Farm, which comprises Squire Valleevue and Valley Ridge Farms, is a beautiful 389-acre property in Hunting Valley, Ohio, featuring forests, ravines, waterfalls, meadows, ponds and a self-contained watershed. Farm classes take advantage of this spectacular landscape for inspiration and as a setting for learning about nature, cultivation and the environment.



REGISTRATION

Registration Policies

MEMBERSHIP

The Siegal Lifelong Learning Program has implemented a membership program. The membership fee replaces prior years' annual registration fee. Membership is optional and is valid for a rolling 12-month period. Members receive priority registration, exclusive discounts, invitations to members-only events and much more. A complete list of membership benefits can be found at case.edu/lifelonglearning/membership/. The cost structure for membership is \$36 for the individual or \$62 for member plus one. Nonmembers may still register for most events and classes, but do not enjoy priority registration or member discounts or benefits. Additional member benefits may be available to participants in the Siegal Lifelong Learning Annual Fund.

DISCOUNTS

Case Western Reserve University alumni and retirees (faculty and staff), ACE members and Friends of Jewish Lifelong Learning members are entitled to a 10 percent discount on course fees.

WITHDRAWALS AND SUBSTITUTIONS

- A 100 percent refund will be issued to the registered student if a completed withdrawal request is received prior to five business days before the start date of the class or lecture.
- A 50 percent refund will be issued for withdrawal requests received on or after five, but prior to three business days before the start date of the class or lecture.
- There is no refund for withdrawal requests received on or after three days prior to the start date of the class or lecture; no exceptions will be made.
- If unable to attend, you may substitute another person at no additional cost; please notify of change or substitution at least one day prior to the start date of the class or lecture.
- Withdrawal requests must come directly from the student or his/her designee; the official receipt date is the day and time the request is received in the Lifelong Learning office.

CANCELLATIONS

Although Lifelong Learning is committed to delivering all classes, workshops or lectures that are scheduled, there are times when a class, workshop or lecture is canceled due to minimum enrollment requirements. If Lifelong Learning cancels a class, a 100 percent refund is automatically processed for participants who do not choose to transfer to another available class. Lifelong Learning staff will make every attempt to notify participants of cancellations via registration information. Participants may also call 216.368.2090 for cancellations.

REFUNDS

Refunds can be processed using the credit card used at the time of registration and payment. All other forms of payment will be refunded by check from Case Western Reserve University to the student. Please allow three to four weeks for the refund check to be processed and mailed to the address given at the time of registration. If there has been an address change, please provide the corrected address with your withdrawal request.

REGISTRATION FORM

MAIL: Send completed form to address below.

ONLINE: case.edu/lifelonglearning

PHONE: 216.368.2090 or 216.368.2091

Name _____

Address _____

City _____ State _____ Zip _____

Telephone _____ Email _____

LIST NAME OF COURSE, LECTURE, EVENT OR WORKSHOP BELOW.

Program Name _____ FEE \$ _____

Program Name _____ FEE \$ _____

Program Name _____ FEE \$ _____

Program Name _____ FEE \$ _____

Program Name _____ FEE \$ _____

Program Name _____ FEE \$ _____

DISCOUNT OF 10% ON COURSES DISCOUNT \$ (- _____)
(ACE Members, CWRU Alumni, current or former CWRU
faculty and staff, Friends of Jewish Lifelong Learning)

MEMBERSHIP FEE (Rolling 12 Months) INDIVIDUAL MEMBER \$36 _____

MEMBER PLUS ONE \$62 _____

Name of Plus One (if applicable) _____

MORE INFORMATION ABOUT MEMBER BENEFITS:
case.edu/lifelonglearning/membership/

TOTAL _____

If paying by check please make payable to
Case Western Reserve University and mail to:

The Laura and Alvin Siegal Lifelong Learning Program
Case Western Reserve University
10900 Euclid Avenue, Thwing Center, Room 153
Cleveland, OH 44106-7116

CREDIT CARD

MasterCard Visa Discover

TOTAL \$ _____

Name on Card Exp. (MM/YY)

Account No. CV Code



THE LAURA & ALVIN SIEGAL
LIFELONG LEARNING
PROGRAM

LOCATIONS

Bay United Methodist Church
29931 Lake Rd.
Bay Village, OH 44140

Breckenridge Village
36851 Ridge Rd.
Willoughby, OH 44094

Brecksville United Church of Christ
23 Public Sq.
Brecksville, OH 44141

Cleveland Heights-University Heights
Public Library
2345 Lee Rd.
Cleveland Heights, OH 44118

Cleveland Museum of Art
11150 East Blvd.
Cleveland, OH 44106

Cleveland Skating Club
2500 Kemper Rd.
Cleveland, OH 44120

Cleveland Museum of Natural History
1 Wade Oval Dr.
Cleveland, OH 44106

Cuyahoga County Public Library
Bay Village Branch
502 Cahoon Rd.
Cleveland, OH 44140

Cuyahoga County Public Library
Independence Branch
6361 Selig Dr.
Independence, OH 44131

Cuyahoga County Public Library
Orange Branch
31300 Chagrin Blvd.
Cleveland, OH 44124

Cuyahoga County Public Library
Parma-Snow Branch
2111 Snow Rd.
Parma, OH 44134

First Unitarian Church of Cleveland
21600 Shaker Blvd.
Shaker Heights, OH 44122

Gates Mills Community House
1460 Chagrin River Rd.
Gates Mills, OH 44040

Good Time III
825 E. 9th St.
Cleveland, OH 44114

Hamlet Village Clubhouse
324 Hamlet Hills Dr.
Chagrin Falls, OH 44022

Judson Manor
1890 East 107th St.
Cleveland, OH 44106

Judson Park
2181 Ambleside Dr.
Cleveland, OH 44106

Lakewood Public Library, Main
15425 Detroit Ave.
Lakewood, OH 44107

Lakewood United Methodist Church
15700 Detroit Ave.
Lakewood, OH 44107

Landmark Centre Building
25700 Science Park Dr., Suite 100
Beachwood, OH 44122

Laurel Lake Community Room
200 Laurel Lake Dr.
Hudson, OH 44236

Laurel School—Lyman Campus
1 Lyman Cir.
Shaker Heights, OH 44122

Mayfield Sand Ridge Club
1545 Sheridan Rd.
South Euclid, OH 44121

Middleburg Heights Church
7165 Big Creek Pky.
Middleburg Heights, OH 44130

Private Residence
13803 Cormere Ave.
Cleveland, OH 44120

Rocky River Public Library
1600 Hampton Rd.
Rocky River, OH 44116

Rosemont Country Club
3777 Rosemont Blvd.
Fairlawn, OH 44333

South Franklin Circle
16600 Warren Ct.
Chagrin Falls, OH 44023

Squire Valleevue and
Valley Ridge Farms
37125 Fairmount Blvd.
Hunting Valley, OH 44022

St. Paul's Episcopal Church
2747 Fairmount Blvd.
Cleveland Heights, OH 44118

Starr House
284 Washington Ave.
Elyria, OH 44035

Tinkham Veale University Center
CWRU campus
11038 Bellflower Rd.
Cleveland, OH 44106



THE LAURA & ALVIN SIEGAL
LIFELONG LEARNING
PROGRAM

*Siegel Lifelong Learning Program
Case Western Reserve University
10900 Euclid Avenue
Cleveland, Ohio 44106-7116*

FALL 2017 KICKOFF



Photo by Sara Barrett

HAVE A LITTLE FAITH: WHY THE NEWS MEDIA GETS RELIGION WRONG

Samuel Freedman, Author, Columnist
and Professor at Columbia University

Thursday, September 7 | 7 p.m.

Landmark Centre—Beachwood

Member of Lifelong Learning cost: free

Nonmember cost: \$5

See page 4 for more details.

FOR MORE INFORMATION AND TO REGISTER:

case.edu/lifelonglearning or call 216.368.2090 or 216.368.2091