



*FOR THE LOVE OF LEARNING*

SPRING 2017  
CATALOG

---

## ABOUT THE SIEGAL LIFELONG LEARNING PROGRAM

The Siegal Lifelong Learning Program connects the academic world with the general community. Through innovative and engaging programming, learners of all ages, on campus or in the Cleveland community, are able to share their love of learning. Through classes, workshops or lectures, participants can interact with internationally renowned scholars who share their cutting-edge research or engage in the ongoing conversation of current and interesting topics. For those who have never taken a class or attended a lecture—please join us. For those who have studied with Siegal Lifelong Learning before—welcome back!

---

## REGISTRATION

### Register Online

Register online through our secure site at [case.edu/lifelonglearning](http://case.edu/lifelonglearning)

### Register by Mail

Return the registration form on page 44 by mail to:

The Laura and Alvin Siegal Lifelong Learning Program  
Case Western Reserve University  
10900 Euclid Ave.  
Cleveland, OH 44106-7116

### Register by Phone

Call 216.368.2090 or  
216.368.2091 (Beachwood office)  
to register and pay with credit card by phone.

For the most up-to-date programming or weather alerts visit our website.

Financial assistance is available.

## HOW TO REACH US

### CWRU Campus

p 216.368.2090  
f 216.368.1861

### Beachwood Campus

p 216.368.2091  
f 216.368.1003

### email:

[lifelonglearning@case.edu](mailto:lifelonglearning@case.edu)

### website:

[case.edu/lifelonglearning](http://case.edu/lifelonglearning)

### Mailing Address

The Laura and Alvin Siegal  
Lifelong Learning Program  
Case Western Reserve University  
10900 Euclid Ave.  
Cleveland, OH 44106-7116

Landmark Centre Building  
25700 Science Park Drive  
Suite 100  
Beachwood, OH 44122

### Visitors and Deliveries

Thwing Center, Room 153  
11111 Euclid Ave.  
Cleveland, OH 44106-7116

## CONTENTS

Message from the Director .....	2
Single Events and Lectures .....	4
<b>Lecture Series</b>	
Acclaimed Authors Luncheon Series .....	10
Conversations at Judson Park .....	11
Eastside Conversations .....	12
Elie Wiesel's Legacy .....	14
Origins Science Scholars Program .....	16
Tribe Talk: New Jewish Conversations .....	17
<b>Courses</b>	
■ Art and Music .....	18
■ History and Culture .....	19
■ Horticulture and Nature .....	24
■ Jewish Studies .....	26
■ Language: Hebrew .....	28
■ Literature .....	30
■ Politics and Contemporary Issues .....	34
■ Religion, Philosophy and Science .....	36
■ Writing .....	38
<b>Programs</b>	
Conversations at Judson Park .....	40
Eastside Conversations .....	40
Jewish Studies .....	40
Northeast Ohio Public Policy Series .....	40
Off-Campus Studies .....	40
Origins Science Scholars .....	40
Senior Scholars .....	41
University Farm Program .....	41
<b>Sponsors and Team</b> .....	42
<b>Registration Policies</b> .....	43
<b>Registration Form</b> .....	44
<b>Locations</b> .....	45



## MESSAGE FROM THE DIRECTOR

We are thrilled to welcome all of you into our new teaching facility in Beachwood—with newly renovated classrooms, easy access to the highway and a warm welcoming social environment. We hope you will take advantage of this space and the many locations we use throughout Greater Cleveland. Please join us at our upcoming Open House Celebration from 7-9 p.m. Wednesday, February 1, at Landmark Centre Building, 25700 Science Park Drive, Suite 100, Beachwood. Come celebrate our new location with instructor appreciation, course samplings and refreshments.

This coming spring season includes a number of regularly scheduled programs and events, including a great Senior Scholars lineup, both new and veteran instructors teaching in Off-Campus Studies, our exciting Eastside Conversations lecture series in Beachwood, our Northeast Ohio Public Policy Series throughout Greater Cleveland and the Origins Science Scholars Series in University Circle. ACE Book Discussion Day also represents a regular spring highlight for our community. We have a number of new additions to our programming, including a lunch series at Judson Park beginning this April, and a relaunch of our monthly Tribe Talk program now in partnership with the *Cleveland Jewish News*.

Last spring saw the passing of Elie Wiesel, a Nobel laureate and towering figure in both literature and public discourse around genocide. We commemorate his legacy with a series of programs later in the spring.

As excited as we are about our continually expanding slate of programs, our success merely reflects the dedication of our learning community and your commitment to pursuing a true life of learning. Your support, whether through membership in Siegal Lifelong Learning, participating in our activities or contributing philanthropically to our program, remains a critical element of our program's ability to fulfill its mission of connecting the university with our community in Northeast Ohio.

I thank you all for your continued commitment to lifelong learning.

A handwritten signature in blue ink, appearing to read 'B. Amkraut', written in a cursive style.

**BRIAN AMKRAUT**  
Executive Director

# OPEN HOUSE CELEBRATION

---

WEDNESDAY, FEBRUARY 1 FROM 7–9 P.M.

We've moved our Beachwood office! Please join us to celebrate our new location with instructor appreciation, course samplings and refreshments.

Landmark Centre Building, 25700 Science Park Drive, Suite 100, Beachwood.



FOR MORE INFORMATION, VISIT:  
[case.edu/lifelonglearning](https://case.edu/lifelonglearning) or call **216.368.2090**



# SINGLE EVENTS & LECTURES

## THE PROPOSED MERGER OF CLEVELAND AND EAST CLEVELAND

Tuesday, January 31  
7–8:30 p.m.

Moderator: Nick Castele, Reporter/Producer,  
WCPN ideastream

Panelists: Jeffrey Johnson, Cleveland Councilman, 10<sup>th</sup> Ward;  
Kevin Kelley, Cleveland Council President; Nate Martin, East  
Cleveland Council President

This lecture examines the proposed merger of Cleveland  
and East Cleveland. How could this happen? Should a  
merger of the two cities happen? What are the implications?

Tinkham Veale University Center, CWRU campus

Member and Nonmember of Lifelong Learning Price: free  
Advance registration recommended

*Co-sponsored by the League of Women Voters of Greater  
Cleveland, Advance Ohio, Cuyahoga County Public Library,  
Lakewood Public Library, Cleveland Heights-University  
Heights Public Library, Solon Community Center, and  
corporate sponsor First Interstate Properties Ltd.*

★ Northeast Ohio Public Policy Series

## ACE CLEVELAND GEMS TOUR: UNIVERSITY HOSPITALS ART COLLECTION

Friday, February 3  
11:15 a.m.–2:15 p.m.

Tom Huck, Curator of Art Collections, University Hospitals

This tour will explore some of the outstanding art on  
the main campus of University Hospitals. A buffet lunch  
and a talk by the curator will precede the tour.

University Hospitals of Cleveland, Lerner Tower

ACE Member Price: \$25  
ACE Nonmember Price: \$30  
Prices include a buffet lunch  
Advance registration required

## CAN JEWISH ART BE CONTEMPORARY?

Monday, February 6  
7 p.m.

Ben Schachter, Professor of Visual Art, Saint Vincent College

What happens when the styles and methods of  
contemporary art are brought together with Jewish texts?  
Can minimalism, conceptual art and pop art be used as  
vehicles for Jewish expression? What about installation,  
performance and interactive art? Beyond the retelling of  
biblical stories and creation of Jewish ritual objects,  
something new is starting to emerge. This lecture explores  
these current trends.

Landmark Centre—Beachwood

Member of Lifelong Learning Price: free  
Nonmember Price: \$5  
Advance registration recommended

*Co-sponsored by the Cleveland Jewish Arts and Culture Lab,  
Mandel Jewish Community Center of Cleveland*

## A JEWISH MESSIAH: TALE OF A CONVINCING IMPOSTER, 1666

Monday, February 20  
7 p.m.

Matt Goldish, Samuel M. and Esther Melton Chair  
of History, The Ohio State University

A messiah is understood to be a human agent sent by God  
to save people. While Christians expect Jesus' Second  
Coming, Jews also expect a messiah. Many contenders have  
appeared throughout history, but Shabbatai Zevi, whose  
influence was felt by Jews across the Ottoman Empire, was  
most famous. This lecture explores the historical and  
religious context that made Zevi such a believable Jewish  
messianic figure.

Landmark Centre—Beachwood

Member of Lifelong Learning Price: free  
Nonmember Price: \$5  
Advance registration recommended

*This lecture is made possible through the generous support  
of the David and Robert Stein Family Foundation in memory  
of Paul N. Stein and Robert L. Stein.*

## WILL CLEVELAND'S EASTSIDE GENTRIFY?

Tuesday, February 21  
7–8:30 p.m.

Moderator: Steven Litt, Art, Architecture, Urban Design  
and City Planning Reporter, *The Plain Dealer*

Panelists: Wes Finch, Founder and Chairman, The Finch  
Group; Mansfield Frazier, Journalist, Business Owner and  
Hough Resident; Michael Fleming, Executive Director, St.  
Clair Superior Development Corp.; Jason Segedy, Director of  
Planning and Urban Development, City of Akron

The lecture will discuss the gentrification of Cleveland's  
Eastside. Can it be done equitably?

Cleveland Heights/University Heights Library—Lee Road

Member and nonmember of Lifelong Learning Price: free  
Advance registration recommended

*Co-sponsored by the League of Women Voters of Greater  
Cleveland, Advance Ohio, Cuyahoga County Public Library,  
Lakewood Public Library, Cleveland Heights-University  
Heights Public Library, Solon Community Center, and  
corporate sponsor First Interstate Properties Ltd.*

★ Northeast Ohio Public Policy Series

**TO BE GREEK OR NOT TO BE GREEK?  
ANCIENT JUDAISM CONFRONTS HELLENISM**

Wednesday, March 15  
7 p.m.

Brian Amkraut, Executive Director of Lifelong Learning, CWRU

This session examines the early Hellenistic era in the Land of Israel, specifically the conflict generated within the Jewish community. What specific geopolitical and cultural factors led to the strife and how did various segments of the community respond? *The People vs. the Maccabees*, a mock trial presented by Kol HaLev, Cleveland's Reconstructionist Jewish Community, also explores this topic.

Landmark Centre—Beachwood

Member of Lifelong Learning or Kol HaLev Price: free  
Nonmember Price: \$5  
Advance registration recommended

*Co-sponsored by Kol HaLev, Cleveland's Reconstructionist Jewish Community*

**THE IMPACT OF STATE BUDGET CUTS  
ON NORTHEAST OHIO COMMUNITIES**

Tuesday, March 21  
7–8:30 p.m.

Moderator: Brent Larkin, Columnist, cleveland.com

Panelists: Matt Dolan, Ohio Senator, 24<sup>th</sup> District (tentative); Sharon Dumas, Director of Finance, City of Cleveland; Timothy J. DeGeeter, Mayor, City of Parma

This lecture examines the impact of the recent state budget cuts on the communities in Northeast Ohio.

Cuyahoga County Library, Parma-Snow Branch

Member and Nonmember of Lifelong Learning Price: free  
Advance registration recommended

*Co-sponsored by the League of Women Voters of Greater Cleveland, Advance Ohio, Cuyahoga County Public Library, Lakewood Public Library, Cleveland Heights-University Heights Public Library, Solon Community Center, and corporate sponsor First Interstate Properties Ltd.*

★ Northeast Ohio Public Policy Series



**JEW, PHOTOGRAPHY AND MOVIE MAKING  
DURING WORLD WAR II**

Wednesday, March 22  
7 p.m.

Michael Berkowitz, Professor of Modern Jewish History, Department of Hebrew & Jewish Studies, Faculty of Arts & Humanities, University College, London

Jews in photography and film played a significant role in influencing how Americans perceived and understood the Axis powers and their opponents in the 1930s, including how the war was waged, the rationale for the United States entering the war, the Soviet Union as an ally and the commitment to a quasi-unified Europe. Based on research at Yad Vashem, the United States Holocaust Memorial Museum and the National Archives, this presentation will highlight the influence of David Scherman (photography), Anatole Litvak (directing), Leonard Spigelglass (screenwriting) and Leo Rosten (of *The Joys of Yiddish* fame).

Landmark Centre—Beachwood

Member of Lifelong Learning Price: free  
Nonmember Price: \$5  
Advance registration recommended



Are we still justifying violence in defense of purity of faith?  
And at what cost? **YOU, the jury** will decide!

**Kol HaLev**  
Cleveland's Reconstructionist Jewish Community presents

**THE PEOPLE vs.  
THE MACCABEES**

**Saturday, March 25, 7:30pm**

C | M | Law Moot Courtroom on the Cleveland State University Campus

*"Kol HaLev's  
theatrical mock  
trials are electric!"*

Learn more, meet the all-star cast, and get your tickets at [kolhalev.net/trial](http://kolhalev.net/trial)

Presented with support from The Leon & Gloria Plevin Fund; Cleveland-Marshall College of Law; The Laura and Alvin Siegal Lifelong Learning Program at CWRU

# SINGLE EVENTS & LECTURES

## THE ART OF PHILANTHROPIC GIVING

Thursday, April 6  
7–8:30 p.m.

Moderator: Brian Amkraut, Executive Director,  
Siegal Lifelong Learning, CWRU

Panelists: Barry Romich, Philanthropist; Robin Romich,  
Philanthropist; and other special guests

There is an art to philanthropy and a journey of self-discovery inherent in the process of arriving at the conscious decision to give back in a meaningful way to one's community. In this discussion, panelists will share their stories of philanthropy, how they arrived at the decision to give, what their legacy and vision were, how to choose organizations and the challenges philanthropists face when donating.

Landmark Centre—Beachwood

Member of Lifelong Learning Price: \$45

Nonmember Price: \$60

Refreshments are included.

Advance registration required

## IS THE CHILD FOSTER CARE SYSTEM IN NORTHEAST OHIO BROKEN?

Tuesday, April 18  
6:30–8:30 p.m.

Moderator: Phillip Morris, *The Plain Dealer*

Panelists: TBD

This panel will examine the issues faced by the foster care system in Northeast Ohio. Some argue that courts and aid workers are being overwhelmed by state funding cuts and issues such as the growing opioid epidemic. Our panel of experts in different areas of the field will discuss this and more.

Lakewood Public Library, Main

Member and Nonmember of Lifelong Learning Price: free  
Advance registration recommended

*Co-sponsored by the League of Women Voters of Greater Cleveland, Advance Ohio, Cuyahoga County Public Library, Lakewood Public Library, Cleveland Heights-University Heights Public Library, Solon Community Center, and corporate sponsor First Interstate Properties Ltd.*

★ Northeast Ohio Public Policy Series

## ACE BOOK DISCUSSION DAY—MOTHERING SUNDAY: A ROMANCE BY GRAHAM SWIFT

Monday, April 24  
9:30 a.m.–2 p.m.

Speaker: Jeanne Colleran, Provost and Academic Vice President, John Carroll University

Suburban Temple—Kol Ami

ACE Member Price: \$30

ACE Nonmember Price: \$40

Advance registration recommended

## RISING FROM THE RUBBLE: CREATING A MUSEUM OF THE HISTORY OF POLISH JEWS

Monday, April 24  
7 p.m.

Barbara Kirschenblatt-Gimblett, Chief Curator, POLIN Museum of the History of Polish Jews; Professor of Performance Studies, New York University's Tisch School of the Arts

Facing the *Monument to the Ghetto Heroes* on the site of the Warsaw ghetto and prewar Jewish neighborhood, POLIN Museum of the History of Polish Jews completes a memorial complex. The monument honors those who died by remembering how they died. And the museum honors them—and those who came before and after—by remembering how they lived. This illustrated lecture explores the creation of POLIN Museum's multimedia narrative exhibition, a journey of a thousand years, and its role as an agent of transformation that can move an entire society forward.

Landmark Centre—Beachwood

Member and nonmember of Lifelong Learning Price: free  
Advance registration recommended

*Made possible by a generous grant from the Salo W. and Jeannette M. Baron Foundation and with support from the Maltz Museum of Jewish Heritage*







THE LAURA & ALVIN SIEGAL  
LIFELONG LEARNING  
PROGRAM

Current and interesting topics  
Innovative and engaging programming  
Internationally renowned teachers and scholars

## BECOME A MEMBER OF SIEGAL LIFELONG LEARNING

*Enjoy the benefits of learning.*

### Your \$36 Membership Benefits:

- Discounted pricing on classes and events
- Priority registration
- Advance notice of programs
- Invitations to members-only special events
- Special behind-the-scenes tours
- Private meetings with high-profile, in-demand speakers
- Discounts at select community bookstores
- Discounted tickets to select Apollo's Fire concerts
- Free tote and magnet

**BECOME A MEMBER TODAY!**

[case.edu/lifelonglearning/about/membership-registration-policies/](https://case.edu/lifelonglearning/about/membership-registration-policies/)  
or call **216.368.2090**

# SINGLE EVENTS & LECTURES

## Ayelet Tsabari Lectures

### LANGUAGE, LONGING, AND BELONGING: AN EVENING WITH ISRAELI AUTHOR AYELET TSABARI

#### NILI ADLER MEMORIAL LECTURE

Tuesday, May 9  
7 p.m.

Ayelet Tsabari, Author

Ayelet Tsabari, author of the award-winning book, *The Best Place on Earth*, will speak about growing up as an ethnic minority (Mizrahi) in Israel, and about reclaiming her Yemeni identity through writing. She will share the unique challenges she has faced as an immigrant author in North America, writing about Israel in English, her second language.

Landmark Centre—Beachwood

Member of Lifelong Learning Price: free  
Nonmember Price: \$5  
Advance registration recommended

### NEW MIZRAHI VOICES: CHANGES IN ISRAELI LITERATURE

Wednesday, May 10  
10 a.m.

Ayelet Tsabari, Author

Israeli literature has long been dominated by Ashkenazi authors. Likewise, Israeli school curricula often dismiss the work of Mizrahi authors (those of non-European descent) from the canon. But today, a new generation of Mizrahi writers is determined to carve out space and perhaps even change the landscape of Israel's literary scene. Reflecting on her own work and those like her, Ayelet Tsabari will shed light on the changing face of Israeli literature and introduce some of the new Mizrahi voices that are making their mark.

Landmark Centre—Beachwood

Member of Lifelong Learning Price: free  
Nonmember Price: \$5  
Advance registration recommended

### MEET AYELET TSABARI: AN INFORMAL DISCUSSION IN HEBREW

Wednesday, May 10  
4–6 p.m.

Ayelet Tsabari, Author

An informal discussion for Cleveland's Hebrew speakers. Join author Ayelet Tsabari, who will speak about her work and life growing up Mizrahi in Israel and as an Israeli writer in North America. Registration required by May 3. Tea and pastries will be served.

Landmark Centre—Beachwood

Member and Nonmember of Lifelong Learning Price: \$5  
Advance registration recommended

### LIFE INTO ART: 10 TIPS FOR WRITING GREAT CREATIVE NONFICTION

Thursday, May 11  
10 a.m.

Ayelet Tsabari, Author

How do writers turn lived experience into literary art? What makes for a great true-life narrative? Do you have to live an extraordinary life to write nonfiction? To locate the stories in your life, apply fiction techniques to enhance your work and experiment with form, structure, tense and voice. Discussion and writing exercises will focus on finding your theme, identifying the conflict, confronting your fears and falling in love with revision. In this workshop, Ayelet Tsabari offers 10 practical tips to help you refine your prose, deepen your understanding of the genre and create stronger and more compelling nonfiction. Space is limited.

Landmark Centre—Beachwood

Member of Lifelong Learning Price: \$10  
Nonmember Price: \$15  
Advance registration recommended

*Ayelet Tsabari's visit is generously supported by the Herbert and Mariana Luxenberg Siegal College Lecture Fund of the Jewish Federation of Cleveland and the Israel Arts Connection of the Jewish Federation of Cleveland.*



Photo by Elsin Davidi

### Join Us To Learn More About AYELET TSABARI

#### LITERARY EXPLORATIONS OF MIZRAHI AND ASHKENAZI ISRAELI EXPERIENCES

Tuesdays, February 7–May 9  
10 a.m.–noon  
No class April 11 or 18

Judith Shamir, Hebrew Language Instructor

Participants in this course will read and discuss literature that highlights the different issues faced by Ashkenazi and Mizrahi immigrants and natives. Special attention will be paid to the work of Ayelet Tsabari, Israeli Yemenite award-winning author.

Landmark Centre—Beachwood

Member of Lifelong Learning Price: \$180  
Nonmember Price: \$200

## FRACKING AND THE IMPACT OF THE UTICA SHALE ON OHIO

Tuesday, May 16  
7–8:30 p.m.

Moderator: Dan Shingler, *Crain's Cleveland Business*

Panelists: TBD

This panel will discuss the impact of fracking on Ohio's economy and environment. What are some of the industry and employment opportunities that might arise out of this new technology in some of the poorest sections of our state? Can it be done without significantly polluting our water and air?

Solon Community Center

Member and Nonmember of Lifelong Learning Price: free  
Advance registration recommended

*Co-sponsored by the League of Women Voters of Greater Cleveland, Advance Ohio, Cuyahoga County Public Library, Lakewood Public Library, Cleveland Heights-University Heights Public Library, Solon Community Center, and corporate sponsor First Interstate Properties Ltd.*

★ Northeast Ohio Public Policy Series

## ACE CLEVELAND GEMS TOUR: TRINITY CATHEDRAL

Wednesday, May 17  
11:30 a.m.–2:30 p.m.

Martha Bifano, Tour Guide  
Wayne Bifano, Tour Guide

The cathedral celebrated its 200<sup>th</sup> anniversary November 6, 2016. The tour will involve the history of the cathedral; learning about the organ; viewing cathedral architecture; learning about current plumbing and electrical, which is providing a "green" environment; taking a walk on the connection to diocesan offices; and seeing and learning other important features of this grand old cathedral on what was once called Millionaires' Row.

Trinity Cathedral

ACE Member Price: \$25

ACE Nonmember Price: \$30

Prices include a brown-bag lunch, concert and tour  
Advance registration required



## LOOKING BACK AT THE SIX-DAY WAR: VICTORY AND LOSS

Wednesday, May 24  
7 p.m.

Benny Morris, Professor of History, Ben Gurion University

Nothing is as bad as a great defeat—except a great victory. The 1967 war established Israel as a regional power and led to the firming up of its alliance with the USA. But it also challenged the neighboring Arab states to regain their lost territories, leading to subsequent wars. Ultimately, Israel withdrew from the Sinai and peace with Egypt was attained. The war also left Israel in possession of the West Bank and Gaza Strip—and it has been unable to disgorge these territories ever since, auguring the emergence of a binational Jewish-Arab state, an anathema to most Zionists.

Landmark Centre—Beachwood

Member of Lifelong Learning Price: free  
Nonmember Price: \$5  
Advance registration recommended

## OUTSIDE, INSIDE: EXPLORING BOUNDARIES

Opening Reception for the Cleveland  
Jewish Arts and Culture Lab Exhibit

Tuesday, April 25 | 7–9 p.m.

Mandel Jewish Community Center

*Presented in partnership with the  
Mandel Jewish Community Center*

This exhibition represents the culmination of the fifth annual Cleveland Jewish Arts and Culture Fellowship. This year, talented artists from all segments of the local Jewish community met over the course of eight months to study, discuss and draw inspiration from the theme "Exploring Boundaries: Outside and Inside" using classical and contemporary Jewish sources. Opening remarks delivered by Alanna Cooper, Director of Jewish Lifelong Learning, CWRU.

Cleveland  
JEWISH ARTS & Culture Lab  
enabling the Arts to be a source of Jewish expression and inspiration est. 2012



For more information, contact the Jewish Arts  
and Culture Lab at [JACL@mandeljcc.org](mailto:JACL@mandeljcc.org).

# LECTURE SERIES

## Acclaimed Authors Luncheon Series

### ACCLAIMED AUTHORS LUNCHEON SERIES

Best-selling, notable award-winning authors discuss their current books and the writing process. Book sale and signing will be held after lectures.

Fridays, June 16, July 14, August 18  
11:30 a.m.–1:30 p.m.

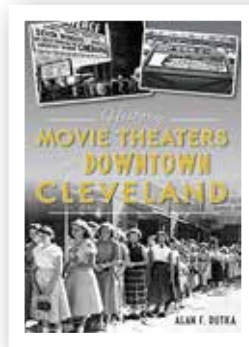
ACE Member Price: \$35 per lecture; \$95 for series of three  
Non-ACE Member Price: \$40 per lecture; \$110 for series of three  
Advance registration recommended  
Cleveland Skating Club

### MOVIE THEATERS OF DOWNTOWN CLEVELAND

June 16

Alan Dutka, Local Historian

Popular writer of several books, most recently *Movie Theaters of Downtown Cleveland*



### BEST OF ONE TANK TRIPS: GREAT GETAWAY IDEAS IN AND AROUND OHIO

July 14

Neil Zurcher, TV Travel Reporter

Discover the best and most unusual getaway ideas in and around Ohio!

### KINDERTRANSPORT: A RESCUED CHILD

August 18

Mimi Ormond, Author

Mimi Ormond's autobiographical book, *Kindertransport: A Rescued Child*, deals with her escape from the Nazis on the lifesaving trains.

**THE FRIENDS OF JEWISH LIFELONG LEARNING**, formerly Friends of the Aaron Garber Library, are pleased to announce our new identity as a part of the Siegal College Foundation. In this capacity, we continue our historic mission to support the Siegal Lifelong Learning Program at Case Western Reserve University.

To LEARN MORE about the Siegal College Foundation, call **216.368.2091**.

**CONVERSATIONS AT JUDSON PARK**

This lecture series is a unique monthly luncheon program open to the public. A variety of academic and contemporary issues are discussed. Led by local university faculty and laypeople, these forums provide participants with the opportunity to engage in meaningful conversations and ask questions of topic experts.

Thursdays, April 13, May 18, June 8, July 13  
noon–1:30 p.m.

Members of Lifelong Learning Price: \$25 per lecture

Nonmembers Price: \$30 per lecture

Prices include lunch

Advance registration required

Judson Park

Complimentary valet parking

**BEYOND SILICON VALLEY: HOW CLEVELAND’S SUPPORT OF ENTREPRENEURSHIP IS A GLOBAL MODEL**

April 13

Michael Goldberg, Assistant Professor of Design and Innovation, CWRU

How did Cleveland grow entrepreneurship through support from government, donors and the private sector? How did this become a global model and why?



**FROM OKLAHOMA TO HAMILTON: A SHORT HISTORY OF THE AMERICAN MUSICAL**

May 18

Don Rosenberg, President of the Music Critics Association of North America and Editor of EMag, the Magazine of Early Music America

The musical has roots in European opera and operettas, but became a distinctly American art form in the 20<sup>th</sup> century. Whether frivolous or provoking, musicals have entertained audiences and often touch on universal themes.

**50 YEARS LATER: THE COMPLICATED LEGACY OF JUNE 1967**

June 8

Brian Amkraut, Executive Director of Lifelong Learning, CWRU

In June 1967, Israelis and Jews around the world were first petrified of imminent destruction followed by euphoria over a tremendous military victory. Half a century later, those six days in 1967 still help shape the geopolitics of the Middle East. This brief analysis unpacks contemporary perspectives on the Six-Day War.



**THE REPUBLICAN REVOLUTION IN HEALTH CARE FINANCE?**

July 13

Joseph White, Luxenberg Family Professor of Public Policy, CWRU

Long before President Trump’s victory, congressional Republicans endorsed radical reforms to the government’s role in financing health care: repeal of the Affordable Care Act, block-granting Medicaid, and turning Medicare into a voucher program with all insurance provided by private insurance companies, instead of the government itself being the primary insurer for most beneficiaries. In this session, participants will discuss the achievements of, prospects for, and possible consequences of those changes as of the date of the discussion.



# LECTURE SERIES

## EASTSIDE CONVERSATIONS

Loosely fashioned after the popular City Club Forum, these sessions provide the community with a unique luncheon program once a month in which contemporary issues are discussed. Led by local university faculty and laypeople, this forum provides participants the opportunity to engage in meaningful questions and conversations. For more information on Eastside Conversations, contact Helga Miller, program coordinator, at 216.368.1284.

Wednesdays, January 18, February 15, March 15, April 19  
noon–1:30 p.m.

Landmark Centre—Beachwood

Member of Lifelong Learning Price: \$20 per lecture;  
\$72 for series of four  
Nonmember Price: \$25 per lecture; \$94 for series of four  
Prices include lunch  
Advance registration required

### WHAT DO PEOPLE THINK WHEN THEY THINK OF PHILLIP ROTH?

January 18

Sue Kisch, Lecturer in Lifelong Learning, CWRU

In his early writings, Roth chronicles post WWII American Jewry. This talk will discuss the changing Jewish self-image as depicted in the writings of this Pulitzer Prize-winning author. Participants may wish to refresh their memory by rereading some of his short stories.



### THE PURPOSE AND FUNCTIONS OF THE FEDERAL RESERVE

February 15

Mark Sniderman, Adjunct Professor of Economics, CWRU; former VP and Chief Policy Officer of the Federal Reserve Bank

This lecture will examine the origin of the Federal Reserve System, its structure, the role it plays in our economy today and some of the challenges the Federal Reserve faces.

### PRAISING THE VISUAL ARTS: THE ROLE OF AN ART AND ARCHITECTURE CRITIC

March 15

Steven Litt, Art, Architecture, Urban Design and City Planning Reporter, *The Plain Dealer*

This lecture will explore the criteria that a critic uses to evaluate everything from small regional gallery exhibits to large-scale museum shows, architectural design and regional planning.

### SUPERMAN'S JEWISH ORIGINS AND OTHER THOUGHTS ON JEWS AND COMICS

April 19

Samantha Baskind, Professor of Art History, Cleveland State University

This presentation discusses the large Jewish presence in comics created by Jews, as well as in graphic novels (Art Spiegelman's Pulitzer Prize-winning novel, *Maus*, among many others). It places the works in question in their social, political and religious context.



### MELISSA RAE FUND IN SUPPORT OF SUBSTANCE ABUSE: ADVOCACY, UNDERSTANDING AND CHANGE

Has substance abuse touched your life or the life of someone you know?

Support the Siegal Lifelong Learning Program's educational efforts to increase awareness and understanding of the epidemic that is impacting the community.



THE LAURA & ALVIN SIEGAL  
LIFELONG LEARNING  
PROGRAM

DONATE at [case.edu/lifelonglearning/about/giving](http://case.edu/lifelonglearning/about/giving)  
For more information, call 216.368.2091.

# ASSOCIATION FOR CONTINUING EDUCATION (ACE)

is a volunteer organization dedicated to providing and supporting continuing education programs in cooperation with the Siegal Lifelong Learning Program at Case Western Reserve University.

2017 SPRING ACE PROGRAMS

## ACE BOOK DISCUSSION DAY—*MOTHERING SUNDAY: A ROMANCE* BY GRAHAM SWIFT

Monday, April 24 | 9:30 a.m.–2 p.m.

Location: Suburban Temple – Kol Ami,  
22401 Chagrin Blvd., Beachwood

## ACE CLEVELAND GEMS TRIPS

### *University Hospitals Art Collection Tour*

Friday, February 3 | 11:15 a.m.–2:15 p.m.

Location: University Hospitals, Lerner Tower,  
11100 Euclid Ave., Cleveland

### *Trinity Cathedral History and Architectural Tour*

Wednesday, May 17 | 11:15 a.m.–2:15 p.m.

Location: Trinity Cathedral, 2230 Euclid Ave., Cleveland



ASSOCIATION  
*for* CONTINUING  
EDUCATION

AT CASE WESTERN RESERVE UNIVERSITY



THE LAURA & ALVIN SIEGAL  
LIFELONG LEARNING  
PROGRAM

ACE membership is open to anyone with an inquisitive mind!  
Current ACE membership fees can be found at [acesite.org](http://acesite.org). **JOIN TODAY!**

# LECTURE SERIES

## ELIE WIESEL'S LEGACY

Known for safeguarding the memory of those who survived the Holocaust and those who perished,



Elie Wiesel has been referred to as the "conscience of the world." His legacy lives on through the impact of his actions, his writings and his students. Join us in June to mark the first anniversary of his passing, as four of his students share their reflections on his life and work.

## THE MORAL IMPERATIVE OF REMEMBRANCE: THE ENDURING LEGACY OF ELIE WIESEL

Monday, June 12  
7 p.m.

Menachem Z. Rosensaft, General Counsel of the World Jewish Congress

Menachem Rosensaft, a friend, student, disciple and colleague of Elie Wiesel for over 55 years, will discuss the significance of the Nobel Peace Prize laureate's writings and teachings to our generation and those to come.

Landmark Centre—Beachwood

Member of Lifelong Learning Price: free  
Nonmember Price: \$5  
Advance registration recommended

## THE TRANSFER OF HOLOCAUST MEMORY

Tuesday, June 13  
noon–1:30 p.m.

Menachem Z. Rosensaft, General Counsel of the World Jewish Congress

Drawing on the experiences and reactions of a wide range of children and grandchildren of Holocaust survivors—including theologians, scholars, authors, artists, media personalities and community leaders—Menachem Rosensaft will speak about the ways that Holocaust memory is transmitted to future generations. And reflecting on his own experiences as the son of two survivors of Auschwitz and Bergen-Belsen, he explores how these memories can and must be perpetuated.

Landmark Centre—Beachwood

Member of Lifelong Learning Price: \$20  
Nonmember Price: \$25  
Prices include lunch  
Advance registration required

## MAMELOSHN IN THE ARCHIVES: READING ELIE WIESEL'S YIDDISH CORRESPONDENCE

Monday, June 19  
7 p.m.

David Schlitt, Director of the Rauh Jewish History Program and Archives at the Heinz History Center

What can we learn about Elie Wiesel from his letters sent and received in his "mother tongue"? How do language and medium shape the way we perceive, understand and remember him? In this lecture, David Schlitt, Director of the Rauh Jewish History Program & Archives at the Sen. John Heinz History Center, discusses his experience as the Yiddish-language archivist for Boston University's Elie Wiesel Archives, and the lessons he learned from the *kleyne pitshevkes*—the seeming minutiae of the collection.

Landmark Centre—Beachwood

Member of Lifelong Learning Price: free  
Nonmember Price: \$5  
Advance registration recommended

## LIFTING THE BROKEN HEARTS: ELIE WIESEL'S PASSIONATE ENGAGEMENT WITH BIBLICAL, RABBINIC AND HASIDIC MASTERS

Monday, June 26  
7 p.m.

Nehemia Polen, Professor of Jewish Thought, Hebrew College

Most widely known for his Holocaust writings, Elie Wiesel's engagement with Biblical, Rabbinic and Hasidic texts were also central to his life's work. Through study, teaching and writing, he dedicated himself to lifting up the classical Jewish tradition that was shattered in the wake of the Holocaust. Wiesel captured the central messages of these texts, repositioned them and made them widely accessible. Join Nehemia Polen, student of Elie Wiesel, who explores Wiesel's influences and his impact.

Landmark Centre—Beachwood

Member of Lifelong Learning Price: free  
Nonmember Price: \$5  
Advance registration recommended

Join Us To Learn More About ELIE WIESEL

## THE LEGACY OF ELIE WIESEL: HIS LIFE AND WORK

Thursdays, May 4–June 15  
1–3 p.m.

Reva Leizman, Lecturer in Lifelong Learning, CWRU  
(full listing on page 32)





# HELP US BRING DIVERSE, QUALITY EDUCATION TO NORTHEAST OHIO

## Support the Lifelong Learning Program's Annual Fund

Through your generous support, we can realize our mission of bringing diverse, quality educational opportunities to the Greater Cleveland area, providing community engagement and cultivating learning and personal growth.

With your annual gift, we can offer free or low-cost educational opportunities for the entire community, create innovative programming and attract world-class scholars and lecturers.

Give your gift today and take pride in supporting a cherished community resource.



THE LAURA & ALVIN SIEGAL  
LIFELONG LEARNING  
PROGRAM

For more information or to make a gift, call Brian Amkraut at 216.368.0423.

# LECTURE SERIES

## ORIGINS SCIENCE SCHOLARS PROGRAM – UNIVERSITY CIRCLE

The Origins Science Scholars Program is presented by the Siegal Lifelong Learning Program and the Institute for the Science of Origins (ISO), a partnership of Case Western Reserve University, the Cleveland Museum of Natural History and ideastream.

During this unique program, community members engage with one another and with leading scholars of the origins sciences to investigate rapidly developing areas of origins science. Each evening begins with a presentation by a world-class researcher, followed by complimentary dinner and open discussion among all the participants.

### Program Schedule

Tuesdays

April 18–May 30

5:30 p.m. –Coffee and Sign-In

6 p.m. –Lecture

7 p.m. –Dinner with OSS  
faculty and fellows

7:30 p.m. –Q&A and Dessert

### Program Costs

Member Price:

\$172 for series of seven;

\$40 per lecture

Nonmember Price:

\$195 for series of seven;

\$48 per lecture

Advance registration  
required

*Friends of the Institute  
for the Science of Origins  
are eligible for member  
rate for this program.*

## NEUTRINO WORLD

April 18

Glenn Starkman, Distinguished University Professor of Physics and Astronomy; Director, Institute for the Science of Origins, CWRU

Neutrinos may be oddest of all the fundamental particles of nature. Almost a century after their prediction, and 60 years after they were first detected (by a future chair of the CWRU physics department and his collaborators), we know that they come in three varieties (flavors) that change into one another as they travel through space, but we have yet to measure their masses or other important properties. Participants will learn what we do know about neutrinos and how we learned it, and highlight some of the most interesting remaining mysteries.

Cleveland Museum of Natural History



## ALIEN WORLDS AND THE ORIGIN OF SCIENCE

April 25

Paul Butler, Staff Scientist, The Carnegie Institution for Science

Over the past 20 years more than a thousand extrasolar planets have been found! Dr. Butler and his collaborators are building precise systems to survey the nearest stars and have found hundreds of planets, including five of the first six planets, the first Saturn-mass planet, the first Neptune-mass planet, the first terrestrial mass planet, and the first multiple planet system. In August 2016, they announced the discovery of a potentially habitable planet around the nearest star, Proxima Centauri. This discovery highlights the latest statistical evidence from Kepler and ground-based Doppler surveys that some 30 percent of stars have potentially habitable planets!

Tinkham Veale University Center, CWRU campus

## THE ELUSIVE NEUTRINOS: 60 YEARS OF MEASURING THE LEAST-INTERACTIVE PARTICLE

May 2

Ben Monreal, Associate Professor of Physics, CWRU

Neutrinos were first detected in 1956 coming out of a nuclear reactor at Savannah River, S.C., by Clyde Cowan and Fred Reines, soon thereafter chair of physics at Case Western Reserve University, who won the 1995 Nobel Prize for this discovery. Since then, it was discovered that there are three flavors of neutrino—electron, muon and tau. They have been detected coming from the sun, but only at half the rate expected and from a distant supernova, right here in Cleveland. We have learned that one flavor of neutrino can turn into another, a mixing phenomenon that strongly suggested very unexpectedly that they have mass. The mass has not yet been detected despite decades of trying, but a new technique may allow identification of the electron neutrino's mass by very carefully measuring the neutrinos produced in the decay of tritium, the heaviest isotope of hydrogen.

Tinkham Veale University Center, CWRU campus

## EXTREME EVOLUTION

May 9

Patricia Princehouse, Director, Program in Evolutionary Biology; Outreach Director, Institute for the Science of Origins

The polar seas are home to a stunning array of unusual animals with unique adaptations such as icefish, whose blood contains an antifreeze solution they make within their bodies. Weird organisms eke out an existence deep within hot springs. How do such quirks, oddities and anomalies evolve? How can the blind process of natural selection produce such successful adaptations?

Tinkham Veale University Center, CWRU campus



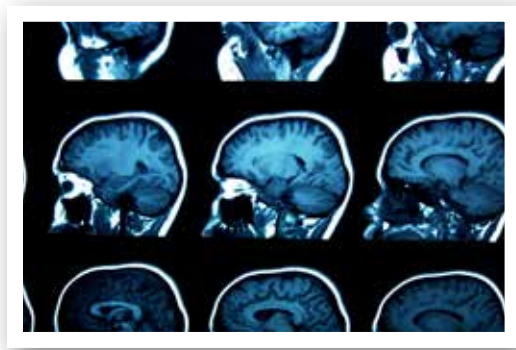
**ADVANCED MEDICAL IMAGING TECHNOLOGIES**

May 16

Peter Faulhaber, Professor of Radiology, CWRU; Director, Clinical PET University Hospitals

Where once there were just X-rays, now there is a wide range of imaging technologies applicable to different tissues and different diagnostic purposes. In this session we will learn the latest about computed tomography (CT), magnetic resonance imaging (MRI) and positron emission tomography (PET). There are even combined machines, such as PET/CT. What are they? How are they used, alone or in combinations in oncology, neurology and cardiology? What does the future hold for medical imaging?

Tinkham Veale University Center, CWRU campus



**USING HOLOGRAMS TO CHANGE HOW WE LOOK AT THE WORLD**

May 23

Mark Griswold, Director of the Interactive Commons and Professor of Radiology, CWRU

Virtual reality has become interactive! New technologies such as the Microsoft HoloLens are allowing us to augment our daily experience of the world with holograms that add education, design and entertainment to our lives and work.

Cleveland Museum of Natural History

**WHERE ARE THE MAGNETS IN MAGNETIC RESONANCE IMAGING (MRI)?**

May 30

Mike Martens, Professor of Physics, CWRU

The answer is both in the MRI machine and in your body! Learn about about the giant magnets in the MRI scanner, the tiny magnets in your body, and how they interact with each other to form the beautiful images we see today.

Cleveland Museum of Natural History



**TRIBE TALK: NEW JEWISH CONVERSATIONS**

Mondays, January 30, February 27, March 27, May 22 7–8 p.m.

Moderators: Brian Amkraut, Executive Director, Siegal Lifelong Learning, CWRU; Alanna Cooper, Director of Jewish Lifelong Learning, CWRU

Tribe Talk is an edgy, provocative and engaging monthly conversation on trending Jewish news, led by Brian Amkraut and Alanna Cooper, our resident Jewish news junkies.

Landmark Centre—Beachwood

Member of Lifelong Learning Price: free

Nonmember Price: \$20 for series

Advance registration recommended

*Co-sponsored by the Cleveland Jewish News and the Cleveland Jewish News Foundation*



# COURSES

## Art and Music

### ITALIAN MANNERISM AND BAROQUE ART

Saturdays, February 4–March 4  
10:30 a.m.–noon  
No class on February 18

Karen Edwards, Art History Teacher

In this course, we will explore the transition from Mannerism to Baroque art through in-depth analysis and discussion of the art of Giorgio Vasari, Cellini, Bernini, Caravaggio and Artemisia Gentileschi. This course will also examine the social, political and religious environment that shaped the artistic production of the period. No textbook is necessary; articles and websites will be provided.

Laurel School—Lyman Campus

Member of Lifelong Learning Price: \$90  
Nonmember Price: \$110

### CMA GALLERY LECTURE SERIES

Session I: Tuesdays, February 7–March 14  
Session I: Thursdays, February 9–March 16  
1–2 p.m.

Staff, Cleveland Museum of Art

In 2017, the Cleveland Museum of Art commences its second century with magnificent galleries and public spaces, and a collection that remains, object for object, one of the finest in the world. This engaging gallery lecture series taught by instructors from the museum's Department of Education and Academic Affairs highlights the evolving presentation of the permanent collection as well as special exhibitions and new acquisitions. Please join us as we continue to explore our distinguished art museum, one of northeastern Ohio's principal civic and cultural institutions. Enrollment is limited to 28 per session.

Cleveland Museum of Art

Member of Lifelong Learning Price: \$75  
Nonmember Price: \$90



### EXPLORING SCULPTURAL FORM

Saturdays, February 25–March 11  
10 a.m.–noon

Catherine Butler, Art Teacher

Enjoy the playful, meditative process of developing three-dimensional form. Learn techniques to develop forms with wire, newspaper, wood and found objects. These pieces will be enveloped and embellished with plaster cloth. Each student will be guided to follow his or her own interests and inspiration while developing his or her personal expression.

Materials fee: \$10, to be paid to the instructor on the first day of class.

Laurel School—Lyman Campus

Member of Lifelong Learning Price: \$90  
Nonmember Price: \$110

### THE JEWISH IMAGE IN AMERICAN CINEMA: FILMS AND CONVERSATIONS

Mondays, February 27–April 3  
1–3:30 p.m.

Brian Amkraut, Executive Director, Siegal Lifelong Learning, CWRU; Eric Kisch, Host, *Musical Passions* Program, 104.9 WCLV FM

This course addresses the changing image of America's Jews as portrayed in motion pictures. Did Hollywood reinforce existing stereotypes or create a new vision of the Jew in America? How do films such as *The Jazz Singer*, *Gentleman's Agreement* and *Annie Hall* reflect the ideas and sensibilities of the major Jewish players in the film industry?

Landmark Centre—Beachwood

Member of Lifelong Learning Price: \$110  
Nonmember Price: \$130

### FIBERS AT THE FARM: SILK PAINTING FOR EVERYONE

Tuesdays, May 9–30  
1–4 p.m.

Peggy Wertheim, Surface Design Artist

Discover, create and explore the exciting techniques of batik and silk painting inspired by the natural beauty of Squire Valleevue Farm. Students will learn resist application, waxing, color blending, dye theory, paint and salt techniques. They will create several pieces of silk wall art to frame and/or silk scarves. A wealth of design ideas, reference books and handouts provided. No experience necessary. Limited enrollment. A \$35 material fee is payable to the instructor the first day of class.

Squire Valleevue and Valley Ridge Farms, The Honey House

Member of Lifelong Learning Price: \$80  
Nonmember Price: \$100



### PAINTING IN THE OUTDOORS

Fridays, June 2–30  
10 a.m.–2 p.m.

Patricia Sigmier, Local Artist

In this course we will explore painting in the outdoors using watercolor or the medium of your choice. Subjects will be found in the beautiful environs of Squire Valleevue and Valley Ridge Farms. Students of all skill levels, including beginners, are welcome. Each student will be instructed individually and work at his/her own pace. Bring a bag lunch.

Squire Valleevue and Valley Ridge Farms

Member of Lifelong Learning Price: \$200  
Nonmember Price: \$220

## History and Culture

### THE EUROPEAN UNION: HISTORY, STRUCTURE AND FUTURE

Tuesdays, January 31–April 25  
1:30–3:30 p.m.

No class March 7 and 14

Kenneth Ledford, Associate Professor of History and Law, CWRU

At the end of World War II, western European political leaders embarked upon a project of European integration as an economic and political project to maintain European independence between the superpowers of the United States and the Soviet Union and a neo-liberal economic project to spur economic growth to maintain the welfare state. This course will explore the origins and evolution of the European Union, its structure and functioning including limits to its powers, and forecast its future in the face of its manifold challenges.

The College Club of Cleveland

Member of Lifelong Learning Price: \$115  
Nonmember Price: \$135

★ Senior Scholars

### THE WARREN COURT

Wednesdays, February 1–March 8  
1:30–3:30 p.m.

Barbara Greenberg, Attorney and Magistrate

The years 1953 to 1969 were a most unique time in the U.S. Supreme Court's history. In 1953, President Eisenhower nominated California Gov. Earl Warren as the new chief justice. The 18 men seated with him over the next 16 years would review, interpret and decide the cases before them in the most far-reaching decisions possible. This class will look at the men on this court during this period and will focus on the landmark decisions during these many years.

The College Club of Cleveland

Member of Lifelong Learning Price: \$115  
Nonmember Price: \$135

★ Senior Scholars

# COURSES

## ANTISEMITISM: A BRIEF HISTORY

Tuesdays, March 14–April 4  
7–9 p.m.

Brian Amkraut, Executive Director of Lifelong Learning, CWRU

This course begins with an examination of the origins of what has been called “the oldest hatred,” and moves through history, to conclude with the challenges confronting Jews today. Along the way, we examine the shifting paradigms of antisemitic expression including: xenophobia, religious conflict, “scientific” racism, as well as the current forms prevalent in America and around the world.

Landmark Centre—Beachwood

Member of Lifelong Learning Price: \$60  
Nonmember Price: \$75



## EMINENT VICTORIANS

Mondays, March 20–May 8  
1–2:30 p.m.

Enid Kirtz, Leader-Teacher, Off-Campus Studies

This book discussion course will examine Victorian England featuring the Queen and the attitudes toward education, church, army (Florence Nightingale) and Gen. Gordon. These issues still resonate in society today. Let’s explore these serious topics with a humorous approach. Books: L. Strachey, *Eminent Victorians*; *Queen Victoria*

Rocky River Public Library

Member of Lifelong Learning Price: \$82  
Nonmember Price: \$97

## 1421: THE YEAR THE CHINESE DISCOVERED AMERICA

Mondays, March 20–May 8  
10–11:30 a.m.

Jim Van Horn, Leader-Teacher, Off-Campus Studies

This book discussion course will examine *1421: The Year the Chinese Discovered America*. On March 8, 1421, the largest fleet the world had ever seen sailed from its base in China. The ships were under the command of Emperor Zhu Di’s loyal eunuch admirals and their mission was “to proceed all the way to the end of the earth to collect tribute from the barbarians beyond the seas.” Their journey would last more than two years and circle the globe. Book: G. Menzies, *1421: The Year the Chinese Discovered America*

Church of the Redeemer

Member of Lifelong Learning Price: \$82  
Nonmember Price: \$97

## DAUGHTERS, FAMILIES, CLEVELAND: TWO PERSPECTIVES

Tuesdays, March 21–May 9  
1–2:30 p.m.

Marian Morton, Leader-Teacher, Off-Campus Studies

This book discussion course looks at the daughters of two Cleveland families. One family was socially prominent, a pillar of Cleveland Protestantism, residents of Cleveland’s Millionaires’ Row in the late 19<sup>th</sup> century; the other was solidly middle-class, Jewish, and suburban, a century later. How did these daughters’ lives compare? What does each book reveal about Cleveland? Books: G. Haddad, *Flora Stone Mather: Daughter of Cleveland’s Euclid Avenue and Ohio’s Western Reserve*; A. Kates Shulman, *A Good Enough Daughter: A Memoir*

Judson Manor

Member of Lifelong Learning Price: \$82  
Nonmember Price: \$97

## THE SUMMER OF 1927: AMERICA BETWEEN WWI AND THE DEPRESSION

Thursdays, March 23–May 11  
10–11:30 a.m.

Jim Van Horn, Leader-Teacher, Off-Campus Studies

In this book discussion course, students will talk about how Bill Bryson revisits a unique era in American history, the 20<sup>s</sup>, sandwiched in between World War I and the Depression. He writes about familiar personalities and events—Charles Lindbergh, Babe Ruth, Al Capone, Herbert Hoover—and some not so well-known people and captures the magic of a special time. Book: B. Bryson, *One Summer: America 1927*

Landmark Centre—Beachwood

Member of Lifelong Learning Price: \$82  
Nonmember Price: \$97

# FLORA STONE MATHER CENTER FOR WOMEN

Providing resources and educational programming to enrich the academic, professional and personal lives of all women, promoting their success and well-being



## SIGNATURE PROGRAMS

- ACT III Roundtable: A Drop-in Discussion Group
- Mather Spotlight Series and Women of Achievement Luncheon
- Mather Salon Series
- MOMS (Moms Offering Moms Support)
- Women's History Month
- Women of Color Series
- Women's Health and Wellbeing



To REGISTER or LEARN MORE, visit our website at: [case.edu/centerforwomen/programs/](http://case.edu/centerforwomen/programs/)

### NICHOLAS AND ALEXANDRA

Thursdays, March 23–May 11  
10–11:30 a.m.

Betty Zak, Leader-Teacher, Off-Campus Studies

Nicholas and Alexandra have been called saints, innocent victims and harbingers of revolution, among many other names. In this book discussion course, students will debate what really happened. Was it a love that extended beyond each other? Was it a love that ended an empire? Discover their passion, their strengths and their weaknesses in a new light. Readings include summaries of newly released Russian documents involving Rasputin, Alix and Nicky and Alexandra's lady-in-waiting. Books: R. Alexander, *The Kitchen Boy: A Novel of the Last Tsar*; R. Massie, *Nicholas and Alexandra*

Westlake United Methodist Church

Member of Lifelong Learning Price: \$82  
Nonmember Price: \$97

### FRANCES PERKINS: THE WOMAN BEHIND THE NEW DEAL

Fridays, March 24–May 12  
10–11:30 a.m.

Pamela Belknap, Leader-Teacher, Off-Campus Studies

As a young social worker, Frances Perkins witnessed the traumatic Triangle Shirtwaist fire of 1911, which killed 146 workers. She immediately became an activist, as well as a lifelong advocate for critical reforms and programs. In this book discussion course, students learn how Labor Secretary Perkins teamed with FDR to create the New Deal legislation, which continues today. Books: K. Downey, *The Woman Behind the New Deal—The Life and Legacy of Frances Perkins—Social Security, Unemployment Insurance, and the Minimum Wage*; F. Perkins, *The Roosevelt I Knew* (Penguin Classics)

St. Paul's Episcopal Church

Member of Lifelong Learning Price: \$82  
Nonmember Price: \$97



# Educational Travel Program

## CWRU World Travelers Join Us for

### GOURMET GASTRONOMY OF BURGUNDY AND ALSACE, FRANCE

June 2018

Travelers take a gourmet tour of Burgundy and Alsace with experts. This exploration will compare and contrast the two regions' foods, wines, and historic sites.

**Trip Leaders:** Alan Rocke, Distinguished University Professor Emeritus and Henry Eldridge Bourne Professor Emeritus of History, CWRU and Annie Pecastaings Lecturer, Department of English, CWRU



### ORIGINS UNLIMITED: CRUISE TO THE BRITISH ISLES, NORWAY AND ICELAND

AUGUST 6–20, 2017

Sail from Amsterdam to Edinburgh and Invergordon, Scotland where you can sample the refinement and ruggedness of Edinburgh and the atmospheric beauty of the Scottish Highlands. Then, take in the spectacular waterfalls and geothermal delights in Reykjavík and Ísafjörður, Iceland before cruising through the breathtaking fjords along the coast of Norway.

**Trip Leaders:** Glenn Starkman, Distinguished University Professor of Physics and Astronomy; Director, Institute for the Science of Origins and Patricia Princehouse, Director, Program in Evolutionary Biology; Outreach Director Institute for the Science of Origins



# THE WORLD IS YOUR CLASSROOM

- Visit international destinations with faculty experts sharing their in-depth knowledge and love of learning
- Gain access to behind-the-scenes sites, cultural treasures and educational activities
- Travel with small groups of Case Western Reserve alumni and friends
- Start your journey from any place in the world

## ICELAND—NORTHERN LIGHTS AND REYKJAVIK

Trip One: JANUARY 19–23, 2018

or

Trip Two: JANUARY 26–30, 2018

Escape to exotic Iceland. From steamy hot springs to world-class spas, magnificent malls to art museums, this unique land is the perfect place to relax, recharge, and explore. Travelers will explore the culture of Reykjavik, the Great Geysir, glaciers, magnificent waterfalls and icecaps. The combination of remarkable natural features with art museums, theaters, an opera house, and a symphony orchestra offers a rejuvenating experience for all tastes and interests.

**Trip Leader:** Glenn Starkman, Distinguished University Professor of Physics and Astronomy; Director, Institute for the Science of Origins; Director, Center for Educational Research in Cosmology and Astrophysics

### Optional G.o.T. Extension

(faculty not included in extension)

JANUARY 23–26, 2018

Join tour guide, Svanur Thorkelsson, an extra on the set of *Game of Thrones* and native Icelander, as you visit sites familiar to program viewers and delve a little deeper into the cinematic wonders of the land.

Exciting upcoming destinations include:  
INDIA, MONGOLIA, POLAND,  
ISRAEL, JAPAN, CHINA, JAMAICA  
AND CURAÇAO AND MORE!

For a COMPLETE LISTING or to REGISTER visit  
[case.edu/lifelonglearning/travel](http://case.edu/lifelonglearning/travel) or call Michelle Miller at 216.368.8745.



# COURSES

## HORTICULTURE AND NATURE

### CULINARY HERB BASICS

Session I: Saturday, April 1  
Session II: Saturday, May 6  
10 a.m.–noon

Sharon Halkovics, Farm Food Program Coordinator, CWRU

Culinary herbs are easy to grow and make food taste terrific. In this class, students will learn techniques for growing annual and perennial herbs, how to store and preserve herbs for future use and share a variety of ways to use them in cooking.

Squire Valleevue and Valley Ridge Farms,  
Green Barn Classroom

Member of Lifelong Learning Price: \$25  
Nonmember Price: \$35

### BIRDS AND BREAKFAST

Fridays, May 5–June 9  
6:30–8:30 a.m.

Timothy Matson, Curator and Head of Vertebrate Zoology,  
Cleveland Museum of Natural History

Explore the bluebird trail, watch busy bobolinks, or be rewarded with a rare sighting of Henslow's Sparrow. May and June are busy months for birds. Migrants arrive and some continue their journeys northward. Others, along with permanent residents, establish and actively defend their territories and carry out reproductive activities. Optional breakfast 8:30–9 a.m.

Squire Valleevue and Valley Ridge Farms,  
Greenhouse Parking Lot

Member of Lifelong Learning Price: \$85  
Nonmember Price: \$95

### WALKING THROUGH NATURE

Wednesdays, June 7–21  
10 a.m.–noon

Jay Abercrombie, Field Biologist, formerly with the  
Geauga Park District

This field seminar provides a close look at the plants, wildlife and geology of Squire Valleevue Farm. On field trips into the forest and meadows, observe and discuss habitats and their inhabitants as they transition to fall and prepare for winter. No strenuous hiking will be involved, but participants should be able to maintain an active pace over generally moderate, but occasionally hilly or wet terrain.

Squire Valleevue and Valley Ridge Farms,  
Greenhouse Parking Lot

Member of Lifelong Learning Price: \$45  
Nonmember Price: \$55



## 2017 ACE Annual Book Sale



The 2017 Book Sale will be held on the following days:

Saturday, June 3	10 a.m.– noon noon–5 p.m.	Preview (\$20 fee) Free admission
Sunday, June 4	noon–5 p.m.	Coupon Day (\$5 off \$15 or more)
Monday, June 5	noon–5 p.m.	Reduced Pricing
Tuesday, June 6	10 a.m. –1 p.m.	Box Sale \$5

**LOCATION:** Adelbert Gym, Case Western Reserve University campus



ASSOCIATION for CONTINUING EDUCATION

**FOR MORE INFORMATION:** visit our website at [acesite.org](http://acesite.org).



# IT'S NEVER TOO LATE TO LEARN!

## COURSE AUDIT PROGRAM FOR SENIOR CITIZENS

*Did you ever wish you had  
taken that philosophy class  
in college?*

*What about your desire  
to study literature and  
creative writing?*

The Course Audit Program for Senior Citizens (CAPSC) offers students, ages 65 and older, the opportunity to take courses on the Case Western Reserve campus at a reduced tuition rate (\$40 per credit hour). Subject areas include: English, literature, foreign languages, music, art, performing arts, history, political science, religion, philosophy, astronomy and many more!



LEARN MORE about the CAPSC program or REGISTER NOW at [case.edu/lifelonglearning/capsc/](https://case.edu/lifelonglearning/capsc/) or call **216.368.2090**.

# COURSES

## Jewish Studies

### RABBI JOSEPH B. SOLOVEITCHIK: INSIGHTS TO THE WEEKLY TORAH PORTION AND THE SPRING HOLIDAYS

Session I: Mondays, February 6–March 13

Session II: Mondays, March 20–May 22

No class on April 10, 17, 24 or May 1

6:30–8:30 p.m.

Moshe Berger, Lecturer in Religious Studies, CWRU

Although primarily a teacher of Talmud to advanced rabbinical students, Rabbi Joseph Soloveitchik was also an inspiring popularizer, whose discussions of the weekly Torah portion and the holidays left audiences spellbound. In this class we shall read and analyze transcripts (in English) of these compelling presentations.

Landmark Centre—Beachwood

Member of Lifelong Learning Price: \$90 per session

Nonmember Price: \$110 per session

### HOLOCAUST SURVIVORS' TESTIMONIES AND REFLECTIONS

Tuesdays, February 7–March 14

1–3 p.m.

Leatrice Rabinsky, Lecturer in Lifelong Learning, CWRU

Learn of the faith, love and despair of the Jewish youth and minorities facing Nazi deceit and savagery.

Landmark Centre—Beachwood

Member of Lifelong Learning Price: \$90

Nonmember Price: \$110

### ENGAGE THE TALMUD: BEGIN OR CONTINUE YOUR STUDIES

Session I: Thursdays, February 9–March 16

Session II: Thursdays, March 23–May 4

No class on April 13

10 a.m.–noon

Moshe Berger, Lecturer in Religious Studies, CWRU

The Talmud is a composite of Jewish law and lore written over the course of almost 700 years. Since its codification (around the year 500), it has shaped Judaism as we know it today. This course introduces the uninitiated to the Talmud's rich world. For those with some familiarity, the course will increase your understanding and comfort with the text. English versions will be available.

Landmark Centre—Beachwood

Member of Lifelong Learning Price: \$90 per session

Nonmember Price: \$110 per session

*Each session covers new material. Register for one or both.*

### BURDENS AND CHALLENGES: DESCENDANTS OF HOLOCAUST SURVIVORS AND PERPETRATORS

Thursdays, February 9–March 16

1–3 p.m.

Donna Rumenik, Lecturer in Lifelong Learning, CWRU

How does an individual form and affirm his or her own identity, when he or she is the descendant of Holocaust survivors or perpetrators? Often for each group there has been silence and denial regarding the experiences of parents and grandparents. What is the impact and meaning of this legacy? What if your name connects you to images of murder and genocide? How does the truth of the past become known? Through essays, poems, films and interview narratives these questions will be addressed. In addition, we will examine dialogues that have been held between descendants of Holocaust survivors and perpetrators.

Landmark Centre—Beachwood

Member of Lifelong Learning Price: \$90

Nonmember Price: \$110

### JEWISH HISTORY: LIVING UNDER ISLAM AND CHRISTENDOM



Thursdays, February 9–March 2

6:30–8 p.m.

Brian Amkraut, Executive Director, Siegal Lifelong Learning, CWRU

No longer a sovereign nation in their own land, the Jews saw dramatic changes in the Middle Ages as they scattered across the globe through migration, trade and expulsions. This course offers an overview of Jewish life during this era, focusing on the ways Jews preserved their religion, while also responding creatively to living in the realms of Christendom and Islam.

Landmark Centre—Beachwood

Member of Lifelong Learning Price: \$60

Nonmember Price: \$75



**MARKING THE JEWISH CALENDAR:  
DANCING, FEASTING, KINDLING AND  
OTHER JEWISH TRADITIONS**



Thursdays, March 9–30  
6:30–8 p.m.

Alanna Cooper, Director of Jewish Lifelong Learning, CWRU

This course provides a concise but comprehensive look at the traditions that mark the Jewish calendar. It offers an overview of all major Jewish holidays, their meaning, how they developed and the variety of ways they are celebrated today.

Landmark Centre—Beachwood

Member of Lifelong Learning Price: \$60  
Nonmember Price: \$75



**RESISTANCE AND RESILIENCE: SURVIVORS REFLECT  
ON THEIR DEFIANCE OF THE NAZIS**

Tuesdays, March 21–May 9  
1–3 p.m.

No class April 11 or 18

Leatrice Rabinsky, Lecturer in Lifelong Learning, CWRU

In the forests, ghettos and concentration camps, pockets of rebels resisted the Nazis by stealing uniforms and arms. Victims built secret tunnels, arranged aid from the outside and served to encourage the weak.

Landmark Centre—Beachwood

Member of Lifelong Learning Price: \$90  
Nonmember Price: \$110

**TRAVELS TO THE EDGE OF THE JEWISH WORLD:  
CENTRAL ASIA'S BUKHARAN JEWS**

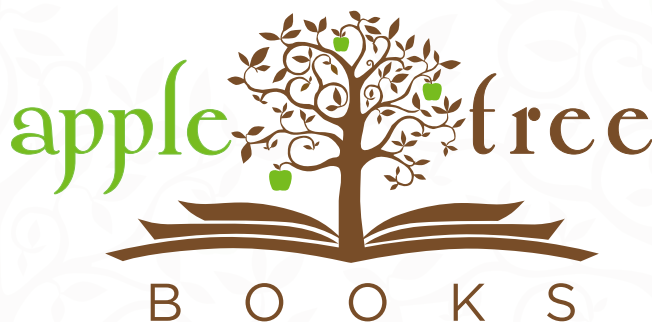
Fridays, April 28–May 19  
10–11:30 a.m.

Alanna Cooper, Director of Jewish Lifelong Learning, CWRU

Shortly after the Soviet Union dissolved, cultural anthropologist Alanna Cooper traveled to Uzbekistan to learn about the Jewish community that had been living there for over a millennium. There, in the heart of Central Asia, she recorded stories about life on the margins of the Jewish world, about living as a minority among a predominantly Muslim population and about remaining Jewish through the Soviet period. After that first visit, Alanna was hooked and spent the next 15 years researching and writing as she traveled in Uzbekistan, among immigrant communities in New York and Tel Aviv and to library archives. Join her for a fascinating perspective on Jewish history and culture.

Landmark Centre—Beachwood

Member of Lifelong Learning Price: \$60  
Nonmember Price: \$75



12419 CEDAR AT FAIRMOUNT • CLEVELAND HTS., OH 44106

INFO@APPLETREE-BOOKS.COM • PHONE: 216.791.2665 • WEB: WWW.APPLETREE-BOOKS.COM

**STORE HOURS: Tuesday - Thursday: 10 - 6 • Friday: 10 - 8 • Saturday: 10 - 6 • Closed Sunday - Monday**

# COURSES

## Language: Hebrew

### CONVERSATIONAL HEBREW

Courses allow students to reach the goal of communicating in Israel's native language, as well as enjoy Hebrew literature, songs, drama, films, newspapers and Israeli television.

### BEGINNER CLASSICAL HEBREW

Mondays, February 6–May 22

6:30–8:30 p.m.

No class April 10, 17, 24 or May 1

Dahna Baskin, Hebrew Language Instructor

Materials Needed: binder/folder and Chumash Beresheit/  
Book of Genesis in the original Hebrew

Landmark Centre—Beachwood

Member of Lifelong Learning Price: \$180

Nonmember Price: \$200

### ADVANCED BEGINNER CONVERSATIONAL HEBREW

Mondays, February 6–May 22

6:30–8:30 p.m.

No class April 10, 17, 24 or May 1

Leah Cooper, Hebrew Language Instructor

Landmark Centre—Beachwood

Member of Lifelong Learning Price: \$180

Nonmember Price: \$200

### INTERMEDIATE CONVERSATIONAL HEBREW

Mondays, February 6–May 22

6:30–8:30 p.m.

No class April 10, 17, 24 or May 1

Rivka Taub, Hebrew Language Instructor

Landmark Centre—Beachwood

Member of Lifelong Learning Price: \$180

Nonmember Price: \$200

### INTERMEDIATE CONVERSATIONAL HEBREW

Tuesdays, February 7–May 9

6:30–8:30 p.m.

No class April 11, 18

Leah Cooper, Hebrew Language Instructor

Landmark Centre—Beachwood

Member of Lifelong Learning Price: \$180

Nonmember Price: \$200

### INTERMEDIATE CONVERSATIONAL HEBREW

Wednesdays, February 8–May 3

1–3 p.m.

No class April 12

Sonia Yungster, Hebrew Language Instructor

Landmark Centre—Beachwood

Member of Lifelong Learning Price: \$180

Nonmember Price: \$200

### INTERMEDIATE CONVERSATIONAL HEBREW

Wednesdays, February 8–May 3

6:30–8:30 p.m.

No class April 12

Judith Shamir, Hebrew Language Instructor

Landmark Centre—Beachwood

Member of Lifelong Learning Price: \$180

Nonmember Price: \$200

### ADVANCED CONVERSATIONAL HEBREW

Tuesdays, February 7–May 9

10 a.m.–noon

No class April 11, 18

Rivka Taub, Hebrew Language Instructor

Landmark Centre—Beachwood

Member of Lifelong Learning Price: \$180

Nonmember Price: \$200

### ADVANCED CONVERSATIONAL HEBREW

Thursdays, February 9–May 4

10 a.m.–noon

No class April 13

Judith Shamir, Hebrew Language Instructor

Landmark Centre—Beachwood

Member of Lifelong Learning Price: \$180

Nonmember Price: \$200



## HEBREW LITERATURE

Hebrew literature engages advanced students in fictional novels and plays by leading Israeli authors and playwrights.

### ADVANCED HEBREW LITERATURE

#### LITERARY EXPLORATIONS OF MIZRAHI AND ASHKENAZI ISRAELI EXPERIENCES

Tuesdays, February 7–May 9

10 a.m.–noon

No class April 11 or 18

Judith Shamir, Hebrew Language Instructor

Participants in this course will read and discuss literature that highlights the different issues faced by Ashkenazi and Mizrahi immigrants and natives. Special attention will be paid to the work of Ayelet Tsabari, Israeli Yemenite award-winning author.

Landmark Centre—Beachwood

Member of Lifelong Learning Price: \$180

Nonmember Price: \$200



When you came to an evening lecture,  
we knew you were **INTRIGUED**.

When you attended an event at the museum,  
we knew you were **INTERESTED**.

When you signed up for a six-week course,  
we knew you were **COMMITTED**.

Now, it's time to  
**SHOW** your support  
for lifelong learning.



THE LAURA & ALVIN SIEGAL  
LIFELONG LEARNING  
PROGRAM

Whether it's supporting a lifelong learning program, class, lecture or specific naming opportunities, your gift enables us to continue to offer high quality accessible adult education.

For more information, call Brian Amkraut at 216.368.0423.

# COURSES

## Literature

### THE GAME'S AFOOT AGAIN: RE-IMAGININGS OF SHERLOCK HOLMES

Thursdays, February 2–March 2  
1:30–3:30 p.m.

JoAnne Podis, Emerita Professor of English,  
Ursuline College

This course will explore reasons for the ongoing popularity of Sherlock Holmes, Arthur Conan Doyle's most famous creation, and will examine film adaptations through the decades. Discussions will center on how the adaptations faithfully reproduce, or creatively reinterpret, their source materials. The original stories featured in the film adaptations are as follows: *The Hound of the Baskervilles*, *The Red-Headed League*, *A Scandal in Bohemia* and *The Final Problem*.

The College Club of Cleveland

Member of Lifelong Learning Price: \$115  
Nonmember Price: \$135

★ Senior Scholars

### THE PAST: A NOVEL ABOUT FAMILY AND INHERITANCE

Wednesdays, March 8–29  
10–11:30 a.m.

Sylvia Abrams, Retired Dean, Siegal College  
of Judaic Studies

British author Tessa Hadley has created a masterful family drama in *The Past*. Four middle-aged siblings reunite at their ancestral home in the English countryside in this domestic portrait of a three-week summer holiday. Hadley expertly captures the gentle tragedies of living, losses and regrets in this fresh take on a family reunion. "Hadley is the patron saint of ordinary lives; her trademark empathy and sharp insight are out in force here." (Kirkus Review)

Cuyahoga County Public Library, Mayfield Branch

Member and Nonmember of Lifelong Learning Price: free  
Advance registration recommended

Literature

## THE 2016-17 WILLIAM N. SKIRBALL WRITERS CENTER STAGE SERIES



**COLUM McCANN & EDNA O'BRIEN**  
Tuesday, March 21, 2017



**ALISON BECHDEL**  
Thursday, April 20, 2017



**JOHN GREEN**  
Wednesday, May 3, 2017

[www.writerscenterstage.org](http://www.writerscenterstage.org)



Cuyahoga County  
Public Library  
Foundation



CASE WESTERN RESERVE  
UNIVERSITY EST. 1826  
think beyond the possible



## NATIVE AMERICAN LITERATURE

Thursdays, March 9–April 20

1:30–3:30 p.m.

No class March 16

Jeff Karem, Professor of English, Cleveland State University

This course provides a sampling of the wide spectrum of Native American literature from the 19<sup>th</sup> and 20<sup>th</sup> centuries. Our study will be geographically diverse, encompassing texts by Native Americans from the Southeast, Midwest, Southwest and Northwest. A key goal of this course is considering the diverse and evolving shape of Native American literature, particularly how these texts have addressed Native encounters with the U.S. government, the changing state of nature on the continent, the challenges of the reservation system and the tensions between tradition and innovation in modern Native American life.

The College Club of Cleveland

Member of Lifelong Learning Price: \$115

Nonmember Price: \$135

★ Senior Scholars

---

## WRITERS OF THE HARLEM RENAISSANCE

Sundays, March 19–May 7

5–6:30 p.m.

Nancy Fleming, Leader-Teacher, Off-Campus Studies

The Harlem Renaissance was a period between 1917 and 1933 when Harlem became a center for black literature, music and art. Writers addressed diverse issues such as the importance of a black intelligentsia, radicalism, identity, interactions between blacks and whites, biracialism and whether to embrace folk tradition. These issues will be explored in the selected readings. Book: D. Levering Lewis, Editor, Penguin Books *The Portable Harlem Renaissance Reader*

Private Residence, 13803 Cormere Ave., Cleveland

Member of Lifelong Learning Price: \$82

Nonmember Price: \$97

---

## ANNE TYLER: TELLER OF TALES

Mondays, March 20–May 8

10–11:30 a.m.

Phyllis Asnien, Leader-Teacher, Off-Campus Studies

This book discussion course explores the work of Pulitzer Prize winner Anne Tyler. Tyler's *Dinner at the Homesick Restaurant* is a funny, wise tale of a family who keeps trying to get it *right*. The author's 20th novel, *A Spool of Blue Thread*, is an example of her quirky, crackling wit. Books: A. Tyler, *Dinner at the Homesick Restaurant* and *A Spool of Blue Thread*

Bay United Methodist Church

Member of Lifelong Learning Price: \$82

Nonmember Price: \$97



## ENGLISH BOOKER PRIZE WINNERS

Tuesdays, March 21–May 9

10–11:30 a.m.

Joseph Jacoby, Leader-Teacher, Off-Campus Studies

In this book discussion course, participants examine English novelists who are profoundly interested in issues of ethics and morality. Iris Murdoch's classic work examines a group of well-intentioned but muddled idealists in the Gloucestershire countryside. The past collides with the present in Julian Barnes' novel about the tragic death of an intimate friend. Ian McEwan's newly published novel explores the clash of religious and secular world views in the law courts of contemporary London. Books: I. Murdoch, *The Bell*; J. Barnes, *The Sense of an Ending*; I. McEwan, *The Children Act*

Lakewood United Methodist Church

Member of Lifelong Learning Price: \$82

Nonmember Price: \$97

---

## ORWELL: A POLITICAL ALLEGORY

Tuesdays, March 21–May 9

10–11:30 a.m.

Barbara Parr, Leader-Teacher, Off-Campus Studies

This book discussion course examines George Orwell's classic *1984*, which is, perhaps, more relevant today than it was when published in 1948. Discussions focus on the literary merit of the novel as well as the cultural, philosophical and political topics Orwell includes. The course also examines *Animal Farm*, a political allegory and brilliant satire. Books: G. Orwell, *1984* and *Animal Farm*

Brecksville United Church of Christ

Member of Lifelong Learning Price: \$82

Nonmember Price: \$97

# COURSES

## STEINBECK'S AMERICA

Thursdays, March 23–May 11  
10–11:30 a.m.

Barbara Parr, Leader-Teacher, Off-Campus Studies

John Steinbeck is a familiar name to all of us. His voice is that of the ordinary working-class person facing both internal and external challenges in life. He takes on the human struggle in a timeless and universal language. His characters are richly developed and reach into our very souls. In *The Grapes of Wrath* and *In Dubious Battle*, Steinbeck addresses social and political issues of the Depression era. During this course, we will discuss the human, social and literary aspects of these works. His novels inspire and enrich readers of all generations. Books: J. Steinbeck, *In Dubious Battle* and *The Grapes of Wrath*

Middleburg Heights Church

Member of Lifelong Learning Price: \$82  
Nonmember Price: \$97

## STORIES FROM OUR NEIGHBORS TO THE NORTH

Thursdays, April 20–May 25  
1–3 p.m.

Sue Kisch, Lecturer in Lifelong Learning, CWRU

Canadian writers, our close northern neighbors and fellow English speakers, have their unique perspectives. Urban writers see their world differently from those from rural areas, or those who focus on specific ethnicities. While such authors as Mordecai Richler, Robertson Davies, Margaret Atwood and Alice Munro are noted for their novels, we will concentrate on their powerful short stories.

Landmark Centre—Beachwood

Member of Lifelong Learning Price: \$90  
Nonmember Price: \$110

## MARCH AND THE SECRET CHORD: NOVELS OF HISTORICAL IMAGINATION

Mondays, May 1–22  
1:30–3 p.m.

Sylvia Abrams, Retired Dean, Siegal College  
of Judaic Studies

Pulitzer Prize-winning author Geraldine Brooks is a master of historical fiction. She succeeds in creating lives for characters whose inner struggles are silent in the historical narrative. From Louisa May Alcott's beloved classic *Little Women*, Brooks has taken the character of the absent father, March, who has gone off to war, leaving his wife and daughters to make do in mean times. From the Bible, Brooks has created the story of the legendary warrior, King David. "Perhaps the hardships of war and the intricacies of human behavior are always at the heart of Brooks' books." This course will compare and contrast these two historical novels: *March* and *The Secret Chord*.

Cuyahoga County Public Library, Orange Branch

Member and Nonmember of Lifelong Learning Price: free  
Advance registration recommended

## CLASS STRIFE: A MULTI-GENERATIONAL LOOK THROUGH LITERATURE

Wednesdays, May 3–31  
7–8:30 p.m.

Barbara Parr, Instructor in Lifelong Learning, CWRU

The struggle of the underclass in our country is an issue that has transcended generations. This five-week class will begin with JD Vance's new best-selling memoir, *Hillbilly Elegy*. It is a disturbing, vivid and heart-rending look at his experiences while growing up in a dysfunctional family living in extreme poverty. To highlight the universal theme of class struggle, this course will also read F. Scott Fitzgerald's classic, *The Great Gatsby*. Both of these books will allow students to observe, analyze and discuss class issues. Participants should read the first six chapters of *Hillbilly Elegy* before the first class.

Lakewood Public Library, Main

Member and Nonmember of Lifelong Learning Price: free  
Advance registration recommended



## THE LEGACY OF ELIE WIESEL: HIS LIFE AND WORK

Thursdays, May 4–June 15  
1–3 p.m.

Reva Leizman, Lecturer in Lifelong Learning, CWRU

Nobel Peace Prize Laureate Elie Wiesel has been an eternal messenger to the world never to forget the Holocaust and a constant reminder that "the opposite of Love is not Hate, it's indifference." "There may be times when we are powerless to prevent injustice but there must never be a time when we fail to protest." In this course, participants will examine Wiesel's life and writings, which all bear witness to his efforts to better the world and make every individual aware of his/her responsibility to combat evil. Books: *Night*; *Gates of the Forest*; *The Fifth Son* as well as a reader that will be for sale at the first class.

Landmark Centre—Beachwood

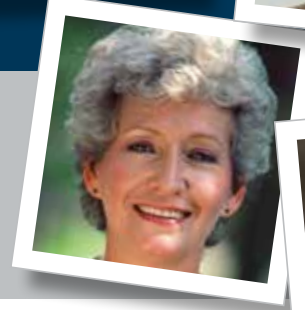
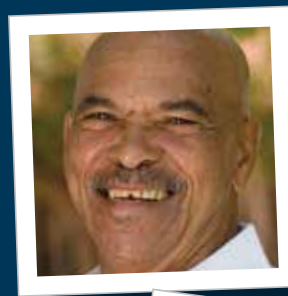
Member of Lifelong Learning Price: \$90  
Nonmember Price: \$110



SCHOOL OF MEDICINE  
**CASE WESTERN RESERVE**  
 UNIVERSITY



THE LAURA & ALVIN SIEGAL  
 LIFELONG LEARNING  
 PROGRAM



# Mini MED SCHOOL

Medical school for the rest of us

Learn how your body works and how new medical breakthroughs may affect you in the Case Western Reserve University School of Medicine's **Mini Med School**. The **Spring 2017** session begins May 3 from 6:30 – 8:30 p.m. Space is limited. No math or science background is necessary. Lectures are in plain English and there are no exams! All sessions are led by faculty experts from Case Western Reserve University.

*"This class offered more information about medicine in one month than most people get out of their doctors in a lifetime."*

**Orthopaedics: Common Foot and Ankle Problems**

Host: Randall Marcus, MD, professor of orthopaedics

**Wednesday, May 3**

**Reproductive Biology: High Risk Pregnancy, Short and Long Term Effects of Maternal Obesity on the Mother and Her Child**

Host: Patrick Catalano, MD, professor of reproductive biology

**Wednesday, May 10**

**Radiation Oncology: Overview of Radiation Oncology Featuring Proton Beam Therapy at UHMC**

Host: David Mansur, MD, associate professor of radiation oncology and pediatrics

**Wednesday, May 17**

**Pediatrics: ADHD Across the Lifespan**

Host: Max Wiznitzer, MD, professor of pediatrics and neurology

**Wednesday, May 24**

**Medicine: Integrative Oncology and Palliative Care**

Host: Richard Lee, MD, associate professor of medicine

**Wednesday, May 31**

*Mini Med School Medical Director: Nathan A. Berger, MD, director, Center for Science, Health and Society*

Join us Wednesday evenings at the Wolstein Building, 2103 Cornell Road, beginning May 3, 6:30-8:30 p.m. Light refreshments provided.

Registration fee \$87 for one person (\$160 for two) for the entire series; \$20 for a single session; parking not included. A detailed confirmation letter will be mailed to you upon completed registration. For more information, call 216.983.1239. To register by credit card, call 216.983.1239, fax 216.844.8133, visit our website (<http://case.edu/medicine/cme/courses-activities/mini-med/>) or mail this registration form to:

Continuing Medical Education Program  
 Case Western Reserve University  
 School of Medicine  
 10524 Euclid Avenue, Walker Suite 3129  
 Cleveland, Ohio 44106-6026

Please enroll me for **Mini Med School, Spring 2017, CID #1043**

Name \_\_\_\_\_

Address \_\_\_\_\_

City \_\_\_\_\_ State \_\_\_\_\_ Zip \_\_\_\_\_

E-mail \_\_\_\_\_

Phone Day ( ) \_\_\_\_\_ Evening ( ) \_\_\_\_\_

Registration: \$87 single person \_\_\_\_\_ \$160 for two \_\_\_\_\_

\$20 single session(s):  May 3  May 10  May 17  May 24  May 31

Total \$ \_\_\_\_\_

Make checks payable to **Case Western Reserve University** or

Credit Card:  MasterCard  Visa  Discover

Credit Card # \_\_\_\_\_ Card expiration date \_\_\_\_\_

Signature \_\_\_\_\_

# COURSES

## Politics and Contemporary Issues

### **IN OUR DEFENSE**

Mondays, March 20–May 15  
1–2:30 p.m.  
No class April 10

Barbara Greenberg, Attorney and Magistrate

*In Our Defense* is a primer about the Bill of Rights with each chapter focusing on one of the first 10 amendments of the U.S. Constitution, using an actual case to study the issues surrounding that amendment. Each week, students will review one chapter, one amendment and one case, discussing the laws that have developed from those facts. The class will use each case as the springboard for a discussion about how and why laws change, current laws focusing on that amendment and how constitutional amendments and the cases that follow those protected rights affect our daily lives. Book: C. Kennedy and E. Alderman, *In Our Defense*

Gates Mills Community House

Member of Lifelong Learning Price: \$82  
Nonmember Price: \$97



### **MY PROMISED LAND**

Tuesdays, March 21–May 9  
7:30–9 p.m.

Joe Konen, Leader-Teacher, Off-Campus Studies

Ari Shavit, a columnist for the Israeli daily *Haaretz*, is a beautiful storyteller who weaves narratives about individual (Jewish and Palestinian) founders, fighters and entrepreneurs of Israel as well as stories about individual communities (kibbutz, village, city, camp) into a narrative history of Israel over the last century and a quarter. Thomas Friedman says, “The uniqueness of Shavit’s book is that when you’re done with it you can understand, respect or love Israel—but not in a dogmatic or unthinking way, and not a fake or contrived Israel.” Book: A. Shavit, *My Promised Land: The Triumph and Tragedy of Israel*

First Unitarian Church of Cleveland

Member of Lifelong Learning Price: \$82  
Nonmember Price: \$97

### **RULES OF WAR**

Wednesdays, March 22–May 10  
10–11:30 a.m.

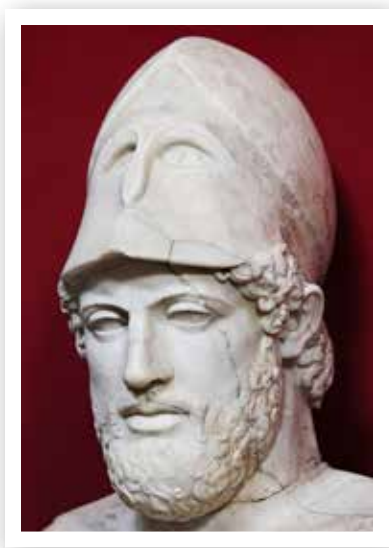
Jim Lane, Leader-Teacher, Off-Campus Studies

Can there be laws governing warfare that limit the barbarity of actions during times of armed conflict? Indeed there can be—and are—regulations that protect human dignity and lessen suffering, regulations that have been formally agreed to by most nations. This class is based upon an international curriculum developed by the Red Cross and is composed of discussions generated by readings and video resources. Topics to be covered include humanitarian actions, historical codes, applications of the rules of war, weaponry and targeting, child soldiers and prisoners of war, war crimes and the particular case of My Lai, judicial and nonjudicial actions dealing with violations and the needs arising from the destruction of war and the special case of refugees. Printed materials will be provided at cost for their reproduction and binding.

Rosemont Country Club

Member of Lifelong Learning Price: \$82  
Nonmember Price: \$97





### PERICLES AND THE BIRTH OF DEMOCRACY

Wednesdays, March 22–May 10  
10:30 a.m.–noon

Charlene Mileti, Leader-Teacher, Off-Campus Studies

In the fifth century, Athens, Greece, was a burgeoning democracy, the first of its kind to exist in human history. Born in 494 BCE, Pericles of Athens would rise to become one of the city's most beloved leaders. While Pericles' astute grasp of military and political affairs would place him at the head of Athens' government, he is, nonetheless, more remembered as the tutelary leader of the city. Contrasted with our modern democracies, Pericles' government functioned as the primary source for educating the citizenry in matters of civic and personal virtue. After his death, Athens would never again flourish as it did during Pericles' leadership. Book: D. Kagan, *Pericles of Athens and the Birth of Democracy*

Breckenridge Village

Member of Lifelong Learning Price: \$82  
Nonmember Price: \$97

### PERICLES AND THE BIRTH OF DEMOCRACY

Fridays, March 24–May 12  
10–11:30 a.m.

Charlene Mileti, Leader-Teacher, Off-Campus Studies

In the fifth century, Athens, Greece, was a burgeoning democracy, the first of its kind to exist in human history. Born in 494 BCE, Pericles of Athens would rise to become one of the city's most beloved leaders. While Pericles' astute grasp of military and political affairs would place him at the head of Athens' government, he is, nonetheless, more remembered as the tutelary leader of the city. Contrasted with our modern democracies, Pericles' government functioned as the primary source for educating the citizenry in matters of civic and personal virtue. After his death, Athens would never again flourish as it did during Pericles' leadership. Book: D. Kagan, *Pericles of Athens and the Birth of Democracy*

Judson Park

Member of Lifelong Learning Price: \$82  
Nonmember Price: \$97

### HATE SPEECH, HATE CRIMES AND ACADEMIA

Tuesdays, April 25–June 13  
10–11:30 a.m.

Alan Rosenbaum, Professor Emeritus,  
Cleveland State University

Academic freedom and the open exchange of ideas have long been cherished principles of American college life. But "the times they are a-changing." This course will explore the campus phenomenon of "safe spaces" where only those who think alike and look alike are admitted, as well as address when hate speech turns into hate crime. Class participants may expect a lively exchange of ideas and perspectives.

Landmark Centre—Beachwood

Member of Lifelong Learning Price: \$120  
Nonmember Price: \$140

# COURSES

## Religion, Philosophy and Science

### JEWISH LIFE UNDER ISLAM: THE EVOLVING EMPIRE (632-1090)

Tuesdays, January 24–February 14  
6:30–8:30 p.m.

Ezra Blaustein, Lecturer in Lifelong Learning, CWRU

This course will cover the period beginning with Muhammad's death and going through the end of the "Party King" period in Spain. This course will explore the Jewish intellectual and cultural blossoming in this era, and we will discuss the structure of the Jewish community in the rapidly changing Islamic empire. This course will also examine the various ways in which Muslim political leaders related to the Jewish minorities they ruled.

Landmark Centre—Beachwood

Member of Lifelong Learning Price: \$60  
Nonmember Price: \$75

### IF THE OCEANS WERE INK: A DIALOGUE WITH ISLAM AND THE QURAN

Mondays, March 20–May 8  
10:30 a.m.–noon

Joe Konen, Leader-Teacher, Off-Campus Studies

This book offers us a vehicle for a nuanced understanding of Islam. Carla Power, a Western reporter who grew up in several predominately Muslim countries, writes of her dialogues with prominent India-born and now London-based Sheikh Mohammad Akram Nadwi. The dialogue enlightens us on a nonviolent understanding of Islam. The sheik shows us how he distinguishes between culture and politics on the one hand and religion and spirituality on the other. Book: C. Power (2015), *If the Oceans Were Ink: An Unlikely Friendship and a Journey to the Heart of the Quran*

South Franklin Circle

Member of Lifelong Learning Price: \$82  
Nonmember Price: \$97

### RELIGIONS OF OHIO

Wednesdays, March 22–April 19  
1:30–3:30 p.m.

Kristen Tobey, Visiting Assistant Professor, Department of Theology and Religious Studies, John Carroll University

This course investigates the rich religious history and contemporary religious demographics of the region we now call Ohio, which has served as an incubator for several well-known religious groups and significant religious modes. The timeline of the course will stretch from the ancient mound builders into the present day, though much of our material will come from the 19<sup>th</sup> century, during which Ohio was an important site for a number of religious groups.

The College Club of Cleveland

Member of Lifelong Learning Price: \$115  
Nonmember Price: \$135

★ Senior Scholars



### AN ADVENTURE OF MIND AND SPIRIT

Thursdays, March 23–May 11  
1:30–3 p.m.

Jim Lane, Leader-Teacher, Off-Campus Studies

Delve into the realms of science, environmentalism, nature, mythology, spirituality, illusion and reality as we navigate through rich arenas of transformational ideas. Hermann Hesse's *Siddhartha*, a contemporary of the Buddha in ancient India who is seeking spiritual enlightenment, will first guide us. Next, Daniel Quinn's *Ishmael*—a gorilla who can telepathically communicate with his chosen human pupil—is trying to impart a radically new and more correct view of the world and the human place within it. Both protagonists will help us explore profound personal, societal, philosophical, religious and scientific questions. The two seemingly simple books offer an amazing depth of detail, possibility and potentially paradigm shifting insights, which lead to rich discussion. Books: H. Hesse, *Siddhartha*; D. Quinn, *Ishmael*

Laurel Lake Community Room

Member of Lifelong Learning Price: \$82  
Nonmember Price: \$97



### CELTIC SPIRITUALITY

Thursdays, March 23–May 11

10:30 a.m.–noon

Ted Smith, Leader-Teacher, Off-Campus Studies

Between mid-400 A.D. to mid-600 A.D., Ireland practiced a unique type of Christianity. After the fall of Rome, there was no central authority directing the practice of religion, no official date as to when Easter was to be observed each year, etc. The Irish embraced Christianity (without bloodshed) while still upholding their Druidic traditions. Irish men and women were both priests and bishops alike. Humanity was seen as fundamentally good, an integral part of God's creation. All of this was contrary to the writings of Augustine of Hippo, that men were born into sin, adopted as the official positions of Christendom. The Synod of Whitby in 664 A.D. favored the disciple Peter as the rock of the church as opposed to the disciple John, remembered as "listening for the heartbeat of God." What would Christianity be like today if the Synod had decided differently? Book: The Rev. Dr. J. Philip Newell, *Listening for the Heartbeat of God, A Celtic Spirituality*

Hamlet Village

Member of Lifelong Learning Price: \$82

Nonmember Price: \$97

### NEW PERSPECTIVES: A CONVERSATIONAL INTRODUCTION TO PHILOSOPHICAL THINKING

Tuesdays, March 28–May 30

6:30–8 p.m.

No class April 11 and 18

David Huston, History Teacher, Laurel School

This class is an opportunity to read, reflect, question and converse with fellow inquirers who want to investigate important issues and ideas. Using the unique approach of St. John's College ("The Great Books College"), *New Perspectives* will emphasize very short readings done in class of accessible classic texts in literature and philosophy chosen to stimulate thought and conversation. No previous experience or class preparation necessary—just an open and curious mind! Book: *New Landscapes* (\$58); Touchstone Press; [A Note to Previous Attendees: These will be fresh selections for us to discuss]

Landmark Centre—Beachwood

Member of Lifelong Learning Price: \$90

Nonmember Price: \$110



### JEWISH LIFE UNDER ISLAM: AROUND THE MEDITERRANEAN (10<sup>TH</sup>–13<sup>TH</sup> CENTURIES)

Tuesdays, May 2–23

6:30–8:30 p.m.

Ezra Blaustein, Lecturer in Lifelong Learning, CWRU

A little over a hundred years ago, an enormous cache of documents (called a geniza) was found in a Cairo synagogue. This discovery, known as the "Cairo Geniza," provides a window into Jewish life in Egypt and across the southern Mediterranean rim in the 10<sup>th</sup> through 13<sup>th</sup> centuries, giving us unparalleled access to the private, commercial, and intellectual lives of the Jews. This course will survey family and communal structures, it will look at the Jewish participation in trade with India and other destinations, and it will examine the intellectual achievements of Jewish leaders such as Maimonides.

Landmark Centre—Beachwood

Member of Lifelong Learning Price: \$60

Nonmember Price: \$75

# COURSES

## WRITING

### WRITING CREATIVE NONFICTION

Wednesdays, January 18–March 1  
1–3 p.m.

Linda Tuthill, Instructor in Lifelong Learning, CWRU

This course will use the *Essays of E.B. White* as examples of deftly written pieces by a master of the essay form. Class members will write in response to White's humane, often humorous selections. Work shared in class receives constructive feedback. Newcomers welcome.

Landmark Centre—Beachwood

Member of Lifelong Learning Price: \$90  
Nonmember Price: \$110

### POETRY WORKSHOP

Thursdays, January 19–March 2  
1–3 p.m.

Linda Tuthill, Instructor in Lifelong Learning, CWRU

The poet Rilke advises, "Our task is to listen to the news that is always arising out of silence." Class members learn to listen for the promptings that signal the beginning of a poem and share the work that emerges, receiving constructive feedback. Bring 15 copies of a poem to the first class. Newcomers welcome.

St. Paul's Episcopal Church

Member of Lifelong Learning Price: \$90  
Nonmember Price: \$110

### WRITING CREATIVE NONFICTION

Session I: Tuesdays, May 2–June 13  
Session II: Wednesdays, May 3–June 14  
1–3 p.m.

Linda Tuthill, Instructor in Lifelong Learning, CWRU

Gabriel Garcia Marquez believed, "Life is not what one lived, but what one remembers and how one remembers it in order to recount it." The class will share memories that have been distilled and shaped into memoir, giving and receiving constructive feedback. Newcomers welcome.

Squire Valleevue and Valley Ridge Farms, Kutina Classroom

Member of Lifelong Learning Price: \$90  
Nonmember Price: \$110

### POETRY WORKSHOP

Thursdays, May 4–June 15  
1–3 p.m.

Linda Tuthill, Instructor in Lifelong Learning, CWRU

Poets develop the habit of paying close attention to the world around them and look for fresh ways of seeing and connecting images. Bring 15 copies of a poem to the first class. Work read in class receives supportive feedback. Newcomers welcome.

Squire Valleevue and Valley Ridge Farms, The Pink Pig

Member of Lifelong Learning Price: \$90  
Nonmember Price: \$110



### LIFE INTO ART: 10 TIPS FOR WRITING GREAT CREATIVE NONFICTION

Thursday, May 11  
10 a.m.

Ayelet Tsabari, Author

How do writers turn lived experience into literary art? What makes for a great true-life narrative? Do you have to live an extraordinary life to write nonfiction? To locate the stories in your life, apply fiction techniques to enhance your work and experiment with form, structure, tense and voice. Discussion and writing exercises will focus on finding your theme, identifying the conflict, confronting your fears and falling in love with revision. In this workshop, Ayelet Tsabari offers 10 practical tips to help you refine your prose, deepen your understanding of the genre and create stronger and more compelling nonfiction. Space is Limited

Landmark Centre—Beachwood

Member of Lifelong Learning Price: \$10  
Nonmember Price: \$15

*Ayelet Tsabari's visit is generously supported by the Herbert and Mariana Luxenberg Siegal College Lecture Fund of the Jewish Federation of Cleveland and the Israel Arts Connection of the Jewish Federation of Cleveland.*





BAROQUE ORCHESTRA  
*jeannette sorrell*

*Celebrating our*  
**25<sup>TH</sup> ANNIVERSARY SEASON**  
*2016-2017*

---

*“Superlative music-making... combining European stylishness  
and American can-do entrepreneurialism.”*

THE DAILY TELEGRAPH, London

---

# PROGRAMS

## CONVERSATIONS AT JUDSON PARK

This lecture series, offered in collaboration with Judson Park, is a unique monthly luncheon program open to the public. A variety of academic and contemporary issues are discussed. Led by local university faculty and laypeople, these forums provide participants with the opportunity to engage in meaningful conversations and ask questions of topic experts.

## EASTSIDE CONVERSATIONS

Loosely fashioned after the popular City Club Forum, these sessions provide the community with a unique luncheon program once a month in which contemporary issues are discussed. Led by local university faculty and laypeople, this forum provides participants the opportunity to engage in meaningful questions and conversations. For more information on Eastside Conversations, contact Helga Miller, program coordinator, at 216.368.1284.

## JEWISH STUDIES

Case Western Reserve University's Laura and Alvin Siegal Lifelong Learning Program continues the legacy of Jewish adult education courses offered for nearly nine decades through the Laura and Alvin Siegal College of Judaic Studies and its predecessor institutions. Offerings include courses in basic to advanced Hebrew language instruction, Bible study, Jewish thought, history, culture and literature. The Distinguished Lecture Series brings world-renowned experts in Jewish studies to engage our community. Film screenings and cultural programs explore contemporary Jewish life in America and abroad.

## NORTHEAST OHIO PUBLIC POLICY SERIES

These engaging forums bring together a panel of local leaders and experts who exchange ideas and share views on a particular issue affecting Northeast Ohio. Held approximately once a month throughout the community, each discussion begins at 7 p.m. and is free and open to the public. This series is co-sponsored by the Siegal Lifelong Learning Program, the League of Women Voters of Greater Cleveland, Advance Ohio, Cuyahoga County Public Library, Lakewood Public Library, Cleveland Heights-University Heights Public Library, Solon Community Center, and corporate sponsor First Interstate Properties Ltd.

## OFF-CAMPUS STUDIES

Off-Campus Studies is a program offered in collaboration with the Association for Continuing Education (ACE). It began in 1947 as Living Room Learning, developed by Grazella Shepherd at Cleveland College, who encouraged the Women's Association, predecessor of ACE, to help design and promote classes. Courses are eight weeks long and meet for 1.5 hours per class (unless otherwise noted) in locations across Greater Cleveland. There are no written assignments or exams, but rather the classes provide an open environment for lively discussion based on meaningful examination of shared texts. Leader-Teachers facilitate the discussion and provide academic background and context. Off-Campus Studies is unique among continuing education programs because it is organized in collaboration with its participants. Designated class coordinators volunteer to serve as the liaison between the office and the study groups. The discussion groups select the courses with the help of the class coordinator and the office. Participation is open to everyone, and groups welcome new members with enthusiasm. New groups are welcome. Please call 216.368.2090 to establish a study group in your neighborhood. Sessions require a minimum of 10 participants. All Off-Campus Studies courses are listed by subject matter under the Courses section.

## ORIGINS SCIENCE SCHOLARS PROGRAM

The Institute for the Science of Origins (ISO) is a partnership of Case Western Reserve University, the Cleveland Museum of Natural History and ideastream. During this unique program, members of the community engage with one another and with leading scholars of the origins sciences to investigate rapidly developing areas of origins science. Each evening begins with a presentation by a world-class researcher, followed by complimentary dinner and open discussion among all participants.



## SENIOR SCHOLARS

Senior Scholars is an 11-week program that meets three afternoons per week and features academic lectures by university faculty and local experts on a variety of topics. While the format is lecture style, the afternoons are informal and interactive with opportunity to ask questions and discuss the topics of the day. Senior Scholars courses cost:

Spring semester: members—\$235; nonmembers—\$260

One day per week: members—\$115; nonmembers—\$135

The listings for spring courses are below.

*Senior Scholars is generously supported by the Jane and Jon Outcalt Foundation.*

### Tuesdays

- **THE EUROPEAN UNION: HISTORY, STRUCTURE AND FUTURE**

Kenneth Ledford, Associate Professor of History and Law, CWRU

Tuesdays, January 31–April 18 | 1:30–3:30 p.m.

No class March 14

(full listing on page 19)

### Wednesdays

- **THE WARREN COURT**

Barbara Greenberg, Attorney and Magistrate

Wednesdays, February 1–March 8 | 1:30–3:30 p.m.

(full listing on page 19)

- **RELIGIONS OF OHIO**

Kristen Tobey, Visiting Assistant Professor, Department of Theology and Religious Studies, John Carroll University

Wednesdays, March 22–April 19 | 1:30–3:30 p.m.

(full listing on page 36)

### Thursdays

- **THE GAME'S AFOOT AGAIN: RE-IMAGININGS OF SHERLOCK HOLMES**

JoAnne Podis, Emerita Professor of English, Ursuline College

Thursdays, February 2–March 2 | 1:30–3:30 p.m.

(full listing on page 30)

- **NATIVE AMERICAN LITERATURE**

Jeff Kareem, Professor of English, Cleveland State University

Thursdays, March 9–April 20 | 1:30–3:30 p.m.

No class March 16

(full listing on page 31)

## UNIVERSITY FARM PROGRAM

Owned by Case Western Reserve, the University Farm, which comprises Squire Valleevue and Valley Ridge Farms, is a beautiful 389-acre property in Hunting Valley, Ohio, featuring forests, ravines, waterfalls, meadows, ponds and a self-contained watershed. Farm classes take advantage of this spectacular landscape for inspiration and as a setting for learning about nature, cultivation and the environment.



# SPONSORS AND TEAM

## Lifelong Learning Team

---

**BRIAN AMKRAUT**

Executive Director

**ALANNA COOPER**

Director of Jewish Lifelong Learning

**KATHY GILL**

Director of Marketing

**SHERYL HIRSH**

Assistant Director of Jewish Lifelong Learning

**MICHELLE MILLER**

Manager of Educational Travel

**LORRAINE NELSON**

Program Administrator

**FELICIA WESTBROOKS**

Program Administrator/Department Assistant III

**ELANA GOODWIN**

Office Assistant

## Sponsors

---

Advance Ohio

Apollo's Fire

Appletree Books

Association for Continuing Education (ACE)

Association for Jewish Studies

Cleveland Jewish Arts and Culture Lab, Mandel

Jewish Community Center of Cleveland

*Cleveland Jewish News*

*Cleveland Jewish News* Foundation

Cleveland Museum of Art

Cleveland Museum of Natural History

Cuyahoga County Public Library

David and Robert Stein Family Foundation

First Interstate Properties Ltd.

Institute for the Science of Origins

Jewish Federation of Cleveland

Kelvin Smith Library

Kol HaLev, Cleveland's Reconstructionist

Jewish Community

Kol Israel Foundation

Lakewood Public Library

Laurel School

Literary Cleveland

Maltz Museum of Jewish Heritage

Oheb Zedek-Cedar Sinai Synagogue

Salo W. and Jeannette M. Baron Foundation

Solon Community Center

Squire Valleevue and Valley Ridge Farms

The Friends of Jewish Lifelong Learning

The League of Women Voters—Greater Cleveland

THANK  
YOU

...for your continued support.



# REGISTRATION

## Registration Policies

---

### MEMBERSHIP

The Siegal Lifelong Learning Program has implemented a membership program. The membership fee replaces prior years' annual registration fee. Membership is optional and is valid for a rolling 12-month period. Members receive priority registration, exclusive discounts, invitations to members-only events and much more. A complete list of membership benefits can be found at [case.edu/lifelonglearning/membership/](http://case.edu/lifelonglearning/membership/). The cost structure for membership is \$36 for the individual or \$62 for member plus one. Nonmembers may still register for most events and classes, but do not enjoy priority registration or member discounts or benefits. Additional member benefits may be available to participants in the Siegal Lifelong Learning Annual Fund.

### DISCOUNTS

Case Western Reserve University alumni and retirees (faculty and staff), ACE members and Friends of Jewish Lifelong Learning Members are entitled to a 10 percent discount on course fees.

### WITHDRAWALS AND SUBSTITUTIONS

- A 100 percent refund will be issued to the registered student if a completed withdrawal request is received prior to five business days before the start date of the class or lecture.
- A 50 percent refund will be issued for withdrawal requests received on or after five, but prior to three business days before the start date of the class or lecture.
- There is no refund for withdrawal requests received on or after three days prior to the start date of the class or lecture; no exceptions will be made.
- If unable to attend, you may substitute another person at no additional cost; please notify of change or substitution at least one day prior to the start date of the class or lecture.
- Withdrawal requests must come directly from the student or his/her designee; the official receipt date is the day and time the request is received in the Lifelong Learning office.

### CANCELLATIONS

Although Lifelong Learning is committed to delivering all classes, workshops or lectures that are scheduled, there are times when a class, workshop or lecture is canceled due to minimum enrollment requirements. If Lifelong Learning cancels a class, a 100 percent refund is automatically processed for participants who do not choose to transfer to another available class. Lifelong Learning staff will make every attempt to notify participants of cancellations via registration information. Participants may also call 216.368.2090 for cancellations.

### REFUNDS

Refunds can be processed using the credit card used at the time of registration and payment. All other forms of payment will be refunded by check from Case Western Reserve University to the student. Please allow three to four weeks for the refund check to be processed and mailed to the address given at the time of registration. If there has been an address change, please provide the corrected address with your withdrawal request.

# REGISTRATION FORM

**MAIL:** Send completed form to address below.

**ONLINE:** [case.edu/lifelonglearning](http://case.edu/lifelonglearning)

**PHONE:** 216.368.2090

Name \_\_\_\_\_

Address \_\_\_\_\_

City \_\_\_\_\_ State \_\_\_\_\_ Zip \_\_\_\_\_

Telephone \_\_\_\_\_ Email \_\_\_\_\_

LIST NAME OF COURSE, LECTURE, EVENT OR WORKSHOP BELOW.

Program Name \_\_\_\_\_ FEE \$ \_\_\_\_\_

Program Name \_\_\_\_\_ FEE \$ \_\_\_\_\_

Program Name \_\_\_\_\_ FEE \$ \_\_\_\_\_

Program Name \_\_\_\_\_ FEE \$ \_\_\_\_\_

Program Name \_\_\_\_\_ FEE \$ \_\_\_\_\_

Program Name \_\_\_\_\_ FEE \$ \_\_\_\_\_

DISCOUNT OF 10% ON COURSES DISCOUNT \$ (- \_\_\_\_\_)  
(ACE Members, CWRU Alumni, current or former CWRU  
faculty and staff, Friends of Jewish Lifelong Learning)

MEMBERSHIP FEE (Rolling 12 Months) INDIVIDUAL MEMBER \$36 \_\_\_\_\_  
MEMBER PLUS ONE \$62 \_\_\_\_\_

Name of Plus One (if applicable) \_\_\_\_\_

MORE INFORMATION ABOUT MEMBER BENEFITS:  
[case.edu/lifelonglearning/membership/](http://case.edu/lifelonglearning/membership/)

TOTAL \_\_\_\_\_

If paying by check please make payable to  
Case Western Reserve University and mail to:

The Laura and Alvin Siegal Lifelong Learning Program  
Case Western Reserve University  
10900 Euclid Avenue, Thwing Center, Room 153  
Cleveland, OH 44106-7116

CREDIT CARD

MasterCard      Visa      Discover

TOTAL \$ \_\_\_\_\_

\_\_\_\_\_  
Name on Card      Exp. (MM/YY)

\_\_\_\_\_  
Account No.      CV Code



THE LAURA & ALVIN SIEGAL  
LIFELONG LEARNING  
PROGRAM

# LOCATIONS

Bay United Methodist Church  
29931 Lake Road  
Bay Village, OH 44140

Breckenridge Village  
36851 Ridge Road  
Willoughby, OH 44094

Brecksville United Church of Christ  
23 Public Square  
Brecksville, OH 44141

Church of the Redeemer  
2420 S. Taylor Road  
Cleveland Heights, OH 44118

Cleveland Heights-University Heights  
Public Library  
2345 Lee Road  
Cleveland Heights, OH 44118

Cleveland Museum of Art  
11150 East Blvd.  
Cleveland, OH 44106

Cleveland Skating Club  
2500 Kemper Road  
Cleveland, OH 44120

Cleveland Museum of Natural History  
1 Wade Oval Drive  
Cleveland, OH 44106

Cuyahoga County Public Library,  
Mayfield Branch  
500 SOM Center Road  
Mayfield, OH 44143

Cuyahoga County Public Library,  
Orange Branch  
31300 Chagrin Blvd.  
Cleveland, OH 44124

Cuyahoga County Public Library,  
Parma-Snow Branch  
2111 Snow Road  
Parma, OH 44134

First Unitarian Church of Cleveland  
21600 Shaker Blvd.  
Shaker Heights, OH 44122

Gates Mills Community House  
1460 Chagrin River Road  
Gates Mills, OH 44040

Hamlet Village Clubhouse  
324 Hamlet Hills Drive  
Chagrin Falls, OH 44022

Judson Manor  
1890 East 107th St.  
Cleveland, OH 44106

Judson Park  
2181 Ambleside Drive  
Cleveland, OH 44106

Lakewood Public Library, Main  
15425 Detroit Ave.  
Lakewood, OH 44107

Lakewood United Methodist Church  
15700 Detroit Ave.  
Lakewood, OH 44107

Landmark Centre Building  
25700 Science Park Drive, Suite 100  
Beachwood, OH 44122

Laurel Lake Community Room  
200 Laurel Lake Drive  
Hudson, OH 44236

Laurel School-Lyman Campus  
1 Lyman Circle  
Shaker Heights, OH 44122

Mandel Jewish Community Center  
26001 S. Woodland Road  
Beachwood, OH 44122

Middleburg Heights Church  
7165 Big Creek Parkway  
Middleburg Heights, OH 44130

Private Residence  
13803 Cormere Ave.  
Cleveland, OH 44120

Rocky River Public Library  
1600 Hampton Road  
Rocky River, OH 44116

Rosemont Country Club  
3777 Rosemont Blvd.  
Fairlawn, OH 44333

Solon Community Center  
35000 Portz Parkway  
Solon, OH 44139

South Franklin Circle  
16600 Warren Court  
Chagrin Falls, OH 44023

Squire Valleevue and  
Valley Ridge Farms  
37125 Fairmount Blvd.  
Hunting Valley, OH 44022

St. Paul's Episcopal Church  
2747 Fairmount Blvd.  
Cleveland Heights, OH 44118

Suburban Temple—Kol Ami  
22401 Chagrin Blvd.  
Beachwood, OH 44122

The College Club of Cleveland  
2348 Overlook Road  
Cleveland Heights, OH 44106

Tinkham Veale University Center,  
CWRU campus  
11038 Bellflower Road  
Cleveland, OH 44106

Trinity Cathedral  
2230 Euclid Ave.  
Cleveland, OH 44115

University Hospitals  
Cleveland Medical Center  
Lerner Tower  
11100 Euclid Ave,  
Cleveland, OH 44106

Westlake United Methodist Church  
27650 Center Ridge Road  
Westlake, OH 44145



THE LAURA & ALVIN SIEGAL  
LIFELONG LEARNING  
PROGRAM

*Siegel Lifelong Learning Program*  
Case Western Reserve University  
10900 Euclid Avenue  
Cleveland, Ohio 44106-7116

# ORIGINS UNLIMITED: CRUISE TO THE BRITISH ISLES, NORWAY AND ICELAND

---



**August 6–20, 2017**

Sail from Amsterdam to Edinburgh and Invergordon, Scotland where you can sample the refinement and ruggedness of Edinburgh and the atmospheric beauty of the Scottish Highlands. Then, take in the spectacular waterfalls and geothermal delights in Reykjavík and Ísafjörður, Iceland before cruising through the breathtaking fjords along the coast of Norway.

**Trip Leaders:** Glenn Starkman, Distinguished University Professor of Physics and Astronomy; Director, Institute for the Science of Origins and Patricia Princehouse, Director, Program in Evolutionary Biology; Outreach Director Institute for the Science of Origins

For more details visit, [case.edu/lifelonglearning/origins-unlimited/](http://case.edu/lifelonglearning/origins-unlimited/)  
or contact **Michelle Miller** at 216.368.8745 or [mlm231@case.edu](mailto:mlm231@case.edu).