

AMADEUS FLEET

DELUXE EUROPEAN RIVER SHIPS



Category 2 Stateroom



Panorama Restaurant



Panorama Bar



Sun Deck

AMADEUS FLEET

DELUXE EUROPEAN RIVER SHIPS

70 TO 84 SUITES AND STATEROOMS

The meticulously crafted, deluxe AMADEUS FLEET, including the new AMADEUS QUEEN, which is launching in 2018, sets new standards in ship design and technology and features the comforts of a refined and traditional hotel, including complimentary onboard Wi-Fi.

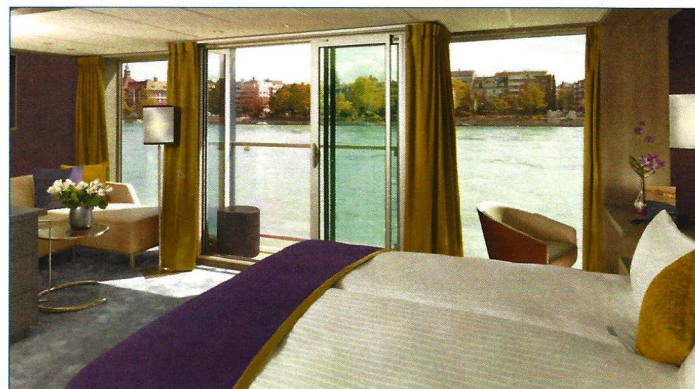
Each exclusively chartered ship offers up to 84 river-view, air-conditioned, stylishly appointed Suites (up to 284 square feet) and Staterooms (from 161 square feet), among the most spacious of any European river ship. Most accommodations feature a unique floor-to-ceiling panoramic window whose upper half can automatically lower to create a French balcony. Junior Suites feature a private balcony and an interior sitting area. (AMADEUS BRILLIANT features sliding glass doors with iron railings in Suites and most Staterooms.) Each Suite and Stateroom typically has two twin beds that convert into one queen bed, a private bathroom with shower, individual climate control, walk-in closet, telephone, television, writing desk, sitting area, safe and hair dryer. Most accommodations have a minibar.

Freshly prepared continental meals featuring local ingredients are served in single, unassigned seatings in each ship's delightfully scenic Panorama Restaurant, featuring floor-to-ceiling windows, and include early-risers' coffee, buffet breakfast, lunch, afternoon tea, four-course dinner and late-evening snack. Complimentary wine and beer are served with lunch and dinner.

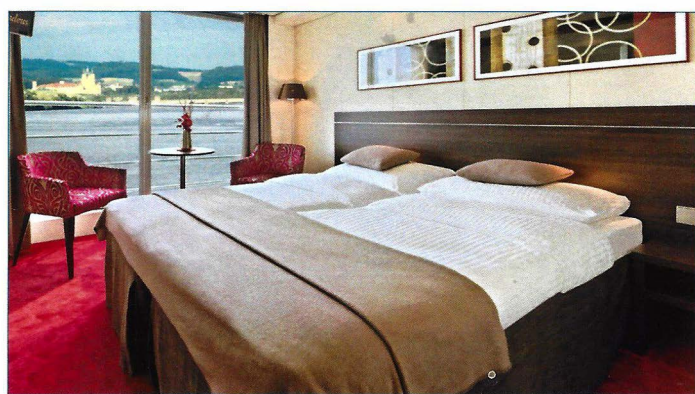
Inviting public facilities are spacious and typically include the Panorama Bar, Lido Bar, Amadeus Club with library and 24-hour coffee station, beauty salon, boutique and fitness studio with early morning exercise classes and massage services. The Sun Deck has a chessboard and shuffleboard.

The AMADEUS QUEEN features an indoor pool under a roof that can open up to the sky. Guests will also appreciate the use of an audio headset for listening enhancement during shore excursions. Complimentary bicycles are available for independent pursuits on shore. The ship has an elevator serving all passenger decks except the Sun Deck, and laundry service is available. There is no doctor aboard the ship.

The English-speaking, international crew provides warm hospitality. The AMADEUS FLEET meets the highest safety standards and is one of the only European river ship fleets to have been awarded the "Green Certificate" of environmental preservation.



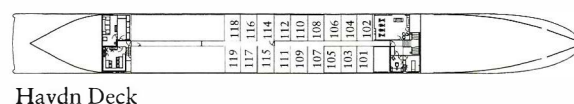
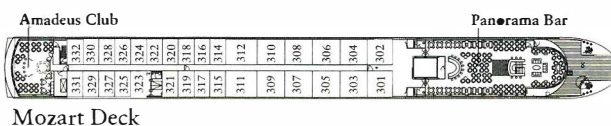
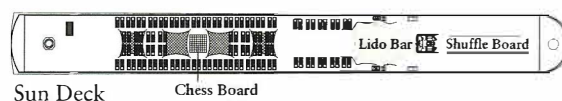
Suite—AMADEUS PROVENCE



Category 1 Stateroom—AMADEUS BRILLIANT

MS AMADEUS SILVER II & III

DECK PLAN*



*Deck plans vary slightly by individual ship.

SHIP SPECIFICATIONS

Number of Ships in Fleet:	15
Officers and Crew:	International (40)
Language:	English
Suites and Staterooms:	70 to 84
Accommodations Size:	161 to 284 square feet
Length:	235 feet
Width:	37 feet
Built/Refurbished:	2002/2018