

REMOTE COURSES & LECTURES

APRIL / MAY / JUNE 2021



THE LAURA & ALVIN SIEGAL
LIFELONG LEARNING
PROGRAM

REGISTRATION

REGISTER ONLINE

Register online through our secure site at
case.edu/lifelonglearning

REGISTER BY MAIL

Return the registration form in the back of this catalog to:
The Laura and Alvin Siegal Lifelong Learning Program
Case Western Reserve University
10900 Euclid Ave.
Cleveland, OH 44106-7116

REGISTER BY PHONE

216.368.2090 (Campus office) or
216.368.2091 (Beachwood office)

POLICIES

Registration policies including course withdrawals, cancellations and refunds can be found on our website.
Visit **case.edu/lifelonglearning/registration-policies**

MEMBERSHIP

An optional membership model offers reduced fees for courses, lectures and most ticketed events among other perks. Details and pricing are available on our website.
Visit **case.edu/lifelonglearning/membership**

HOW TO REACH US

Case Western Reserve
University Campus
p 216.368.2090
f 216.368.1868

Siegal Lifelong Learning
Beachwood Office
p 216.368.2091
f 216.368.1003

Email:
lifelonglearning@case.edu

Website:
case.edu/lifelonglearning

Mailing Address:
The Laura and Alvin Siegal
Lifelong Learning Program
Case Western Reserve University
10900 Euclid Ave.
Cleveland, OH 44106-7116

Landmark Centre Building
25700 Science Park Drive
Suite 100
Beachwood, OH 44122

Visitors and Deliveries:
Thwing Center, Room 153
11111 Euclid Ave.
Cleveland, OH 44106-7116

CONTENTS

Message from the Director	2
---------------------------------	---

Courses

Art and Music	4
Hebrew	5
History and Culture	6
Jewish Studies	7
Literature and Writing	9
Philosophy and Religion	11
Politics and Contemporary Issues	12

Series and Programs

Intersecting Pandemics	13
Israeli Speaker Series	14
Origins Science Scholars Series	14
Time for 24	16

Single Lectures and Events	15
----------------------------------	----

Membership and Registration	19
-----------------------------------	----

Registration Form	20
-------------------------	----

MESSAGE FROM THE DIRECTOR

Dear Friends,

As COVID-19 continues to keep us at home, we hope you have been enjoying Siegal Lifelong Learning's remote programming. After completing a recent course, frequent Siegal participant Nan G. wrote to us, noting, "Siegal classes are rescuing me during this seemingly eternal pandemic."



Siegal's full array of programs will remain in remote format for the second quarter of 2021 and until Case Western Reserve University policy and global health conditions permit us to return to the classroom. While there is no substitute for face-to-face learning and the sense of community that develops in that environment, we are pleased to see so many of you increasingly comfortable using the Zoom platform and its features.

As you can see throughout the pages of this catalog, there is a diverse repertoire of courses, lectures and series again this quarter. With the use of remote learning, we have broadened our audience to include learners from around the globe while also expanding to feature more national and international academics and experts.

For those of you who participate regularly, **becoming a member of Siegal Lifelong Learning** allows you to take advantage of discounted pricing. Information can be found on page 19.

Should you have any difficulties finding what you're looking for, our staff is here to assist you. Please contact us at **216.368.2090** or **216.368.2091**, or visit our website at **case.edu/lifelonglearning**.

We look forward to seeing you (virtually) soon.

Sincerely,

A handwritten signature in black ink, appearing to read "B. Amkraut".

BRIAN AMKRAUT
Executive Director

MAKE SIEGAL LIFELONG LEARNING A PART OF YOUR PERSONAL LEGACY



A BENEFICIARY
DESIGNATION GIFT MAY
BE RIGHT FOR YOU:

- ☒ Will or Trust
- ☒ Life Insurance
- ☒ Retirement Plan or IRA
- ☒ Savings or
Investment Account

Find the Right Gift Plan for You

- **Sample Bequest Language – for your will, trust or other philanthropic plan**

"I give to Case Western Reserve University, an Ohio educational and charitable corporation, in Cleveland Ohio ... [choices] A cash bequest of (\$___); A percentage (___%) of my estate; The residue of my estate. I request that this bequest be used for the Siegal Lifelong Learning Program."

- **Charitable IRA Rollover**
- **Securities (stocks, bonds, mutual funds)**
- **Donor Advised Funds**
- **Charitable Gift Annuities**
- **Memorial/Tribute Gifts**

Advise your broker of your gift intent and contact the Case Western Reserve University Office of Investments at 216.368.3253 or investmentoffice@case.edu

Legal Name:
Case Western Reserve University
Federal Tax ID # 34-1018992



THE LAURA & ALVIN SIEGAL
LIFELONG LEARNING
PROGRAM

For more information, please contact:

Charles M. Miller, JD, AEP®
Senior Director, National Development
cmm38@case.edu or 216.368.8640

COURSES

Art and Music

CONTEMPORARY STORIES: GLOBAL ART FROM THE 20TH AND 21ST CENTURIES

Cleveland Museum of Art Staff

Tuesdays, April 6–May 11
10–11 a.m. ET

Organized in tandem with the reinstallation of the contemporary galleries at the CMA, this six-session virtual course will offer a survey of global contemporary art and introduce audiences to new artistic voices including Simone Leigh, Mrinalini Mukherjee, Kendell Geers, Daniel Lind-Ramos, Malangatana Ngwenya, Al Loving, Zilia Sánchez, Elias Sime, Cady Noland, Teresa Margolles, and Sheila Hicks. Each week will explore the work of select artists through key themes including portraiture and figuration; organic and geometric abstraction; the use of found and industrial materials; and the rediscovery of craft, among others.

Member Cost: \$86
Nonmember Cost: \$104

THREE DAYS IN TUSCANY: A JOURNEY TO THE ARTISTIC TREASURES OF SIENA

Kristin Stasiowski, Assistant Dean, International Programs and Education Abroad, Assistant Professor, Italian Language and Literature, Kent State University

Wednesdays, April 14–28
7–8:30 p.m. ET

Join us for an introduction to the vibrant history, architecture, and art of the city of Siena. Over the course of three weeks, Dr. Stasiowski will lead you through an in-depth reading of the images presented in Ambrogio Lorenzetti's frescoes in the Sala dei Nove in Siena, Italy; the history, ritual, and excitement of the Palio of Siena; and the rich and storied history of Siena and how her cathedral mirrors the spiritual, political, and aesthetic concerns of her citizens.

Read: *A History of Siena: From its Origins to the Present Day* (Cities of the Ancient World; ISBN 978-0367253486). This book is supplementary and is not required.

Member Cost: \$50
Nonmember Cost: \$61



SELECT ARTISTS OF THE LATE 20TH CENTURY: THEIR EXPRESSIONS IN AN EVER-CHANGING WORLD

Carol Salus, Professor Emerita of Art History, Kent State University

Mondays, June 7–July 19 (no class July 5)
10–11:30 a.m. ET

In this course, we will examine a sampling of major figures from the many movements of the last decades of the twentieth century, including pop art, earth art, minimalism, feminism, and art dealing with racial issues. In addition, we will look at several of the most provocative figurative artists such as Francis Bacon, Anselm Kiefer, and Shirin Neshat. Our goal is an understanding of select artists during these years in which prosperity and mechanization flourished as well as how their creations reflected the social and historical issues of the time.

Member Cost: \$99
Nonmember Cost: \$119

Hebrew

Conversational Hebrew allows students to reach their goal of communicating in Israel's native language, to read Israeli newspaper, view Israeli television, and enjoy Hebrew literature, songs, drama and film. **Classical Hebrew** exposes students to the sights and sounds of the original Hebrew letters appearing in the Bible. Students will have multiple opportunities to absorb the content using various activities, games, and manipulatives.

Member Cost: \$96

Nonmember Cost: \$108

Conversational Hebrew

INTRODUCTION TO CONVERSATIONAL HEBREW (NEW COURSE)

Leah Cooper, Hebrew Language Instructor

Fridays, May 28–July 2

10 a.m.–noon ET

ADVANCED BEGINNER CONVERSATIONAL HEBREW

Leah Cooper, Hebrew Language Instructor

Mondays, May 24–July 12 (no class 5/31; 7/5)

1–3 p.m. ET

INTERMEDIATE CONVERSATIONAL HEBREW

Leah Cooper, Hebrew Language Instructor

Tuesdays, May 25–June 29

6:30–8:30 p.m. ET

INTERMEDIATE CONVERSATIONAL HEBREW

Rivka Taub, Hebrew Language Instructor

Wednesdays, May 26–June 30

1–3 p.m. ET

INTERMEDIATE CONVERSATIONAL HEBREW

Leah Cooper, Hebrew Language Instructor

Thursdays, May 27–July 1

10 a.m.–noon ET

ADVANCED CONVERSATIONAL–HEBREW LITERATURE

Judith Shamir, Hebrew Language Instructor

Tuesdays, May 25–June 29

10 a.m.–noon ET

ADVANCED CONVERSATIONAL HEBREW

Rivka Taub, Hebrew Language Instructor

Tuesdays, May 25–June 29

10 a.m.–noon ET

ADVANCED CONVERSATIONAL HEBREW

Judith Shamir, Hebrew Language Instructor

Thursdays, May 27–July 1

10 a.m.–noon ET

ADVANCED CONVERSATIONAL HEBREW

Rivka Taub, Hebrew Language Instructor

Thursdays, May 27–July 1

6:30–8:30 p.m. ET

Classical Hebrew

INTRODUCTION TO CLASSICAL HEBREW (NEW COURSE)

Holly Litwin, Hebrew Language Instructor

Wednesdays, May 26–June 30

6:30–8:30 p.m. ET

INTERMEDIATE CLASSICAL HEBREW

Holly Litwin, Hebrew Language Instructor

Thursdays, May 27–July 1

6:30–8:30 p.m. ET



History and Culture

WINSTON CHURCHILL'S INSPIRED LEADERSHIP

Whitney Lloyd, Instructor of Lifelong Learning

Mondays, April 5–May 10
1:30–3 p.m. ET

This course will examine Winston Churchill's defiant resistance to Adolph Hitler's ferocious attempt to subjugate Great Britain in 1940–1941. We will evaluate Churchill's strengths and weaknesses in resisting capitulation to the Nazi onslaught before the United States and Soviet Union entered the war on the side of the Allies. Eric Larson's riveting work chronicles events and brings to life this terrifying chapter of the war while providing vivid first-hand accounts of the experience of the major players – civilian, political and military. We will evaluate Churchill's leadership during this time in the context of his illustrious career.

Read: *The Splendid and the Vile*, Eric Larson

Member Cost: \$78
Nonmember Cost: \$93

This course is offered with the generous support of the Association for Continuing Education (ACE).



CROSSCURRENTS: BRONZE AGE AEGEAN CULTURES

Jim Lane, Instructor of Lifelong Learning

Tuesdays, April 6–May 11
1–2:30 p.m. ET

Three Aegean cities dominated much of the cultural development of Europe during the Bronze Age: Knossos in Crete, Mycenae in Greece, and Troy in Asia Minor. What were their cultures and lifestyles like? How did they interact and trade? What do the ancient Greek myths, legends, and Homeric epics reveal about the history of these locations and their peoples? Who were the archaeologists who competed to discover, unearth and interpret these sites and their contents –and who twisted ethics and science in doing so? And how has the knowledge gleaned from these locales inspired and helped shape subsequent thought, including that of modern day psychology? Lecture and discussion will be supplemented by Powerpoint slides to provide visual and contextual enhancement.

Member Cost: \$78
Nonmember Cost: \$93

This course is offered with the generous support of the Association for Continuing Education (ACE).

ALLIED CONFERENCES OF WORLD WAR II

Patrick Moore, Instructor of Lifelong Learning

Thursdays, April 8–May 27
2–3:30 p.m. ET

Allied leaders met frequently during the war to develop strategy and to set a course for the post-war world. We will focus on several high-level meetings – those which involved the “Big Three” – from Casablanca to Potsdam. Status of the war effort against the Axis will be reviewed at the time of each conference. Material includes historians' articles, documents and maps.

Member Cost: \$90
Nonmember Cost: \$105

This course is offered with the generous support of the Association for Continuing Education (ACE).

Jewish Studies

LOST AND ISOLATED JEWISH COMMUNITIES

Steve Klein, Instructor, Tel Aviv University,
Haaretz English Edition Senior Editor

Session I: Wednesdays, April 7–28

Session II: Wednesdays, May 5–26

1:30–3 p.m. ET

Mainstream Jewry has encountered communities spanning Asia, Africa and the Americas claiming to belong to the Jewish people or to be descendants of lost Israelite tribes for centuries. Who are these groups, how did they get “lost” or become isolated from the rest of known Jewry, and why have their claims been accepted or rejected? Session I will explore communities whose connection to the Jewish people was recognized pre-WWI (e.g., Samaritans, Beta Israel, Bene Israel). Session II will explore communities which have sought recognition post-WWI (e.g., Bene Menashe, Abayudaya, Bnei Anousim). Students may register for one or both 4-week sessions.

Member cost per 4-week session: \$66

Nonmember cost per 4-week session: \$81

BLOOD LIBEL: A LIE STILL BLEEDING

Bruce Ogron, Attorney and Instructor of Lifelong Learning

Thursdays, April 8–29

7–8:30 p.m. ET

Also known as, Ritual Murder, the Blood Libel is a centuries-old anti-Semitic canard, which alleges Jews use the blood of Christian children in the baking of matzah. This malicious fabrication, which has been used to sow the seeds of systemic hatred, first appeared in medieval England before spreading its vile throughout Europe, Czarist Russia and eventually into the United States. In this course, we will examine the reasons this vicious lie has perpetuated and thrived for nearly one thousand years by studying the more significant cases of this enduring evil fiction.

Member cost: \$66

Nonmember cost: \$81

WHOLE IN ONE: BOOK OF WISDOM AND WANDERING

Mondays, April 19–June 7 (no class May 17, 31)

10 a.m.–noon ET or 7–9 p.m. ET

This final module of the Whole In One Program will cover Psalms, Proverbs, Job, Daniel, Ezra, Nehemiah, and Chronicles taught by a different master teacher each week.

Member cost: \$83

Nonmember cost: \$102

SECOND LOOK AT THE BOOK

GENESIS: LIVING IN BETWEEN THE DICHOTOMIES

Rosette Barron Haim, Rabbi

Wednesdays, April 21–May 12

10 a.m.–noon ET

The book of Genesis presents some of the most vivid characters and strongest personalities in the whole of the Hebrew Bible. We will look at how the lives of our Biblical ancestors reveal their strengths and weaknesses and we will glean lessons to shape our responses to contemporary issues.

Member cost: \$66

Nonmember cost: \$81

SECOND LOOK AT THE BOOK

THE BOOK OF DANIEL: COPING WITH CRISIS

Jo Bruce, Instructor of Lifelong Learning

Wednesdays, April 21–May 12

6:30–8:30 p.m. ET

The book of Daniel contains dramatic stories and fantastical visions making it one of the most exciting books to study. We will examine how this ancient text resonates so strongly with our modern experiences.

Member Cost: \$66

Nonmember Cost: \$81

IS JUDAISM A RELIGION OR A POLITICS?:

BEING JEWISH IN THE MODERN WORLD

David Starr, Research Associate, Tauber Institute for the Study of European Jewry, Brandeis University

Thursdays, April 22–May 13

3:30–5 p.m. ET

Are Jews a religion or a people? Some Jews (and non-Jews) believed that Judaism was a modern religion like Protestantism; others thought Judaism was political and national. This course considers this argument as it played out against the momentous changes in political and social life in the past three hundred years.

Member Cost: \$66

Nonmember Cost: \$81

MISSING NARRATIVES OF FORCED LABORERS DURING THE THIRD REICH

Donna Rumenik, Instructor of Lifelong Learning

Tuesdays, May 4–25
10 a.m.–noon ET

Millions of men, women, and children were put into forced labor to benefit industry and agriculture in Hitler's Germany and the occupied territories. From recruitment to roundups, this course will cover the brutal living and working conditions of those who were forced laborers. Victim accounts and diaries, letters, trial testimonies, and government documents will be used.

Member Cost: \$66
Nonmember Cost: \$81

JEWISH AMERICAN SHORT STORIES

Anthony Wexler, Full-Time Lecturer, CWRU

Thursdays, May 13–June 3
1:30–3 p.m. ET

Telling stories has been an integral part of Jewish life, from the tales that make up the Hebrew Bible to those about contemporary Jewish experiences. Jews have long used the short story to organize and understand the world and their place within it. In this short seminar, we'll focus on stories written by Jewish-American authors since 1945. We'll examine how Jews have used the story to wrestle with faith, assimilation, the legacy of the Holocaust, and the construction of Jewish-American identities. Possible stories include: Bernard Malamud's "The Magic Barrel" and "Angel Levine"; Saul Bellow's "The Old System"; Grace Paley's "The Loudest Voice" and "Goodbye and Good Luck"; Philip Roth's "The Conversion of the Jews"; Allegra Goodman's "The Art Biz"; and Nathan Englander's "What We Talk About When We Talk About Anne Frank."

Member Cost: \$66
Nonmember Cost: \$81

JEWISH INFLUENCERS OF THE AMERICAN CULTURAL EXPERIENCE: LIGHTS, CAMERA, CUE THE MUSIC

Sarah Sager, Cantor Laureate of Anshe Chesed-Fairmount Temple

Tuesdays, May 18–June 8
1:30–3 p.m. ET

Join Sarah Sager as she leads a brief look at some of the cultural icons who have shaped American music, stage and film including Leonard Bernstein, Neil Simon, Steven Spielberg, and Steven Sondheim among others.

Member Cost: \$66
Nonmember Cost: \$81

SECOND LOOK AT THE BOOK EXODUS: FROM PEOPLE TO A PEOPLE

Kyla Schneider, Instructor of Lifelong Learning

Wednesdays, May 19–June 9
10–11:30 a.m. ET

The dramatic book of Exodus follows the Israelite journey from slavery to freedom. This course will give you a chance to take a complex look at what feels like a very familiar story.

Member Cost: \$66
Nonmember Cost: \$81

ANTI-SEMITISM IN CLASSICAL ENGLISH LITERATURE: THE PORTRAYAL OF SHYLOCK; FAGIN AND SVENGALI

Bruce Ogron, Attorney and Instructor of Lifelong Learning

Thursdays, June 3–24
7–8:30 p.m. ET

The Merchant of Venice, *Oliver Twist* and *Trilby* are English literary classics, which have stood the test of time. Each work's lasting relevance is due, in large part, to the influence of its leading Jewish character. In fact, the characters have become so synonymous with their Jewishness, that their names are part of modern anti-Semitic vernacular. In this class, we will study the portrayal of these characters – Shylock, Fagin and Svengali – while examining how and why numerous anti-Semitic tropes thrive and endure.

Member Cost: \$66
Nonmember Cost: \$81

GREAT SINGERS OF THE PAST

Larry Josefovitz, Cantor and Instructor of Lifelong Learning

Wednesdays, June 9–30
1–3 p.m. ET

A survey of the outstanding classical singers who flourished from the dawn of the recording era to the birth of the LP. Prior to the era of the Three Tenors, which made big money from few artists, there was a proliferation of great singing in every voice category. Explore echoes of 19th century fame, such as Francesco Tamagno, Verdi's first Otello, and his successor Enrico Caruso, who changed tenor singing for a century.

Member Cost: \$66
Nonmember Cost: \$81

Literature and Writing

JANE AUSTEN: THE VELVET STEAMROLLER

Paula Kalamaras, Instructor of Lifelong Learning

Mondays, April 5–May 24
10–11:30 a.m. ET

For many, Jane Austen's novels helped to define the Regency period. Her plots often explore the dependence of women on marriage to gain social standing and economic security and her major novels were a comment on the British landed gentry at the end of the 18th century. What characterizes her work more than anything, though, is her biting wit and keen characterizations which have delighted readers for centuries.

Read: *Northanger Abbey, Persuasion, Pride and Prejudice*, Jane Austen

Member Cost: \$90
Nonmember Cost: \$105

This course is offered with the generous support of the Association for Continuing Education (ACE).

A JOURNEY INTO THE ODYSSEY

Paola Basile, Professor of Italian and French, Lake Erie College

Tuesdays, April 6–May 11
4–5:30 p.m. ET

Homer's *Odyssey* is one of the oldest masterpieces of world literature and its influence extends beyond the confines of a specific discipline or time period. We will analyze and discuss this epic poem, which is made up of 24 books. We will also delve into related topics such as Odysseus' voyage and adventures; the Greek concepts of challenge, honor, heroism and otherness; and the conflicting concepts of death v. memory v. fame and of poetry v. history v. mythology.

Read: Suggested translation: *The Odyssey* by Homer, Robert Fitzgerald (Translator)

Member Cost: \$99
Nonmember Cost: \$119

 [Revisiting the Classics](#)

THE WISDOM OF CHILDREN'S LITERATURE

Paula Kalamaras, Instructor of Lifelong Learning

Wednesdays, April 7–May 26
10–11:30 a.m. ET

In this course we will explore the enduring importance of children's literature with Jonathan Cott's essays and interviews of such luminaries as Dr. Seuss, Maurice Sendak, Astrid Lingstrom, William Steig, Chinua Achebe and others, then reflect on more contemporary children's authors such as Neil Gaiman. We will also read selected examples of outstanding children's literature.

Read: *Pipers at the Gates of Dawn: The Wisdom of Children's Literature*, Jonathan Cott

Member Cost: \$90
Nonmember Cost: \$105

This course is offered with the generous support of the Association for Continuing Education (ACE).

GRAPHIC MEMOIRS: TELLING OUR STORIES THROUGH PICTURE AND WORD

Mary Assad, Lecturer, English, CWRU

Fridays, April 9–May 14
10:30 a.m.–noon ET

Distinct from their purely textual counterparts, graphic memoirs interweave words with emotive and purposeful illustrations to tell the story of the author's life. We will read two such books to examine how the combination of words and images, as well as the interplay between the personal and the historical invite the reader both to witness and empathize with the author's experiences. We will discuss the impact and relevance of themes such as political upheaval, familial and romantic relationships, and the tensions and possibilities inherent within the journey between cultures. How is each author's story unique, how is it universal, and what can it teach us about our own identities and experiences?

Read: *Persepolis: The Story of a Childhood*, Marjane Satrapi; *The Best We Could Do: An Illustrated Memoir*, Thi Bui

Member Cost: \$99
Nonmember Cost: \$119

THE MODERN AMERICAN PLAY

Donald Carrier, Director, CWRU/CPH MFA Acting Program

Fridays, April 9–May 14
1–2:30 p.m. ET

In the early part of the 20th century, American drama fell into distinct categories of melodrama, sentimental comedies, or the modern incarnation of the morality play. The 1930's ushered a shift into realism allowing a number of writers to explore the human condition aided by the integration of contemporary acting methods and visionary directors. In this course, we will look at plays that were instrumental in moving the art forward. While these writers are stylistically very different, they bring a sensibility that is unique to the time and place and a current social construct.

Read: *Long Day's Journey into Night*, Eugene O'Neill; *The Little Foxes*, Lillian Hellman; *Death of a Salesman*, Arthur Miller; *A Streetcar Named Desire*, Tennessee Williams; *The Glass Menagerie*, Tennessee Williams; *A Raisin In the Sun*, Lorraine Hansberry; and *Trouble in Mind*, Alice Childress.

Member Cost: \$99
Nonmember Cost: \$119

[Revisiting the Classics](#)

THE ORESTEIA BY AESCHYLUS

Janice Vitullo, Instructor of Lifelong Learning

Mondays, April 12–26
1–2:30 p.m. ET

This course will comprise a close reading and discussion of Aeschylus' trilogy the *Oresteia* (*Agamemnon*, *The Libation Bearers*, *The Eumenides*). Aeschylus, known as the father of Greek tragedy, wrote the *Oresteia*, our only extant ancient Greek trilogy, in an effort to offer an explanation of how a system of blood feud and revenge needed to be and was replaced by a system of law. His topic is sweepingly broad and his characters larger than life.

Read: *Aeschylus: The Oresteia*, translated by Robert Eagles. As this translation will be heavily referenced during class, students are urged not to purchase a different one.

Member Cost: \$50
Nonmember Cost: \$60

[Revisiting the Classics](#)

WILLIAM FAULKNER'S SOUTHERN GOTHIC

Monica Carol Miller, Assistant Professor, Department of English, Middle Georgia State University

Wednesdays, April 28–June 2
1–2:30 p.m. ET

The Nobel and Pulitzer Prize-winning work of William Faulkner is considered to be some of the most beautifully-crafted prose in the English language. In this course, we will read two of his most celebrated novels, *As I Lay Dying* (1930) and *Absalom! Absalom!* (1936), both exemplifying Faulkner's modernist prose set in the fictional "postage stamp" south of Yoknapatawpha, Mississippi. As we read, we'll consider not only the brilliant craft of his work but also the historical and cultural contexts in which they were written.

Read: *As I Lay Dying*, William Faulkner and *Absalom! Absalom!*, William Faulkner

Member Cost: \$99
Nonmember Cost: \$119

[Revisiting the Classics](#)

AMERICAN BLOOMSBURY: THE WRITERS OF AMERICA'S FIRST LITERARY COMMUNITY

Angela Fasick, Instructor of Lifelong Learning

Thursdays, May 6–June 24
10–11:30 a.m. ET

While American literary history didn't begin in the 1850s in Concord, Massachusetts, it certainly blossomed there. This small town an hour west of Boston was home to a band of writers whose works still resonate with modern readers. In this course, we will read Susan Cheever's *American Bloomsbury* and examine the way the writers in this group challenged, influenced, and ultimately bettered one another. We'll also read a selection of each author's work in full.

Read: *American Bloomsbury: Louisa May Alcott, Ralph Waldo Emerson, Margaret Fuller, Nathaniel Hawthorne, and Henry David Thoreau: Their Lives, Their Loves, Their Work*, Susan Cheever

Member Cost: \$132
Nonmember Cost: \$162

[Revisiting the Classics](#)

WILL'S WILLFUL WOMEN

Barbara Burgess-Van Aken, SAGES Fellow, English, CWRU

Tuesdays, May 11–June 1
noon–1:30 p.m. ET

Given that he wrote in an era of entrenched patriarchy, do Shakespeare's plays reveal any pro-feminist sentiments? If so, did his representations of strong female characters change as his writing matured? And is there a relationship between Shakespeare's choice of genre and the ways he gives power to his women? Although we will discuss Shakespeare's willful female characters from a range of his works, our chief explorations will focus on four plays (two comedies, a romance, and a tragedy): *Love's Labour's Lost* (1597), *Much Ado about Nothing* (1599), *Macbeth* (1606), and *The Winter's Tale* (1611).

The Folger Library editions by Simon and Schuster are recommended.

Member Cost: \$66

Nonmember Cost: \$88

 [Revisiting the Classics](#)

SOPHOCLES: THE THEBAN CYCLE

Janice Vitullo, Instructor of Lifelong Learning

Wednesdays, May 12–26
10–11:30 a.m. ET

Sophocles, one of the greatest of the Greek tragedians, gives us three plays popular in ancient Athens and still relevant today. Join us for a close reading and discussion of *Oedipus Rex*, *Antigone*, and *Oedipus at Colonus*. Major themes to be examined are the desire for truth at any cost, civil disobedience and a search for identity.

Read: *Sophocles: The Three Theban Plays*, translated by Robert Fagles. As this translation will be heavily referenced during class, students are urged not to purchase a different one.

Member Cost: \$50

Nonmember Cost: \$60

 [Revisiting the Classics](#)

THE WILD MAN WITHIN AND WITHOUT

James Newlin, Lecturer, English, CWRU

Tuesdays, June 22–July 27
1–2:30 p.m. ET

There have always been myths about "The Wild Man," that figure who exists outside of society, as a kind of living rebuttal to the values of the "civilized" world. These stories are rich social documents that illuminate how a culture defines itself in relation to those that it excludes or fears. Whether these myths present wild men as heretics, lunatics, or "noble savages," they exist to tell us something about ourselves and about our animal nature. They also provide a way of understanding, and all too often demonizing, the other. We will consider myths of wildness across literary history, from the "green men" of Arthurian legend to early colonialist accounts of indigenous peoples to recent portrayals of madmen in contemporary film.

Read: Armitage, Simon, translator. *Sir Gawain and the Green Knight*; Shakespeare, William. *The Tempest*. (Arden Third Edition (Revised), eds. Virginia Mason Vaughan and Alden T. Vaughn)

Member Cost: \$99

Nonmember Cost: \$119

 [Revisiting the Classics](#)

Philosophy and Religion**THE ENLIGHTENMENT: THE SEARCH FOR A SECULAR MORALITY**

Charlene Mileti, Instructor of Lifelong Learning

Thursdays, April 8–May 27
10–11:30 a.m. ET

In the 17th and 18th centuries, the goal of many philosophers, writers, political scholars and scientists was to establish 'reason' as man's defining feature. They believed that only rational investigation could reveal the truths of man, nature and the cosmos. For them, man would never be free unless critical thought and investigation became dominant in all areas of knowledge. Religion, especially Christianity, did not escape scrutiny either. The legitimacy of religious texts and doctrines were thrown into profound doubt. However, there remained one lingering problem: Without the rules of religion, how will a citizen know how to act toward others in a free society? This course surveys ethical and moral theories of the Enlightenment and how those same theories remain influential in today's growing secular world.

Read: *The Crisis of the European Mind*, Paul Hazard

Member Cost: \$90

Nonmember Cost: \$105

This course is offered with the generous support of the Association for Continuing Education (ACE).

COURSES

Politics and Contemporary Issues

EIGHT LANDMARK CASES OF THE U.S. SUPREME COURT

Barbara Greenberg, Instructor of Lifelong Learning

Tuesdays, April 6–May 25

10:30 a.m.– noon ET

Since 1803, the United States Supreme Court has heard thousands of cases. This course will focus on one landmark case each week from one of the following topics: religious beliefs regarding conscientious objector status; abortion rights; immigration and racial discrimination; free speech; the mandate for universal health care; right to die issues; freedom of the press; the right to a fair trial; and technology and cell phone privacy rights. We will review precedent cases on topic, facts of the case at hand, and these landmark opinions that establish the laws of our country. Please note: This course will not include cases discussed in the previous course of this title.

Member Cost: \$90

Nonmember Cost: \$105

This course is offered with the generous support of the Association for Continuing Education (ACE).

THE FOUNDATIONS OF CITIZENSHIP

Patrick Moore, Instructor of Lifelong Learning

Wednesdays, April 7–May 26

1:30– 3 p.m. ET

In this course we will review the foundations of U.S. citizenship and how our founders expected us, the American people and public officials, to properly fulfill our role as citizens. We will read the Declaration of Independence and the Constitution, as well as selected Federalist Papers as our starting point. Case studies on gerrymandering and the Citizens United decision will focus us on the present. Material will include the Declaration of Independence, U.S. Constitution, selected constitutional amendments; selected articles.

Member Cost: \$90

Nonmember Cost: \$105

This course is offered with the generous support of the Association for Continuing Education (ACE).



CRISIS AND CONFLICT IN AMERICAN HISTORY

Earl Leiken, Instructor of Lifelong Learning

Fridays, April 9–May 28

10–11:30 a.m. ET

We are experiencing a major crisis and conflict in our country's political life with highly polarized political parties and voters. However, the country has experienced this in the past and this course will discuss those conflicts and how they were resolved. These conflicts include the battle over the approval of the Constitution; the long political struggle over the future of slavery; reconstruction, Jim Crow and the rise and fall of the Ku Klux Klan; the Gilded Age and its growing economic disparities (similar to our own era) and the response of the progressive movement; FDR's struggles with the Republican party and the Supreme Court in enacting the New Deal during the depression; the black list and the rise and fall of McCarthyism; and the battle over civil rights legislation in the 1960s.

Read: *The Soul of America: The Battle for Our Better Angels*, Jon Meacham

Member Cost: \$90

Nonmember Cost: \$105

The course is offered with the generous support of the Association for Continuing Education (ACE).

INTERSECTING PANDEMICS: THE OPIOID CRISIS & COVID-19

This live webinar series brings together researchers, social scientists, clinicians, and providers working in various areas of opioid crisis intervention in Ohio to learn about how COVID-19 is impacting the opioid epidemic and what programs and initiatives are being created to combat the intersection of two public health crises.

Free and open to the community. CEU's pending.

Please Note: Each webinar includes a full panel of leading experts.

THE STATE OF AFFAIRS

David Stroom, MD

Chair of Opioid Consortium and Lutheran Cleveland Clinic Hospital's Chief of Psychiatry and Medical Director of the Alcohol and Drug Recovery Center

Tuesday, April 6 | 10 a.m.–noon ET

This webinar will examine the opioid overdose data in Ohio since the beginning of the COVID-19 pandemic and highlight interdisciplinary and cohesive public health approaches to mitigating the damage of these intersecting crises.

TREATMENT AND COMMUNITY INTERVENTIONS FOR OPIOID USE DISORDER

Lulu Zhao, MD

Assistant Professor of Reproductive Biology and Clinical Assistant Professor of Psychiatry, Case Western Reserve University School of Medicine, Attending Physician, Department of OB/GYN-General OB/GYN University Hospitals Cleveland Medical Center

Tuesday, April 13 | 10 a.m.–noon ET

This webinar will focus on how COVID-19 has impacted providing substance use treatment to vulnerable populations, such as mothers with opioid use disorder, and how programs across the state of Ohio are adapting to address these challenges.

For a complete listing of panelists and registration, please visit case.edu/lifelonglearning/lectures/addiction or contact Sheryl Hirsh at sheryl.hirsh@case.edu or 216.368.2091.

HEALTHCARE, TREATMENT AND COMMUNITY INTERVENTIONS

David Pon

The Center for Health Care Services, San Antonio Texas

Tuesday, April 20 | 10 a.m.–noon ET

This webinar will showcase the work of interdisciplinary, collaborative public health initiatives that are making substantial interventions into the drug overdose epidemic.

CRIMINAL JUSTICE REFORM

Lisa Fair

External Forensic Coordinator, Expanding Medication-Assisted Treatment Program (ExAM Program), Cuyahoga County Corrections Center and MetroHealth Office of Opioid Safety

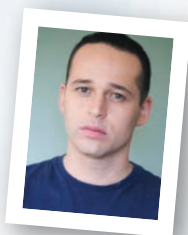
Tuesday, April 27 | 10 a.m.–noon ET

This webinar will discuss how COVID-19 has affected individuals incarcerated for substance use in the Cuyahoga County jail, and what changes are needed to ensure their safety and continued access to treatment.

ISRAELI SPEAKER SERIES

Siegal Lifelong Learning is offering a remote speaker series with well-known Israeli authors, journalists, and television and film writers.

Members of Lifelong Learning: Free | Nonmembers: \$5



RON LESHEM,
TV AND FILM WRITER BEST
KNOWN FOR *EUPHORIA*

The Making of an
HBO Power Drama: Valley of Tears

Tuesday, April 20
11:00 a.m. ET

An Informal Hebrew
Discussion with Ron Leshem

Thursday, April 22
12:30 p.m. ET



MEIR SHALEV,
NOVELIST AND NEWSPAPER
COLUMNIST FOR THE DAILY
YEDIOTH AHRONOTH

First Loves in the Bible

Tuesday, May 4
11:00 a.m. ET

An Informal Hebrew
Discussion with Meir Shalev

Tuesday, May 4
12:30 p.m. ET



AYELET GUNDAR GOSHEN,
ISRAELI NOVELIST

Love in the Time of Corona or
Literature and Catastrophe

Tuesday, June 15
11:00 a.m. ET

An Informal Hebrew Conversation
with Ayelet Gundar Goshen

Wednesday, June 16
12:30 p.m. ET

This lecture is supported by the Herbert and Marianna Luxenberg Siegal College Israel Lecture Fund of the Jewish Federation of Cleveland.

The series is offered in partnership with the Cleveland Israel Arts Connection a program of the Jewish Federation of Cleveland.

During this unique program, community members engage with leading scholars to investigate rapidly developing areas of origins science. Each evening begins with a presentation by a world-class researcher, followed by open discussion.

This year's topics will include black holes, oxygen availability, CRISPR, climate change and the Lake Erie hydroclimate.

Tuesday, April 20–June 1

More information coming soon at
case.edu/lifelonglearning/origins-science-scholars

ORIGINS SCIENCE SCHOLARS

The Origins Science Scholars Program is presented by Siegal Lifelong Learning and the Institute for the Science of Origins (ISO), a partnership of several Northeast Ohio research and educational institutions, led by Case Western Reserve University.

SINGLE LECTURES & EVENTS

*Unless otherwise noted, lectures run between 60 and 90 minutes.

THE WIFE THE BUDDHA LEFT BEHIND

Vanessa R. Sasson, Professor, Religious Studies,
Marianopolis College

Friday, April 2 | 12–1:30 p.m. ET

The story of the Buddha's life is known all over the world. So the story goes, he was a prince of a small kingdom, destined to one day take the throne. But after a moment of insight, he decided to leave worldly ambitions aside. Thus, did he begin his quest towards awakening. What is rarely considered, however, is the fact that his wife was left behind. A number of early hagiographical sources give voice to her pain and sadness, as she finds herself abandoned with a newborn by a man she had been married to for lifetimes (so the texts claim). In this talk, Sasson explores Yasodhara's story and will read an excerpt from her novel, *Yasodhara and the Buddha* (Bloomsbury, 2021).

Member Cost: \$5 | Nonmember Cost: \$10

LEONARD COHEN, UNTOLD STORIES: THE EARLY YEARS

Michael Posner, Author

Tuesday, April 13 | 7 p.m. ET

Join Michael Posner, bestselling author and biographer, as he draws on hundreds of interviews to reach beyond the Cohen of myth and reveals the unique, complex, and compelling figure of the real man.

Member Cost: \$5 | Nonmember Cost: \$10

EASTSIDE CONVERSATIONS

GETTING OUT AND STAYING OUT, RE-ENTRY AND RECIDIVISM

Brandon Edwin Chrostowski, Founder/CEO/Owner, Edwins Leadership & Restaurant Institute

Friday, April 16 | noon–1 p.m. ET

Brandon Edwin Chrostowski is on a mission to change the face of re-entry into society following incarceration. Based on the principle that every human being, regardless of their past, has the right to a fair and equal future, EDWINS arms their students with training in culinary arts and the hospitality industry. In addition, EDWINS helps in finding employment, free housing, basic medical care, clothing, job coaching, literacy programs and more.

Member Cost: \$5 | Nonmember Cost: \$10

CONVERSATION WITH AUTHOR AND PROFESSOR PAULA GIDDINGS

Paula Giddings, Elizabeth A. Woodson 1922 Professor
Emerita of Africana Studies, Smith College

Friday, April 16 | 4 p.m. ET

Professor Paula Giddings, known for her writings on the complicated history of Black women in America, will answer your questions about her scholarship, advocacy, and books, including *When and Where I Enter* and *A Sword Among Lions: Ida B. Wells and the Campaign Against Lynching*. This program will include Q&A moderated by Emmy award-winning journalist, Sia Nyorkor, Channel 19 News.

Free and open to the public.

Cosponsored by League of Women Voters and Delta Sigma Theta Sorority

ACE BOOK DISCUSSION DAY

John McBratney, Chairperson and Professor,
English Department, John Carroll University

Monday, April 19 | 1–3 p.m. ET

The Association for Continuing Education has chosen *On Earth We're Briefly Gorgeous* by Ocean Vuong as the book for common reading for Book Discussion Day. Read this award-winning novel then hear Professor John McBratney's lecture. Although this event will be presented as a webinar, participants will be able to ask questions in the Q&A portion of the talk.

ACE Member Cost: Free | Nonmember Cost: \$10

This lecture is offered by the Association for Continuing Education (ACE)

ORTHODOX AND OTHER JEWS IN AMERICAN POLITICS: A GROWING DIVERGENCE

Joshua Shanes, Associate Professor of Jewish Studies
and Director of the Arnold Center for Israel Studies at
College of Charleston

Monday, April 19 | 7 p.m. ET

Decades ago, Milton Himmelfarb quipped that American Jews tends to "earn like Episcopalians but vote like Puerto Ricans"; that is, they remain liberal despite achieving economic success. While that has broadly continued in the age of Trump, a new trend has grown clear. Orthodox Jews today swing sharply right, even when they earn poorly, while non-Orthodox Jews have grown even more committed to liberal values. This lecture explains this emerging divergence in the context of broader American trends – what I call an "evangelicalization of Orthodoxy" – as well as the role of Jewish politics as a debate about the meaning of Jewishness itself.

Member Cost: \$5 | Nonmember Cost: \$10

SINGLE LECTURES & EVENTS

HOW TO ANSWER A “FOOL”

Christine Hayes, Robert F. and Patricia Ross Weis Professor of Religious Studies in Classical Judaica at Yale University

Thursday, April 22 | 7 p.m. ET

What is the best way to engage with those who appear to us to be ignorant or wicked? What can biblical and rabbinic debates over the duty, utility, and virtue of answering a “fool” teach us about the possibilities and limitations of the disappearing art of civil discourse.

Member Cost: \$5 | Nonmember Cost: \$10

This program is part of the Association of Jewish Studies Distinguished Lecture Series

“Sandusky” traditions, these late precontact groups thrived along the rivers and lakeshore of northern Ohio then apparently left the area virtually unoccupied for almost a century. Who were these people? Where did they go? Why did they leave? Who did they become at the dawn of written history? This presentation will discuss the archaeological and ethnohistorical evidence bearing on these questions and offer some hypotheses as to the ultimate fate of the last indigenous people of northern Ohio.

Free and open to the public

This lecture is part of the Cleveland Civics History Series and offering in partnership with the League of Women Voters and Cleveland History Center

WHAT HAPPENED TO THE WHITTLESEY? AND OTHER TALES OF NORTHERN OHIO PRECONTACT ARCHAEOLOGY

Brian G. Redmond, Curator and John Otis Hower Chair of Archaeology, CMNH

Thursday, April 22 | 7 p.m. ET

One of the most interesting problems for those who study the archaeology of northern Ohio has to do with the apparent out-migration of Native American societies after A.D. 1650. Known to archaeologists as the “Whittlesey” and

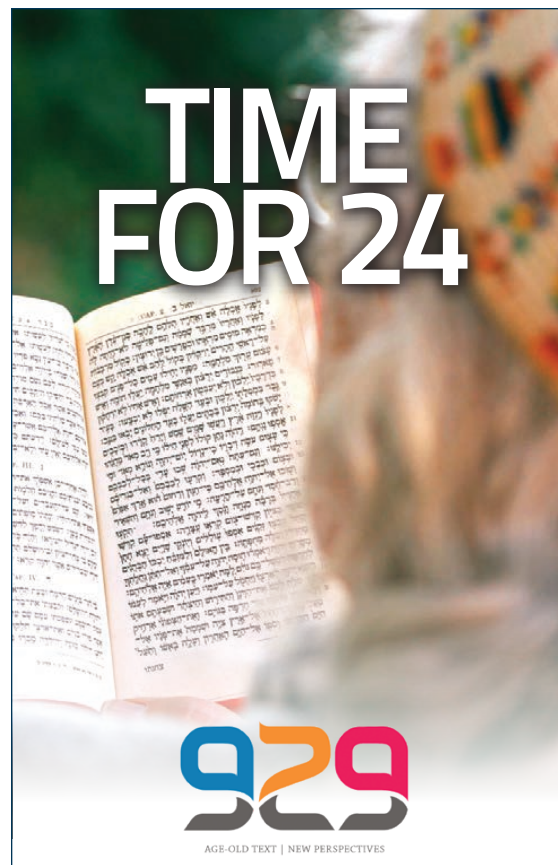
AFTER CLASS: THE MUSIC OF LEONARD COHEN

Gila Silverman, Director of Jewish Lifelong Learning, Siegal Lifelong Learning, CWRU

Monday, April 26 | 1:30–3 p.m. ET

A casual conversation with Gila Silverman, Director of Jewish Lifelong Learning, dedicated to further discussion of a book or topic featured in a recent Jewish Studies course or lecture.

Registration is free, but space is limited.



Explore new perspectives on age-old texts with internationally renowned scholars presenting remote lectures for each of the 24 books of the Jewish Bible.

Siegal Lifelong Learning, in partnership with 929 English, the global Tanakh-study platform, is pleased to offer an exciting initiative to explore each book in the Hebrew Bible, Tanakh.

The diverse array of presenters will each provide unique insight and thought-provoking ideas on their chosen book. Instructors will include Adam Mintz, Shira Hecht-Koller, Ruby Namdar, Shai Secunda, Aaron Koller, Erica Brown, Rachel Sharansky Danziger, and more.

This program began in February. Lectures continue to meet on Tuesday and Thursdays through May 13. 12:30–1:30 p.m. ET

For detail and registration, visit:
case.edu/lifelonglearning/lectures/24

WHAT'S NEW IN THE BIBLE

Alison L. Joseph with moderator: Deborah Dash Moore, Editor of The Posen Library of Jewish Civilization and Culture and Biblical Scholar; Dash Moore: former director of the Frankel Center for Judaic Studies and a Frederick G.L. Huetwell Professor of History and Judaic Studies at the University of Michigan

Wednesday, April 28 | 4–5:30 p.m. ET

For two thousand years, Jews and Christians have been reading the Hebrew Bible. Are there new ways to read it in the 21st century? To uncover what's new in this ancient document, join Alison Joseph, in conversation with Deborah Dash Moore, as they discuss what can be learned about the Torah laws when you set them alongside non-biblical legal documents of the period? How does reading Miriam's song next to Deborah's song change how we understand these pieces of poetry? What can artifacts of this period show us about daily life in ancient Israel—its religious practices, household tasks, architecture, and art? Explore how we can read the Bible today in relation to the development of Judaism from ancient times to the present.

Free and open to the public.

This lecture is in partnership with the Posen Library of Jewish Culture and Civilization

A RESTLESS SEEKER: THE LIFE AND THOUGHT OF RABBI LORD JONATHAN SACKS

Raphael Zarum, Dean of London School of Jewish Studies

Monday, May 3 | noon–1:30 p.m. ET

Join Rabbi Dr. Raphael Zarum to honor the memory of Lord Jonathan Sacks, former chief rabbi of the United Kingdom and one of the most influential Jewish thinkers of our time. As we mark 6 months since his death, Zarum, who received rabbinic ordination from Rabbi Lord Sacks, will draw on his personal experiences and interactions, to show how "Rabbi Sacks, more than any rabbi I know, spoke to our generation."

Member Cost: Free | Nonmember Cost: \$5

AN EVENING WITH MACHIAVELLI: ETHICS, POLITICS, AND AESTHETICS IN *THE PRINCE*

Kristin Stasiowski, Assistant Dean, International Programs and Education Abroad, Assistant Professor, Italian Language and Literature, Kent State University

Wednesday, May 5 | 7–8:30 p.m. ET

The Jesuits labeled him "the devil's partner in crime," Frederick the Great of Prussia called him "a monster"

who wished to destroy humanity, and his name appears frequently in the plays of Shakespeare in reference to nefarious and murderous characters. Vilified and demonized almost immediately after the publication of his book, the very name Machiavelli has divided readers and critics. This seminar will introduce students to the historical figure of Niccolò Machiavelli through an in-depth discussion of the intellectual, historical, and political contexts into which *The Prince* was published. We will introduce readers to the major themes of *The Prince* against the backdrop of the historical reality of the political and philosophical climate of 15th and 16th century Florence in the aim of unraveling the complex mystery and mythology surrounding this towering figure of Renaissance thought.

Member Cost: \$5 | Nonmember Cost: \$10

2020 NOBEL PRIZE IN CHEMISTRY: CRISPR AND GENOME EDITING

Ron Conlon, Associate Professor, Department of Genetics and Genome Sciences, School of Medicine, CWRU

Friday, May 14 | noon–1:30 p.m. ET

The Nobel Prize in Chemistry 2020 was awarded jointly to Emmanuelle Charpentier and Jennifer A. Doudna "for the development of a method for genome editing." Charpentier and Doudna discovered the CRISPR/Cas9 genetic scissors. Using these, researchers can change the DNA of animals, plants and microorganisms with extremely high precision. Dr. Conlon will discuss the development and usage of CRISPR, as well as some of the ethical considerations of this tool.

Member Cost: \$5 | Nonmember Cost: \$10

BUDGETS, BOYCOTTS, AND BABIES: JEWISH WOMEN IN THE GREAT DEPRESSION

Beth Wenger, Moritz and Josephine Berg Professor of History Associate Dean of Graduate Studies, School of Arts and Sciences

Thursday, May 20 | 7 p.m. ET

The Great Depression presented Jewish women with a unique set of challenges and choices. In response, Jewish women found new survival strategies to cope with the difficult economic conditions and changing family dynamics of these turbulent years.

Member Cost: \$5 | Nonmember Cost: \$10

This program is part of the Association of Jewish Studies Distinguished Lecture Series

SINGLE LECTURES & EVENTS

Single Lectures & Events

18

EASTSIDE CONVERSATIONS

DESIGNING A BETTER CLEVELAND: WHAT'S NEXT?

Steven Litt, Art and Architecture Critic, The Plain Dealer, Cleveland.com

Friday, May 21 | noon–1 p.m. ET

From the Group Plan to the Terminal Tower, Urban Renewal, and University Circle, Cleveland's history is full of attempts at building a better community. In a mayoral election year, amid a pandemic and the aftermath of the Trump Administration, what lies ahead for Cleveland and Northeast Ohio in architecture, urban design and city and regional planning? We'll discuss big projects, big bets, inflection points, and trends that will shape the future of the city and the region.

Member Cost: \$5 | Nonmember Cost: \$10



AFTER CLASS: WHAT'S NEW IN THE BIBLE

Gila Silverman, Director of Jewish Lifelong Learning, Siegal Lifelong Learning, CWRU

Monday, May 24 | 1:30–3 p.m. ET

A casual conversation with Gila Silverman, Director of Jewish Lifelong Learning, dedicated to further discussion of a book or topic featured in a recent Jewish Studies course or lecture.

Registration is free, but space is limited.

2020 NOBEL PEACE PRIZE: THE WORLD FOOD PROGRAMME

Darcy Freedman, Swetland Professor in Environmental Health Sciences; Director, Mary Ann Swetland Center for Environmental Health; Professor, Department of Population and Quantitative Health Sciences, School of Medicine, CWRU

Friday, June 11 | noon–1:30 p.m. ET

The 2020 Nobel Peace Prize was awarded to World Food Programme (WFP) "for its efforts to combat hunger, for its contribution to bettering conditions for peace in conflict-affected areas and for acting as a driving force in efforts to prevent the use of hunger as a weapon of war and conflict." As the world's largest humanitarian organization addressing hunger and promoting food security, the WFP is the United Nation's program focused on eradicating acute hunger and food insecurity. Dr. Freedman will discuss the WFP as well as food insecurity in our local community.

Member Cost: \$5 | Nonmember Cost: \$10

EASTSIDE CONVERSATIONS

LESSONS FROM MY PARENTS' BASEMENT: LEARNING HISTORY FROM FAMILY HEIRLOOMS

Gila Silverman, Director of Jewish Lifelong Learning, Siegal Lifelong Learning, CWRU

Friday, June 18 | noon–1 p.m. ET

Letters from a navy soldier killed in the Pacific during WWII, photos of Israel's first Independence Day parade, a commemorative ashtray from a 1961 Jewish Federation fundraiser, a half-finished weaving of Hebrew letters, Yiddish letters wrapped carefully in a white cloth and hidden at the bottom of a box. The objects we find in our homes tell us our family stories. But they also tell us much more than that. They can help us understand our connections to larger histories of immigration and integration, communal and religious change, and shifting cultural norms, and they can help us create a meaningful legacy for future generations.

Member Cost: \$5 | Nonmember Cost: \$10

AFTER CLASS: THE LIAR BY AYELET GUNDAR-GOSHEN

Gila Silverman, Director of Jewish Lifelong Learning, Siegal Lifelong Learning, CWRU

Monday, June 28 | 1:30–3 p.m. ET

A casual conversation with Gila Silverman, Director of Jewish Lifelong Learning, dedicated to further discussion of a book or topic featured in a recent Jewish Studies course or lecture.

Registration is free, but space is limited.

MEMBERSHIP & REGISTRATION

Membership

Siegal Lifelong Learning offers an optional membership model for participants. Membership is valid for a rolling 12-month period. Members receive exclusive discounts, priority registration for some popular events, invitations to members-only events and more. A complete list of membership benefits can be found at case.edu/lifelonglearning/membership. The cost structure for membership is \$40 for the individual or \$70 for member plus one.

Nonmembers may still register for most events and classes, but do not enjoy priority registration or member discounts or benefits. Additional member benefits may be available to participants in the Siegal Lifelong Learning Annual Fund.

Registration Policies

DISCOUNTS

Case Western Reserve University alumni and retirees (faculty and staff) and ACE members are entitled to \$10 off the current membership rate.

FINANCIAL AID

Financial assistance is available. Please contact Siegal Lifelong Learning for information.

WITHDRAWALS AND SUBSTITUTIONS

- A 100% refund will be issued to the registered student if a completed withdrawal request is received prior to five business days before the start date of the class or lecture.
- A 50% refund will be issued for withdrawal requests received on or after five, but prior to three business days before the start date of the class or lecture.
- There is no refund for withdrawal requests received on or after three days prior to the start date of the class or lecture; no exceptions will be made.
- If unable to attend, you may substitute another person at no additional cost; please notify of change or substitution at least one day prior to the start date of the class or lecture.
- Withdrawal requests must come directly from the student or his/her designee; the official receipt date is the day and time the request is received in the Siegal Lifelong Learning office.

CANCELLATIONS

Although Siegal Lifelong Learning is committed to delivering all classes, workshops or lectures that are scheduled, there are times when a class, workshop or lecture is canceled due to minimum enrollment requirements. If Siegal Lifelong Learning cancels a class, a 100% refund is automatically processed for participants who do not choose to transfer to another available class. Lifelong Learning staff will make every attempt to notify participants of cancellations via registration information. Participants may also call 216.368.2090 for cancellations.

REFUNDS

Refunds can be processed using the credit card used at the time of registration and payment. All other forms of payment will be refunded by check from Case Western Reserve University to the student. Please allow three to four weeks for the refund check to be processed and mailed to the address given at the time of registration. If there has been an address change, please provide the corrected address with your withdrawal request.

REGISTRATION FORM

MAIL: Send completed form to address below.

ONLINE: case.edu/lifelonglearning

FAX: Fax form to 216.368.1868

PHONE: 216.368.2090 or 216.368.2091

Name _____ Birth Year _____

Address _____

City _____ State _____ Zip _____

Telephone _____ Email _____

LIST NAME OF COURSE, LECTURE, EVENT OR WORKSHOP BELOW.

Program Name _____ FEE \$ _____

Program Name _____ FEE \$ _____

Program Name _____ FEE \$ _____

Program Name _____ FEE \$ _____

Program Name _____ FEE \$ _____

Program Name _____ FEE \$ _____

ANNUAL MEMBERSHIP FEE
Join before fees increase on July 1.

INDIVIDUAL MEMBER \$40 _____

MEMBER PLUS ONE \$70 _____

Name of Plus One (if applicable) _____

MORE INFORMATION ABOUT MEMBER BENEFITS:
case.edu/lifelonglearning/membership/

Please share your suggestions for future courses or programs.

TOTAL _____

If paying by check, please make payable to
Case Western Reserve University and mail to:

The Laura and Alvin Siegal Lifelong Learning Program
Case Western Reserve University
10900 Euclid Avenue, Thwing Center, Room 153
Cleveland, OH 44106-7116

CREDIT CARD

Mastercard

Visa

Discover

TOTAL \$ _____

Name on Card _____

Exp. (MM/YY) _____

Account No. _____

CVV Code _____



THE LAURA & ALVIN SIEGAL
LIFELONG LEARNING
PROGRAM



THE LAURA & ALVIN SIEGAL
LIFELONG LEARNING
PROGRAM

COURSE AUDIT PROGRAM FOR SENIOR CITIZENS



It's Never Too Late to Go Back to School

This program offers adults ages 65 and older reduced tuition rates for a broad range of courses at CWRU.

FOR MORE INFORMATION, CONTACT: Felicia Westbrooks
SeniorAuditProgram@case.edu | 216.368.2090
case.edu/seniorauditprogram

CONTINUING PROFESSIONAL STUDIES

The Continuing Professional Studies division of Case Western Reserve University-Siegal Lifelong Learning offers certificate programs and boot camps that help participants enhance career opportunities and improve their professional standing.



Data Analytics
Full Stack Coding
Cybersecurity
Facebook Marketing

Tableau
Salesforce
Asana



THE LAURA & ALVIN SIEGAL
LIFELONG LEARNING
PROGRAM

For more information, visit:
case.edu/cps or call **216.368.2090**



THE LAURA & ALVIN SIEGAL
LIFELONG LEARNING
PROGRAM

*Siegal Lifelong Learning Program
Case Western Reserve University
10900 Euclid Avenue
Cleveland, Ohio 44106-7116*

STAYING CONNECTED **LEARNING APART**

Siegal Lifelong Learning will continue to offer all programming in the remote Zoom format at this time.

Please enjoy our wide array of courses and lectures for April, May, and June listed in this catalog including:

ARCHAEOLOGY ♦ ART ♦ MUSIC ♦
HISTORY ♦ JEWISH STUDIES ♦
SCIENCE ♦ LITERATURE ♦ POLITICS

FOR MORE INFORMATION

Visit: case.edu/lifelonglearning
Call: **216.368.2090** or **216.368.2091**

