

In-Person and Remote Learning Opportunities

Courses & Lectures

January–March 2022



REGISTRATION

REGISTER ONLINE

Register online through our secure site at
case.edu/lifelonglearning

REGISTER BY MAIL

Return the registration form in the back of this catalog to:
The Laura and Alvin Siegal Lifelong Learning Program
Case Western Reserve University
Thwing Center, Room 153
10900 Euclid Ave.
Cleveland, OH 44106-7116

REGISTER BY PHONE

216.368.2090 (Campus office) or
216.368.2091 (Beachwood office)

POLICIES

Registration policies including course withdrawals, cancellations and refunds can be found on our website.
Visit **case.edu/lifelonglearning/registration-policies**

MEMBERSHIP

An optional membership model offers reduced fees for courses, lectures and most ticketed events among other perks. Details and pricing are available on our website.
Visit **case.edu/lifelonglearning/membership**

HOW TO REACH US

Case Western Reserve
University Campus
p 216.368.2090
f 216.368.1861

Siegal Lifelong Learning
Beachwood Office
p 216.368.2091
f 216.368.1003

Email:
lifelonglearning@case.edu

Website:
case.edu/lifelonglearning

Mailing Address:
The Laura and Alvin Siegal
Lifelong Learning Program
Case Western Reserve University
10900 Euclid Ave.
Cleveland, OH 44106-7116

Landmark Centre Building
25700 Science Park Drive
Suite 100
Beachwood, OH 44122

Visitors and Deliveries:
Thwing Center, Room 153
11111 Euclid Ave.
Cleveland, OH 44106-7116

CONTENTS

Messages from Siegal Lifelong Learning	2
--	---

Courses and Lectures

Art, Music and Theater	4
History and Culture	5
Hebrew	7
Jewish Studies	8
Literature and Writing	14
Politics and Contemporary Issues	16
Science and Technology	16

Series and Programs

Senior Scholars	17
Travel	10

Membership and Registration	20
-----------------------------------	----

Registration Form	21
-------------------------	----

IMPORTANT INFORMATION

Courses and lectures in this catalog are noted as IN-PERSON OR REMOTE. Please be sure to check this before registering.

In-person programs will have limited enrollment to accommodate social distancing.

Masks and vaccines are currently required; however, updates will be announced prior to the beginning of in-person programming.

As CWRU and public health guidelines are being continuously updated, we will adjust our regulations as necessary.

MESSAGES FROM SIEGAL LIFELONG LEARNING

Since March 2020, Siegal Lifelong Learning has navigated challenges prompted by the COVID-19 pandemic. Today, Siegal continues to be faced with changes as we say farewell to two of our longtime beloved staff members. We offer our good wishes to Brian Amkraut, Executive Director, as he takes on a new career endeavor and to Sheryl Hirsh, Assistant Director of Jewish Studies, as she moves onto a well-deserved retirement. We would like to assure all of you that Siegal will continue its mission to provide the highest quality lifelong learning opportunities and we invite you to join us as Siegal Lifelong Learning looks ahead to a bright future.

A MESSAGE FROM BRIAN AMKRAUT

It is with incredibly mixed emotions that my time as Executive Director of the Laura and Alvin Siegal Lifelong Learning Program at Case Western Reserve University has come to an end. I have taken on an exciting opportunity at another institution that will allow me to continue advancing my own professional aspirations in the realm of higher education's impact on and engagement with surrounding communities, an outlook which has served as one of the pillars of our mission at Siegal Lifelong Learning.

I want to express my gratitude to Laura and Alvin Siegal, of blessed memory, and to Case Western Reserve University for having provided me the opportunity to launch the Siegal Program back in 2012. It has been an honor and a pleasure to serve the broader community as the Program's Executive Director over the past 9 years. I wish all our stakeholders only the greatest success in continuing to realize the vision of community impact and engagement which has been the hallmark of our mission at Siegal these many years.

The team at Siegal is highly committed to the Program's goals and serving the needs of our participants. I am confident that the staff will continue to innovate new and effective ways to bring meaningful learning opportunities to our community, as we are all in this work together.

I thank you all for your continued support of Siegal Lifelong Learning and I look forward to the next chapter for us all.



BRIAN AMKRAUT



THANK YOU TO EVERYONE WHO HAS MADE SIEGAL LIFELONG LEARNING PART OF THEIR PERSONAL LEGACY



A BENEFICIARY DESIGNATION GIFT MAY BE RIGHT FOR YOU:

- ☒ Will or Trust
- ☒ Life Insurance
- ☒ Retirement Plan or IRA
- ☒ Savings or
Investment Account

Find the Right Gift Plan for You

- **Sample Bequest Language – for your will, trust or other philanthropic plan**

"I give to Case Western Reserve University, an Ohio educational and charitable corporation, in Cleveland Ohio ... [choices] A cash bequest of (\$ _ _); A percentage (_ _ %) of my estate; The residue of my estate. I request that this bequest be used for the Siegal Lifelong Learning Program."

- **Charitable IRA Rollover**
- **Securities (stocks, bonds, mutual funds)**
- **Donor Advised Funds**
- **Charitable Gift Annuities**
- **Memorial/Tribute Gifts**

Advise your broker of your gift intent and contact the Case Western Reserve University Office of Investments at 216.368.3253 or investmentoffice@case.edu

Legal Name:
Case Western Reserve University
Federal Tax ID # 34-1018992



THE LAURA & ALVIN SIEGAL
LIFELONG LEARNING
PROGRAM

For more information, please contact:

donorrelations@case.edu
or **216.368.8640**

COURSES AND LECTURES

Art and Music

REMOTE COURSE

PRIMA DONNAS THROUGH THE CENTURIES

Stephanie Ruozzo, Doctoral Candidate, Musicology, CWRU

Wednesdays, January 5-26
1:30– 3 p.m. ET

The musical construction of gender is a key component of operatic characterization, and composers of each century reflect gender in divergent but equally compelling ways. Each class in this series will focus on a different era of operatic history, beginning with the early court operas of the Florentine Camerata, through Classical comic intermezzi, the competing Romanticism of Italian bel canto and German music drama, and finally contemporary representations of women in 21st-century opera. We will examine broader trends among female protagonists while analyzing representative pieces from each period.

Member Price: \$66 | Nonmember Price: \$81

✂ Senior Scholars – Intersession

IN-PERSON COURSE

SCULPTING THE FIGURE ACROSS TIME: THE ANCIENT MEDITERRANEAN WORLD

Professional Staff, Cleveland Museum of Art,

Tuesdays, January 25–March 1
1–2 p.m. ET

Cleveland Museum of Art, 11150 East Blvd., Cleveland

This six-session course offers a focused look at figurative sculpture in the ancient Mediterranean world using the museum's collection, with an emphasis on cultures and geographic areas such as Mesopotamia, Egypt, Greece, and Rome. These ancient cultures created figurative art to share their religious beliefs, including the gods they worshipped; their visions of what takes place after death; and also record the experiences of those who lived on earth. A closer look at their depictions of the human form demonstrates a universal desire to record images of themselves as well as the inhabitants of the living and spiritual realms. Although we find religious and artistic differences across these cultures, we also find many human connections that span time and location.

Member Price: \$89 | Nonmember Price: \$107

REMOTE COURSE

SCULPTING THE FIGURE ACROSS TIME: THE ANCIENT MEDITERRANEAN WORLD

Professional Staff, Cleveland Museum of Art,

Thursdays, January 27–March 3
10–11 a.m. ET

This six-session course offers a focused look at figurative sculpture in the ancient Mediterranean world using the museum's collection, with an emphasis on cultures and geographic areas such as Mesopotamia, Egypt, Greece, and Rome. These ancient cultures created figurative art to share their religious beliefs, including the gods they worshipped; their visions of what takes place after death; and also record the experiences of those who lived on earth. A closer look at their depictions of the human form demonstrates a universal desire to record images of themselves as well as the inhabitants of the living and spiritual realms. Although we find religious and artistic differences across these cultures, we also find many human connections that span time and location.

Member Price: \$89 | Nonmember Price: \$107

REMOTE COURSE

CLEVELAND READS AND ROCKS: FOUR CLASSIC ROCK AND ROLL NOVELS

Stephen Arnoff, CEO, Fuchsberg Jerusalem Center

Thursdays, March 3–24
10–11:30 a.m. ET

Read and rock with scholar, writer, and teacher Dr. Stephen Daniel Arnoff. Enter worlds of music, madness, longing, laughter, and legend in four wonderful books about rock and roll. Each session will include discussion of one of the novel's in context of music and cultural history, and how each virtuoso literary performance reveals the majesty, ridiculousness, and beauty at the heart of the music that changed the world.

Read: *Great Jones Street*, Don DeLillo; *Stone Arabia*, Dana Spiotta; *The Final Revival of Opal and Nev*, Dawnie Walton; *High Fidelity*, Nick Hornby

Member Price: \$68 | Nonmember Price: \$83

IN-PERSON COURSE

MORE CINEMA OF OTHERNESS

Terri Mester, Part-time Fellow in SAGES, Adjunct Professor in the School of Law, CWRU

Thursdays, March 17–April 21

1:30–3 p.m. ET

Landmark Centre Building

25700 Science Park Drive, Beachwood

Othering is a process where we create an identity by looking at others who are different than us. This Other, though perhaps based on knowledge of a real person or people, is always shaped by the Self's projected fears and desires. At a cultural level, these projections result in generally held stereotypes that the powerful use to maintain their superior position. Movies are one place where stereotypes of the Other are created and maintained. Movies shape how we see, think and feel toward the Other. In this course, we'll approach the African American Other through a different lens, plus analyze four other ethnic groups.

Member Price: \$130 | Nonmember Price: \$151

✕ Senior Scholars – Thursdays

History and Culture

IN-PERSON COURSE

THE GREAT RECOVERY – THE 1920S

Patrick Moore, Instructor of Lifelong Learning

Mondays, January 24–March 14

1:30–3 p.m. ET

South Franklin Circle, 16600 Warren Ct., Chagrin Falls

With World War I behind them, Americans lived it up in the 1920s. The energy and creativity unleashed illuminated ten brilliant years. Something was in the air, and music, technology, the movies and radio made great strides. Celebrity culture was invented; Babe Ruth made baseball the national pastime; Lindbergh flew over the pond, and women finally could vote. We will explore this unique period of American history through articles, Powerpoints, and videos.

Member Price: \$93 | Nonmember Price: \$109

This course is offered with the generous support of the Association for Continuing Education.

REMOTE LECTURE

CLEVELAND'S CULTURAL GARDENS: A LANDSCAPE OF DIVERSITY

John Grabowski, Krieger Mueller Associate Professor of Applied History, CWRU

Monday, January 31

7–8:30 p.m. ET

Cleveland's Cultural Gardens are a celebrated monument to the ethnic diversity of the city. Yet their history is embedded in other histories, some national, many international, and of course, the history of the landscape in which they exist. This presentation will examine that broader context of migration, immigration, war, peace, and ecology that has influenced their creation and history. It will also introduce a forthcoming book by John Grabowski and Lauren Pacini that examines this "landscape of diversity."

Free and Open to the Community

🕒 Cleveland Civics History Lecture Series

IN-PERSON COURSE

PARTIES AGAINST THE STATE: THE GERMAN EXAMPLE, 1871–PRESENT

Kenneth Ledford, Associate Professor and Chair, History, CWRU

Tuesdays, February 1–March 1

1:30–3 p.m. ET

Landmark Centre Building

25700 Science Park Drive, Beachwood

Since the first unification of Germany in 1871, any number of political parties have attracted support by advocating policies and platforms opposed to the state structure in existence at the time. The Basic Law of the Federal Republic of Germany, essentially the constitution of the Germany we know today, even prescribes a judicial process to ban political parties opposed to the "basic democratic order." This course will look at five examples of parties opposed to the political order of their day.

Member Price: \$130 | Nonmember Price: \$151

✕ Senior Scholars – Tuesdays

COURSES AND LECTURES

IN-PERSON COURSE

"GENTLEMAN JACK": MISS ANNE LISTER OF SHIBDEN HALL, HALIFAX

Joan Burda, Adjunct Professor, Law, CWRU

Wednesdays, February 2–March 2

1:30–3 p.m. ET

Landmark Centre Building

25700 Science Park Drive, Beachwood

Anne Lister was a 19th century English landowner who is considered the first modern lesbian. She kept a journal for most of her life and detailed her daily activities, travels, and local gossip. Approximately 20% of the journal entries are in code, developed by Anne Lister, and used by her to discuss her relationships with women. Her journals comprise almost 5 million words and are found in 26 volumes, plus another 16+ travel journals. The journals were added to the UNESCO Memory of the World Programme in 2011. The register citation notes the journals "comprehensive and painfully honest account of lesbian life and reflections on her nature, however, which have made these diaries unique. They have shaped and continue to shape the direction of UK Gender Studies and Women's History." Her story became better known after the BBC/HBO series, "Gentleman Jack" came out in 2019.

Member Price: \$130 | Nonmember Price: \$151

✕ Senior Scholars – Wednesdays

IN-PERSON COURSE

BALLOTS AND BULLETS: CLEVELAND'S TROUBLED RACE HISTORY AND LESSONS FOR TODAY

James D. Robenalt, Partner, Thompson Hine LLP

Thursdays, February 3–March 3

1:30–3 p.m. ET

Landmark Centre Building

25700 Science Park Drive, Beachwood

This course will explore author James Robenalt's fourth nonfiction history book, *Ballots and Bullets, Black Power Politics and Urban Guerrilla Warfare in 1968 Cleveland*. The Glenville shootout on July 23, 1968, between Cleveland Police and Black Nationalists, is the focus of a series of lectures on the Civil Rights movement in Cleveland and the rise of Black Nationalism. Figures explored include Malcolm X, who delivered his most important speech in Cleveland in 1964, the famous Ballot or Bullets speech; Dr. King and his many visits to Cleveland to support Carl Stokes in his race

to become the first African American mayor of a major US city; and Bobby Kennedy, who gave his fateful "Mindless Menace of Violence" speech to the City Club of Cleveland the day after Dr. King's assassination. Special emphasis on policing in Cleveland's minority neighborhoods, Stokes' massive "Cleveland: NOW!" antipoverty program, and the impact of the demise of the national war on poverty and Cleveland's struggles that followed the summer of 1968.

Member Price: \$130 | Nonmember Price: \$151

✕ Senior Scholars – Thursdays

REMOTE LECTURE

ABRAHAM LINCOLN: THE MAN BEHIND THE MYTH

Susan Cannavino, Instructor of Lifelong Learning

Friday, February 25

noon–1:30 p.m. ET

This lecture is a critical analysis of how Lincoln's ancestry, childhood, relationships, and career merged to create this extraordinary leader. It is a lecture full of hidden gems beginning with the story of his maternal grandmother, his unique relationship with Robert E. Lee, and many other revelations to treasure. It is a refreshing perspective dealing with Lincoln's individual humanity. You will have an even greater appreciation about why he is considered one of our country's greatest presidents.

Member Price: \$5 | Nonmember Price: \$10

REMOTE COURSE

ITALIAN REGIONAL CUISINES, PART 2: THE SOUTH

Paola Basile, Professor of Italian and French, Lake Erie College

Tuesdays, March 1–April 5

4–5:30 p.m. ET

Italy is the country with a hundred cuisines and thousands of recipes. Its great variety of culinary practices reflects a long history. This seminar will explore the different regional cuisines of Italy in an effort to understand the rich diversity of Italian Culture. The seminar is in English however the Italian language will be introduced as well. This part 2 will focus on the southern-central regions of Italy such as: Lazio, Umbria, Abruzzo, Marche, Campania, Molise, Puglia, Calabria, and Sicily. Participation in Part 1 not required.

Member Price: \$102 | Nonmember Price: \$125



Hebrew

Conversational Hebrew teaches students to communicate in Israel's native language: to be able to read Israeli newspapers, view Israeli television, and enjoy Hebrew literature, songs, drama and film. **Classical Hebrew** exposes students to the sights and sounds of the original Hebrew letters appearing in the Bible. Students will have multiple opportunities to absorb the content using various activities, games, and manipulatives.

Member Cost: \$203 | Nonmember Cost: \$225

REMOTE COURSES

ADVANCED BEGINNER CONVERSATIONAL HEBREW

Leah Cooper, Hebrew Language Instructor
Mondays, January 10–April 4 (no class January 17)
10 a.m.–noon ET

INTERMEDIATE CONVERSATIONAL HEBREW

Leah Cooper, Hebrew Language Instructor
Tuesdays, January 11–March 29
6:30–8:30 p.m. ET

INTERMEDIATE CONVERSATIONAL HEBREW

Rivka Taub, Hebrew Language Instructor
Wednesdays, January 12–April 6 (no class March 16)
10 a.m.–noon ET

INTERMEDIATE CONVERSATIONAL HEBREW

Leah Cooper, Hebrew Language Instructor
Thursdays, January 13–April 7 (no class March 17)
10 a.m.–noon ET

ADVANCED HEBREW LITERATURE

Judith Shamir, Hebrew Language Instructor
Tuesdays, January 11–March 29
10 a.m.–noon ET

ADVANCED CONVERSATIONAL HEBREW

Rivka Taub, Hebrew Language Instructor
Tuesdays, January 11–March 29
10 a.m.–noon ET

ADVANCED CONVERSATIONAL HEBREW

Judith Shamir, Hebrew Language Instructor
Thursdays, January 13–April 7 (no class March 17)
10 a.m.–noon ET

ADVANCED CONVERSATIONAL HEBREW

Rivka Taub, Hebrew Language Instructor
Thursdays, January 13–April 7 (no class March 17)
6:30–8:30 p.m. ET

CLASSICAL HEBREW

INTERMEDIATE CLASSICAL HEBREW

Holly Litwin, Hebrew Language Instructor
Thursdays, January 13–April 7 (no class March 17)
6:30–8:30 p.m. ET

COURSES AND LECTURES

Jewish Studies

REMOTE COURSE

MARTIN BUBER: JUDAISM FOR THE WORLD

Bill Plevan, Rabbi, Instructor Gratz College

Tuesdays, January 4–25
7–8:30 p.m. ET

Martin Buber, one of the most influential modern Jewish philosophers, had a unique vision of how Judaism can repair the struggles of modern life. Modern societies offered improved life conditions and new opportunities, but did they also require Jews to leave their tradition behind? Were these societies more just, or did they hurt our relationships and cause sickness to the soul? In this class, we will explore Buber's translations of Hasidic stories and interpretations of the Bible, to study his teachings about: Everyday Religion; Loving God and Loving Humanity; The Task of the Jewish People; What is Redemption and When Will it Come?

Member Price: \$68 | Nonmember Price: \$83

REMOTE LECTURE

ISRAELI SOCIETY BETWEEN "SHTISEL" AND "FAUDA"

Liat Alon, Teaching Assistant Professor, Program in Jewish Culture and Society and Department of History, University of Illinois, Urbana-Champaign

Wednesday, January 5
noon–1:30 p.m. ET

Fauda and *Shtisel* are two of the most acclaimed Israeli television series. Taken together, they give us a clear view into the complexity of modern Israeli society. This talk will take a close look at characters, plot lines, and key moments from both shows, and how these shed light on some of the domestic and regional dilemmas facing Israel today.

Free and Open to the Community

REMOTE COURSE

A HISTORY OF ISRAEL'S BORDERS

Assaf Boker, Israeli Tour Guide

Sundays, January 9–30
noon–1:30 p.m. ET

The borders of the state of Israel have shifted several times since its founding 73 years ago. In this class, we will explore the historical, religious, military, and geo-political contexts for these changes, with specific attention to the northern border with Syria, the southern border with Gaza, and the city of Jerusalem. We will learn the ideological and historic roots of the different terms used in discussions of these borders, and examine the competing claims, conflicts, and hopes that they represent.

Member Price: \$68 | Nonmember Price: \$83

REMOTE COURSE

PRIMO LEVI'S LEGACY

Anthony Wexler, Lecturer, Department of English, CWRU

Mondays, January 10–February 7 (No class Jan. 17)
10–11:30 a.m. ET

In 2015, *The Complete Works* of the Italian writer and Holocaust survivor, Primo Levi, was published in an impressive three-volume set. The collection, which came out almost thirty years after Levi's untimely death in 1986, confirmed his reputation as one of the most important witnesses of the Nazi genocide. But it was Toni Morrison's introduction to the new collection that seemed to solidify his status as a writer of global importance. In this short course, we'll discuss some of Levi's celebrated stories, poems, and memoirs to better understand his evolution from Holocaust writer to literary giant.

Member Price: \$68 | Nonmember Price: \$83

IN-PERSON COURSE

SHEMITTAH, THE YEAR OF RELEASE: THE LAWS, MEANING, AND MODERN DAY RELEVANCE OF THE 7TH (AND CURRENT) YEAR IN THE JEWISH CALENDAR

Amalia Haas, Rabba, Director of Spiritual Engagement, Congregation Beth Shalom, Providence, RI

Tuesdays, January 18–February 8
10–11:30 a.m. ET

Landmark Centre Building
25700 Science Park Drive, Beachwood

The Shemittah year – a year in which the land rests – occurs every seventh year, paralleling the Sabbath and weekdays, and creating an architecture of Jewish time. What does it mean to give the "land" a sabbatical? How has this biblical commandment been made relevant to modern life? This class will explore the biblical sources mandating the observance of Shemittah and how it evolved over time. We will look at the revival of observance of the Shemittah year, in the State of Israel and in the diaspora, and some new ways in which Shemittah is being connected to environmentalism and economics.

Member Price: \$68 | Nonmember Price: \$83

REMOTE COURSE

TZEDEKA: NEGOTIATING CIVIC ORDER AND SOCIAL JUSTICE

Hannah Hashkes, Rabbanit, Director of Ohr Torah Stone's International Halakha Scholars Program

Wednesdays, January 19–February 9
10–11:30 a.m. ET

"Tzedeka" is usually translated as "charity". From a rabbinic perspective, Tzedeka represents the balance between maintaining civic order and ensuring social justice. The first chapter of the Talmudic tractate of *Bava Batra* approaches this issue in the context of drawing boundaries between private and public properties. This class explores ways in which the rabbis attempt to strike a just and healthy balance between the communal interest of law and order and the individual need for attentive consideration and care.

Member Price: \$68 | Nonmember Price: \$83

REMOTE COURSE

LEAVING THEIR MARK: HOW MIGRATION HAS SHAPED ISRAELI SOCIETY

Steve Klein, Instructor, Tel Aviv University, and Haaretz English Edition Senior Editor

Wednesdays, January 19–February 9
1:30–3 p.m. ET

Israeli society, and its priorities, have been shaped by new arrivals throughout its history. Many became the architects of public policy, while others engendered profound political or social change. This course will explore the impact of immigrants who arrived at very different historical moments: the five pre-state waves; those who came from Arab lands in the 1950s and 1960s; immigrants from the Former Soviet Union in the 1980s and 1990s; and migrant workers from Africa and Asia who arrived in the 1990s and 2000s.

Member Price: \$68 | Nonmember Price: \$83

SYMPOSIUM — SAVE THE DATE

THE TORAH: A WOMAN'S COMMENTARY WHAT DIFFERENCE HAS IT MADE?

Sunday, March 6 | 1 p.m. ET

Details to Follow

Featuring:



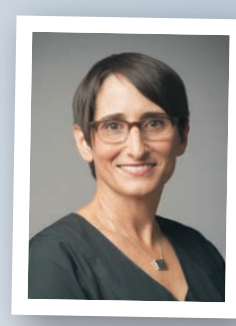
**Rabbi Tamara Cohn
Eskanazi, PhD**
Hebrew Union College –
Jewish Institute of
Religion



Rabbi Hara E. Person
Central Conference
of American Rabbis



Cantor Sarah Sager
Anshe Chesed
Fairmount Temple



**Rabbi Andrea L.
Weiss, PhD**
Hebrew Union College –
Jewish Institute of
Religion

This program is offered with the generous support of the Friends of Jewish Lifelong Learning.

Educational Travel Program

Explore the World with CWRU

VOYAGE UNDER THE MIDNIGHT SUN: ARCTIC EXPEDITION

June 20–30, 2022

Trip Leader:
Glenn Starkman,
Professor of physics
and astronomy and
director of the Center for
Education and Research in
Cosmology and Astrophysics



VANCOUVER TO TORONTO BY RAIL

August 11–17, 2022

Optional Victoria Pre-tour and a Niagara Falls &
Toronto Post-tour

THE WORLD IS YOUR CLASSROOM

- Visit international destinations with faculty experts sharing their in-depth knowledge and love of learning
- Gain access to behind-the-scenes sites, cultural treasures and educational activities
- Travel with small groups of Case Western Reserve alumni and friends
- Start your journey from any place in the world
- CWRU's Luminary Society members may receive additional discounts on CWRU Educational Travel programs. For further information on Luminary Society travel discounts only, please contact The Office of Strategic Giving or 216.368.4460.

THE GALAPAGOS ISLANDS

October 11–18, 2022

Optional Mashpi

Lodge Pre-tour and Machu Picchu & the Sacred Valley Post-tour

Trip Leader:
Patricia Princehouse,
Director, Program in
Evolutionary Biology

GREECE: BEACHES AND RUINS

May 15–28, 2022

Trip Leader:
Rachel Sternberg,
Associate Professor of Classics, CWRU



SUDAN: THE KINGDOM OF THE BLACK PHARAOHS

December 28–
January 11, 2023

Trip Leader:
Dr. Meghan Strong, Adjunct
Assistant Professor in Classics

For more information or to sign up, visit
case.edu/lifelonglearning/travel
or contact Sarah Doody at sxd618@case.edu or 904.432.3141

COURSES AND LECTURES

EASTSIDE CONVERSATIONS

REMOTE LECTURE

HAZAMIR: NOT JUST A CHOIR

Vivian Lazar, Director, HaZamir: The International Jewish Teen choir

Friday, January 21
noon–1 p.m. ET

Vivian Lazar will share with us the history of the international Jewish teen choir, HaZamir. HaZamir is a musical youth movement with 40 chapters across the United States and Israel. The choir builds pluralistic peer community, facilitates leadership in the next generation and forges strong U.S.-Israel connections while performing to the highest musical standards.

Free and Open to the Community

REMOTE LECTURE

WAS ALEXANDER HAMILTON JEWISH?

Andrew Porwancher, Ernest May Fellow, Harvard University, and Wick Cary Associate Professor at University of Oklahoma

Thursday, January 27
7–8:30 p.m. ET

Join Professor Andrew Porwancher as he debunks a string of myths about the origins of this founding father, to arrive at a startling conclusion: Hamilton, in all likelihood, was born and raised Jewish. Uncovering the truth about Hamilton is critical to understanding why he came to champion the cause of American Jewry in the new nation he fought to create.

Free and Open to the Community

IN-PERSON COURSE

VISITING THE SICK: A LITERARY JOURNEY

Mirit Balkan, Chaplain, Fairview Hospital

Fridays, February 4–March 4
10–11:30 a.m. ET

Landmark Centre Building
25700 Science Park Drive, Beachwood

At the core of the Jewish response to illness is the requirement to visit the sick. This class will explore the experience of visiting the sick as it is described in Jewish and Israeli literature. What is it like to be sick and/or to be a caregiver? What makes the exchange between the visitor and the visited so meaningful? How does it create belonging and connection, particularly in a time of global pandemic? Readings will include Biblical stories about Abraham; writings of the Baal Shem Tov – a 17th century Jewish mystic; and short stories and poems by modern Israeli writers including Abba Kovner, Rachel, and Hayim Nahman Bialik. Texts will be available in both English and Hebrew.

Member Price: \$85 | Nonmember Price: \$103

REMOTE COURSE

JEWISH ART AND IDENTITY: ANCIENT THROUGH MEDIEVAL TIMES

Avi Rose, Artist, Writer, Educator

Mondays, February 7–28
1:30–3 p.m. ET

Over the last century, an astonishing assortment of ancient and Medieval Jewish art has been unearthed by archeologists and historians. These artifacts offer insight into how Jewish communities lived, how they perceived themselves and their relationship with the cultures that surrounded them. Together, we will explore these discoveries and the implications they have for our understanding of Jewish tradition and cultural history.

Member Price: \$68 | Nonmember Price: \$83

REMOTE LECTURE

JEWISH FUR TRADERS AND THEIR NATIVE WIVES

Mara Cohen Ioannides, Senior Instructor, Missouri State University; President, Midwest Jewish Studies Association

Wednesday, February 9
noon–1:30 p.m. ET

This talk will examine stories of Jewish fur traders in North America and their Native wives from the Colonial Period through the 19th Century. Some of these are real couples, like Jacob Franks and Thérèse de Gère dit Larose and others are myths, like Joseph Sondhiemer and his Native wife. We will unpack why these myths exist and which are true and which are false.

Free and Open to the Community

REMOTE LECTURE

CONTEMPORARY WRITING IN ISRAEL: CAN YOU AVOID POLITICS?

Assaf Gavron, Israeli Writer and Translator

Tuesday, February 15
12:30–1:30 pm

Join Assaf Gavron to explore the role of politics within contemporary Israeli fiction. Does life in such a politically-charged environment influence the kind of fiction, and other art forms, created within it? What is the role of authors in such an environment? Are they expected to deal with political situations – possibly even have an obligation to do so? Or perhaps politics is a burden, a topic that they cannot escape from? Through a series of examples, from his own experiences, as well as those of his peers, Gavron shows how contemporary Israeli writers deal with these and other questions, both in their fiction and beyond it.

Free and Open to the Community

This lecture is supported by the Herbert and Marianna Luxenberg Siegal College Israel Lecture Fund of the Jewish Federation of Cleveland, and is offered in partnership with the Cleveland Israel Arts Connection of the Jewish Federation of Cleveland.

REMOTE COURSE

CHALLENGING MYTHS AND STEREOTYPES: JEWISH MIDDLE EASTERN HISTORY SINCE THE 1700S

Liat Alon, Teaching Assistant Professor, Program in Jewish Culture and Society and Department of History, University of Illinois, Urbana-Champaign

Thursdays, March 3–31 (No class March 17)
1:30–3 p.m. ET

Patriarchal, Traditional, Backward, Oppressive: These are some of the still common misconceptions about Middle Eastern societies – including Jews living in Middle Eastern countries. In this class, we will explore some of these stereotypes, and challenge what we think we know about modernity, family, gender, agency, and the daily lives of Jewish men and women in the Middle East. Our primary case study will be the Jews of Egypt, as we explore the unique characteristics of different Jewish societies across the Middle East.

Member Price: \$68 | Nonmember Price: \$83

REMOTE LECTURE

PERSIAN PURIM

Drora Arussy, Director, American Sephardi Federation's Institute of Jewish Experience

Monday, March 14
noon–1:30 p.m. ET

Purim has a special significance for Jews from Iran, the historical home of the Book of Esther. Join us for a journey through the Purim practices of Jews in Iran and other communities in the region, including a virtual tour to the Tomb of Esther and Mordechai.

Free and Open to the Community

REMOTE COURSE

THE TORAH: A WOMEN'S COMMENTARY – DEVASTATING DRAMAS AND PEAK MOMENTS

Sarah Sager, Cantor Laureate of Anshe Chesed Fairmount Temple

Tuesdays, March 15–April 5
1:30–3 p.m. ET

The women of the Bible are most often portrayed as supporting characters, if at all, even while they lived lives as dramatic and meaningful as their male counterparts. *The Torah: A Women's Commentary*, lifts their narratives out of obscurity for exploration and evaluation. In this class, we will look at various Torah portions and study the commentaries, interpretations, and poetry especially collected in *A Women's Commentary* to illuminate the lives of our ancient mothers. We will explore how women's scholarship and perspectives challenge us with new views of familiar stories.

Member Price: \$68 | Nonmember Price: \$83

IN-PERSON COURSE

FROM MAXWELL HOUSE TO MOSS: THE HAGGADAH THROUGH HISTORY

Gila Silverman, Director of Jewish Lifelong Learning

Mondays, March 21–April 11
1:30–3 p.m. ET

Landmark Centre Building
25700 Science Park Drive, Beachwood

The Haggadah is one of the most published books in Jewish history. The thousands of different editions – and the artwork and commentaries they contain – provide a window into history, culture, geography, and the evolution of Jewish practice. There is the Maxwell House Haggadah, mass-produced and distributed free with coffee purchases since 1932, and the limited edition paper-arts Haggadah created by American-Israeli artist David Moss. There are feminist, vegetarian, and social action Haggadot. There are Haggadot that tell the histories of different peoples and countries. There is even a Hogwarts Haggadah. Join us as we journey through Jewish history by exploring these diverse books.

Member Price: \$68 | Nonmember Price: \$83

REMOTE LECTURE

BERLIN BEFORE AND DURING THE HOLOCAUST

Cathy Lesser Mansfield, Senior Instructor in Law, CWRU

Wednesday, March 30
7–8:30 p.m. ET

Using historical photographs, this presentation will describe daily life in Berlin, and the dramatic historic events that took place in Germany during the years leading up to and during the Holocaust. Berlin in these years provides the setting for the opera *The Sparks Fly Upward*, which was written by Mansfield, and will make its Cleveland premiere on June 9–12, 2021 at The Maltz Performing Arts Center. *The Sparks Fly Upward* follows three German families in Berlin, two Jewish and one Christian, through the Holocaust, beginning in the autumn of 1938 with the events building up to Kristallnacht and ending with the liberation of Berlin in May 1945.

Free and Open to the Community

COURSES AND LECTURES

Literature and Writing

REMOTE COURSE

MORE OF WILL'S WILLFUL WOMEN

Barbara Burgess-Van Aken, SAGES Fellow, English, CWRU

Tuesdays, January 11–February 1
noon–1:30 p.m. ET

Continuing the theme of our last session, this class will explore the question of whether Shakespeare's characterizations of women in his plays reveal any pro-feminist sentiments. We will also consider whether there is a relationship between Shakespeare's choice of genre and the ways in which he ascribes power to his women. Although we will discuss Shakespeare's willful female characters from a range of his works, our chief investigations will focus on four plays: *Titus Andronicus* (1591), *Merchant of Venice* (1598), *As You Like It* (1599), and *Twelfth Night* (1601). (Participation in the previous session is not a requirement)

Read: *The Folger Library*, Simon and Schuster

Member Price: \$66 | Nonmember Price: \$88

📖 Revisiting the Classics

REMOTE COURSE

THE LAST DAYS OF SOCRATES: PLATO'S SOCRATIC DIALOGUES

Janice Vitullo, Instructor of Lifelong Learning

Thursdays, January 13–February 3
10–11:30 a.m. ET

Socrates was condemned to death in 399 BCE by his fellow Athenian citizens. He left no writings of his own, but his student Plato describes his trial and execution in these four Socratic dialogues: *Euthyphro*, *Crito*, *Apology* and *Phaedo*. In this class, we will read and discuss each dialogue in depth, examining both the historical event and the important philosophical themes of the forms, justice and duty, and the immortality of the soul that become the foundation of Plato's later work, *The Republic*.

Read: *Plato: Last Days of Socrates*, translated by Hugh Tredennick and Harold Tarrant, ISBN# 978-0140449280 (For the sake of class discussion, it is recommended that everyone have the same translation.)

Member Price: \$68 | Nonmember Price: \$83

📖 Revisiting the Classics

IN-PERSON COURSE

CREATIVE NONFICTION WRITING

Linda Tuthill, Instructor of Lifelong Learning

Tuesdays, January 18–March 1
1–3 p.m. ET

Landmark Centre Building
25700 Science Park Drive, Beachwood

Creative nonfiction invites writers to take experiences from across the life span and bring them to life on the page. Work read in class receives careful attention and helpful feedback.

Member Price: \$99 | Nonmember Price: \$119

IN-PERSON COURSE

POETRY WRITING

Linda Tuthill, Instructor of Lifelong Learning

Thursdays, January 20–March 3
1–3 p.m. ET

Landmark Centre Building
25700 Science Park Drive, Beachwood

Writing poetry fosters seeing anew the wonders that surround us in everyday life and helps express both joy and sorrow. Please bring 12 copies of a poem you've written to the first session.

Member Price: \$99 | Nonmember Price: \$119

REMOTE COURSE

INTO THE WOODS: THE NATURAL WORLD IN CONTEMPORARY SHORT FICTION

Elissa Cahn, Instructor, Kalamazoo Institute of Arts

Mondays, January 24–February 28
1–2:30 p.m. ET

In this class, we will examine the ways in which authors employ the natural world to deepen our understanding of character and theme. Camping, trekking, hunting/fishing, and sailing create inherent tension. We'll study how landscapes, animals, weather, and natural disasters function in the stories of contemporary North American writers like Tim O'Brien, Pam Houston, and Margaret Atwood.

Member Price: \$102 | Nonmember Price: \$125

📖 Revisiting the Classics

REMOTE COURSE

SIX GREAT WORKS OF MODERN BRITISH POETRY

Shelley Bloomfield, Instructor of Lifelong Learning

Wednesdays, January 26–March 2
10:30 a.m.–noon ET

What makes a poem “modern?” Aside from considering their historical context, we’ll read and discuss six major works, tackling these questions: how does the poem invigorate old forms – or discard them altogether for new ones? Does the poem discover new and more relevant meanings, or assail the failed comforts of a disappearing age? How does the poem break through formal poetic traditions and find new ground to explore? How does the very imagery feel fresh, alarming, entangling, beautiful, original – and “modern?” Roughly 100 years from their creation, what do these masterpieces tell us about alienation, the lessons of the past, and a future that depends on human connection?

Read: *The Love Song of J. Alfred Prufrock*, Eliot; *Among School Children*, Yeats; *Fern Hill*, Thomas; *Dulce et Decorum*, Owen; *The Incarnate*, Gore-Booth; *Musee des Beaux Arts*, Auden

Member Price: \$78 | Nonmember Price: \$93

This course is offered with the generous support of the Association for Continuing Education.

REMOTE COURSE

FRYING THE GREEKS: STEPHEN FRY ON GREEK MYTHOLOGY

Paula Kalamaras, Instructor of Lifelong Learning

Thursdays, January 27–March 17
10–11:30 a.m. ET

Stephen Fry, the legendary writer, scholar, comedian, and actor, has turned his formidable intellect and humor to the ancient stories of the Greeks (with a few nods to the Romans) in his books *Mythos* and *Heroes*. While he completes his trilogy with *Troy*, we will concentrate on how he has reimagined the Greek Myths and Heroes in these two well-documented, illustrated, and brilliant books. They are also available as audiobooks and ebooks.

Read: *Mythos*, Stephen Fry; *Heroes*, Stephen Fry

Member Price: \$93 | Nonmember Price: \$109

This course is offered with the generous support of the Association for Continuing Education.

REMOTE COURSE

THE “BEST AMERICAN SHORT STORIES” OF 2021?

Angela Fasick, Instructor of Lifelong Learning

Wednesdays, February 2–March 23
10–11:30 a.m. ET

Every year – beginning in 1915 and continuing for the last 106 years – a new edition of *The Best American Short Stories* arrives in bookstores and libraries. Currently published by Houghton Mifflin Harcourt, the editor of the series asks a distinguished American author to read 100+ stories published in literary magazines and major periodicals during the preceding year. The writer chooses his/her 20 favorites and also contributes an introduction to the anthology. Contemporary guest editors have included everyone from Stephen King and Curtis Sittenfeld to Elizabeth Strout and Tom Perotta. In this course, we’ll read and discuss the stories in the 2021 edition with the aim of discovering what they have in common and what they say about life in America in the 21st century. We’ll also debate what “the best” really means! A great introduction to contemporary American short stories.

Read: *The Best American Short Stories 2021*

Member Price: \$136 | Nonmember Price: \$167

REMOTE COURSE

THE BRILLIANCE AND RANGE OF EMILY DICKINSON

Cindy Sabik, Instructor of Lifelong Learning

Mondays, March 7–April 11
1–2:30 p.m. ET

Boundary-breaking, beloved, revered, misunderstood, Emily Dickinson remains one of the foremost geniuses of American poetry. In this 6-week course we will explore a range of Emily Dickinson’s poetry. Each week we will read and discuss poetry on a different theme including her “riddle” poems, the master poems, the wife poems, and poems about nature, hearth and home, and inner life. We will consider biographical challenges and recent research into Dickinson’s life and work.

Read: *The Poems of Emily Dickinson*, R.W. Franklin (ed.)

Member Price: \$102 | Nonmember Price: \$125

📖 Revisiting the Classics

COURSES AND LECTURES

Politics and Contemporary Issues

REMOTE COURSE

THE RIGHT TO PRIVACY

Barbara Greenberg, Instructor of Lifelong Learning

Tuesdays, January 25–March 15
10–11:30 a.m. ET

Our Right to Privacy seems to be changing daily. There is a continuing conflict between individual rights and those of the community for public safety, security and health and welfare. As well, issues of personal choice are in conflict with the first amendment issues of free speech and religion. Our classes will look at the areas of most recent concern – technology, public health, and personal and family issues. Our discussions will include a review of decisions from the United States Supreme Court involving these areas and the Bill of Rights which gives us the basis for our right to privacy.

Member Price: \$93 | Nonmember Price: \$109

This course is offered with the generous support of the Association for continuing Education.

REMOTE COURSE

THE SOCIAL AND ECONOMIC POLICIES OF THE BIDEN ADMINISTRATION

Earl Leiken, Instructor of Lifelong Learning

Fridays, January 28–March 4
10:30 a.m–noon ET

This course will focus on the Biden administration's efforts to address the large social and economic disparities that have emerged in the U.S. in recent decades including efforts to create universal pre-school and community college education, provide child and health care support, create jobs through infrastructure and climate change initiatives, expand Medicare and increase taxes on corporations and the wealthiest Americans. The course will include a comparison of the U.S. with other countries and consider arguments supporting and opposing these changes

Member Price: \$78 | Nonmember Price: \$93

This course is offered with the generous support of the Association for Continuing Education.

REMOTE LECTURE

THE FUTURE OF ROE V WADE

James D. Robenalt, Partner, Thompson Hine LLP

Friday, January 28
noon–1:30 p.m. ET

With the United States Supreme Court set to hear the case of *Dodd v. Jackson Women's Health Organization*, the future of *Roe v Wade* is in serious doubt. *Dodd* involves a Mississippi law that outlaws abortion after 15 weeks with some exceptions – and is a direct challenge to *Roe's* viability standard. In *January 1973, Watergate, Roe v Wade, Vietnam, and the Month That Changed America Forever*, author James Robenalt explored the origins of *Roe* and the untold story of how law clerks helped fashion the trimester/viability tests. This lecture will look at the history of *Roe* and the future for reproductive rights.

Member Price: \$5 | Nonmember Price: \$10

Science and Technology

IN-PERSON COURSE

LARGE SCALE AND SMALL SCALE: NATURAL AND HUMAN ENVIRONMENTAL ISSUES ON GEOLOGICAL AND HUMAN TIMEFRAMES

Gerald Matisoff, Professor Emeritus of the Department of Earth, Environmental and Planetary Sciences

Tuesdays, March 15–April 19
1:30–3 p.m. ET

Landmark Centre Building
25700 Science Park Drive, Beachwood

Natural processes occurring over a range of time scales control earth surface conditions such as landscape development, weather and climate, and natural disasters such as hurricanes, earthquakes, and landslides. Human activities can and have influenced many of these processes. This course will explore some local and global scale natural processes which have been influenced by human activities and will put the modern conditions within the context of a longer, geological time frame. Topics covered include the burning of the Cuyahoga River and its role in the creation of the EPA, environmental issues of Lake Erie, the role of the oceans and the atmosphere in global climate and urban heat islands in local climate, climate change over geologic and human timescales, the geological history of North America and NE Ohio, and biodiversity and habitat loss.

Member Price: \$130 | Nonmember Price: \$151

✕ Senior Scholars – Tuesdays

SENIOR SCHOLARS

Senior Scholars is an 11-week program that meets three afternoons per week from 1:30–3 p.m., and features academic lectures by university faculty and local experts on a variety of topics. While the format is lecture style, the afternoons are informal and interactive with opportunity to ask questions and discuss the topics of the day. See full listings and details throughout the catalog.

✂ Senior Scholars

Senior Scholars is generously supported by the Jane and Jon Outcalt Foundation

Location: Landmark Centre – Beachwood

Senior Scholars course cost for the full spring semester:

Member of Lifelong Learning cost: \$264

Nonmember: \$293

Senior Scholars course cost for one day per week:

Member of Lifelong Learning cost: \$130

Nonmember: \$151

Tuesdays

▪ **PARTIES AGAINST THE STATE: THE GERMAN EXAMPLE, 1871–PRESENT**

Kenneth Ledford, Associate Professor and Chair, History, CWRU

Tuesdays, February 1–March 1 | 1:30–3 p.m. ET

[See full listing on page 5]

▪ **LARGE SCALE AND SMALL SCALE: NATURAL AND HUMAN ENVIRONMENTAL ISSUES ON GEOLOGICAL AND HUMAN TIMEFRAMES**

Gerald Matisoff, Professor Emeritus of the Department of Earth, Environmental and Planetary Sciences

Tuesdays, March 15–April 19 | 1:30–3 p.m. ET

[See full listing on page 16]

Wednesdays

▪ **“GENTLEMAN JACK”: MISS ANNE LISTER OF SHIBDEN HALL, HALIFAX**

Joan Burda, Adjunct Professor, Law, CWRU

Wednesdays, February 2–March 2 | 1:30–3 p.m. ET

[See full listing on page 5]

▪ **TBA**

Wednesdays, March 16–April 20 | 1:30–3 p.m. ET

Thursdays

▪ **BALLOTS AND BULLETS: CLEVELAND’S TROUBLED RACE HISTORY AND LESSONS FOR TODAY**

James D. Robenalt, Partner, Thompson Hine LLP

Thursdays, February 3–March 3 | 1:30–3 p.m. ET

[See full listing on page 6]

▪ **MORE CINEMA OF OTHERNESS**

Terri Mester, Part-time Fellow in SAGES,

Adjunct Professor in the School of Law, CWRU

Thursdays, March 17–April 21 | 1:30–3 p.m. ET

[See full listing on page 5]



CONTINUING PROFESSIONAL STUDIES

The Continuing Professional Studies division of Case Western Reserve University-Siegal Lifelong Learning offers part-time certificate programs and boot camps that help participants gain new skills and enhance career opportunities.



Digital Skills Boot Camps

24 weeks online

Full Stack Flex Boot Camp

Begins February 9, 2022

Data Visualization Boot Camp

Begins February 24, 2022

Cybersecurity Boot Camp

Begins March 1, 2022



Digital Career Certificate Programs

18 weeks online

Tableau Data Analytics

Facebook Digital Marketing

Salesforce Administration

Asana Project Management

Next cohorts begin January 25



Design for Advanced Manufacturing for Lightweighting Certificate

Choose from remote learning or on-site course at ASM International

Tuesday, April 5 | 9 a.m.–5 p.m.



Social Impact

Online training and in-country field work

Accelerate your career for good

A variety of programs available including clean energy, marine and wildlife conservation, corporate sustainability, global public health and human rights



THE LAURA & ALVIN SIEGAL
LIFELONG LEARNING
PROGRAM

For more information, visit: case.edu/cps or call 216.368.2090



THE LAURA & ALVIN SIEGAL
LIFELONG LEARNING
PROGRAM

COURSE AUDIT PROGRAM FOR SENIOR CITIZENS



It's Never Too Late to Go Back to School

This program offers adults ages 65 and older reduced tuition rates for a broad range of courses at CWRU. Registration is now open for Spring semester. Classes begin January 10.



When Robin Wick retired from her career in pharmaceuticals, she was looking for something to enrich her life. Beginning with courses in Art History and currently exploring other subject areas, Robin has found that fulfillment through course auditing. Robin shared, "all of the professors at CWRU are extraordinary. They each have different styles and demeanors, and I've enjoyed all of them."

FOR MORE INFORMATION, CONTACT: Felicia Westbrook

SeniorAuditProgram@case.edu | 216.368.2090 | case.edu/seniorauditprogram

MEMBERSHIP & REGISTRATION

Membership

Siegal Lifelong Learning offers an optional membership model for participants. Annual membership entitles members to exclusive discounts, priority registration for some popular events, invitations to members-only events and more. A complete list of membership benefits can be found at case.edu/lifelonglearning/membership. The cost for membership is \$45 for the individual or \$80 for member plus one.

Nonmembers may still register for most events and classes, but do not enjoy priority registration or member discounts or benefits. Additional member benefits may be available to participants in the Siegal Lifelong Learning Annual Fund.

GIFT CERTIFICATES

Give the gift of learning by purchasing a gift certificate for membership and/or courses and lectures. Contact our office at 216.368.2091 for information.

Registration Policies

DISCOUNTS

Case Western Reserve University alumni and retirees (faculty and staff) and Association of Continuing Education members are entitled to \$10 off the current membership rate.

FINANCIAL AID

Financial assistance is available. Please contact Siegal Lifelong Learning for information.

WITHDRAWALS AND SUBSTITUTIONS

- A 100% refund will be issued to the registered student if a completed withdrawal request is received prior to five business days before the start date of the class or lecture.
- A 50% refund will be issued for withdrawal requests received on or after five, but prior to three business days before the start date of the class or lecture.
- There is no refund for withdrawal requests received on or after three days prior to the start date of the class or lecture; no exceptions will be made.
- If unable to attend, you may substitute another person at no additional cost; please notify of change or substitution at least one day prior to the start date of the class or lecture.
- Withdrawal requests must come directly from the student or his/her designee; the official receipt date is the day and time the request is received in the Siegal Lifelong Learning office.

CANCELLATIONS

Although Siegal Lifelong Learning is committed to delivering all classes, workshops or lectures that are scheduled, there are times when a class, workshop or lecture is canceled due to minimum enrollment requirements. If Siegal Lifelong Learning cancels a class, a 100% refund is automatically processed for participants who do not choose to transfer to another available class. Lifelong Learning staff will make every attempt to notify participants of cancellations via registration information. Participants may also call 216.368.2090 for cancellations.

REFUNDS

Refunds can be processed using the credit card used at the time of registration and payment. All other forms of payment will be refunded by check from Case Western Reserve University to the student. Please allow three to four weeks for the refund check to be processed and mailed to the address given at the time of registration. If there has been an address change, please provide the corrected address with your withdrawal request.

REGISTRATION FORM

MAIL: Send completed form to address below.

ONLINE: case.edu/lifelonglearning

FAX: Fax form to 216.368.1861

PHONE: 216.368.2090 or 216.368.2091

Name _____ Birth Year _____

Address _____

City _____ State _____ Zip _____

Telephone _____ Email _____

LIST NAME OF COURSE, LECTURE, EVENT OR WORKSHOP BELOW.

Program Name _____ FEE \$ _____

Program Name _____ FEE \$ _____

Program Name _____ FEE \$ _____

Program Name _____ FEE \$ _____

Program Name _____ FEE \$ _____

Program Name _____ FEE \$ _____

ANNUAL MEMBERSHIP FEE

INDIVIDUAL MEMBER \$45 _____

MEMBER PLUS ONE \$80 _____

Name of Plus One (if applicable) _____

MORE INFORMATION ABOUT MEMBER BENEFITS:

case.edu/lifelonglearning/membership/

TOTAL _____

Please share your suggestions for future courses or programs.

If paying by check, please make payable to
Case Western Reserve University and mail to:

The Laura and Alvin Siegal Lifelong Learning Program
Case Western Reserve University
10900 Euclid Avenue, Thwing Center, Room 153
Cleveland, OH 44106-7116

CREDIT CARD

Mastercard

Visa

Discover

TOTAL \$ _____

Name on Card

Exp. (MM/YY)

Account No.

CVV Code



THE LAURA & ALVIN SIEGAL
LIFELONG LEARNING
PROGRAM



THE LAURA & ALVIN SIEGAL
LIFELONG LEARNING
PROGRAM

Siegal Lifelong Learning Program
Case Western Reserve University
10900 Euclid Avenue
Cleveland, Ohio 44106-7116

TRAVEL IS BACK

**Siegal Lifelong Learning is
pleased to announce the
relaunch of the travel program.**

Travel to national and international locations
and engage in the history and culture led by
faculty experts with deep knowledge and
passion for the destination.

See pages 10 and 11 for a sampling of
upcoming travel opportunities beginning
in Spring 2022

