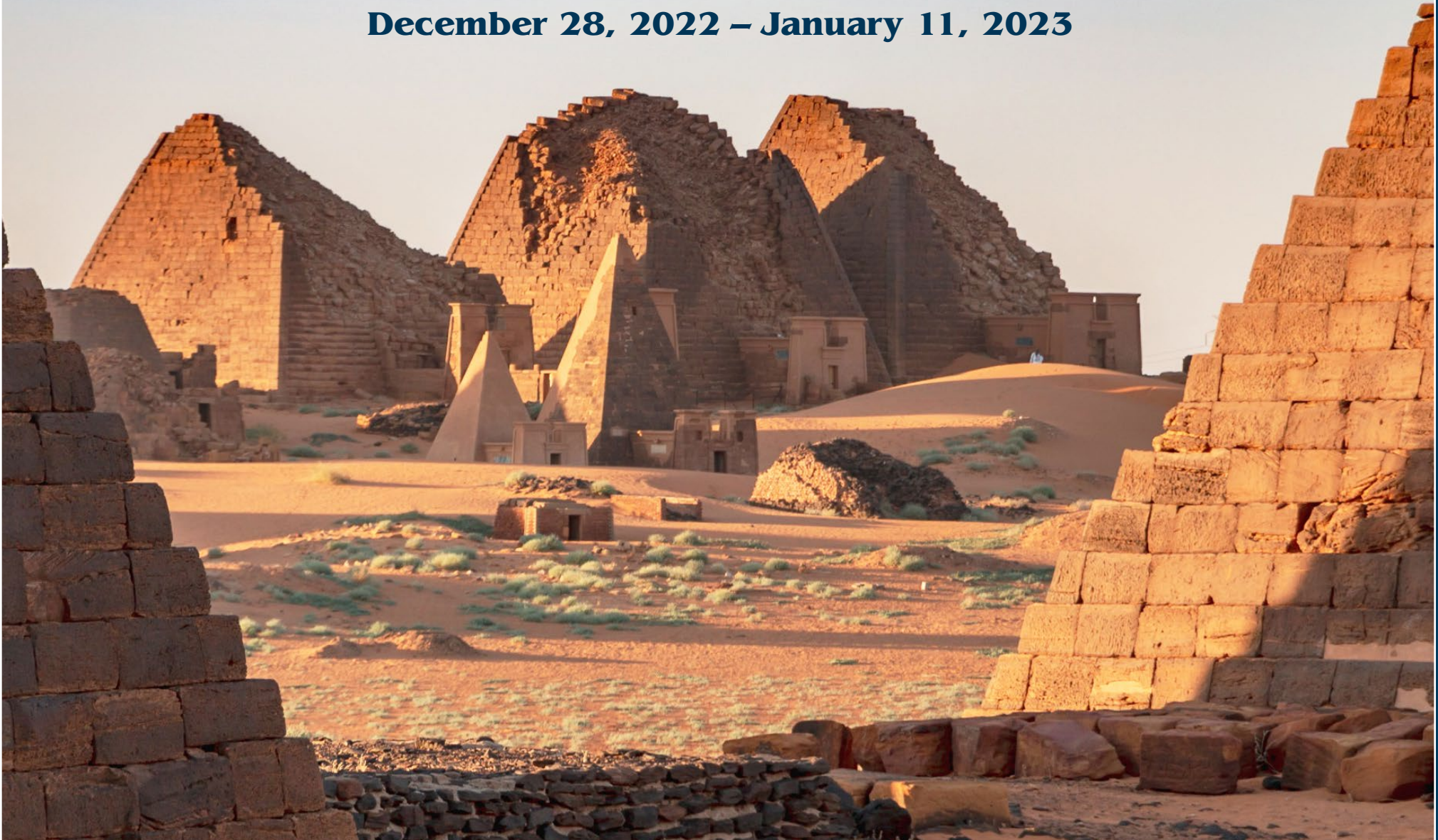


# Sudan: The Land of the Nubian Pharaohs

**December 28, 2022 – January 11, 2023**





Dear Alumni and Friends,

Join your fellow travelers through Sudan, the land of the Nubian Pharaohs. This expedition has been specially designed for CWRU and will be led by none other than our own Dr. Meghan Strong, Adjunct Assistant Professor, Classics and Research Associate at the Cleveland Museum of Natural History. Dr. Strong has deep ties with this region where she is also the Assistant Director at Nuri, a vast royal Nubian necropolis that is currently under excavation.

The trip route will follow the Nile River, the heartbeat of this arid region delving deep into the history of the ancient Nubian kingdoms that were once part of a thriving trade route for centuries influencing the religion, language and culture seen today. During this expedition you will visit archaeological sites rarely visited by tourists– pyramids and burial grounds at El-Kurru, Nuri and Meroe, Old Dongola where Coptic churches once stood, and Kerma which was once the capital of the Kingdom of Kush. Celebrate the arrival of new year under the starry desert skies with us.

Due to the nature of the destination and limited accommodations, space is limited and I encourage you secure your spot today by contacting our tour operator at (917) 686-2620/ [info@immersionjourneys.com](mailto:info@immersionjourneys.com) or by filling out the enclosed tour reservation form.

Sincerely,

*Karen Laurence.*

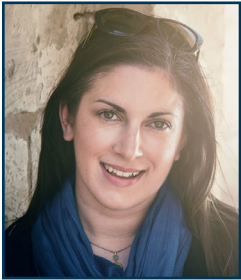
Karen A. Laurence, Ph.D

Director of Educational Programs & Faculty and Alumni Engagement

Laura and Alvin Siegal Lifelong Learning Program

Case Western Reserve University

*CWRU's Luminary Society members may receive additional discounts on CWRU Educational Travel programs. For further information on Luminary Society travel discounts only, please contact The Office of Strategic Giving or 216.368.4460.*



## STUDY LEADER:

### **Meghan Strong**

*Adjunct Assistant Professor, Classics;  
Research Associate, Cleveland Museum of  
Natural History*

Meghan completed her PhD in the Division of Archaeology at the University of Cambridge where she examined the

impact of lighting, environment and the senses on the ritual practices of the ancient Egyptians. She has trained as both an Egyptologist and an art historian and elements of both disciplines impact on her research. Meghan has lectured on archaeology and Egyptology throughout the UK and United States and has worked in Egypt for over a decade as a writer, photographer, and archaeologist.

Her photographic work has been featured on National Geographic, NBC, CNN and LiveScience. Meghan currently serves as an Assistant Director at Nuri, Sudan, an expansive cemetery used by the rulers of the ancient kingdom of Kush.

## TRIP HIGHLIGHTS

**Explore the Royal Necropolis** of Meroe and Nuri.

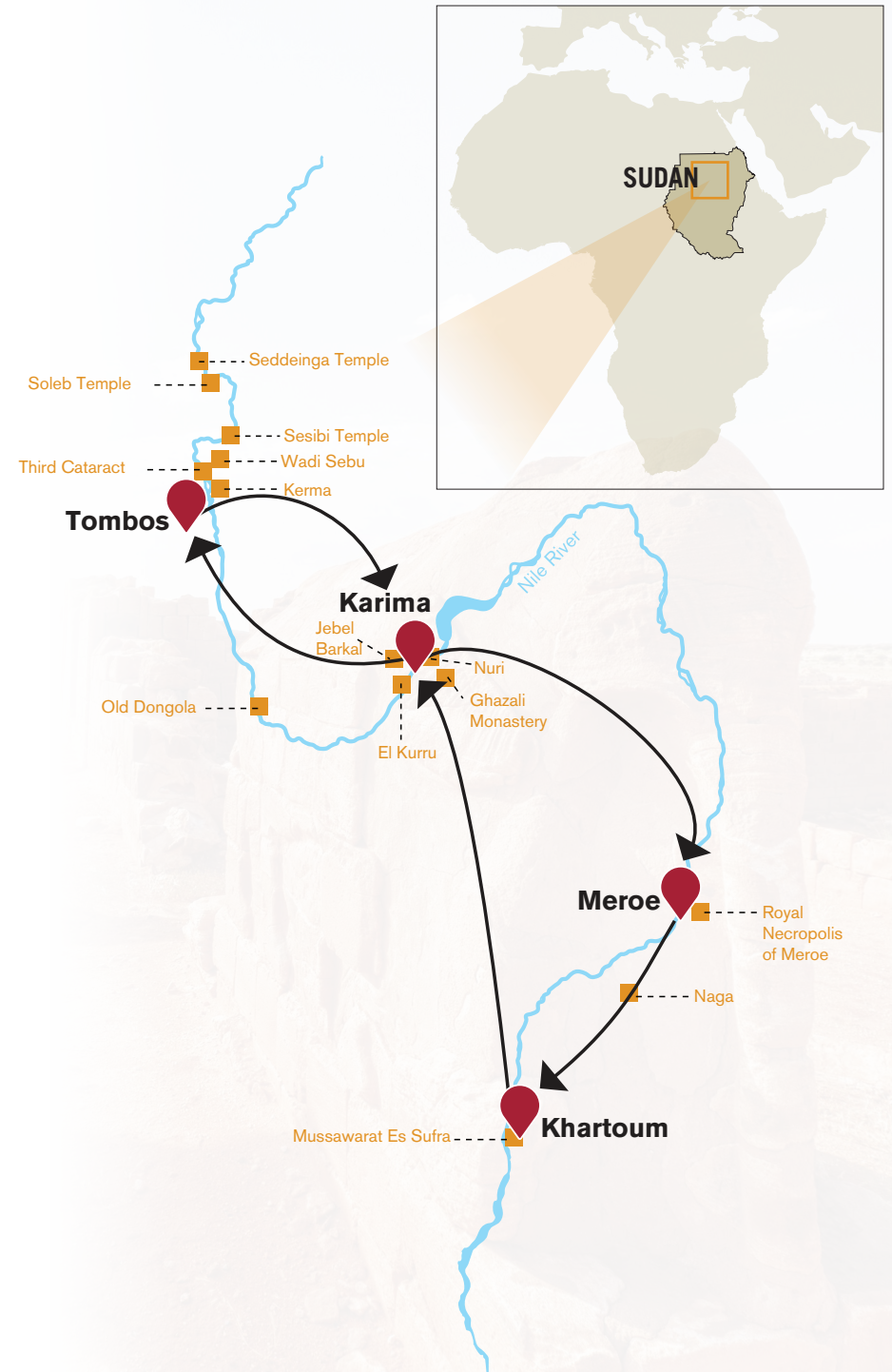
**Visit the Omdurman** souk filled with locally crafted wares.

**Enjoy a cruise** on the Nile- the life blood of this desert nation.

**Drive across** the expanse of the Bayuda Desert which played a crucial role in the formation of one of the world's first civilizations.

**Take a tour** of the capital city of Khartoum.

**Ring in the new year** under the starry desert skies.



# PROGRAM ITINERARY



## **December 28, 2022: Depart U.S.**

Board your flight to Khartoum, Sudan.

\*Early arrival into Khartoum is possible. Please contact Immersion Journeys for early arrival hotel options.

## **December 29: Arrive Khartoum, Sudan**

Arrive in Khartoum. Met at the airport and transferred to your luxury hotel.

*Overnight: Corinthia Hotel (no meals)*

## **December 30: Khartoum**

Trip briefing. Later, take a pleasant boat ride on the Nile to see the confluence between the Blue and the White Nile. It's a great way to shake off the jet lag and get an idea of the city and surrounding area. Time permitting, there may be an opportunity to see traditional Nuba Wrestling taking place.

Welcome dinner. *Overnight: Corinthia Hotel (B, D)*

## **December 31: Khartoum – Karima (~250 miles)**

Journey northward across the Western Desert. The route will go across a flat terrain with 360° vistas. There will be brief stops along the way including stopping at roadside "chai house" (tea houses) typically frequented by travelers. Arrive at Karima which is located at the foot of Jebel Barkal mountain.

Late evening new year eve celebration!

*Your accommodations has 22 air-conditioned twin rooms, all with private bathrooms and veranda. Overnight: Karima Nubian Rest House (B, L, D)*

## **January 1, 2023: Karima – Jebel Barkal – Necropolis of El Kurru**

Early departure to the foot of Jebel Barkal ("Holy Mountain" in Arabic), a UNESCO World Heritage site that's often referred to as "the Mount Olympus" of the Nubian kings. After lunch, travel to the ancient site of El-Kurru, a vast complex of tombs and pyramids. In the late afternoon, return to Karima to relax before dinner. *Overnight: Karima Nubian Rest House (B, L, D)*

## **January 2: Karima – Old Dongola – Tombos**

Visit the archaeological site of Old Dongola. This area is the central part of the Nubian region where remains of a Christian Coptic temple were discovered. The population in this area live in small villages among yellow sand dunes and speak a different language from the Arabs. Stop for lunch en route. Later, arrive in the village where the camp has been set up.

*(program itinerary continued)*

*The camp is located among the beautiful rock formations in the Tombos area and set up exclusively for groups. Big igloo tents (8'x8') with camp beds, mattresses, sheets and wool covers are set up. There is a dining tent for communal meals and private communal showers and western style toilets. The camp is fully staffed.*

*Overnight: Tombos Mobile Camp (B, L, D)*

#### **January 3: Tombos – Seddeinga – Temple of Soleb – Tombos**

Cross the Nile by a local ferryboat and continue north to the Sedeinga pyramids - a group of 80 small pyramids built around 1 BCE. Continue to the Temple of Soleb, arguably the most beautiful Egyptian temple in all of Sudan and rich with hieroglyphic inscriptions, bas-relief figures and elegant columns which is testimony of the Egyptian New Kingdom.

*Overnight: Tombos Mobile Camp (B, L, D)*

#### **January 4: Tombos – Wadi Sebu – Third cataract – Sai Island – Tombos**

In Sebu, one can see the richest sites of rock engravings in all of Sudan with hundreds of images from the prehistoric era to Egyptian times. Travel north on the eastern side of the Nile to visit the Third Cataract. For the river pilots of ancient Nubia, the cataract used to be a huge obstacle to navigate when trying to sail on the Nile River.

Next, visit the Island of Sai which is reached by a ferry boat. This is an important archaeological site where ancient remains from Kerma civilization, Egyptian and Christian culture existed. Here one can also see the old sandstone fort built by the Ottoman Empire.

*Overnight: Tombos Mobile Camp (B, L, D)*

#### **January 5: Tombos – Kerma – Karima.**

Visit to Kerma, the first capital of the Kingdom of Kush. Kerma is home to seven remarkable statues of the Kushite Pharaohs. Visit the museum created by the Swiss archaeological mission that displays the seven statues of the Black Pharaohs unearthed in 2003 as well as artifacts of the Kerma culture, and a section focusing on the Christian and Islamic history of the region.

Arrive in Karima in the late afternoon.

*Overnight: Karima Nubian Rest House (B, L, D)*

#### **January 6: Karima – Boat on the Nile – Nuri Necropolis**

This morning, take a pleasant cruise along the Nile followed by a visit to the archaeological site of Nuri, which was part of the capital of Napata of the Kushite kingdom. To date, some 82 tombs have been discovered at Nuri, with most incorporating a pyramid.

*Overnight: Karima Nubian Rest House (B, L, D)*

#### **January 7: Karima – Ghazali Monastery – Meroe**

Cross over the Nile to enter the Bayuda desert, to visit the Monastery of Ghazali. This is an area bounded by the loop formed by the Nile between the 4th and the 6th Cataract characterized by sharp black basalt mountains, most of them volcanic and typically cone-shaped. It is not uncommon to meet groups of Bisharin nomads, who live in familial groups in small huts made of intertwined branches close to the precious water wells, with their caravans and herds of camels and donkeys. Cross the Nile again by pontoon. These ferries are a hive of activity sharing space with people and livestock. One gets a view of more than 40 pyramids on the opposite shore which are part of the Royal Necropolis of Meroe.

*(program itinerary continued)*



Arrive in the evening at the camp.

*Meroe Camp's location gives a clear view of the renowned pyramids of Meroe and features 22 twin bedded tents. Each tented chalet is 172 square feet overlooking the pyramids and has its own verandah, private bathroom. The restaurant has a terrace on the top where guests can enjoy the sunset over the pyramids.*

*Overnight: Meroe Camp (B,L,D)*

#### **January 8: Meroe – Royal Necropolis of Meroe – Royal city – Meroe Camp**

Morning visit to the Meroe pyramids. Several pyramids stand out with their sharp shapes against the clear sky each one with its own funerary chapel with the walls decorated with bas-relief that show the king's life and offerings to the gods. Afternoon visit to the ruins of the royal city. Enjoy a sunset at the pyramids before returning to the camp.

*Overnight: Meroe Camp (B, L, D)*

#### **January 9: Meroe Camp – Musawwarat Es Sufra – Naga – Khartoum**

Today we visit two archaeological sites. The first, Naga, is a collection of ruins dating from the Meroitic Period, and its temples are a showcase of Kushite culture. Continue on to Musawwarat es-Sufra, a large Meroitic temple complex located in a valley. Most standing monuments, including the unique sacral complex of the Great Enclosure and the famous Lion Temple date from the Meroitic period (300 BC to 350 AD). Musawwarat was inscribed in the UNESCO World Heritage list in 2011.

Arrive in Khartoum in the late afternoon.

*Overnight: Corinthia Hotel (B, L, D)*

#### **January 10: Khartoum City Tour**

Cross the confluence between the Blue and the White Nile near the Presidential Palace where in 1885 General Gordon was beheaded by the Mahdi's troops who were fighting against British authority. Visit the Mahdi's tomb located in Omdurman, the old capital of Sudan as well as Khalifa's House (expected reopening in February 2021) dedicated to the Mahdi.

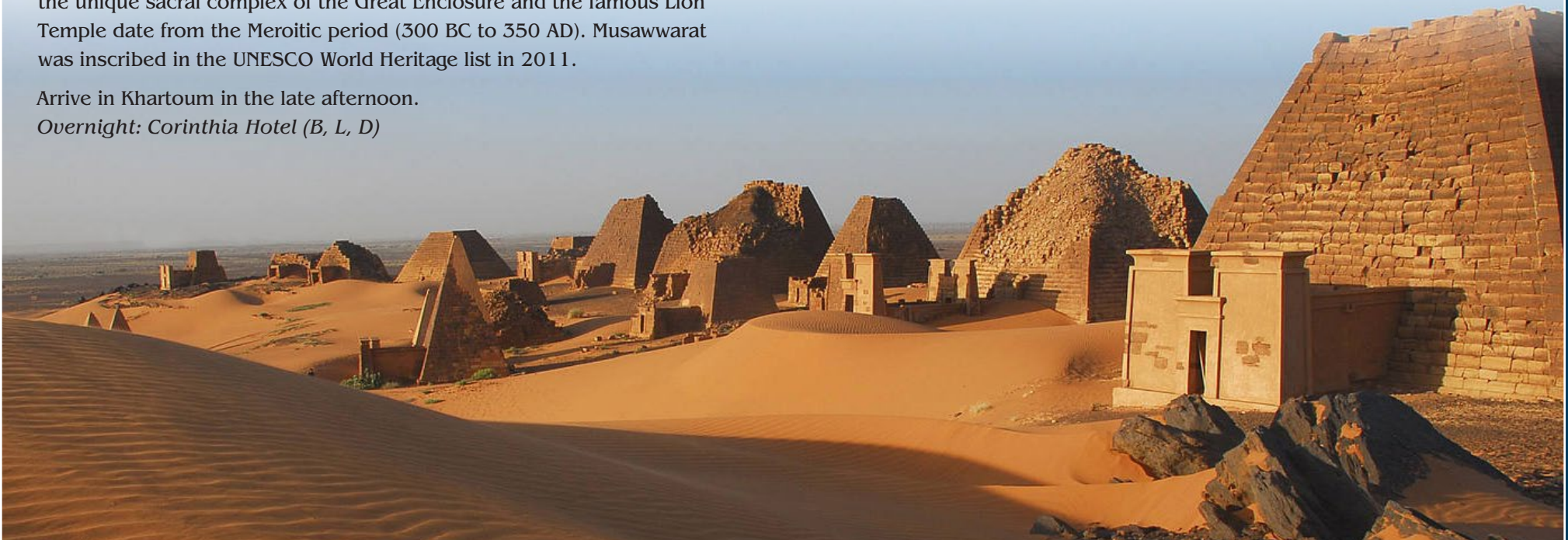
Afternoon visit to the National Museum (*currently under renovations and expected to open before the start of the trip*). The building and its surrounding gardens house the largest and most comprehensive Nubian archaeological collection in the world including objects from the Paleolithic through to the Islamic period originating from every site of importance in the Sudan.

**IMPORTANT NOTE:** *The order of the visits in Khartoum might change according to opening hours of the museums or moved to another day.*

*Overnight: Corinthia Hotel (B, L, D)*

#### **January 11: Depart**

Transfer to the airport and depart.





## GROUND COSTS\*

\$8,395 per person (double occ.)  
Single Room Supplement: \$1,600

### INCLUDES:

- 9 nights of superior or best-available accommodations; 4 nights at rustic tented camps.
- All site and monument entry fees.
- Sudan entry visa on arrival and visa assistance (*Note: Currently any passport having a stamp from Israel is prohibited from entering Sudan. This rule is subject to change by the Sudanese Government.*)
- All airport meet/greet and transfers.
- 12 breakfasts, 12 lunches (sit down and/or picnic boxes), 10 dinners. Lunches and dinners will include 1 mineral water per meal per guest
- Welcome dinner (Day 2) and Farewell dinner (Day 13) plus 2 soft drinks. (*Note: Sudan does not allow any alcohol sale/ consumption in accordance with their religious views. No alcohol can be brought into the country.*)
- Transport in 4x4 Toyota land cruisers (maximum 3 guests per car).
- All **pre-paid** gratuity to local guide(s), staff, drivers, hotels.
- Full time English speaking tour director and Guides.

### EXCLUDES:

- International airfare
- Vaccinations
- Cost of pre-departure COVID testing (required by airlines and Sudan airport and health ministry authorities for entry.)
- **Mandatory** travel insurance\* including air evacuation to your home country/ state/ city. *\*Guests should have enough coverage for additional in-country COVID testing and any necessary hospitalization/ treatment/ isolation/ transport.*
- Telephone, fax, WiFi, local Sudanese SIM cards and air time.
- Laundry and dry cleaning.
- Any other items of personal nature.

*Due to the nature of the areas we will be visiting, this program involves some walking on uneven terrain, rocky areas or up and down stairs that may be steep or without handrails. On some days, it also covers long distances in 4x4 vehicles (maximum 3 guests per vehicle) which are the only way to get close to the monuments and sites. Every effort will be made to ensure your comfort; however, all participants are expected to be physically active and not be an impediment to others on excursions. Participants who are not able to walk unassisted are kindly advised not to join this tour unless accompanied by an able-bodied companion who will be able to assist you at all times. If you have any questions about your ability to participate, we suggest that you visit your personal physician with this brochure in hand, and discuss whether or not this program is appropriate for you.*

# TOUR RESERVATION FORM

To reserve a space, please complete and return this form with your deposit of \$1,000 payable to **Immersion Journeys. Mail to 455 Main Street, Suite 5M, New York, NY 10044/** E-mail: info@immersionjourneys.com. We will not process your deposit until you are assigned a place on the tour. Please contact 917-686-2620 or 302-743-7005 if you have any questions about the registration process.

Enclosed is my/our check of \$\_\_\_\_\_ (\$1,000 per person)

Please charge my/our deposit check of \$\_\_\_\_\_ to my:  VISA  MasterCard  American Express

Name: \_\_\_\_\_ Card #: \_\_\_\_\_ Expiration Date: \_\_\_\_\_ CVV: \_\_\_\_\_

The balance of the trip is due on August 31, 2022 and is payable by check only. Credit card payments for the balance will be charged a 3.5% fee.

Authorized Card Holder Signature: \_\_\_\_\_ Date: \_\_\_\_\_

## Guest Information

**Name 1 (as on passport)** \_\_\_\_\_

**Name 2 (as on passport)** \_\_\_\_\_

Passport # \_\_\_\_\_ Nationality \_\_\_\_\_

Passport # \_\_\_\_\_ Nationality \_\_\_\_\_

Issue Date (mm/dd/yy) \_\_\_\_\_ Expiration (mm/dd/yy) \_\_\_\_\_

Issue Date (mm/dd/yy) \_\_\_\_\_ Expiration (mm/dd/yy) \_\_\_\_\_

Date of Birth (mm/dd/yy) \_\_\_\_\_ CWRU Affiliation \_\_\_\_\_

Date of Birth (mm/dd/yy) \_\_\_\_\_ CWRU Affiliation \_\_\_\_\_

Street Address \_\_\_\_\_

Street Address \_\_\_\_\_

City: \_\_\_\_\_ State \_\_\_\_\_ Zip \_\_\_\_\_

City: \_\_\_\_\_ State \_\_\_\_\_ Zip \_\_\_\_\_

Home Phone \_\_\_\_\_ Mobile \_\_\_\_\_

Home Phone \_\_\_\_\_ Mobile \_\_\_\_\_

Email (*write clearly*) \_\_\_\_\_

Email (*write clearly*) \_\_\_\_\_

I prefer single accommodations (*Extremely limited and only on first come basis*)

I plan to room with \_\_\_\_\_  Double  Twin (separate beds)

I prefer to share accommodations (if roommate is not available, I will pay the single rate)

Emergency Phone # and Contact Name (during trip): \_\_\_\_\_

Please indicate any special needs (diet, health, mobility, etc.): \_\_\_\_\_

*By submitting my/our deposit, I/we am/are registering for the above trip program and have read and agreed to the Immersion Journeys Participant's Agreement. I/we understand that portions of this trip will range from being moderately strenuous to difficult, will include some long drives and may include unpaved paths, steps and will be outdoors. Travelling will be in 4x4 vehicles often over long distances. I/we also agree to be in good physical shape and will be prepared to walk without a full time walking aid or need a wheelchair. I / we also take responsibility for purchasing our own mandatory supplemental travel insurance including medical coverage and medical evacuation coverage and will provide a copy of the policy to Immersion Journeys.*

\_\_\_\_\_  
Signature

\_\_\_\_\_  
Date

\_\_\_\_\_  
Signature

\_\_\_\_\_  
Date



# PARTICIPANT'S AGREEMENT

By signing our tour reservation form, or otherwise indicating your assent in writing, you agree to the terms and conditions set forth in this document. These terms and conditions apply to the Tour, the itinerary for the Tour and payment for the Tour

**INTRODUCTION:** These are the terms and conditions applicable to the tour packages provided by Immersion Journeys LLC, Engaging Journeys, Inc., Case Western Reserve University (collectively "Immersion Journeys", "Engaging Journeys", "Case Western Reserve University" "we", "us" and "our"). The terms "client" "you" and "your" refer to each person who purchases and/or uses a tour package provided by Immersion Journeys.

**RESERVATIONS AND PAYMENTS:** A prepayment deposit \$1,000 along with a completed and signed Tour Reservation Form, and copy of passport are required in order to confirm your reservation. Upon receipt of these forms and your deposit, we will confirm your trip. This Agreement. The signed Reservation form and the signed Credit Card Authorization section of the Tour Reservation Form are all part of your agreement with us.

The balance of your Tour cost is due of 120 days prior to departure.

**TRAVEL INSURANCE:** Travel insurance is mandatory. In the event that you must cancel your participation in a travel Tour, trip cancellation insurance may be the only source of reimbursement. Trip cancellation insurance is available for comprehensive coverage of such expenses in conjunction with cancellation due to illness or accident, and damaged or lost luggage. We will send you an application upon receipt of your reservation. In addition, medical evacuation coverage may be required as a condition of booking. **Please contact Sarah Doody at [sxd618@case.edu](mailto:sxd618@case.edu) or 904-432-3141 with any questions.**

**CANCELLATION AND REFUND POLICY:** Our cancellation charges are based on the stringent payment policies of our suppliers of local services and therefore represent a reasonable estimate of our loss. Cancellation charges are expressed as a percentage of your total trip cost (excluding commercial airfare) and also depend on the day you cancel and the day of your scheduled departure from your home. Our cancellation charges are in addition to whatever the airline may charge you:

Penalty	Number of Days of Advance Written Notice
\$750	One Hundred and Twenty (120) or more
50 percent (50%)	Between one hundred and twenty (120) and sixty (60)
One hundred percent (100%)	Less than sixty (60)

There is no refund for unused portions of a tour once it has commenced, and you are solely responsible for costs incurred by you due to missed, cancelled or delayed transportation. Your decision not to participate on the Tour due to State Department or Centers for Disease Control advisories or warnings, fear of travel, or for any other reason will be deemed a cancellation. If a flight or other delay for any reason prevents you from joining the Tour on the Tour start date, you will be considered a no-show. No refunds will be available, but you may join the Tour late if you wish.

Commercial airline tickets must be paid in full at the time of ticketing. Airline cancellation charges are set forth on the invoice.

**NOT INCLUDED:** Taxes; passport, visas and associated fees; personal expenses such as laundry, telephone calls and Internet access; accident/sickness, trip cancellation, and baggage insurance; gratuities to ship and hotel personnel; optional sightseeing excursions; baggage

charges on aircraft; local departure air/airport tax(es); airfare and associated local taxes, airport facility and security taxes and federal inspection fees not listed as included in the travel Tour; transfers and baggage handling to/from airport/hotel/ship on day(s) of arrival and/or departure; any overnight on land due to flight schedule(s); meals, alcoholic or other beverages and all other services not specifically mentioned as included in the travel Tour

**AIRFARE:** Airfare is subject to change and availability and, depending on the fare basis, Immersion Journeys.

**BAGGAGE:** Luggage allowance policies are set by the airlines and may change without notice. Baggage is at owner's risk throughout the trip. Airlines, buses, vans and other modes of transportation may all have weight and size restrictions on luggage. It is your responsibility to comply with all baggage restrictions

**PRICE INCREASES:** Destination countries increase their VAT taxes from time to time. Some suppliers impose energy surcharges or other price increases. Prices are also subject to increase due to currency fluctuations. Any such increases will be applied to your total due at the time of final payment.

**PASSPORTS, VISAS, and OTHER ENTRY REQUIREMENTS:** International travel requires a passport valid 6 months beyond your intended return travel date. In most cases, you will also need to have multiple consecutive blank visa pages within your passport (the number varies depending on the destination(s)). Many destinations also require that visas be obtained prior to travel. If one parent or guardian plans to bring a minor child without the other parent or parents, some countries and airlines have strict documentation and permission requirements. Birth certificates may be required for children under 18. Some nations require proof of vaccinations for all travelers. Please speak with us if you are unsure about the visa requirements for your travel destination. You are solely responsible for complying with passport, visa, and other foreign entry requirements and vaccinations.

**RESPONSIBILITY AND ASSUMPTION OF RISK:** Immersion Journeys, its employees, shareholders, subsidiaries, affiliates, officers, directors, successors, and assigns (collectively "Immersion Journeys"), do not own or operate any entity which is to or does provide goods or services for your Tour including, for example, lodging facilities, airline, vessel, or other transportation companies, safari or guide services, local ground or safari operators, providers or organizers of optional excursions, food service or entertainment providers, etc. All such persons and entities are independent contractors. As a result, Immersion Journeys is not liable for any negligent or willful act, failure to act, financial failure or other defaults of any such person, entity, supplier or any other third party.

In addition and without limitation, Immersion Journeys is not responsible for any injury, financial or other loss, death, inconvenience, delay, or damage to person or property in connection with the provision of any goods or services whether resulting from, but not limited to, acts of God or force majeure, acts or orders of government, acts of war or civil unrest, insurrection or revolt, bites from or attacks by wild or domestic animals, insects or pests, strikes or other labor activities, criminal or terrorist activities of any kind or the threat thereof, sickness, illness, epidemics or the threat thereof, the lack of availability of or access to medical attention or the quality thereof, overbooking or downgrading of accommodations, mechanical or other failure of airplanes, vessels or other means of transportation, or for

any failure of any transportation mechanism to arrive or depart timely or safely. Further, I release Immersion Journeys from its own negligence and assume all risk thereof.

We have no special or unique knowledge regarding the financial condition of the suppliers of services, unsafe conditions, health hazards, weather hazards, or climate extremes at locations to which you may travel. For useful information regarding your destination, we strongly recommend reviewing the destination-specific information at [www.travel.state.gov](http://www.travel.state.gov), and the Centers for Disease Control at [www.cdc.gov/travel](http://www.cdc.gov/travel).

If due to weather, flight schedules or other uncontrollable factors, you are required to spend an additional night(s), you will be responsible for your own hotel, transfers and meal costs. The right is reserved to decline to accept as a Tour participant, or remove from a Tour, without refund, any person Immersion Journeys judges to be incapable of meeting the rigors and requirements of participating in the activities, or who is abusive to other Tour participants, leaders or third parties, or who Immersion Journeys determines to detract from the enjoyment of the Tour by others. Specific room assignments are within the sole discretion of the lodge or hotel.

**Assumption of Risk of Exposure to COVID-19:** you agree to fully accept all known and unknown risks, including the potential risk of exposure to respiratory illnesses or other illnesses, diseases, or conditions, including but not limited to the coronavirus known as COVID-19. The coronavirus COVID-19 is primarily transmitted via exhaled respiratory droplets, most often through coughing, sneezing and breathing in close proximity to another person. These droplets can travel up to six feet and are more commonly transmitted between persons rather than from equipment to persons. You understand and agree that (a) COVID-19 is extremely contagious and there is an inherent risk of exposure to COVID-19 in any place where people are present; (b) no precautions, including the protocols that will be implemented as part of the trip, can eliminate the risk of exposure to COVID-19; (c) people of all ages and health conditions, including healthy young people, have been adversely affected by COVID-19; (d) certain people have been identified by public health authorities as having greater risk based on their age or underlying medical conditions; (e) exposure to COVID-19 can result in being subject to quarantine requirements, illness, disability, and other short-term and long-term health effects, including death, regardless of a person's age of health condition. You understand and agree to hold the Immersion Journeys, its officers, vendors and suppliers harmless and not liable for any real or perceived symptoms of COVID-19 or any other disease, illness, or condition, nor for exacerbating any existing symptoms of any illness, disease or condition, and you fully agree to accept these and all other known and unknown risks of receiving services from Immersion Journeys.

**CANCELLATIONS AND POSTPONEMENTS BY IMMERSION JOURNEYS:** Immersion Journeys reserves the right to change the itinerary, the lodges or hotels utilized or any Tour features at any time and for any reason, with or without notice, and Immersion Journeys shall not be liable for any loss of any kind as a result of any such changes. Immersion Journeys may cancel or postpone a Tour (or an option) for any reason whatsoever. Seasonal changes (for example, from low to high season) may result in higher prices. In any event, for cancellations (or postponements) based upon acts of God or force majeure, acts or orders of government, epidemics or the threat thereof, pandemics, terrorism or the threat thereof, strikes or labor disturbances, demonstrations, riots or civil unrest, criminal activity, supplier default or insolvency, or other similar circumstances, its sole obligation is to issue credits in the full amount of moneys paid to Immersion Journeys, but only to the extent its suppliers are crediting Immersion Journeys with those monies paid by Immersion Journeys to them. Under no circumstances is Immersion Journeys obligated to refund the cost of any

purchased travel insurance. Immersion Journeys is not required to cancel any Tour for any reason including without limitation, United States Department of State, Centers for Disease Control, World Health Organization or other Warnings or Advisories of any kind. Immersion Journeys is not responsible for fees assessed by air carriers resulting from operational and/or itinerary changes, even if Immersion Journeys makes the flight arrangements or cancels the Tour. Immersion Journeys reserves the right to substitute lodges, hotels, vessels or attractions for those listed in the tour description if same is required by circumstances beyond its control or for the convenience or well-being of clients.

**OTHER TAXES AND FEES:** Some governments charge departure taxes and/or fees. These fees are the responsibility of each passenger traveling to the designated country and are not included unless stated.

**FORCE MAJEURE:** Immersion Journeys, Engaging Journeys, Case Western Reserve University assumes no responsibility for any personal injury, property damage, financial or other loss, accident, delay, inconvenience, or irregularity which may be occasioned by reason of any matter beyond our control including but not limited to a delay or cancellation of a flight that causes you to miss all or any portion of the Tour, acts of God, acts or orders of government, epidemics, war, terrorist acts, riots, disaster, weather events, or strikes.

**INDEMNIFICATION:** You shall indemnify, defend and hold harmless Immersion Journeys, Engaging Journeys, Case Western Reserve University and its officers, employees, directors, suppliers and agents, in their individual capacities or otherwise, from and against any Losses arising out of: (i) your negligence; (ii) your failure to comply with applicable law; or (iii) your failure to comply with these terms conditions.

**PHYSICAL ACCESSIBILITY:** All Tours require physical independence and mobility. Any physical or mental condition that may require special medical attention or physical assistance (for example, the need for a wheelchair) must be reported in writing when you make your reservation. Participants must be able to embark or disembark vans or motor coaches alone or with minimal assistance from your traveling companion and climb stairs and step over raised thresholds without assistance. Participants requiring assistance must travel with a companion who will be responsible for handling equipment. Please understand that the Americans with Disabilities Act does not apply outside the United States.

**CONDUCT DURING TOUR:** You are also responsible for respecting the authority and following the directions of the tour guide and the laws of the countries in your itinerary. We may exclude you from participating in all or any part of the tour if, in our sole discretion, your condition or behavior renders you unfit for the tour or unfit for continuation once the tour has begun. Unfitness may include, without limitation, any behavior that, regardless of its cause, is inappropriate or offensive or interferes with the delivery of tour services, or may constitute a hazard or embarrassment. In such case, our liability shall be strictly limited to refund of the recoverable cost of any unused portion of the tour. Should you decide not to participate in certain parts of the tour or use certain goods included in the tour, no refunds will be made for those unused parts of the tour or goods.

**MEDICAL PROXY:** If you are unable to authorize your own medical attention and treatment, you authorize Immersion Journeys or its subcontractors or agents to authorize medical attention and treatment on your behalf. You agree to hold harmless and release Immersion Journeys from any liability for medical attention arranged or not arranged on your behalf. Immersion Journeys assumes no liability regarding provision of medical care or evacuation services.

**CHANGES:** Changes in this Agreement may be made only in writing, signed by an officer of Immersion Journeys.

**BINDING ARBITRATION:** Any dispute concerning, relating or referring to this Agreement, the brochure or any other literature concerning the Tour, or the Tour itself, shall be resolved exclusively by binding arbitration pursuant to the Federal Arbitration Act, 9 U.S.C. Sections 1-16, either according to the then existing Commercial Rules of the American Arbitration Association (AAA) or pursuant to the Comprehensive Arbitration Rules & Procedures of the Judicial Arbitration and Mediation Services, Inc. (JAMS). Such proceedings will be governed by substantive (but not procedural) State of New York law and will take place in New York City, New York. The arbitrator and not any federal, state, or local court or agency shall have exclusive authority to resolve any dispute relating to the interpretation, applicability, enforceability, conscionability, or formation of this contract, including but not limited to any claim that all or any part of this contract is void or voidable. Please understand that by agreeing to these terms and conditions, the participant and Immersion Journeys are waiving the right to a trial by jury. Any arbitration commenced against Immersion Journeys must be on behalf of only the signatory to this Agreement and his or her immediate family members who travelled with signatory, such as a spouse or child. Under no circumstances can participant be part of a class or other joint action.

*By signing the Tour Registration form, you agree to the terms of this Terms and Conditions, Release of Liability, Assumption of Risk and Binding Arbitration Agreement. Your Agreement extends to any tour to which you may transfer. If you party includes a person under 18, then you represent that you are that person's parent or legal guardian.*

