

# Courses & Lectures

September–December 2022



Join us to celebrate!  
*See page 2 for  
information.*

**In-Person  
and Remote**  
Learning  
Opportunities



THE LAURA & ALVIN SIEGAL  
LIFELONG LEARNING  
PROGRAM

## REGISTRATION

### REGISTER ONLINE

Register online through our secure site at  
**[case.edu/lifelonglearning](https://case.edu/lifelonglearning)**

### REGISTER BY MAIL

Return the registration form in the back of this catalog to:  
The Laura and Alvin Siegal Lifelong Learning Program  
Case Western Reserve University  
10900 Euclid Ave.  
Cleveland, OH 44106-7116

### REGISTER BY PHONE

**216.368.2090** (Campus office) or  
**216.368.2091** (Beachwood office)

### POLICIES

Registration policies including course withdrawals, cancellations and refunds can be found on our website.  
Visit **[case.edu/lifelonglearning/registration-policies](https://case.edu/lifelonglearning/registration-policies)**

### MEMBERSHIP

An optional membership model offers reduced fees for courses, lectures and most ticketed events among other perks. Details and pricing are available on our website.  
Visit **[case.edu/lifelonglearning/membership](https://case.edu/lifelonglearning/membership)**

## HOW TO REACH US

Case Western Reserve  
University Campus  
p 216.368.2090  
f 216.368.1861

Siegal Lifelong Learning  
Beachwood Office  
p 216.368.2091  
f 216.368.1003

Email:  
[lifelonglearning@case.edu](mailto:lifelonglearning@case.edu)

Website:  
[case.edu/lifelonglearning](https://case.edu/lifelonglearning)

Mailing Address:  
The Laura and Alvin Siegal  
Lifelong Learning Program  
Case Western Reserve University  
10900 Euclid Ave.  
Cleveland, OH 44106-7116

Landmark Centre Building  
25700 Science Park Drive  
Suite 100  
Beachwood, OH 44122

Visitors and Deliveries:  
Thwing Center, Room 153  
11111 Euclid Ave.  
Cleveland, OH 44106-7116

## DEAR FRIENDS,

In 2012, Case Western Reserve University and The Laura and Alvin Siegal College of Judaic Studies combined their adult education programs to form a new initiative, the **Laura and Alvin Siegal Lifelong Learning Program at CWRU**. This new entity was designed to host an array of continuing education which has evolved to include personal enrichment courses and lectures in general and Jewish Studies; continuing professional studies boot camps and certificate programs; and a travel program for alumni and friends. Many of these programs have been developed over the last 10 years, but some predate the formation of Siegal Lifelong Learning. These legacy programs that still run today include The Association for Continuing Education (ACE), The Course Audit Program (CAPSC) and the Origins Science Scholars series.

Over the last decade, Siegal Lifelong Learning grew and flourished under the leadership of Brian Amkraut, who was Executive Director from 2012–2021. Today, Siegal continues to expand its educational offerings while reaching broader audiences locally, nationally and internationally, always seeking to improve operations along the way.

On **Wednesday, September 14 at 7 p.m.**, we plan to mark Siegal's 10 years of achievements with a series of 10-minute lectures from some of our top instructors. We hope you'll be there to celebrate with us. See page 2 for more information.

In addition to our 10<sup>th</sup> anniversary showcase, we have a robust line up of courses and lectures for you this fall listed in the following pages. We look forward to learning together.

Sincerely,

**Karen Laurence**  
Director of Educational  
Programs & Faculty and  
Alumni Engagement

**Andrea Kushnick Rubin**  
Director of Program  
Outreach and Community  
Engagement

**Gila Silverman**  
Director of Jewish  
Lifelong Learning

## CONTENTS

Art, Music and Theater .....	3
Hebrew .....	5
History and Culture .....	6
Jewish Studies .....	10
Literature and Writing .....	16
Philosophy and Religion .....	18
Politics and Contemporary Topics .....	19
Science and Technology .....	20
Lakeland Community College.....	7
Travel .....	12
Senior Scholars.....	21
Membership and Registration .....	24
Registration Form .....	25

**Averil Braden**  
Department Assistant

**Sarah Doody**  
Travel Consultant

**Jamaal Hill**  
Project Manager,  
Continuing  
Professional Studies

**Karen Laurence**  
Director of Educational  
Programs & Faculty  
and Alumni  
Engagement

**Lorraine Nelson**  
Program Administrator

**Jacqueline Pinto**  
Program Manager,  
INSOFÉ

**Andrea Kushnick Rubin**  
Director of Program  
Outreach and  
Community  
Engagement

**Gila Silverman**  
Director of Jewish  
Lifelong Learning

**Felicia Westbrooks**  
Program Administrator





## 10TH ANNIVERSARY SHOWCASE & CELEBRATION



Join Siegal Lifelong Learning for an engaging evening of short lectures from popular instructors in celebration of Siegal's 10th anniversary. Dessert reception to follow.

**WEDNESDAY, SEPTEMBER 14 at 7 p.m.**

TINKHAM VEALE UNIVERSITY CENTER

Price: \$5/person. Parking Included.

For more information, registration and ways to support Siegal Lifelong Learning, visit [case.edu/lifelonglearning/anniversary](https://case.edu/lifelonglearning/anniversary) or call 216.368.2091.

*In honor of our 10th anniversary, consider making Siegal Lifelong Learning a part of your personal legacy. For information on bequests, charitable IRA rollovers, donor advised funds and other gift plans, please contact [donorrelations@case.edu](mailto:donorrelations@case.edu) or call 216.368.8640.*



THE LAURA & ALVIN SIEGAL  
LIFELONG LEARNING  
PROGRAM

# COURSES AND LECTURES

## Art, Music and Theater

### IN-PERSON COURSE

#### SOCIAL CONSCIENCE AND THE BROADWAY MUSICAL

Arnold Hirshon, Vice Provost and Lindseth Family University Librarian, CWRU (retired)

**Fridays, September 9–30  
10–11:30 a.m. ET**

This course will address the importance of community, religious freedom, civil rights, business ethics, labor relations, politics, and government corruption as recurring themes throughout the history of musical theater. The course explores both shows that were hits and continue to be performed today, as well as flops and shows that have become dated or forgotten. The shows were written both by well-known and unknown composers and lyricists. Interpreting social conscience through the history of the American musical is a unique means to understand our national values and priorities through a medium that aims to educate while entertaining an audience.

**Member Price: \$70 | Nonmember Price: \$85**

Landmark Centre Bldg.,  
25700 Science Park Dr., Beachwood

### IN-PERSON LECTURE

#### WHAT'S IN A CONCERT?

Debra Nagy, Artistic Director, Les Délices

**Tuesday, September 13  
noon–1:30 p.m. ET**

The experience of live music – whether shared with hundreds of other people in a concert hall or enjoyed among close friends within the confines of a living room – is truly life-giving. But, forget dressing up, staying quiet, and waiting to clap. Once upon a time, concert-going was a long and (sometimes) rowdy affair complete with food, drink, friends, and perhaps a few tomatoes thrown in for good measure. In this lecture, we'll consider the roots of concert etiquette in the 17th, 18th, and 19th centuries. How were the first concert series different from those we know today? What role did individual patrons play? Who was in the audience and how did they behave? When and how did traveling virtuosos become a phenomenon? And how do YOU think we can make concert going more inherently fun today?

**Member Price: \$15 | Nonmember Price: \$20**

*Lunch included in cost of lecture.*

The Normandy, 22701 Lake Road, Rocky River

### IN-PERSON LECTURE

#### WHAT'S IN A CONCERT?

Debra Nagy, Artistic Director, Les Délices

**Friday, September 16  
noon–1:30 p.m. ET**

The experience of live music – whether shared with hundreds of other people in a concert hall or enjoyed among close friends within the confines of a living room – is truly life-giving. But, forget dressing up, staying quiet, and waiting to clap. Once upon a time, concert-going was a long and (sometimes) rowdy affair complete with food, drink, friends, and perhaps a few tomatoes thrown in for good measure. In this lecture, we'll consider the roots of concert etiquette in the 17th, 18th, and 19th centuries. How were the first concert series different from those we know today? What role did individual patrons play? Who was in the audience and how did they behave? When and how did traveling virtuosos become a phenomenon? And how do YOU think we can make concert going more inherently fun today?

**Member Price: \$5 | Nonmember Price: \$10**

Landmark Centre Bldg.  
25700 Science Park Dr., Beachwood

### IN-PERSON COURSE

#### BUILDING CLEVELAND'S COLLECTION: FROM THE MUSEUM'S BEGINNINGS TO THE KEITHLY COLLECTION

Professional Staff

**Tuesdays, September 27–November 1  
1–2 p.m. ET**

Every museum collection has a story to tell. This course offers a critical look at how benefactors have helped shape the collection of the Cleveland Museum of Art. Using the CMA's expansive holdings as a model, audiences will gain an understanding of how art museum collections are built, and how collecting patterns and priorities have changed over time. This course will also include a session on The Keithly Collection, an exhibition that celebrates the extraordinary gift of 100 Impressionist and Modernist works of art to the museum by Clevelanders Joseph P. and Nancy F. Keithly to the Cleveland Museum of Art – the most significant gift since the bequest of Leonard C. Hanna Jr. in 1958.

**Member Price: \$92 | Nonmember Price: \$112**

Cleveland Museum of Art

# COURSES AND LECTURES

## IN-PERSON COURSE

### FILM NOIR AND JAMES M. CAIN

Terry Meehan, Instructor of Lifelong Learning

**Tuesdays, October 4–November 8**  
**1–3 p.m. ET**

Film Noir, which emerged as a cinematic style in the 1940s, first came to life on the pages of the “hardboiled” writers of the previous decade. One of them was James M. Cain. Two of his novels, *The Postman Always Rings Twice* and *Double Indemnity*, were adapted for the screen in the mid-1940s and provide textbook examples of the genre. But what is Film Noir? We will see some fascinating film clips from experts, but we will come to our own conclusions after we read and discuss each literary work, followed by a screening and discussion of the film adaptations.

Read: *The Postman Always Rings Twice* and *Double Indemnity*, James M. Cain

**Member Price: \$96 | Nonmember Price: \$112**

Landmark Centre Bldg.  
25700 Science Park Dr., Beachwood

*This course is offered with the generous support of the Association for Continuing Education.*

## IN-PERSON COURSE

### ART OF THE 1960s

Carol Salus, Professor Emerita, Art History,  
Kent State University

**Fridays, October 7–November 11**  
**10–11:30 a.m. ET**

This course, with an initial look into key figures of the 1950s, will cover a sampling of movements during this prosperous decade of the 1960s as well as contemporaneous European responses. In addition, a biographical approach to the works of Roy Lichtenstein and Andy Warhol will provide important insights into their works. The 1960s is one of the most fascinating decades in art history of the last century: some artists focus on news events with photographs of key moments, some on purified reductive forms in elegant metals, while others long for the untouched lands of the West by the use of actual earth in their vast projects.

**Member Price: \$105 | Nonmember Price: \$130**

Landmark Centre Bldg.  
25700 Science Park Dr., Beachwood

## IN-PERSON COURSE

### JAZZ – FROM ITS ORIGINS TO THE PAST

Paul Ferguson, Senior Instructor, Music, CWRU

**Thursdays, October 13–November 17**  
**1:30–3:30 p.m. ET**

Jazz History is American History. Join us as we dig into the roots of jazz, its explosion in the 1920s and the swing era and its eventual transition into art music. Special emphasis on Jelly Roll Morton, Louis Armstrong, Duke Ellington, Miles Davis, and even some music from the instructor.

**Member Price: \$80 | Nonmember Price: \$85**

Landmark Centre Bldg.  
25700 Science Park Dr., Beachwood

✕ Senior Scholars – See page 21 for full program







## Hebrew

**Conversational Hebrew** teaches students to communicate in Israel's native language: to be able to read Israeli newspapers, and enjoy Hebrew literature, songs, and television. **Classical Hebrew** classes focus on learning the original Hebrew appearing in the Bible.

**Member Cost: \$210**  
**Nonmember Cost: \$230**

### REMOTE COURSES

#### ADVANCED BEGINNER CONVERSATIONAL HEBREW

Leah Cooper, Hebrew Language Instructor

**Mondays, September 12–December 19**  
 (No Class September 26, October 10 or 17)  
**1–3 p.m. ET**

#### INTERMEDIATE CONVERSATIONAL HEBREW

Leah Cooper, Hebrew Language Instructor

**Tuesdays, September 6–December 20**  
 (No Class September 27, October 4, 11, or 19)  
**6:30–8:30 p.m. ET**

#### INTERMEDIATE CONVERSATIONAL HEBREW

Rivka Taub, Hebrew Language Instructor

**Wednesdays, September 7–December 14**  
 (No Class October 5 or 12, November 23)  
**1–3 p.m. ET**

#### INTERMEDIATE CONVERSATIONAL HEBREW

Leah Cooper, Hebrew Language Instructor

**Thursdays, September 8–December 8**  
 (No Class October 13, November 24)  
**10 a.m.–noon ET**

#### ADVANCED HEBREW LITERATURE

Judith Shamir, Hebrew Language Instructor

**Tuesdays, September 6–December 20**  
 (No Class September 27, October 4, 11, or 19)  
**10 a.m.–noon ET**

#### ADVANCED CONVERSATIONAL HEBREW

Rivka Taub, Hebrew Language Instructor

**Tuesdays, September 6–December 20**  
 (No Class September 27, October 4, 11, or 19)  
**10 a.m.–noon ET**

#### ADVANCED CONVERSATIONAL HEBREW

Judith Shamir, Hebrew Language Instructor

**Thursdays, September 8–December 8**  
 (No Class October 13, November 24)  
**10 a.m.–noon ET**

#### ADVANCED CONVERSATIONAL HEBREW

Rivka Taub, Hebrew Language Instructor

**Thursdays, September 8–December 8**  
 (No Class October 13, November 24)  
**6:30–8:30 p.m. ET**

#### CLASSICAL HEBREW

#### ADVANCED BEGINNER CLASSICAL HEBREW

Holly Litwin, Hebrew Language Instructor

**Thursdays, September 8–December 8**  
 (No Class October 13, November 24)  
**6:30–8:30 p.m. ET**

# COURSES AND LECTURES

## History and Culture

### IN-PERSON COURSE

#### A CENTURY OF KING TUT

Meghan Strong, Adjunct Assistant Professor,  
Classics, CWRU

**Wednesdays, September 7–October 5**  
**1:30–3:30 p.m. ET**

One hundred years ago the tomb of Tutankhamun was uncovered in Luxor, Egypt. This discovery revolutionized archaeology, catapulted Howard Carter onto the world stage, and shed light on a minimally understood period of ancient Egyptian history. We will explore these stories, among others, through an analysis of some of the “wonderful things” found in Tut’s tomb.

**Member Price: \$80 | Nonmember Price: \$85**

Landmark Centre Bldg.  
25700 Science Park Dr., Beachwood

✕ Senior Scholars – See page 21 for full program

### IN-PERSON COURSE

#### WOMEN’S RIGHTS IN AMERICA 1923–2022: THE HISTORY OF THE ERA

Einav Rabinovitch-Fox, Visiting Instructor, History, CWRU

**Thursdays, September 8–October 6**  
**1:30–3:30 p.m. ET**

2023 will mark a hundred years since the Equal Rights Amendment (ERA) was first introduced to Congress. Seeking to create equality between the sexes, the continuous fight to ratify the amendment has been at the heart of feminist politics over the last century, and continues today as debates over reproductive rights and LGBTQ equality once again take center stage. This course will explore the history and legacies of this struggle from gaining the right to vote to the present, examining the multifaceted issues that define “Women’s Rights” in the United States. The course will analyze how the fight over the ERA shaped feminism throughout the twentieth century, as well as the resistance and backlash to women’s ongoing efforts to gain social and political equality. The course will pay attention to the intersections of class, race, gender, and sexuality, and how they impacted women’s achievements and challenges, looking at actors, movements, and organizations.

**Member Price: \$80 | Nonmember Price: \$85**

Landmark Centre Bldg.  
25700 Science Park Dr., Beachwood

✕ Senior Scholars – See page 21 for full program

### IN-PERSON COURSE

#### WWII, AMERICA TO THE RESCUE AND THE CAINE MUTINY

Earl Leiken, Instructor of Lifelong Learning

**Fridays, September 16–November 4**  
**10:30 a.m.–noon ET**

This is a history and literature course which will study the events that led to World War II in the European and Pacific theatres, the U.S. in the period before its entry into the war and its role in saving the civilized world. The history will focus on the magnificent story of the U.S. Navy’s emergence from the devastation of Pearl Harbor to its ultimate victory at sea. After setting the historical context, we’ll then discuss one of the great novels to emerge from the war, *The Caine Mutiny*. The course will include a discussion of the Holocaust which plays a role in the story and an analysis of the Hollywood movie including a comparison with the novel.

Read: *The Caine Mutiny*, Herman Wouk

**Member Price: \$96 | Nonmember Price: \$112**

Landmark Centre Bldg.  
25700 Science Park Dr., Beachwood

*This course is offered with the generous support of the Association for Continuing Education.*

### IN-PERSON COURSE

#### WESTWARD HO! HOW AMERICA SPANNED A CONTINENT

Patrick Moore, Instructor of Lifelong learning

**Tuesdays, September 20–November 8**  
**10:30 a.m.–noon ET**

From a collection of colonies huddling the eastern seaboard, the United States expanded across an entire continent within a few decades. We will explore the events, and people, that made the greatest contribution to what became known as “manifest destiny”. How the vast spaces filled up with new residents, the impact on Native Americans, and the issue of slavery will engage us.

**Member Price: \$96 | Nonmember Price: \$112**  
*Complimentary breakfast included.*

The Normandy, 22701 Lake Road, Rocky River

*This course is offered with the generous support of the Association for Continuing Education.*



# SIEGAL LIFELONG LEARNING AT LAKELAND COMMUNITY COLLEGE

Siegal Lifelong Learning is pleased to work in partnership with Lakeland Community College to offer a selection of learning opportunities in its state-of-the-art Holden University Center (pictured below) located at 7700 Clocktower Dr., Kirtland.

## **WONDERLANDS AND LOOKING-GLASSES: EXPLORING THE MIND OF BOOK ILLUSTRATORS**

Arnold Hirshon, Vice Provost and Lindseth Family University Librarian, CWRU (retired)

**Thursday, August 25 | 10–11:30 a.m. ET**

**Free and Open to the Community**  
Continental Breakfast Provided

*See page 16 for description*

## **WESTWARD HO! HOW AMERICA SPANNED A CONTINENT**

Patrick Moore, Instructor of Lifelong Learning

**Thursdays, September 22–November 10 | 1–2:30 p.m. ET**

**Member Price: \$96 | Nonmember Price: \$112**

*See page 8 for description*

## **LOST WORLDS OF SOUTH AMERICA**

Darin Croft, Professor of Anatomy,  
School of Medicine, CWRU

**Thursday, October 27 | 10–11:30 a.m. ET**

**Free and Open to the Community**  
Continental Breakfast Provided

*See page 20 for description*



THE LAURA & ALVIN SIEGAL  
LIFELONG LEARNING  
PROGRAM

## COURSES AND LECTURES

## IN-PERSON COURSE

## WESTWARD HO! HOW AMERICA SPANNED A CONTINENT

Patrick Moore, Instructor of Lifelong learning

**Thursdays, September 22–November 10**  
**1–2:30 p.m. ET**

From a collection of colonies huddling the eastern seaboard, the United States expanded across an entire continent within a few decades. We will explore the events, and people, that made the greatest contribution to what became known as “manifest destiny”. How the vast spaces filled up with new residents, the impact on Native Americans, and the issue of slavery will engage us.

**Member Price: \$96 | Nonmember Price: \$112**

Lakeland Community College, Holden University Center,  
 7700 Clocktower Dr., Kirtland

*This course is offered with the generous support of the Association for Continuing Education.*

## IN-PERSON LECTURE

## THE HISTORY OF CLEVELAND'S UNDERGROUND RAILROAD

Herbert Addison Burns, Instructor of Lifelong Learning

**Thursday, September 22**  
**6 p.m. ET**

The Underground Railroad was a vast network of allies that provided shelter to enslaved African Americans and helped them seek freedom from the South. This lecture will explore the key role that the network played in Ohio. We will cover how federal and state policies set the tone for the Underground Railroad activities in Cleveland; explore documented evidence of Underground Railroad conductors, fugitive slave rescue missions, and opposing views within the church; and discuss how the Underground Railroad operations were products of Ohio's political culture.

**Member Price: \$0 | Nonmember Price: \$5**

Landmark Centre Bldg.  
 25700 Science Park Dr., Beachwood

## IN-PERSON COURSE

## THE CULTURAL REVOLUTION IN 20TH CENTURY CHINA

Whitney Lloyd, Instructor of Lifelong Learning

**Fridays, September 30–November 18**  
**10:30 a.m.–noon ET**

Two riveting memoirs examine life in 20th century China. *Wild Swans* recounts the harrowing experiences of three generations of women from pre-World War I and the Japanese occupation to the rise of Mao. *Life and Death in Shanghai* is an inspiring account of the author's exceptionally brave and undaunted resistance to indoctrination and physical deprivation during Mao's “Cultural Revolution.” These books are informative and provide significant insight into contemporary China.

Read: *Wild Swans*, Jung Chang; *Life and Death in Shanghai*, Nien Cheng

**Member Price: \$96 | Nonmember Price: \$112**

Landmark Centre Bldg.  
 25700 Science Park Dr., Beachwood

*This course is offered with the generous support of the Association for Continuing Education.*

## REMOTE COURSE

## AMERICAN TRANSCENDENTALISM IN HISTORY AND LITERATURE

Stephen Pierson, Professor of English,  
 State University of New York at Onondaga

**Mondays, October 3–November 7**  
**4–5:30 p.m. ET**

We will explore the history and literature of American Transcendentalism (c. 1830–1860) in a selection of readings by Amos Bronson Alcott, Ralph Waldo Emerson, Margaret Fuller, Henry David Thoreau, and Walt Whitman. The movement's origins in German idealism and subsequent development in New England through the activism of the Transcendental Club shall be considered. The Club's sponsorship of the literary journal *The Dial* (1840–44) and experiment in communal living at Brook Farm, Massachusetts, will also be examined. We will recognize the counterculture of the movement in its promotion of non-traditional sources of authority, such as subjectivity, intuition, and nature. The movement's critiques of sexual inequality and slavery will also be discussed.

**Member Price: \$105 | Nonmember Price: \$130**

## REMOTE COURSE

## THUCYDIDES: THE PELOPONNESIAN WAR, PART 1

John Sarkissian, Professor Emeritus, Classics,  
Youngstown State University

**Mondays, October 10–November 14**  
**11–12:30 p.m. ET**

The historian Thucydides is remarkable for his penetrating presentation of events and personalities in an unemotional, unsentimental manner, without lapsing into simple moralizing. In this discussion-based course we will explore the first half of Thucydides' history of the Peloponnesian War (431–421 BCE, the first ten years of a war which ended in 404). Our focus will be on his narration and analysis of the causes of the war, of the strategies and policies followed by Athens and Sparta, and of the psychological and moral toll the extended war took on the inhabitants of Greece (e.g., the reaction of Athenians to the plague; Sparta's utter destruction of Plataea, an Athenian ally; fierce civil strife on Corcyra (Corfu) ending in horrific violence). "The three most powerful motives – prestige [honor], fear, and self-interest." (Thuc. 1.76)

Read: *Thucydides, The Peloponnesian War*, Martin Hammond

**Member Price: \$105 | Nonmember Price: \$130**

📖 Revisiting the Classics

## REMOTE COURSE

## ITALIAN RENAISSANCE

Paola Basile, Professor of Italian and French Studies,  
Lake Erie College

**Tuesdays, October 11–November 15**  
**4:00–5:30 p.m. ET**

The Italian Renaissance is a period of great cultural change and achievement. It is an explosion of creativity, of beauty, and of excellence. Philosophical ideas of the Italian Renaissance such as the dignity of Man/Woman (a precursor of the principle of basic human rights), and the belief in an ideal, in a free world, still inform our discourse today. This course examines this great cultural achievement through some major artists/authors such as: Leonardo da Vinci, Michelangelo Buonarroti, Raffaello Sanzio, Filippo Brunelleschi, Ludovico Ariosto, as well as some famous women of that period.

**Member Price: \$105 | Nonmember Price: \$130**

## IN-PERSON COURSE

## SPORTS IN AMERICA: FROM PLAY TO PROFIT

John Grabowski, Krieger Mueller Associate Professor of  
Applied History, CWRU

**Wednesdays, October 12–November 16**  
**1:30–3:30 p.m. ET**

Today sports are omnipresent in American life (as well as around the world). They are a multi-billion-dollar industry and the stars of many sports have become social and political influencers. How did this happen? How did "games" become a business? Why do we still remember Babe Ruth, but forget Calvin Coolidge? This course will trace the history of sports in America from their colonial origins to the present. It will examine the evolution of a number of different sports and show how each reflected and influenced American life at a particular time. It will delve deeply into the role that sports have played in race and gender equality. Overall, this course will argue that sports are not only an important aspect of American history, but a valuable tool for understanding the history of the nation. Ready to play ball?

**Member Price: \$80 | Nonmember Price: \$85**

Landmark Centre Bldg.  
25700 Science Park Dr., Beachwood

✂ Senior Scholars – See page 21 for full program

## IN-PERSON LECTURE

## CLARA BARTON AND HENRI DUNANT: ESTABLISHING HUMAN RIGHTS

Jim Lane, Instructor of Lifelong Learning

**Tuesday, October 18**  
**12–1:30 p.m. ET**

Ever since the dawn of existence there has been conflict, violence and warfare. And for just as long, there has been the need for care, nurturing and humanitarianism. Two modern examples who demonstrate these traits in the 19th century are Henri Dunant and Clara Barton with their connection to the laws of war, the Geneva Conventions and the founding of the Red Cross.

**Member Price: \$15 | Nonmember Price: \$20**

*Lunch included in price.*

The Normandy, 22701 Lake Road, Rocky River



## COURSES AND LECTURES

## IN-PERSON LECTURE

## AFRICA IN THE CHANGING WORLD ORDER

Paul Tiyambe Zeleza,  
Associate Provost and North  
Star Distinguished Professor,  
CWRU

**Friday, November 11**  
**noon–1:30 p.m. ET**

The lecture will look at Africa's positioning in the major global transformations underway including demographic shifts, climate change, hegemonic rivalries, rise of populism, and implications of the Fourth Industrial Revolution.

## Free and Open to the Community

Landmark Centre Bldg.  
25700 Science Park Dr., Beachwood



## Jewish Studies

## IN-PERSON COURSE

## SAYING KADDISH: JEWISH WAYS OF MOURNING

Gila Silverman, Director of Jewish Lifelong Learning,  
Siegal Lifelong Learning, CWRU

**Fridays, August 19–September 3**  
**10–11:30 a.m. ET**

Jewish tradition prescribes a fixed set of mourning rituals for the first week, month, and year after a death, and annually beyond that. These traditions balance two commitments: to honor the dead and comfort the mourners. Where do these rituals come from, and what are they designed to do? We will begin by studying the source texts that serve as the foundation for Jewish mourning practices. We will then explore the many different ways that Jewish people navigate and negotiate with these traditions, the influence of secular mourning cultures on Jewish life, and the ways in which these rituals map onto current understandings of the psychological processes of grief.

**Member Price: \$70 | Nonmember Price: \$85**

Landmark Centre Bldg.  
25700 Science Park Dr., Beachwood

## REMOTE LECTURE

## A MULTIRACIAL JEWISH FAMILY IN EARLY AMERICA

Laura A. Leibman, Professor of English and Humanities,  
Reed College

**Thursday, September 1**  
**7–8:30 p.m. ET**

An obsessive genealogist and descendent of one of the most prominent Jewish families since the American Revolution, Blanche Moses firmly believed her maternal ancestors were Sephardic grandees. Yet she found herself at a dead end when it came to her grandmother's maternal line. Professor Leibman will overturn the reclusive heiress's assumptions about her family history to reveal that her grandmother and great-uncle, Sarah and Isaac Brandon, actually began their lives as poor, Christian, and enslaved in Barbados. Leibman traces the siblings' extraordinary journey around the Atlantic world, using artifacts they left behind in Barbados, Suriname, London, Philadelphia, and, finally, New York. While their affluence made them unusual, their story mirrors that of the largely forgotten people of mixed African and Jewish ancestry that constituted as much as ten percent of the Jewish communities in which the siblings lived.

**Member Price: \$0 | Nonmember Price: \$5**

## IN-PERSON LECTURE

## WAS THE COLD WAR A GOLDEN AGE FOR AMERICAN JEWRY?

Brian Amkraut, Vice President of Workforce Credentialing  
and Community Impact, Mercy College

**Thursday, September 15**  
**noon–1:30 p.m. ET**

The Post-WWII era has rightfully been recognized as a period of great success and advancement for American Jews. Arguably, at least on the economic front, that success can be tied directly to the broader growth of the American economy and the country's role on the world stage. But did the level of visible Jewish advancement and integration in America depend on factors beyond the overall post-war boom? In fact, the anti-Soviet tilt of the Cold War era, and its impact in a number of realms, created an environment almost perfectly suited for Jews to find a level of comfort and success in America. The collapse of the Iron Curtain may also have created unintended consequences that have limited the extent to which this was truly a Golden Age for American Jews.

## Free and Open to the Community

Landmark Centre Bldg.  
25700 Science Park Dr., Beachwood

*Jewish Studies programming is supported by the Fund for the Jewish Future of the Jewish Federation of Cleveland, and The Laura and Alvin Siegal College of Judaic Studies Educational Foundation, a supporting foundation of the Jewish Federation of Cleveland.*

## IN-PERSON LECTURE

### THE FOUR HIRAM BINGHAMS: A REMARKABLE AMERICAN FAMILY

Irving Kushner, Professor Emeritus of Medicine, CWRU

**Friday, September 23**  
**noon–1:30 p.m. ET**

Four of them had the same name: Hiram Bingham Sr., Hiram Bingham Jr., Hiram Bingham III, and Hiram Bingham IV. Their lifespans extended over two centuries; the first one was born in 1789 and the last died in 1988. Their careers reflected America's changing values and

challenges over that period. They were active all over the globe; their activities ranged from Pacific islands to Peru to Marseilles. One of them discovered Macchu Pichu, and another saved many Jewish refugees from the Nazis. Two of them were the models for characters in well-known works of fiction, and plaques that commemorate them have been erected in Hawaii and Peru. Join us to learn about this remarkable family.

**Member Price: \$0 | Nonmember Price: \$5**

Landmark Centre Bldg.  
25700 Science Park Dr., Beachwood

## IN-PERSON LECTURES WITH VISITING SCHOLAR SARAH WILLEN

Associate Professor of Anthropology, Director of the Research Program on Global Health and Human Rights, University of Connecticut

### IN-PERSON LECTURE

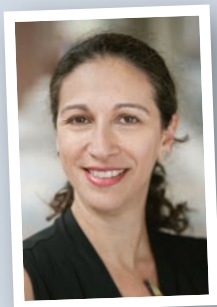
#### FIGHTING FOR DIGNITY: AFRICAN LIVES ON ISRAEL'S MARGINS

**Thursday, October 20**  
**7–8:30 p.m. ET**

How did Israel become home to global migrants from countries as different as Ghana and the Philippines, Nigeria, Colombia, and Ukraine? Anthropologist Sarah Willen will draw on her long-term fieldwork with Nigerian, Ghanaian, and Filipino migrants in Tel Aviv to shed light on the everyday lives of migrant workers in Israel and of the Israelis who felt compelled to advocate on their behalf. Drawing on fieldwork in homes and in churches, medical offices, human rights organizations, and public spaces, the talk will explore how these migrants struggle to craft meaningful, flourishing lives despite the exclusions and vulnerabilities they endure.

**Member Price: \$0 | Nonmember Price: \$5**

Landmark Centre Bldg.  
25700 Science Park Dr., Beachwood



### IN-PERSON LECTURE

#### THE PANDEMIC JOURNALING PROJECT

**Friday, October 21**  
**1:00–2:30 PM ET**

How has the COVID-19 pandemic imprinted itself in our lives? How might a trove of first-person reflections on the changing texture of pandemic life – created with the ordinary tools of 21<sup>st</sup> century digital life – both enrich and challenge our understanding of ourselves and our society? Could online journaling help people cope with the disruption, stress, and anxiety associated with a massive global health crisis? To answer these questions, Sarah Willen and her colleagues co-created The Pandemic Journaling Project (PJP) as a combined journaling platform and research study created in 2020. PJP is a space where ordinary people around the world could take 10 minutes a week to chronicle their pandemic experiences in words, audio, and images. Join us to learn more about the project's key findings, its value as a window into the mental health burdens imposed by COVID-19, and how "archival activism" can shape future understandings of our current time period.

**Member Price: \$0 | Nonmember Price: \$5**

Landmark Centre Bldg.  
25700 Science Park Dr., Beachwood

*These lectures are offered with the generous support of the Friends of Jewish Lifelong Learning.*

*Jewish Studies programming is supported by the Fund for the Jewish Future of the Jewish Federation of Cleveland, and The Laura and Alvin Siegal College of Judaic Studies Educational Foundation, a supporting foundation of the Jewish Federation of Cleveland.*



# Educational Travel Program

## Explore the World with CWRU

### **SUDAN: THE LAND OF NUBIAN PHARAOHS**

December 28, 2022–  
January 11, 2023

Trip Leader: Meghan Strong, Lecturer,  
Classics; Research Associate, Cleveland  
Museum of Natural History



### **A TASTE OF PANAMA: CANAL, RAINFOREST, AND CULTURE**

January 11–18, 2023

Trip Leader: Darin Croft, Professor of Anatomy, CWRU

12



# THE WORLD IS YOUR CLASSROOM

- Visit international destinations with faculty experts sharing their in-depth knowledge and love of learning
- Gain access to behind-the-scenes sites, cultural treasures and educational activities
- Travel with small groups of Case Western Reserve alumni and friends
- Start your journey from any place in the world
- CWRU's Luminary Society members may receive additional discounts on CWRU Educational Travel programs. For further information on Luminary Society travel discounts only, please contact The Office of Strategic Giving at 216.368.4460

## COLORS OF INDIA

January 21–February 3, 2023

Trip Leader: Venkataramanan "Ragu" Balakrishnan, Dean, Case School of Engineering



## THE PRIDE OF SOUTHERN AFRICA

January 14–28, 2023

Trip Leader: David B. Miller, Associate Professor, Jack, Joseph and Morton Mandel School of Applied Social Sciences



## ICELAND: A LONG WEEKEND GETAWAY TO REYKJAVIK

March 10–14,  
2023

For more information or to sign up, visit  
[case.edu/lifelonglearning/travel](https://case.edu/lifelonglearning/travel)  
or contact Sarah Doody at [sxd618@case.edu](mailto:sxd618@case.edu) or 904.432.3141

# COURSES AND LECTURES

## IN-PERSON LECTURES WITH GENETIC GENEALOGIST GIL BARDIGE

### IN-PERSON LECTURES

#### 200,000 MATCHES! HELP!

Sunday, November 13

1:30–2:30 pm ET

Genetic testing can be a powerful tool for genealogical research. DNA results can generate clues that can help people confirm or deny relationships. But DNA results can also be confusing and frustrating. In this presentation, Gil Bardige will share proven methodologies to help you prioritize your top 50 matches so that you can have the highest probability of finding a common relative on a family tree, and provide you with actionable processes that you can really use in your genealogy research.

#### PRICE INCLUDES BOTH LECTURES

Siegal and JGSC Member Price: \$0 | Nonmember Price: \$10

Landmark Centre Bldg., 25700 Science Park Dr., Beachwood

*These lectures are offered in partnership with the Jewish Genealogical Society of Cleveland.*

#### ENDOGRAMY: ONLINE DNA TOOLS AND YOUR BRICK WALLS

Sunday, November 13

3:00–4:00 pm p.m. ET

Do you have endogamy in your family tree? You are probably wondering what the best online tools are to use in your family history research. Gil Bardige will discuss strategies and challenges when using popular 3rd party tools in such cases. He will demonstrate how to use – or not use – different online tools, including Ethnicity, Shared Matches, Clusters, WATO (What are the Odds) and SCMP (shared centimorgan project). After this lecture, you will find yourself more productive and effective in applying your DNA matches to your genealogy.

### IN-PERSON COURSE

#### THE ORCHARD: TWO NOVELS BASED ON THE SAME TALMUDIC LEGEND

Sylvia Abrams, Professor Emeritus and former Dean,  
Siegal College

Mondays, October 24–November 7

10–11:30 am ET

Pardes (Hebrew for “orchard”) is a Jewish legend about four rabbis of the Mishnaic period who visited the pardes (the “orchard” of esoteric Torah knowledge). Only one survived the experience unharmed. The novelists David Hopen and Yochi Brandes have both written novels titled *The Orchard*, inspired by this legend. Hopen’s debut novel is narrated by an Orthodox Jewish high school student who finds his

world transformed when his family moves to South Florida. Brandes’ historical novel, originally written in Hebrew, is narrated by Rachel, Rabbi Akiva’s wife. In this class, we will compare and contrast these two books, exploring how both authors craft narratives that grapple with testing the boundaries of religious belief.

Read: Yochi Brandes, *The Orchard*, translated from the Hebrew by Daniel Libenson. Available in Hebrew as *Hapardes shel Akiva*.

David Hopen, *The Orchard*.

**Member Price: \$54 | Nonmember Price: \$65**

Landmark Centre Bldg.  
25700 Science Park Dr., Beachwood

*Jewish Studies programming is supported by the Fund for the Jewish Future of the Jewish Federation of Cleveland, and The Laura and Alvin Siegal College of Judaic Studies Educational Foundation, a supporting foundation of the Jewish Federation of Cleveland.*

## REMOTE COURSE

## CONTEMPORARY ANTISEMITISM AND JEWISH IDENTITY

Samantha Vinokor-Meinrath, Senior Director of Knowledge, Ideas and Learning, Jewish Education Project

**Tuesdays, October 25–November 29**

**7–8:30 p.m. ET**

With the rise in antisemitism nationwide, exploring the world's oldest hatred is more relevant and important than ever before. This course will explore the past, present, and future of antisemitism. We'll delve into the history of antisemitism tropes, their modern manifestations, and will question how social media, Israel, and more impact how antisemitism shapes Jewish life today. Throughout, we will explore the Jewish future, including the choices that current and future generations are making in the face of rising antisemitism, and how Jewish identities are impacted by internal and external pressures.

**Member Price: \$105 | Nonmember Price: \$130**

## IN-PERSON COURSE

## THE BIBLE HISTORICALLY, LITERARILY AND ARCHAEOLOGICALLY CONSIDERED

Peter Haas, Abba Hillel Silver Professor Emeritus, CWRU

**Tuesdays, November 1–December 6**

**10–11:30 a.m. ET**

The Bible is not a single book but rather a collection of Ancient Near East and Hellenistic writings that have become the basis of all Western Religions. In this course, we look at how the various books of the Bible came to be written, preserved, translated and interpreted down to our time.

**Member Price: \$105 | Nonmember Price: \$130**

Landmark Centre Bldg.  
25700 Science Park Dr., Beachwood

## IN-PERSON COURSE

## THE WORLD-CHANGING IDEAS OF RABBI LORD JONATHAN SACKS

Jeremy Bruce, Rabbi, Executive Director, Rabbi Sacks Foundation (North America)

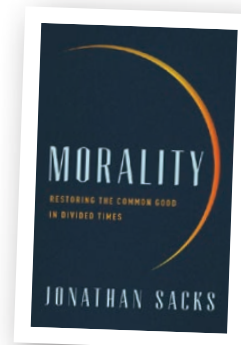
**Mondays, November 28–December 19**

**noon–1:30 p.m. ET**

Rabbi Lord Jonathan Sacks was one of the most influential Jewish scholars, philosophers, and moral leaders of our time. He served for 22 years as the Chief Rabbi of the United Hebrew Congregations of the Commonwealth (the UK Jewish community) and wrote over 35 books including *Not in God's Name: Confronting Religious Violence*; *The Great Partnership: God, Science and the Search for Meaning*; and *The Dignity of Difference: How to Avoid the Clash of Civilizations*. His last book *Morality: Restoring the Common Good in Divided Times*, was published just before his death in 2020. Throughout a long career, Rabbi Sacks inspired people across the globe to see the contributions that Judaism and religion make to 21<sup>st</sup> century society. In this class, we will explore Rabbi Sacks' teachings, and the extraordinary impact that he had on the world.

**Member Price: \$70 | Nonmember Price: \$85**

Landmark Centre Bldg.  
25700 Science Park Dr.,  
Beachwood



## REMOTE LECTURE

## HOW TO GET A HEAD IN ANCIENT ISRAEL: EXPLORING THE BOOK OF JUDITH

Caryn Tamber-Rosenau, Instructional Assistant Professor of Jewish Studies, University of Houston

**Wednesday, December 14**

**7–8:30 p.m. ET**

The ancient Jewish book of Judith tells the story of a beautiful, pious widow who seduces an enemy general to his death. This talk will explore questions such as: What does Judith have to do with Hanukkah? Why didn't her book make it into the Jewish biblical canon? And what is the role of Judith's womanhood in her story?

**Member Price: \$0 | Nonmember Price: \$5**

*This lecture is offered with the generous support of the Friends of Jewish Lifelong Learning.*

*Jewish Studies programming is supported by the Fund for the Jewish Future of the Jewish Federation of Cleveland, and The Laura and Alvin Siegal College of Judaic Studies Educational Foundation, a supporting foundation of the Jewish Federation of Cleveland.*



# COURSES AND LECTURES

## Literature and Writing

### IN-PERSON LECTURE

#### WONDERLANDS AND LOOKING-GLASSES: EXPLORING THE MIND OF BOOK ILLUSTRATORS

Arnold Hirshon, Vice Provost and Lindseth Family University Librarian, CWRU (retired)

**Thursday, August 25**  
**10–11:30 a.m. ET**

Illustration is the art of translating text into visual images. When illustrating a book, the illustrator faces numerous choices, and when illustrating a classic text there is an additional challenge: how to bring something new of interest to the reader. Lewis Carroll's two Alice books – *Alice's Adventures in Wonderland* and *Through the Looking-Glass* – are the most illustrated works of literature in the world, with over 1,800 illustrators internationally having had a hand in illustrating one or both books. Thus, Alice provides a perfect opportunity to explore what goes on in the mind of illustrators as they consider the potential audience (such as children versus adults), the possible artistic choices (such as style, media, and techniques), and the textual influences (such as which characters or scenes to illustrate, and how to reflect changes in culture and fashion). This fast-moving trip down the artistic rabbit hole will be a delight to the eye, and you will see all illustrated books in a fascinating new light.

Read: *Alice's Adventures in Wonderland*, Lewis Carroll; *Through the Looking-Glass*, Lewis Carroll (recommended, not essential)

#### Free and Open to the Community

Lakeland Community College, Holden University Center,  
7700 Clocktower Dr., Kirtland

### IN-PERSON COURSE

#### HOMER'S ILIAD

Janice Vitullo, Instructor of Lifelong Learning

**Thursdays, September 8–October 27**  
**10–11:30 a.m. ET**

Join us for a close, guided reading of Homer's great epic poem the *Iliad*. Participants will have the opportunity to engage in analysis and discussion of various aspects of the poem, including style, historical context, and the poem's significance within the literary canon.

Read: *Homer: The Iliad*, Robert Fagles

**Member Price: \$140 | Nonmember Price: \$172**

Landmark Centre Bldg.  
25700 Science Park Dr., Beachwood

📖 Revisiting the Classics

### IN-PERSON COURSE

#### WRITING CREATIVE NONFICTION

Linda Tuthill, Instructor of Lifelong Learning

**Tuesdays, September 13–November 8**  
(No classes: September 27, October 4)  
**1–3 p.m. ET**

In this creative nonfiction workshop participants share slices of their lives with each other in a supportive environment. Topics correlate with readings from a nonfiction paperback available at the first session.

**Member Price: \$112 | Nonmember Price: \$123**

Landmark Centre Bldg.  
25700 Science Park Dr., Beachwood

### IN-PERSON COURSE

#### WRITING POETRY

Linda Tuthill, Instructor of Lifelong Learning

**Thursdays, September 15–November 10**  
(No classes: September 29, October 6)  
**1–3 p.m. ET**

Mary E. Cronin concludes her poem "Ars Poetica, Bronx" with the lines "It was ordinary magic/that made me a poet." Poets in this group bring to the table the magic that often hides in the ordinary, enriching each other through sharing everyday epiphanies.

**Member Price: \$112 | Nonmember Price: \$123**

Landmark Centre Bldg.  
25700 Science Park Dr., Beachwood

### REMOTE COURSE

#### TOLKIEN'S THE LORD OF THE RINGS TRILOGY

Paula Kalamaras, Instructor of Lifelong Learning

**Wednesdays, September 21–November 9**  
**10:30 a.m.–noon ET**

"One Ring to rule them all, One Ring to find them, One Ring to bring them all and in the darkness bind them." Why has Tolkien's *Lord of the Rings* remained a classic, a seminal work from which most fantasy writers derive inspiration? Why does it resonate? This course examines Tolkien's world, his characters, mysteries, humor and more as we vanish into Middle Earth and chase the Fellowship as they strive to return the One Ring to Mount Doom. Readings will include creation myths from *The Silmarillion* as well as Professor Tolkien's views "On Fairy Stories."

Read: *The Lord of the Rings Trilogy: The Fellowship of the Ring, The Two Towers, and The Return of the King*, J.R.R. Tolkien

**Member Price: \$96 | Nonmember Price: \$112**

*This course is offered with the generous support of the Association for Continuing Education.*

## IN-PERSON COURSE

**CHARLES CHESNUTT, LANGSTON HUGHES, AND COLOR LINE BLUES: THE LIFE, TIMES, AND WORKS OF TWO OHIO WRITERS**

Regennia N. Williams, Distinguished Scholar of African American History and Culture, Cleveland History Center of the Western Reserve Historical Society

**Tuesdays, October 11–November 15**  
**1:30–3:30 p.m. ET**

Charles Waddell Chesnutt (1858-1932) and Langston Hughes (1901-1967) are two of the most celebrated African American writers in the history of American literature and both called Cleveland their home. The 2021-2022 Cleveland Arts Prize "Past Masters" series, commemorating its 60<sup>th</sup> anniversary, announced that both were among the 60 honorees and the title for this summer's 2022 Front International Cleveland Triennial for Contemporary Art – "Oh, Gods of Dust and Rainbows" – also takes its inspiration from the words of Langston Hughes. This lecture series will focus on materials that were written by and about Hughes and the lesser known Chesnutt, and the vast influence of their literary art in both the racialized America of their lifetimes and in the 21<sup>st</sup> century.

**Member Price: \$80 | Nonmember Price: \$85**

Landmark Centre Bldg.  
 25700 Science Park Dr., Beachwood

✂ Senior Scholars – See page 21 for full program

## REMOTE COURSE

**KATE CHOPIN'S THE AWAKENING**

Monica Miller, Assistant Professor,  
 Middle Georgia State University

**Wednesdays, October 12–November 2**  
**10–11:30 a.m. ET**

In this class, we will read and discuss Kate Chopin's classic novel. First published in 1899, the novel found new life in the mid-twentieth century, when it was rediscovered and celebrated as a feminist masterpiece. A beautifully-written story of a woman's claiming of her life, the novel will be supplemented with background information on Chopin's Louisiana life as well as the novel's afterlives and celebration as a landmark in regional writing and women's writing.

Read: *The Awakening*, Kate Chopin

**Member Price: \$70 | Nonmember Price: \$85**

📖 Revisiting the Classics

## REMOTE LECTURE

**THE TRAGEDY OF EDGAR ALLAN POE**

Susan Cannavino, Instructor of Lifelong Learning

**Friday, October 21**  
**noon–1:30 p.m. ET**

No one should suffer as much loss and death as this 19th century American writer. In this lecture, you will learn about the personal life and relationships of Edgar Allan Poe from his childhood through the end of his life. As the tragedy of his life unfolds, you will understand why death and the loss of a beautiful woman permeate his writing.

**Member Price: \$5 | Nonmember Price: \$10**

## IN-PERSON COURSE

**CONTEMPORARY PERSPECTIVES ON LITERARY HEROES**

Cindy Sabik, Instructor of Lifelong Learning

**Thursdays, November 3–December 15**  
**10–11:30 a.m. ET**

In this course, we will consider what it might mean to bring a contemporary lens to the work of 19th and 20th century American authors William Faulkner, Henry David Thoreau, Emily Dickinson, Sylvia Plath, Mark Twain and Flannery O'Connor. Brilliant and timeless though their work may be, they were also fully human and products of their time and place. How might these texts reveal themselves anew when we bring our contemporary – and often polarized – sensibilities to bear on them?

**Member Price: \$105 | Nonmember Price: \$130**

Landmark Centre Bldg.  
 25700 Science Park Dr., Beachwood

📖 Revisiting the Classics

## REMOTE COURSE

**THE LYRIC POETRY OF CATULLUS**

Janice Vitullo, Instructor of Lifelong Learning

**Tuesdays, November 8–December 13**  
**10–11:30 a.m. ET**

In this class, we will read in translation and discuss the lyric poetry of the Roman poet Catullus. The chief of the Poetae Novi (New Poets), Catullus' ground-breaking poems on such themes as love and betrayal, friendship, and poking fun at annoying people influenced Horace, Vergil, Propertius, and Ovid, among others. He was witty, serious, funny, learned and sad, and left a legacy that caused his contemporaries and those who followed him to consider him one of the greatest of all Roman poets.

**Member Price: \$105 | Nonmember Price: \$130**

📖 Revisiting the Classics

# COURSES AND LECTURES

## Philosophy and Religion

### IN-PERSON COURSE

#### THE ENLIGHTENMENT: ITS ROOTS AND LEGACY

Charlene Milet, Instructor of Lifelong Learning

**Mondays, September 19–November 14**

(No class: October 10)

**10–11:30 a.m. ET**

In the 17<sup>th</sup> and 18<sup>th</sup> centuries, the goal of many Western philosophers, writers, political scholars and scientists was to establish 'reason' as man's defining feature. Following

Ancient Greece, Enlightenment thinkers believed that only 'rational' investigation could reveal the truths about man, nature and the cosmos. The current global environment is the direct beneficiary of the worldview imagined and made real by the Enlightenment. This course will explore the legacy of Enlightenment ideas; the rising authority of science, moral relativism and the rise of authoritarianism.

**Member Price: \$96 | Nonmember Price: \$112**

Landmark Centre Bldg.  
25700 Science Park Dr., Beachwood

*This course is offered with the generous support of the Association for Continuing Education.*

## BECOME A MEMBER OF SIEGAL LIFELONG LEARNING

Siegal Lifelong Learning offers an optional membership model for participants that is renewable on an annual basis. Members receive discounts on courses, programs, and invitations for some priority events.

### ANNUAL MEMBERSHIP FEES:

Individual Membership: \$45

Individual Membership for CWRU Alumni  
& Retirees, and ACE Members: \$35

Member Plus One: \$80

**For more information, visit:**

**[case.edu/lifelonglearning/about/membership](http://case.edu/lifelonglearning/about/membership)**  
or call **216.368.2901**



THE LAURA & ALVIN SIEGAL  
LIFELONG LEARNING  
PROGRAM



## Politics and Contemporary Issues

### IN-PERSON COURSE

#### IMMIGRATION AND U.S. CITIZENSHIP

Barbara Greenberg, Instructor of Lifelong Learning

**Mondays, September 12–November 7**

(No class: September 26)

**1:30–3 p.m. ET**

Most people take their citizenship for granted. But for our ancestors and so many people coming to America, becoming a citizen is the most important moment of their life. Article I, Section 8, paragraph 4, of the U.S. Constitution states that "Congress shall have the power ... To establish a uniform Rule of Naturalization ..." This course will examine the 10-step naturalization process and discuss the history and consequences of this process.

**Member Price: \$96 | Nonmember Price: \$112**

South Franklin Circle, 16600 Warren Court, Chagrin Falls

*This course is generously supported by the Association for Continuing Education.*

### REMOTE COURSE

#### IMMIGRATION AND U.S. CITIZENSHIP

Barbara Greenberg, Instructor of Lifelong Learning

**Tuesdays, September 13–November 8**

(No class: September 27)

**10–11:30 a.m. ET**

Most people take their citizenship for granted. But for our ancestors and so many people coming to America, becoming a citizen is the most important moment of their life. Article I, Section 8, paragraph 4, of the U.S. Constitution states that "Congress shall have the power ... To establish a uniform Rule of Naturalization ..." This course will examine the 10-step naturalization process and discuss the history and consequences of this process.

**Member Price: \$96 | Nonmember Price: \$112**

*This course is offered with the generous support of the Association for Continuing Education.*



### IN-PERSON COURSE

#### THE AMERICAN ECONOMY AND ITS CHALLENGES

Earl Leiken, Instructor of Lifelong Learning

**Fridays, November 11–December 9**

(No class: November 25)

**10:00 a.m.– noon ET**

This course will discuss the challenges currently facing the American economy including inflation, labor shortages, supply chain disruptions, the impact of the Russia-Ukraine war, global economic competition with China, income, wealth and tax inequities, an exploding national debt, control of economic sectors by dominant players and the tension between climate change and the need to supply current energy needs. It will include an analysis of the strengths and weaknesses of efforts by the Biden administration and the Federal Reserve to overcome these challenges, the political impact of the economic developments and a discussion of the future of the American economy.

**Member Price: \$75 | Nonmember Price: \$90**

Landmark Centre Bldg.

25700 Science Park Dr., Beachwood

*This course is offered with the generous support of the Association for Continuing Education.*

# COURSES AND LECTURES

## Science and Technology

### IN-PERSON LECTURE

#### ACE LECTURE DAY: TO UNIVERSES BEYOND WITH THE JAMES WEBB SPACE TELESCOPE

**Monday, October 10**

**9:30 a.m.–2 p.m.**

**Member Price: \$45 | Nonmember Price: \$50**

Judson Manor, 1890 E. 107th St.  
Cleveland



### IN-PERSON LECTURE

#### LOST WORLDS OF SOUTH AMERICA

Darin Croft, Professor of Anatomy,  
School of Medicine, CWRU

**Thursday, October 27**

**10–11:30 a.m. ET**

A mere 12,000 years ago, a variety of weird and wonderful mammals roamed South America. Millions of years earlier, this continent's mammals were completely unlike those anywhere else in the world. Join Dr. Croft to learn what he and other researches have uncovered about these marvelous mammals through new discoveries and new ways of studying ancient remains.

#### Free and Open to the Community

Lakeland Community College, Holden University Center,  
7700 Clocktower Dr., Kirtland

### IN-PERSON LECTURE SERIES

This unique program offers community members an opportunity to engage with leading scholars in the rapidly developing areas of origins science. Each evening begins with a presentation by a world-class researcher followed by an open discussion.

**Tuesdays**

**October 11–November 22**

Lecture topics will include:

- Milk, Mothers and the Microbiome
- Paleoanthropology: New Finds, New Sites
- New Ideas In and From Thermodynamics

## ORIGINS SCIENCE SCHOLARS

The Origins Science Scholars Program is presented by Siegal Lifelong Learning and the Institute for the Science of Origins (ISO) and is held in partnership with several Northeast Ohio research and educational institutions.

Details and registration coming soon at [case.edu/lifelonglearning/origins](https://case.edu/lifelonglearning/origins)

## SENIOR SCHOLARS

Senior Scholars is an 11-week program that meets three afternoons per week from 1:30–3:30 p.m. and features academic lectures by university faculty and local experts on a variety of topics. While the format is lecture style, the afternoons are informal and interactive with opportunity to ask questions and discuss the topics of the day. See full listings and details throughout the catalog.

### ✕ Senior Scholars

*Senior Scholars is generously supported by the Jane and Jon Outcalt Foundation*

**Location: Landmark Centre – Beachwood**

**Senior Scholars course cost for the full semester:**

**Member of Lifelong Learning cost: \$271**

**Nonmember: \$302**

**Senior Scholars course cost for individual courses:**

**Member of Lifelong Learning cost: \$80**

**Nonmember: \$85**

### Tuesdays

#### ▪ TO BE ANNOUNCED

Tuesdays, September 6–October 4

1:30–3:30 p.m. ET

#### ▪ CHARLES CHESNUTT, LANGSTON HUGHES, AND COLOR LINE BLUES: THE LIFE, TIMES, AND WORKS OF TWO OHIO WRITERS

Regennia N. Williams, Distinguished Scholar of African American History and Culture, Cleveland History Center of the Western Reserve Historical Society

Tuesdays, October 11–November 15

1:30–3:30 p.m. ET

[See full listing on page 17]

### Wednesdays

#### ▪ A CENTURY OF KING TUT

Meghan Strong, Adjunct Assistant Professor, Classics, CWRU

Wednesdays, September 7–October 5

1:30–3:30 p.m. ET

[See full listing on page 6]

#### ▪ SPORTS IN AMERICA: FROM PLAY TO PROFIT

John Grabowski, Krieger Mueller Associate Professor of Applied History, CWRU

Wednesdays, October 12–November 16

1:30–3:30 p.m. ET

[See full listing on page 9]

### Thursdays

#### ▪ WOMEN'S RIGHTS IN AMERICA 1923–2022: THE HISTORY OF THE ERA

Einav Rabinovitch-Fox, Visiting Instructor, History, CWRU

Thursdays, September 8–October 6

1:30–3:30 p.m. ET

[See full listing on page 6]

#### ▪ JAZZ – FROM ITS ORIGINS TO THE PAST

Paul Ferguson, Senior Instructor, Music, CWRU

Thursdays, October 13–November 17

1:30–3:30 p.m. ET

[See full listing on page 4]







THE LAURA & ALVIN SIEGAL  
LIFELONG LEARNING  
PROGRAM

## COURSE AUDIT PROGRAM FOR SENIOR CITIZENS



# It's Never Too Late to Go Back to School

This program offers adults ages 65 and older reduced tuition rates for a broad range of courses at CWRU. Registration is now open for Fall semester. Classes begin August 29.



When Robin Wick retired from her career in pharmaceuticals, she was looking for something to enrich her life. Beginning with courses in Art History and currently exploring other subject areas, Robin has found that fulfillment through course auditing. Robin shared, "all of the professors at CWRU are extraordinary. They each have different styles and demeanors, and I've enjoyed all of them."

**FOR MORE INFORMATION, CONTACT: Felicia Westbrooks**

**SeniorAuditProgram@case.edu | 216.368.3195 | [case.edu/seniorauditprogram](https://case.edu/seniorauditprogram)**

# CONTINUING PROFESSIONAL STUDIES

The Continuing Professional Studies division of Case Western Reserve University-Siegal Lifelong Learning offers part-time certificate programs and boot camps that help participants gain new skills and enhance career opportunities.



## Digital Skills Boot Camps

24 weeks online

Cybersecurity Boot Camp

Coding Boot Camp

Data Analytics Boot Camp

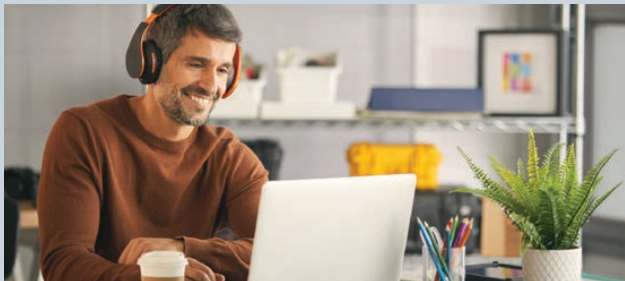
*All programs begin on  
October 31*



## Digital Marketing Boot Camp

Fast-track your digital marketing career with in-depth professional training led by industry experts and thought leaders covering nearly every aspect of the current digital marketing landscape.

*Check website for program dates*



## Foundations of Digital Music Production

Build your digital music production skills using Ableton Live.

*4-week fall session  
begins September 5*



## Social Impact

Online training and in-country field work

Accelerate your career for good

A variety of programs available including clean energy, marine and wildlife conservation, corporate sustainability, global public health and human rights



THE LAURA & ALVIN SIEGAL  
LIFELONG LEARNING  
PROGRAM

For more information, visit: [case.edu/cps](https://case.edu/cps) or call 216.368.2157

# MEMBERSHIP & REGISTRATION

## Membership

Siegal Lifelong Learning offers an optional membership model for participants. Annual membership entitles members to exclusive discounts, priority registration for some popular events, invitations to members-only events and more. A complete list of membership benefits can be found at [case.edu/lifelonglearning/membership](http://case.edu/lifelonglearning/membership). The cost for membership is \$45 for the individual or \$80 for member plus one.

Nonmembers may still register for most events and classes, but do not enjoy priority registration or member discounts or benefits. Additional member benefits may be available to participants in the Siegal Lifelong Learning Annual Fund.

### GIFT CERTIFICATES

Give the gift of learning by purchasing a gift certificate for membership and/or courses and lectures. Contact our office at 216.368.2091 for information.

## Registration Policies

### DISCOUNTS

Case Western Reserve University alumni and retirees (faculty and staff) and Association of Continuing Education members are entitled to \$10 off the current membership rate.

### FINANCIAL AID

Financial assistance is available. Please contact Siegal Lifelong Learning for information.

### WITHDRAWALS AND SUBSTITUTIONS

- A 100% refund will be issued to the registered student if a completed withdrawal request is received prior to five business days before the start date of the class or lecture.
- A 50% refund will be issued for withdrawal requests received on or after five, but prior to three business days before the start date of the class or lecture.
- There is no refund for withdrawal requests received on or after three days prior to the start date of the class or lecture; no exceptions will be made.
- If unable to attend, you may substitute another person at no additional cost; please notify of change or substitution at least one day prior to the start date of the class or lecture.
- Withdrawal requests must come directly from the student or his/her designee; the official receipt date is the day and time the request is received in the Siegal Lifelong Learning office.

### CANCELLATIONS

Although Siegal Lifelong Learning is committed to delivering all classes, workshops or lectures that are scheduled, there are times when a class, workshop or lecture is canceled due to minimum enrollment requirements. If Siegal Lifelong Learning cancels a class, a 100% refund is automatically processed for participants who do not choose to transfer to another available class. Lifelong Learning staff will make every attempt to notify participants of cancellations via registration information. Participants may also call 216.368.2090 for cancellations.

### REFUNDS

Refunds can be processed using the credit card used at the time of registration and payment. All other forms of payment will be refunded by check from Case Western Reserve University to the student. Please allow three to four weeks for the refund check to be processed and mailed to the address given at the time of registration. If there has been an address change, please provide the corrected address with your withdrawal request.



# REGISTRATION FORM

**MAIL:** Send completed form to address below.

**ONLINE:** [case.edu/lifelonglearning](http://case.edu/lifelonglearning)

**FAX:** Fax form to 216.368.1861

**PHONE:** 216.368.2090 or 216.368.2091

Name \_\_\_\_\_ Birth Year \_\_\_\_\_

Address \_\_\_\_\_

City \_\_\_\_\_ State \_\_\_\_\_ Zip \_\_\_\_\_

Telephone \_\_\_\_\_ Email \_\_\_\_\_

LIST NAME OF COURSE, LECTURE, EVENT OR WORKSHOP BELOW.

Program Name \_\_\_\_\_ FEE \$ \_\_\_\_\_

Program Name \_\_\_\_\_ FEE \$ \_\_\_\_\_

Program Name \_\_\_\_\_ FEE \$ \_\_\_\_\_

Program Name \_\_\_\_\_ FEE \$ \_\_\_\_\_

Program Name \_\_\_\_\_ FEE \$ \_\_\_\_\_

Program Name \_\_\_\_\_ FEE \$ \_\_\_\_\_

ANNUAL MEMBERSHIP FEE INDIVIDUAL MEMBER \$45 \_\_\_\_\_

CWRU ALUMNI, RETIREES, ACE MEMBERS \$35 \_\_\_\_\_

MEMBER PLUS ONE \$80 \_\_\_\_\_

Name of Plus One (if applicable) \_\_\_\_\_

MORE INFORMATION ABOUT MEMBER BENEFITS:

[case.edu/lifelonglearning/membership/](http://case.edu/lifelonglearning/membership/)

TOTAL \_\_\_\_\_

Please share your suggestions for future courses or programs.

If paying by check, please make payable to  
Case Western Reserve University and mail to:

**The Laura and Alvin Siegal Lifelong Learning Program**  
Case Western Reserve University  
10900 Euclid Avenue, Thwing Center, Room 153  
Cleveland, OH 44106-7116

CREDIT CARD

Mastercard

Visa

Discover

TOTAL \$ \_\_\_\_\_

Name on Card

Exp. (MM/YY)

Account No.

CVV Code



THE LAURA & ALVIN SIEGAL  
LIFELONG LEARNING  
PROGRAM

*Siegal Lifelong Learning Program*  
Case Western Reserve University  
10900 Euclid Avenue  
Cleveland, Ohio 44106-7116

## IN-PERSON PROGRAMMING

As Siegal Lifelong Learning continues to navigate safety precautions related to Covid-19, we are offering a mixture of online and in-person courses and lectures to accommodate the needs and requests of all of our participants. We are beginning to reopen programs in satellite locations including:

- Case Western Reserve University:  
on campus and in the Landmark  
Centre Building, Beachwood
- South Franklin Circle, Chagrin Falls
- Lakeland Community College Holden Center,  
Kirtland
- Cleveland Museum of Art
- Cleveland Museum of Natural History
- Judson Manor, Cleveland
- The Normandy, Rocky River

