

April, May, June 2024

COURSES & LECTURES

IN-PERSON AND REMOTE LEARNING OPPORTUNITIES



**CASE WESTERN RESERVE
UNIVERSITY**
The Laura & Alvin Siegal
Lifelong Learning Program

REGISTRATION

REGISTER ONLINE

Register online through our secure site at
case.edu/lifelonglearning

REGISTER BY MAIL

Return the registration form in the back of this catalog to:
The Laura and Alvin Siegal Lifelong Learning Program
Case Western Reserve University
10900 Euclid Ave.
Cleveland, OH 44106-7116

REGISTER BY PHONE

216.368.2090 (Campus office) or
216.368.2091 (Beachwood office)

POLICIES

Registration policies including course withdrawals, cancellations and refunds can be found on our website. Visit **case.edu/lifelonglearning/about/registration-info-policies**

MEMBERSHIP

An optional membership model offers reduced fees for courses, lectures and most ticketed events among other perks. Details and pricing are available on our website. Visit **case.edu/lifelonglearning/about/membership**

HOW TO REACH US

Case Western Reserve
University Campus
p 216.368.2090
f 216.368.1861

Siegal Lifelong Learning
Beachwood Office
p 216.368.2091
f 216.368.1003

Email:
lifelonglearning@case.edu

Website:
case.edu/lifelonglearning

Mailing Address:
The Laura and Alvin Siegal
Lifelong Learning Program
Case Western Reserve University
10900 Euclid Ave.
Cleveland, OH 44106-7116

Landmark Centre Building
25700 Science Park Drive
Suite 100
Beachwood, OH 44122

Visitors and Deliveries:
Thwing Center, Room 153
11111 Euclid Ave.
Cleveland, OH 44106-7116



David Fleshler

Siegal Lifelong Learning welcomed David Fleshler in December as its new vice provost and interim executive director. After serving as Case Western Reserve University's senior administrator focused on global engagement since 2009, Siegal will benefit from David's leadership and guidance in this role. Since its inception in 2012, Siegal Lifelong Learning has expanded to include international travel programs and continuing professional studies opportunities in addition to the personal enrichment programming detailed in this catalog.

With David's experience and expertise, Siegal looks forward to continued growth in programming open to the community.

As always, the entire staff of Siegal Lifelong Learning is pleased to offer a wide variety of courses and lectures to meet your intellectual curiosity. If you have any questions or need assistance with registration, please feel free to reach out to our offices at 216.368.2090 or 216.368.2091 or lifelonglearning@case.edu

CONTENTS

Art, Music and Theater	3
Hebrew	5
History and Culture	6
Horticulture, Nature and Health	7
Jewish Studies	8
Literature and Writing	17
Philosophy and Religion	19
Politics	20
Travel	12
Morning Coffee & Conversation	21
Origins Science Scholars	22

David Fleshler
Vice Provost and
Interim Executive
Director

Averil Braden
Department Assistant

Hallie Bravo
Program Manager,
Jewish Studies

Sarah Doody
Travel Consultant

Jamaal Hill
Project Manager,
Continuing Professional
Studies

Karen Laurence
Director of Educational
Programs & Faculty
and Alumni
Engagement

Lorraine Nelson
Program Administrator

Jacqueline Pereira
Associate Director

**Andrea Kushnick
Rubin**
Director of Program
Outreach and
Community
Engagement

Felicia Westbrooks
Program Administrator

MAKE SIEGAL LIFELONG LEARNING A PART OF YOUR PERSONAL LEGACY



Enid and Irving Kushner

A Lasting Legacy of Learning

Create a lasting legacy by naming an annual lecture or lecture series at Case Western Reserve University's Siegal Lifelong Learning. Associating your name with Siegal's programs sends a message to the community about your belief in fostering high quality lifelong learning opportunities.

Enid and Irving Kushner did just that. Creating the Enid and Irving Kushner Endowment for Adult Jewish Education of the Jewish Federation of Cleveland, enables Siegal to bring distinguished individuals with broad experience and academic expertise each year.

We established a lectureship with Siegal Lifelong Learning because we both love to learn and feel strongly about supporting adult education. Siegal Lifelong Learning has exceeded our expectations; it has expanded its scope and gotten better and better. It has become a major resource for Cleveland, and, thanks to Zoom, far beyond Northeast Ohio. We intend to continue funding it as long as we can.

—Enid and Irving Kushner

If you'd like to make an impact in our community, please reach out to us to learn more.

For more information, please contact:

Andrea Kushnick Rubin | **216-368-3460**
Director of Program Outreach
and Community Engagement
axk1128@case.edu



**CASE WESTERN RESERVE
UNIVERSITY**
The Laura & Alvin Siegal
Lifelong Learning Program

Art, Music and Theater

IN-PERSON COURSE

CMA UP CLOSE: TRAVELING THROUGH LANDSCAPES

Professional staff

**Tuesdays, March 19–April 23
1–2 p.m. ET**

Artists have depicted landscapes in art for centuries, and the genre continues to captivate audiences. The landscapes of certain regions (geographic, political, and social) have been influential to artists in terms of subject matter, materials, and style, as well. In this course, participants can explore artists' depictions of landscapes, in addition to the diversity of peoples, traditions, and artistic expressions from across many lands. Session topics will include: the importance of the Seven Jeweled Mountain in North Korea and its role in the tradition of Korean landscape painting; the complex artistic relationships between northern and eastern African Christian kingdoms and the Byzantine Empire seen through secular and sacred art from across geographies and faiths; and how Monet captured the momentary effects of light and atmosphere on subjects, at various times of day and under different weather conditions. This on-site course involves walking through the museum galleries, slide presentations in the lecture hall, and viewing objects in a classroom space. Assisted listening devices are available for use in the museum.

Price: \$120**Members receive 15% discount.**

Cleveland Museum of Art

IN-PERSON COURSE

CMA UP CLOSE: TRAVELING THROUGH LANDSCAPES

Professional staff

**Thursdays, March 21–April 25
1–2 p.m. ET**

Artists have depicted landscapes in art for centuries, and the genre continues to captivate audiences. The landscapes of certain regions (geographic, political, and social) have been influential to artists in terms of subject matter, materials, and style, as well. In this course, participants can explore artists' depictions of landscapes, in addition to the diversity of peoples, traditions, and artistic expressions from across many lands. Session topics will include: the importance of the Seven Jeweled Mountain in North Korea and its role in the tradition of Korean landscape painting; the complex artistic relationships between northern and eastern African Christian kingdoms and the Byzantine Empire seen through secular and sacred art from across geographies and faiths; and how Monet captured the momentary effects of light and atmosphere on subjects, at various times of day and under different weather conditions. This on-site course involves walking through the museum galleries, slide presentations in the lecture hall, and viewing objects in a classroom space. Assisted listening devices are available for use in the museum.

Price: \$120**Members receive 15% discount.**

Cleveland Museum of Art



IN-PERSON COURSE

SOCIAL CONSCIENCE AND THE AMERICAN BROADWAY MUSICAL, ACT 1

Arnold Hirshon, Vice Provost and Lindseth Family University Librarian Emeritus, CWRU

Thursdays, April 4–May 2
10 a.m.–noon ET

Interpreting social conscience through the history of the American musical is a unique means to understand our national values and priorities through a medium that aims to educate while entertaining an audience. This course will explore the history of the Broadway musical through the issues of race and ethnicity, immigration and the American dream, interpersonal relationships and tolerance, counterculture, the sexual revolution, generation gaps, ecology, ethics, and religion. Discussions will include both shows that were hits and continue to be performed today, as well as flops and shows that have become dated or forgotten, whether written both by well-known or unknown composers, lyricists, and book writers.

Price: \$150

Members receive 15% discount.

Landmark Centre Bldg., 25700 Science Park Drive,
 Beachwood

REMOTE COURSE

BLACK VISIONS, BLACK VOICES, AND THE POWER OF BLACK ART: AFRICOBRA AND OHIO

Regennia N. Williams, Associate Curator of African American Community Partnerships, Programs, and Traveling Exhibitions and Distinguished Scholar of African American History and Culture, Cleveland History Center of the Western Reserve Historical Society

Tuesdays April 9 & April 16
7–8:30 p.m. ET

AFRICOBRA (African Commune of Bad Relevant Artists) helped transform the way that Black artists saw themselves and the societies in which they lived and worked. This program will use illustrated slide presentations, excerpts from oral history interviews, and commentary from artists and social historians to facilitate a discussion about the Black Arts Movement of the 1960s and beyond as seen through the work of Wadsworth Jarrell, Jae Jarrell, and Nelson Stevens.

Price: \$15 (CWRU students free)

Members receive \$5 discount.

IN-PERSON COURSE

PLEIN AIR PAINTING

Patricia Sigmier, Instructor of Lifelong Learning

Fridays, June 7–28
10 a.m.–2 p.m. ET

Enjoy the experience of painting at the university's scenic Squire Valleeview Farm. The instructor uses watercolor, however any medium is acceptable. The group meets each session at a predetermined location at the farm, paints for 2–3 hours, then gathers for a brown bag lunch and viewing of the paintings. The instructor provides group as well as individual instruction. Some level of experience painting is recommended. Bring a brown bag lunch. Limited enrollment.

Price: \$195

Members receive 15% discount.

Squire Valleeview Farm, 37125 Fairmount Blvd.,
 Hunting Valley



Hebrew

Conversational Hebrew teaches students to communicate in Hebrew and read Israeli newspapers and literature. **Hebrew Literature** is an advanced class, in which students read and discuss, in Hebrew, short stories by Israeli writers. **Classical Hebrew** classes focus on learning the original Hebrew appearing in the Bible. For more information on our Hebrew programs, contact Hallie Bravo at hxb354@case.edu or 216.368.4623.

All Hebrew classes meet online.

Price: \$235

Members receive 15% discount

BEGINNER HEBREW FROM ALEPH-BET

For those with no prior knowledge of the Hebrew alphabet or language

Wednesdays, May 8–June 26

(NO CLASS June 12 & 19)

10 a.m.–noon ET

Leah Cooper, Hebrew Language Instructor

BEGINNER CONVERSATIONAL HEBREW

A beginner class for those with the ability to read Hebrew

Mondays, May 6–June 17

(NO CLASS May 27)

6:30–8:30 p.m. ET

Leah Cooper, Hebrew Language Instructor

ADVANCED BEGINNER CONVERSATIONAL HEBREW

Mondays, May 6–June 17

(NO CLASS May 27)

1–3 p.m. ET

Leah Cooper, Hebrew Language Instructor

INTERMEDIATE CONVERSATIONAL HEBREW

Wednesdays, May 8–June 26

(NO CLASS June 12 & 19)

10 a.m.–noon ET

Rivka Taub, Hebrew Language Instructor

ADVANCED CONVERSATIONAL HEBREW

Tuesdays, May 7–June 18

(NO CLASS June 11)

10 a.m.–noon ET

Rivka Taub, Hebrew Language Instructor

Thursdays, May 9–June 20

(NO CLASS June 13)

10 a.m.–noon ET

Judith Shamir, Hebrew Language Instructor

ADVANCED HEBREW LITERATURE

Tuesdays, May 7–June 18

(NO CLASS June 11)

10 a.m.–noon ET

Judith Shamir, Hebrew Language Instructor

ADVANCED BEGINNER CLASSICAL HEBREW

Thursdays, May 9–June 20

(NO CLASS June 13)

6:30–8:30 p.m. ET

Holly Litwin, Hebrew Language Instructor

History and Culture

IN-PERSON COURSE

BYZANTIUM – THAT OTHER ROMAN EMPIRE

Patrick Moore, J.D., Instructor of Lifelong Learning

Thursdays, April 4–May 23

10–11:30 a.m. ET

After the fall of Rome in the 5th century CE, the Eastern Roman (or Byzantine) Empire remained the most powerful economic, cultural, and military force in the Mediterranean world for another 1000 years. In this course, we will examine and discuss key topics and events, such as: Constantinople, capital of the Byzantine Empire; the Theodosian Walls in Constantinople, which held against attacks by the Huns; the Justinian Law Codes; the religious schism that split the Christian world; the Crusades; and the Muslim conquest of Constantinople, which closed down the Silk Road.

Price: \$120

Members receive 15% discount.

Landmark Centre Bldg., 25700 Science Park Drive, Beachwood

This course is offered with the generous support of the Association for Continuing Education.

IN-PERSON COURSE

BYZANTIUM – THAT OTHER ROMAN EMPIRE

Patrick Moore, J.D., Instructor of Lifelong Learning

Fridays, April 5–May 24

10–11:30 a.m. ET

After the fall of Rome in the 5th century CE, the Eastern Roman (or Byzantine) Empire remained the most powerful economic, cultural, and military force in the Mediterranean world for another 1000 years. In this course, we will examine and discuss key topics and events, such as: Constantinople, capital of the Byzantine Empire; the Theodosian Walls in Constantinople, which held against attacks by the Huns; the Justinian Law Codes; the religious schism that split the Christian world; the Crusades; and the Muslim conquest of Constantinople, which closed down the Silk Road.

Price: \$120

Members receive 15% discount.

Judson Park, 2181 Ambleside Dr., Cleveland

This course is offered with the generous support of the Association for Continuing Education.

IN-PERSON LECTURE

THE HISTORY OF IMMIGRATION & MIGRATION IN CLEVELAND

Greg Deegan, Executive Director, Teaching Cleveland

Thursday, June 13

10 a.m. ET: Light Breakfast & Coffee

10:30 a.m.–noon ET: Lecture

Who came to Cleveland and changed it forever? Teaching Cleveland connects educators, youth, and community members to the city's history and provides a collaborative forum for examining and addressing the current challenges facing Greater Cleveland. In this lecture, Teaching Cleveland's Executive Director will discuss where immigrants settled and why and discuss the European immigrant and Black migrant experiences in the late 19th and early 20th centuries.

Price: \$18

Members receive \$5 discount.

Landmark Centre Bldg., 25700 Science Park Drive, Beachwood

 **Morning Coffee & Conversation Lecture Series**
See page 21 for full information

IN-PERSON LECTURE

**ALBION'S SEED:
UNDERSTANDING
AMERICAN HISTORY
AND POLITICS**

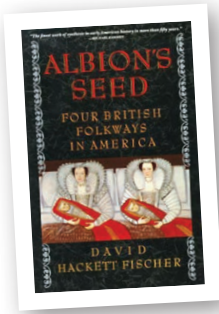
Irving Kushner, Professor
Emeritus of Medicine,
CWRU

Friday, June 14
10–11:30 a.m. ET

The magisterial book *Albion's Seed* is a social history of the first four distinct waves of colonization from Britain to North America – the Puritans, the Cavaliers, the Quakers and the Scots-Irish. In this lecture, we will discuss these groups and how their interactions shaped our history and politics.

Price: \$5
Members receive \$5 discount.

Landmark Centre Bldg., 25700 Science Park Drive,
Beachwood



Horticulture, Nature and Health

IN-PERSON COURSE

BIRDING FOR EVERYONE

Tim Matson, Curator Emeritus of Vertebrate Zoology,
Cleveland Museum of Natural History

Fridays, May 3–June 7
7–9 a.m. ET

This course will explore the different habitats available to migrating birds at the university farms. Students should be prepared to walk at a moderate pace over some hilly and possibly wet terrain. Binoculars are recommended. Meet in the Greenhouse parking lot. Listening devices are available.

Price: \$100
Members receive 15% discount.

Squire Valleevue Farm, 37125 Fairmount Blvd.,
Hunting Valley



Jewish Studies

IN-PERSON COURSE

**RECOVERING HOLOCAUST ART:
A FAIR MEASURE OF JUSTICE**

Brian Glassman, Professor Emeritus, Cleveland State University College of Law

Mondays, April 1–May 20

(No Class: Apr 22 and 29)

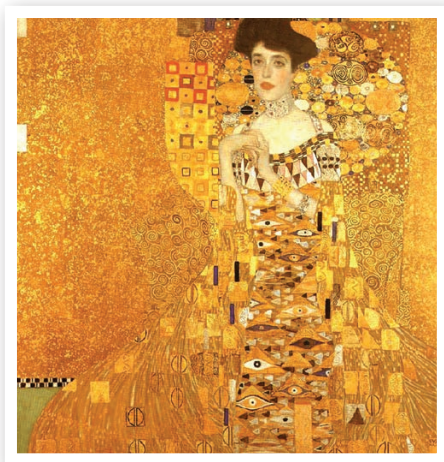
3–4:30 p.m. ET

At the end of World War II, Allied forces attempted to return works of art that had been looted during the conflict to their rightful owners. The fate of art owned by European Jews and stolen by the Nazis, so-called “Holocaust art,” presents a special case. Over the last 25 years, Holocaust art lawsuits have led to international conferences, the opening of state archives, the sharing of information, and ultimately, the return of many more works of art. But a much larger number of works have still not been returned, and legal questions persist as claimants attempt to assert their rights. This course begins with an overview of the ‘movement of art’ in Europe during World War II. It will explore the law of stolen property, and its implications for the return of Holocaust art. It will also examine ongoing recovery efforts, as well as the rules that art museums have promulgated in response to this issue.

Price: \$135

Members receive 15% discount.

Landmark Centre Bldg., 25700 Science Park Drive, Beachwood



REMOTE COURSE

**CREATIVE APPROACHES TO WOMEN IN
THE BIBLE**

Sarah Rosenson, Instructor of Lifelong Learning

Thursdays, April 4–25

1–2:30 p.m. ET

In this interactive online discussion class, we will explore the lives of Deborah, Abigail, and Bathsheba. We will read and discuss commentary and Midrash (stories about the stories in the Bible) about these fascinating women. We will also view and discuss paintings of Biblical scenes. Participants who enjoy creative writing are welcome to write their own Midrash on these Biblical women, and the last class will be reserved as time to share and workshop these pieces. You are welcome to take this class even if you do not plan to write anything yourself!

Price: \$90

Members receive 15% discount.

REMOTE LECTURE

**JEWS AND THE AMERICAN LABOR MOVEMENT:
THE LEADERS**

Keith Danish, B.A., J.D., LL.M.

Wednesday, April 10

10–11:30 a.m. ET

The great waves of Jewish immigration around the turn of the 20th Century had profound effects on the American labor movement and influenced the growth of Social Unionism and New Deal reformism. This program will survey the individuals and organizations involved in these historic movements and explain how Judaism itself inspired reforms in the secular world. The rise of immigrant Jews and their offspring from the shop floor to leadership in the “rag trade” as well as of unions in and beyond the traditional “Jewish trades” will take us up to the current era.

Price: \$5

Members receive \$5 discount.

TWO IN-PERSON LECTURES WITH ALAN LEVENSON, PhD

Schusterman/Josey Chair of Jewish History and Director of the
Schusterman Center for Judaic and Israel Studies, The University of Oklahoma



IN-PERSON LECTURE

ZIONISM: THE VIEW FROM THE BRONX

Thursday, April 11
7 p.m. ET

After World War I, New York City was the cultural capital city of Zionism. Maurice Samuel was a unique witness to the conflict between Louis Brandeis and Chaim Weizmann, a defender against anti-Zionists like Henry Morgenthau, an informal publicist for the poet Chaim Nachman Bialik, a translator for the orator Shmaryahu Levin, and a lover to the belletrist Marie Syrkin. In the pages of *The New Palestine* and at the Café Royale, the Rumanian-born, Manchester-educated Samuel sat at the center of a Jewish Renaissance.

Price: \$5
Members receive \$5 discount.

Landmark Centre Bldg., 25700 Science Park Drive,
Beachwood

IN-PERSON LECTURE

JEWISH JOSEPH/ CHRISTIAN JOSEPH: REMBRANDT AND THE HEBREW BIBLE

Friday, April 12
10 a.m. ET: Light Breakfast & Coffee
10:30 a.m.–noon ET: Lecture

Rembrandt van Rijn lived in a Jewish neighborhood, painted Jewish subjects, and interpreted the Hebrew Bible with extraordinary sensitivity. Possibly through his friendship with Rabbi Menasseh ben Israel, Rembrandt also incorporated post-Biblical Jewish traditions in some of his most celebrated Biblical paintings, culminating in “Jacob Blesses the Sons of Joseph.”

Price: \$18
Members receive \$5 discount.

Landmark Centre Bldg., 25700 Science Park Drive,
Beachwood

 **Morning Coffee & Conversation Lecture Series**
See page 21 for full information

Alan Levenson's visit is made possible by the generous support of the Friends of Lifelong Learning Fund.

IN-PERSON LECTURE

WHAT'S NEW(S) IN ISRAEL?

Doron Kalir, Senior Clinical Professor Of Law,
Cleveland State University

Friday, April 19

1:30–3 p.m. ET

In Israel, no moment is a dull moment—something new is always happening, whether in national security or political realities, recent legislation proposals and key Supreme Court cases, changing coalitions and new governments. What do these events mean for people inside Israel? And what do they mean for American Jewry, and for American-Israeli relations? Israeli-born Professor Kalir will take us on a quick trip through Israel's current national and international affairs, leaving plenty of room for questions and answers.

Free and open to the community

Landmark Centre Bldg., 25700 Science Park Drive,
Beachwood

IN-PERSON LECTURE

CHILDREN'S ART OF THE HOLOCAUST

Carol Salus, Professor Emerita, Art History,
Kent State University

Wednesday, May 1

1–2:30 p.m. ET

In this lecture, we will examine a wide variety of images created by children throughout Europe during the Holocaust, showing their wishes and memories. Many children drew paintings of their homes and family gatherings, while a few recorded actual atrocities and illnesses. The works made by children in hiding or separated from their parents reveal fantasies as well as actual sights they saw. The drawings and paintings all of these children left behind serve as unique historical documents of what needs to be seen, discussed, and remembered.

Price: \$5

Members receive \$5 discount.

Landmark Centre Bldg., 25700 Science Park Drive,
Beachwood

REMOTE COURSE

**ENVISIONING WOMEN FROM THE TORAH:
THE ART OF MIDRASH**

Siona Benjamin, Artist

Thursdays, May 2–23

2–3:30 p.m. ET

The practice of interpreting Biblical text dates back nearly 2,000 years to the first rabbinic Midrashim. Visual artists have unique gifts for interpreting texts and unique tools for creating Midrash (rabbinical and scholarly interpretations of the Torah, Talmud and other sacred writings). Experience this tradition through the eyes of artists, gaining new insights into familiar stories and characters as Siona shares her vision and Midrashic interpretations in this presentation of her own work and many other artists.

Price: \$90

Members receive 15% discount.

IN-PERSON COURSE

**GLOBAL JEWISH FOODWAYS:
FROM ASHKENAZ TO TEL AVIV**

Sarah Livingston, Adjunct Instructor of Jewish Studies
at Ohio University

Wednesdays, May 8–29

10–11:30 a.m. ET

This course will take you on a Jewish food journey through space and time. Each week we will dive into the Jewish foods that deeply inform the collective expression of Jewish culture and ethnicity. We will examine the influence of the Hebrew Bible on what, and how, Jews eat including kashrut, as well as Biblical recipes. Additionally, we will explore the influences of regionality and seasonality on Ashkenazi and Sephardic food while understanding the context surrounding why these foods are intrinsically Jewish and seemingly not. Lastly, our class will delve into the multiethnic fabric of modern Israeli cuisine and what exactly is Levantine/Mizrachi food.

Price: \$90

Members receive 15% discount.

Landmark Centre Bldg., 25700 Science Park Drive,
Beachwood

TWO IN-PERSON LECTURES WITH TED MERWIN, PhD

Senior Writer, Jewish Federations of North America

IN-PERSON LECTURE

WHERE HARRY MET SALLY: THE DELECTABLE HISTORY OF THE JEWISH DELI

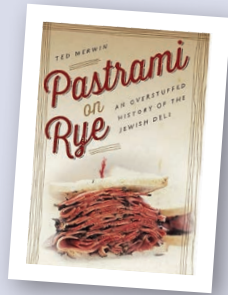
**Wednesday, May 8
7 p.m. ET**

For much of the 20th century, the corner Jewish deli was an iconic institution in both Jewish and American life—a kind of homeland for the soul, with pickles on the side. As a social space it rivaled the synagogue as the primary gathering place for the Jewish community. At the same time the deli became an icon in popular culture, featured in a plethora of plays, films, TV shows, songs, and stand-up routines. From John Belushi's "Samurai Deli" skit on *Saturday Night Live* to Rob Reiner's late-1980s rom com, *When Harry Met Sally*, to the scenes in the Stage Deli in *The Marvelous Mrs. Maisel*, the deli and its fare have been embraced by Jews and non-Jews alike as a delicious emblem of Jewish culture in America. But does the deli have a future in an age of health-consciousness, gourmet food trends, and fusion cuisine? And what, if anything, has taken the place of the deli as a "secular synagogue" for Jews to get together in a non-religious space?

Price: \$5

Members receive \$5 discount.

Landmark Centre Bldg., 25700 Science Park Drive,
Beachwood



IN-PERSON LECTURE

MOVIN' ON UP: JEWS AND UPWARD MOBILITY IN POPULAR ENTERTAINMENT

Thursday, May 9

10 a.m. ET: Light Breakfast & Coffee

10:30 a.m.–noon ET: Lecture

Long before Tevye sings about the kind of ostentatious house he wishes his family could inhabit in *Fiddler on the Roof*, the complicated Jewish relationship with our homes has been key to understanding depictions of Jews in American pop culture. From Lower East Side tenements to uptown luxury apartment buildings to Catskills hotels to suburban McMansions, the locations of Jewish settlement and the dwellings that Jews have occupied have been a major theme in American humor. This talk will look at representations of Jewish residences in vaudeville, stand-up comedy, and sitcoms (including *Seinfeld* and *Curb Your Enthusiasm*) to trace how increasing affluence among Jews has been satirized in ways that reveal underappreciated aspects of the American Jewish domestic experience.

Price: \$18

Members receive \$5 discount.

Landmark Centre Bldg., 25700 Science Park Drive,
Beachwood

 **Morning Coffee & Conversation Lecture Series**
See page 21 for full information

Educational Travel Program

Explore the World with CWRU

LANDSCAPES OF PORTUGAL

April 11–April 20, 2024

Trip Leader: Sharona Hoffman

Professor of Law & Bioethics, Edgar A. Hahn

Professor of Jurisprudence, CWRU



THE CELTIC LANDS: 80TH ANNIVERSARY OF THE D-DAY INVASION

May 28–June 7, 2024

Trip Leader: John Broich

Associate Professor, Department of History, CWRU



THE WORLD IS YOUR CLASSROOM

- Visit international destinations with faculty experts sharing their in-depth knowledge and love of learning
- Gain access to behind-the-scenes sites, cultural treasures and educational activities
- Travel with small groups of Case Western Reserve alumni and friends
- Start your journey from any place in the world
- CWRU's Luminary Society members may receive additional discounts on CWRU Educational Travel programs. For further information on Luminary Society travel discounts only, please contact The Office of Strategic Giving at 216.368.4460

ADRIATIC & THE DALMATIAN COAST: VENICE TO ATHENS

September 25–October 3, 2024

Trip Leader: Jenifer Neils
Elsie B. Smith Professor Emerita
Departments of Classics and Art History, CWRU



SCANDINAVIAN AND BALTIC CAPITALS

July 22–August 1, 2024

Trip Leader: Sunniva Collins,
Associate Dean for
Professional Programs,
Professor, Mechanical and
Aerospace Engineering,
CWRU



THE NEW BERLIN—A CITY REUNITED

October 18–October 26, 2024

Trip Leader: Catherine Scallen
Andrew W. Mellon Professor Emerita in the
Humanities, CWRU; and Kenneth Ledford, Professor,
Department of History and School of Law, CWRU

For more information or to sign up, visit
case.edu/lifelonglearning/travel
or contact Sarah Doody at sxd618@case.edu or 904.432.3141

TWO IN-PERSON LECTURES WITH BRIAN AMKRAUT, PhD

Vice President, Workforce Credentialing and Community Impact,
Mercy University, former Executive Director of Siegal Lifelong Learning, CWRU



IN-PERSON LECTURE

ANTI-SEMITISM IN AMERICA, 2024 VERSION

Thursday, May 16

7 p.m. ET

While anti-Semitism never ever disappeared from American life, the last half decade – beginning with the shooting at Tree of Life Synagogue in Pittsburgh and running through the ongoing aftermath of October 7, 2023 – has seen a resurgence bucking the trend of progress in this arena since World War II. The session examines the cultural, political, religious, and economic trends that have given rise to this resurgence and explores the outlook for coming years.

Price: \$5

Members receive \$5 discount.

Landmark Centre Bldg., 25700 Science Park Drive,
Beachwood

IN-PERSON LECTURE

WHERE HAVE ALL THE COLLEGE STUDENTS (AND COLLEGES) GONE?

Friday, May 17

10 a.m. ET: Light Breakfast & Coffee

10:30 a.m.–noon ET: Lecture

Since hitting a peak in 2010, the number of high school graduates attending college has steadily declined. Increasingly students and their families are choosing other pathways for career success and the value of the college experience and degree have come into question. At the same time we can see many colleges around the country either closing or substantially reducing their programmatic offerings. Why has the allure of college changed so dramatically in such a short amount of time and what might a restructured model of higher education in America do to change those trends?

Price: \$18

Members receive \$5 discount.

Landmark Centre Bldg., 25700 Science Park Drive,
Beachwood

 **Morning Coffee & Conversation Lecture Series**
See page 21 for full information

TWO IN-PERSON LECTURES WITH GREGG SWAIN

Mah Jongg Historian and Psychologist



IN-PERSON LECTURE

MAH JONGG: HOW A CHINESE GAME BECAME A JEWISH TRADITION

Monday, May 20
1–2:30 p.m. ET

Have you been hearing a lot lately about Mah Jongg, and wondering what it's all about, and why it's often referred to as Jewish game? How did this pastime originally played by Chinese men, become a mainstay of Jewish American women's lives? Learn how this game enriched the lives of Jewish women in the States, promoting fellowship and a sense of community. It's no surprise others are embracing the game now as well—it's one of the best activities for a life well-lived.



Price: \$10

Members receive \$5 discount.

Landmark Centre Bldg., 25700 Science Park Drive,
Beachwood

IN-PERSON LECTURE

MAH JONGG: A WINDOW INTO CHINA

Tuesday, May 21
10 a.m. ET: Light Breakfast & Coffee
10:30 a.m.–noon ET: Lecture

Mah Jongg is considered to be the national game of China. The game has a fascinating history, with roots tracing back to versions played by educated men in the 1300s. Throughout the years, it evolved into the version played today by millions of people around the world. The rituals of the game and the tiles themselves provide an insight into Chinese culture and art. Spend a bit of time exploring the mysterious images on the tiles, and, by doing so, see how the game offers a view into this ancient culture.

Price: \$18

Members receive \$5 discount.

Landmark Centre Bldg., 25700 Science Park Drive,
Beachwood

 **Morning Coffee & Conversation Lecture Series**
See page 21 for full information

REMOTE COURSE

**THE ISRAELI-PALESTINIAN CONFLICT:
DUELING NARRATIVES**

Steve Klein, Instructor, Tel Aviv University, and
Haaretz English Edition Senior Editor

Tuesdays, May 21–June 25

1:30–3 p.m. ET

The 2023 war between Israel and Hamas has reignited a lot of debate and emotions over the Israeli-Palestinian conflict, but many people aren't familiar with or are misinformed about its roots and its evolution. This course aims to offer insight into the dueling narratives of Israeli and Palestinian nationalism, which combine tales of suffering, redemption and victimhood. It will survey the significant periods and events including the British Mandate period, the stretch of Arab-Israeli wars, the Oslo era and the cycle of conflict with Hamas.

Price: \$135

Members receive 15% discount.

REMOTE COURSE

CONTEMPORARY ASIAN ART IN THE DIASPORA

Siona Benjamin, Artist

Mondays, June 3–24

2–3:30 p.m. ET

The class will explore the work and influences of artists who were born and raised in Asia, but now live in the West. Their inspiration often is drawn from ancient, traditional cultures, yet they are creating contemporary art—here and now. Learn how they make these links between old and new and how they live the transition through the act of immigration. Students will explore this multicultural mosaic and, via hands-on experience, create their own place in it. Students will also learn about the art of the Indian miniature paintings and how artists use this in their contemporary artwork. The technique of miniature painting will be discussed and shown.

Price: \$90

Members receive 15% discount.

REMOTE COURSE

**ANGELS AND DEMONS: HOW DO JEWISH AND
CHRISTIAN UNDERSTANDINGS DIFFER?**

Todd Rosenberg, Attorney,
Instructor of Lifelong Learning

Thursdays, June 6–27

7–8:30 p.m. ET

Do Jews believe in angels, Satan, and demons? It depends upon whom you ask, but the Hebrew Bible and traditional Jewish sources have a lot to say about each of these. How do Judaism and Christianity differ when it comes to these topics? Find out in a 4-part class. Jews, Christians, and all others are welcome. Written materials will be provided for your reference. Come with lots of questions!

Price: \$90

Members receive 15% discount.

Literature and Writing

IN-PERSON LECTURE

ACE BOOK DISCUSSION DAY

Barbara Burgess-Van Aken,
Lecturer, Department of English,
CWRU

Monday, April 15
9:30 a.m.–2 p.m. ET

Elif Shafak works magic by intertwining the events in the Cypriot Civil War (1947) and its aftermath. The impacts on victims, on survivors and on the ecology of the natural world are woven and re woven in this radiant work. Meet the luminous narrator, a fig tree, whose wisdom affirms that all life on earth is layered with interconnections.

Read: *The Island of Missing Trees*, Elif Shafak

Price: ACE members \$40; non-members \$45
Members receive \$5 discount.

St. Paul's Episcopal Church, 2747 Fairmount Blvd.,
Cleveland Heights



IN-PERSON COURSE

CHARLOTTE BRONTE'S *JANE EYRE* AND *VILLETTE*

Sandy Zagarell, Donald R. Longman Professor of
English Emerita, Oberlin College

Mondays, April 15–May 20
1–2:30 p.m. ET

It may seem astonishing that Charlotte Bronte wrote both *Jane Eyre* (1847) and *Villette* (1853). The first is widely celebrated as the story of its woman protagonist's ultimate self-fulfillment and happy marriage in the face of seemingly insurmountable odds. The second features a woman whose loneliness and emotional vulnerability are never fully reversed, though she finally achieves economic self-sufficiency. Are these two novels perhaps two sides of one coin, with Lucy Snowe of *Villette* a somber double of Jane Eyre? Or do they represent shifts in Bronte's vision of the world? How, together and separately, do they reflect circumstances of the lives of middle class women without family or means in nineteenth-century England? We'll explore these and other questions through attention both to Bronte's use of elements of fiction, including characterization, plot, point of view, style, and language, and to the novels' contexts.

Price: \$135

Members receive 15% discount.

Landmark Centre Bldg., 25700 Science Park Drive,
Beachwood

📖 Revisiting the Classics

IN-PERSON COURSE

WRITING CREATIVE NONFICTION

Linda Tuthill, Instructor of Lifelong Learning

Tuesdays, April 30–June 11
1–3 p.m. ET

Creative nonfiction spans a gamut of possibilities, taking the stuff of life and transforming it into story, a true story but seen through the lens of one person's sensibilities. Listening to the work of others and offering feedback in a way that helps the writer is an important component of the class.

Price: \$150

Members receive 15% discount.

Squire Valleevue Farm, 37125 Fairmount Blvd.,
Hunting Valley

*This course is offered with the generous support of
the Association for Continuing Education.*

REMOTE COURSE

NEW ORLEANS WOMEN WRITERS

Monica Miller, Associate Professor of English, Middle
Georgia State University

Tuesdays, April 30–June 4
3–4:30 p.m. ET

In this class, we will analyze, discuss, and learn about a wide range of fiction by nineteenth-, twentieth-, and twenty-first-century New Orleans women writers. Beginning with Kate Chopin's Creole stories of the nineteenth century, we'll also read short stories by Alice Dunbar Nelson, Shirley Anne Grau, Ellen Gilchrist, Moira Crone, and N.K. Jemisin. These works represent a wide range of topics, themes, and people, all set in the richly diverse setting of New Orleans, from the Southern Gothic to the "Southern Gnostic" (as Moira Crone's work has been characterized). Readings will be provided by the instructor.

Price: \$135

Members receive 15% discount.

📖 Revisiting the Classics

REMOTE COURSE

VINTAGE MUNRO: NOBEL PRIZE EDITION

Angela Fasick, Instructor of Lifelong Learning

Wednesdays, May 1–June 5
10–11:30 a.m. ET

Awarded the Nobel Prize for Literature in 2013 for her masterful command of the short story, Alice Munro has effectively redefined what is possible in just a handful of pages. In her Nobel Prize biography, Robert Thacker assesses Munro's brilliance: "Through their complexity, through their clarity, and through their precision, the stories Munro has published capture the very feelings of what it is like to live, to be alive. " As winter turns to spring and the landscape begins to come alive (and, in many ways, we do, too), join us for an exploration of this Canadian master. In stories that move back and forth through time to investigate the effects of singular moments and decisions, we will meet characters who are as different in circumstances and environment as they are similar in their desire to understand what makes us all human. The text *Vintage Munro: Nobel Prize Edition* will be supplemented by occasional additional readings.

Price: \$135
Members receive 15% discount.

IN-PERSON COURSE

POETRY WRITING

Linda Tuthill, Instructor of Lifelong Learning

Thursdays, May 2–June 13
1–3 p.m. ET

Poems inhabit both the inner and the outer worlds, waiting for us to pause and pay attention as Archibald MacLeish did when he wrote: "For all the history of grief/An empty doorway and a maple leaf." Class members share work at each session, giving and receiving helpful feedback. Please bring 12 copies of a poem you have written to the first class.

Price: \$150
Members receive 15% discount.

Pink Pig, Squire Valleeview Farm, 37125 Fairmount Blvd., Hunting Valley

This course is offered with the generous support of the Association for Continuing Education.

IN-PERSON COURSE

HOMER'S ODYSSEY

Janice Vitullo, Instructor of Lifelong Learning

Tuesdays, May 7–June 11
10–11:30 a.m. ET

Join us as we read and discuss Homer's *Odyssey*, the first fully developed adventure story in Western culture, using a new and highly regarded translation by Emily Wilson. Rich in mythology, the *Odyssey* follows the travels of Odysseus as he tries to return home from the Trojan War and explores themes such as travel, coming of age, hospitality, loyalty, vengeance, trickery and disguise.

Read: *The Odyssey: Homer*, translated by University of Pennsylvania Classics Professor Emily Wilson (ISBN 978-0-39308905-9) As this translation will be heavily referenced during class, students are urged not to purchase a different one.

Price: \$135
Members receive 15% discount.

Landmark Centre Bldg., 25700 Science Park Drive, Beachwood

📖 Revisiting the Classics

ACE BOOK SALE

The ACE Annual Book Sale is held annually in Adelbert Gym on CWRU'S campus. As one of the region's largest book sales, there are tens of thousands of books, DVDs, CDs, vinyl records, rare and collectible books available for purchase.

SATURDAY, JUNE 1

10 a.m.–12 p.m.

Book Sale Preview \$20/person

12 p.m.–5 p.m.

Free Admission

SUNDAY, JUNE 2

12–5 p.m.

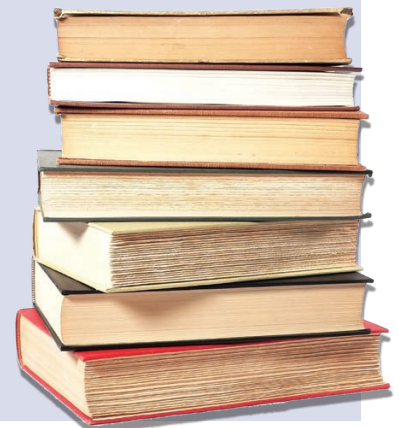
MONDAY, JUNE 3

12–5 p.m.

TUESDAY, JUNE 4

10 a.m.–1 p.m.

Box Sale: \$5/box



IN-PERSON LECTURE

**HARRIET JACOBS' *LIFE OF A SLAVE GIRL*:
BOOK DISCUSSION**

Renée Sentilles, Henry Eldridge Bourne Professor of History, CWRU

Monday, May 13
10–11:30 a.m. ET

Harriet Jacobs published her memoir *Incidents in the Life of a Slave Girl* in 1860, hoping to raise enough royalties to bring home her daughter. The war broke out instead. For over a century, historians and the public alike believed the memoir to be a work of fiction—or written by famed author Lydia Maria Child. The fine writing alongside the extraordinary story made it hard to believe this was nonfiction written by a formerly enslaved woman—but it was.

Read: *Incidents in the Life of a Slave Girl*, Harriet Jacobs

Price: \$15

Members receive \$5 discount.

REMOTE COURSE

**YES, WOMEN WROTE PLAYS IN THE
RENAISSANCE**

Barbara Burgess-Van Aken, Retired Lecturer, English, CWRU

Wednesdays, May 22–June 12
1–2:30 p.m. ET

When we think of Renaissance theater, male playwrights like William Shakespeare and Ben Jonson spring to mind. But we rarely think about plays that women of the period wrote, many of which not only enjoyed popularity in their day, but also reflected feminine perspectives on political issues as well as the gender constraints of their patriarchal society. We will explore how women playwrights compared to their male counterparts, what their political views were, what rhetorical strategies they used to express feminist views, and changes in the reception of women dramatists from the early to late Renaissance. Each week will consider a play by a different female author: Lady Mary Herbert, Countess of Pembroke (Mary Sidney)'s *The Tragedy of Antonie*, Lady Elizabeth Cary, Viscountess, Falkland's *The Tragedy of Mariam*, Margaret Cavendish, Duchess of Newcastle's *The Convent of Pleasure*, and Aphra Behn's *The Rover*. All texts are available online.

Price: \$85

Members receive 15% discount.

📖 Revisiting the Classics

Philosophy and Religion

IN-PERSON LECTURE

**SUPERSTITION AND SCIENCE: ECLIPSES IN THE
GRECO-ROMAN WORLD**

John Sarkissian, Professor Emeritus, Classics, Youngstown State University

Thursday, April 4
10–11:30 a.m. ET

As an eclipse comes over Northeast Ohio on April 8th, this lecture will examine examples of eclipses in ancient Greek and Latin literature. Among philosophers, Thales was said to have predicted the eclipse of May 585 BCE and Anaxagoras (5th Century BCE) accurately explained the causes. Nevertheless, superstitions about eclipses persisted in the Greco-Roman world, and the historians Herodotus, Thucydides, Livy and Tacitus describe the effects they had on people. This presentation will survey what the ancients had to say about these natural phenomena.

Price: \$10

Members receive \$5 discount.

Landmark Centre Bldg., 25700 Science Park Drive, Beachwood

📖 Revisiting the Classics



IN-PERSON COURSE

THOREAU'S ESSENTIAL THOUGHT

Cheryl Wires, Instructor of Lifelong Learning

Tuesdays, April 9–May 7

10:30 a.m.–noon ET

Although Henry David Thoreau was born over two centuries ago, in 1817, his thought is as essential to our troubled times as it is foundational to our nature writing. Chronological collections of environmental essays invariably begin with words from Thoreau the naturalist. Moreover, although his ideas are inherently American, they are influential worldwide. The civil disobedience of Thoreau the essayist famously inspired Gandhi. Laura Dassow Walls's definitive—and eminently readable—biographical portrait demonstrates that Thoreau was not a hermit of Walden but rather a citizen of the world, concerned about the controversies of the day, such as slavery and war in Mexico. Discussing Thoreau's short life long ago, and learning about his thoughts and writing, will deepen our understanding of our own time.

Read: *Henry David Thoreau: A Life*, Laura Dassow Walls

Price: \$75

Members receive 15% discount.

The Normandy, 22701 Lake Road, Rocky River

This course is offered with the generous support of the Association for Continuing Education.

REMOTE COURSE

ETHICS IN MODERN LIFE: DILEMMAS IN LAW AND JOURNALISM

Sarah Rosenson, Instructor of Lifelong Learning

Tuesdays, May 7–21

1–2:30 p.m. ET

In this interactive online discussion class, we will explore some of the ethical issues that lawyers and journalists face. For instance, how should a lawyer handle representing a client they know is guilty? What should a lawyer do if their client insists on taking the stand and testifying falsely? What are the ethical issues that come up when journalists report on mass shootings? Should journalists ever publish stories based only on anonymous sources? Come join the conversation!

Price: \$70

Members receive 15% discount.

Politics

IN-PERSON COURSE

CRISIS AND CONFLICT IN AMERICAN HISTORY

Earl Leiken, Former Mayor of Shaker Heights

Wednesdays, March 20–May 8

10:30 a.m.–noon ET

We're experiencing a crisis and conflict in our country's political life with highly polarized political parties and a sharply divided population as we head into the 2024 election. We will also discuss crises and conflicts of the past including the titanic battle for approval of the Constitution; the long political struggle over slavery; reconstruction, Jim Crow and the Ku Klux Klan; the Gilded Age, its economic disparities and the response of the Progressive movement; the women's suffrage movement; the Great Depression and the New Deal; the blacklist and McCarthyism and the 1960's civil rights struggle. Class discussion will include the relation of these past crises to what we're experiencing today.

Read: *The Soul of America: The Battle for Our Better Angels*, Jon Meacham

Price: \$ 120

Members receive 15% discount.

Landmark Centre Bldg., 25700 Science Park Drive, Beachwood

This course is offered with the generous support of the Association for Continuing Education.

IN-PERSON COURSE

THE STATE OF VOTING RIGHTS IN AMERICA

Barbara Greenberg, J.D., Magistrate for Bedford Municipal Court

Mondays, April 1–May 13 (No Class Apr 22)

1:30–3 p.m. ET

This class will include an historic look back and a look forward to the election of 2024. We will begin with a review of the relevant parts of the Constitution and the Bill of Rights and a study of the Voting Rights Act of 1965. Finally, we will focus on Supreme Court cases regarding redistricting, and the expansion of and limitation to who gets to vote, where, when and how.

Price: \$ 100

Members receive 15% discount.

Lakeland Community College, Rte. 306, Kirtland

This course is offered with the generous support of the Association for Continuing Education.

MORNING COFFEE & CONVERSATION

Start your morning with an opportunity to enjoy a light breakfast and time to socialize prior to the featured lecture. The schedule is as follows:

10–10:30 a.m.: Light breakfast and coffee served

10:30 a.m.–noon: Lecture

Registration required. No walk-ins.

Price: \$18

Members receive \$5 discount.

Registration required. No walk-ins.

Landmark Centre Bldg., 25700 Science Park Drive,
Beachwood

JEWISH JOSEPH/CHRISTIAN JOSEPH: REMBRANDT AND THE HEBREW BIBLE

Alan Levenson, Schusterman/Josey Chair of Jewish History and Director of the Schusterman Center for Judaic and Israel Studies, The University of Oklahoma

Friday, April 12

[See page 9 for details]

MOVIN' ON UP: JEWS AND UPWARD MOBILITY IN POPULAR ENTERTAINMENT

Ted Merwin, PhD, Senior Writer, Jewish Federations of North America

Thursday, May 9

[See page 11 for details]

WHERE HAVE ALL THE COLLEGE STUDENTS (AND COLLEGES) GONE?

Brian Amkraut, Vice President, Workforce Credentialing and Community Impact, Mercy University, former Executive Director of Siegal Lifelong Learning, CWRU

Friday, May 17

[See page 14 for details]

MAH JONGG: A WINDOW INTO CHINA

Gregg Swain, Mah Jongg Historian and Psychologist

Tuesday, May 21

[See page 15 for details]

THE HISTORY OF IMMIGRATION & MIGRATION IN CLEVELAND

Greg Deegan, Executive Director, Teaching Cleveland

Thursday, June 13

[See page 6 for details]

Talk about science with scientists in the Origins Science Scholars Program, presented by Siegal Lifelong Learning and the Institute for the Science of Origins. This unique program offers community members an opportunity to engage with leading scholars in the rapidly developing areas of origins science.

Each evening begins with a presentation by a world-class researcher followed by dinner and a discussion with the speaker.

ORIGINS SCIENCE SCHOLARS

The Origins Science Scholars Program is presented by Siegal Lifelong Learning and the Institute for the Science of Origins (ISO)

IN-PERSON LECTURE

Tuesdays, April 16–May 28

(no lecture on Tuesday, April 23)

5:30–8 p.m. ET

Full series and individual lecture price TBD

Dinner is included in the price.

CWRU, Thwing Center, Room 101,
1111 Euclid Ave, Cleveland

HOW ARTIFICIAL INTELLIGENCE WILL HELP US IN THE FIGHT AGAINST CANCER AND INFECTIONS

Jacob Scott, Associate Professor of Molecular Medicine, Lerner College of Medicine, CWRU; staff in the Departments of Translational Hematology and Oncology Research and Radiation Oncology, Cleveland Clinic; Director, Center for AI in Disease Biology, CWRU

Tuesday, April 16

EVOLUTION, RANDOMNESS, AND BEAUTY: BIOLOGY THROUGH THE LENS OF STATISTICAL PHYSICS

Michael Hinczewski, Associate Professor, Physics, CWRU; Associate Director, Center for AI in Disease Biology, CWRU

Tuesday, April 30

To register, visit:

<https://case.edu/lifelonglearning/lectures/origins>

A.I., NEUROSCIENCE, AND FUNDAMENTAL PHYSICS

George Musser, award-winning science writer, a contributing editor for *Scientific American* magazine, a contributing writer for *Quanta* magazine, and the author of three books on fundamental physics, most recently *Putting Ourselves Back in the Equation* (2023)

Tuesday, May 7

HUMAN ORIGINS: WHY DO WE KEEP LOOKING FOR MORE HUMAN ANCESTORS IN AFRICA?

Patricia Princehouse, longtime Associate Director of the Institute for the Science of Origins: Assistant Professor of Anthropology, State University of New York, Oswego; Director, the NSF-funded Topernawi Project in Turkana, Kenya.

Tuesday, May 14

TESTING MODIFIED THEORIES OF GRAVITY IN GALAXIES

Stacy McGaugh, Professor and Chair of Astronomy, CWRU

Tuesday, May 21

TESTING MODIFIED THEORIES OF GRAVITY IN THE SOLAR SYSTEM

Harsh Mathur, Professor of Physics and Associate Dean for Graduate Studies, College of Arts and Sciences, CWRU

Tuesday, May 28

Membership

Siegal Lifelong Learning offers an optional membership model for participants. Annual membership entitles members to exclusive discounts, priority registration for some popular events, invitations to members-only events and more. A complete list of membership benefits can be found at case.edu/lifelonglearning/about/membership. The cost of membership is \$50 per year per individual. Nonmembers may still register for courses and lectures, but do not enjoy member discounts or benefits.

GIFT CERTIFICATES

Give the gift of learning by purchasing a gift certificate for membership and/or courses and lectures. Contact our office at 216.368.2091 for information.

Registration Policies

DISCOUNTS

Case Western Reserve University alumni and retirees (faculty and staff) and Association of Continuing Education members are entitled to \$10 off the current membership rate.

FINANCIAL AID

Financial assistance is available. Please contact Siegal Lifelong Learning for information.

WITHDRAWALS AND SUBSTITUTIONS

- A 100% refund will be issued to the registered student if a completed withdrawal request is received prior to five business days before the start date of the class or lecture.
- A 50% refund will be issued for withdrawal requests received on or after five, but prior to three business days before the start date of the class or lecture.
- There is no refund for withdrawal requests received on or after three days prior to the start date of the class or lecture; no exceptions will be made.
- If unable to attend, you may substitute another person at no additional cost; please notify of change or substitution at least one day prior to the start date of the class or lecture.
- Withdrawal requests must come directly from the student or his/her designee; the official receipt date is the day and time the request is received in the Siegal Lifelong Learning office.

CANCELLATIONS

Although Siegal Lifelong Learning is committed to delivering all classes, workshops or lectures that are scheduled, there are times when a class, workshop or lecture is canceled due to minimum enrollment requirements. If Siegal Lifelong Learning cancels a class, a 100% refund is automatically processed for participants who do not choose to transfer to another available class. Lifelong Learning staff will make every attempt to notify participants of cancellations via registration information. Participants may also call 216.368.2090 for cancellations.

REFUNDS

Refunds can be processed using the credit card used at the time of registration and payment. All other forms of payment will be refunded by check from Case Western Reserve University to the student. Please allow three to four weeks for the refund check to be processed and mailed to the address given at the time of registration. If there has been an address change, please provide the corrected address with your withdrawal request.

REGISTRATION FORM

MAIL: Send completed form to address below.
ONLINE: case.edu/lifelonglearning/about/membership
FAX: Fax form to 216.368.1861
PHONE: 216.368.2090 or 216.368.2091

Name _____ Birth Year _____

Address _____

City _____ State _____ Zip _____

Telephone _____ Email _____

LIST NAME OF COURSE, LECTURE, EVENT OR WORKSHOP BELOW.

Program Name _____ FEE \$ _____

Program Name _____ FEE \$ _____

Program Name _____ FEE \$ _____

Program Name _____ FEE \$ _____

Program Name _____ FEE \$ _____

Program Name _____ FEE \$ _____

ANNUAL MEMBERSHIP FEE

INDIVIDUAL MEMBER \$50 _____

CWRU RETIRED FACULTY & STAFF,
CWRU ALUMNI, ACE MEMBERS \$40 _____

MORE INFORMATION ABOUT MEMBER BENEFITS:
case.edu/lifelonglearning/about/membership

TOTAL _____

If paying by check, please make payable to
Case Western Reserve University and mail to:

The Laura and Alvin Siegal Lifelong Learning Program
Case Western Reserve University
10900 Euclid Avenue, Thwing Center, Room 153
Cleveland, OH 44106-7116

CREDIT CARD

Mastercard Visa Discover

TOTAL \$ _____

Name on Card

Exp. (MM/YY)

Account No.

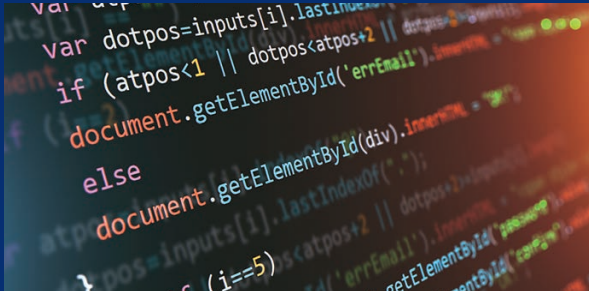
CVV Code



**CASE WESTERN RESERVE
UNIVERSITY**
The Laura & Alvin Siegal
Lifelong Learning Program

CONTINUING PROFESSIONAL STUDIES

The Continuing Professional Studies division of Case Western Reserve University Siegal Lifelong Learning offers part-time certificate programs and boot camps, in partnership with EdX, that help participants gain new skills and enhance career opportunities.



Digital Skills Boot Camps

24 weeks online

CODING | CYBERSECURITY | DATA ANALYTICS

After completing the CWRU Coding Boot Camp, Jake Bartoletta changed his career path from landscaper to software developer. Bartoletta summed up his experience, “because of the knowledge and experienced gained during the boot camp, as well as all of the resources needed to success in the job field, it’s worth every penny.”



For more information, visit: case.edu/cps or call 216.368.2157

COURSE AUDIT PROGRAM FOR SENIOR CITIZENS



This program offers adults ages 65 and older reduced tuition rates for a broad range of courses at CWRU.

Registration is
now open for
Summer semester.

Classes begin
June 28.

FOR MORE
INFORMATION,
CONTACT:
Felicia Westbrooks

It's Never Too Late to Go Back to School

SeniorAuditProgram@case.edu | 216.368.3195 | case.edu/seniorauditprogram



**CASE WESTERN RESERVE
UNIVERSITY**
The Laura & Alvin Siegal
Lifelong Learning Program



**CASE WESTERN RESERVE
UNIVERSITY**
**The Laura & Alvin Siegal
Lifelong Learning Program**

Siegal Lifelong Learning Program
Case Western Reserve University
10900 Euclid Avenue
Cleveland, Ohio 44106-7116

*In anticipation of the total solar
eclipse on April 8, 2024, learn
more about eclipses in ancient
literature:*

SUPERSTITION AND SCIENCE: ECLIPSES IN THE GRECO-ROMAN WORLD

**Thursday, April 4
10–11:30 a.m. ET**

See page 19 for details.

