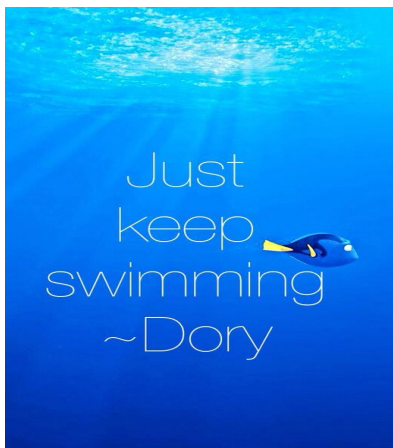


THE HUDSON



Winter 2020 | Issue 20 | 12.08.2020

To our PA Class of 2022, the end of a memorable fall semester is approaching. Keep on, keeping on. PA Class of 2021, we are almost through 4 of 12 clinical rotations. Finish strong, friends.



PA Hx Pop Quiz

1. Which of the following PAs was not part of Duke's inaugural PA program?
 A. Victor Hugo Germino, Jr.
 B. Richard Scheele
 C. Joyce Nichols
 D. Kenneth Ferrell

2. Which state was the first to allow PAs to practice without a specific relationship with a physician?
 1. Michigan
 2. Connecticut
 3. Wisconsin
 4. North Dakota

3. What year did the PANCE first get administered?
 1. 1967
 2. 1973
 3. 1975
 4. 1980

—Hinali Patel, Class of '21, Hudson Society Historian.
 Email your responses to Hinali at hkp13@case.edu

Announcements:

- **Pandemic relief resources at Case**— please consider the *Student Emergency Fund* (e.g funds for medical care, books, food, rent assistance) or *Physical Resource Center* (e.g winter gear, clothing, school supplies) if you are in need.
- **Tend to your mental health**— free virtual tools are offered via the CWRU Counseling Center. More details here: <https://case.edu/studentlife/healthcounseling/student-wellness/virtual-programs>

THE SPOTLIGHT



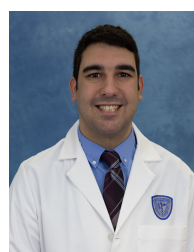
Emily Niemi

"Hi, my name is Emily Niemi and I'm a first year PA student from Michigan! I'm loving living in Cleveland and exploring all the parks."



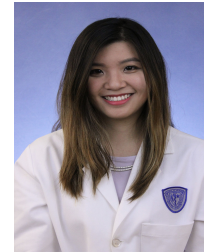
Victoria Anichebe

"I'm Victoria Anichebe, a 2nd year PA-S from Chicago. I just completed my geriatric rotation and I enjoy volunteering for Aging in Place at JFSA."



Giancarlo Schillaci

"Hi, I'm Giancarlo Schillaci and I am a 2nd year PA student. I am from New York City and I enjoy trying new breweries and restaurants in the Cleveland area."



Connie Cheng

"Hey, I'm Connie Cheng and I am a second year PA student who is originally from New Jersey. I love admiring the sunsets in Cleveland!"

What's Happening in December?

- **CWRUinCLE Challenge**— explore Cleveland virtually through 01/31/21 & earn a Dunkin' Donuts/Mitchell's gift card! This remote challenge can be done from anywhere. For complete details, visit: <https://case.edu/studentlife/civicingagement/events/cwrucle-challenge>
- **Volunteer with Food Strong**— help maintain the integrity of Coit Road Farmers Market and/or tend to our beautiful garden beds at the Learning Garden. Various dates from Dec-April.
- **On-campus COVID-19 testing**— offered via saliva analysis through 12/17/20 at Veale for those coming onto campus. Mon-Fri, 6am-6pm. Walk-ins or appointments available.



SCHOOL OF MEDICINE
 CASE WESTERN RESERVE
 UNIVERSITY

1843 - 2018
 CELEBRATING
175
 YEARS

Physician Assistant Program