

Governmental Epi at CDPH: Audience, Collaboration, and Expertise

By Maleek Cusack
 Supervised by Vinh Trinh, MPH, Epidemiologist
 Hosted at the Cleveland Department of Public Health (CDPH)

Population Served
 Cleveland Residents

Learning Objectives

- Applying data tidying and transformation skills in R to public health surveillance datasets
- Create or assist with data briefs and reports on various public health subjects while employing best practices and city branding guidelines
- Use GIS to produce production-quality visualizations for data briefs, reports, or stand-alone maps

Activities and Deliverables

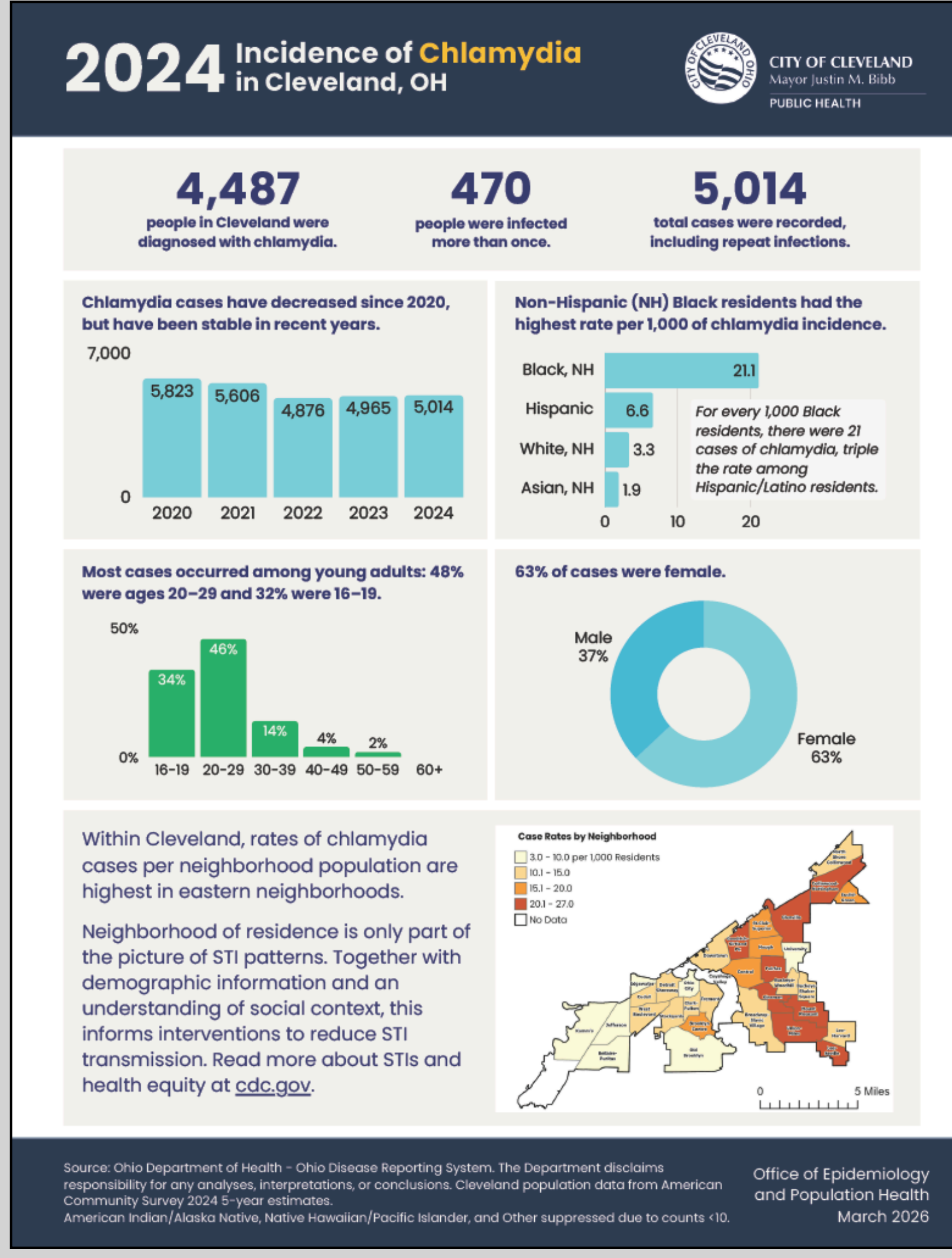
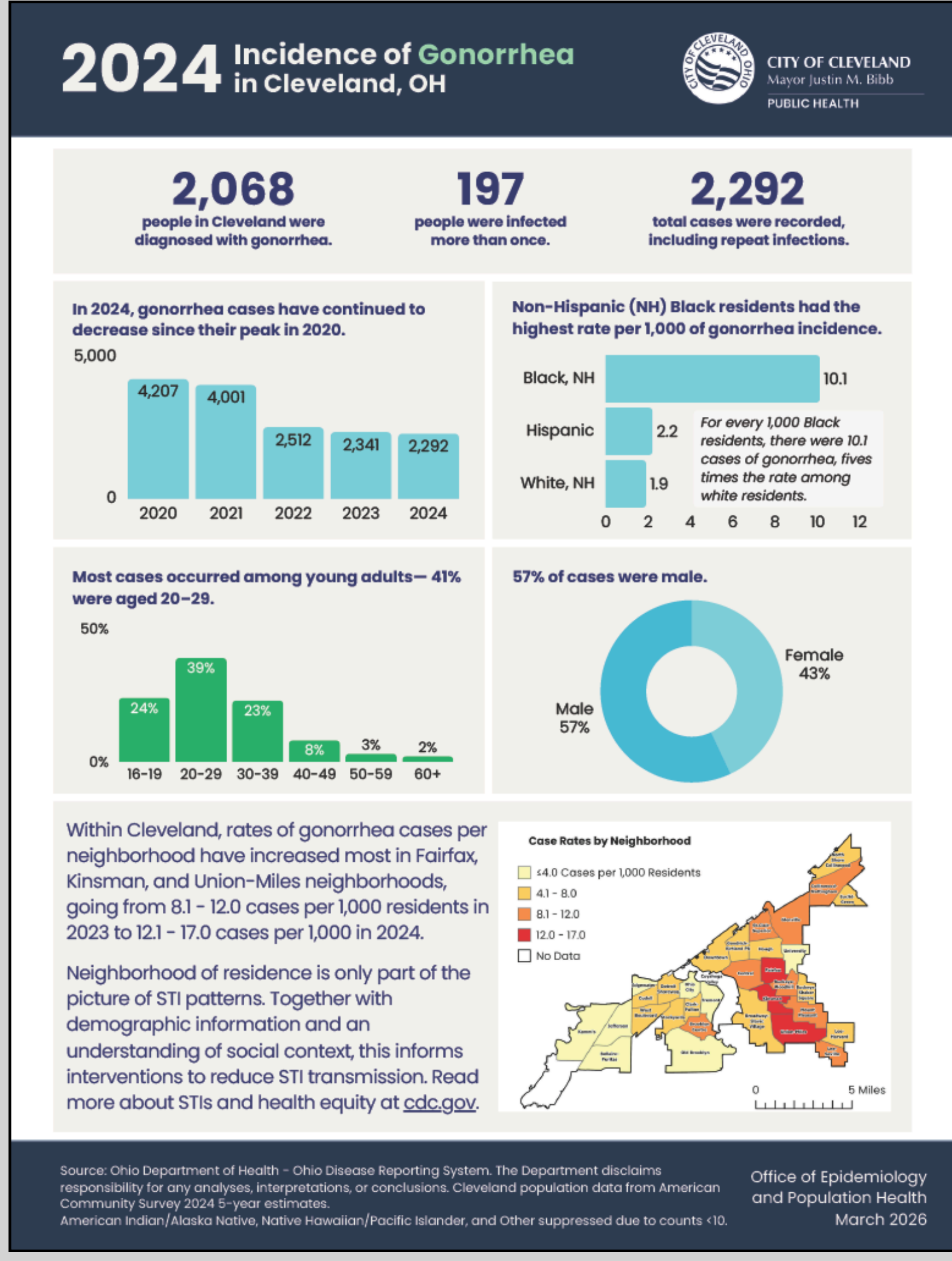
- 2024 STI (Chlamydia, Gonorrhea, and Syphilis) Infographics
 - External/public audience
- Tracking LeadSafe Progress at the City
 - Internal and external audience
- 2025 Cleveland Childhood Lead Poisoning Data Brief
 - Internal and external audience

Lessons Learned

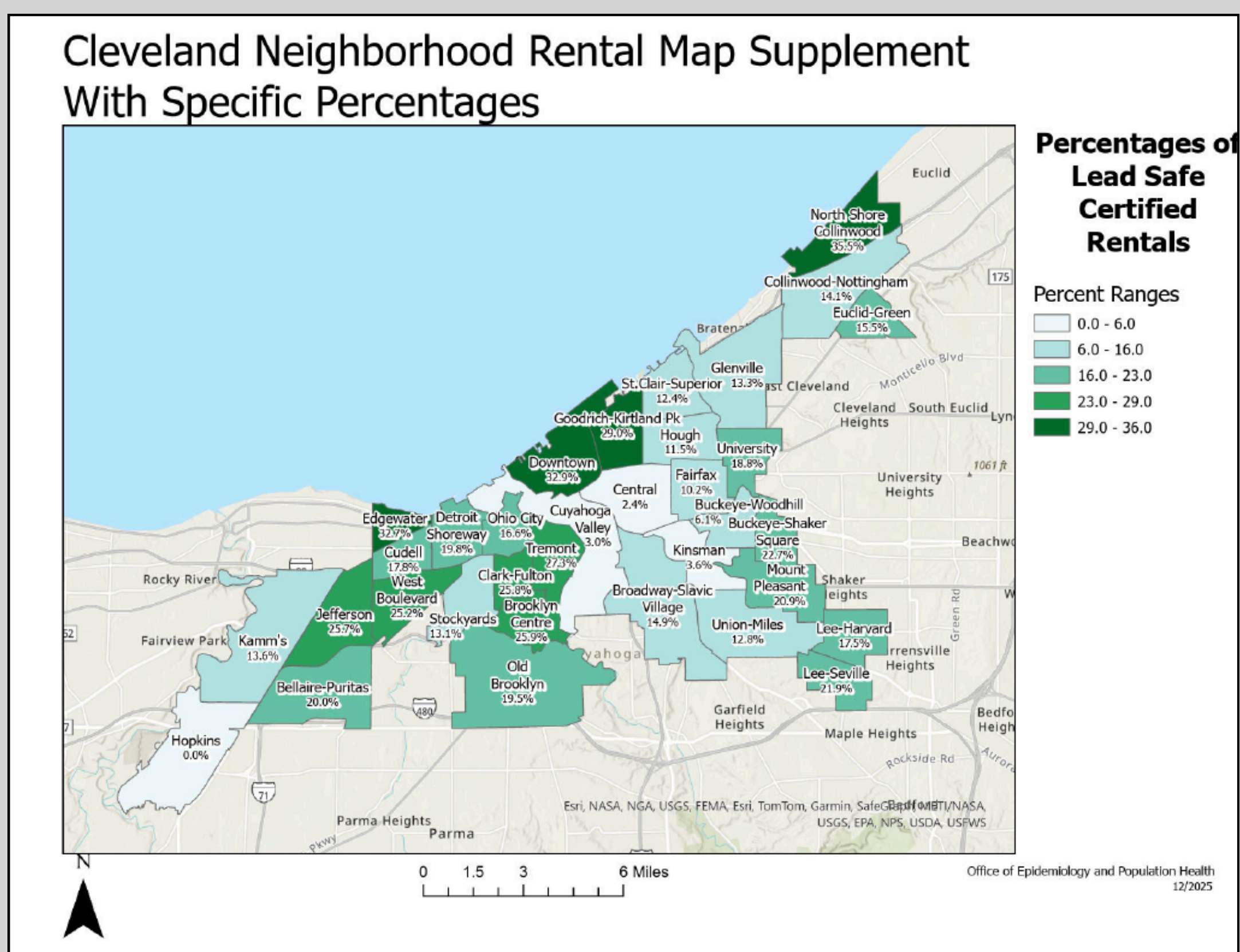
- Audience is principal
- Communication skills are needed to facilitate interdisciplinary collaboration
- Importance of data management and having a clean workflow
- Consider both likely and unlikely interpretations of products

Results

2024 STI Infographics

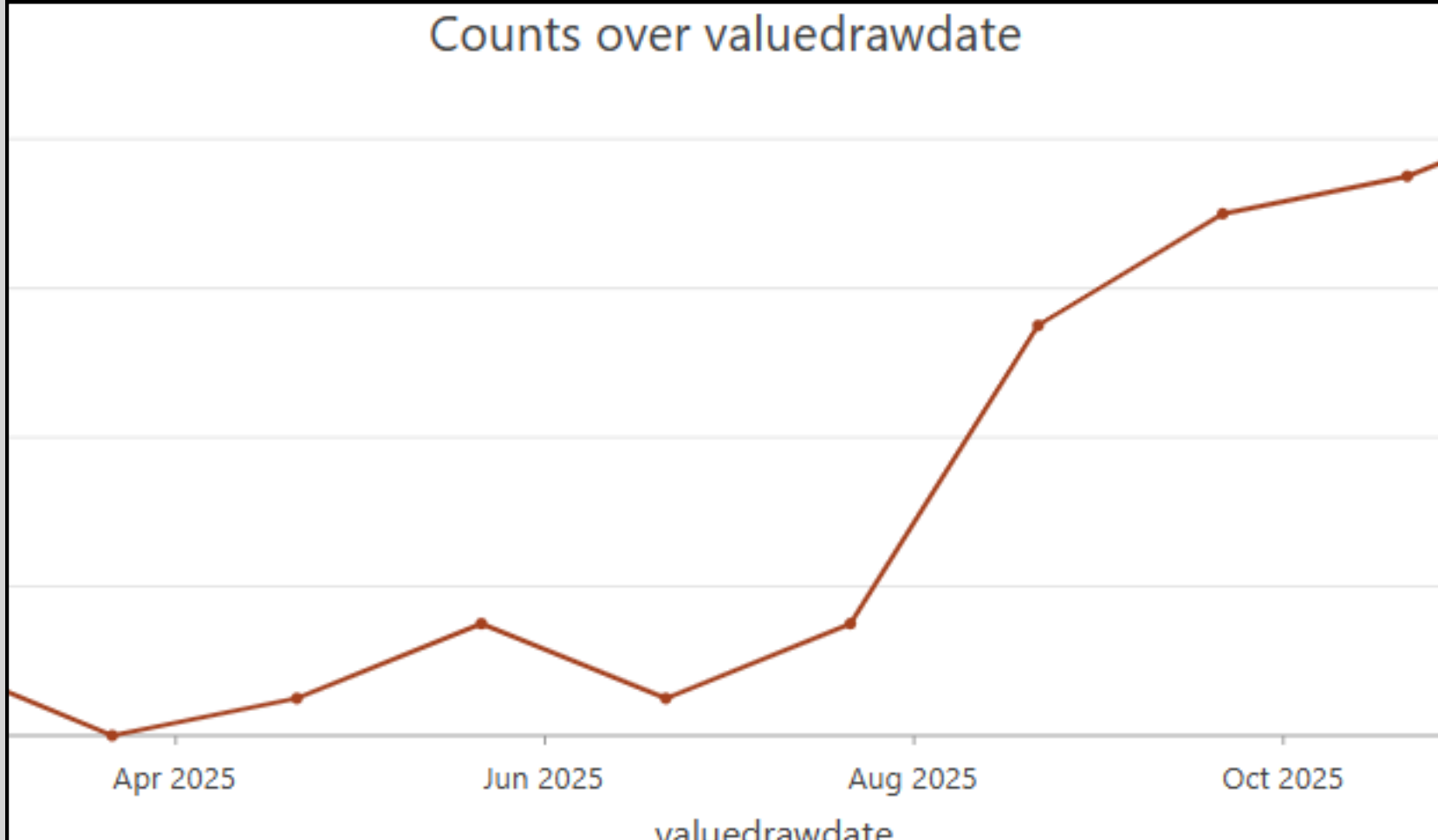
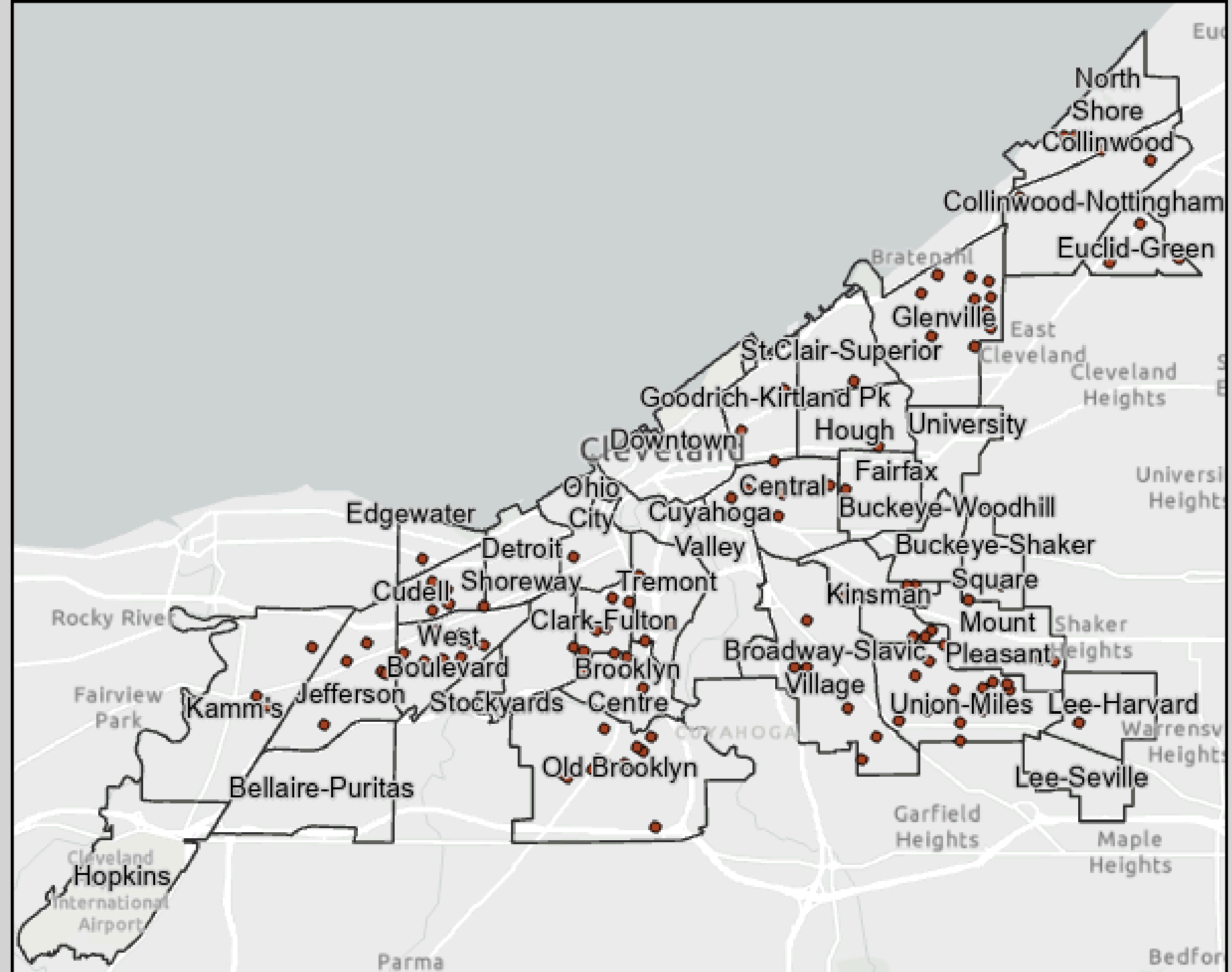


LeadSafe Cleveland Progress



- Left: Map measuring the percentages of LeadSafe certified units in Cleveland relative to the number of rentals in each neighborhood

Lead Report Investigation



- Above: Pattern of unconfirmed capillary tests in 2025
- Left: Randomized points of elevated unconfirmed capillary tests in Cleveland in 2025

Public Health Implications

- Understanding the priorities and day-to-day functioning of a city health department
 - Workforce preparation
 - Priority setting and alignment
 - The importance of BI in government
- Who's doing what?
 - Had to learn about the various other departments. Epidemiology is only one part of the practice of public health, so you must be aware of what pertinent departments are doing
- “Just one health department”
 - More able to appreciate how health departments are responsive to the community
 - There is no guarantee that the structure I've gotten used to will be the same elsewhere
 - It's good to think abstractly about process and to be versatile
- Good Data Management Practices
 - Employing good data management practices prevents the duplication of work. Your methods should be reflected in your file organization
- Expertise
 - Honing skills with software is continuous. There will always be opportunities for personal growth

Additional Material

[2024 STI Report link](#)
[2024 Lead Data Brief link \(Old\)](#)

