



Case Western Reserve University School of Medicine

# Master of Science in Pathology

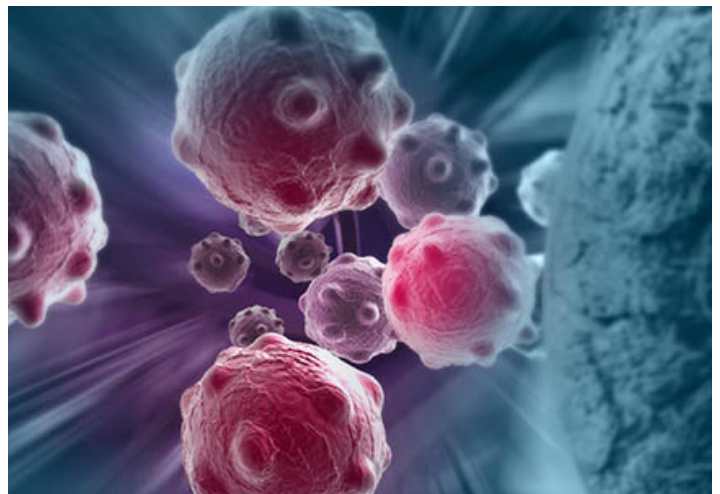
Designed for those who want to cure disease—from the bench or the bedside—Case Western Reserve University School of Medicine’s Master of Science in Pathology program provides the hands-on experience you need to launch your career.

## Why Earn Your MS in Pathology?

Based on our Department of Pathology’s dual identity as a basic science and clinical department, we offer a highly flexible curriculum that is broadly focused on the **molecular and cellular biology of disease**. The coursework can be completed in 12-21 months and customized for different career paths, including:

- A **healthcare track** if you aspire to medical school, PA programs, or U.S. pathology residency programs; and
- A **research track** if you aspire to PhD programs or employment in the biotech/pharmaceutical industry.

In either track, you’ll learn from faculty who are world-renowned for their expertise in five cutting-edge fields: **immunology, infectious disease, neurodegeneration, cancer biology, and pathology**.



**#1**  
private  
medical school  
in Ohio

*U.S. News & World Report*

top  
**16**  
medical school  
for research

*U.S. News & World Report*

## Program Overview

The core pathology coursework of this 30 credit-hour program is focused on the molecular and cellular basis of disease. Required courses include:

- Molecular & Cellular Biology (3-6 credit hours)
- Basic Pathologic Mechanisms (4 credit hours)
- Capstone Project on a self-selected topic (3 credit hours)

From there, you can choose from 50+ electives in the biomedical sciences, including:

- **Concentration electives:** immunology, infectious disease, microbiology, global health and epidemiology, cancer biology, tumor immunology, neurodegeneration, histology, histopathology and more.
- **Healthcare track electives:** anatomy, physiology, nutrition, pharmacology, clinical reasoning and more.
- **Research track electives:** experimental methods, research ethics, statistics for biomedical research, seminars and literature-based discussion courses in various scientific disciplines.

You can also supplement your education with career-building extracurriculars such as research and paid assistantships in clinical or classroom settings.



## Application materials include:

- Online application
- Transcripts
- Resume/CV
- Letters of recommendation
- Statement of Purpose
- MCAT, GRE, or USMLE test scores are optional
- International applicants must submit a score report for an English proficiency exam. The accepted exams and minimum scores are:
  - TOEFL (100)
  - IELTS (7.0)
  - Exemptions are approved for i) Canadian citizens or ii) applicants who have received a bachelor's or master's degree from a U.S. academic institution.
- \$50 application fee

UMC-5041-18-2025



Ready to learn more?  
Reach out to us at [mcbd@case.edu](mailto:mcbd@case.edu)  
or scan to visit our website.



**CASE WESTERN RESERVE  
UNIVERSITY**  
School of Medicine