

Faculty Council Report CME

Committee on Medical Education

Corinne Bazella MD- 2024-25 Chair

Oliver Schirokauer MD, PhD 2025-26 Chair

September 2025

Elected Committee Members

Chair Corinne Bazella, Department of Reproductive Biology (2021-2025)

Melissa Jenkins, Department of Infectious Disease (2021-2027)

Jennifer Yoest, Department of Pathology (2021-2027)

Caroline Abramovich, Department of Pathology (2022-2025)

Preeti Gandhi, Department of Anesthesiology & Perioperative Medicine (2022-2025)

Anantha Harijith, Department of Pediatrics (2022-2025)

Oliver Schirokauer, Department of Bioethics (2022-2025)

Abigail Basson, Department of Nutrition (2023-2026)

Marcus Germany, Department of Medicine (2023-2026)

Timmie Sharma, Department of Dermatology (2024-2026)

Puja Van Epps, Department of Medicine (2024-2026)

Calen Frolkis, Department of Medicine (2014-2027)

Vikas Gampa, Department of Medicine (2024-2027)

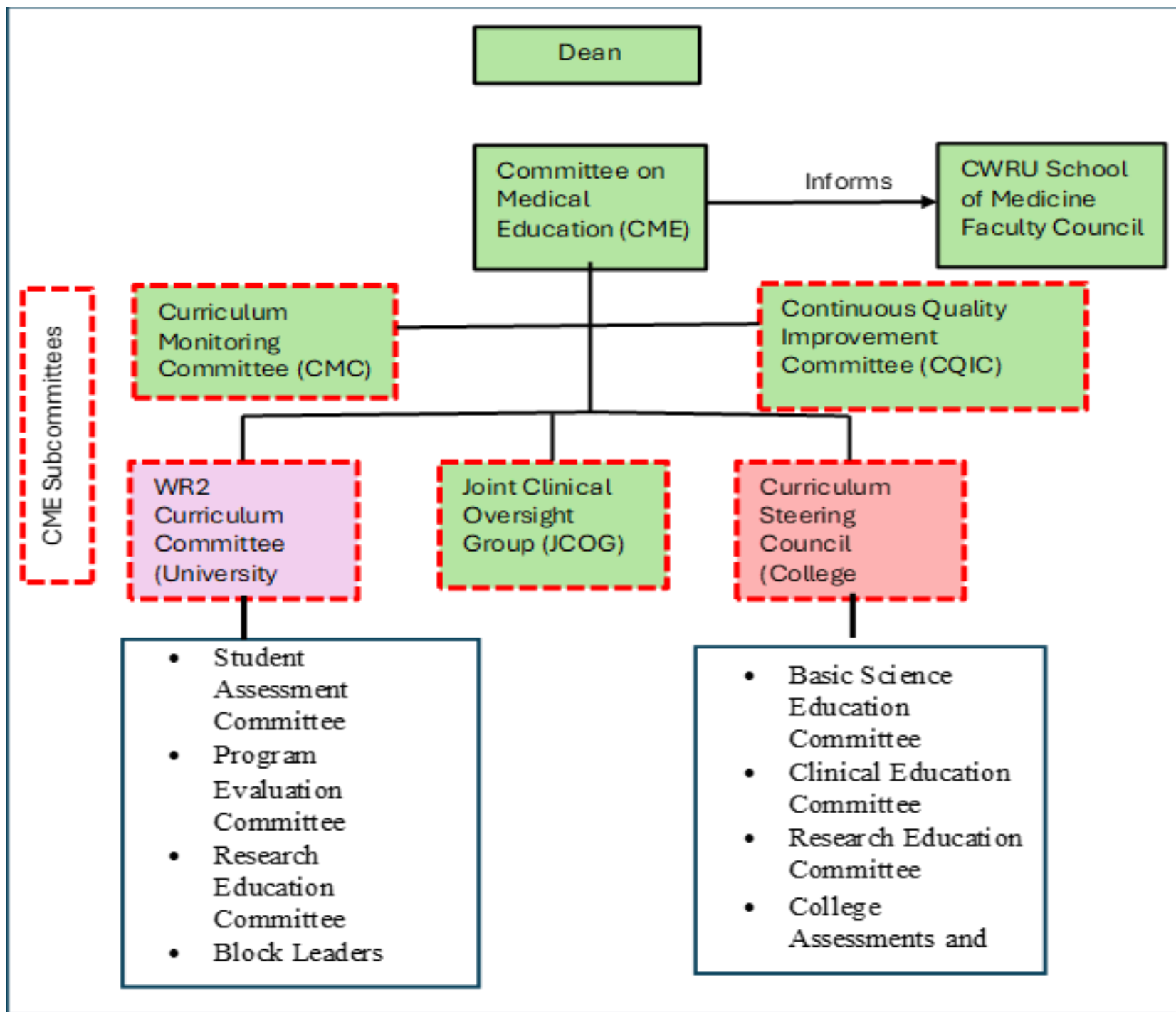
Appointed Faculty Members

Debra Leizman, Department of Internal Medicine (2019-2025)

Vanessa Maier, Department of Family Medicine (2024-2027)

Meetings

- 4th Thursday of the month-Zoom 4-5:50pm
- <https://case.edu/medicine/faculty-staff/committee-medical-education/committee-members>



CME year in review- Routine

- Evaluated, reviewed and made recommendations of CME sub-committee activity through regular reports of:
 - Curriculum Monitoring Committee
 - Continuous Quality Improvement Committee
 - CCLCM Steering Council
 - Joint Clinical Oversight Group
 - WR2 Curriculum Committee

CME year in review- Routine

Yearly data reviewed:

- Student advancement and graduation rates- 100%
- USMLE step results- 2-3% higher than national avg
- Clinical Skills Exam 3 results- 100%
- Resident readiness survey
- Graduate Questionnaire
- Independent Student Analysis survey of student satisfaction with their educational experience
- CMC Phase 1, 2 and 3 reports through Education Program Objective mapping and recommendations for longitudinal curriculum assessment.

Changes

- Approved changed to clinical elective grading policy- to Pass/Fail
- Acting internship assessment tool creation
- Generative AI Task Force creation
- Approval of the Kowal-SAGE Program expansion- 6 visits with a “SAGE”- 65 or older patients over 8 months focusing on communication, healthcare system interactions, and healthcare navigation.

LCME visit prep

- LCME standard dashboard - areas of compliance and non-compliance monitored. Improvement plans considered, reviewed and monitored.
- Reviewed and approved Policies- Graduation Requirements, Student Records/FERPA, Leave of Absence or Extensions, Background Checks, Student Exposure and Prevention, Learning Environment, MS Promotion and Advancement Due process, Policy on Protest and Free Speech, Policy on Student Transfers, Grade Appeals and Inclement Weather Plan.

Faculty Comments

Questions?

CME is an open committee. We invite and welcome your insight.