



Update on University Initiatives and Discussion of Tuition, Room and Board Rates for 2018-2019

February 9, 2018

William A. “Bud” Baeslack III
Provost and Executive Vice President

CWRU Strategic Plan – *Think Beyond the Possible*

Innovative Education

- **Improve Teaching and Learning on Campus** – We will lead innovations that put the university at the national forefront of universities advancing education on campus and online.
- **Embrace our Academic Strengths in New Ways** – We will add professional master’s degree programs, enhance graduate programs and explore new hybrid offerings involving both online and residential education.
- **Increase STEM Success** – We will begin a pilot program to improve undergraduate engagement and persistence in STEM disciplines.
- **Provide coordinated education programs for undergraduates considering health careers** – We will launch an interdisciplinary undergraduate initiative for students who wish to pursue the health sciences.

CWRU Strategic Plan – *Think Beyond the Possible*

Intentional Preparation for Leadership

- **Strengthen the Academic Experience** - We will provide additional experiential and interdisciplinary learning opportunities.
- **Grow the Prominence of Research** – We will expand research opportunities to ensure meaningful and high-quality experiences for all students who desire to participate.
- **Enhance and Expand Opportunities for Student Global Experiences**
- **Enhance Advising, Mentoring and Professional Development Programs for All Students** – We will increase collaboration among undergraduate deans, academic advisors and career services staff to provide students more coordinated support and relevant opportunities.
- **Grow Graduate Students' Career Opportunities** – We will provide graduate students a professional development center that offers training in interviewing, networking and other essential skills.

Provost's Commission on the Undergraduate Experience

- Develop and articulate a philosophy for advancing CWRU's undergraduate experience.
- Formulate recommendations to strengthen the overall value, reputation and desirability of CWRU's undergraduate experience.
- Develop proposals for advancing the quality and excellence of CWRU's academic offerings and undergraduate student experience through forward-looking, creative approaches.

CUE Major Recommendations

- Adopt a single University General Education Requirement (UGER)
- Implement an innovative Explore curriculum
- Build traditions to celebrate our unique institutional identity
- Assemble collaborative advising teams
- Review our curricula to reduce stress and increase flexibility for students
- Foster a thriving campus community

Considerations in Determining Tuition Costs

The University strives to increase the excellence and reputation of our academic programs and improve the quality of the overall student life experience – while keeping a CWRU education affordable

- Factors considered in determining annual tuition increases:
 - Costs associated with maintaining and increasing the quality of the student experience
 - Increased costs of sustaining and enhancing existing programs, activities and infrastructure
 - Costs associated with the creation of new programs, activities and infrastructure
 - National and global economic conditions
 - Indicators of higher education cost increases, e.g., the Commonfund Higher Education Price Index (HEPI)
 - Recent history of tuition increases and future considerations
 - Input/Feedback from Student Forum and other meetings

A summary of cost increases supported by tuition increases

- Increases to support continuing expenses
 - Faculty and Staff Salary Increases (2% anticipated for FY19)
 - Utility Increases – Annual recurring and one-time for major system upgrades
 - Safety, Security and Compliance enhancements
- Increases associated with new investments:
 - New student-oriented facilities
 - New academic programs
 - Enhanced advising and student-retention services
 - Support programs
 - Support for international programs and students
 - Investments in Information Technology

Health Education Campus



Nord Family Greenway



Sears think[box] - An Ecosystem for Innovation & Entrepreneurship



Phase 3 Construction

Floor 6 – Entrepreneurship

Includes: Co-working space, Business support offices, Conference rooms, Bookable offices, think[box] staff offices, Huddle rooms, Phone booths & Storage lockers

Floor 7 – Incubator

Reconfigurable space for early-stage student/alumni offices & business development.

Completion July/August 2018

Want to learn about Sears think[box]?

Check out the FREE - How to think[box] courses

Spring semester – 40+ course offerings that includes:

- Design thinking
- Design software (Corel Draw, SolidWorks)
- 3D Printing, Laser Cutters
- Campus resources for entrepreneurs & innovators
- Start with your 'Value Proposition'
- Group Dynamics
- Printed Circuit Design
- Arduino for beginners
- Embroidery, and many more!

Go to thinkbox.case.edu/happenings
to see dates/times and sign up

Check out think[box] stories and projects on the
website

Bio[Box]

provides undergraduate, graduate, and faculty researchers with the space, tools, and instrumentation to facilitate collaborative learning and research.

biology update

CASE WESTERN RESERVE UNIVERSITY DEPARTMENT OF BIOLOGY

Fall 2017

Bio[box]: Collaborative learning and Independent Research



Associate Professor Dr. Emmitt Jolly and senior Biology major Shireen Bhatia, looking over equipment in the bio[box].

The Department of Biology will be opening a newly created collaborative learning/research space called bio[box] in February. Much like think[box], bio[box] will provide undergraduate and graduate researchers with space, tools, and instrumentation to facilitate collaborative learning and independent research. It is a dedicated laboratory space in which students are encouraged to design and pursue real research questions that they themselves have worked to formulate. They will be using state-of-the-art tools and have support and guidance of faculty.

INSIDE

How Do Species Respond to Changing Environments?	2
Undergraduate Feature: A Broad and Thorough Foundation	4
Gelfand Science and Engineering Fellows	5
Letter from the Chair	6
Faculty Highlights	7
Graduate Student Highlights	7
Two RIBMS Students Win Recognition	8

Department of Biology

Case Western Reserve University
10900 Euclid Avenue
Cleveland, OH 44106-7080
Office: DeGrace Hall 205
Phone: (216) 368-3557
Fax: (216) 368-4672
Web: biology.case.edu

Implementation of New Undergraduate Curricula

- **New minors now available:**
 - Public Health (SOM)
 - Bioethics and Medical Humanities
- **Updated minors:**
 - Communication for Health Professionals
(previously known as “Health Communications”)
- **New minor now approved and coming soon:**
 - African and African American Studies
- **Secondary Majors – a newly approved pathway for students who wish to pursue majors from multiple degree programs**



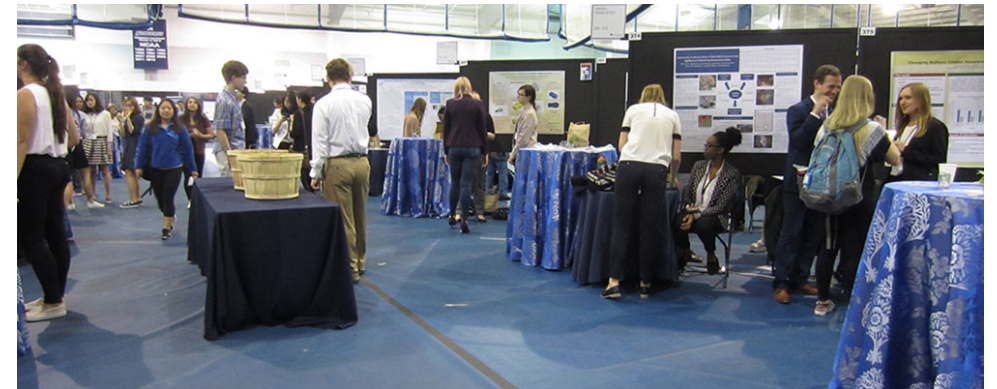
Investments in Undergraduate Advising

- Expanded outreach to students about fellowship opportunities with growth seen in the number of students expressing interest.
- Improvements made in advising publications (newsletters to students and faculty, handbooks, website, etc.).
- Improved coordination between Undergraduate Studies and Undergraduate Admissions to ensure that students will have a smooth transition to college.
- Closer integration between Undergraduate Studies and Students Affairs for Care Management cases.
- Coordination between Undergraduate Studies and Career Center to foster closer collaborations and referrals in the interest of student success.



Investments in Undergraduate Research

- Additional funding provided through SOURCE for student travel to present research at conferences and meetings.
- Associate Director of SOURCE position created to enable the SOURCE office to better serve the needs of the undergraduates and faculty regarding undergraduate research activities. (Position held by Padmini Coopamah Waldron)
- Secured external funding to establish the prestigious Beckman Scholars program at CWRU.



Investments in technology and academic services

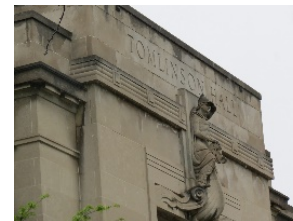
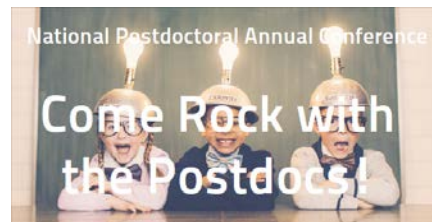
During 2017, multiple improvement projects involving SIS or other academic business processes were completed, such as:

- Enhancements to the searchable schedule of classes
- Grade-change process now online (fast and secure)
- Classroom scheduling streamlined/one-stop reservations
- Digitized and published repository of past General Bulletins
- Launched major upgrade for SIS (to go-live in Summer '18)
- Upgraded SIS mobile technology



Initiatives for Graduate Students

- Automated online degree audit for students and advisors to track graduate academic requirements through the Student Information System.
- Additional University Certificates in graduate coursework to provide additional credentials to recognize a student's preparation and focus in a specific field and their ability to work across disciplines.
- The School of Graduate Studies and the Office of Postdoctoral Affairs will be hosting the National Postdoc Association Conference in April 2018, which will provide engagement beyond the university for postdoc scholars and Ph.D. students. The conference focuses on topics such as scientific communication, professional networking and career development, organizational culture, international and diversity concerns, and advocacy.



© Can Stock Photo



Research ShowCASE



Friday, April 20, 2018 – 9:00am – 3:00 pm

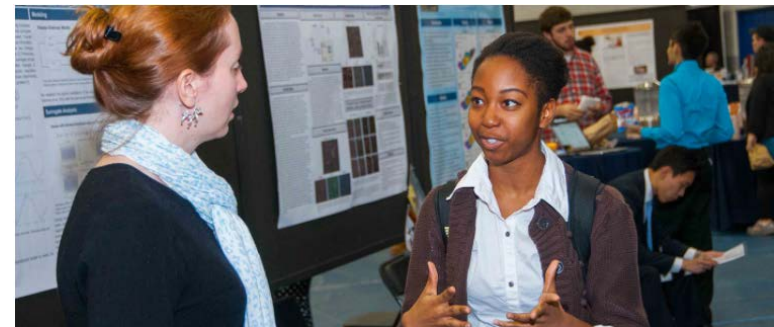
April Research ShowCASE + Intersections - April 20, 2018, Veale Convocation Center

Registration Deadline: March 25, 2018

Registration will open mid-February

Intersections: SOURCE Symposium and Poster Session is where CWRU undergraduates present their research and creative projects. Intersections is an opportunity for the University community and others to see the broad and diverse work that is being done across campus by our outstanding undergraduates.

Intersections is held three times a year: in December (Fall), April (Spring as part of Research ShowCASE) and August (Summer). It is a fun and informative celebration featuring bright, creative students and supportive faculty mentors.



CWRU Internationalization Fast Facts

- More than 30% of CWRU undergraduates study abroad, in all majors.
- More students participate in other experiential learning opportunities abroad than ever before.
- Undergraduate international students increased from 190 in 2009/10 to 664 in 2017/18.
- International students now make up 19.3% of the total active CWRU student population.
- CWRU is the winner of the Institute for International Education's prestigious Andrew Heiskell Award for Internationalizing the Campus.

Center for International Affairs: Looking Forward

- Grow study abroad, internships, co-ops and other experiential learning outside of U.S. and in U.S. for international students.
- Advocate for international students and their rights on the CWRU campus and in the US.
- Raise \$100,000/year worth of study abroad scholarships to support students.
- Serves as a hub for international activity and student support www.case.edu/international
- Develop and expand international partnerships with universities, corporations and governments, including a sustainable presence in select locations.
- Enhance the engagement of international alumni, including ways in which alumni can assist students.

Kelvin Smith Library

Recent Facility Improvements

- Increased number of laptops for checkout for use within KSL
- New mobile furniture in the lower level collaboration rooms
- New adjustable height tables and new seating in lower level atrium
- Updated teleconferencing technology in room 215 classroom

Coming soon

- New first floor (Clapp) reading room flexible tables and chairs, open collaboration spaces, with a wall-length whiteboard



Kelvin Smith Library

Recent Facility Improvements

- “Map It” library stacksmap: identifies the exact shelving range for all print books and journals, and is accessible on your phone
- Freedman Student Fellowships to engage in digital scholarship internships and research projects
- More than 850,000 new electronic resources added
 - E-books, e-journals, government documents, etc.
 - Kanopy streaming video of films now available

Author: [Kelly, Kevin, 1952- author](#)
Title: [The inevitable : understanding the 12 technological forces that will shape our future / Kevin Kelly](#)
Publisher: [New York, New York : Penguin Books, 2017](#)
[Persistent link to this title](#)

Click on the following to:
[Contributor biographical information](#)
[Publisher description](#)

LOCATION	CALL NO.	STATUS	
KSL Stacks 3rd Floor	T173.8 .K45 2017	AVAILABLE	Map It

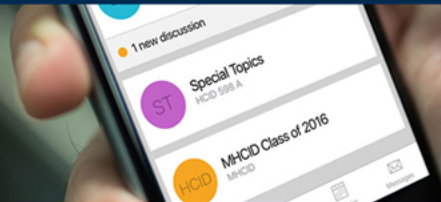
The image shows a digital floor plan of the KSL Third Floor. A red pin is placed on the left side of the map, indicating a specific shelving range. A red arrow points from the 'Map It' button in the table above to this pin. A second red arrow points from the pin to a zoomed-in view of the same area, labeled '& zoom in'. The zoomed-in view shows a detailed layout of the shelving units, with a red pin and a red line indicating the exact location. Labels on the map include 'EMERGENCY EXIT', 'RESTROOMS', 'ELEVATORS', 'STAIRS', and 'QUIET READING'. The zoomed-in view also shows 'EMERGENCY EXIT', 'RESTROOMS', and 'ELEVATORS'.

2018 University Technology Student Impact



Canvas Implementation + Customization

- One Learning Management System for whole campus
- Faculty use – 140% increase over Blackboard in courses listed



Improved Wi-Fi

- Replaced or added 553 WAPs over past two years



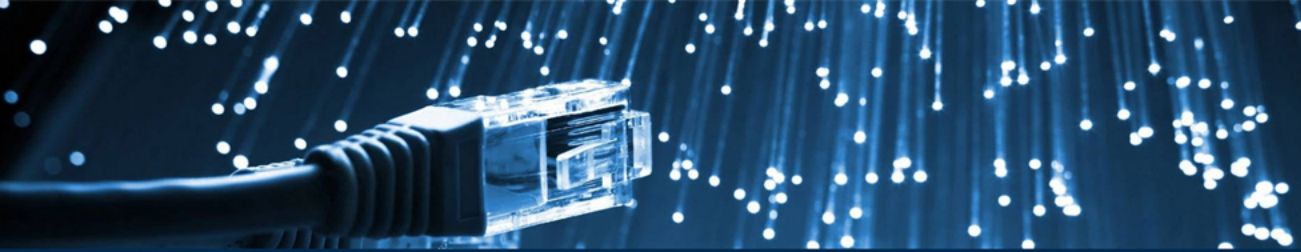
Zoom

- Easy online collaboration for all



UNIVERSITY TECHNOLOGY
CASE WESTERN RESERVE
UNIVERSITY

You Asked for IT – You Got IT



Enhanced Internet Bandwidth for Improved Streaming Service



Added 49 New Titles in Software Center
-Most at no additional cost to students

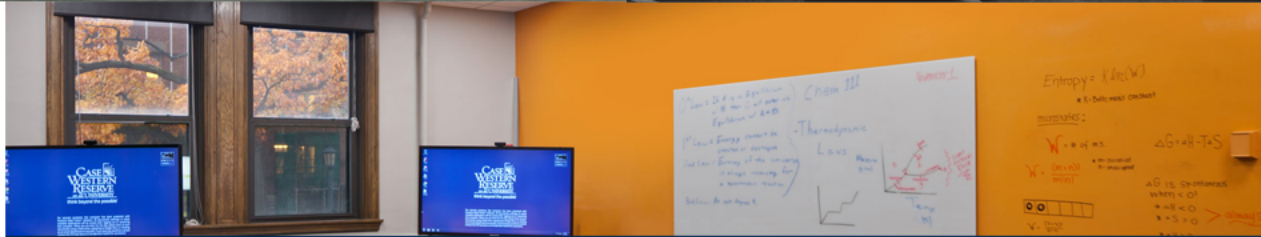


Upgraded [U]Tech C.A.R.E. Center
-Lower level of KSL
-Better service



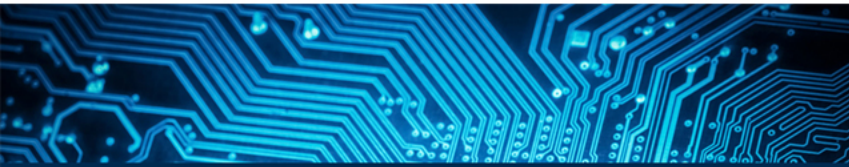
Added Use of HoloLens for Dance, Art and Physics

Expanded Screen-Sharing Technology -Supports student engagement in large lecture halls



Technology + Faculty Assistance with Active, Hybrid and Online Learning





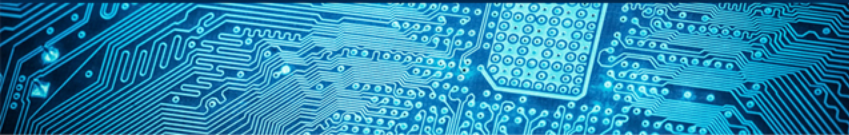
Hosted 3rd Annual Cyberinfrastructure Day
- Featured NSF division director



Assisted with Use of High Performance Cluster in Classes



Supported 15 Research Funding Efforts for \$53 Million



Working with Faculty in Four Departments to Provide HPC Access and Assistance to Students in Seven Courses



Conducted Workshops for Non-Traditional Users of Computing Tech
- Arts, humanities, social sciences, law



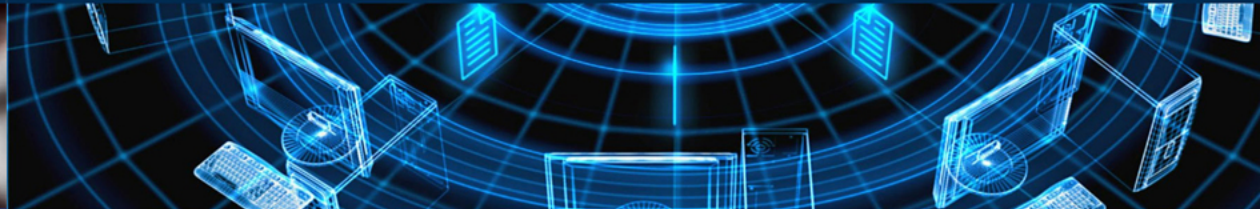
UNIVERSITY TECHNOLOGY
CASE WESTERN RESERVE
UNIVERSITY

Research Technology



Protected You from WannaCry, Meltdown, Spectre and Many More Attacks

New Firewalls + Protection Techniques



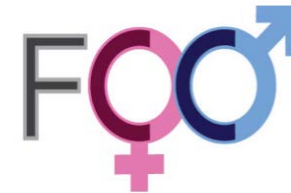
Hosting Secondary Backup at Amazon

Implemented DUO Two-Factor Authentication Pilot



Student Organizations Advised and Supported by the Center for Women

- **NEW!** Body Positivity Feminist Collective @ CWRU (FCC)
- Sexual Assault and Violence Educators (SAVE)
- Voices: A Women of Color Collaborative
- Women in Doctoral Studies (WiDS)
- Women in Science and Engineering Roundtable (WISER)



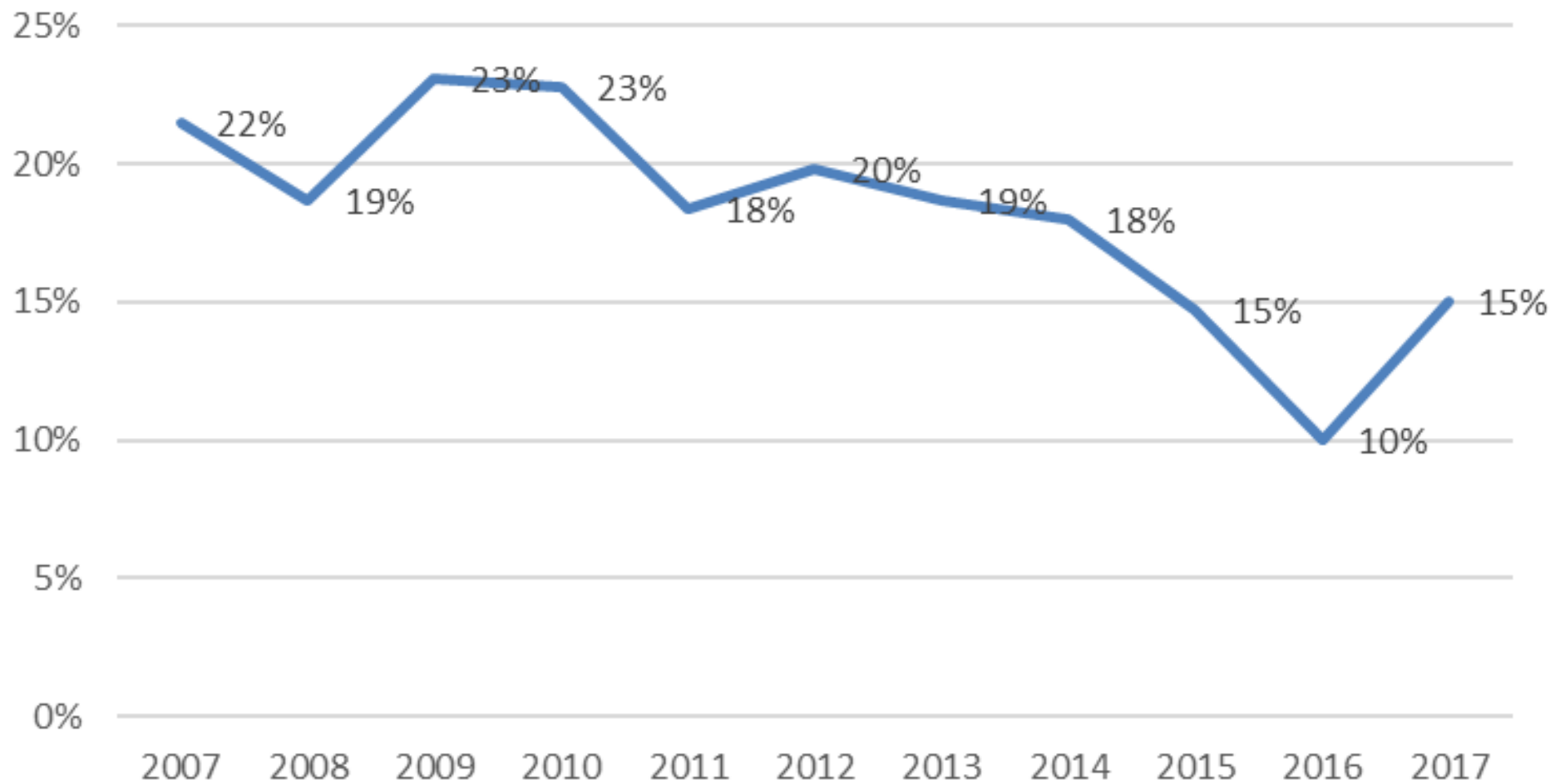
LGBT PROGRAMS & INITIATIVES

- Over 1,120 visits to the LGBT Center
- 2014 senior survey indicates that 13% of CWRU seniors identify as either “lesbian, gay, bisexual, not sure” or “something else” other than heterosexual.
- 20+ first-year transgender and gender non-conforming students have lived in gender inclusive housing since 2015
- Beginning stages of strategic plan, including focus groups for student, staff, and faculty and benchmarking
- 30 Years of LGBT history and activism in honor of the 1988 recognition of the Lesbian Gay Student Union at CWRU; celebrated at Pride Alumni Homecoming Reception
- Thematic focuses on sex education and intersectionality in collaboration with the Center for Women, Greek Life, Social Justice Institute, and Alianza Latina
- 32 LGBTQ+ graduating students participated in Lavender Graduation in 2017, with over 175 people in attendance
- 2018- Adding .5 FTE to the LGBT Center

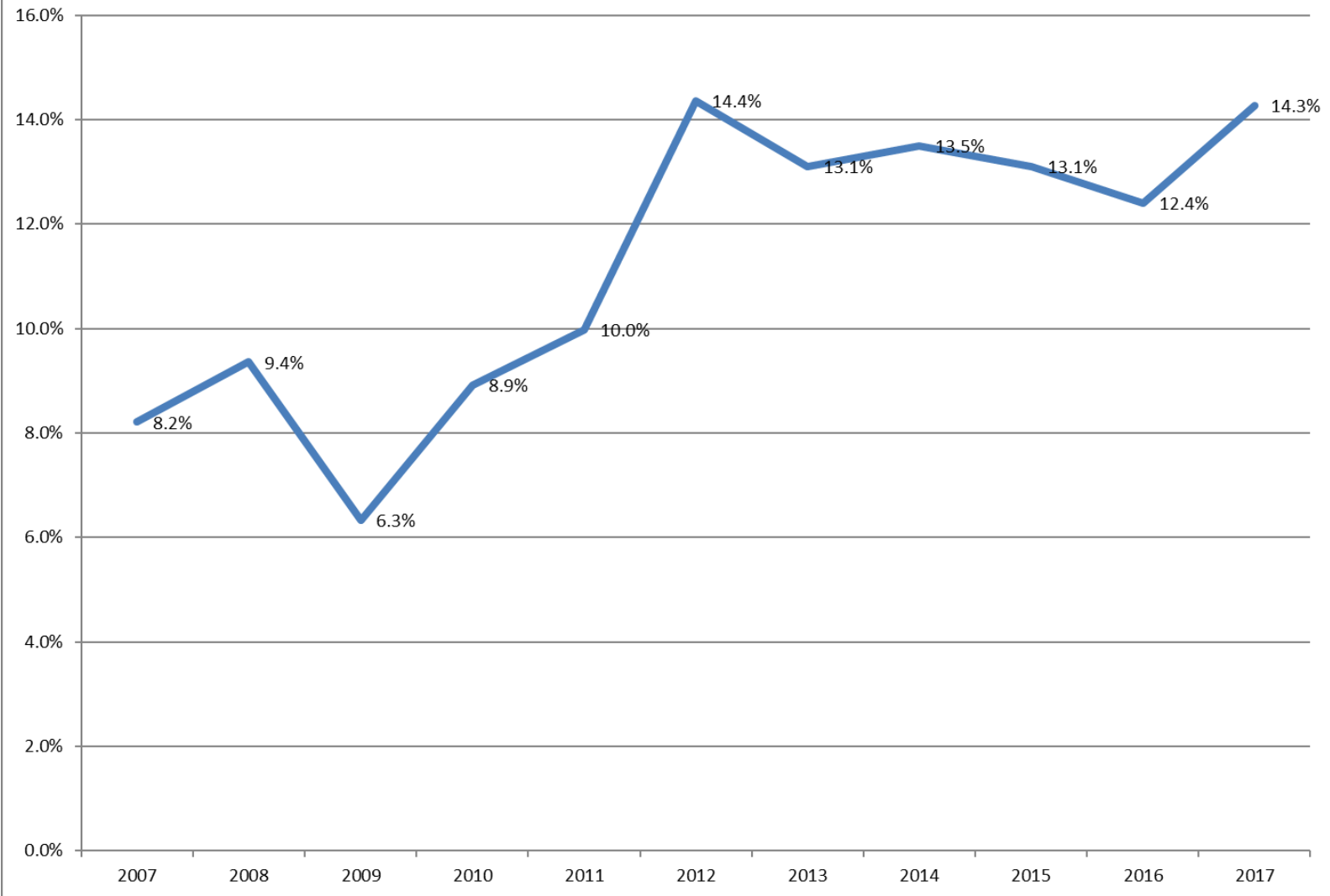


Impact of Meeting Full Need Fall 2017 First-Year

First Year Pell Eligible



Underrepresented Minority Students



The Competition – top 30 “overlap” schools for admitted applicants

U.S. Ranking	School	2016-2017	2017-2018	In-State	% Increase
2	Harvard	47074	48949		3.98%
3	Yale	49480	51400		3.88%
3	University of Chicago	52491	54825		4.45%
5	MIT	48452	49892		2.97%
8	Univ. Pennsylvania	51464	53534		4.02%
9	Duke	51265	53744		4.84%
11	Johns Hopkins	50410	52170		3.49%
11	Northwestern	50855	52678		3.58%
14	Cornell	50953	52853		3.73%
14	Brown	51367	53419		3.99%
14	Rice	43918	45608		3.85%
18	Washington Univ	49770	51533		3.54%
18	Notre Dame	49685	51505		3.66%
	Average	\$ 49,783	\$ 51,701		3.85%
	<i>Range of increases: 2.97% to 4.84%</i>				
25	Carnegie Mellon	52040	53910		3.59%
28	Michigan	43473	47476	14826	9.21%
30	NYU	49062	50464		2.86%
34	University of Rochester	50142	52020		3.75%
37	Case Western Reserve	46006	47500		3.25%
37	Boston University	50240	52082		3.67%
42	Rensselaer Polytechnic	50797	52305		2.97%
46	Lehigh	48320	50740		5.01%
52	Penn State	32382	33664	18436	3.96%
54	Ohio State University	28229	29659	10591	5.07%
	Average w/o OSU or Penn	\$ 48,760	\$ 50,812		4.21%
	CWRU relative to average	(2,754)	(3,312)		

Tuition Room and Board Rate Increases Academic Year 2018-2019

- Undergraduate tuition will increase by 3.25% to \$48,604
- Funds available for financial aid will increase proportional to the increase in tuition cost
- The tuition increase provides funds for strategic initiatives, selective new hires, salary and benefits cost increases, operating costs of new student facilities, and other ongoing cost increases including support of larger undergraduate student population
- The Residence Hall charges will increase on an average of approximately 2.95% and the board rates will increase by 3%.

Graduate & Professional Rates

- Graduate tuition will increase by 3% to \$45,168.
- MSASS will increase 2.3% to \$44,500
- Tuition for Full-Time MBA students will increase 3% to \$40,572
- Law School tuition will increase 2.77% to \$51,900
- Tuition for the DMD program at the Dental School will increase 3.86% to \$69,770
- Professional tuition at the Nursing School will increase 3% to \$49,704
- Case Medical School tuition will increase 3% to \$63,262

Tuition Rates – Academic Year 2018-2019

	FY16	FY17	FY18	FY19	% Change
Undergraduate	44,156	45,592	47,074	48,604 *	3.25%
Graduate	41,137	42,576	43,854	45,168	3.00%
MS Engineering Management	44,160	44,160	44,160	44,160	0.00%
Full-time MBA	37,500	38,250	39,390	40,572	3.00%
Master of Accountancy	43,200	44,064	38,400	39,200	2.08%
DM/PhD	50,000	50,000	50,000	50,000	0.00%
MSASS	41,550	42,570	43,500	44,500	2.30%
Law	48,600	49,500	50,500	51,900	2.77%
Dental Medicine - DMD	62,235	64,660	67,180	69,770	3.86%
Dental Medicine - Graduate	51,275	53,070	54,930	56,580	3.00%
Nursing	45,384	46,860	48,254	49,704	3.00%
Medicine	57,475	59,346	61,420	63,262	3.00%

* Published rate

Room Rates

Academic Year 2018-2019

	FY16	FY17	FY18	FY19	% change from FY18
<u>First and Second-Year Students</u>					
NRV					
Double	8,020	8,280	\$ 8,570	\$ 8,830	3.03%
Single	9,050	9,344	9,770	10,070	3.07%
SRV Suites					
Single	9,170	9,468	9,770	10,070	3.07%
Staley/Tippit House Suites					
Single	9,680	9,994	10,100	10,410	3.07%
<u>Greek</u>					
Single	9,170	9,468	9,770	10,070	3.07%
Double/Triple/Quad	8,020	8,280	8,570	8,830	3.03%
<u>Upper-Class Student Housing</u>					
Apartments-Village@115, Stephanie Tubbs Jones Hall (STJ), Property Management Apartments (PMA) and Triangle					
Triangle-1 BD double occupancy	9,900	10,226	10,290	10,650	3.50%
Triangle-2 BD double occupancy	9,900	10,226	10,290	10,650	3.50%
PMA-3 BD single occupancy	10,000	10,060	10,290	10,650	3.50%
PMA-1 bedroom	10,000	10,326	10,650	10,650	0.00%
Village@115 - 9 bedroom	10,470	10,810	11,010	11,340	3.00%
Village@115 - 6 and 7 bedroom	10,700	11,048	11,010	11,340	3.00%
STJ-4 bedroom	10,800	11,156	11,480	11,826	3.01%
STJ-2 and 3 bedroom	11,000	11,358	11,730	12,090	3.07%
Village @115-2 and 3 bedroom	11,050	11,410	11,730	12,090	3.07%
Triangle-2 BD, single occupancy	11,330	11,698	11,940	12,320	3.18%
Village@115 - 2 and 3 bedroom	11,330	11,698	11,940	12,320	3.18%
Triangle - Efficiencies (Studio/Deluxe)	11,410	11,780	12,130	12,500	3.05%
Triangle - Junior 1 bedroom	11,410	11,780	12,130	12,500	3.05%
STJ - 1 bedroom	11,410	11,780	12,130	12,500	3.05%
Village@115 - Studio	11,410	12,216	12,130	12,500	3.05%
Triangle - 1 BD, single occupancy	12,400	12,390	12,760	12,950	1.49%
STJ - 2 bedroom Townhouse	12,000	12,390	12,760	12,950	1.49%
Weighted Average Increase					2.95%

Board Rates – Academic Year 2018-2019

	FY16	FY17	FY18	FY19	% Change
<u>First-Year Meal Plans (Available to all students)</u>					
Unlimited/week + \$75 CaseCash			6,512	6,708	3.01%
17 meal swipes/week + \$150 in CaseCash	5,792	5,980	6,174	6,360	3.01%
14 Kosher meal swipes/week (No CaseCash)	5,998	6,192	6,394	6,400	0.09%
<u>Second-Year Additional Plans</u>					
14 meal swipes/week + \$200 CaseCash	5,564	5,744	5,930	6,108	3.00%
10 meal swipes/week + \$250 CaseCash	5,434	5,610	5,792	5,966	3.00%
10 Kosher meal swipes/week (No CaseCash)	5,350	5,524	5,704	5,876	3.02%
<u>Upper-Class Additional Plans</u>					
7 meal swipes/week + \$100 in CaseCash	-	-	4,280	4,408	2.99%
5 meal swipes/week + \$150 in CaseCash	-	-	3,040	3,132	3.03%

Factors Influencing Board Rate Increase

- Dining service provider, Bon Appetit, continues to face rising labor costs due to increased competition in the local labor market.
- Overall food costs increased at 2.5% rate based on CPI
- Retail upgrades planned for the coming year include renovation of Tomlinson Kitchen (back-of-house) and build-out of new retail dining concepts at the HEC
- Planning and design efforts are underway for complete renovation and upgrade of Fribley Commons dining hall
- Room rate increases are driven by inflationary pressures on operating and maintenance costs
- Developing multi-year plan for upgrade and revitalization of all First Year Experience (FYE) resident halls

Contact Information

If you have questions concerning your financial aid package:

Please contact the University Financial Aid Office at **216-368-4530** or use the “Ask the Financial Aid Counselor” link found on the University Financial Aid Web Site under “Contact Information”.

If you have any general questions regarding the tuition information presented at today’s forum:

Please contact Rick Bischoff at 368-5445 or Venus Puliafico at 368-4530