

RESEARCH MATTERS

Sparta
Research Tracking • Administration

and Conflict of Interests

During the first week of February, notifications were distributed to more than 2,500 CWRU faculty and researchers informing them that their 2014 outside interest certification forms were available for completion in our new application, SpartaCOI. Feedback from users has been positive, especially regarding the streamlining of questions for those who have no outside interests to disclose.

In addition to being a federal requirement, having a current outside interest certification on file is important for two reasons. First, all investigators and key personnel listed on any funding proposal must have a current Outside Interest Certification on file in order for the proposal to be submitted. Second, any individual who is named on an Institutional Review Board protocol needs to have a current Outside Interest Certification on file in order for the protocol to be reviewed.

The staff of the Conflict of Interests Committee is available to answer your questions. Call (216) 368-5963 for assistance.

MESSAGE FROM THE VICE PRESIDENT FOR RESEARCH

Suzanne M. Rivera, Ph.D.

I am delighted to present this edition of *Research Matters* following my first six months in the role of Vice President for Research.

In that short amount of time, I've learned a great deal about our strengths and our accomplishments.

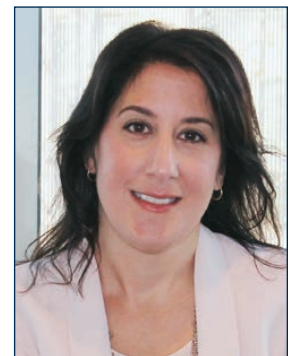
I had the pleasure of honoring five exemplary scholars with the Distinguished Faculty Research Award. You will read about each of their extraordinary contributions in the pages that follow.

I was honored to learn that, for a fourth year in a row, the Hartwell Foundation chose a CWRU researcher for its very competitive and prestigious annual award. We provide a feature on this year's recipient in this edition.

And I was overcome with pride at Research ShowCASE, our annual celebration of research, scholarship, and creative expression. In the article about ShowCASE, you'll find a URL linking to photos from this year's event.

I also have learned a lot about what more we can do to improve the support of our research community. I want to thank those who have taken the time to share your ideas and insights to date, and look forward to speaking with many more of you this year.

The offices of Research Administration and Technology Transfer exist to promote research, advance scholarship, and foster innovation. In the coming months, we will unveil a strategic plan to set goals and identify measurable objectives for improving the support and services we provide. I welcome your input and feedback as we move forward.



Suzanne M. Rivera, Ph.D.

Distinguished Faculty Research Awards

From social sciences to social work, management to medicine, and biology to biomedical engineering, research is at the heart of Case Western Reserve University.

Faculty across disciplines spur this commitment to research endeavors. To honor their work, Case Western Reserve University bestows Distinguished Faculty Research Awards to leaders in their fields. Congratulations to this year's winners.



**David
Cooperrider**

David Cooperrider, Fairmount Santrol – David L. Cooperrider Professor in Appreciative Inquiry in the Weatherhead School of Management

More than 20 years ago, Cooperrider co-created Appreciative Inquiry (AI), a strengths-based approach that focuses on what is working well for a company or organization and asks its members to analyze why those areas have been so successful. The idea is to encourage aspirational thinking, which in turn can contribute to even better results.



B. Jessie Hill

B. Jessie Hill, Professor of Law and Associate Dean for Faculty Development and Research

Hill's knowledge of constitutional law, health law and reproductive rights is so extensive that her expertise is often sought by individuals and organizations across the country and around the world. Her work is so highly regarded that she was invited to write for a nationally recognized U.S. Supreme Court blog—scotusblog.com—to which she has lent her expertise on religious clauses.



Mukesh Jain

Mukesh Jain, Ellery Sedgwick Chair and Distinguished Scientist, Professor of Medicine, and Founding Director of Case Cardiovascular Research Institute

Jain is recognized for his discovery of essential roles for Kruppel-like factors in immunity and metabolism. Kruppel-like factors are DNA-binding proteins that regulate a host of biological processes in the body, including those of the heart, blood vessels and immune cells.



**Stuart
Rowan**

Stuart Rowan, the Kent Hale Smith Professor of Macromolecular Science and Engineering

Rowan is known for his scholarly advances toward design and development of functional polymer materials, and for taking an active leadership role for a broad community of scholars. His research developments have included progress toward safer and more comfortable medical devices, such as glucose monitors and prosthetic arms.



**Elisabeth
Werner**

Elisabeth Werner, Professor in the Department of Mathematics, Applied Mathematics and Statistics

Werner's research in convex geometry, analysis and probability—and its application to approximation theory, mathematical physics and quantum information theory—has established her as a leader in the field of mathematics. Her research has far-reaching applications, including facial recognition technology, computer programs, statistics and probability.

Research ShowCASE Wrap Up

On Friday, April 17, 2015, CWRU hosted nearly 450 researchers at Research ShowCASE 2015 and Spring Intersections. "Discovery, Collaboration and Community" was the theme.

Visitors were able to see the breadth of research being done by CWRU faculty, staff and students – including graduate students, undergraduates and high school students. Some of the highlights included a 2-foot-tall robotic penguin that serves as a mechanical caregiver for the elderly, a project that explores the kinetic relationship between dancers and their environment of light and color using iPhones, and a patient demonstration of how technology developed at the Cleveland Functional Electrical Stimulation (FES) Center allowed him to regain grip strength.

New this year was a mobile app that allowed visitors to search topics of interest and find posters about that topic. Attendees could also take a pre-defined "Journey" to explore Big Data posters, Research about Cleveland, Global Health, and more.

Even though the one-day event is over for 2015, you can still explore the research. View pictures from the event at <https://research.case.edu/ShowCASE/> or go to Guidebook.com/g/ShowCASE from your iOS or Android device to download the app.

Brian Cobb, Ph.D. Selected for Award by Hartwell Foundation

For the fourth year in a row, the Hartwell Foundation has selected a CWRU researcher for its highly selective and prestigious Individual Biomedical Research Award. This award, given to only 12 researchers in the U.S. annually, supports early-stage biomedical research for the benefit of children.

Associate Professor Brian Cobb of the Pathology Department in the School of Medicine was selected following a rigorous, multi-stage competition. The award provides \$300,000 over a three-year period in support of his research project, "Harnessing Lymphocyte Cooperativity for the Treatment and Prevention of Asthma."

The CWRU Innovation Prize Fund

Lubrizol, The Sherwin-Williams Company, Johnson & Johnson, and most recently Nottingham Spirk, have all successfully engaged with the university through a novel approach called the CWRU Innovation Prize Fund. This collaboration tool between industry and academia is designed to be a catalyst for developing technology to solve some of the most pressing needs in society today.

The Innovation Prize Fund supports an interdisciplinary approach and provides the university's partners broader access to a wide range of faculty. It is modeled after the Coulter-Case Translational Research Partnership (CCTRP) process that has been instrumental within the biomedical engineering department at Case Western Reserve in promoting translational research on campus.

How it works: The company identifies several areas of potential interest. Based on this information, the university issues a Request for Proposals (RFP) to faculty. Faculty members from all disciplines are encouraged to apply.

The company will review the proposals and fund two to three projects, on average. In working with these four companies, roughly 120 proposals have been received from faculty across five different schools, with \$700,000 going to support the winners. The Office of Corporate Relations continues to seek new partnerships with companies through the CWRU Innovation Prize Fund.



Dr. Cobb is the fifth Hartwell Award recipient at CWRU in four years. Previous winners are: Dr. Jennell Vick (CAS), Dr. Jonathon Sears (SOM), Dr. Saptarsi Haldar (SOM), and Dr. Roberto Fernandez-Galan (SOM).

For More Information **CONTACT**

AREA	NAME	EMAIL	PHONE
CWRU RESEARCH ADMINISTRATION			
Sponsored Projects (pre-award)	Jessica Johanan	resadm@cwru.edu	216.368.2504
Sponsored Projects (post-award)	Erica Dempster	spadocs@cwru.edu	216.368.4280
Sponsored Projects (effort reporting)	Monica Bradley	mbb9@case.edu	216.368.5945
SCHOOL OF MEDICINE RESEARCH ADMINISTRATION			
Pre-award Grants	Robin Bissell	medres@case.edu	216.368.4432
Pre-award Contracts	Judy McBride	medresindustry@case.edu	216.368.4432
Research Compliance	Matthew DeVries	mpd35@case.edu	216.368.1266
UNIVERSITY RESEARCH COMPLIANCE PROGRAMS			
Animal Research Committee (IACUC)	Diana Zyzanski	djp@case.edu	216.368.3815
Biosafety Committee (IBC)	JC Scharf-Deering	jcs12@case.edu	216.368.4513
Conflict of Interest Committee (COI)	Yovonda Rease	yxr13@case.edu	216.368.5963
Export Controls	Lisa Palazzo	lxp66@case.edu	216.368.5791
Research Compliance Officer	Kim Volarcik	kav6@case.edu	216.368.0134
Research Integrity	Tracy Wilson-Holden	tjw18@case.edu	216.368.6131
Human Stem Cell Committee (HSCRO)	JC Scharf-Deering	jcs12@case.edu	216.368.4513
University Compliance	Boyd Kumher	bsk7@case.edu	216.368.0833
HUMAN SUBJECTS RESEARCH (IRBS)			
Cleveland Clinic IRB	Deb McCleave	IRB@ccf.org	216.444.2924
MetroHealth Medical Center IRB	Carey Gorden	cgorden@metrohealth.org	216.778.2021
Social Behavioral IRB	Gabrielle Nickel	gcn4@case.edu	216.368.6925
University Hospitals IRB	Carol Fedor	carol.fedor@uhhospitals.org	216.844.1529
Veterans' Affairs IRB	Jennifer Livingston	jennifer.livingston@va.gov	216.791.3800 x4658
OTHER RESEARCH SUPPORT PROGRAMS			
Animal Resource Center (ARC)	Tami McCourt	txm9@case.edu	216.368.4972
Chief Information Security Officer	Tom Siu	tjs39@case.edu	216.368.6959
Corporate Relations	Anne Borchert	amb14@case.edu	216.368.0242
Environmental Health & Safety (EHS)	Marc Rubin	mdr6@case.edu	216.368.1518
Government & Foundation Relations	Julie Rehm	jmr193@case.edu	216.368.6070
Human Subjects Education/Training	Gabrielle Nickel	gcn4@case.edu	216.368.6925
Information Technology Support (ITS)	Jeff Simpkins	jds41@case.edu	216.368.5316
Technology Transfer Office (TTO)	Erica Paythress	exp164@case.edu	216.368.4439

SIGN UP for Research Listservs

The Office of Research Administration now provides two weekly e-newsletters.

One, issued on Fridays, details research funding opportunities. The other, sent on Tuesdays, provides other news regarding research, such as updates to policies or new programs offered on campus.

If you would like to join one or both listservs, please visit: ora.ra.cwru.edu/spiderweb/oraSubscriptions.cfm.

The respective titles of the emails are: **Research Funding Opportunities** and **CWRU Research—News and Updates**.

