

<http://thedaily.case.edu>

Alevca Ocular gains CWRU Technology Transfer licenses to develop and commercialize novel ophthalmological drugs

JANUARY 5, 2018 ✕ [FEATURED \(HTTP://THEDAILY.CASE.EDU/CATEGORY/FEATURES/FEATURED/\)](http://thedaily.case.edu/category/features/featured/) ✕ [HEALTH & WELLNESS \(HTTP://THEDAILY.CASE.EDU/CATEGORY/RESEARCH/HEALTH-WELLNESS/\)](http://thedaily.case.edu/category/research/health-wellness/) ✕ [UNIVERSITY NEWS \(HTTP://THEDAILY.CASE.EDU/CATEGORY/UNIVERSITY-NEWS/\)](http://thedaily.case.edu/category/university-news/)

Getty Images

Alevca Ocular LLC has secured licenses from [Case Western Reserve University's Technology Transfer Office \(TTO\)](http://case.edu/research/faculty-staff/tto/) to exclusively use university-funded research to develop and commercialize novel ophthalmological drugs.

Alevca Ocular, an early-stage company based in San Clemente, California, has licensed four drug technologies from Case Western Reserve, each focused on treating eye infection and irritation.

In 2005-06, [fungal keratitis \(https://www.aao.org/eye-health/diseases/what-is-fungal-keratitis\)](https://www.aao.org/eye-health/diseases/what-is-fungal-keratitis) (inflammation of the cornea) caused by a contaminated contact lens solution resulted in a worldwide outbreak. About a third of Americans who contracted the disease required a corneal transplant. Today, treatment for eye infections in some contexts—including some surgeries and as part of some diseases—remains a clinical need.

“Our initial push,” Alevca Chief Executive Officer Chris Magill said, “will be on drugs targeting inflammation from cataract, LASIK and other eye surgeries, as well as from microbial causes.”

[Eric Pearlman \(http://www.immunology.uci.edu/profiles/pearlman-eric.asp\)](http://www.immunology.uci.edu/profiles/pearlman-eric.asp), former professor and director of research in Case Western Reserve's Department of Ophthalmology and Visual Sciences from 1994-2014, developed and continues to direct the technologies.

During that time, Case Western Reserve's TTO has guided Pearlman through development and legal protections to help advance the technologies.

“I have been working with Dr. Pearlman for nearly a decade,” said Michael Haag, TTO's executive director of technology management. “I am gratified that his technology has the opportunity to benefit patients, and I am excited that Alevca, along with Dr. Pearlman himself, is primed to take this technology into the clinic.”

Now a professor and director of the Institute for Immunology at the University of California, Irvine, Pearlman's research focuses on treating parasitic, fungal and bacterial infections. His work mainly involves corneal infections, such as fungal and bacterial keratitis, but also includes systemic disease.

Alevca, which has assembled a seasoned team of business and scientific experts including Pearlman, is preparing to complete financial and regulatory steps to bring Pearlman's technology to clinical trials as soon as possible.

Alevca was invited to the prestigious J.P. Morgan Healthcare Conference in San Francisco on Jan. 8-11, a conference designed to connect early stage companies with investment opportunities. Alevca is seeking Series A funding.

"The Case Western Reserve licenses are essential components of Alevca's development plan, and we appreciate the support the university's Tech Transfer Office has provided and continues to provide as we grow our organization," Magill said. "We aim to partner with big pharma to help accelerate programs and bring the drugs to market."

For more information, contact Bill Lubinger at william.lubinger@case.edu (<mailto:william.lubinger@case.edu>).

This article was originally published Jan. 3, 2018.

[ALVECA OCULAR LLC \(HTTP://THEDAILY.CASE.EDU/TAG/ALVECA-OCULAR-LLC/\)](http://thedaily.case.edu/tag/alveca-ocular-llc/)

[OPHTHALMOLOGY \(HTTP://THEDAILY.CASE.EDU/TAG/OPHTHALMOLOGY/\)](http://thedaily.case.edu/tag/opthalmology/)

[RELEASE \(HTTP://THEDAILY.CASE.EDU/TAG/RELEASE/\)](http://thedaily.case.edu/tag/release/)

[TECHNOLOGY TRANSFER OFFICE \(HTTP://THEDAILY.CASE.EDU/TAG/TECHNOLOGY-TRANSFER-OFFICE/\)](http://thedaily.case.edu/tag/technology-transfer-office/)



(<https://www.facebook.com/sharer/sharer.php?u=http://thecase.edu/alevca-ocular-gains-cwru-technology-transfer-licenses-develop-commercialize-novel-opthalmological-drugs/>)

[U=HTTP://THE DAILY CASE.EDU/ALEVCA-OCULAR-GAINS-CWRU-TECHNOLOGY-TRANSFER-LICENSES-DEVELOP-COMMERCIALIZE-NOVEL-OPHTHALMOLOGICAL-DRUGS/\)](http://thecase.edu/alevca-ocular-gains-cwru-technology-transfer-licenses-develop-commercialize-novel-opthalmological-drugs/)

[OCULAR-GAINS-](#)

[CWRU-](#)

[TECHNOLOGY-](#)

[TRANSFER-](#)

[LICENSES-](#)

[DEVELOP-](#)

[COMMERCIALIZE-](#)

[NOVEL-](#)

[OPHTHALMOLOGICAL-](#)

[DRUGS/\)](#)

[OCULAR-GAINS-](#)

[CWRU-](#)

[TECHNOLOGY-](#)

[TRANSFER-](#)

[LICENSES-](#)

[DEVELOP-](#)

[COMMERCIALIZE-](#)

[NOVEL-](#)

[OPHTHALMOLOGICAL-](#)

[DRUGS/\)](#)

[OCULAR-GAINS-](#)

[CWRU-](#)

[TECHNOLOGY-](#)

[TRANSFER-](#)

[LICENSES-](#)

[DEVELOP-](#)

[COMMERCIALIZE-](#)

[NOVEL-](#)

[OPHTHALMOLOGICAL-](#)

[DRUGS/\)](#)

[OCULAR-GAINS-](#)

[CWRU-](#)

[TECHNOLOGY-](#)

[TRANSFER-](#)

[LICENSES-](#)

[DEVELOP-](#)

[COMMERCIALIZE-](#)

[NOVEL-](#)

[OPHTHALMOLOGICAL-](#)

[DRUGS/\)](#)

RELATED POSTS



<http://thedaily.case.edu/computer-program-finds-new-uses-old-drugs/>

Computer program finds new uses for old drugs (<http://thedaily.case.edu/computer-program-finds-new-uses-old-drugs/>)

JANUARY 10, 2018



The presence of sexual violence in neighborhoods erodes feelings of safety for women—but not men (<http://thedaily.case.edu/presence-sexual-violence-neighborhoods-erodes-feelings-safety-women-not-men/>)

JANUARY 9, 2018

♥ Recommend

🔗 Share

Sort by Best ▾



Start the discussion...

LOG IN WITH

OR SIGN UP WITH DISQUS ?

Name

Be the first to comment.

ALSO ON CASE WESTERN RESERVE UNIVERSITY

Employees to get two additional days off the week of Dec. 25

4 comments • 2 months ago

Leslie Clarke — That is pretty amazing! Thank you so very much <3

Marking its 30th year, the 2017 Weatherhead 100 recognizes Northeast Ohio's ...

1 comment • a month ago

adrian lucano — very wonderful

Dental staff member Kathy Koehler passes away

1 comment • 5 months ago

Sarah Baranowski — It is always very unfortunate when such people leave us ... Thank you for publishing an article about her and about her life, ...

Alumnus Richard H. Thaler earns Nobel Prize for work in behavioral economics

1 comment • 3 months ago

Xun Nie — impressive!

✉ Subscribe Add Disqus to your siteAdd DisqusAdd Privacy

ARCHIVES

Select Month



RECENTLY FEATURED



Teaching in Ethiopia, Bilimoria prepares future female UN peacekeepers with lessons in leadership (<http://thedaily.case.edu/teaching-ethiopia-bilimoria-prepares-future-female-un-peacekeepers-lessons-leadership/>)

JANUARY 8, 2018



5 questions with... biomedical engineer Pallavi Tiwari (<http://thedaily.case.edu/5-questions-biomedical-engineer-pallavi-tiwari/>)

JANUARY 5, 2018

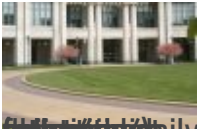
[\(/category/featured/\)](#)

[View all Recently Featured](#)

UPCOMING EVENTS



Sustained Dialogue Moderator Training (<http://thedaily.case.edu/sustained-dialogue-moderator-training/>)



"En Plein Air Paintings from CWRU Squire Valleevue and Valley Ridge Farms" meet-the-artist reception (<http://thedaily.case.edu/en-plein-air-paintings-cwru-squire-valleevue-valley-ridge-farms-meet-artist-reception/>)

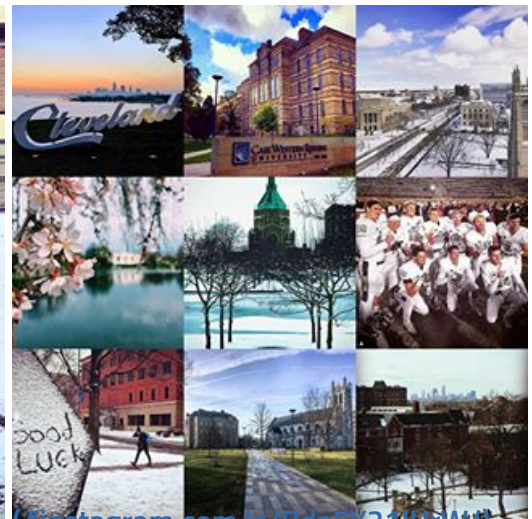


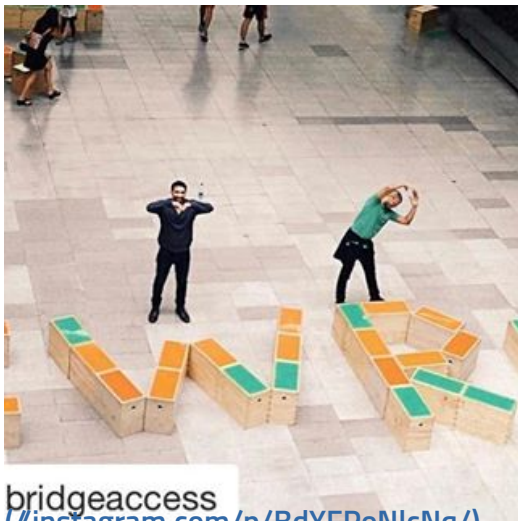
PRCHN Seminar Series: "Patterns of use and beliefs among adolescents and young adults who smoke cigarillos" (<http://thedaily.case.edu/prchn-seminar-series-patterns-use-beliefs-among-adolescents-young-adults-smoke-cigarillos/>)

[\(/events\)](#)

[View all Events](#)

LIFE @CWRU





CASE WESTERN RESERVE UNIVERSITY EST. 1826

think beyond the possible™

© 2017 Case Western Reserve University (<http://case.edu>)

10900 Euclid Ave.

Cleveland, Ohio 44106

[216.368.2000 \(tel:216-368-2000\)](tel:216-368-2000) ([legal notice \(http://www.case.edu/legal.html\)](http://www.case.edu/legal.html))

SUBMIT TO THE DAILY

Submit an Article

[\(/about/submit-to-the-daily/\)](/about/submit-to-the-daily/)

Editorial Guidelines

[\(/about/editorial-guidelines/\)](/about/editorial-guidelines/)

SUBSCRIBE

Email Address

Subscribe

FOLLOW US



<https://www.facebook.com/casewesternreserve/> <https://twitter.com/cwrucw/> <https://www.instagram.com/cwrucw/> <https://www.youtube.com/user/case/>