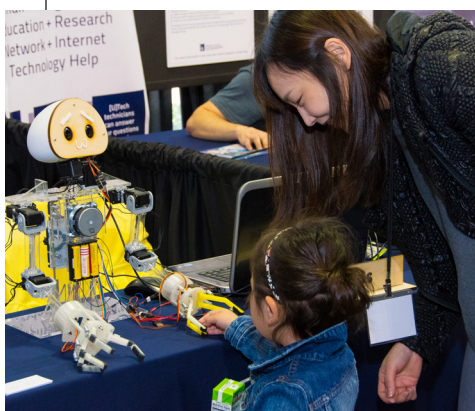


RESEARCH MATTERS



Research
ShowCASE 2017:
**largest
presentation of
university-based
research yet**



More than 1,100 students, faculty and staff demonstrated their research

Research ShowCASE 2017 was held Friday, April 21. The event offered more than 600 presentations from high school students, CWRU undergraduates, graduate students, post-docs, faculty members and staff, representing virtually every academic discipline and specialty.

From biologically-inspired robots to guitar-playing apps, the depth and breadth of research, scholarship and creative endeavors being stimulated at Case Western Reserve University were on full display in one location.

The event featured keynote speaker Adam Marcus, co-founder of Retraction Watch and The Center for Scientific Integrity. His message was an important one: How society will benefit from greater transparency in science and truth in reporting research results.

Among the interactive and visual highlights were the Cleveland FES (Functional Electrical Stimulation) Center, many biologically inspired robots, CWRU student entrepreneurs and their technology, and HoloAnatomy.

Missed the event? Watch videos of some of the exciting research on the Research ShowCASE YouTube Channel:

youtube.com/playlist?list=PLBELrG1nZ2U6W4sRS574qSTWqugOK9M_N.

Distinguished Faculty Research Awards

From social sciences to social work, management to medicine, and biology to biomedical engineering, research is at the heart of Case Western Reserve University.

To honor their work, Case Western Reserve University bestows Distinguished Faculty Research Awards to leaders in their fields. Congratulations to this year's winners.



**Fabio
Cominelli**

Fabio Cominelli, The Hermann Menges M.D. Professor of Internal Medicine

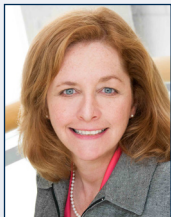
Cominelli, an internationally known expert in inflammatory bowel disease, has led and contributed to several multi-million-dollar research studies that have advanced the understanding of Crohn's disease, general gastroenterology, inflammatory bowel disease and ulcerative colitis.



**Mark
Griswold**

Mark Griswold, Professor, Department of Radiology

Griswold is the director of Case Western Reserve University's Interactive Commons, which features the Microsoft Hololens and many other collaborative projects. He has partnered with researchers across the university on various projects—from using MRI to advance discoveries in multiple sclerosis to developing a robotically guided heart catheter.



Ruth A. Keri

Ruth A. Keri, The Arline H. and Curtis F. Garvin MD and Constance C. Frackelton Professor in Cancer Research

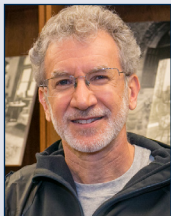
Keri is associate director for basic research at Case Comprehensive Cancer Center and vice chair of the Department of Pharmacology. Her lab focuses on finding new cancer therapies, studying the different paths cancer cells take and then finding ways to disrupt those paths.



Scott Shane

Scott Shane, The A. Malachi Mixon III Professor of Entrepreneurial Studies and Professor of Economics

Shane's influence on entrepreneurial research is widely recognized in the industry. He has focused on technology entrepreneurship, new firm formation, economic development and new venture finance. In addition, he has conducted entrepreneurship education experiments to determine the best approach to teach entrepreneurs how to effectively deliver a pitch.



**Ted
Steinberg**

Ted Steinberg, the Adeline Barry Davee Distinguished Professor of History and Professor of Law

For more than 25 years as a U.S. historian, Steinberg's work has focused on the intersection of environmental, social and legal history. His six books range in topics from natural disasters to the American desire for the perfect lawn. His work has been widely regarded, having garnered two Pulitzer Prize nominations: in history for *Down to Earth* and in general non-fiction for *Acts of God*.

CWRU Receives \$500,000 State Grant for Technology Start Up Fund

The Ohio Third Frontier Commission has awarded CWRU a \$500,000 grant for a campus-based start-up translational research fund to help faculty researchers advance and commercialize their innovations.

The CWRU *Technology and Validation Start-Up Fund* Program (CTP) is managed by the CWRU Technology Transfer Office and aims to accelerate the translation of promising technologies into the marketplace through Ohio-based companies, with the eventual goal of creating greater economic growth. Three rounds of funding are expected in 2017 to support 10-12 projects.

The CTP is intended to be the final bridge between a translational research project and a viable commercial program. Funding will support technologies that require validation and proof that will directly impact and enhance commercial viability and the ability to support a start-up company.

For more information, contact the CTP Director, Stephanie Weidenbecher at saw43@case.edu or 216.368.6191.



think[box]: Need Help Turning Your 'Great Idea' Into Reality?

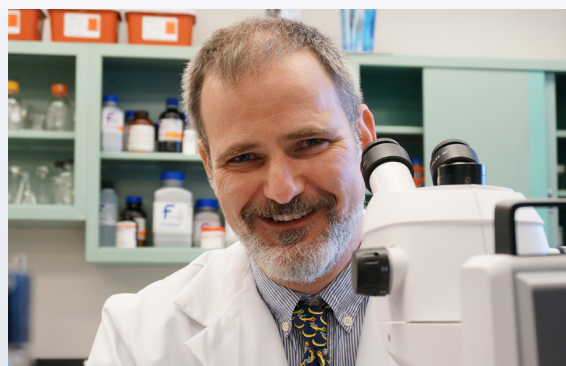
Have you ever thought "I've got the greatest idea, I just don't know how to develop it?" If so, you are not alone and there is help.

Last fall, Sears think[box] launched the "How to think[box]" series of free classes and workshops. The program is for DIYers, hobbyists, artists, makers, entrepreneurs and innovators —no matter your skill-level, all are welcome to attend. And, keeping with the spirit of openness and collaboration on which TBX is based, all sessions are open to the community.

Class include topics such as 'How to' use the embroidery machine, laser cutter and 3-D printers, to innovation themes such as 'understanding human-centered design,' 'campus resources for innovation,' and 'how to manage group dynamics'.

For a full list of offerings, please visit:
thinkbox.case.edu/happenings/howtothinkbox

Martin Basch Recipient of Individual Biomedical Research Award



For the sixth year in a row, The Hartwell Foundation has selected a CWRU researcher for its highly selective and prestigious Individual Biomedical Research Award.

This year, Martin Basch, assistant professor of otolaryngology, head and neck surgery, was named a recipient. The award, which provides \$300,000 in direct costs for three years, is being given to 12 recipients from

10 institutions nationally. The Hartwell Foundation is a Memphis-based philanthropic institution that funds innovative biomedical research to benefit children of the United States.

With the grant, Basch will focus on developing a therapeutic approach for restoring hearing using a model of congenital strial deafness. Normal hearing requires the proper development of the cochlea, the hearing portion of the inner ear. The cochlea includes the auditory organ that contains the sensory hair cells responsible for sound detection and the stria vascularis, the "battery" that provides the energy for auditory hair cells to function.

In addition to the Individual Biomedical Research Award, Case Western Reserve qualified for a fellowship of \$100,000 to support a postdoctoral candidate for two years. CWRU will select its recipient later this spring.

For More Information **CONTACT**

AREA	NAME	EMAIL	PHONE
CWRU RESEARCH ADMINISTRATION			
Sponsored Projects (pre-award)	Debra Bush	resadm@case.edu	216.368.6265
Sponsored Projects (post-award)	Robin Trail	spadocs@case.edu	216.368.4516
Sponsored Projects (effort reporting)	Monica Bradley	mbb9@case.edu	216.368.5945
SCHOOL OF MEDICINE RESEARCH ADMINISTRATION			
Pre-award Grants	Robin Bissell	medres@case.edu	216.368.4432
Pre-award Contracts	Judy McBride	medresindustry@case.edu	216.368.4432
Research Compliance	Matthew DeVries	mpd35@case.edu	216.368.1266
UNIVERSITY RESEARCH COMPLIANCE PROGRAMS			
Animal Research Committee (IACUC)	Andreja Romanchik	axr130@case.edu	216.368.3815
Biosafety Committee (IBC)	Colleen Karlo	jck2@case.edu	216.368.0838
Conflict of Interest Committee (COI)	Yovonda Rease	yxr13@case.edu	216.368.5963
Export Controls	Lisa Palazzo	lxp66@case.edu	216.368.5791
Research Compliance Officer	Kim Volarcik	kav6@case.edu	216.368.0134
Research Integrity	Tracy Wilson-Holden	tjw18@case.edu	216.368.6131
Human Stem Cell Committee (HSCRO)	Colleen Karlo	jck2@case.edu	216.368.0838
University Compliance	Lisa Palazzo	lxp66@case.edu	216.368.5791
HUMAN SUBJECTS RESEARCH (IRBS)			
Cleveland Clinic IRB	Deb McCleave	IRB@ccf.org	216.444.2924
MetroHealth Medical Center IRB	Carey Gorden	cgorden@metrohealth.org	216.778.2021
CWRU IRB	Sue Ambro	sxa463@case.edu	216.368.4514
University Hospitals IRB	Beth Hagesfeld	elizabeth.hagesfeld@uhhospitals.org	216.844.7388
Veterans' Affairs IRB	Jennifer Livingston	jennifer.livingston@va.gov	216.791.3800 x4658
OTHER RESEARCH SUPPORT PROGRAMS			
Animal Resource Center (ARC)	Tami McCourt	txm9@case.edu	216.368.4972
Chief Information Security Officer	Tom Siu	tjs39@case.edu	216.368.6959
Corporate Relations	Anne Borchert	amb14@case.edu	216.368.0242
Environmental Health & Safety (EHS)	Marc Rubin	mdr6@case.edu	216.368.1518
Government & Foundation Relations	Julie Rehm	jmr193@case.edu	216.368.6070
Human Subjects Education/Training	Laura Mekhail	ljb17@case.edu	216.368.6925
ORA Information Systems	Steve Reinhardt	sparta@case.edu	216.368.0404
Technology Transfer Office (TTO)	Daniel Pendergast	djp8@case.edu	216.368.0184
Undergraduate Research (SOURCE)	Sheila Pedigo	sdp5@case.edu	216.368.8508

The Office of Research Administration provides two weekly e-newsletters; one details funding opportunities and the other provides news and updates regarding research. Join the lists at research.case.edu/spiderweb/oraSubscriptions.cfm.

To speak with someone to obtain information, offer input, or discuss problems, questions, or concerns about participation in a research study, please contact the local Institutional Review Board (IRB) or Research Compliance Officer listed above.

Visit us on the web at: case.edu/research.