

INSIDE THIS ISSUE

Students on the Road
Reporting back from DC
and Chicago

**Grants and Awards
Announced**
SCCS Faculty Associates
are recognized for
innovative research

**More Schubert Center
Collaborations and
Activities**
New blog, community
forum, ShowCASE '09
and Case Conversations
Seminar Series

And more...



Schubert Center Hosts National Conference on Adolescence

On November 7-8, 2008, the Schubert Center held a national conference titled "New Directions in Policy-Relevant Research on Adolescence: Perspectives from Psychological Anthropology." The conference was made possible through the generous support of the Lemelson/Society for Psychological Anthropology Conference Fund. The conference proposal, submitted by Eileen Anderson-Fye, Schubert Center associate director, and Jill Korbin, director of the Schubert Center, was one of only three funded in the first national competition for this prestigious award. The Department of Anthropology and the Childhood Studies Program were co-sponsors of the conference.

The conference brought together nationally and internationally known experts in human development and child and adolescent well-being, including researchers from our own campus, as well as child policy experts on the national, state

and local levels. Conference Participants were joined by Case Western Reserve faculty, staff and students, and members of the Greater Cleveland community. In keeping with the mission of the Schubert Center, these various constituencies discussed cutting-edge work on adolescence and exchanged ideas about the integration of research, practice, and policy.

In his welcoming remarks, Provost William A. "Bud" Baeslack, III highlighted the Schubert Center's role in bringing together researchers and professionals from across the campus and the community. Jill Korbin and Eileen Anderson-Fye spoke about the conference goals. The first panel, moderated by Eileen Anderson-Fye, featured three prominent psychological anthropologists: Thomas S. Weisner (UCLA), Carol Worthman (Emory), and Robert A. LeVine (Harvard).

CONTINUED ON PAGE 7 >





2008 SPRING TRIPS TO WASHINGTON D.C. AND CHICAGO 1 PARTICIPATING IN THE D.C. TRIP, (LEFT TO RIGHT) JESSICA MCRITCHIE, EMMA ADEBAYO, MOLLY IRWIN, CAROLINE SONNEFELD, OHIO SENATOR SHERROD BROWN, KOLIE EROKWU, GAYLE CHANNING TENENBAUM AND EMMA ADEBAYO.

2 CWRU STUDENTS AT THE SOCIETY FOR RESEARCH ON ADOLESCENCE CONFERENCE IN CHICAGO. SEE FULL LIST OF PARTICIPATING STUDENTS BELOW.

Students Expand Minds, Horizons

Thanks to the generosity of the Mann Endowment, students enrolled in classes focused on child issues can experience child research and policy firsthand by attending academic conferences, traveling to see child policy in action, and obtaining Mann Child Policy Externships. This spring, students taking CHST 302, "Experiential Learning in Child Policy," traveled to Washington, while students enrolled in PSCL 230, "Child Psychology," attended the meeting of the Society for Research on Child Development in Denver, Colorado. Below, we highlight 2008's successful trips.

CHICAGO Students from two courses cross-listed with Childhood Studies traveled to Chicago for the 2008 Meeting of the Society for Research on Adolescence (SRA). This experiential learning opportunity was organized by the Schubert Center's associate directors, Elizabeth Short (who teaches PSCL 329, "Adolescence") and Eileen Anderson-Fye (who teaches ANTH 313, "Anthropology of Adolescence"). Schubert Center graduate assistant Meghan Halley assisted in organizing the trip.

WASHINGTON D.C. Students visited the offices of several of Ohio's congressional representatives, attended hearings and met with staff at policy, research and advocacy organizations. They were accompanied by Molly Irwin and Jessica McRitchie. Gayle Channing Tenenbaum, a respected child advocate and consultant to the Center, was also able to join the students and share her expertise.

Thirteen students from the two classes participated: Mallory Zehe, Megan Carl, Summer Wiggins, Alex Cooke, Elle Brennan, Meghan McNally, Arlene Wanderi, Marian Armstrong, Justin Ellis, Emily Mayer, Leah Dennis, Preethy Rangan and Nidhi Maley. They attended sessions and considered how the research presented at the meeting could be applied to policy.

"Our trip to Chicago for the SRA conference was inspiring," said Mallory Zehe, a student in Dr. Short's class. "We saw and heard so many different avenues of adolescent research. I hope to present my own work there one day!"

Students who participated in the Society for Research on Adolescence conference, the D.C. trip, and the Mann Child Policy Externships are supported by the generosity of the Mann Endowment.

Externships approved as Capstone

The College of Arts and Sciences has approved the prestigious Mann Child Policy Externships, offered by the Schubert Center and the Childhood Studies Program, as an undergraduate Capstone experience. The externships reflect the Center's belief that exposure to linking research and policy is an important component of the undergraduate experience. For more information on the Mann Child Policy Externships, contact us by phone at 216.368.0540, email schubertcenter@case.edu, or visit us online at www.case.edu/artsci/schubert/.



Brisky Fellowship Recipient Studies the Emergence of Anxiety and Depression in Girls

The Brisky Fellowship, supported by the Cora Unger Brisky Endowment, is awarded by the Schubert Center to graduate students who are completing dissertation research on important child issues. Jeanne Duax, an advanced graduate student in the Psychology Department, is the 2008-2009 recipient of the Brisky Fellowship.

Ms. Duax's research and clinical interests include girls' and women's mental health, developmental precursors to anxiety and depression, peer relationships, and psychotherapy research. Her dissertation, *Internalizing Symptoms, Self-Perceptions, and Domain-Specific Competencies in Girls Attending a Single-Sex Middle School*, examined the roles that self-concept and self-esteem variables play in the emergence of anxiety and depressive symptoms in girls during adolescence. Ms. Duax's future career goals include working in a clinical/medical setting where she can be involved in therapy, research and teaching.



Schubert Center Associate Director Receives Award for Contribution to the Study of Attention Disorders

Elizabeth Short has received the 2007 Keith Conners Award for Scholarly Contribution. This award, which recognizes an important paper published in the *Journal of Attention Disorders*, is sponsored by Dr. Keith Conners and the Multi-Health System. This year, Dr. Short and her colleagues, Lynn Fairchild, Robert Findling and Michael Manos, were honored for their article "Developmental and Subtype Differences in Behavioral Assets and Problems in Children Diagnosed with ADHD."

Dr. Short's research on children with attention deficit/hyperactivity disorder (ADHD) is unique in its focus on children's assets. Earlier research has shown that ADHD—the most common behavioral disorder in children—poses academic, behavioral and social challenges that can lead to negative developmental outcomes. In their study, Dr. Short and her colleagues explored the important question of why some children with ADHD are successful while others are not. They concluded that some children possess behavioral assets that may protect them against problems that inhibit school and social success.

These findings have important implications for the assessment and management of ADHD in the clinical setting. Dr. Short and her colleagues recommend that clinicians assess behavioral assets that may assist children in navigating the challenges of ADHD. Comprehensive assessments that focus on both strengths and weaknesses of children with ADHD have the potential to optimize their academic and social success.



GRANT SUPPORTS MENTAL HEALTH SERVICES FOR TRAUMATIZED CHILDREN IN CUYAHOGA COUNTY

James Spilsbury, Schubert Center faculty associate and investigator at the Center for Clinical Investigation in the Case Western Reserve University School of Medicine, is part of a team that has been awarded a \$1.6 million grant to assist traumatized children and youth in Cuyahoga County. The grant was awarded to Mental Health Services for Homeless Persons, Inc. (MHS), a local nonprofit that provides mental health and supportive services to vulnerable populations.

Dr. Spilsbury was involved in writing the winning grant application and will conduct future research and evaluation.

The project, *Transforming Care for Traumatized Youth in Child Welfare*, will create a partnership between MHS and the Cuyahoga County Department of Children and Family Services (DCFS). Its goal is to identify children in the child welfare system with post-traumatic stress disorder and to provide them with appropriate counseling. In addition, the project will train DCFS workers so that they can incorporate informed practices into their work. Ultimately, the goal is to develop a screening and referral mechanism to ensure that traumatized children receive needed services.

Dr. Spilsbury notes that while some children are resilient and able to recover from traumatic events, others may suffer significant developmental effects. Trauma can impair a child's cognition, emotional stability and regulation of conduct. As a result, it may have a lasting impact on academic achievement and social relationships. Ensuring that traumatized children receive appropriate and effective treatment is one way to minimize the long-term effects of trauma.

This project represents an important local initiative to address these issues. It has been funded by the National Child Traumatic Stress Network and the Substance Abuse and Mental Health Service Administration (SAMHSA).



Jerry Floersch and Eileen Anderson-Fye Awarded Presidential Research Initiative Funds to Support Work on College Students' Management of Mental Illness

Faculty Associate Jerry Floersch (MSASS) and Eileen Anderson-Fye, in collaboration with Jes Sellers, director of the University Counseling Center, were awarded a two-year, \$75,000 Presidential Research Initiative Award. The award supports their study, "College Student Experience of Mental Health Service Use and Psychiatric Medication," which aims to understand how college students experience and manage mental illness.

With research indicating that the number of college students taking psychiatric medications has increased, researchers and service providers are interested in investigating how young adults manage their medications and mental health care while on campus and away from the supervision of family and hometown health care providers. This study will be one of the first to investigate how students with mental illness adjust to campus life and increased responsibility for their own care. The researchers will conduct a quantitative survey with 120 undergraduates to understand their experiences of psychiatric medication and services. From this larger sample, they will conduct qualitative interviews with 30 undergraduates who will then be followed for two years to track their experiences with faculty, students, and mental health providers on campus. Finally, the researchers will interview faculty and staff to understand how students disclose that they have a mental illness and how faculty members and staff respond.

The current study builds on Floersch's previous work, funded by the National Institute of Mental Health, on adolescents' perceptions of psychiatric medication use. It aims to provide insight into the under-researched area of the life experiences of adolescents on psychiatric medications and, in particular, how they cope at college. The study findings will contribute to a larger international project, coordinated by McGill University in Montreal, Quebec, that seeks to understand the social and cultural differences associated with psychiatric medication use among college students in different countries.

Faculty Associate Awarded Grant to Support Research on Communication Disorders

Barbara A. Lewis, associate professor of communication sciences and adjunct professor of pediatrics, has been awarded an R01 grant from the National Institute on Deafness and Other Communication Disorders.



The grant provides five years of support to Dr. Lewis's project "A Familial Study of Severe Phonology Disorders." This study is a continuation of a 20-year genetic study of speech sound disorders (SSD) that seeks to understand the role of genes in SSD and in co-morbid language impairment and reading disorders.

Speech sound disorders are the most common communication disorder in early childhood and have important implications for well-being, including short- and long-term effects on academic achievement. Despite the prevalence of SSD, there have been no large, longitudinal studies that have followed children with SSD from early childhood through young adulthood to identify the long-term manifestations of SSD and its effects on educational and vocational attainment. Dr. Lewis's study will do just that. The funded research will follow the sample of youth with SSD from Dr. Lewis's previous study to reveal the types of long-term problems to which individuals with early SSD are vulnerable. In addition, the study will identify risk factors, such as co-morbid language disorders, that may contribute to poor long-term outcomes. Finally, this research will determine needs for policies and programs focused on adolescents and young adults to reduce the effects of communication disorders and ensure more favorable educational, vocational and behavioral outcomes.



CWRU PRESIDENT BARBARA SNYDER HOSTS DINNER IN RECOGNITION OF THE SCHUBERT CENTER

On February 9, 2009, Case Western Reserve University President Barbara Snyder hosted a dinner for friends of the University and members of the community to draw attention to the accomplishments and activities of the Schubert Center. Following President Snyder's welcoming remarks, Dean Cyrus Taylor of the College of Arts and Sciences commented on the Center's importance to the College and the University. Jill Korbin gave a brief presentation on the Center's activities and goals. She also recognized Emeritus Professor Jane Kessler, who directed the Schubert Center's predecessor, the Mental Development Center, from 1959 to 1978. Elizabeth Short, Eileen Anderson-Fye, and Molly Irwin led the dinner conversation about child issues with President Snyder's guests. Students (Marion Armstrong, Kelly Christian, Gennifer Gibbs, and Caroline Sonnefeld) also attended to illustrate the opportunities for students available through the Schubert Center's programs.

Research ShowCASE The Economy and Child and Youth Well-Being: Critical Issues for Research, Practice and Policy

>> **THURSDAY, APRIL 16, 2009** <<

Difficult economic times call for creative and collaborative solutions to many of the issues facing children, youth and families. This year, the Schubert Center will present a session at Research ShowCASE examining how the economic downturn is affecting child and youth well-being and exploring avenues for addressing these challenges. Panelists will include policy experts, representatives of community agencies, and researchers representing the Faculty Associates of the Schubert Center. The Faculty Associates of the Schubert Center represent child researchers across the university who are interested in connecting their research to child policy and practice.

Participating in this year's panel are Amy Hanauer, Executive Director, Policy Matters Ohio; James Lalumandier, D.D.S., M.P.H., Associate Professor and Chair in the Department of Community Dentistry at the School of Dental Medicine at Case Western Reserve University; David Miller, Ph.D., M.P.H., M.S.W. Councilman-At-Large, South Euclid, Ohio; and Gayle Channing-Tenenbaum, M.S.W. The panel will be moderated by Jill Korbin and Molly Irwin of the Schubert Center.



CWRU LIBRARY RECEIVES GIFT OF CHILDREN'S BOOKS

Kelvin Smith Library is fortunate to have received a generous gift of children's books from the library of Audrey Watts, a Rocky River resident. In 2007, Mrs. Watts donated 26 titles to the Department of Special Collections in the Kelvin Smith Library to promote the study of children's books and illustrations from the 19th and early 20th centuries.

Many familiar authors and titles are represented, including Louisa May Alcott, Frank L. Baum, Lewis Carroll, Mary Mapes Dodge, and Johanna Spyri. A multi-volume set, *Journeys Through Bookland*, is of interest for its excellent selection of stories, poems and illustrations, produced by some of the most talented writers and poets in the field of children's literature.

SCHUBERT CENTER AND STEP2 PARTNERSHIP

The Schubert Center for Child Studies announces the launch of CreativePlayPlus.com, a joint venture in blogging with Step2, the nation's largest toddler toy manufacturer and Optiem, a Cleveland based interactive marketing agency. This new site draws upon the expertise of Case Western Reserve University faculty in diverse fields of knowledge including psychology, anthropology, communication sciences and music education. The new site encourages children to use their imaginations in creative play, and features research conducted by Case Western Reserve experts regarding children and play. The site also highlights current news and suggested activities.

In addition to serving as a way to share university-based expertise on children and play directly with caregivers, the site's creation is an innovative public-private partnership between CWRU's Schubert Center for Child Studies, Step2 and Optiem.

Kelly M. Christian, M.A., has joined the Schubert Center to work on the Creative Play Plus blog. Kelly is a third year, child clinical psychology graduate student at Case Western Reserve University. Her research interests include improving children's play skills, exploring the relationship between children's anxiety and their play abilities, and the utility of children's pretend play.

You can find the blog at <http://creativeplayplus.com/>



COMMUNITY FORUMS WITH HELP ME GROW During this past academic year, the Schubert Center began a partnership with the Help Me Grow initiative of Cuyahoga County, incorporating research conducted by the Center's Faculty Associates into Help Me Grow's Community Information Forums.

Help Me Grow is a statewide child health and development program that provides services to expectant parents, newborns, infants and toddlers. Three CWRU faculty researchers presented their findings at last year's forums:

Maureen Hack, professor of pediatrics and director of the *Neonatal High Risk Follow-Up Program*, presented her research on long-term outcomes for low birth-weight children.

Linda Lewin, assistant professor in the Frances Payne Bolton School of Nursing, presented her research on depression rates among mothers with children in the child welfare system.

Cyleste Collins, research assistant professor at the Mandel School of Applied Social Sciences, presented her research on family homelessness.

The session also included participation by families, service providers and policy makers, and lively discussions of how research, policy and practice can be better integrated in order to make improvements in the lives of children and families.

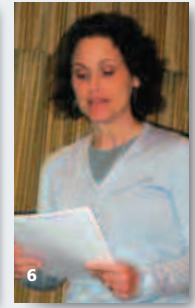
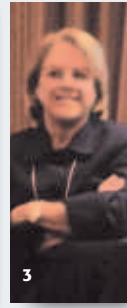
University-Based Child and Family Policy Consortium Symposium

On April 1, 2009, the Schubert Center participated in a pre-conference symposium, organized by the national University-Based Child and Family Policy Consortium, at the Society for Research in Child Development meeting in Denver, Colorado. The session, titled "Child Development Science and Policy: Where Have We Been? Where Are We Going?", featured Dr. Edward Zigler, director emeritus of the Edward Zigler Center in Child Development and Social Policy at Yale University, and Dr. Deborah Phillips, professor of psychology and co-director of the Center for Research on Children in the United States at Georgetown University.

The University-Based Child and Family Policy Consortium is an affiliation of university-based centers for child research and policy across the United States. Over the past few years, the Consortium has sponsored a number of child policy-related projects including teaching, mentoring, and disseminating research results. For information about the Consortium, see the Schubert Center Website or visit www.childpolicyuniversityconsortium.com. For information about the Society for Research in Child Development Meeting, visit www.srcd.org/.

University-Wide Strategic Planning Highlights Child Issues

"Child Development" has been highlighted as one of the focus areas in Case Western Reserve University's Strategic Plan (see www.case.edu/provost/uplan/). Jill Korbin and Elizabeth Tracy (MSASS) have been named by Provost Baeslack as co-convenors of the working group charged with developing a strategic plan for child-related work across the University. The Schubert Center Faculty Associates and additional faculty members identified by the provost have been working to draft priorities to promote collaborations to enhance research, education and community affiliations aimed at understanding and improving the lives of children.



PHOTOS FROM THE NOVEMBER 2008 CONFERENCE ON ADOLESCENCE "NEW DIRECTIONS IN POLICY-RELEVANT RESEARCH ON ADOLESCENCE: PERSPECTIVES FROM PSYCHOLOGICAL ANTHROPOLOGY." 1 PROVOST WILLIAM A."BUD" BAESLACK, III 2 MOLLY IRWIN, DIRECTOR, THE CHILD POLICY INITIATIVE AT THE SCHUBERT CENTER 3 JILL KORBIN, DIRECTOR, SCHUBERT CENTER 4 CAROL WORTHMAN, EMORY, AND ROBERT A. LEVINE, HARVARD 5 ROBERT LEMELSON, UCLA AND FOUNDATION FOR PSYCHOCULTURAL RESEARCH 6 REBECCA LESTER, WASHINGTON UNIVERSITY

National Conference on Adolescence CONTINUED FROM PAGE 1

The second panel, moderated by Molly Irwin, included local, state and national experts on the link between research and policy. Speakers were Marcia Egbert (The George Gund Foundation), Robin Harris (Office of Governor Ted Strickland), Amy Swanson (Voices for Ohio's Children) and Brian Wilcox (University of Nebraska-Lincoln).

During a lively lunch session, conference participants discussed the morning sessions in light of their own experiences. The discussions at each table were led by one of the speakers.

The afternoon panel, moderated by Elizabeth Short, examined "Contexts, Stresses and Strengths Impacting Adolescence," with presentations by Ronald Dahl (Pittsburgh), Thomas McDade (Northwestern), David Miller (CWRU), Claudia Coulton (CWRU) and Jill Korbin (CWRU). The first day of the conference concluded with a focused discussion of mixed method approaches to studying adolescence led by Tom Weisner (UCLA).

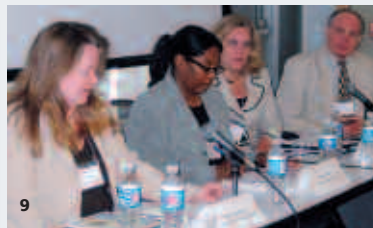
The second day of the conference began with the screening of a new film, *Forty Years of Silence, An Indonesian Tragedy*, by psychological anthropologist and cinematographer Robert

Lemelson (UCLA and Foundation for Psychocultural Research). Dr. Lemelson led a stimulating discussion about the film and its implications, with many of the themes continuing to permeate the rest of the morning sessions. He also moderated the morning panel, "Mental Health: Change, Culture and Identity," which featured Eileen Anderson-Fye, Jerry Floersch (CWRU) and Rebecca Lester (Washington University).

The conference concluded with a group discussion, "Where are We in Linking Research and Policy? Where Should We Go?" Plans are under way to continue these discussions on the Case Western Reserve University campus and at other venues. Eileen Anderson-Fye and Jill Korbin led a session at the meetings of the Society for Psychological Anthropology in Asilomar, California in late March 2009.

Jessica McRitchie, the Schubert Center administrator, worked tirelessly in her role as conference coordinator. Graduate students in anthropology volunteered at the conference, particularly in taking notes during the lunch discussion.

For more information on this conference, and other Schubert Center activities, please go to www.case.edu/artsci/schubert/.



7 RONALD DAHL, PITTSBURGH; THOMAS MCDADE, NORTHWESTERN; DAVID MILLER, CWRU; CLAUDIA COULTON, CWRU 8 THOMAS S. WEISNER, UCLA 9 MARCIA EGBERT, GEORGE GUND FOUNDATION; ROBIN HARRIS, OFFICE OF GOVERNOR TED STRICKLAND; AMY SWANSON, VOICES FOR OHIO'S CHILDREN; BRIAN WILCOX, UNIVERSITY OF NEBRASKA/LINCOLN 10 JERRY FLOERSCH, CWRU

2008-09 seminar series CASE CONVERSATIONS ON CHILDREN IN RESEARCH AND POLICY

All lectures run from 11:45am-1:00pm and take place at the 1914 Lounge in Thwing Center on the CWRU Campus.

For further information about this series, visit the Schubert Center for Child Studies website: www.case.edu/artsci/schubert

TUESDAY, OCTOBER 14, 2008

University-Community Partnership in Cuyahoga County: The Youth Risk Behavior Survey

Mona Shediak-Rizkallah, Ph.D, Interim Director of the Center for Adolescent Health

Jean Frank, M.P.H., Manager of Community Initiatives Center for Adolescent Health and

TUESDAY, NOVEMBER 11, 2008

Student Experiences: Bridging Undergraduate Education and Child Policy • Schubert Center Mann Child Policy Externs will discuss their summer 2008 Capstone/Externship experiences

Gennifer Gibbs, Placement, The Village Network (*Juvenile Justice/The Adam Walsh Act*)

Caroline Sonnefeld, Placement, Voices for Ohio's Children (*Child Health/Medicaid & SCHIP expansion, outreach and enrollment*)

TUESDAY, FEBRUARY 10, 2009

Effects on Emotional and Behavior Problems From Early Childhood Through Adolescence

Arin M. Connell, Ph.D., Assistant Professor, Department of Psychology

TUESDAY, MARCH 17, 2009

Pathways to Culturally Informed Music Education: Lessons from The Gambia

Lisa Huisman Koops, Ph.D., Assistant Professor, Department of Music

TUESDAY, APRIL 14, 2009

Parenting Very Low Birth Weight Children From Birth to Adolescence

Lynn Singer, Ph.D., Deputy Provost and Vice President for Academic Programs, Professor of Pediatrics, Psychology and General Medical Sciences

THE SCHUBERT CENTER thanks the following individuals for contributing their expertise as discussants for the CASE CONVERSATIONS ON CHILDREN IN RESEARCH AND POLICY series: Gita P. Gidwani, M.D.; Michelle Katona; Marcia Egbert; A. Kristin Brooks, M.A., M.S.N., C.N.M.; Ann Stahlheber, M.S., R.D., L.D.; Patrick J. Canary, M.Ed.; Wade E. Lucas; Paul Hill, Jr.; Kaycee Rudolph, M.S.S.A., L.I.S.W.; Lisa Bottoms; Debra Lewis-Curlee; Kathryn D. Jillson, M.A., C.C.C.-S.L.P.; Caroline Kaczala, Ph.D.; Mark Freeman, Ph.D; Najeebah Shine, M.S., R.D., L.D.; David Harrison, R.N., B.S.N., Dani Altieri Marinucci, Johanne Belzile, Sylvia Easley; Ronna Kaplan, M.A., M.T.-B.C., N.M.T.; and Leona Cuttler, M.D.

Jill E. Korbin, Ph.D. DIRECTOR | Molly Irwin, M.P.H. DIRECTOR, CHILD POLICY INITIATIVE | Elizabeth Short, Ph.D. ASSOCIATE DIRECTOR | Eileen Anderson-Fye, Ed.D. ASSOCIATE DIRECTOR | Jessica McRitchie ADMINISTRATOR | Gayle Channing Tenenbaum, M.S.W. CONSULTANT | Donald Freedheim, Ph.D. FOUNDING DIRECTOR | Michelle McTygue DESIGN



Schubert Center for Child Studies
615 Crawford Hall
10900 Euclid Avenue
Cleveland, OH 44106-7179

phone 216.368.0540
fax 216.368.1196
www.case.edu/artsci/schubert/
schubertcenter@case.edu