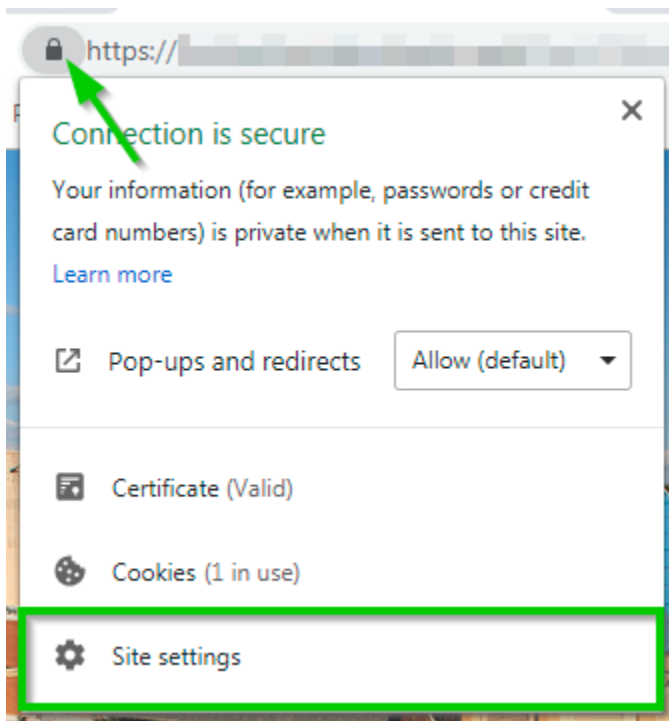



# Instructions to Allow Flash

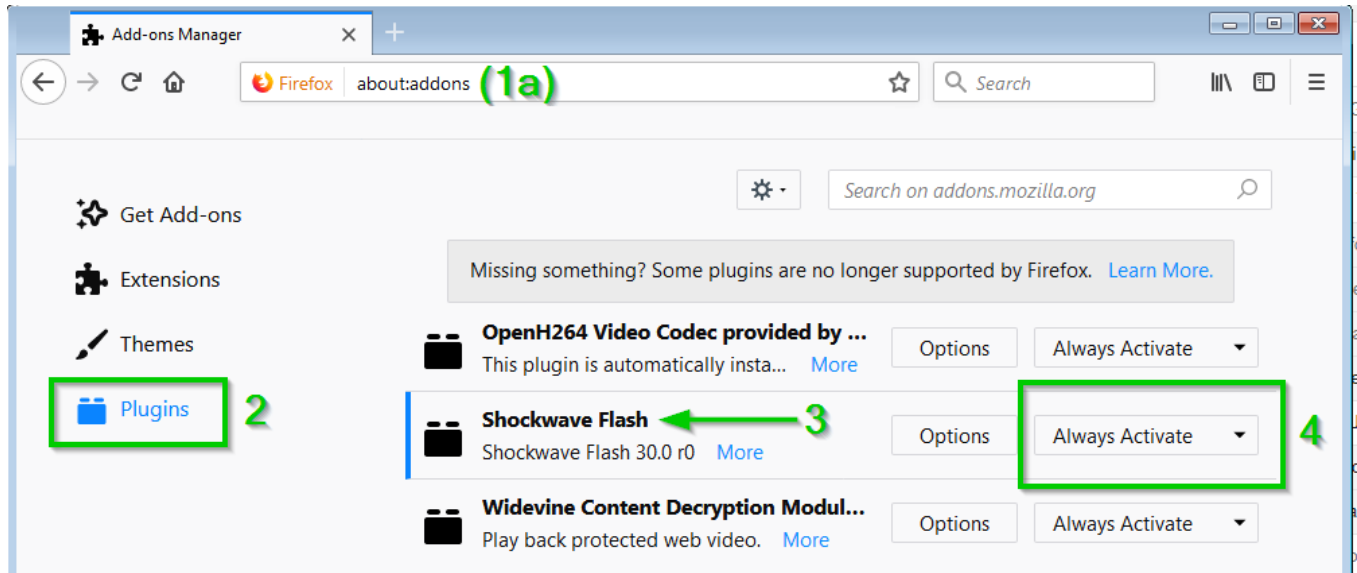
## Chrome

1. Visit the LMS site
2. Locate the address bar at the top (where the site link is)
3. Please click any of the following: **Secure**, the **padlock icon**, the **(i) icon**
4. In the menu, select **Site Settings**
5. In the new tab, locate **Flash**
6. Select **Allow** from the drop down
7. Close out of the Settings page
8. Reload the LMS page



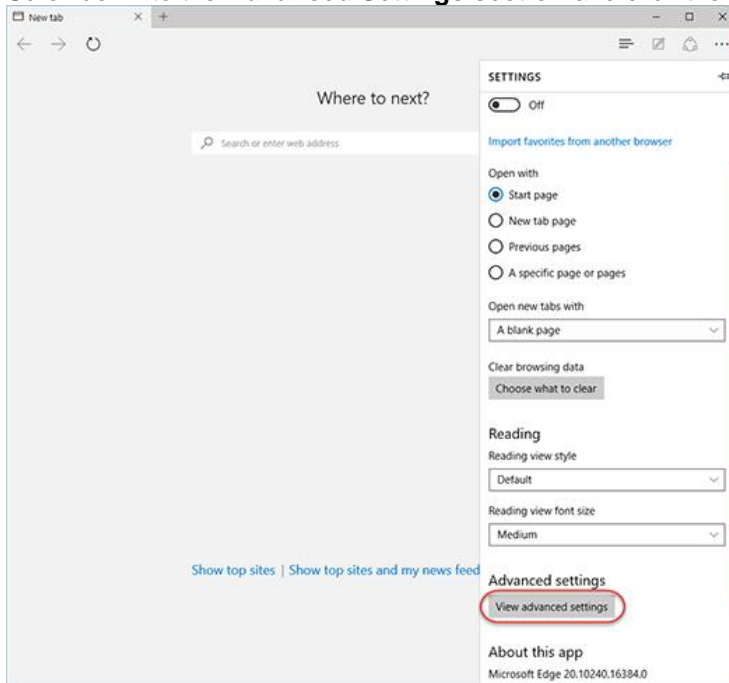
## Firefox

1. Select **Menu**  > **Add-ons**.
  - a. Or go to **about:addons** in a new tab.
2. Select **Plugins**.
3. Look for **Shockwave Flash** in the list.
4. Select **Always Active** from the drop down.

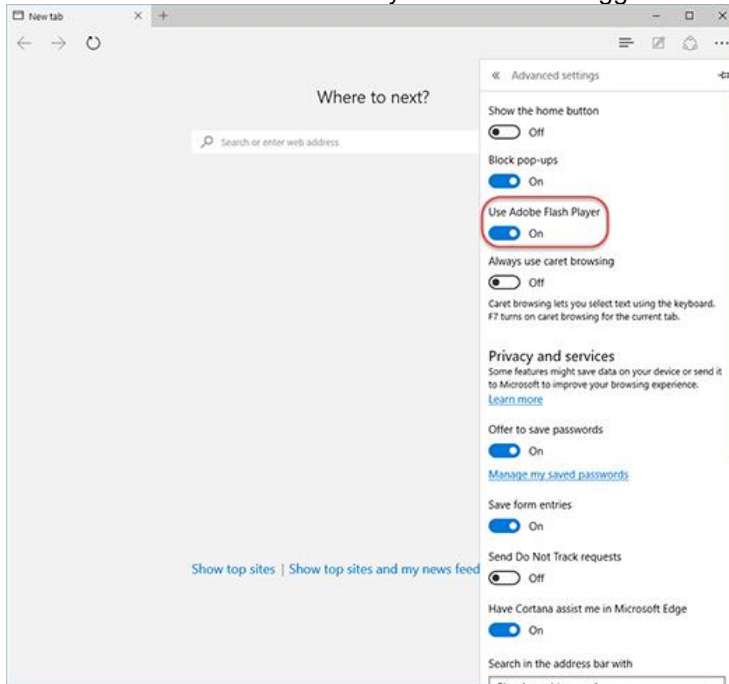


## Edge

1. Click the "..." button to access the Edge menu.
2. Click on **Settings**.
3. Scroll down to the **Advanced Settings** section and click the **View advanced settings** button.




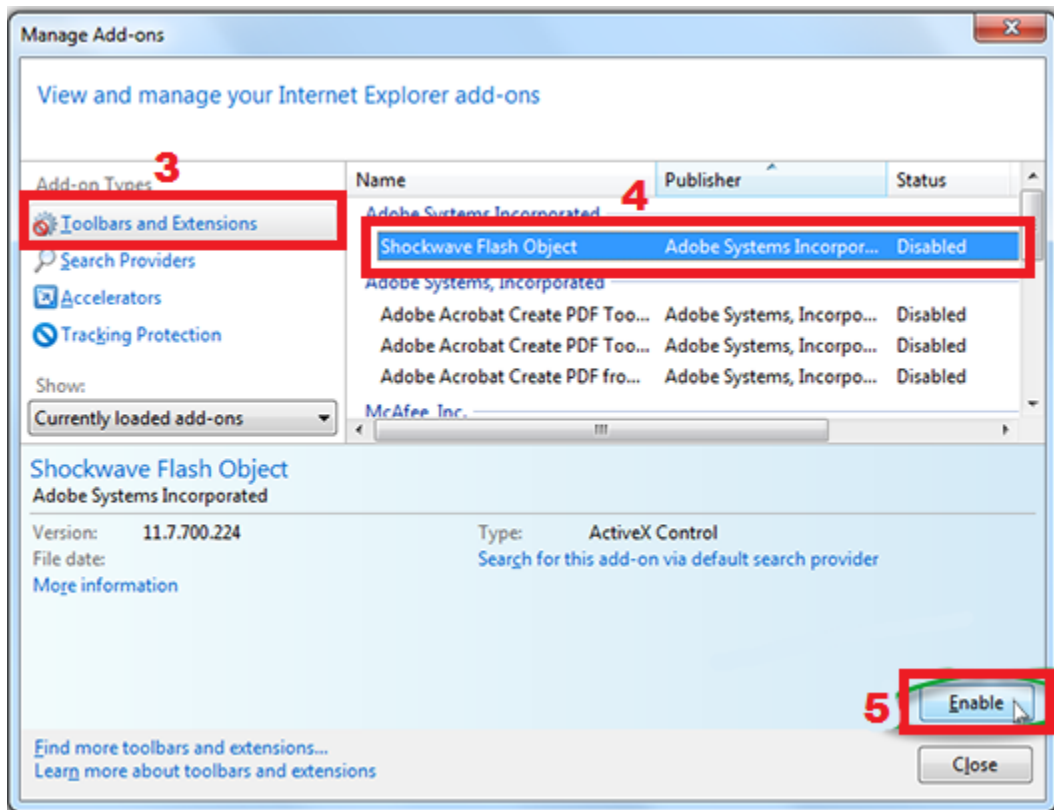
4. Locate the Use Adobe Flash Player section and toggle the switch **on** to enable Adobe Flash Player.



5. Refresh your web page.

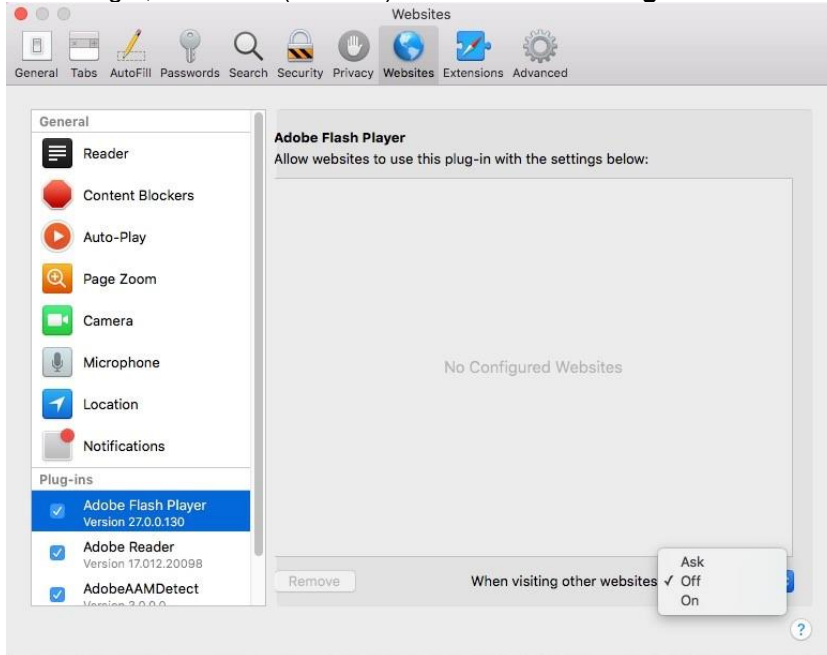
## IE

1. Click the **Tools** icon (  ) in the upper-right corner of Internet Explorer.
2. In the pop-up menu that appears, click **Manage Add-ons**.
3. In the dialog box that appears, select **Toolbars and Extensions**.
4. Find and select “**Shockwave Flash Object**” (another name for Flash Player).
5. In the lower-right corner of the Manage Add-ons dialog box, click **Enable**.
6. **Close** out of the Manage Add-ons dialog box and refresh IE.



## Safari (Mac 10.11, 10.12, and later)

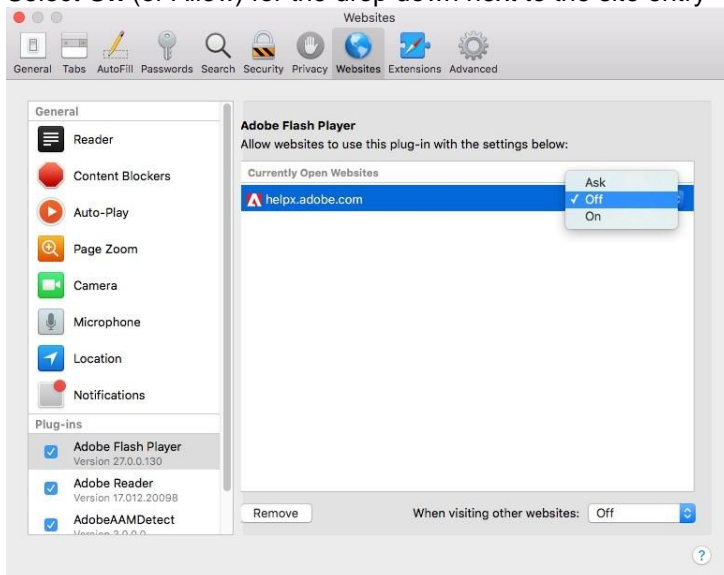
1. **Safari > Preferences**
2. Select the **Websites** tab
3. Select **Adobe Flash Player** on the left and check box to enable Flash Player
4. On the right, select **On** (or Allow) for the **When visiting other websites** drop down



5. Click **Done**, close the **Preferences** panel, and **Reload** the browser page, to enable the change.

### To configure Flash for individual sites like **Adobe Connect** or the **LMS**

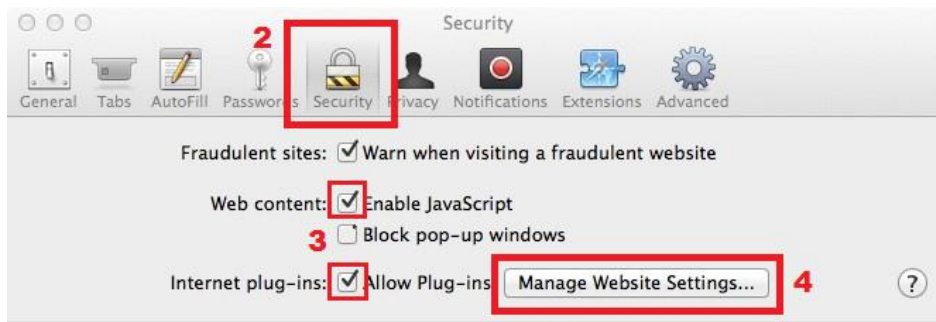
1. Open the site. (To open Adobe Connect, please click on **Enter my room**) then follow above steps 1-4
2. Locate the site in the **Currently Open Websites** list
3. Select **On** (or Allow) for the drop down next to the site entry



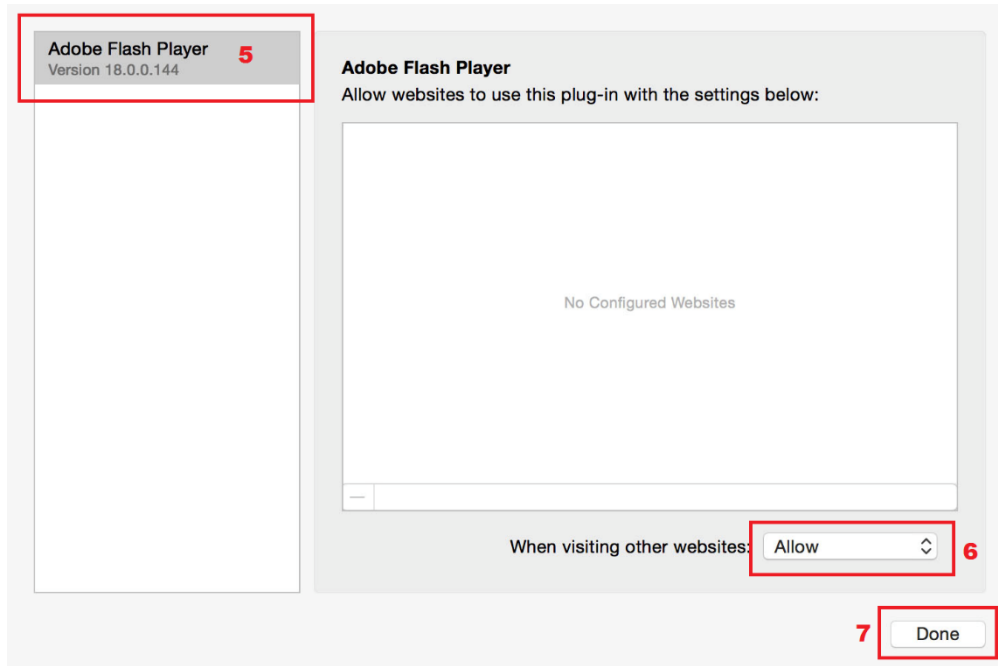
4. Click **Done**, close the **Preferences** panel, and **Reload** the browser page.

## Safari (Mac 10.8 and 10.9)

1. Go to **Safari > Preferences**
2. Click the **Security** tab.
3. Select **Enable JavaScript** and **Allow Plug-ins**.
4. Click **Manage Website Settings...** button.



5. Select **Adobe Flash Player**.
6. From the **When visiting other websites** drop down menu, choose **Allow**.
7. Click the **Done** button and refresh Safari.



## Safari (Mac 10.6, 10.7)

1. Got to **Safari > Preferences**.
2. Select the **Security** tab.
3. Check **Allow Java** and **Allow All Other Plug-ins**.
4. Close the **Preferences** window and refresh Safari.

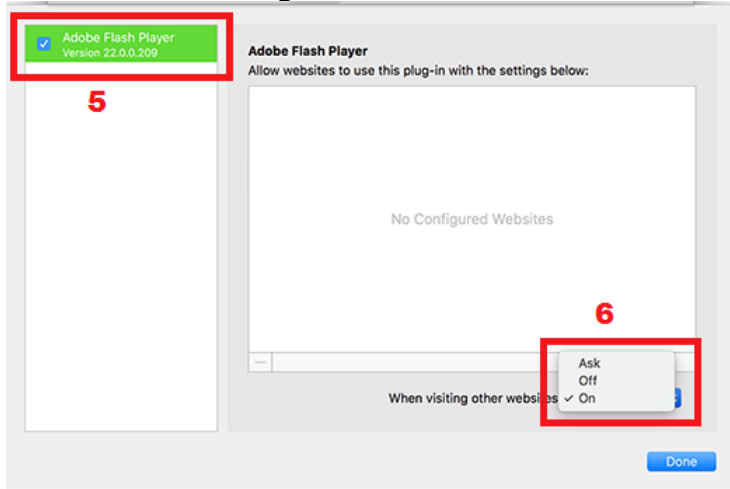


## Safari (Mac 10.0)

1. Go to **Safari > Preferences**
2. Click the **Security** tab
3. Select **Enable JavaScript** and **Allow Plug-ins**
4. Click the **Plug-in Settings** button.



5. Select **Adobe Flash Player**.
6. From the **When visiting other websites** menu, choose **On**.



7. For each website appearing in **Currently Open Websites**, choose **On** in the menu on the right.
8. Click **Done** and refresh Safari

