



Sustainable CWRU Update

Stephanie Corbett

New Orientation Event @ the University Farm



Think Beyond the Classroom

- Targeted 1300+ first year students
- Over 30 faculty-led sustainability focused discussions

Farm Improvements & Program



- 15,000 lbs of food will be harvested for the Farm Food Program this year
- 2,900+ students and faculty utilized site for classes
- 700+ K-12 students have visited
- Metroparks partnership to grow zoo animal feed
- Largest ever Farm Harvest Festival event 9/20/14

New Alternative Fuel Shuttle



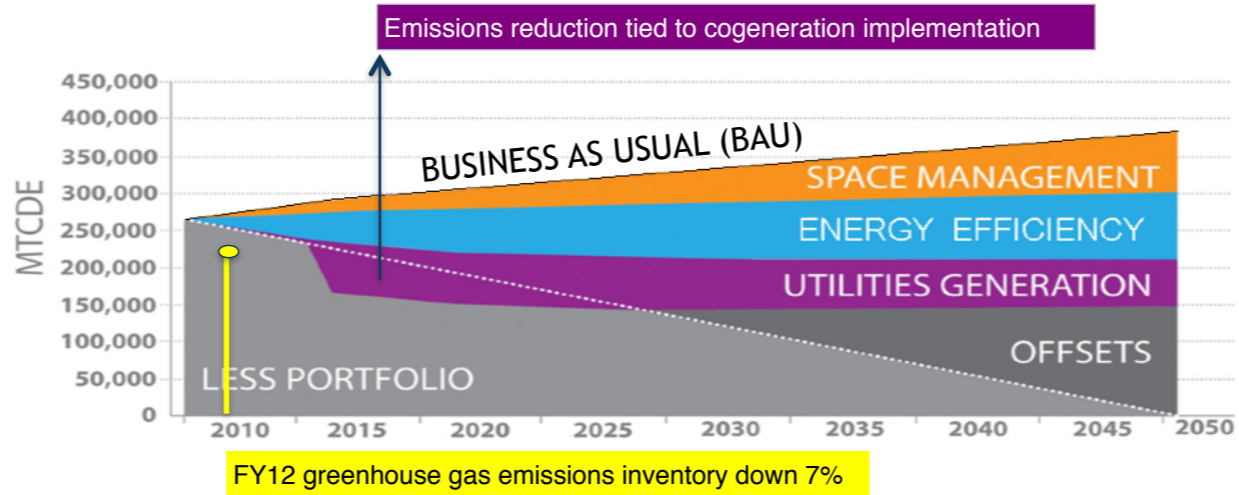
- Runs on compressed natural gas
- 32 passenger
- Transporting researchers, classes and volunteers several days a week

Climate Action Plan Commitments



- Public emissions inventory every 3 years
- Report on CAP progress every 2 years
- Expand sustainability literacy academically

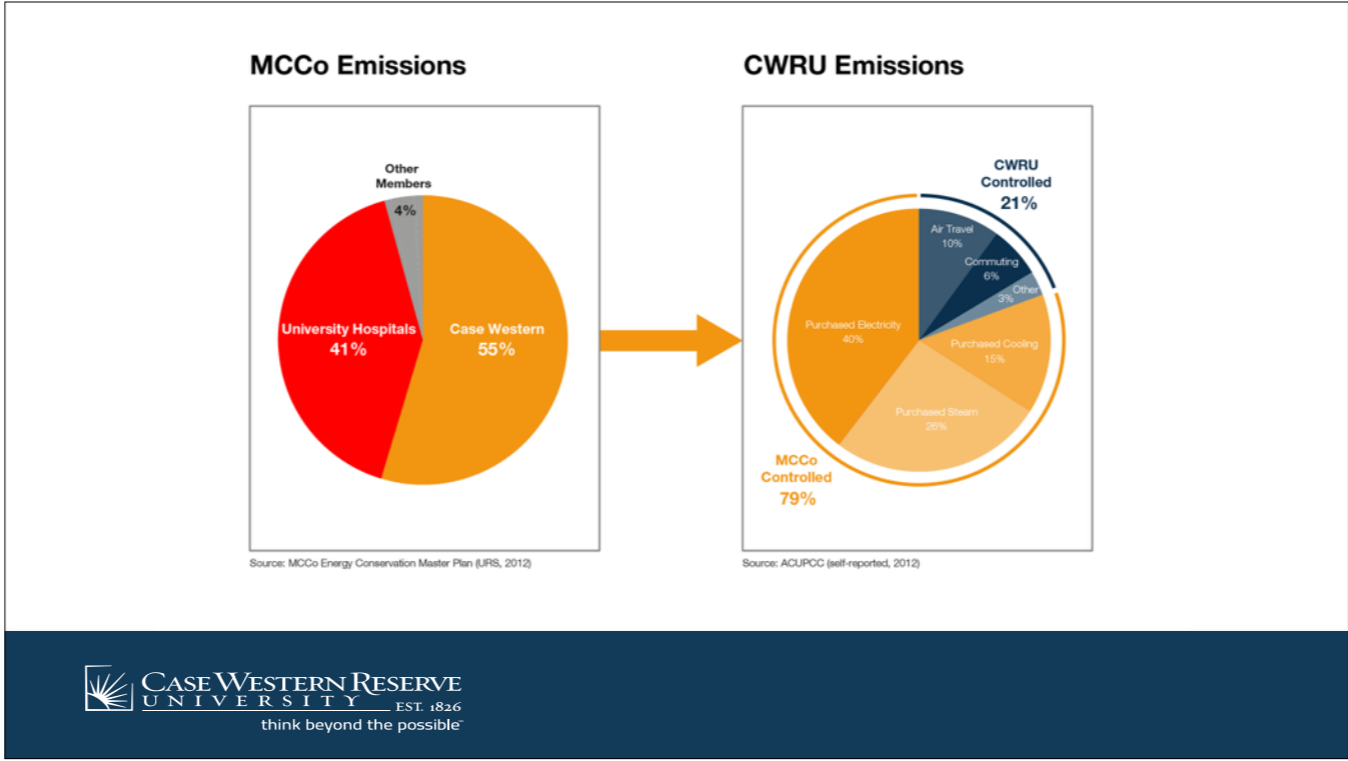
Climate Action Plan Emissions Update



FY09 Net Emissions 250,919
 • FY12 Net Emissions 232,582

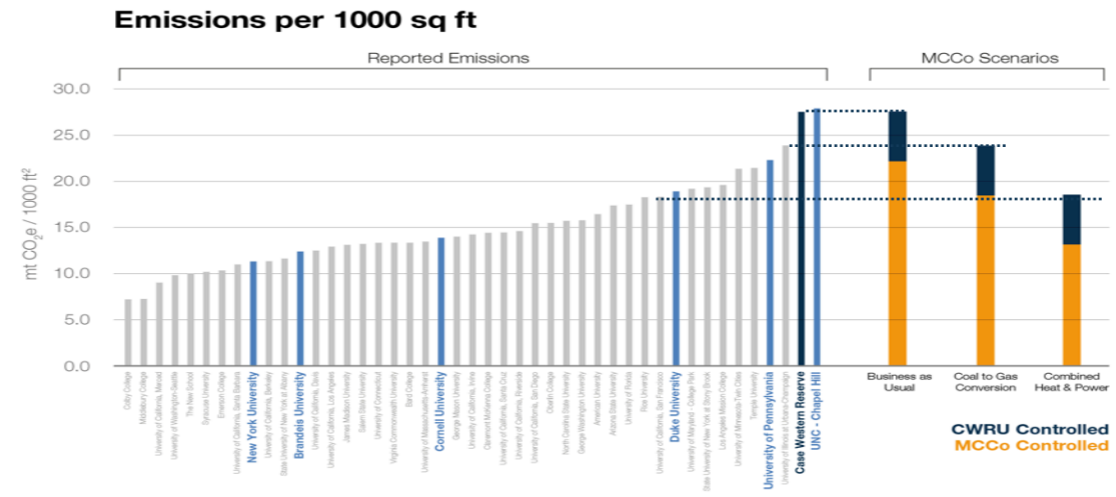
FY12 net emissions 232,582
 FY09 net emissions 250,919

A reduction of the equivalent electricity usage from over 2,700 average American homes
 The CAP plan calls for continued investment in energy efficiency from 2010-2015 at the level of \$600,000 annually, embedded in the Facilities Services budget.



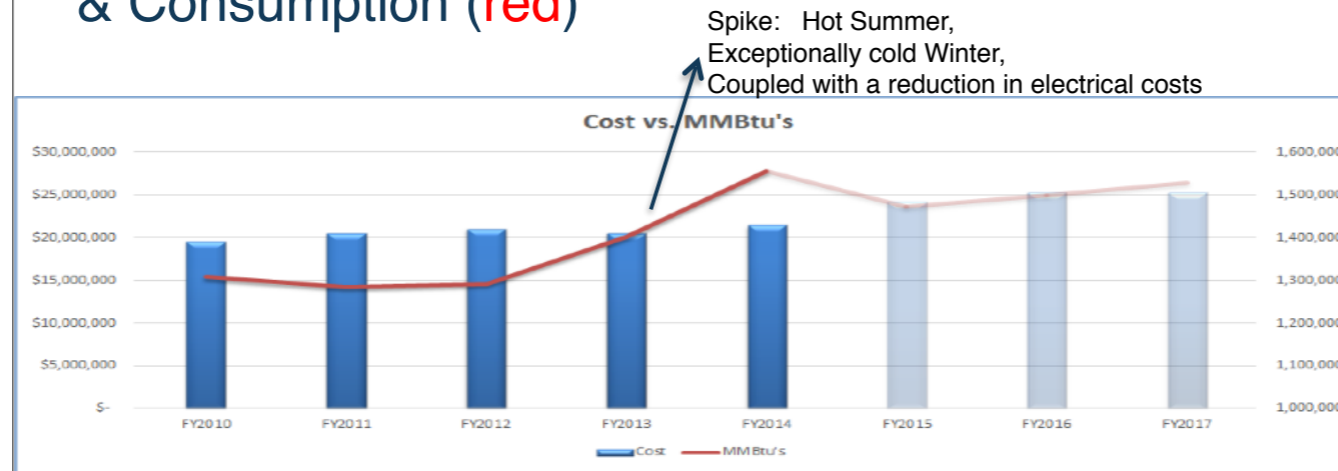
- 2012
- CWRU comprises 55% of MCCo emissions
 - Conversely, MCCo directly impacts 79% of CWRU emissions

Peer Benchmarking with MCCo Scenarios



Combined heat and power would bring CWRU emissions in line with its research-intensive peers

CWRU Utility Costs (blue) & Consumption (red)



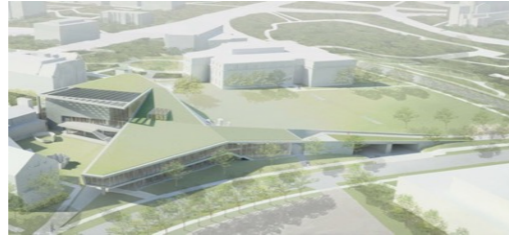
2014: polar vortex
 2015: electricity capacity increase is -\$0.5
 2016: electricity capacity increase is -\$1.2M
 2017: capacity charge goes back down almost a full cent/kwh
 * Overall: MMBTU/square foot is pretty consistent from year to year when normalized for weather
 FY17 expecting an increase to \$16/klb is a 14.3% increase in steam cost, which has about a 1.2m difference in projected cost because of conversion to natural gas boilers
 Projections place costs over \$25m starting in FY2016
 DOES NOT include: Health Ed in the FY 17 projection

Energy Efficiency Investments



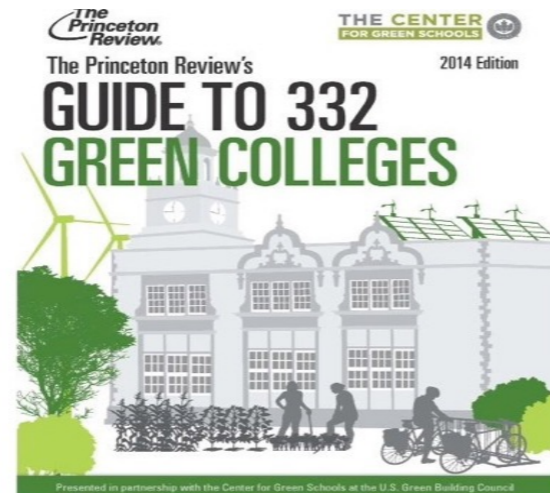
- MCCO Revolving Energy Efficiency Fund
 - 7 projects funded to date
 - Approximately \$1 million invested
- Retro-commissioning Team in place & Strategy being developed

University Green Buildings



1. North Residential Village (Silver & Gold/
House 5 only)
2. Tomlinson Hall (Silver)
3. Tinkham Veale University Center
(Projecting Gold)
4. Wyant Athletics and Wellness Center
(Projecting Silver)
5. **New Residence Hall**
6. **Mandel School of Applied Social
Sciences**
7. **Medical Education Campus**
8. **Maltz Performing Arts Center Phase II**

Recent Accolades



- NOACA Bronze Commuter Challenge Award
- Princeton Review Green Colleges
- Sierra Club Cool Schools