

Green Bag Lunch: The Circular Economy Beneath Your Feet



*Putting good ideas to work for a
carbon-neutral, flourishing campus*

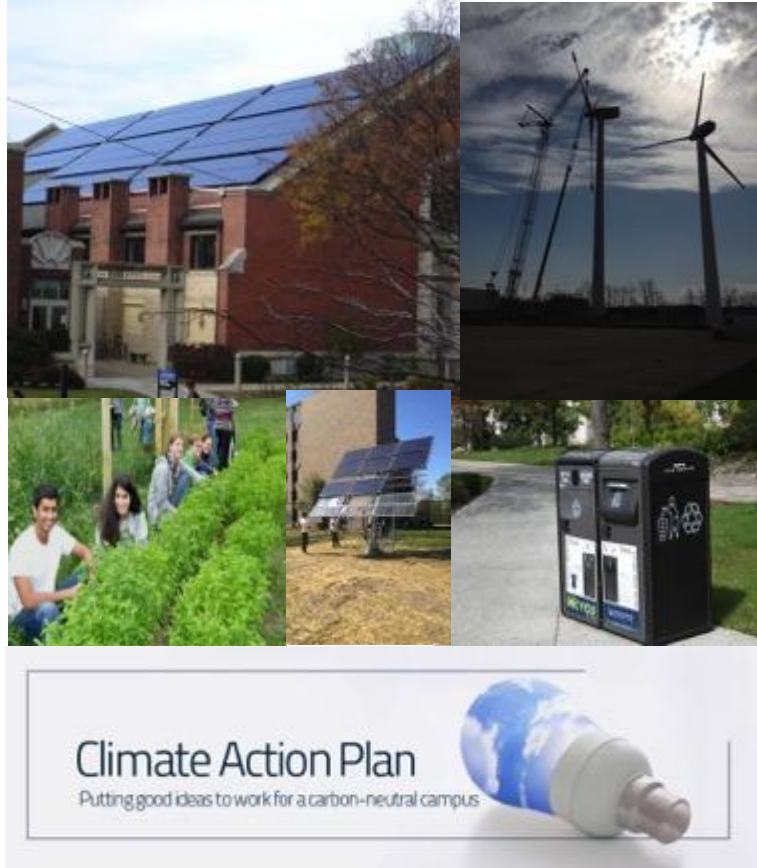
Sustainable
CWRU

Case Western Reserve University Stats

- 8 millions sq. feet
- \$360.1 million in research revenues
- \$4.8 billion endowment
- 750,000 annual community volunteer hours
- 185 urban acres
- 140+ buildings
- 400 acres off-campus Univ. Farm
- 18,000+ people (10,000 students)
- \$20+ million annual utility spend
- 200,000 mmtco2e
- 1,300 research labs
- 1.8 million local food spend by Bon Appetit (approx)
- 130 fleet vehicles (approx)
- 140 bike racks
- 5 bike fixit stations
- 1000+ bikes
- 1,001 trees
- 1,002 squirrels



Sustainable CWRU Elements



- The Fowler Center for Business as an Agent of World Benefit
- Great Lakes Energy Institute
- University Farm
- Summer Undergraduate Research in Energy and Sustainability (SUREs)
- Social Justice Alliance
- Campus Planning & Facilities Management
- Many Student Groups
- Environmental Studies Major
- Sustainability related research
- Climate Action Plan

What We Work On

- Climate Action Plan
- Energy Conservation
- Green Buildings
- Sustainable Transportation
- Green Grounds
- Recycling & Materials Management
- Sustainability Data Collection
- Engagement and Creating a Culture of Sustainability



Big Green Event

Wednesday, October 9

5:00 - 7:00pm

Tink Ballrooms

Join the CWRU Office of Energy & Sustainability for a State of Sustainability update, quick lightening round updates from many groups on campus and a keynote speaker.

Energy Contest

October 1 - 14

Work together with your res hall and Greek Housing mates to reduce your energy usage together. Winning buildings get a prize! More into to come!

TODAY'S SPEAKER:

Wendell Hadden

Vice President of Education, Interface

Coming Up Soon

Today!

Scooter Demo

between Tink and KSL

Now through 1:30pm

Giving away free helmets!

Farm Harvest Festival

This Saturday, Sept. 14

1:00 - 6:00pm

University Farm in Hunting Valley

Shuttles leaving from campus

LEED Green Associate Training with Leading Green

Saturday, Sept. 21

1:00 - 4:30pm

Clark Hall, 302

CWRU Energy & Sustainability Team – sustainability@case.edu



Stephanie Corbett, Director of Energy & Sustainability

ssc72@case.edu, 216-368-6174

Erin Kollar, Assistant Director Sustainability

erk1@case.edu, 216-368-6989

Erika Weliczko, Energy Manager

ew3@case.edu

Maureen Wise, Sustainability Consultant

mew128@case.edu,