

Green Bag Lunch: Changing Ecosystems at the CWRU University Farm



*Putting good ideas to work for a
carbon-neutral, flourishing campus*

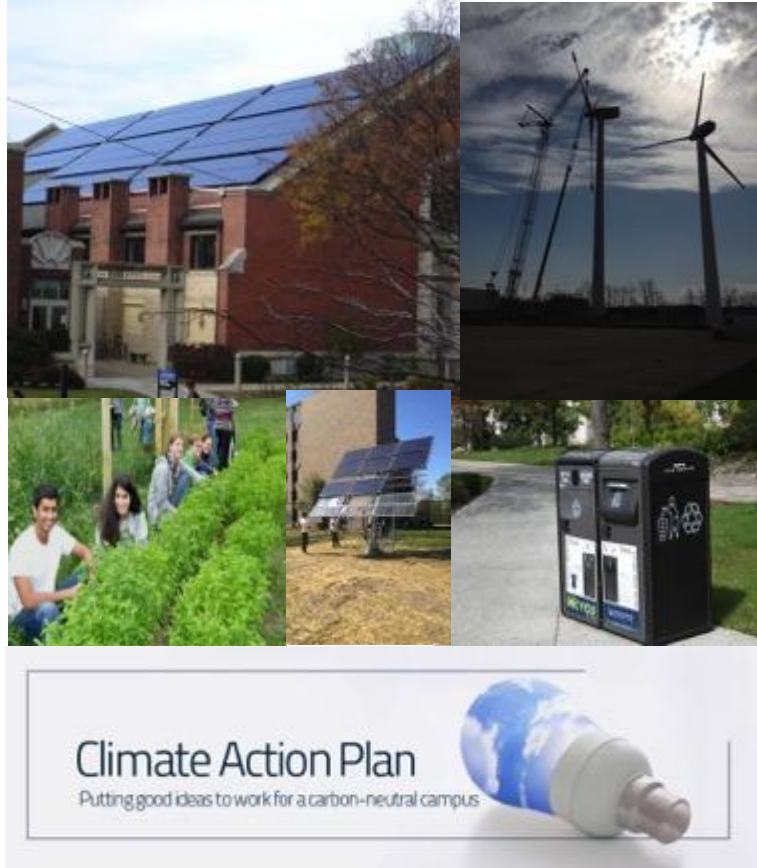
Sustainable
CWRU

Case Western Reserve University Stats

- 8 millions sq. feet
- \$360.1 million in research revenues
- \$4.8 billion endowment
- 750,000 annual community volunteer hours
- 185 urban acres
- 140+ buildings
- 400 acres off-campus Univ. Farm
- 18,000+ people (10,000 students)
- \$20+ million annual utility spend
- 200,000 mmtco2e
- 1,300 research labs
- 1.8 million local food spend by Bon Appetit (approx)
- 130 fleet vehicles (approx)
- 140 bike racks
- 5 bike fixit stations
- 1000+ bikes
- 1,001 trees
- 1,002 squirrels



Sustainable CWRU Elements



- The Fowler Center for Business as an Agent of World Benefit
- Great Lakes Energy Institute
- University Farm
- Summer Undergraduate Research in Energy and Sustainability (SURES)
- Social Justice Alliance
- Campus Planning & Facilities Management
- Many Student Groups
- Environmental Studies Major
- Sustainability related research
- Climate Action Plan

What We Work On

- Climate Action Plan
- Energy Conservation
- Green Buildings
- Sustainable Transportation
- Green Grounds
- Recycling & Materials Management
- Sustainability Data Collection
- Engagement and Creating a Culture of Sustainability





Our Upcoming Events

Green Bag Lunch Series: Green Buildings and Our Health

Tuesday, Feb 18, 2020 | Noon - 1:00pm

Tink Senior Classroom

Save the date: March Green Bag Lunch Series

Wednesday, March 25, 2020 | Noon - 1:00pm

Tink Senior Classroom

Searching for Champions

We're looking for input from our campus community to nominate our 2019/ 2020 Sustainability Champions!

TODAY'S SPEAKER:

Mike Benard

CWRU Associate Professor, Biology Department

CWRU Energy & Sustainability Team – sustainability@case.edu



Stephanie Corbett, Director of Energy & Sustainability

ssc72@case.edu

Erin Kollar, Assistant Director Sustainability

erk1@case.edu

Erika Weliczko, Energy Manager

emw3@case.edu

Maureen Wise, Sustainability Consultant

mew128@case.edu