

[View this email in your browser](#)



MARY ANN SWETLAND  
CENTER FOR  
ENVIRONMENTAL HEALTH

# The Swetland Scoop

December 2020

---

## News & Announcements

### Results From the Nutrition Environment Measures Surveys (NEMS) 2015–2019

A recently released [data brief](#) documents the main findings from food retail audits conducted over the past five years, between 2015 and 2019. These audits, or the Nutrition Environment Measures Survey (NEMS), were carried out each summer and fall by members of the Swetland team in the Cleveland neighborhoods of: Hough, Buckeye–Shaker, and St. Clair–Superior, as well as the Southside neighborhood in Columbus.



The findings indicate that the overall NEMS scores – based on the availability,

information, including that most (79.5%) of stores accepted payment through the Supplemental Nutrition Assistance Program (SNAP), and that 80% of stores were near a bus stop. This means that more people could potentially afford to buy a variety of foods and that stores may be more accessible by public transportation. However, most stores (65%) also had one or more advertisements for cigarettes or other tobacco products, and the most common store type was convenience (which scored poorly on NEMS measures).

Swetland Post-Doctoral Fellow, Gwendolyn Donley, explains "we learned many things from these audits, but one key point is that we're not seeing change from year to year in the nutrition environment. How can we work in novel ways to address food apartheid and improve food access in Cleveland's neighborhoods? The foodNEST 2.0 project is working to answer this question."

---

*Be sure to keep up with Swetland news through our online [News & Events](#) page!*

---

## Events & Opportunities

### Policy Change Across Institutions I: Achieving Equity for Individuals with Substance Use Disorders

December 9th | 10 – 12:00 pm

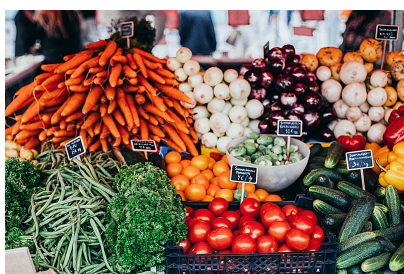
[Register](#) to join CWRU School of Medicine for a roundtable of local, national and international speakers addressing innovative, evidence-based ideas for policy change in healthcare aimed at creating equity more broadly and increasing access to effective substance use treatment specifically. Moderated by Yvonka Hall, MPA, Executive Director of the Northeast Ohio Black Health Coalition, the speakers for this event include:

- **Jessica McCullough**, MSN, APRN, PMHNP-BC, FNP-BC – CWRU, School of Medicine
- **Marie Jauffret-Roustide**, PhD – University of Paris, French Institute of Health and Medical Research

- Ana Cabello-De la Garza, MSW, MPH
- Shuchin Shukla, MD, MPH
- Melinda Ramage, BSN, MSN, FNP-BC

## PRCHN December 2020 Seminar: The FARE Project: Using a Health Equity Framework to Improve Access to Healthy Food

December 9th | 12 – 1:00 pm



This webinar will discuss how [Food Access Raises Everyone](#) [FARE] approach to food access work in Cleveland and how FARE's staff and advisors assessed their work using a health equity lens and developed a new community-based participatory framework to guide their decision making and work moving forward. [Register](#) for this event here.

## Helpful Resources

Modeling for the Future of Food in Your  
Neighborhood Study (foodNEST 2.0) Presents the  
"Menu of Actions for Community Driven Food Systems Change"



This tool provides a record of our study process and serves as a primer for

thinking about the complexity of the local food system and why it is not producing outcomes of justice. Most importantly, the menu is designed to jumpstart community driven food systems changes that lead to:

- Households with financial strength and food security,
- Neighborhoods with fair access to affordable, fresh, and healthy foods,
- Communities that are strong in body, mind, and spirit.

Find the Menu of Actions [here](#) or watch the [recording](#) of the November 17th panel presentation of foodNEST 2.0 contributors.

---

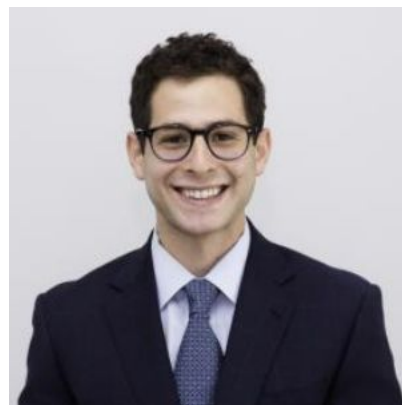
*Have an opportunity you'd like us to feature in our next newsletter?*

*We are accepting content submissions! You can find the submission form [here](#).*

---

## A Reflection of APHA from Ravin Scholar, Samuel Boas

*This past month I was lucky to attend the APHA (American Public Health Association) annual meeting. I did not know what to expect because I had never been to a public health conference or a virtual meeting. Surprisingly, I found that the virtual platform allowed me to attend a far greater number of sessions than I anticipated, and was able to network with two researchers who were able to give me logistical research advice. I found the panel focusing on historical memory and community activism in the Hunter's Point Nuclear site in California to be particularly inspiring. I was not able to present a poster or presentation this year, but look forward to next year: to meeting my new colleagues in person and to presenting my work!*



Learn more about Swetland Center research that was presented virtually at APHA [here](#).



Follow us on Twitter



Visit our Website



Want to change how you receive these emails?  
You can [update your preferences](#) or [unsubscribe](#).

© Copyright [Case Western Reserve University](#).  
Cleveland, Ohio 44106 | 216.368.1800

This email was sent to <<Email Address>>

[why did I get this?](#) [unsubscribe from this list](#) [update subscription preferences](#)

Mary Ann Swetland Center for Environmental Health · 1974 E. 66th Street · Suite 300 · Cleveland, OH 44103 · USA

**Subscribe**

**Past Issues**

**Translate ▼**

