

[View this email in your browser](#)



MARY ANN SWETLAND
CENTER FOR
ENVIRONMENTAL HEALTH

The Swetland Scoop

March 2023

News & Announcements



We're Hiring!

When to apply: As soon as possible. Applications will be reviewed immediately until the position is filled.

What you'll do:

- Execute collaborative community action research through the implementation and evaluation of a systems change intervention (i.e. the Nourishing Power Network).
- Work independently, design and plan projects, oversee collaborations, supervise students, manage complex project budgets and grant reporting, and carry out research activities of an assigned project through completion.
- Utilize community and stakeholder-engaged research methods including both quantitative and qualitative techniques.
- Provide oversight to the intervention overall and will offer leadership to executing the Nutrition Equity Fund component, including design and evaluation of grant-making processes and outcomes.
- Keep the Principal Investigator informed of research progress within the study overall and will provide recommendations on study design and adaptations within this pragmatic trial.
- Present data and findings to diverse audiences and will actively support grant proposal development.
- Uphold the values of the Center including a commitment to racial justice, collaboration, community engagement, inclusivity, and innovation.

[Learn more and apply](#)



If you hadn't heard– our [2022 Annual Report](#) is live. Check out everything that we were up to last year!

Be sure to keep up with Swetland news through our online [News & Events](#) page!

Events & Opportunities

Wednesday, March 22, 2023
FIG at The Pivot Center
2937 W 25th St, Cleveland, OH
6:00-8:00 PM

scan here to register!



https://community.case.edu/SwetlandCenter/rsvp_boot?id=1990895

YOU'RE INVITED

to network about local
resources for food justice!

We will have collaborative discussions about :

- Nutrition Education
- Urban Farming/Vacant Lot Use
- Culturally Relevant Food Access
- Reducing Food Waste
- Farm to School Meals



MARY ANN SWETLAND
CENTER FOR
ENVIRONMENTAL HEALTH

FARE
Food Access Raises Everyone



Free to attend.
Food will be
provided.
All are welcome!

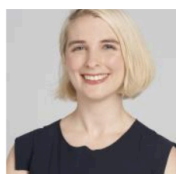
The Mary Ann Swetland Center for
Environmental Health Seminar Series Presents:

It Could Make Us Sick - Mapping the Occupational Air Pollution Exposure Experienced by Farm Workers in Ohio

April 25, 2023 | 9:00 AM | Virtual

Discuss the occupational exposures and health impacts experienced by farm workers within Ohio, and highlight gaps in research, policy and care access for this potentially vulnerable worker group.

Presenters:



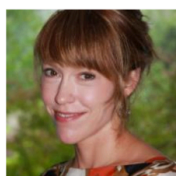
Maeve MacMurdo, MBChC, MPH

*Staff Physician, Respiratory Institute, Cleveland Clinic,
Director of the Occupational Lung Disease program*



Karen Bolte Mulloy, DO, MSCH

*Associate Professor, Department of Family Medicine and
Community Health School of Medicine
Associate Professor, Department of Population and
Quantitative Health Sciences School of Medicine*



Jacqueline Curtis, PhD, MA

*Co-Director, GIS Health & Hazards Lab, Department of
Population and Quantitative Health Sciences, School
of Medicine, Case Western Reserve University*



MARY ANN SWETLAND
CENTER FOR
ENVIRONMENTAL HEALTH

[REGISTER HERE](#) or scan the QR code

This is a free monthly learning opportunity
that is open to the public.



Hot off the Press

Check out our Most Recent Publications from Faculty, Staff &

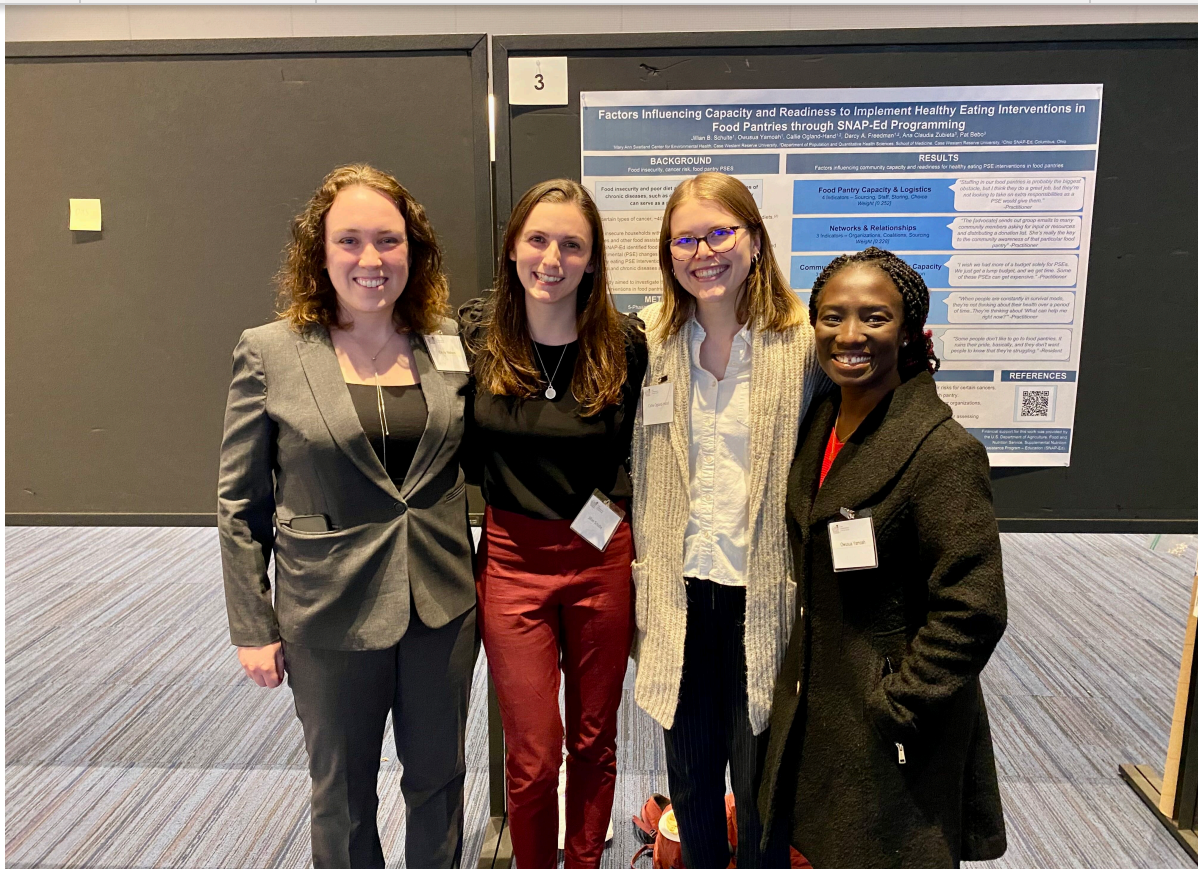
Beth Schlemper, M., Shetty, S., Yamoah, O., Czajkowski, K., & Stewart, V. (2023). [Culturally Responsive Teaching through Spatial Justice in Urban Neighborhoods](https://doi.org/10.1177/00420859231153411). Urban Education, 0(0). <https://doi.org/10.1177/00420859231153411>

Dong W, Motairek I, Nasir K, Chen Z, Kim U, Khalifa Y, Freedman D, Griggs S, Rajagopalan S, *Al-Kindi SG. (2023). [Risk Factors and Geographic Disparities in Premature Cardiovascular Mortality in US Counties: A Machine Learning Approach](#). Scientific Reports, 13; (Article Number 2978).

**Denotes Faculty Affiliate*

Swetland Spotlight

Swetland Team Members Present Research Posters at CWRU Cancer Disparities Symposium



Swetland is proud to share its work through three team member poster presentations at the 7th Annual Cancer Disparities Symposium: **"Equity in Action: Intercepting Cancer Disparities Through Research and Community Initiatives."** This symposium was presented by Case Comprehensive Cancer Center's Office of Community Outreach and Engagement on March 2nd – 3rd, 2023.

Several Swetland team members shared their work:

Ogland-Hand, C., Ciesielski, T., Bean, M.K., Nock, N.L. (2023, March 2nd). Food Insecurity, Nutritional Challenges, and Underlying Disparities for AYA Cancer Survivors.

Schulte, J., Yamoah, O., Ogland-Hand, C., Freedman, D., Claudia Zubieta, A., Bebo, P. (2023, March 2nd). Factors Influencing Capacity and Readiness to Implement Healthy Eating Interventions in Food Pantries through SNAP-Ed Programming.

Yamoah, O., Monteban, M., Nelson, E., Gee, R., Ciesielski, T., Switzer, M., Freedman, D. (2023, March 2nd) Network approaches for evaluating the impact of system-level community interventions to reduce cancer disparities: Lessons from the Nourishing

Congratulations to the team on a job well done!

2023 ASSNA Conference Presentation



Owusua Yamoah, PhD, MA and Katie Poppe, MPH, RDN from the Swetland Center and partner Megan Riley, MPH from The Ohio State University (OSU) SNAP–Ed, traveled to Washington, DC in February to attend the Association of SNAP Nutrition Education Administrators (ASNNA) 2023 Conference.

They presented to a national audience on *"The Power of Partnership: Developing a Tool to Assess Community Capacity and Readiness for Healthy Eating PSE Interventions,"* which highlighted the development and practical use of the web-based, readiness assessment tool (PSE READI) that supports the implementation of healthy eating policy,

[Subscribe](#)

[Past Issues](#)

[Translate](#) ▼



Want to change how you receive these emails?
You can [update your preferences](#) or [unsubscribe](#).

© Copyright [Case Western Reserve University](#).
Cleveland, Ohio 44106 | 216.368.1800