

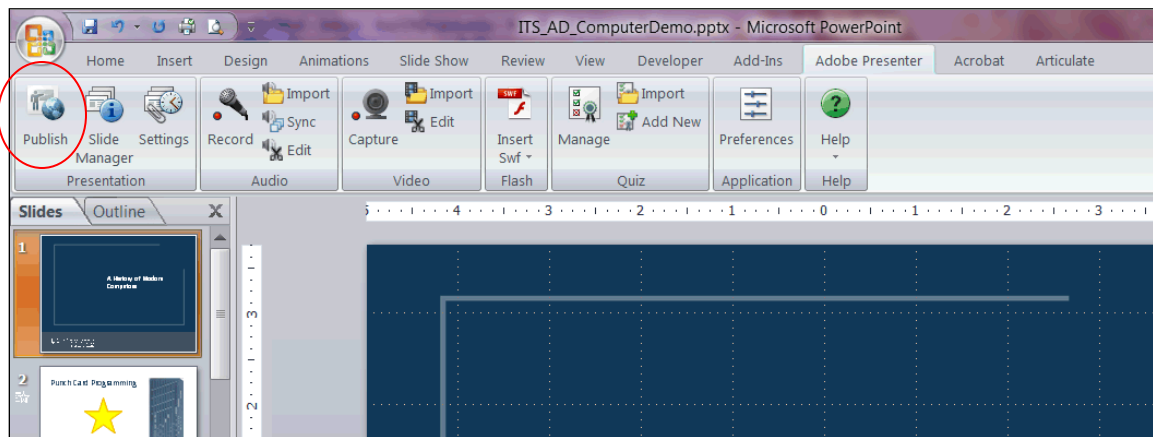
Publishing to Adobe Connect

Concept

Adobe Presenter is designed to work seamlessly with Adobe Connect Pro, an enterprise service that is available to all members of the Case Western Reserve University community. When Adobe Presenter presentations are published to the Adobe Connect server, the presentations can be loaded into online meetings, transformed into courses, or launched as-is in a Flash-supported environment. This topic will explain how to publish an Adobe Presenter presentation to Adobe Connect.

Procedure

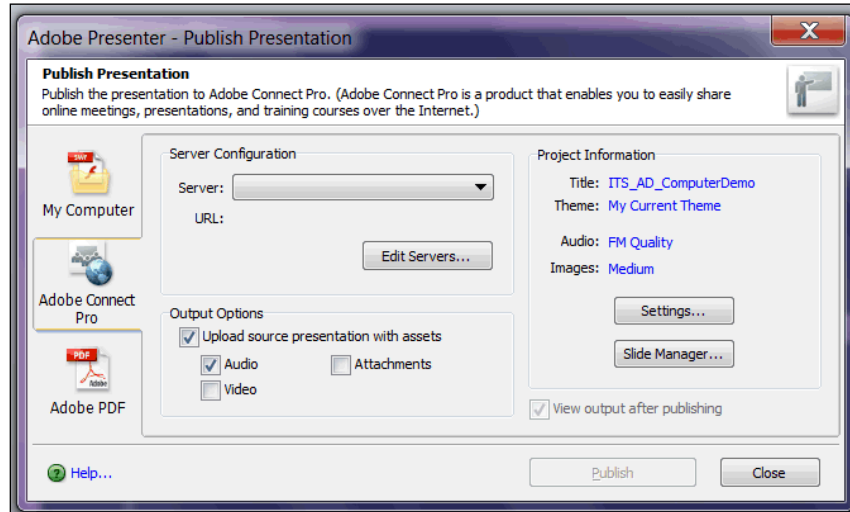
Begin by opening a PowerPoint presentation.





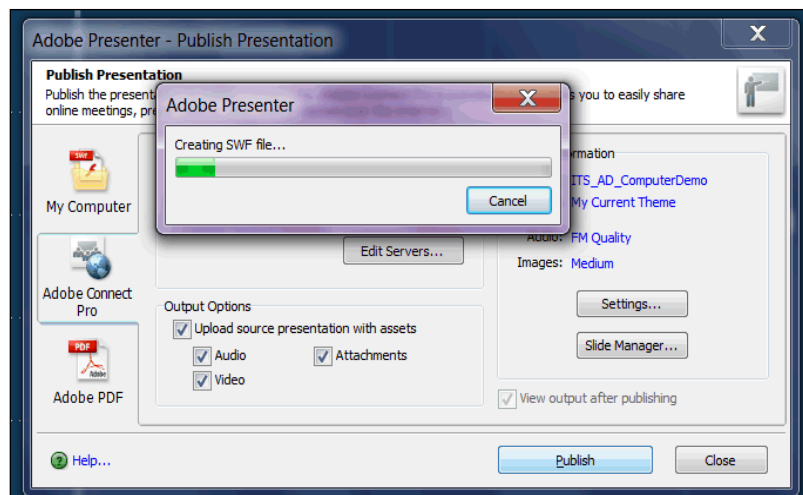
Step	Action
1.	Activate the Adobe Presenter tab. Click the Publish button.
2.	The Publish Presentation window appears. Activate the Adobe Connect Pro tab.

Information Technology Services Reference Guide

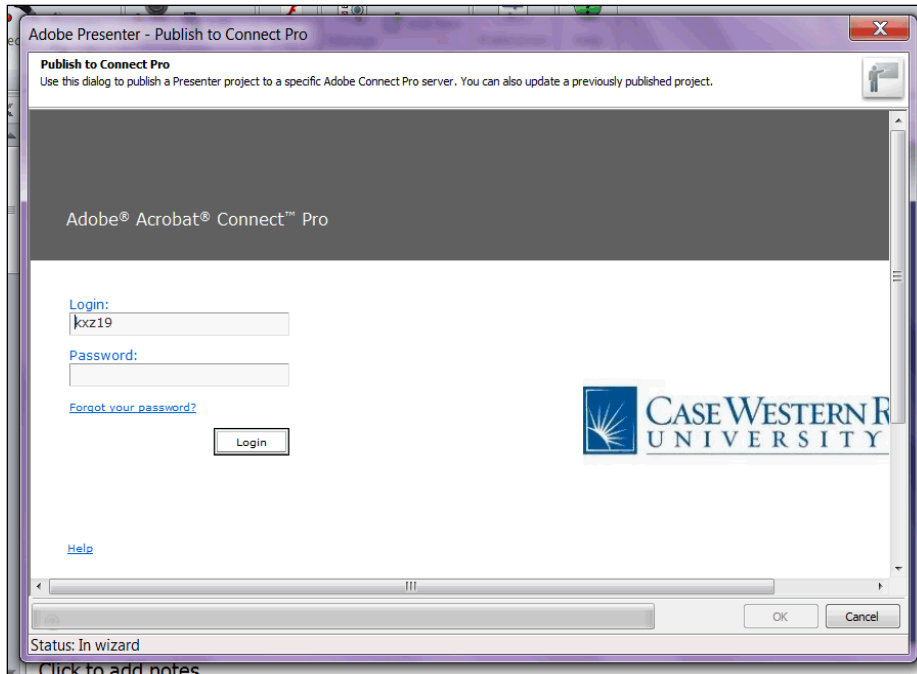
Publishing to Adobe Connect

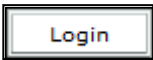


Step	Action
3.	Click the Server list.
4.	Select the Adobe Connect item from the list. Note: This server was entered into the Settings window in the topic called "Setting up Adobe Connect Server."
5.	If it is not checked already, click the Upload source presentation with assets option.
6.	Place checkmarks in the Audio , Video and Attachments options. 
7.	Click the Publish button. 



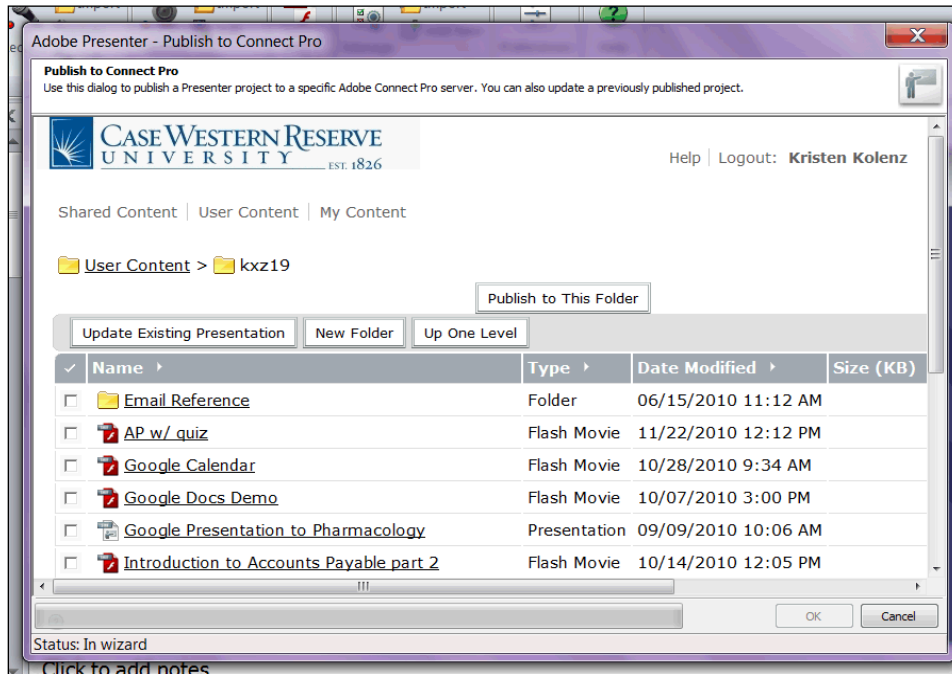
Step	Action
8.	A window will appear to display the application's progress of turning your presentation into a .swf file.

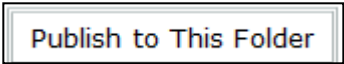


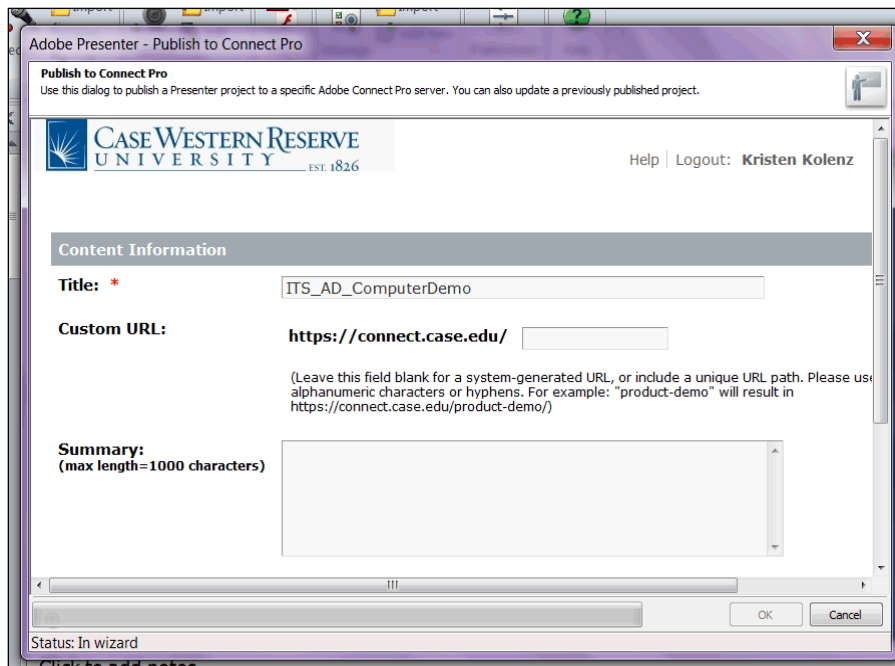
Step	Action
9.	The Adobe Connect Pro login screen appears. Enter your CWRU Network ID and password. Click the Login button. 

Information Technology Services Reference Guide

Publishing to Adobe Connect



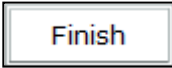
Step	Action
10.	<p>Your Adobe Connect user content folder appears.</p> <p>Click the Publish to This Folder button.</p> 

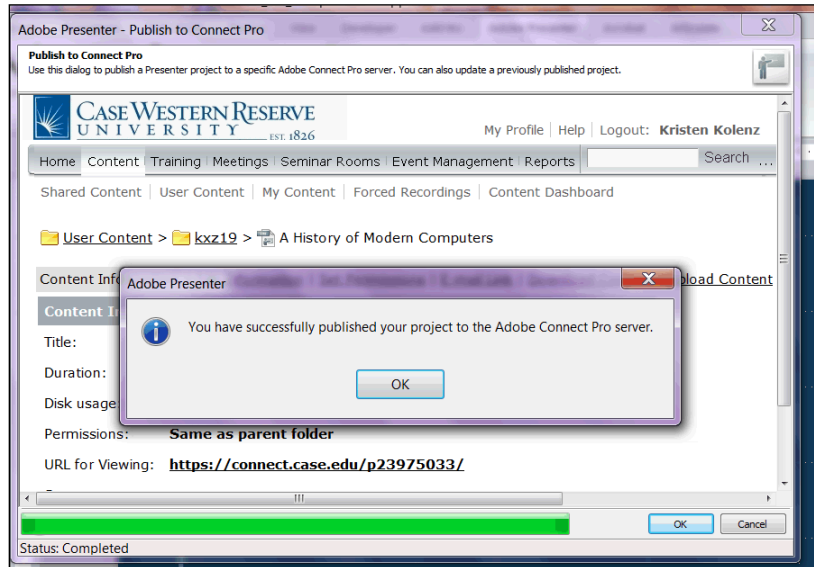


Information Technology Services Reference Guide Publishing to Adobe Connect

Step	Action
11.	The Content Information screen appears. In the Title field, the default title of the presentation is its file name. If desired, enter a different title into the field.
12.	The Custom URL field enables you to create a specific URL for your presentation. It is useful to those who will be sending out links to their presentations

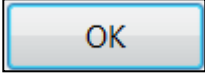
A custom URL enables you to assign an appropriate URL to your presentation, such as "https://connect.case.edu/ECON101week1." This makes the URL friendlier to read, understand, and type if needed. If you are going to create a course in Adobe Connect from this content, it is a best practice to leave this field blank and allow the system to assign a URL. System-generated URL's are made of a short string of random letters and numbers.

Step	Action
13.	Click the Finish button. 
14.	A confirmation appears. It may take a few minutes for the presentation to publish. Do not close the Publish window until a confirmation appears.



Information Technology Services Reference Guide

Publishing to Adobe Connect

Step	Action
15.	<p>When the presentation has published successfully, a window will appear to notify you.</p> <p>Click the OK button.</p> 
16.	<p>The Content Information screen appears.</p> <p>To view your presentation, click the URL for Viewing link.</p> <p>After a brief loading screen, your presentation will appear.</p>
17.	<p>Once published, you may share your presentation in a meeting, by directing your audience to its URL, or by creating a course from it.</p> <p>For directions on creating a course, please see the section of this manual called "Creating Curriculum." For directions on creating a meeting, please see the Adobe Connect user guide.</p> <p>End of Procedure.</p>